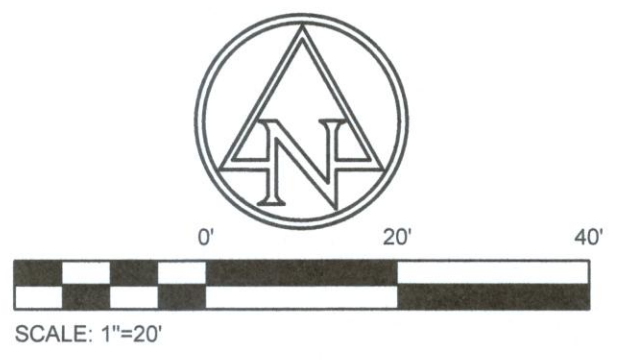
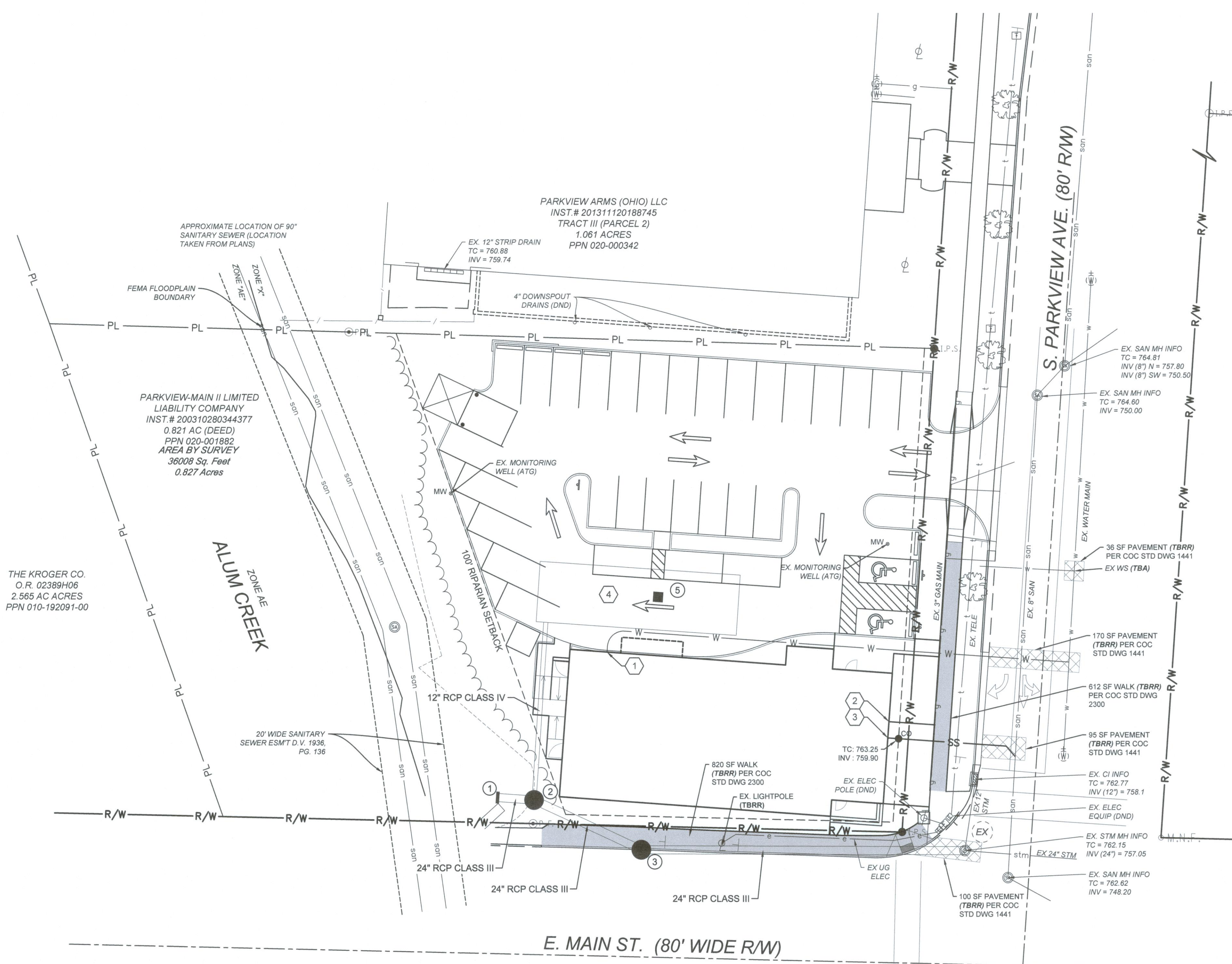


PLOT SCALE: 1:1 EDIT DATE: 1/16/19 - 8:25 AM EDITED BY: JRPERRY DRAWING FILE: O:\2018\006000\DRAWINGS\CIVIL\CONSTRUCTION DOCUMENTS\2018.00600 UTILITY.DWG



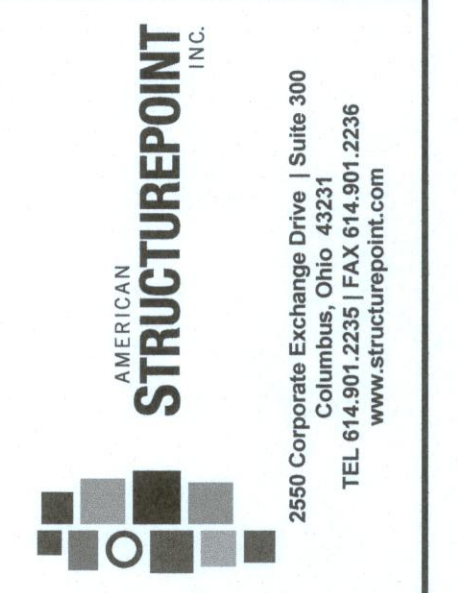
UTILITY LEGEND

—G—	GAS
—SS—	SANITARY SERVICE
—W—	WATER
—DWS—	DOMESTIC WATER SERVICE
—FWS—	FIRE WATER SERVICE
—E—	ELECTRIC
—STORM SEWER—	STORM SEWER
—UD—	UNDERDRAIN
● CO	CLEAN OUT (AA-S161)
■	CATCH BASIN
—	HEADWALL
• W	WATER VALVE
[Hatched Box]	PAVEMENT REPLACEMENT PER COC STD DWG 1441
[Solid Grey Box]	REPLACE WALK PER COC STD DWG 2300

CODED NOTES

1	2" WATER SERVICE. PROVIDE UTILITY WITHIN 5'-0" OF NEW BUILDING OR TO LOCATION SHOWN ON PLUMBING DRAWINGS. FINAL CONNECTION MADE BY PLUMBING CONTRACTOR.
2	GAS SERVICE. PROVIDE UTILITY WITHIN 5'-0" OF NEW BUILDING OR TO LOCATION SHOWN ON PLUMBING DRAWINGS. FINAL CONNECTION MADE BY PLUMBING CONTRACTOR.
3	8" SANITARY SERVICE PER AA-S160, BY PERMIT @ 2.08% MIN SLOPE
4	SEE SHEETS C401 & C402 FOR UNDERGROUND DETENTION SYSTEM NOTES AND DETAILS

- VIDEO EX SAN SEWER TO VERIFY NO OTHER TAPS SERVE PROPERTY
- RECOMMEND DIRECTIONAL DRILLING W/L SERVICE TO MINIMIZE IMPACT TO TRAFFIC & LIMIT PAVEMENT REPLACEMENT
- NEED MAIN ST LIGHT & POLE SPECIFICATIONS ADD TO DETAILS
- NEED PERMANENT EXEMPTION FOR STORM SEWER WHERE NORTH OF R/W LINE



CONSTRUCTION DOCUMENTS
FOR
OHIO STATE BANK
CITY OF BEXLEY, FRANKLIN COUNTY, OHIO
UTILITY PLAN

REVISIONS	DATE	SHEET NO.	DESCRIPTION	APPROVED	DATE

DATE:	1/25/2019
DRAWN BY:	JRP
CHECKED BY:	OSD
JOB NUMBER:	2018.00600

C500