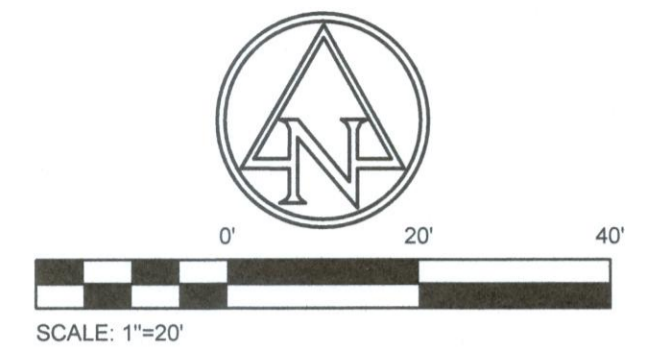
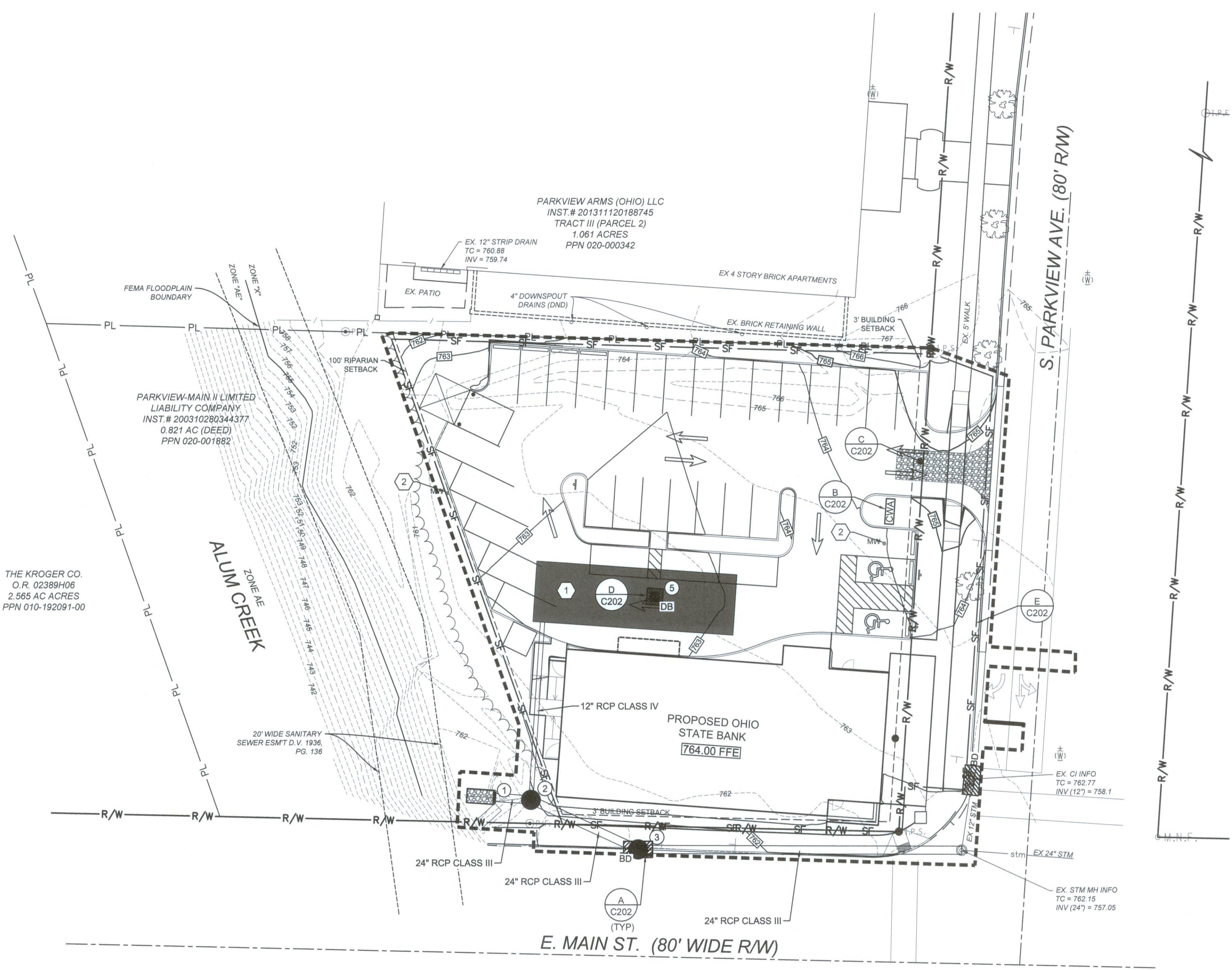


PLOT SCALE: 1:1 EDIT DATE: 1/17/19 - 10:59 AM EDITED BY: JRPERRY DRAWING FILE: C:\2018\00600\DRAWINGS\CIVIL\CONSTRUCTION DOCUMENTS\2018.00600.ESC.DWG



EROSION CONTROL LEGEND

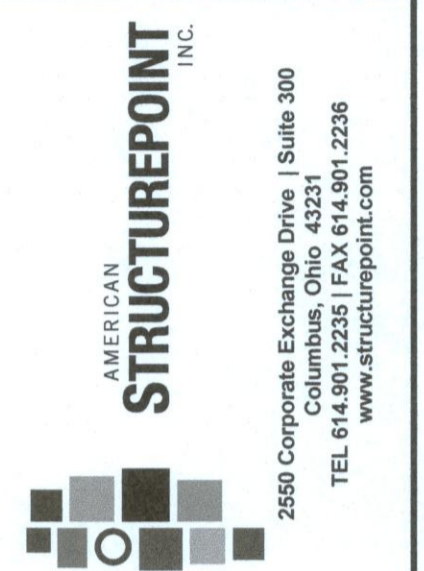
- PROPOSED MAJOR CONTOUR
- PROPOSED MINOR CONTOUR
- EXISTING MAJOR CONTOUR
- EXISTING MINOR CONTOUR
- LIMITS OF DISTURBANCE (0.600 AC)
- SILT FENCE
- CONCRETE WASHOUT AREA
- DANDY BAG INLET PROTECTION
- BEAVER DAM INLET PROTECTION
- STABILIZED CONSTRUCTION ENTRANCE
- ROCK CHANNEL PROTECTION
- UNDERGROUND DETENTION SYSTEM

CODED NOTES

1	SEE SHEET C401 FOR UNDERGROUND DETENTION SYSTEM DETAILS
2	EXISTING MONITORING WELL. ADJUST TO GRADE

CONSTRUCTION ENTRANCE STONE SHOULD BE BEHIND EX SIGNATURE

*INLET PROTECTION ON MAIN ST MAY CAUSE PONDING & TRAFFIC HAZARD
USE FILTER BASKET INTERNAL TO STRUCTURE WITH OVERTFLOW INSIDE STRUCTURE*



CONSTRUCTION DOCUMENTS
FOR
OHIO STATE BANK
CITY OF BEXLEY, FRANKLIN COUNTY, OHIO
EROSION & SEDIMENT CONTROL PLAN

REVISIONS	DATE	SHEET NO.	DESCRIPTION	APPROVED	DATE

DATE:	1/25/2019
DRAWN BY:	JRP
CHECKED BY:	OSD
JOB NUMBER:	2018.00600

C200