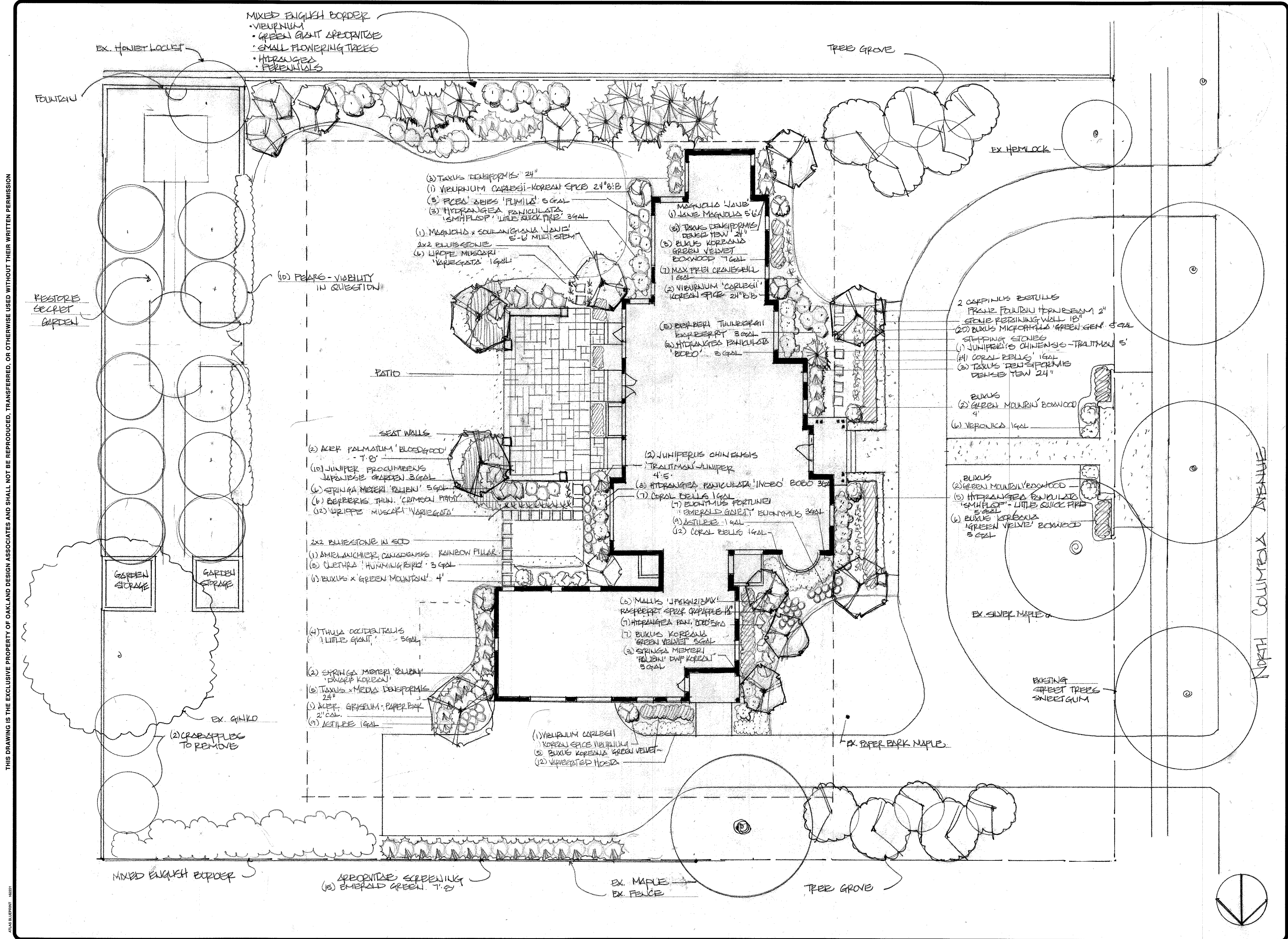


THIS DRAWING IS THE EXCLUSIVE PROPERTY OF OAKLAND DESIGN ASSOCIATES AND SHALL NOT BE REPRODUCED, TRANSFERRED, OR OTHERWISE USED WITHOUT THEIR WRITTEN PERMISSION



MIXED ENGLISH BORDER  
 • VIBURNUM  
 • GREEN GIANT SPERDITZE  
 • SMALL FLOWERING TREES  
 • HERBAGES  
 • PERENNIALS

TREE GROVE

EX. HEMLOCK

- (3) TAXUS DECAURNEA 24"
- (1) VIBURNUM CARLESI-KOREAN SPICE 24" 6" B
- (3) FICUS LIRIODES 'FILMILIA' 5 GAL
- (3) HYDRANGEA PANICULATA 'SMH FLOP' LITTLE QUICK FIRE 3 GAL
- (1) MAGNOLIA x SOULANGIANA 'LAVIE' 5-6 MULTI STEM
- 2x2 BLUESTONE
- (6) LIPOPE MUSCARI 'VARIEGATA' 1 GAL

- MAGNOLIA 'LAVIE'
- (1) JANE MAGNOLIA 5' 6"
  - (3) TAXUS DECAURNEA 'DENSE TEW' 24"
  - (3) BUXUS KOREANA 'GREEN VELVET' BOXWOOD 7 GAL
  - (1) MAX PREL 'CREMIS-BELL' 1 GAL
  - (2) VIBURNUM 'CORLECI' KOREAN SPICE 24" 6" B
  - (5) BERBERIS THUNBERGII 'EMERALD GREEN' 3 GAL
  - (2) HYDRANGEA PANICULATA 'BOBO' 2 GAL

- 2 CAPPARIS BERTALDI
- FRANE FOUNTAIN HORSEMAN 2"
- STONE RETAINING WALL 18"
- (2) BUXUS MICROPHALLA 'GREEN GEM' 5 GAL
- STAMPING STONES
- (1) JUNIPERUS CHINENSIS - TRAUTMAN 5'
- (4) CORAL BELLS 1 GAL
- (3) TAXUS DECAURNEA 'DENSE TEW' 24"

- BUXUS
- (2) GREEN MOUNTAIN BOXWOOD 4'
- (6) VERONICA 1 GAL

- BUXUS
- (2) GREEN MOUNTAIN BOXWOOD
- (5) HYDRANGEA PANICULATA 'SMH FLOP' LITTLE QUICK FIRE 5 GAL
- (6) BUXUS KOREANA 'GREEN VELVET' BOXWOOD 5 GAL

(10) PEARS - VIABILITY IN QUESTION

PATIO

SEAT WALLS

- (2) ACER PALMATUM 'BLOODGOOD' 7' 8"
- (10) JUNIPER PROCUMBENS JAPANESE GARDEN 3 GAL
- (6) STRONGA MEYERI 'POLINA' 5 GAL
- (6) BERBERIS THUNBERGII 'CRIMSON PEARL'
- (12) VERONICA MUSCARI 'VARIEGATA'

- (2) JUNIPERUS CHINENSIS 'TRAUTMAN JUNIPER' 4' 5"
- (3) HYDRANGEA PANICULATA 'INCOE' BOBO 3 GAL
- (7) CORAL BELLS 1 GAL
- (7) EUCENTHUS FORTUNEI 'EMERALD GEM' EUCENTHUS 3 GAL
- (9) ASTILBE 1 GAL
- (2) CORAL BELLS 1 GAL

- 2x2 BLUESTONE IN SOD
- (1) AMELANCHIER CANADENSIS 'RAINBOW PILLAR'
  - (3) CLETHRA 'HUMMINGBIRD' 3 GAL
  - (3) BUXUS x 'GREEN MOUNTAIN' 4'

- (6) MALLUS 'FERNIZIMKI' RASPBERRY SPICE CRAPPALE 12'
- (7) HYDRANGEA PAN. 'BOBO' 3 GAL
- (7) BUXUS KOREANA 'GREEN VELVET' 5 GAL
- (2) STRONGA MEYERI 'POLINA' DAN KOREAN 3 GAL

- (4) THUSA OCCIDENTALIS 'LITTLE GIANT' 5 GAL
- (2) STRONGA MEYERI 'POLINA' 'DWARF KOREAN' 24"
- (5) TAXUS x MEDIA DECAURNEA 24"
- (1) ACER GRiseum - PAPER BARK 2' GAL
- (9) ASTILBE 1 GAL

- (1) VIBURNUM CARLESI KOREAN SPICE VIBURNUM
- (3) BUXUS KOREANA 'GREEN VELVET'
- (2) VARIEGATED HOSIA

EX. SILVER MAPLE

EXISTING STREET TREES SWEETGUM

EX. GINKGO

(2) CRABAPPLES TO REMOVE

EX. PAPER BARK MAPLE

MIXED ENGLISH BORDER

SPERDITZE SCREENING (5) EMERALD GREEN 7' 8"

EX. MAPLE EX. FENCE

TREE GROVE

REVISIONS	BY

CONNOR RESIDENCE  
 236 NORTH COLUMBIA AVE.  
 BEXLEY, OH

landscape architecture  
 site planning  
 construction management

1156 Oakland Park Avenue  
 Columbus, Ohio 43224  
 (614) 268-3834

**Oakland Design Associates**

DRAWN LORI FRANCO	CHECKED BRIAN BENTON
DATE 4/10/24	SCALE 1" = 10'-0"
JOB NO.	
SHEET	
OF	SHEETS