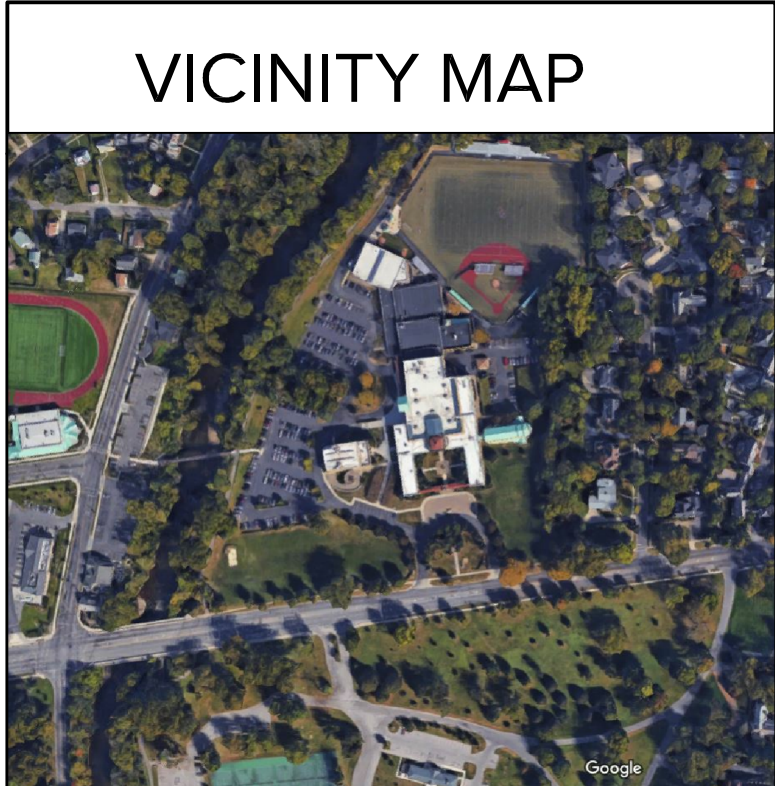


# ST. CHARLES PREPARATORY SCHOOL PARKING LOT EXPANSION

2010 EAST BROAD STREET  
BEXLEY, OHIO 43209



ARCHITECT:  
**TRIAD ARCHITECTS**  
463 N HIGH STREET, SUITE 2B  
COLUMBUS, OHIO 43215  
PHONE (614) 942-1050

COMMISSION NO. 1902b  
DATE: JULY 11, 2019 ZONING SUBMISSION

St. Charles Preparatory School  
Parking Lot Expansion

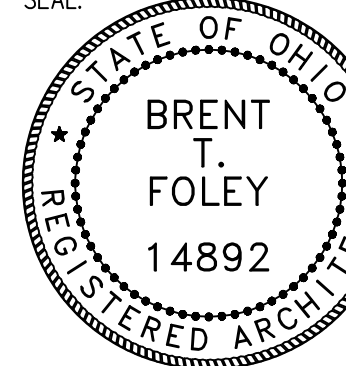
2010 E BROAD ST  
BEXLEY, OHIO 43209

COMMISSION NUMBER: 1902b

463 N HIGH ST, SUITE 2B  
Columbus, Ohio 43215  
Phone: (614) 942-1050  
main@triadarchitects.com

DATE:  
ZONING SUBMISSION: 07-11-19

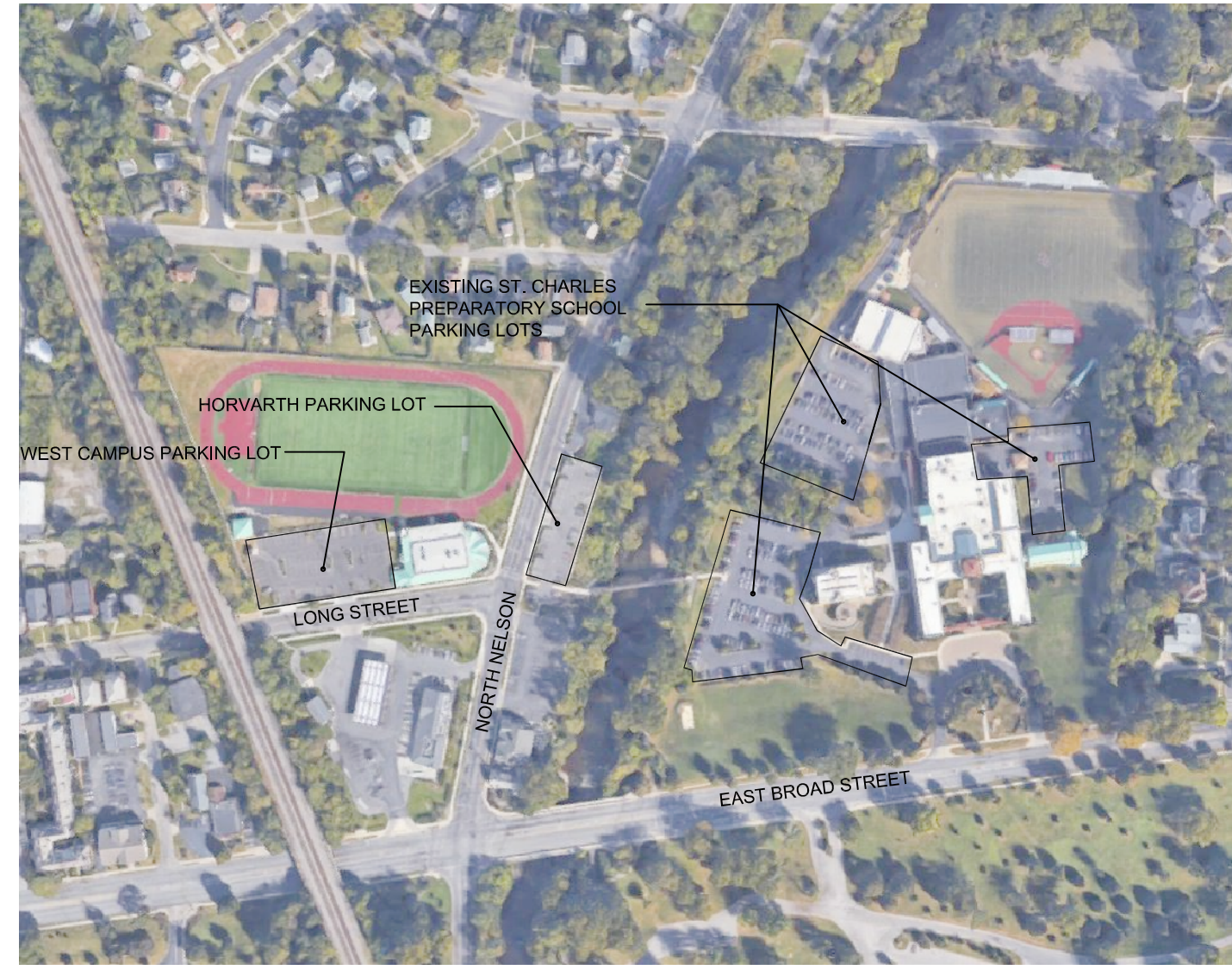
SEAL:



COVER SHEET

DRAWN BY: TS  
CHECKED BY: BF

A0.1

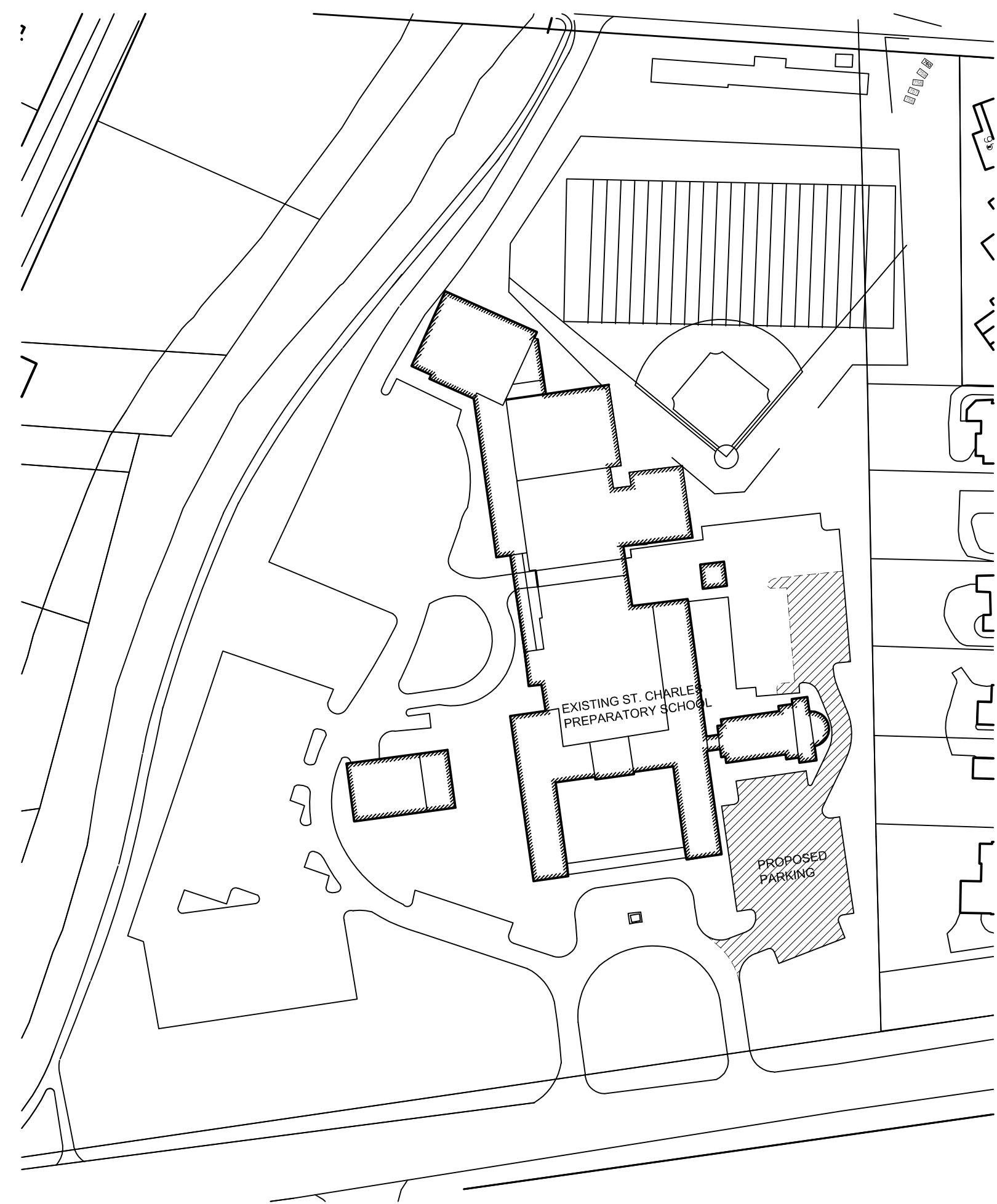


**EXISTING PARKING LOT KEY PLAN** (D)

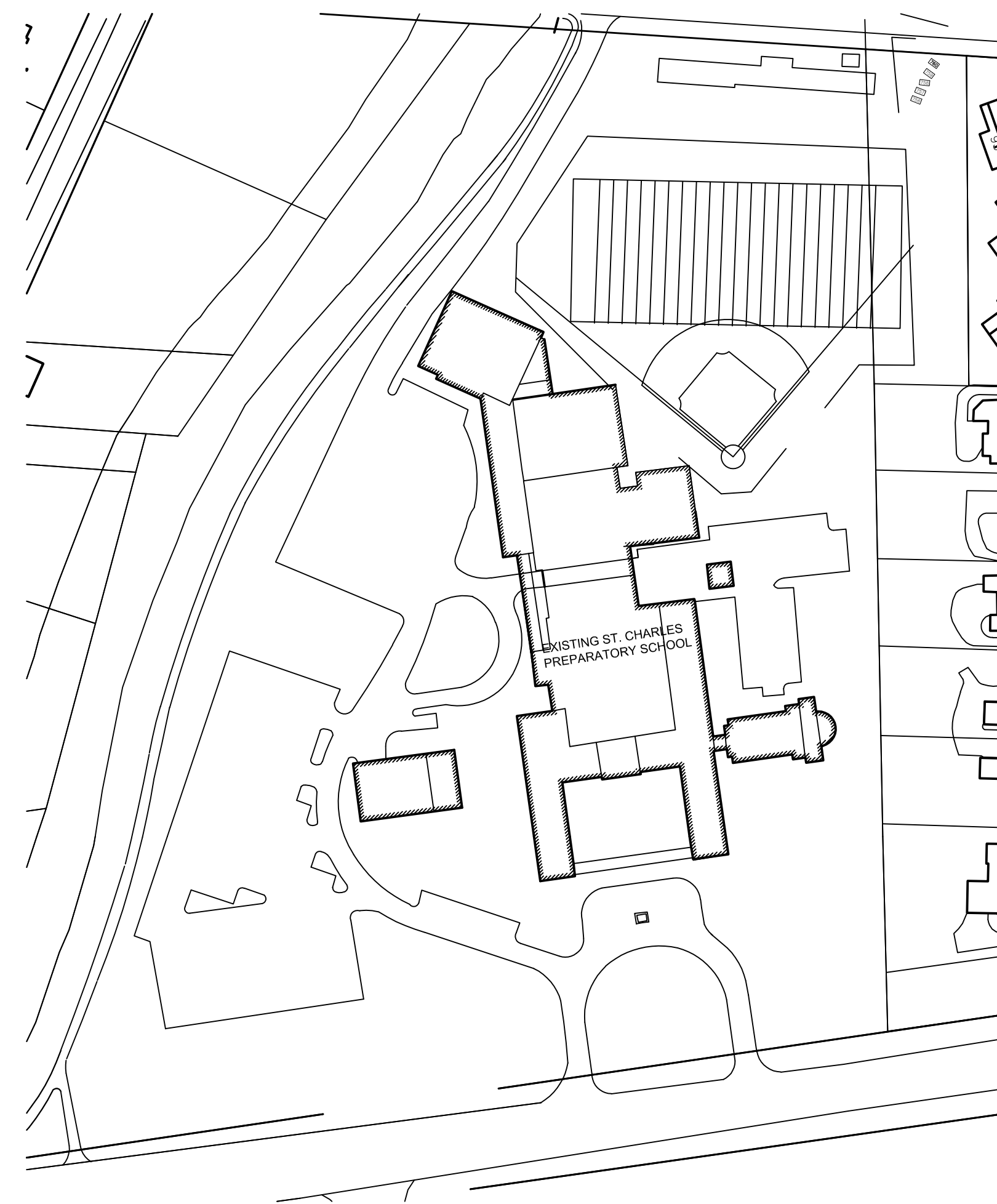
GENERAL ZONING INFORMATION	
ADDRESS	2010 EAST BROAD BEXLEY, OHIO 43209
PARCEL NUMBER	020-000075
ZONING CLASSIFICATION	OPEN SPACE (OS)

PARKING CALCULATIONS			
USE	SQUARE FOOTAGE	OCCUPANTS	REQUIRED PARKING
EXISTING ST. CHARLES PREPARATORY SCHOOL	+/-163,500	X	408.75 (1: 400SF)
EXISTING PRACTICE FACILITY	+/-14,500	X	36.25 (1: 400SF)
EXISTING COMMONS	X	1200	240 (1:5 SEATS)
TOTAL PARKING REQUIREMENT			685
EXISTING ST. CHARLES PREPARATORY SCHOOL			272
WEST CAMPUS PARKING LOT (PRACTICE FACILITY PARKING)			66
HORVARTH PARKING LOT			44
TOTAL EXISTING PARKING			382
PROPOSED PARKING			71
NEW TOTAL PARKING PROVIDED			453

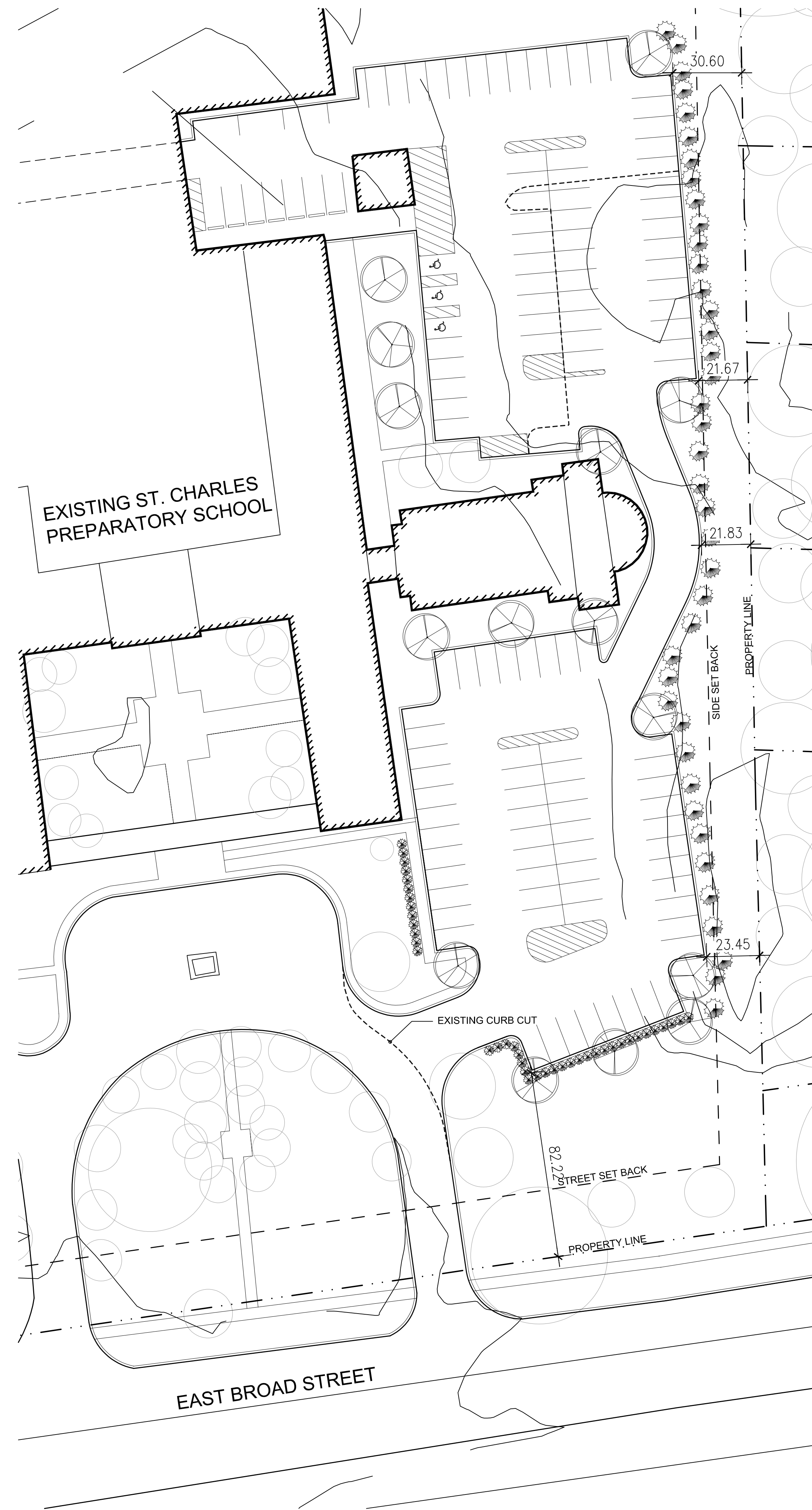
HANDICAP PARKING CALCULATIONS	
TOTAL PARKING SPACES PROVIDED	3
51-75	
PER TABLE 1106.1 IN THE 2017 OBC	



**PROPOSED SITE PLAN** (C)



**EXISTING CONDITONS** (B)



**SITE PLAN** (A)  
1" = 30'-0"

LANDSCAPE SYMBOL LEGEND	
	EXISTING TREE
	SPECIES: LINDEN CALIPERS: 2 1/2"
	EVERGREEN
	HEDGE SPECIES: TAXUS MEDIA DENSIFORMIS - DENSE YEW

**St. Charles Preparatory School  
Parking Lot Expansion**  
2010 E BROAD ST  
BEXLEY, OHIO 43209

COMMISSION NUMBER: 1902b  
 463 N HIGH ST, SUITE 2B  
Columbus, Ohio 43215  
Phone: (614) 942-1050  
main@triadarchitects.com

DATE:  
ZONING SUBMISSION: 07-11-19  
SEAL:

**SITE PLAN**  
DRAWN BY: TS  
CHECKED BY: BF  
**AS1.1**