

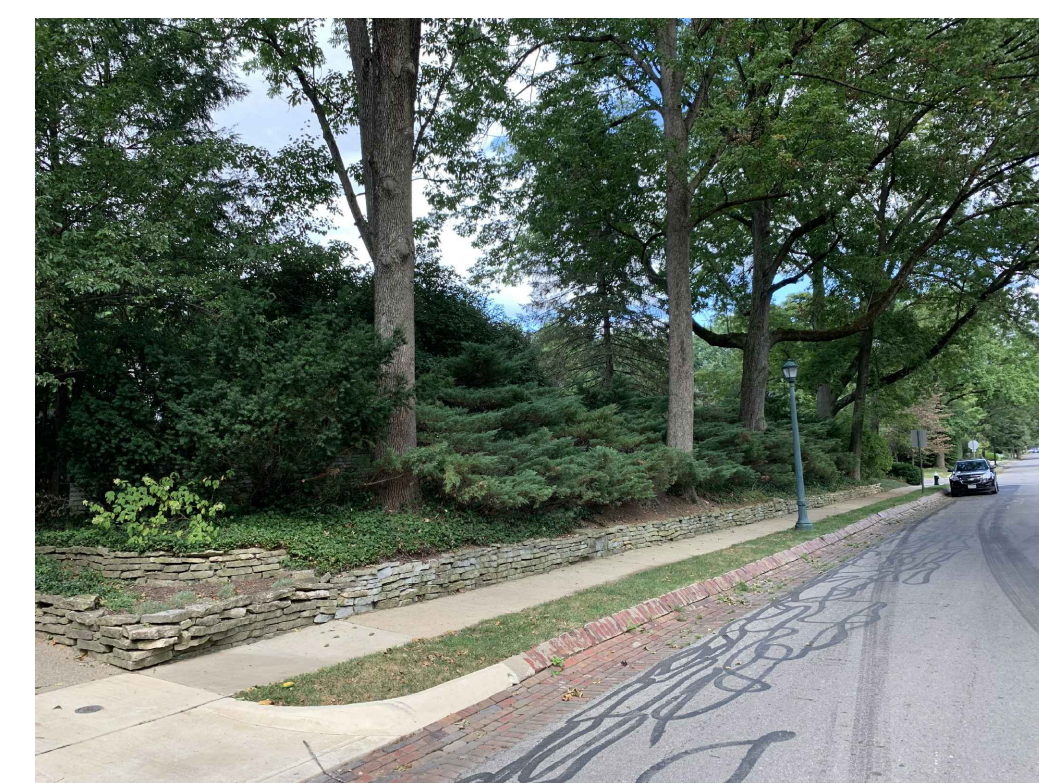
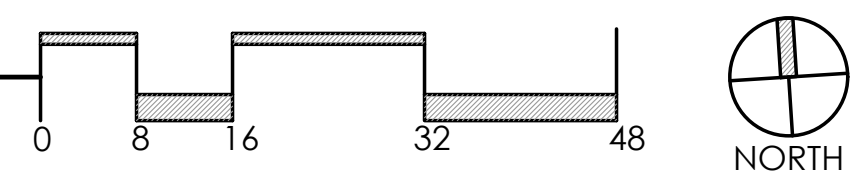


# spruce

271 S. CASSINGHAM RD.  
COLUMBUS, OH 43209  
T (614) 300-0790

SETS & REVISIONS:	DATE:
T&PGC SUBMISSION	11/8/19

1 SITE PLAN AERIAL  
SCALE: 1/16" = 1' - 0"



BASKES RESIDENCE  
353 N. DREXEL AVE.  
COLUMBUS, OH 43209



2 SITE PHOTOS  
SCALE: NTS

PROJECT NO: XXXX

## SITE PLAN AND EXISTING PHOTOS

ALL DRAWINGS ARE THE ORIGINAL WORK OF SPRUCE LLC, AND MAY NOT BE DISCLOSED, USED OR DUPLICATED IN ANY WAY WITHOUT THE WRITTEN CONSENT OF SPRUCE LLC. SPRUCE LLC RESERVES THE RIGHT TO SUBSTITUTE PLANTS DUE TO AVAILABILITY AND QUALITY.



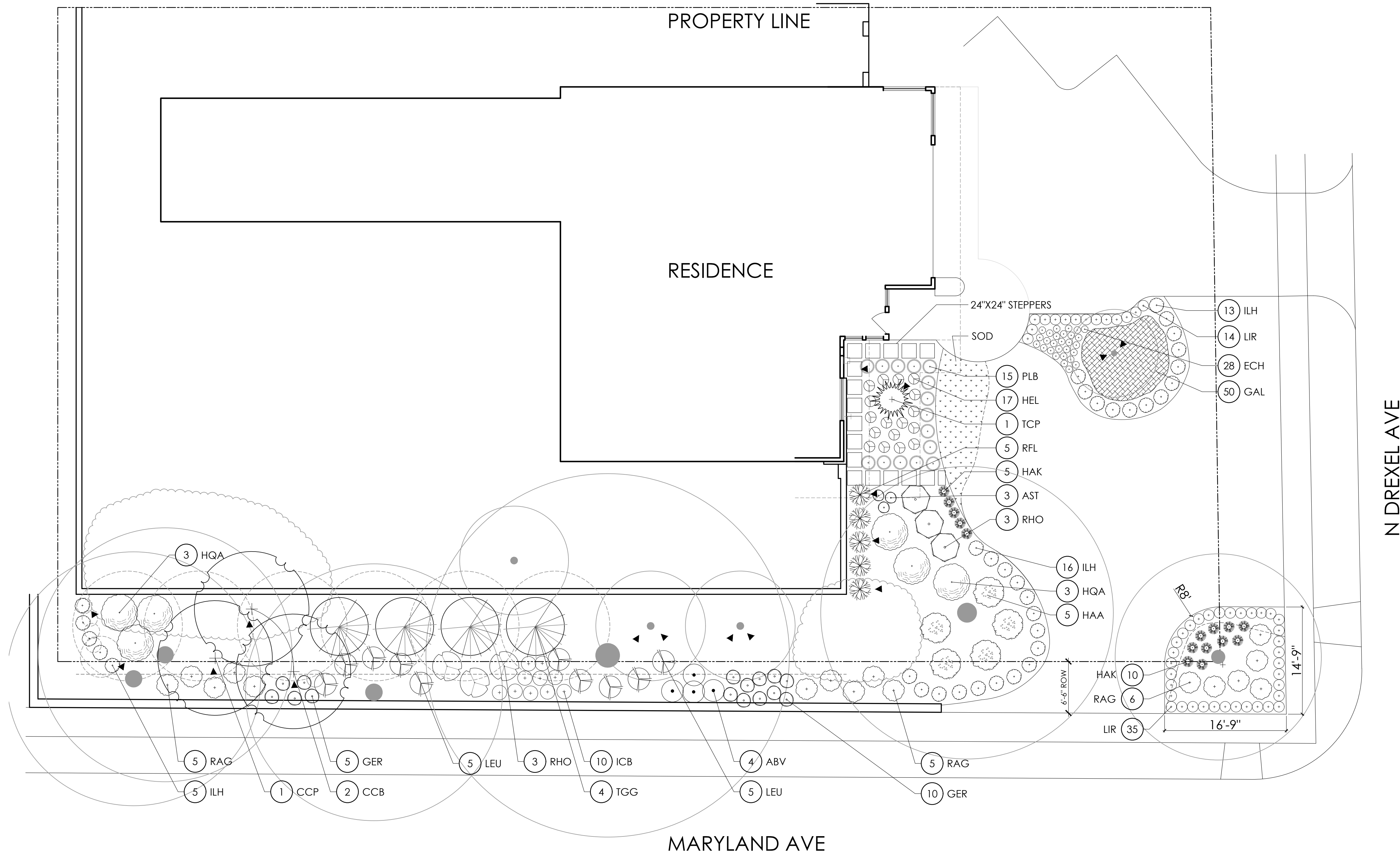
# spruce

271 S. CASSINGHAM RD.  
COLUMBUS, OH 43209  
T (614) 300-0790

SETS & REVISIONS: DATE:  
T&PGC SUBMISSION 11/8/19

## BASKES RESIDENCE

353 N. DREXEL AVE.  
COLUMBUS, OH 43209



N DREXEL AVE

### 1 LANDSCAPE PLAN

SCALE: 1/8" = 1' - 0"



#### PLANT LIST - FRONT YARD

QTY	KEY	BOTANICAL NAME	COMMON NAME	SIZE
<b>TREES</b>				
1	TCP	TSUGA CANADENSIS 'PENDULA'	WEeping HEMLOCK	5-6'
<b>SHRUBS</b>				
4	HAA	HYDRANGEA AROBRESSENS 'ANNABELLE'	ANNABELLE HYDRANGEA	#5
3	HQA	HYDRANGEA QUERCIFOLIA 'ALICE'	OAKLEAF HYDRANGEA	#5
29	ILH	ITEA VIRGINICA 'LITTLE HENRY'	VIRGINIA SWEETSPIRE	#3
5	RFL	RHAMNUS FRANGULA 'FINE LINE'	FINE LINE BUCKTHORN	#7
3	RHO	RHODODENDRON X 'PJM'	PJM RHODODENDRON	#5
6	RAG	RHUS AROMATICA 'GRO-LOW'	FRAGRANT SUMAC	#5
<b>PERENNIALS/ORNAMENTAL GRASSES</b>				
3	AST	ASTER X FRIKARTII 'MONCH'	ASTER	#1
28	ECH	ECHINACEA PURPUREA 'MAGNUS'	CONEFLOWER	#1
50	GAL	GALIUM ODORATUM	SWEET WOODRUFF	#1
15	HAK	HAKONECHLOA MACRA 'ALL GOLD'	JAPANESE FOREST GRASS	#1
17	HEL	HELLEBORUS 'FANTASY RUFFLES'	LENTEN ROSE	#1
49	LIR	LIRIOPE MUSCARI 'BIG BLUE'	LILY TURF	#1
15	PLB	PENNISETUM A. 'LITTLE BUNNY'	FOUNTAIN GRASS	#1

#### PLANT LIST - SIDE YARD

QTY	KEY	BOTANICAL NAME	COMMON NAME	SIZE
<b>TREES</b>				
2	CCB	CORNUS FLORIDA 'CHEROKEE BRAVE'	PINK DOGWOOD	2'
1	CCP	CORNUS FLORIDA 'CHEROKEE PRINCESS'	WHITE DOGWOOD	2'
<b>SHRUBS</b>				
3	HQA	HYDRANGEA QUERCIFOLIA 'ALICE'	OAKLEAF HYDRANGEA	#5
5	ILH	ITEA VIRGINICA 'LITTLE HENRY'	VIRGINIA SWEETSPIRE	#3
10	LEU	LEUCOTHOE FONTANESIANA 'RAINBOW'	FETTERBUSH	#3
3	RHO	RHODODENDRON X 'PJM'	PJM RHODODENDRON	#5
10	RAG	RHUS AROMATICA 'GRO-LOW'	FRAGRANT SUMAC	#5
4	TGG	THUJA OCCIDENTALIS 'GREEN GIANT'	ARBORVITAE	8-10'
<b>PERENNIALS/ORNAMENTAL GRASSES</b>				
4	ABV	ASTILBE X ARENDsii 'BRIDAL VEIL'	ASTILBE	#1
15	GER	GERANIUM 'ROZANNE'	CRANESBILL	#1
10	ICB	IRIS 'CAESAR'S BROTHER'	IRIS	#1

#### LOW VOLTAGE LIGHTING KEY:

(16 EA) ▲ KICHLER VLO 2700K 35 DEGREE LARGE FLOOR TEXTURED BLACK 160198KT27

PROJECT NO: XXXX

## LANDSCAPE PLAN

ALL DRAWING ARE THE ORIGINAL WORK OF SPRUCE LLC. AND MAY NOT BE DISCLOSED, USED OR DUPLICATED IN ANY WAY WITHOUT THE WRITTEN CONSENT OF SPRUCE LLC. SPRUCE LLC RESERVES THE RIGHT TO SUBSTITUTE PLANTS DUE TO AVAILABILITY AND QUALITY.





CORNUS FLORIDA 'CHEROKEE BRAVE'  
(MAY)



CORNUS FLORIDA 'CHEROKEE PRINCESS'  
(APR)



TSUGA CANADENSIS 'PENDULA'  
(EVERGREEN)



HYDRANGEA ARBORESCENS 'ANNABELLE'  
(JUNE-SEPT)



HYDRANGEA QUERCIFOLIA 'ALICE'  
(JUNE-JULY)



ITEA VIRGINICA 'LITTLE HENRY'  
(MAY-JUNE)



LEUCOTHOE FONTANESIANA 'RAINBOW'  
(MAY / EVERGREEN)



RHAMNUS FRANGULA 'FINE LINE'



RHODODENDRON X 'PJM'  
(MAY)



RHUS AROMATICA 'GRO-LOW'



THUJA OCCIDENTALIS 'GREEN GIANT'  
(EVERGREEN)



ASTER X FRIKARTII 'MONCH'  
(JUNE-SEPT)



ASTILBE X ARENSDII 'BRIDAL VEIL'  
(SUMMER)



ECHINACEA PURPUREA 'MAGNUS'  
(JUNE-AUG)



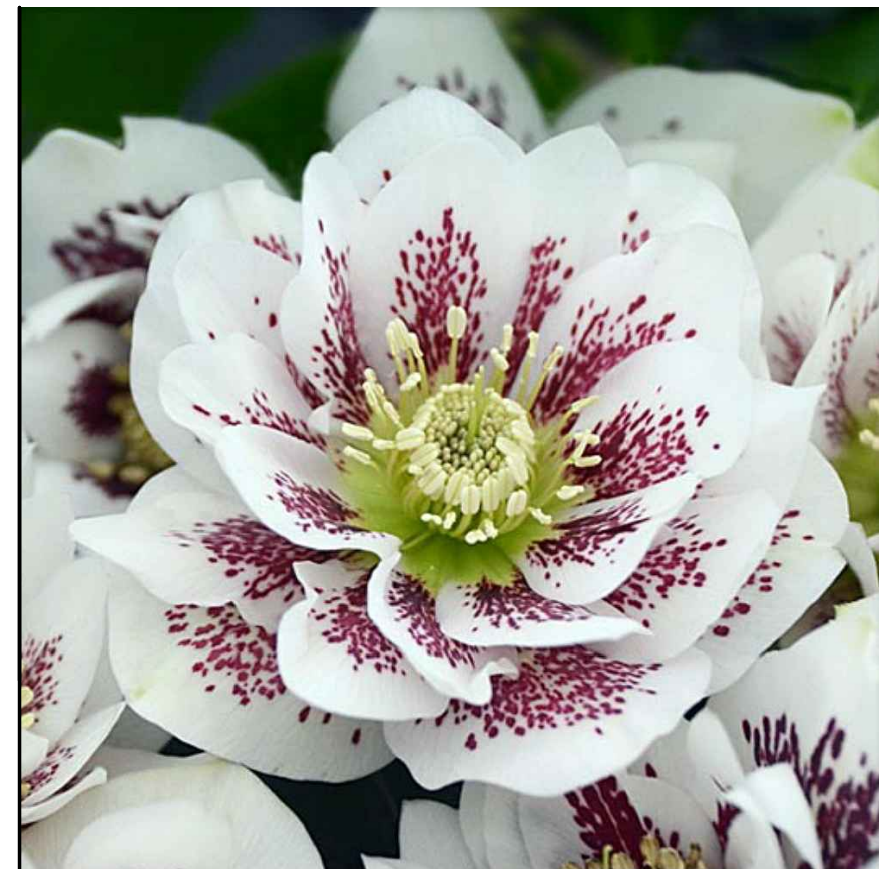
GALIUM ODORATUM  
(APR-MAY)



GERANIUM 'ROZANNE'  
(MAY-JULY)



HAKONECHLOA MACRA 'ALL GOLD'



HELLEBORUS 'FANTASY RUFFLES'  
(EARLY SPRING/LATE WINTER)



IRIS 'CAESAR'S BROTHER'  
(MAY)



LIRIOPE MUSCARI 'BIG BLUE'  
(AUG-SEPT)



NEPETA RACEMOSE 'WALKER'S LOW'  
(APR-SEPT)



PENNISETUM ALOPECUROIDES 'LITTLE BUNNY'  
(AUG-OCT)

# spruce

271 S. CASSINGHAM RD.  
COLUMBUS, OH 43209  
T (614) 300-0790

SETS & REVISIONS: DATE:  
T&PGC SUBMISSION 11/8/19

BASKES RESIDENCE  
353 N. DREXEL AVE.  
COLUMBUS, OH 43209

PROJECT NO: XXXX

## PLANT IMAGES

ALL DRAWINGS ARE THE ORIGINAL WORK OF SPRUCE LLC. AND MAY NOT BE DISCLOSED, USED OR DUPLICATED IN ANY WAY WITHOUT THE WRITTEN CONSENT OF SPRUCE LLC. SPRUCE LLC RESERVES THE RIGHT TO SUBSTITUTE PLANTS DUE TO AVAILABILITY AND QUALITY.