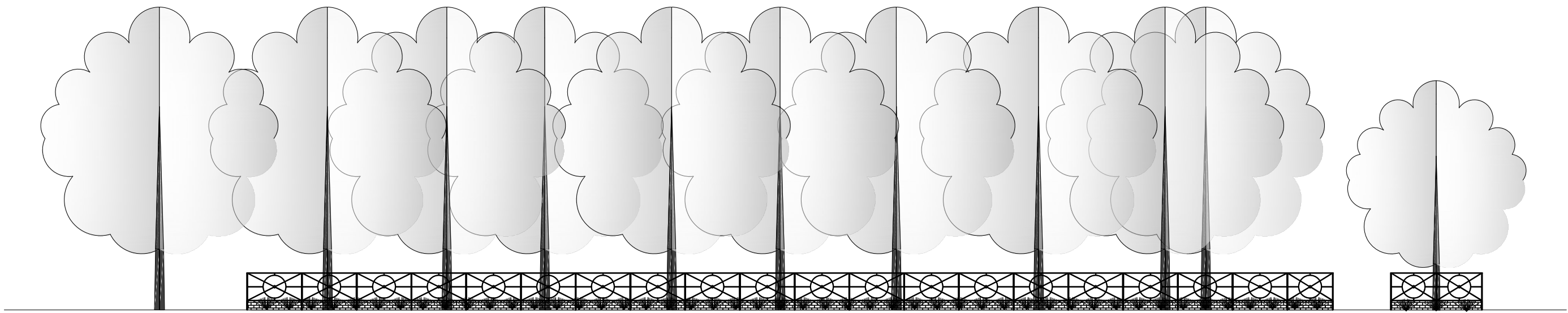
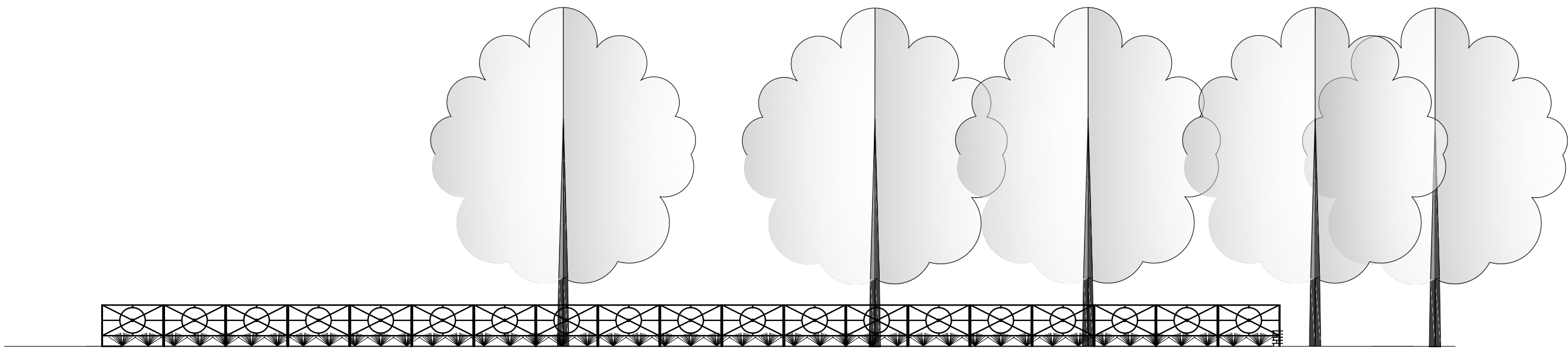


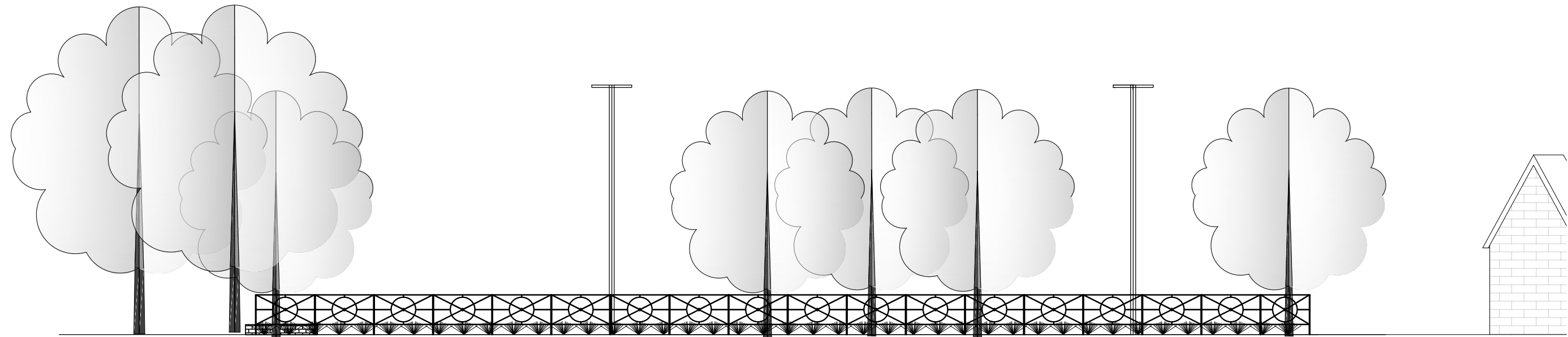
THIS DRAWING IS THE EXCLUSIVE PROPERTY OF OAKLAND DESIGN ASSOCIATES AND SHALL NOT BE REPRODUCED, TRANSFERRED, OR OTHERWISE USED WITHOUT THEIR WRITTEN PERMISSION



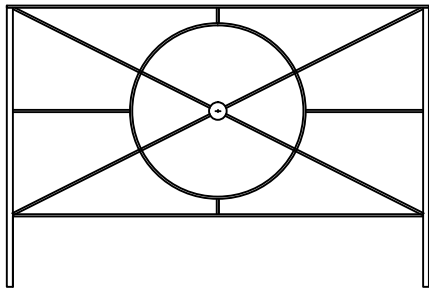
MAIN STREET
ELEVATION



EUCLAIRE STREET
ELEVATION



ALLEY ELEVATION



FENCE DETAIL
PANELS ARE 4'
TALL
5' AND 6' LONG

Project Description

Since 1929, Bexley Public Library has served as a community center for enrichment and lifelong learning in our community. As a prominent public building in the center of Bexley, situated on Main Street, the library strives to honor its history and reflect the community's appreciation for green spaces. The proposed changes to our parking lot landscape, though minor, will improve safety, encourage walking, and provide additional plant life for the enjoyment of the community. Whether our patrons are walking or driving, with these changes, the library will provide a more welcoming space to all.

As part of our much-needed parking lot resurfacing and improvement project, we're looking to expand and improve our existing parking lot landscape options. We will remove the tree in the center of the parking lot, which is currently outgrowing its space, slowly deteriorating in health, and interfering with safe lighting. The median where this tree is situated will be reduced in size and curbed, allowing for additional plant life and new appropriately-sized trees. In addition, a curbed area will be created in the northeast corner of the parking lot (intersection of Main and Euclidean) to create a new landscape area.

Recommended information for Project Understanding

- a. Irrigation and maintenance plan
The proposed landscaping plan will include hardy plants and trees which should thrive with rainwater and will not require specialized irrigation systems. Our irrigation plan will include three components: regular inspections by our property manager, monthly maintenance and inspection by our landscape contractors, and the installation and maintenance of slow release watering bags on all necessary trees.
- b. Hardscape materials
The proposed landscaping plan includes 48 inch tall custom fencing on the east and west sides of the parking lot to match existing north side (Main Street facing) fencing.

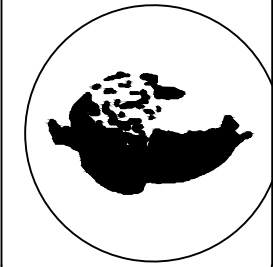
They will match the entry to the library entrance and future landscape work on the library.

REVISIONS	BY

BEXLEY PUBLIC LIBRARY
MAIN STREET
BEXLEY, OHIO

landscape architecture
site planning
construction management
1156 Oakland Park Avenue
Columbus, Ohio 43224
(614) 265-384

Oakland
Design
Associates



DRAWN GARY HUSTON CHECKED
DATE AUGUST 22, 2018
SCALE N.T.S.
JOB NO.
SHEET L-2 OF