

Ordinance 43 - 24

By: Sam Marcellino

An Ordinance authorizing the Mayor and Auditor to sign a Consent and Hold Harmless Agreement on behalf of the City of Bexley with the property owner 44 S Parkview (Parcel No. 020-004348-00), regarding improvements made upon and within the City owned right-of-way between the sidewalk and the property line.

BE IT ORDAINED BY THE COUNCIL OF THE CITY OF BEXLEY, OHIO:

Section 1.

That the property owner at 44 S. Parkview Avenue (Parcel No. 020-004348-00) is permitted to install two, 2 ft wide x 2 ft deep x 3 ft tall decorative stone columns with the address in the Right-of-Way between the sidewalk and the property line as described above and in Exhibit "A" attached hereto and incorporated herein by reference.

Section 2.

That the Mayor and Auditor are authorized to enter into a Consent and Hold Harmless Agreement with the property owners, in form and substance satisfactory to the City Attorney, authorizing the encroachments as proposed in accordance with the submitted request on the condition that the property owners assume all responsibility for damage, loss and injury arising out of the location of said building features, including any additional cost to the City of Bexley incurred in connection with its use of right-of-way occasioned by the location of the improvements.

Section 3.

That this Ordinance shall take effect and be in force from and after the earliest period allowed by law.

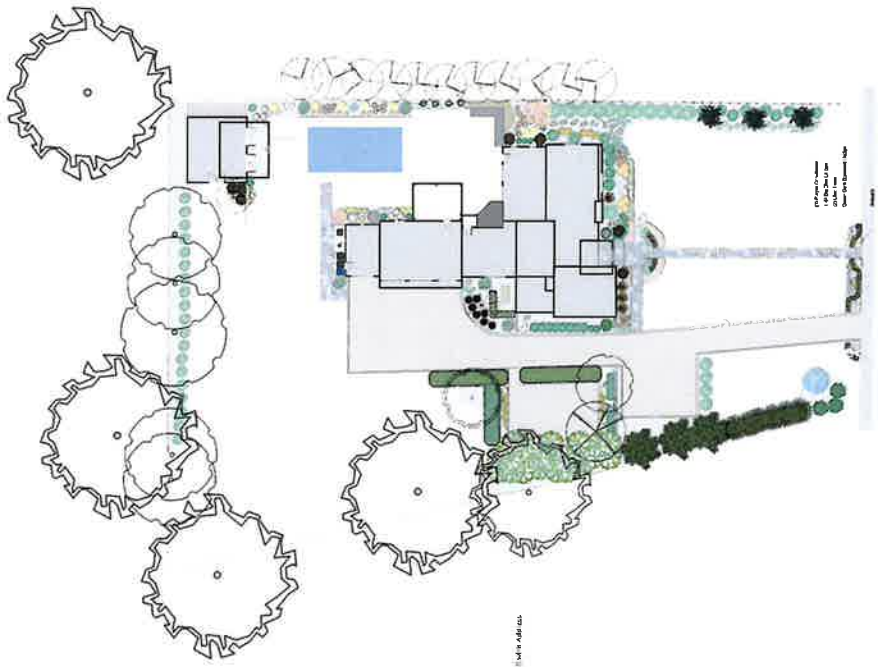
Passed: Dec 10, 2024

Attest: 
Matt McPeek, Clerk of Council


Monique Lampke, President of Council


Ben Kessler, Mayor

First Reading: November 19, 2024
Second Reading: December 3, 2024
Third Reading: December 10, 2024



- LEGEND**
- 1) Tree - Oak Leafless
 - 2) Tree - Red Maple
 - 3) Tree - Red Maple
 - 4) Tree - Red Maple
 - 5) Tree - Red Maple
 - 6) Tree - Red Maple
 - 7) Tree - Red Maple
 - 8) Tree - Red Maple
 - 9) Tree - Red Maple
 - 10) Tree - Red Maple
 - 11) Tree - Red Maple
 - 12) Tree - Red Maple
 - 13) Tree - Red Maple
 - 14) Tree - Red Maple
 - 15) Tree - Red Maple
 - 16) Tree - Red Maple
 - 17) Tree - Red Maple
 - 18) Tree - Red Maple
 - 19) Tree - Red Maple
 - 20) Tree - Red Maple
 - 21) Tree - Red Maple
 - 22) Tree - Red Maple
 - 23) Tree - Red Maple
 - 24) Tree - Red Maple
 - 25) Tree - Red Maple
 - 26) Tree - Red Maple
 - 27) Tree - Red Maple
 - 28) Tree - Red Maple
 - 29) Tree - Red Maple
 - 30) Tree - Red Maple
 - 31) Tree - Red Maple
 - 32) Tree - Red Maple
 - 33) Tree - Red Maple
 - 34) Tree - Red Maple
 - 35) Tree - Red Maple
 - 36) Tree - Red Maple
 - 37) Tree - Red Maple
 - 38) Tree - Red Maple
 - 39) Tree - Red Maple
 - 40) Tree - Red Maple
 - 41) Tree - Red Maple
 - 42) Tree - Red Maple
 - 43) Tree - Red Maple
 - 44) Tree - Red Maple
 - 45) Tree - Red Maple
 - 46) Tree - Red Maple
 - 47) Tree - Red Maple
 - 48) Tree - Red Maple
 - 49) Tree - Red Maple
 - 50) Tree - Red Maple
 - 51) Tree - Red Maple
 - 52) Tree - Red Maple
 - 53) Tree - Red Maple
 - 54) Tree - Red Maple
 - 55) Tree - Red Maple
 - 56) Tree - Red Maple
 - 57) Tree - Red Maple
 - 58) Tree - Red Maple
 - 59) Tree - Red Maple
 - 60) Tree - Red Maple
 - 61) Tree - Red Maple
 - 62) Tree - Red Maple
 - 63) Tree - Red Maple
 - 64) Tree - Red Maple
 - 65) Tree - Red Maple
 - 66) Tree - Red Maple
 - 67) Tree - Red Maple
 - 68) Tree - Red Maple
 - 69) Tree - Red Maple
 - 70) Tree - Red Maple
 - 71) Tree - Red Maple
 - 72) Tree - Red Maple
 - 73) Tree - Red Maple
 - 74) Tree - Red Maple
 - 75) Tree - Red Maple
 - 76) Tree - Red Maple
 - 77) Tree - Red Maple
 - 78) Tree - Red Maple
 - 79) Tree - Red Maple
 - 80) Tree - Red Maple
 - 81) Tree - Red Maple
 - 82) Tree - Red Maple
 - 83) Tree - Red Maple
 - 84) Tree - Red Maple
 - 85) Tree - Red Maple
 - 86) Tree - Red Maple
 - 87) Tree - Red Maple
 - 88) Tree - Red Maple
 - 89) Tree - Red Maple
 - 90) Tree - Red Maple
 - 91) Tree - Red Maple
 - 92) Tree - Red Maple
 - 93) Tree - Red Maple
 - 94) Tree - Red Maple
 - 95) Tree - Red Maple
 - 96) Tree - Red Maple
 - 97) Tree - Red Maple
 - 98) Tree - Red Maple
 - 99) Tree - Red Maple
 - 100) Tree - Red Maple

SCALE: 1 inch = 20 ft.
(When printed on 24x36 inch paper)

Prepared by
Ryan Brothers' Landscaping

1238 Riverwood Dr.
Columbus, OH 43233
Phone Number: 614-690-2779
E-mail: ryan@ryanbrothers.com

Landscape Plan

44 S. Parkview Ave.
Bellefonte, PA 16823
March 6, 2014

