

ORDINANCE NO. 23 -00

BY: Mark Masser

An Ordinance to approve an architectural change to a condominium previously approved pursuant to Ordinance No. 1-66 for a condominium development on Westland Avenue known as Westland Condominiums.

WHEREAS, the City of Bexley adopted Ordinance No. 1-66 which rezoned property at 383 Westland Avenue from single-family residential zoning (Class 1) "to a special class known as Multiple Dwellings Class under which and in which multiple dwellings may be erected by a special permit of Council in accordance with plans, specifications, and plat plans submitted to and approved by Council and Council may qualify such construction and the use and occupancy by the terms and conditions contained in such permit"; and,

WHEREAS, the City of Bexley adopted Ordinance No. 8-72 which transferred 383 Westland Avenue from the Multiple Dwellings Class to the Planned Unit Residential Zoning District (PUR) with the same restrictions; and,

WHEREAS, the owner of 383 Westland Avenue, Rosemary Joyce, has requested design changes for 383 Westland Avenue which are consistent with the detailed development plan; and,

WHEREAS, the Westland Condominium Homeowner's Association has approved the changes. NOW, THEREFORE,

BE IT ORDAINED BY THE COUNCIL OF THE CITY OF BEXLEY, OHIO:

Section 1. That the changes to the condominium at 383 Westland Avenue described by architectural drawings, copies of which are attached to this Ordinance and are incorporated herein by this reference, are hereby approved.

Section 2. That this Ordinance shall take effect and be in force from and after the earliest period allowed by law.

Passed: 3/14/00, 2000

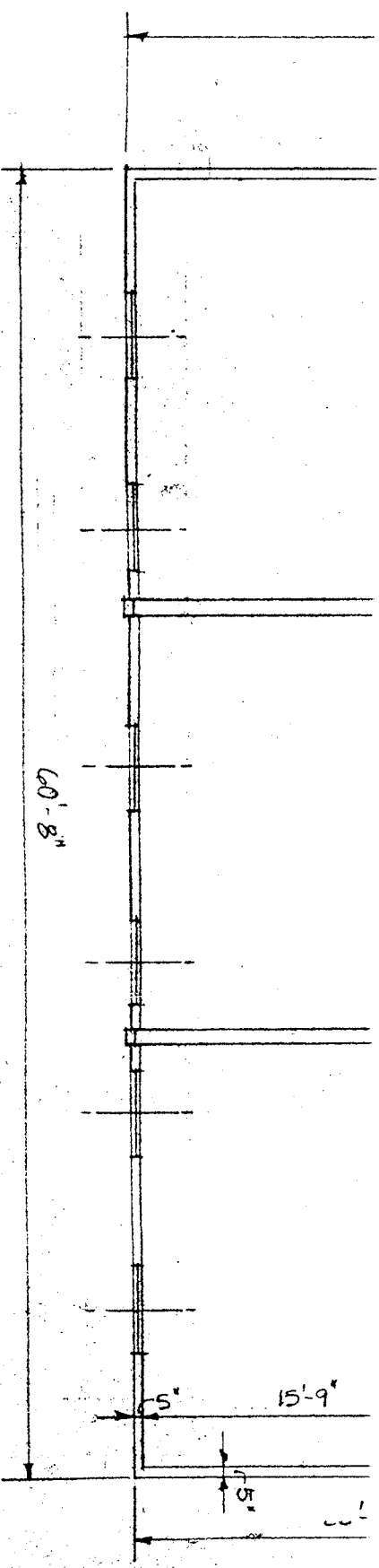
[Signature]
President of Council

Attest: [Signature]
Clerk of Council

Approved: 3/14, 2000

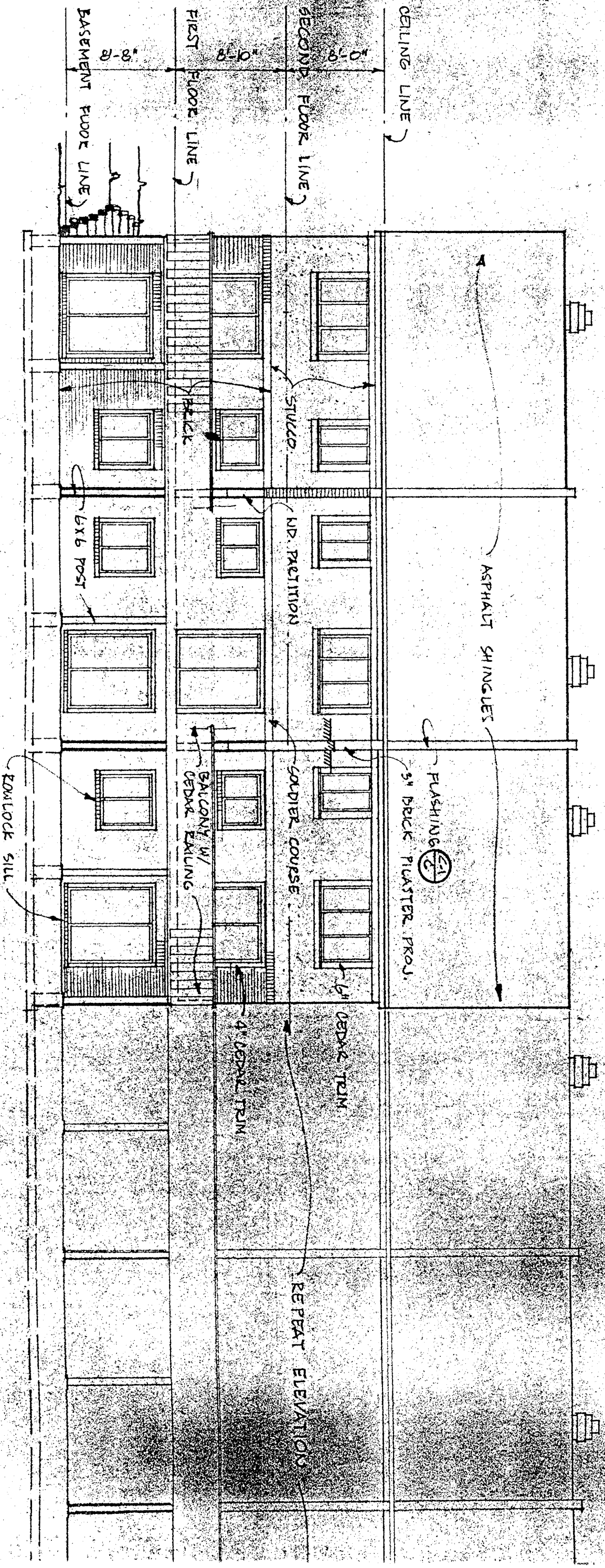
[Signature]
David H. Madison, Mayor

*3/14/00 Three reading rule
suspended. Adopted*



SECOND FLOOR PLAN

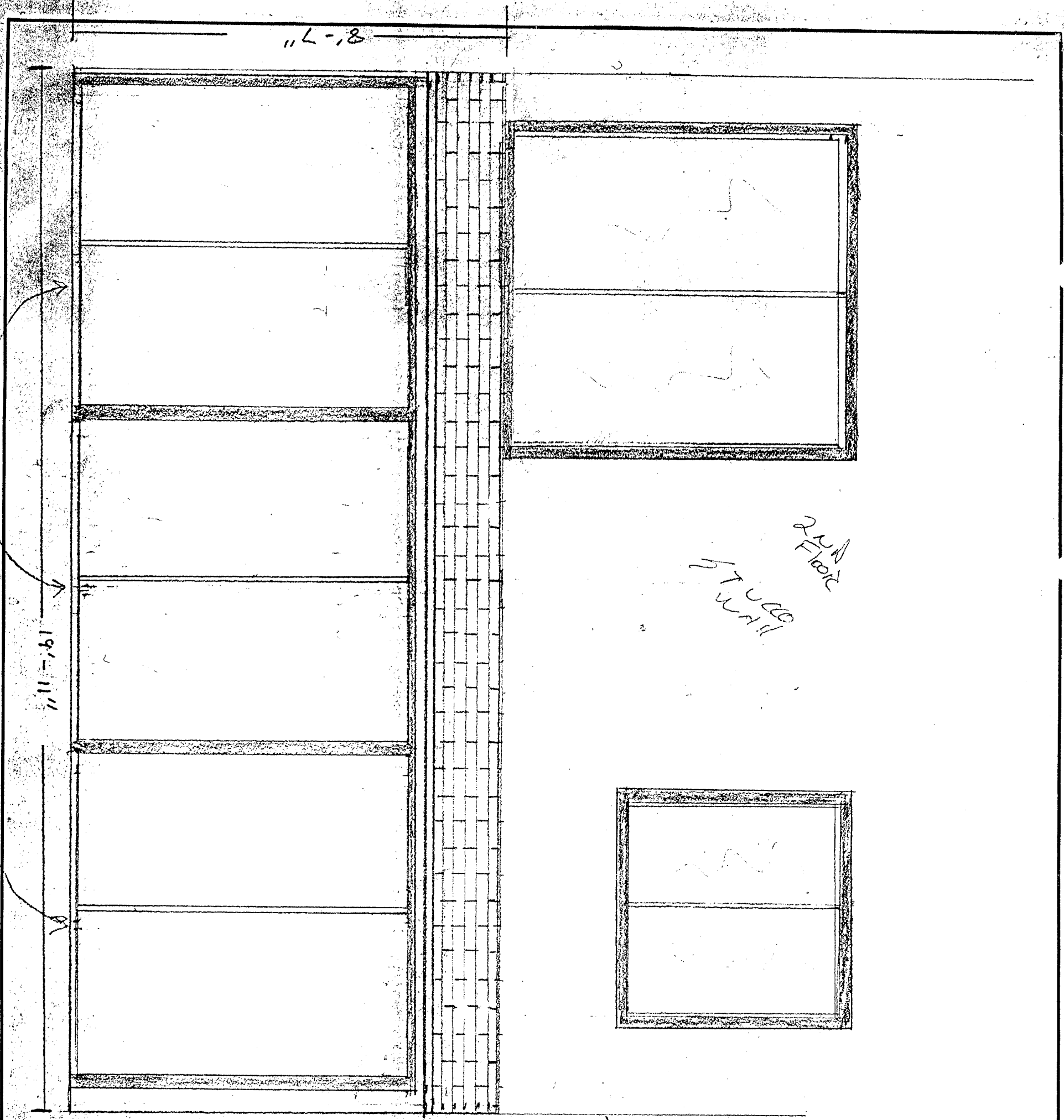
1/8" = 1'-0"



BACK ELEVATION

1/8" = 1'-0"

West Side of Unit 383, View from Inside of Deck



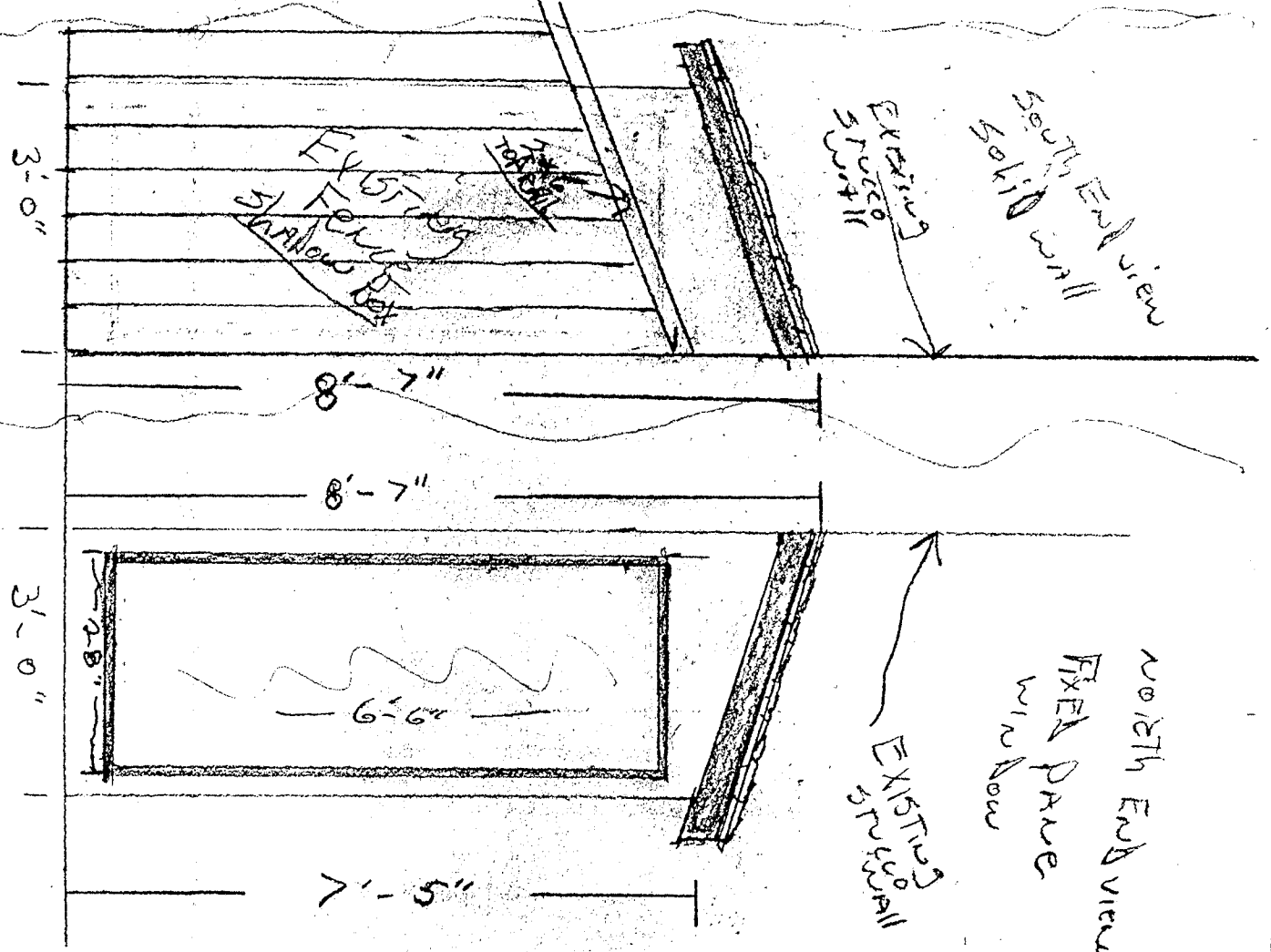
3 - sliding patio doors (6' EACH)

8'-7"

19'-11"

2nd Floor
PTCCO
Wall

South End View
(lid wall)



North End View

South End view
Solid wall

Existing
PTCCO
Wall

North End view
Fixed
Pave
window

Existing
PTCCO
Wall

Existing
Fence
Shallow bed

3'-0"

8'-7"

8'-7"

3'-0"

6'-6"

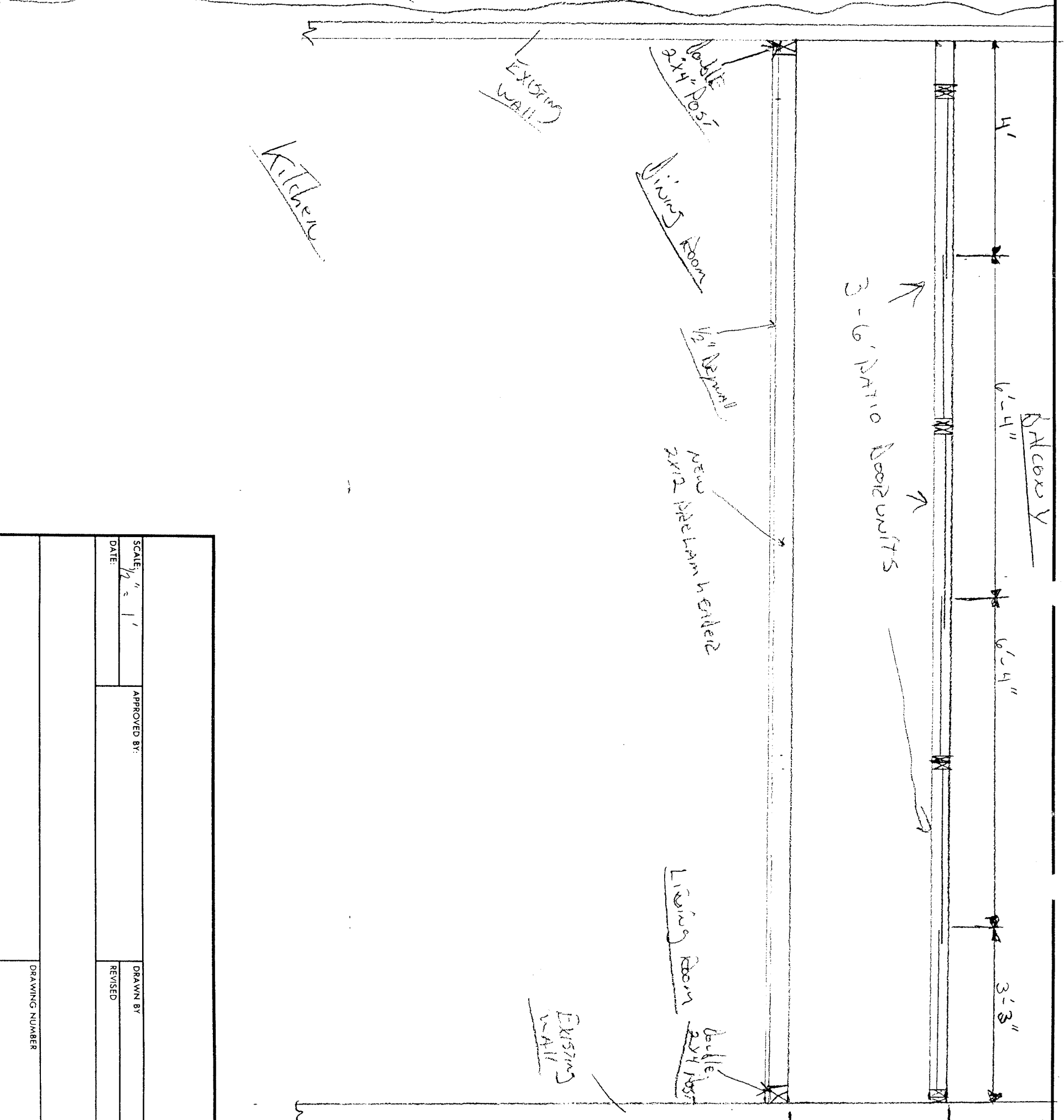
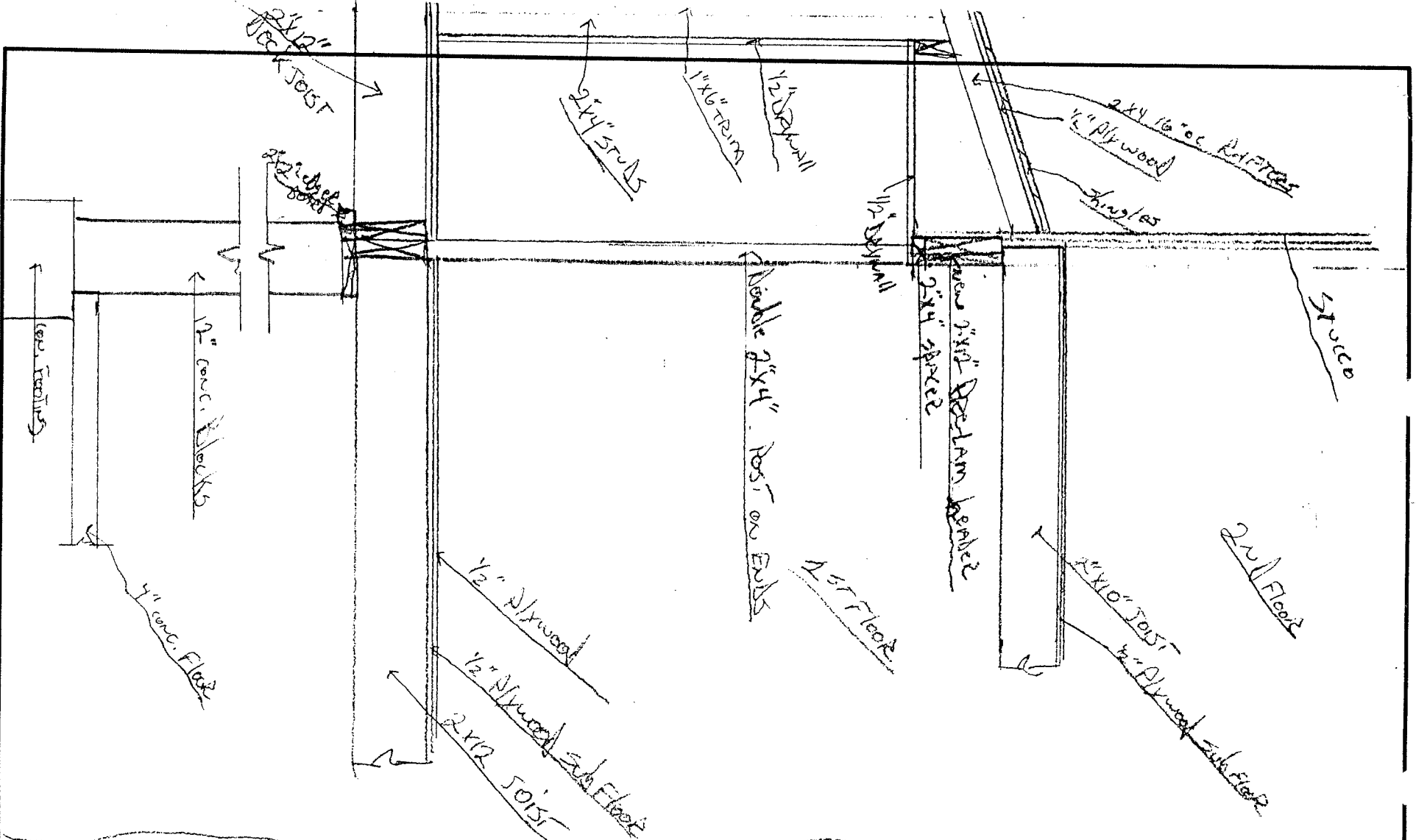
7'-5"

SCALE: 1/2" = 1'
DATE:

APPROVED BY:

DRAWN BY:
REVISED

DRAWING NUMBER



SCALE: 1/8" = 1'	APPROVED BY:
DATE: 10/2/01	DRAWN BY:
	REVISED:
DRAWING NUMBER	