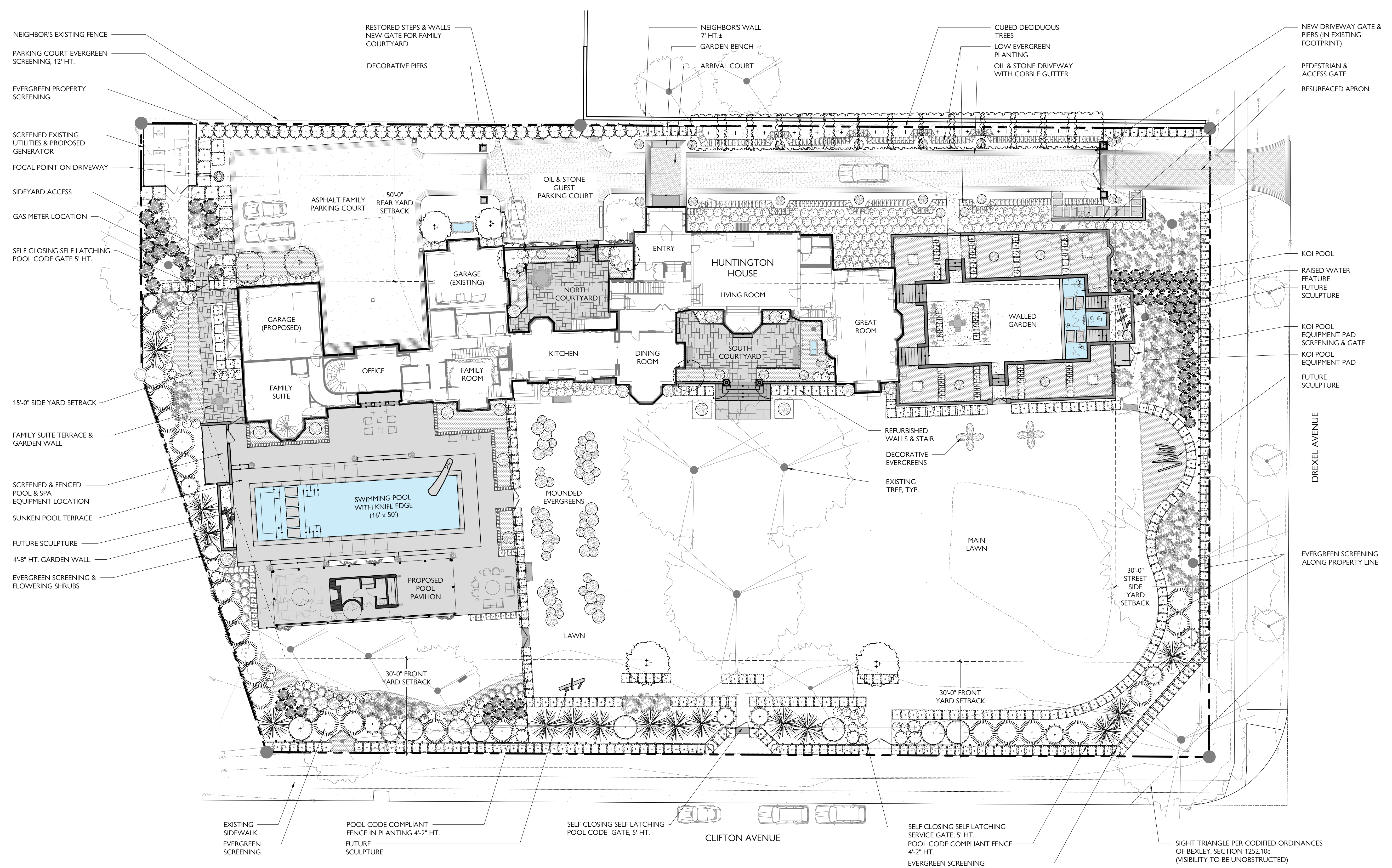


EXHIBIT 6



1. Survey provided by Landmark Survey Group, Inc.
2. Kathryn Herman Design, LLC takes no responsibility for the accuracy of the information provided by the survey. If the Contractor determines inaccuracies on site, the Contractor shall alert the Landscape Designer prior to construction of any part of the design affected by the perceived inaccuracy.
3. The Contractor shall verify the location of all utilities prior to commencement of any construction activities. The Contractor takes full responsibility for any utilities damaged due to not verifying utility locations, and will repair any damage at the Contractor's own expense.
4. The Contractor shall obtain all permits for construction activities as required by the local municipality, state and federal regulations. All permits shall be obtained prior to commencement of the work associated with the permit. The Contractor shall abide by all rules and regulations set forth by the permits required for construction activities.
5. The Contractor shall at all times keep the construction site in an orderly condition, store materials in a pre-determined location, minimize site disturbance, and remove all debris and excess material from the site.
6. The Contractor shall maintain any erosion control measures utilized on site.
7. In the event that Kathryn Herman Design, LLC is not engaged in construction administration and the direct supervision of project installation, nor shall it be liable for any damages resulting from attempts by other parties to execute the plans and details included in this document.

NO.	DATE	SHEET & DESCRIPTION	APP.

FILE: LP-1.00 LP-1.00 LANDSCAPE PLAN.DWG
DRAWN BY: IH
CHECKED BY: EH
SAVE DATE: 2021-10-14
ISSUE DATE: 2021-10-14

K | H | D
 KATHRYN HERMAN DESIGN
 215 ELM STREET
 NEW CANAAN, CT 06840
 P.203.966.1221

PROJECT:
 81 NORTH DREXEL AVENUE
 BEXLEY, OHIO

DWG. TITLE:
 LANDSCAPE PLAN

NOT FOR CONSTRUCTION	SHEET NO.
SITE IMPROVEMENTS	L-1.00

© KATHRYN HERMAN DESIGN, LLC

