



SHAH RESIDENCE
424 SOUTH COLUMBIA AVENUE
BEXLEY, OHIO 43209

JONES
BRIAN KENT JONES ARCHITECTS, INC.
585 SOUTHERN ST., COLUMBUS, OH 43215

ELEVATIONS
17060
20 APRIL 2018
CONSTRUCTION DOCUMENTS

REVISIONS
1. P-12-18
2. P-12-18
3. P-12-18
4. P-12-18
5. P-12-18

A5.1

- Exterior Finish Coded Notes:**
1. Brick veneer - painted white
 2. Cut limestone lintels
 3. Cut limestone sills
 4. Cut limestone band
 5. Wood bracket
 6. Not Used
 7. Stone steps and porch deck
 8. Cut stone wall cap
 9. Painted built up wood cornice
 10. Pre-finished aluminum gutters and downspouts - charcoal color (copper option)
 11. Asphalt shingles (synthetic slate option)
 12. Standing seam metal roof - charcoal color
 13. Aluminum clad wood windows w/ sll - black color
 14. Painted wood shutters
 15. Iron gate
 16. Brick rowlock watertable
 17. Direct vent pizza oven exhaust
 18. (2) 4'-0"x7'-0" skylights
 19. Board and batten siding - painted white
 20. Decorative wood louver
 21. Metal bracket - black painted
 22. Clapboard siding - 8" exposure
 23. Fiber cement trim boards - painted white
 24. Flat seam copper roof
 25. Clopay Modern Steel garage door - smooth finish - full lite - black color
 26. Painted trim board column wrap and mouldings
 27. Painted wood bracket
 28. Corbelled brick bracket - white painted
 29. Pps-fabricated light monitor - black color
 30. Custom metal screen



WEST ELEVATION
1/4" = 1'-0"



NORTH ELEVATION
1/4" = 1'-0"

BULLETIN : 5



SHAH RESIDENCE
424 South Columbia Avenue
BEXLEY, OHIO 43209

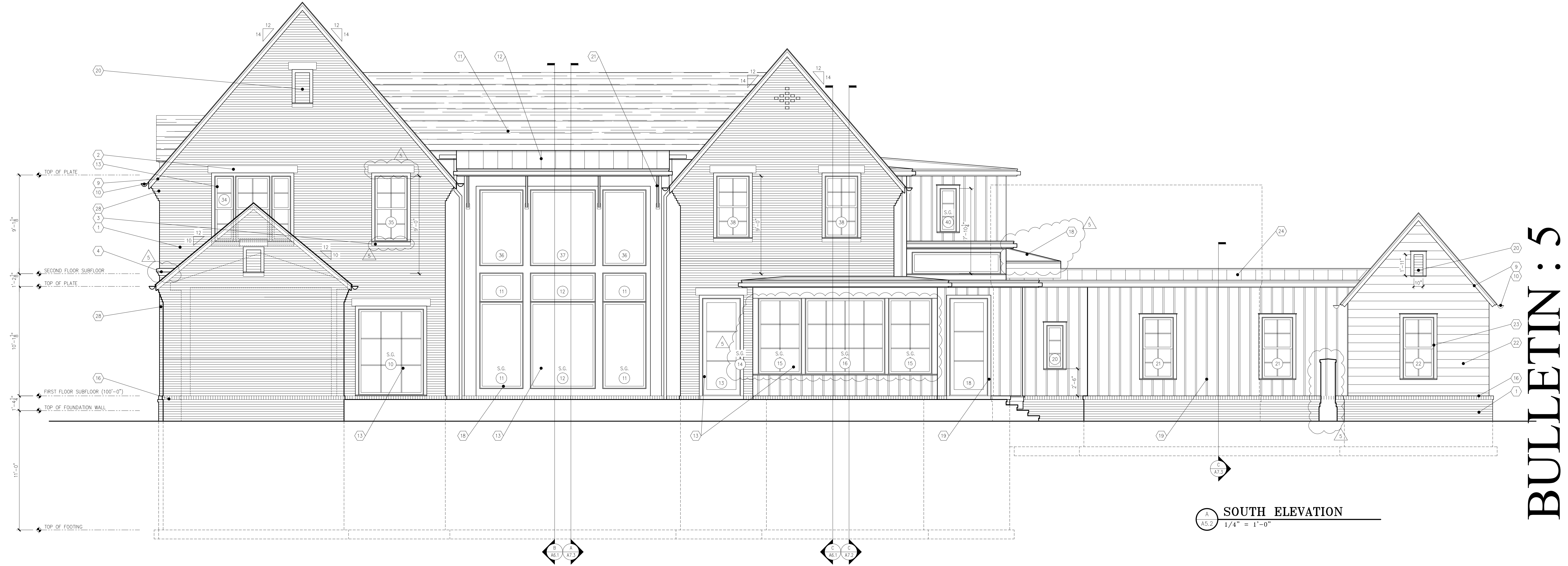
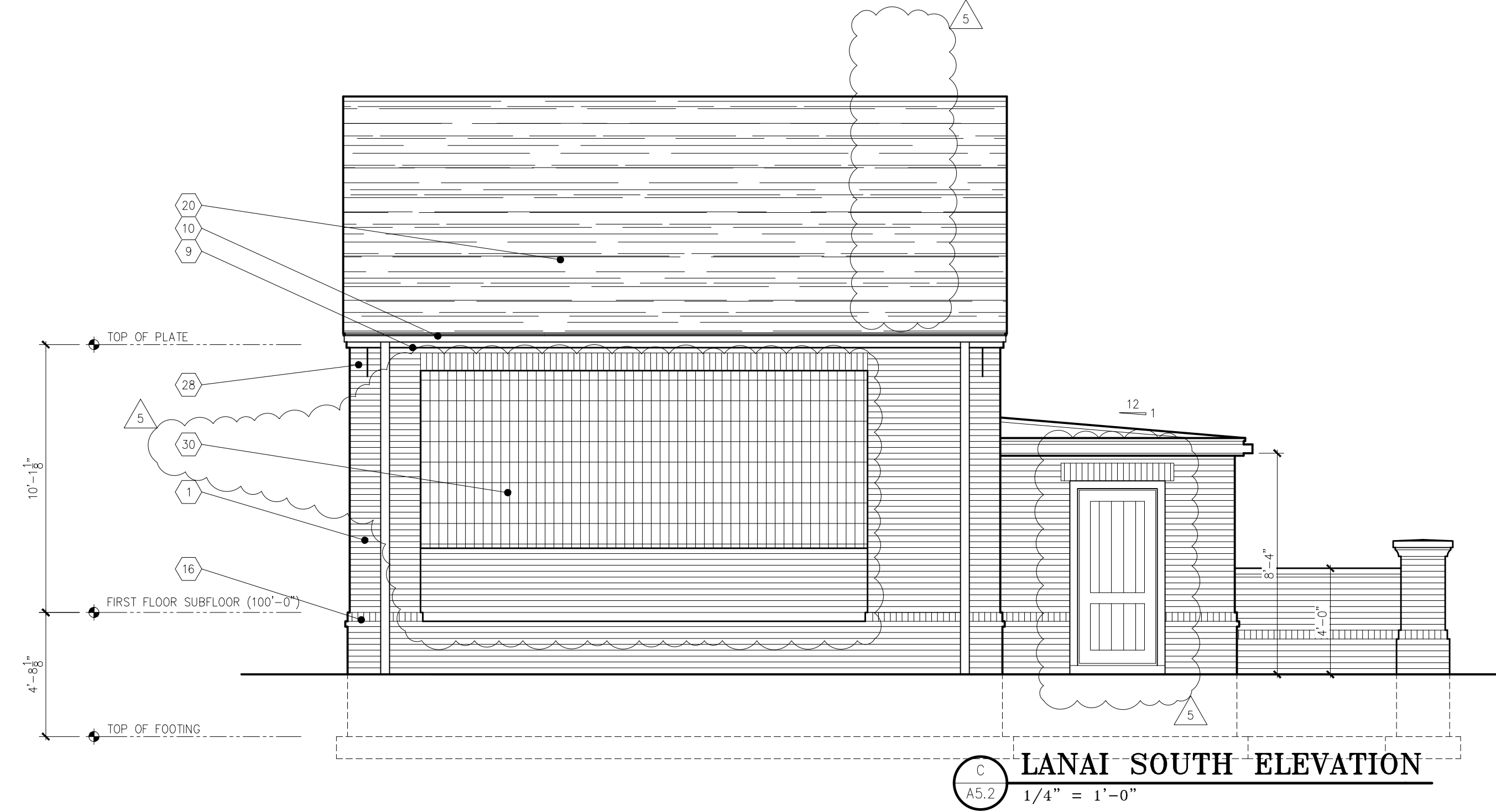
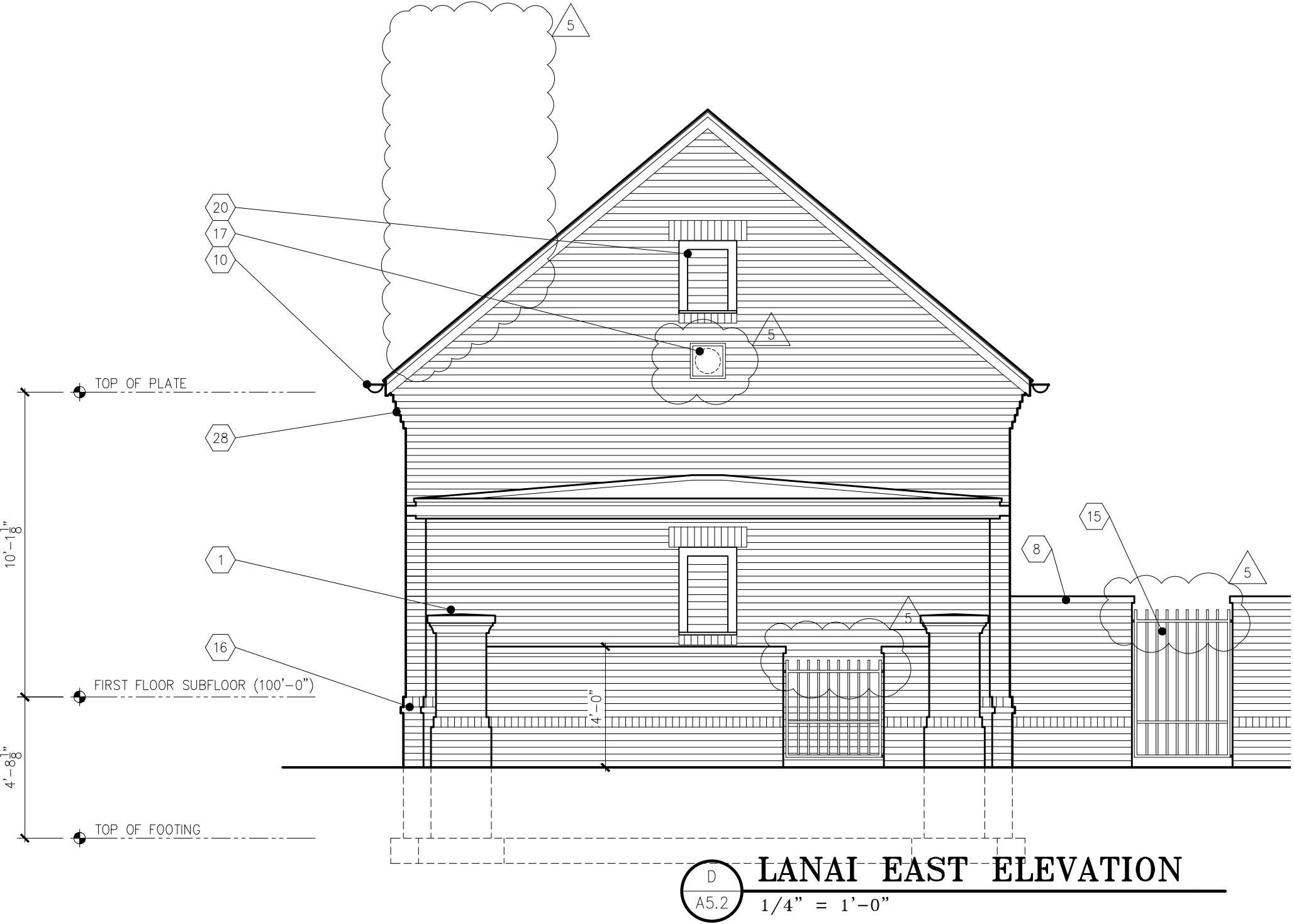
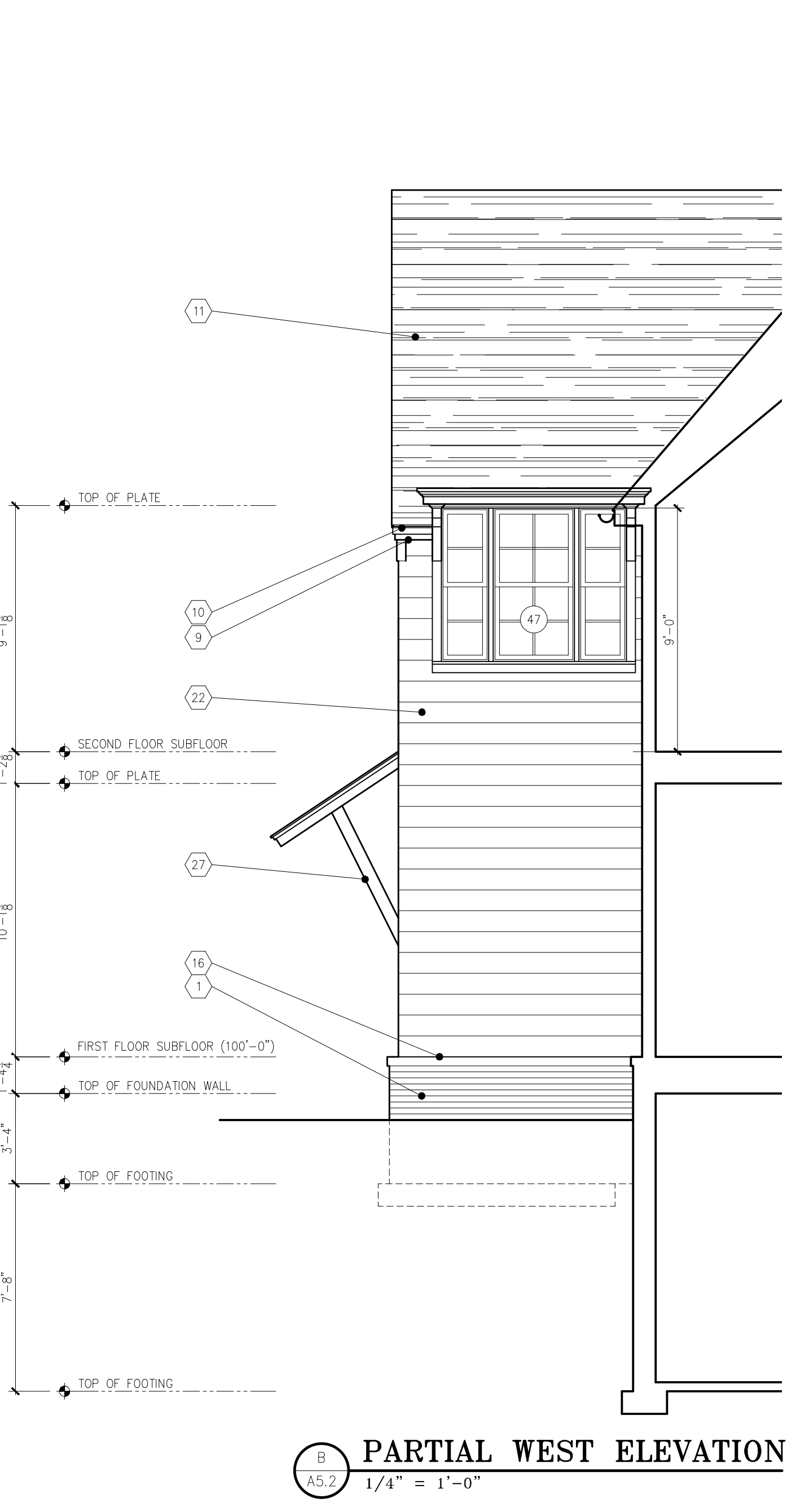
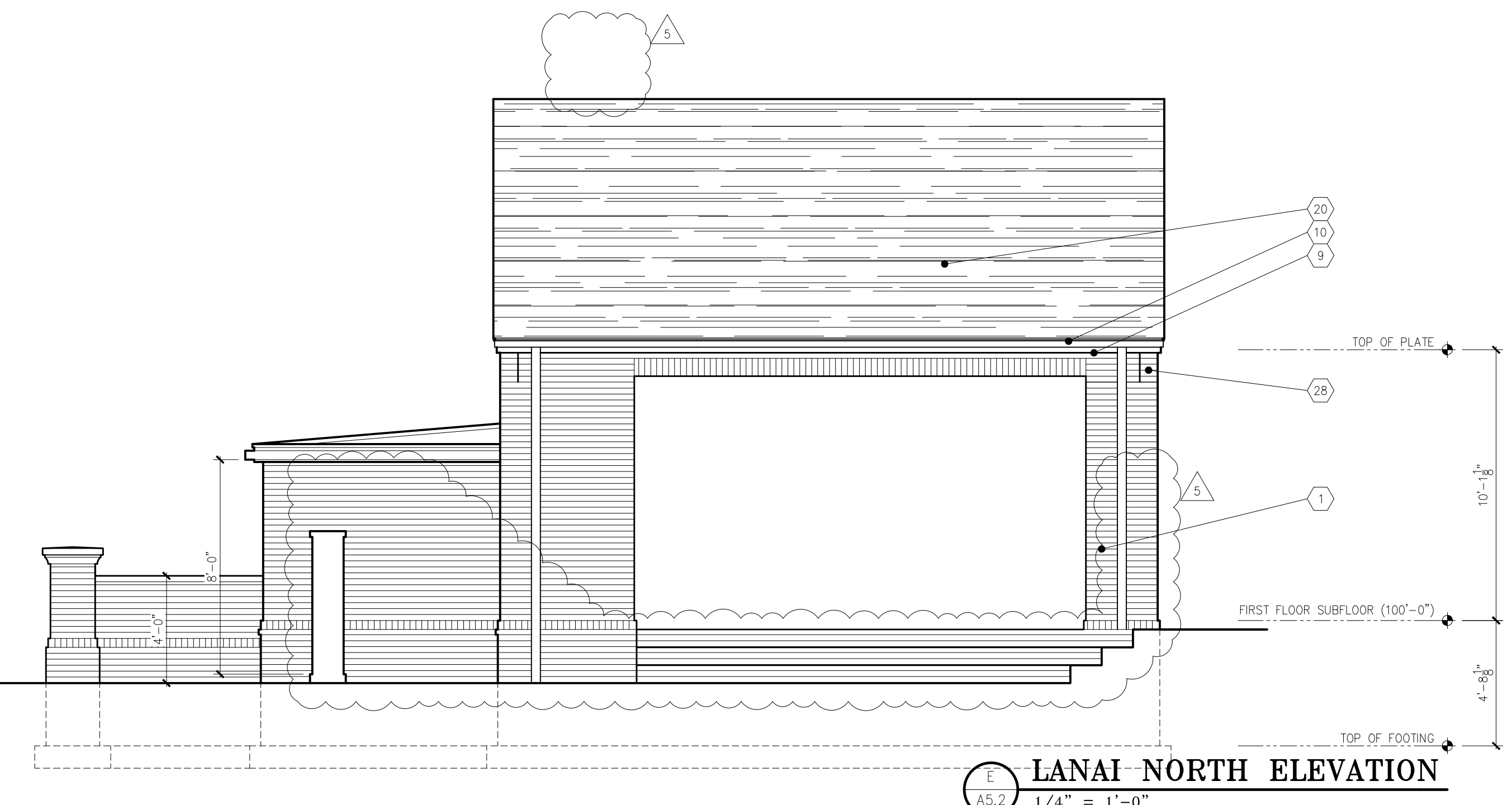
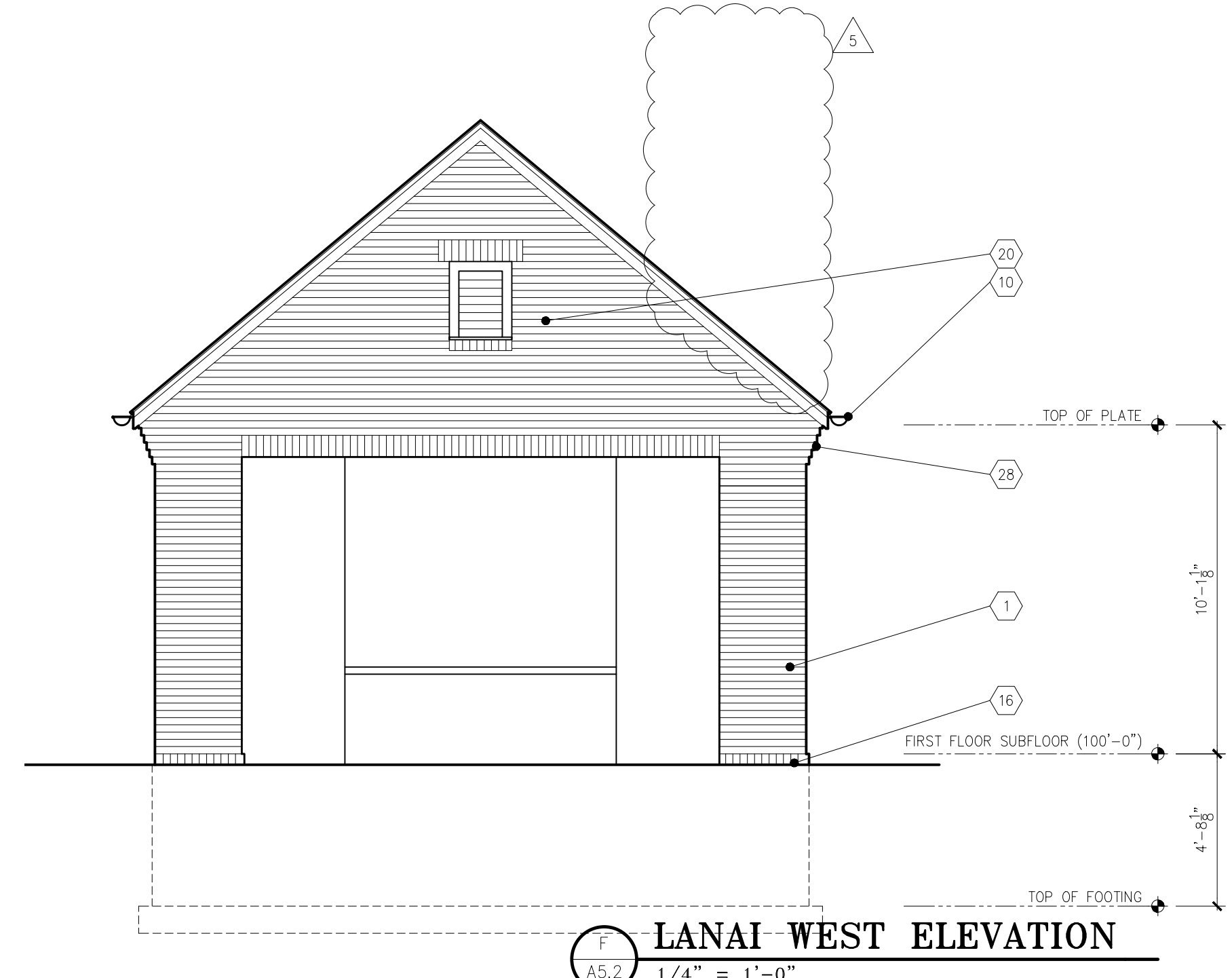
JONES
BRIAN KENT JONES ARCHITECTS, INC.
583 SOUTHERN ST. COLUMBUS, OH 43215

ELEVATIONS
17060
20 APRIL 2018
CONSTRUCTION DOCUMENTS

REVISIONS
1. P-12-18
2. 02-21-18
3. 06-19
4. 08-01
5. 09-20

A5.2

- Exterior Finish Coded Notes:**
1. Brick veneer - painted white
 2. Cut limestone lintels
 3. Cut limestone sills
 4. Cut limestone band
 5. Wood bracket
 6. Not Used
 7. Stone steps and porch deck
 8. Cut stone wall cap
 9. Painted built up wood cornice
 10. Pre-finished aluminum gutters and downspouts - charcoal color (copper option)
 11. Asphalt shingles (synthetic slate option)
 12. Standing seam metal roof - charcoal color
 13. Aluminum clad wood windows w/ sll - black color
 14. Painted wood shutters
 15. Iron gate
 16. Brick rowlock watertable
 17. Direct vent pizza oven exhaust
 18. (2) 4'-0"x7'-0" skylights
 19. Board and batten siding - painted white
 20. Decorative wood louver
 21. Metal bracket - black painted
 22. Clapboard siding - 8" exposure
 23. Fiber cement trim boards - painted white
 24. Flat seam copper roof
 25. Clopay Modern Steel garage door - smooth finish - full lite - black color
 26. Painted trim board column wrap and mouldings
 27. Painted wood bracket
 28. Corbelled brick bracket - white painted
 29. Pps-fabricated light monitor - black color
 30. Custom metal screen



BULLETIN : 5



BEXLEY, Ohio 43209
 SHAH RESIDENCE
 424 South Columbia Avenue

OWNERSHIP AND USE OF DOCUMENTS:
 DRAWINGS AND SPECIFICATIONS AS INSTRUMENTS OF PROFESSIONAL SERVICE ARE AND SHALL REMAIN THE PROPERTY OF THE ARCHITECT. THESE DOCUMENTS
 ARE TO BE USED ONLY FOR THE PROJECT AND SITE SPECIFICALLY IDENTIFIED HEREIN. NO PART OF THESE DOCUMENTS IS TO BE REPRODUCED OR TRANSMITTED IN ANY FORM OR BY ANY MEANS, WITHOUT THE PRIOR SPECIFIC WRITTEN AUTHORIZATION OF BRIAN KENT JONES ARCHITECTS, INC.

JONES
 BRIAN KENT JONES ARCHITECTS, INC.
 583 SOUTHERN ST., COLUMBUS, OH 43215

ELEVATIONS
 17060
 20 APRIL 2018
 CONSTRUCTION DOCUMENTS

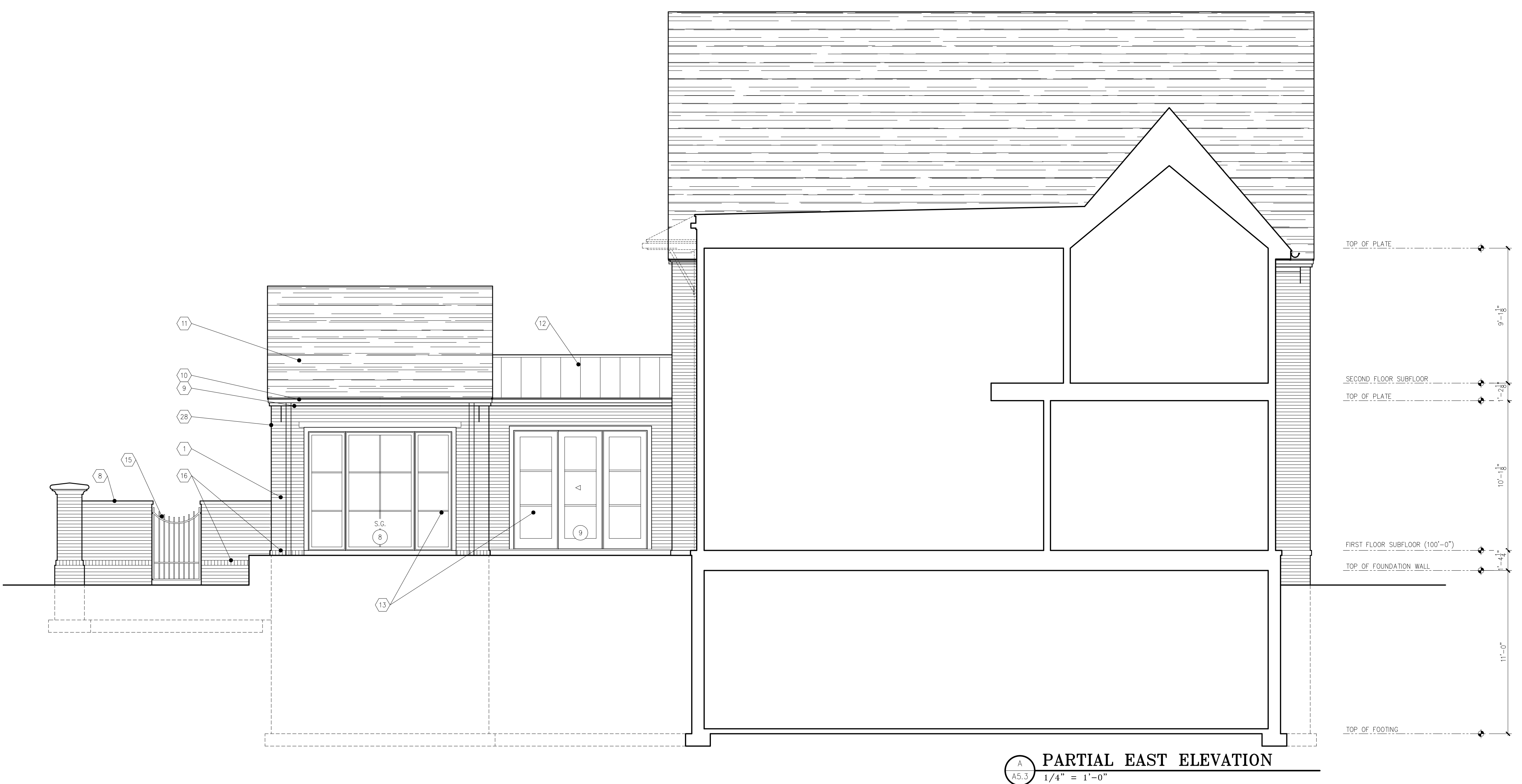
REVISIONS	DATE	DESCRIPTION
1	18-12-18	
2	19-02-19	
3	19-06-19	
4	19-08-19	
5	19-09-20	

A5.3

WINDOW & EXTERIOR DOOR SCHEDULE							
SIZES ARE BASED ON MARVIN ULTIMATE CLAD WINDOWS AND DOORS							
NUMBER	SIZE	WINDOW / DOOR TYPE	COLOR	NUMBER	SIZE	WINDOW / DOOR TYPE	COLOR
1	3030	DOUBLE HUNG	COCONUT CREAM	27	3030	DOUBLE HUNG	COCONUT CREAM
2	3642	DOUBLE HUNG	COCONUT CREAM	28	5'-6" x 9'-0"	FULL LITE ENTRY DOOR	BRONZE
3	4042	DOUBLE HUNG	COCONUT CREAM	29	3030	DOUBLE HUNG	COCONUT CREAM
4	3'-6" x 9'-0"	SOLID WOOD ENTRY DOOR W/ SIDELITES	BLACK	30	3232	DOUBLE HUNG	COCONUT CREAM
5	4042	DOUBLE HUNG	COCONUT CREAM	31	3232	DOUBLE HUNG	COCONUT CREAM
6	1848	CASEMENT	COCONUT CREAM	32	3232	DOUBLE HUNG	COCONUT CREAM
7	3234	DOUBLE HUNG	COCONUT CREAM	33	3232	DOUBLE HUNG	COCONUT CREAM
8	3096/5696/3096	(3)CASEMENT	BRONZE	34	1632/3232/1632	(3)DOUBLE HUNG	COCONUT CREAM
9	(3)5'-0" x 8'-0"	FULL LITE SLIDING PATIO DOOR W/ SIDELITES	BRONZE	35	3032	DOUBLE HUNG	COCONUT CREAM
10	7296	DIRECT GLAZE	BRONZE	36	4884	CASEMENT	BRONZE
11	4836/4896	(2)CASEMENT	BRONZE	37	7284	CASEMENT	BRONZE
12	7232/7296	(2)CASEMENT	BRONZE	38	3030	DOUBLE HUNG	COCONUT CREAM
13	3'-6" x 9'-0"	FULL LITE FRENCH DOOR	BRONZE	39	1630/3030/1630	(3)DOUBLE HUNG	BRONZE
14	2684	CASEMENT	BRONZE	40	1848	CASEMENT	BRONZE
15	4884	CASEMENT	BRONZE	41	1848	CASEMENT	BRONZE
16	8884	CASEMENT	BRONZE	42	1848/1848/1848	(3)CASEMENT	BRONZE
17	2684	CASEMENT	BRONZE	43	1848	CASEMENT	BRONZE
18	3'-6" x 9'-0"	FULL LITE FRENCH DOOR	BRONZE	44	1848	CASEMENT	BRONZE
19	3072/9672/3072	(3)CASEMENT	BRONZE	45	1630/3030/1630	(3)DOUBLE HUNG	COCONUT CREAM
20	1848	CASEMENT	BRONZE	46	3030	DOUBLE HUNG	COCONUT CREAM
21	2830	DOUBLE HUNG	BRONZE	47	1630/3030/1630	(3)DOUBLE HUNG	COCONUT CREAM
22	2830	DOUBLE HUNG	COCONUT CREAM	48	1848	CASEMENT	COCONUT CREAM
23	1848	CASEMENT	COCONUT CREAM	49	8195	CASEMENT	COCONUT CREAM
24	3664	CASEMENT	COCONUT CREAM	50	1848	CASEMENT	COCONUT CREAM
25	3'-8" x 8'-0"	3/4 LITE ENTRY DOOR	COCONUT CREAM	51	12'-0" x 8'-0"	OVERHEAD GARAGE DOOR	BLACK
26	3664	CASEMENT	COCONUT CREAM	52	9'-0" x 8'-0"	OVERHEAD GARAGE DOOR	BLACK

WINDOW AND DOOR NOTES:

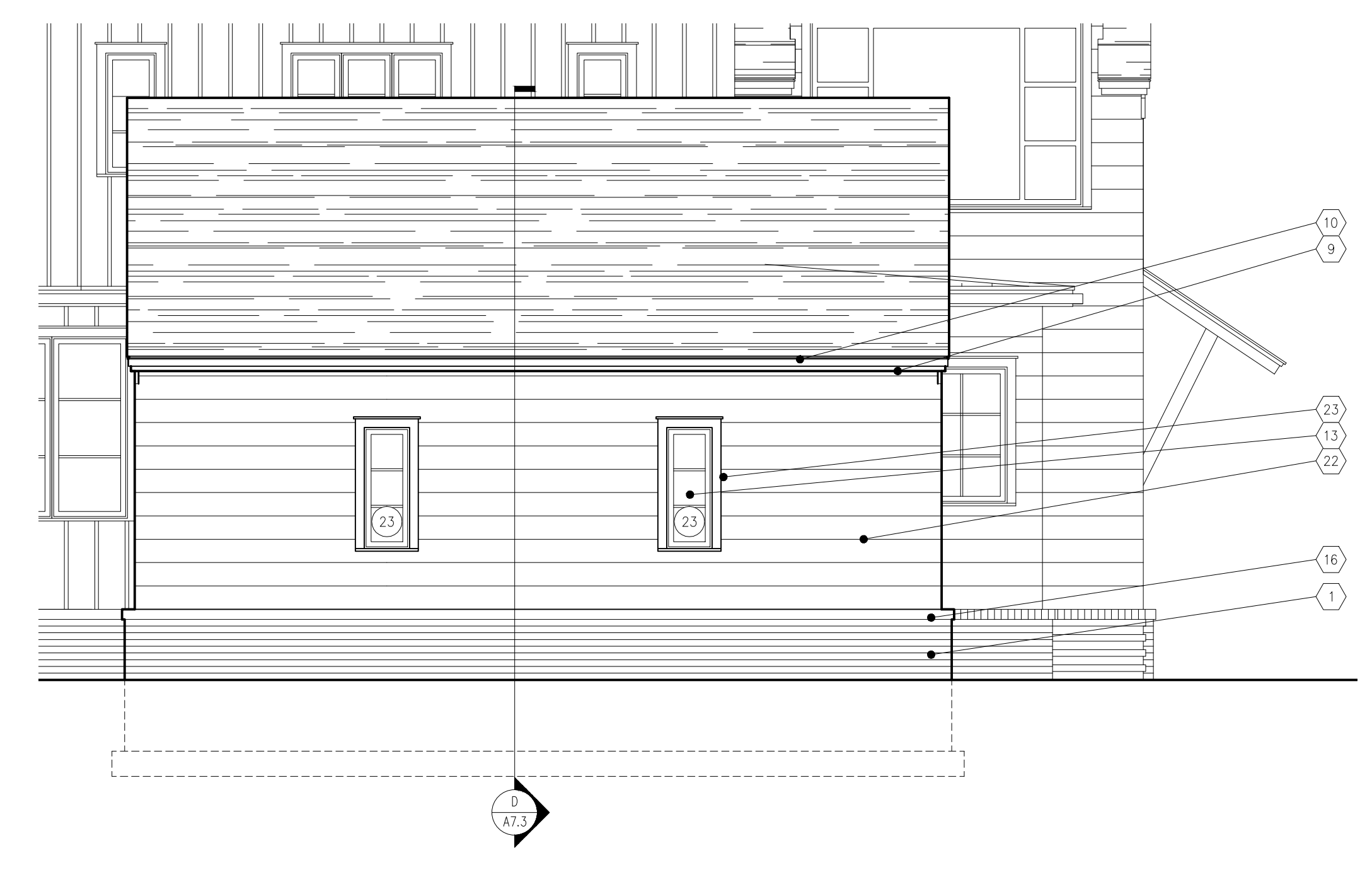
- VERIFY ALL ROUGH OPENING SIZES WITH WINDOW MANUFACTURER
- SEE ELEVATIONS FOR SAFETY GLAZING (S.G.) WINDOW LOCATIONS
- WINDOW TYPES 1, 2, AND 3 MEET OR EXCEED EMERGENCY ESCAPE AND RESCUE REQUIREMENTS FOR SLEEPING ROOMS
- ALL DOORS AND SIDE LITES TO HAVE TEMPERED SAFETY GLAZING



A PARTIAL EAST ELEVATION
 1/4" = 1'-0"



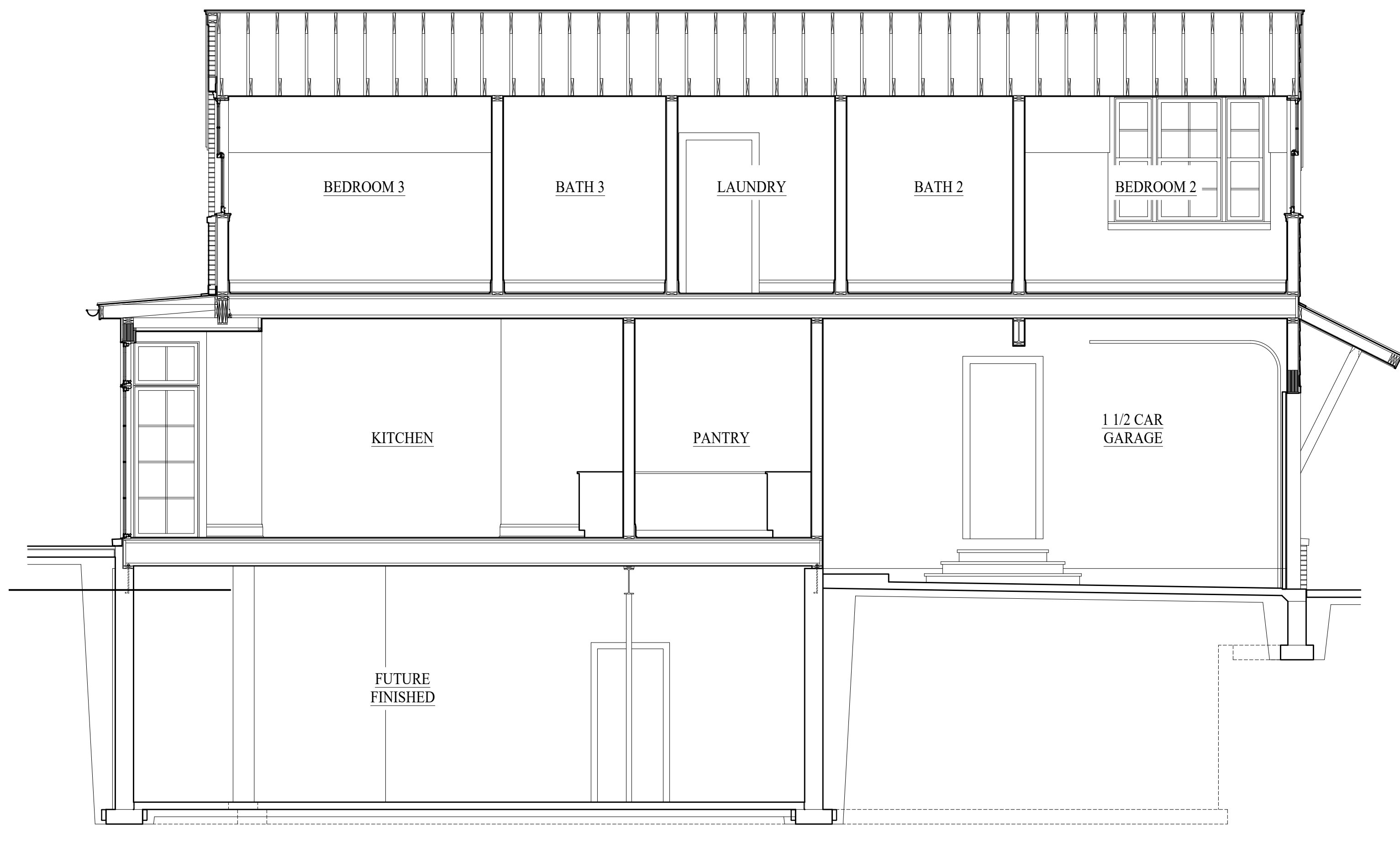
B EAST ELEVATION
 1/4" = 1'-0"



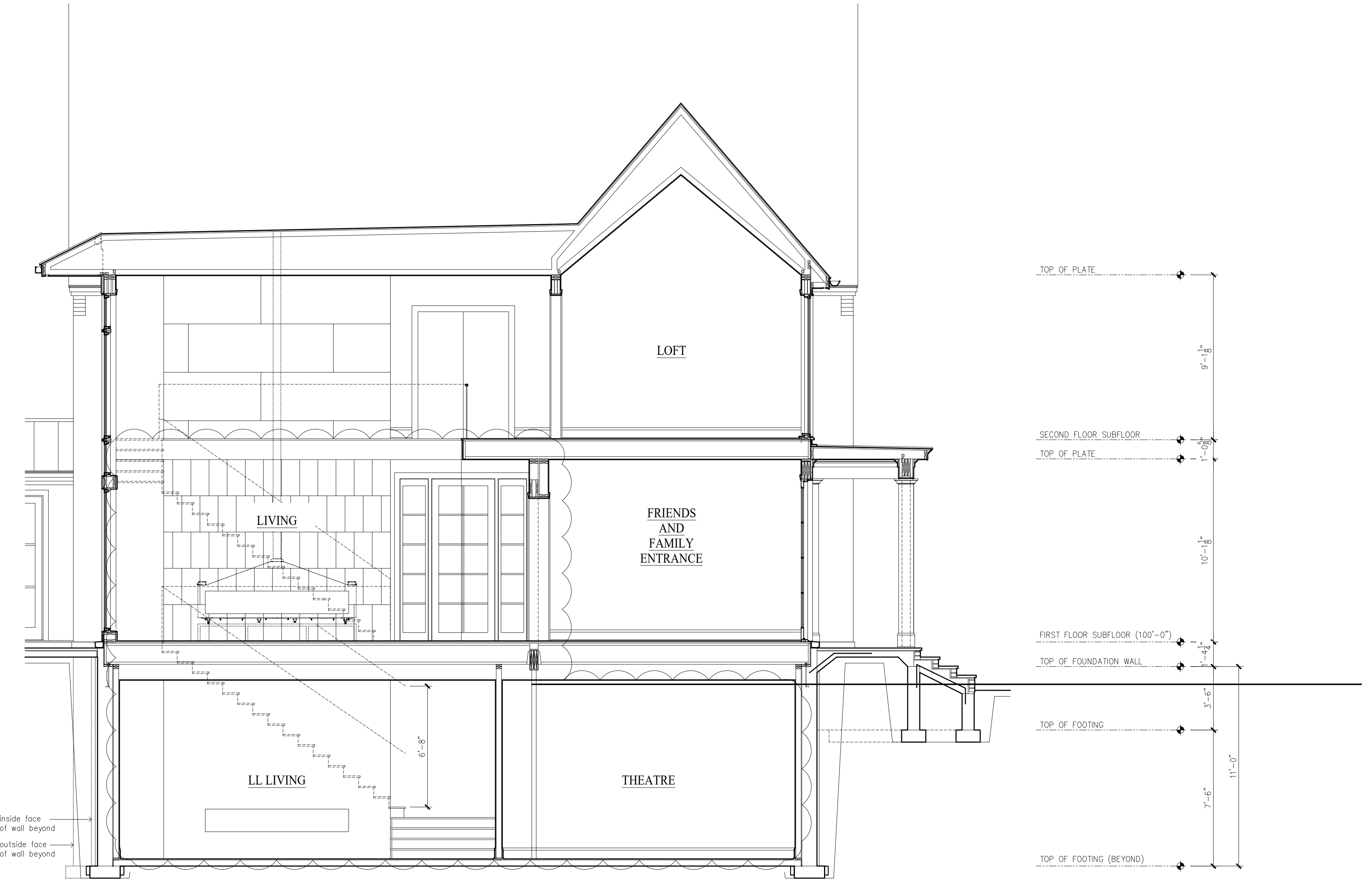
C PARTIAL EAST ELEVATION
 1/4" = 1'-0"

- Exterior Finish Coded Notes:**
- Brick veneer - painted white
 - Cut limestone lintels
 - Cut limestone sills
 - Cut limestone band
 - Wood bracket
 - Not Used
 - Stone steps and porch deck
 - Cut stone wall cap
 - Painted built up wood cornice
 - Pre-finished aluminum gutters and downspouts - charcoal color (copper option)
 - Asphalt shingles (synthetic slate option)
 - Standing seam metal roof - charcoal color
 - Aluminum clad wood windows w/ s/dl - black color
 - Painted wood shutters
 - Iron gate
 - Brick egg-lock watertable
 - Direct vent pizza oven exhaust
 - (2) 4'-0" x 7'-0" skylights
 - Board and batten siding - painted white
 - Decorative wood louver
 - Metal bracket - black painted
 - Clapboard siding - 8" exposure
 - Fiber cement trim boards - painted white
 - Flat seam copper roof
 - Clayton Modern Steel garage door - smooth finish - full lite - black color
 - Painted trim board column wrap and moldings
 - Painted wood bracket
 - Corbelled brick bracket - white painted
 - Pre-fabricated light monitor - black color
 - Custom metal screen

BULLETIN : 5



BUILDING SECTION
 A6.1 1/4" = 1'-0"



BUILDING SECTION
 B A6.1 1/4" = 1'-0"



BUILDING SECTION
 A A6.1 1/4" = 1'-0"

BULLETIN : 5