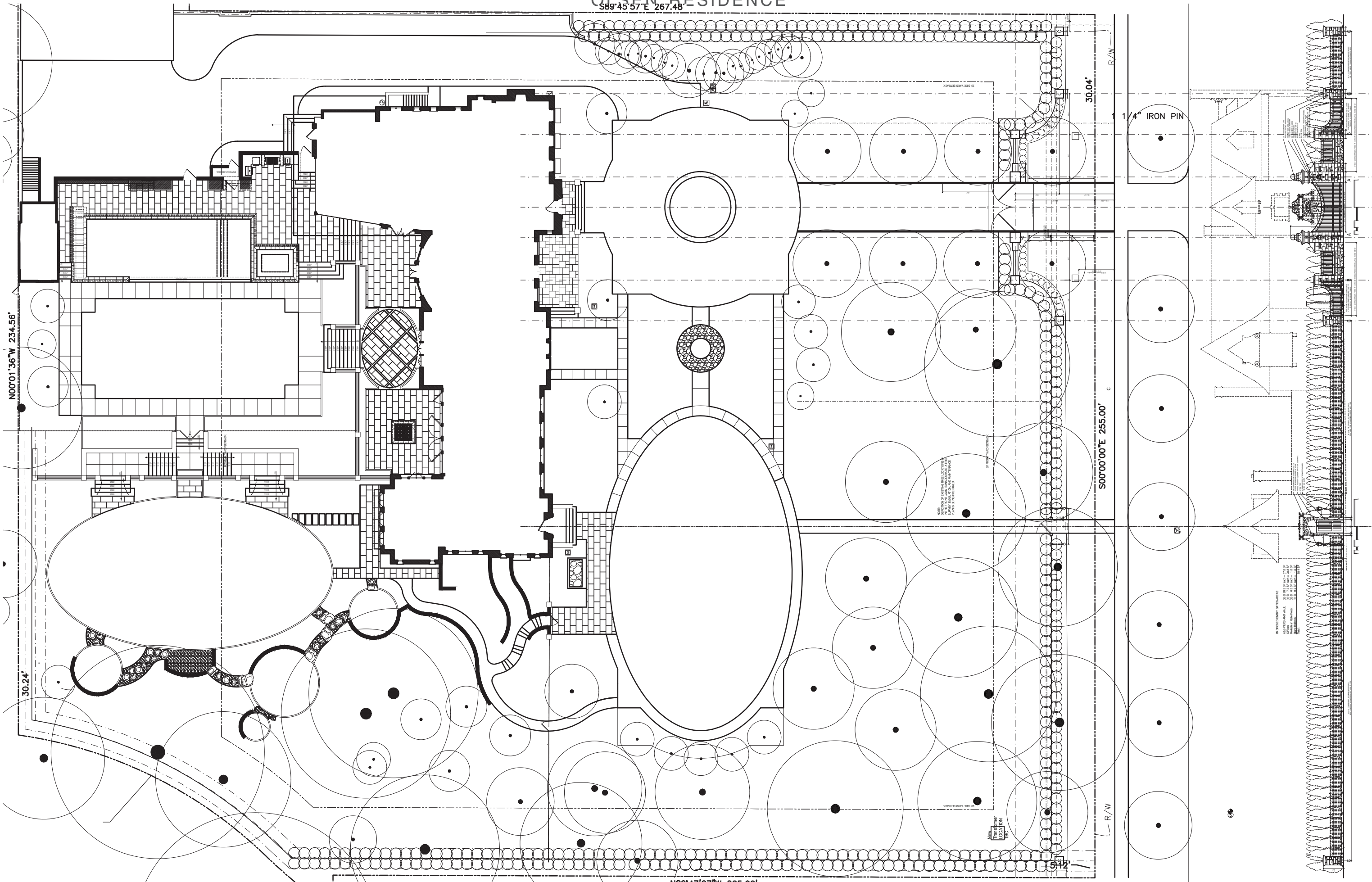


OLSEN RESIDENCE

S89°45'57"E 267.48'



SITE PLAN WITH HEDGE AND GATE ELEVATION

NR0°47'27\"/>

JONES

14 MAY 2020

OLSEN RESIDENCE



1. SANDSTONE QUOINS AND GRANITE WALL STONE



2. CURVED WALLS AND GATE



3. PIER CAP & BALL



4. DRIVE GATES

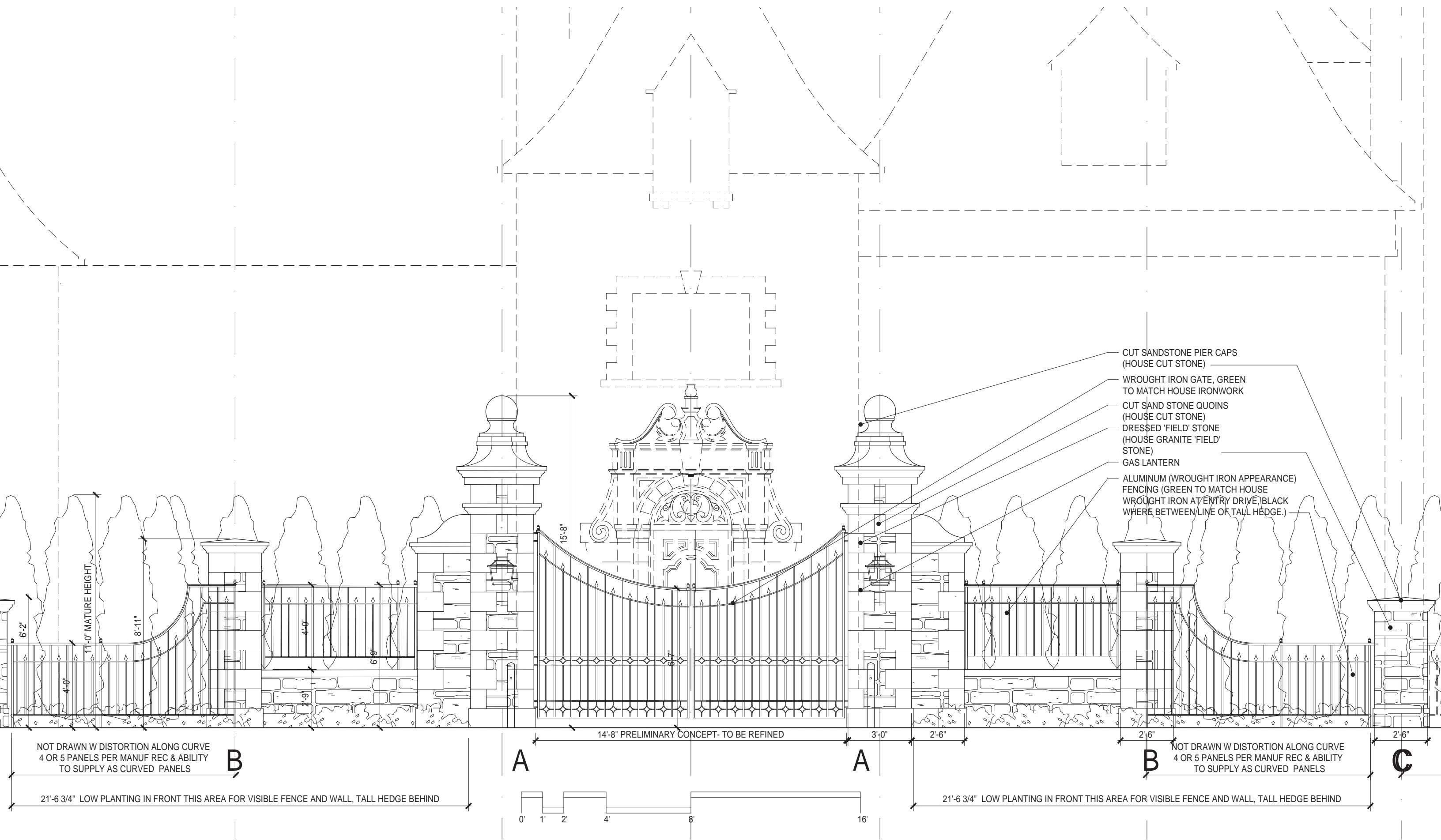


5. HEDGES



6. PEDESTRIAN GATE IN HEDGE

OLSEN RESIDENCE



- CUT SANDSTONE PIER CAPS
(HOUSE CUT STONE)
- WROUGHT IRON GATE, GREEN
TO MATCH HOUSE IRONWORK
- CUT SAND STONE QUOINS
(HOUSE CUT STONE)
- DRESSED 'FIELD' STONE
(HOUSE GRANITE 'FIELD'
STONE)
- GAS LANTERN
- ALUMINUM (WROUGHT IRON APPEARANCE)
FENCING (GREEN TO MATCH HOUSE
WROUGHT IRON AT ENTRY DRIVE, BLACK
WHERE BETWEEN/LINE OF TALL HEDGE.)

NOT DRAWN W DISTORTION ALONG CURVE
4 OR 5 PANELS PER MANUF REC & ABILITY
TO SUPPLY AS CURVED PANELS

B

A

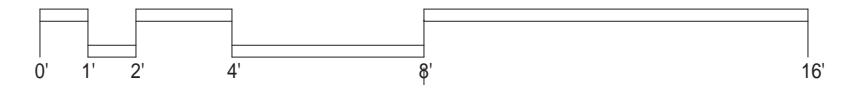
A

B

C

21'-6 3/4" LOW PLANTING IN FRONT THIS AREA FOR VISIBLE FENCE AND WALL, TALL HEDGE BEHIND

14'-8" PRELIMINARY CONCEPT- TO BE REFINED

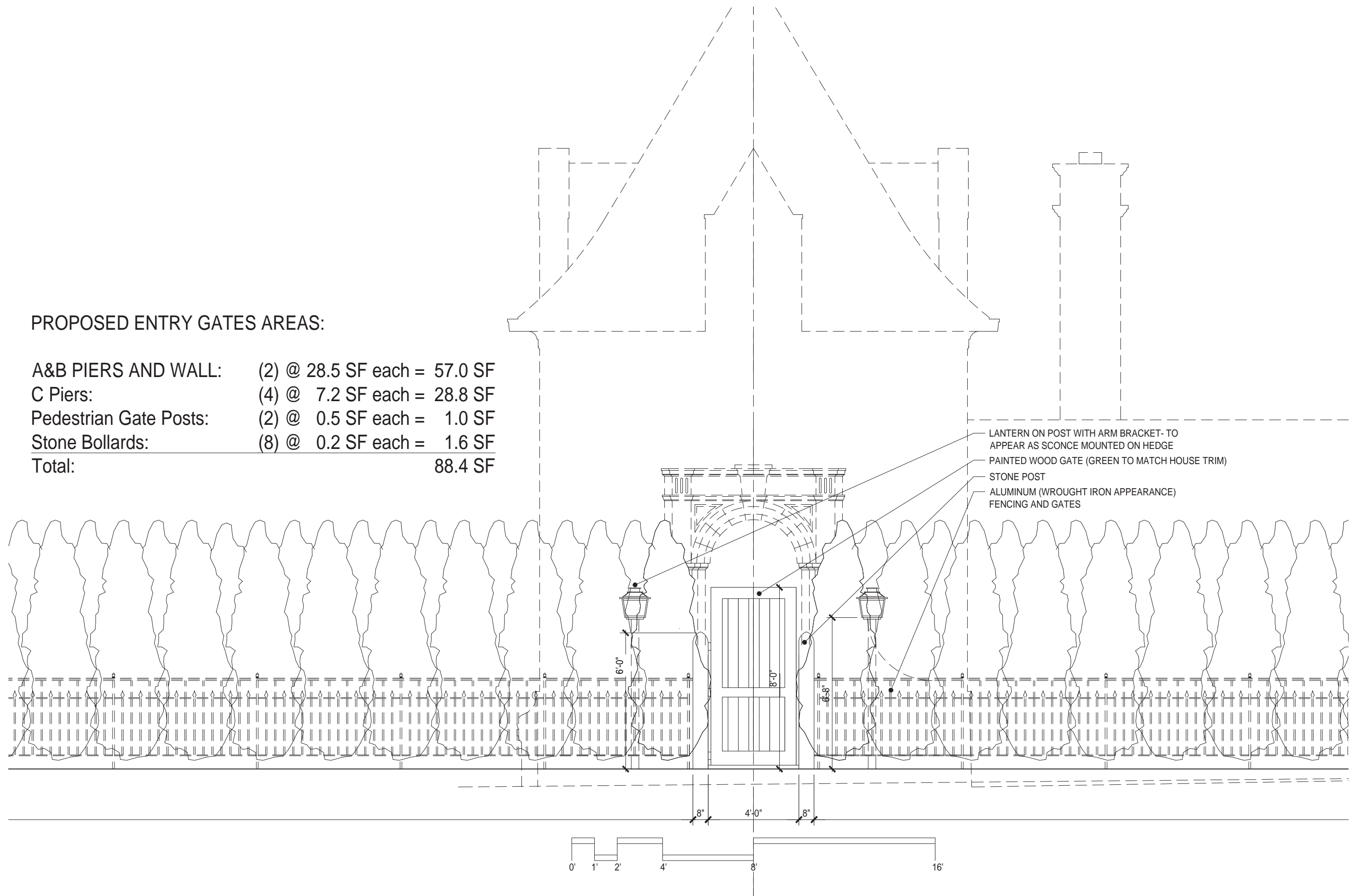


21'-6 3/4" LOW PLANTING IN FRONT THIS AREA FOR VISIBLE FENCE AND WALL, TALL HEDGE BEHIND

OLSEN RESIDENCE

PROPOSED ENTRY GATES AREAS:

A&B PIERS AND WALL:	(2) @ 28.5 SF each =	57.0 SF
C Piers:	(4) @ 7.2 SF each =	28.8 SF
Pedestrian Gate Posts:	(2) @ 0.5 SF each =	1.0 SF
Stone Bollards:	(8) @ 0.2 SF each =	1.6 SF
Total:		88.4 SF





HIDDEN CREEK
LANDSCAPING INC.

www.2thecreek.com

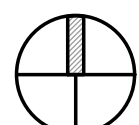
3940 SCIOTO DARBY CREEK RD

HILLIARD, OH 43026

T (614) 777-4254 F (614) 777-4254

SETS & REVISIONS:	DATE
REVISION	4-1-2021
PHASE 2 REVISION	5-13-2021

OLSEN RESIDENCE
215 N. PARKVIEW AVE
COLUMBUS, OH 43209



NORTH
SCALE: 1"=10'-0"

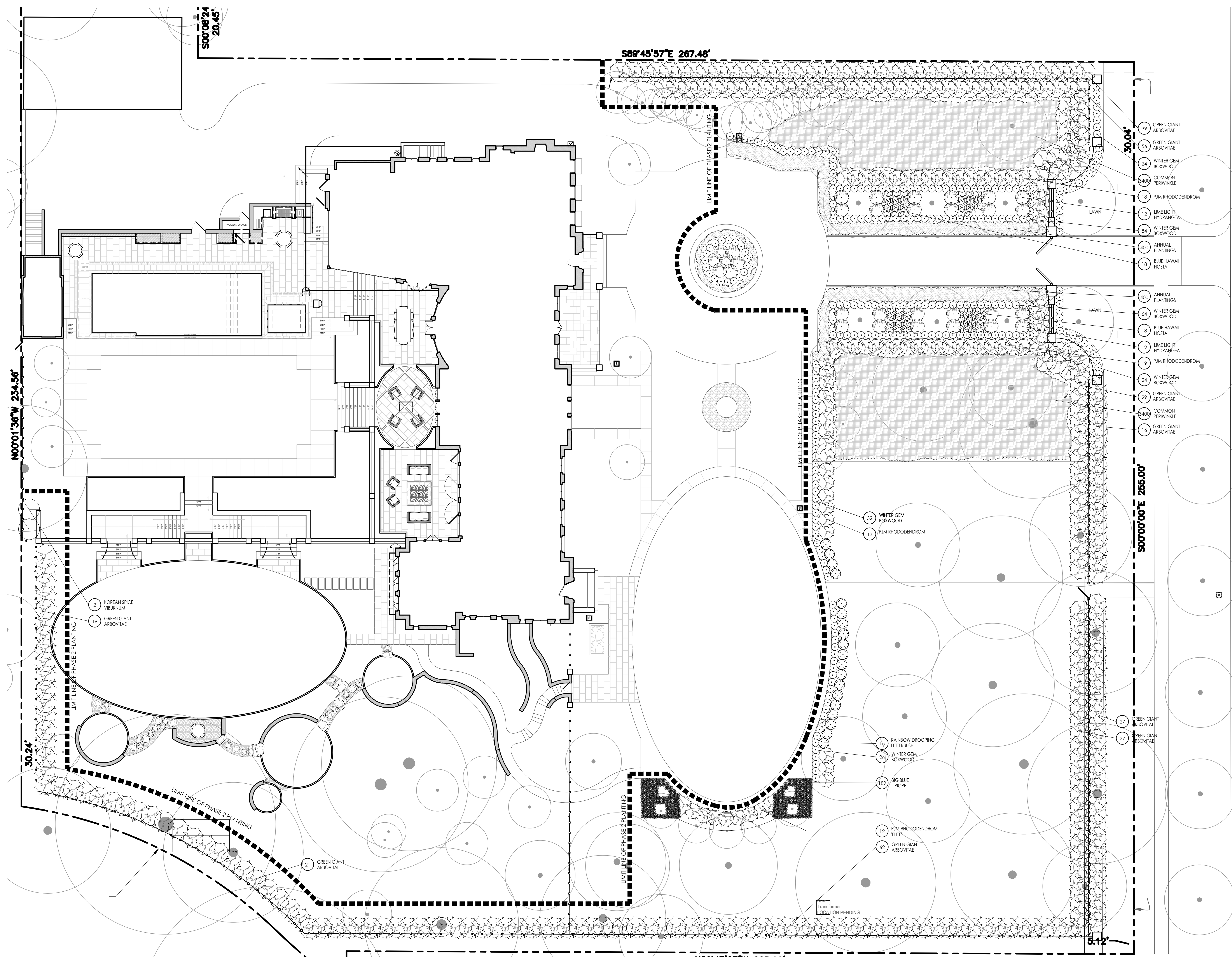


PROJECT NO: XXXX

PLANTING PLAN
- PHASE 2 SHRUBS

ALL DRAWING ARE THE ORIGINAL WORK OF HIDDEN CREEK LANDSCAPING INC. AND MAY NOT BE DISCLOSED, USED OR DUPLICATED IN ANY WAY WITHOUT THE WRITTEN CONSENT OF HIDDEN CREEK LANDSCAPING INC. HIDDEN CREEK LANDSCAPING INC. RESERVES THE RIGHT TO SUBSTITUTE PLANTS DUE TO AVAILABILITY AND QUALITY.

L-3.2



PHASE 1 PLANTING

COMMON NAME	BOTANICAL NAME	SIZE	COUNT	
TREES				
• AUTUMN BLAZE MAPLE	ACER X FREEMANII 'JEFFERS RED'	2.5'CAL	1	
• ARMSTRONG MAPLE	ACER X FREEMANII 'ARMSTRONG'	2.5'CAL	4	
• PAPERBARK MAPLE	ACER GRISEM	3'CAL	1	
• EUROPEAN HORNBEAM	Carpinus betulus 'Fastigiata'	4'CAL	2	
• EASTERN REDBUD	CERCIS CANADENSIS	2.5'CAL	1	
• WHITE PINE	PINUS STROBUS	8-10'HT	7	
• TRICOLOR BEECH	FAGUS SYLVATICA 'TRICOLOR'	2.5'CAL	3	
• CAROLINA SILVERBELL	HALESIA CAROLINA	2.5'CAL	1	
• PANICLE HYDRANGEA ON A STANDARD	HYDRANGEA PANICULATA	6'-8'HT	4	
• SWEETBAY MAGNOLIA	MAGNOLIA VIRGINIANA	8'-10'HT	6	
• LONDON PLANE TREE	PLATUS ACERFOLIA	3'CAL	1	
• SLENDER SILHOUETTE SWEETGUM	LIQUIDAMBAR STYRACIFLUA 'SLENDER'	10'HT	4	
• BALDCYPRESS	TAXODIUM DISTICHUM	8'-10'HT	4	
• PRINCETON ELM	ULMUS AMERICANA 'PRINCETON'	6'CAL	4	
• ENGLISH OAK	QUERCUS ROBUR F. FASTIGIATA	3'CAL	4	
SHRUBS				
• ARKANSAS BLUE STAR	AMONIA HUBRICTII	#5	16	
• GREEN GEM BOXWOOD	BUXUS X 'GREEN GEM'	#5	89	
• WINTER GEM BOXWOOD	BUXUS MICROPHYLLA JAPONICA 'WINTER GEM'	5 GAL	212	
• SUGAR SHACK BUTON BUSH	CEPHALANTHUS OCCIDENTALIS 'SUGAR SHACK'	#5	4	
• SWEET PEPPERBUSH	CLETHRA ALNIFOLIA	#5	10	
• BUSH HONEYSUCKLE	DIERVILLA LONICERA	#5	5	
• ANNABELLE HYDRANGEA	HYDRANGEA ARBORESCENCE 'ANNABELLE'	#5	4	
• LIME LIGHT HYDRANGEA	HYDRANGEA PANICULATA 'LIME LIGHT'	#5	17	
• REBLOOMING MOUNTAIN HYDRANGEA	HYDRANGEA SERRATA 'TUFF STUFF'	#5	28	
• SNOW QUEEN OAKLEAF HYDRANGEA	HYDRANGEA QUERCIFOLIA 'SNOW QUEEN'	#5	12	
• LITTLE HENRY SWEETSPIRE	ITEA VIRGINICA 'LITTLE HENRY'			
• RAINBOW DROOPING FETTERBUSH	LEUCOTHOE FONTANESIANA 'RAINBOW'	#5	23	
• SIBERIAN CYPRESS	MICROBIOTA DECUSSATA	#5	5	
• CORAL CHARM PEONY	PEONY 'CORAL CHARM'	#5	31	
• ELITE PJM RHODODENDRON	RHODODENDRON PJM 'ELITE'	#5	4	
• YUKI CHERRY BLOSSOM DEUTZIA	DEUTZIA 'YUKI CHERRY'	#5	18	
• DWARF KOREAN LILAC	SYRINGEA MEYERI 'PALIBIN'	#5	8	
• KOREAN SPICE VIBURNUM	VIBURNUM CARLESII	#5	22	
• SPICE BABY VIBURNUM	VIBURNUM CARLESII 'SPICE BABY'	#5	33	
• AUNT DEE WISTERIA	WISTERIA FRUTESCENS	#5	5	
• LEATHER LEAF VIBURNUM	VIBURNUM RHYTIDOPHYLLUM	#5	11	
PERENNIALS & GROUNDCOVERS				
• ASTILBE	ASTILBE FEDERSEE	#1	51	
• ASTILBE VISION IN WHITE	ASTILBE CHINENSIS 'VISION IN WHITE'	#1	51	
• CHRISTMAS FERN	POLYSTICHUM AROSTICHOIDES	#1	51	
• JAPANESE PACHYSANDRA	PACHYSANDRA TERMINALIS	2.25PP/FLAT	686	
• SWEET WOODRUFF	GALIUM ODORATUM	2.25PP/FLAT	157	
• BIG BLUE LILYTURF	LIRIOPE 'BIG BLUE'	#1	751	
• VARIEGATED LILYTURF	LIRIOPE MUSCARI 'VARIEGATA'	#1	225	
• CREEPING LILYTURF	LIRIOPE SPICATA	#1	293	
• WALKERS LOW CATMINT	NEPETA FAASSENII 'WALKERS LOW'	#1	230	
• COMMON PERIWINKLE	VINCA MINOR	2..25PP	484	
CAREX MATRIX			260	
BROME SEDGE	CAREX BROMOIDES	2..25PP		
FESCUE SEDGE	CAREX FESTUCACEA	2..25PP		
PENNSYLVANIA SEDGE	CAREX PENNSYLVANICA	2..25PP		
SHADE MATRIX			922	
BROME SEDGE	CAREX BROMOIDES	2..25PP		
FESCUE SEDGE	CAREX FESTUCACEA	2..25PP		
PENNSYLVANIA SEDGE	CAREX PENNSYLVANICA	2..25PP		
LEATHERWOOD FERN	DRYOPTERIS MARGINALIS	#1		
PERENNIAL MATRIX			283	
TICKSEED	COREOPSIS VERTICILLATA 'GRANDIFLORA'	#1		
JOE PYE WEED	EUPATORIUM DUBLUM 'BABY JOE'	#1		
CUSHION SPURGE	EUPHORBIA POLYCHROMA	#1		
CATMINT	NEPETA SUBSESSILLIS	#1		
MEADOW SAGE	SALVIA NEMOROSA 'WESUWE'	#1		
AUTUMN MOOR GRASS	SESIERIA AUTUMNALIS	#1		
FROST GRASS	SPODIOPOGON SIBIRICUS	#1		
BETONY	STACHYS OFFICINALIS 'HUMMELO'	#1		
ANNUALS/BULBS				
MIXED ANNUALS		2..25PP		
507				

PHASE 2 PLANTING

COMMON NAME	BOTANICAL NAME	SIZE	COUNT	
SHRUBS				
• WINTER GEM BOXWOOD	BUXUS MICROPHYLLA JAPONICA 'WINTER GEM'	5 GAL	273	
• LIME LIGHT HYDRANGEA	HYDRANGEA PANICULATA 'LIME LIGHT'	#5	31	
• RAINBOW DROOPING FETTERBUSH	LEUCOTHOE FONTANESIANA 'RAINBOW'	#5	19	
• ELITE PJM RHODODENDRON	RHODODENDRON PJM 'ELITE'	#5	62	
• KOREAN SPICE VIBURNUM	VIBURNUM CARLESII	#5	2	
• SPICE BABY VIBURNUM	VIBURNUM CARLESII 'SPICE BABY'	#5		
• GREEN GIANT ARBOVITAE	THUJA 'GREEN GIANT'	6-7'	296	
PERENNIALS				
• COMMON PERIWINKLE	VINCA MINOR	2.25PP	6800	
• BLUE HAWAII HOSTA	HOSTA 'BLUE HAWAII'	#1	36	
• BIG BLUE LILYTURF	LIRIOPE 'BIG BLUE'	#1	189	
ANNUALS				
MIXED ANNUALS		2..25PP	950	

LANDSCAPE NOTES

1. ALL PLANTS SUBJECT TO AVAILABILITY.
2. HCLI RESERVES THE RIGHT TO SUBSTITUTE UNAVAILABLE PLANT MATERIAL BASED ON SIMILAR SIZE, SHAPE, COLOR, & TEXTURE IN ORDER TO ACHIEVE THE SAME DESIGN INTENT UNLESS SPECIFIED OTHERWISE BY CLIENT.



HIDDEN CREEK
LANDSCAPING INC.

www.2thecreek.com

3940 SCIOTO DARBY CREEK RD.

HILLIARD, OH 43026

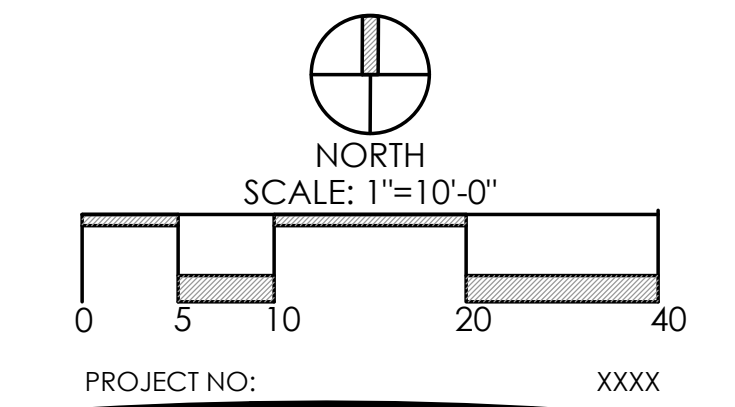
T (614) 777-4254 F (614) 777-4255

SETS & REVISIONS:	DATE:
REVISION	4-1-2020
PHASE 2 REVISION	5-13-2020

OLSEN RESIDENCE

215 N. PARKVIEW AVE

COLUMBUS, OH 43209

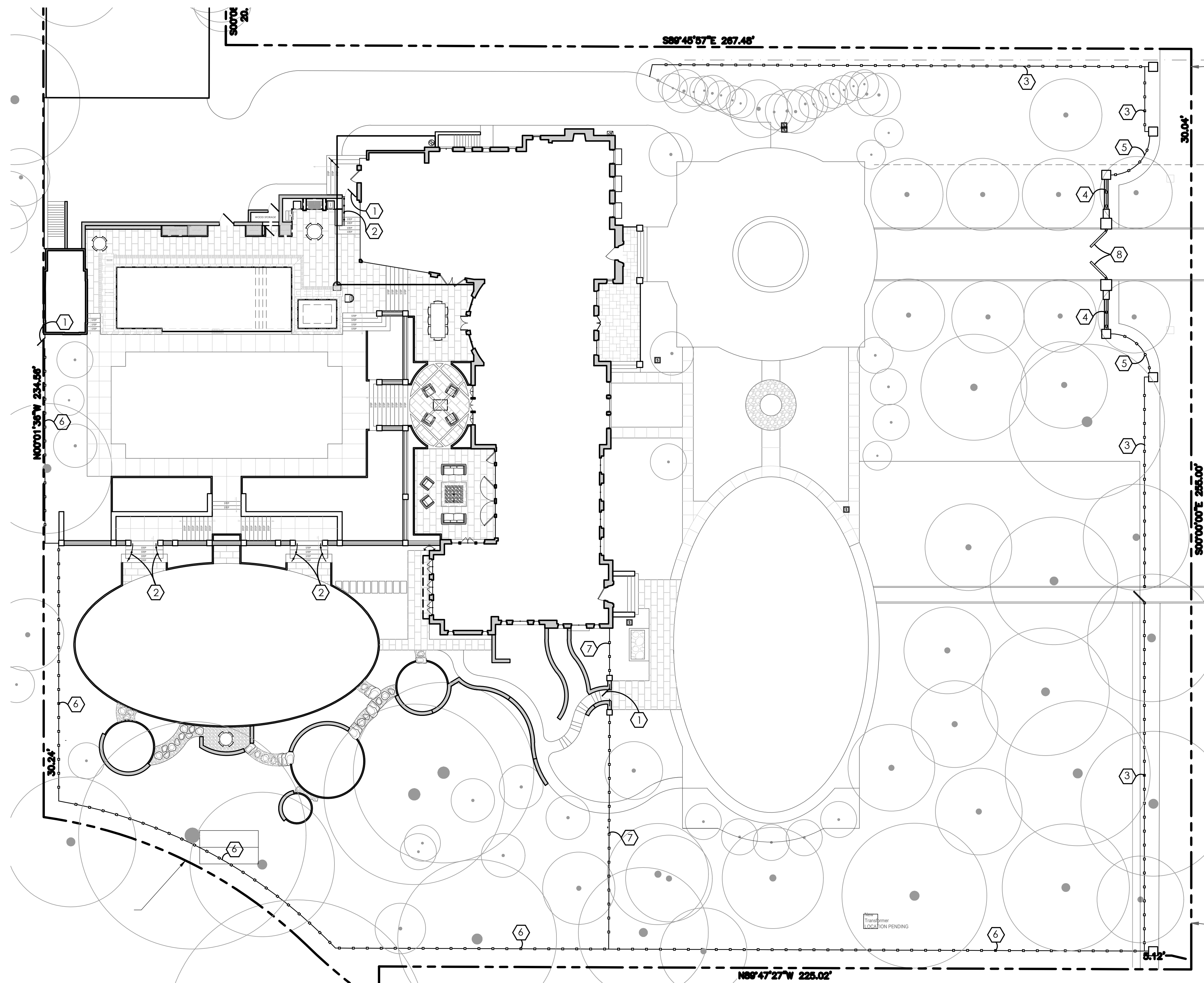


PLANTING NOTES

ALL DRAWING ARE THE ORIGINAL WORK OF HIDDEN CREEK LANDSCAPING INC. AND MAY NOT BE DISCLOSED, USED OR DUPLICATED IN ANY WAY WITHOUT THE WRITERS CONSENT OF HIDDEN CREEK LANDSCAPING INC. HIDDEN CREEK LANDSCAPING INC. RESERVES THE RIGHT TO SUBSTITUTE PLANTS DUE TO AVAILABILITY AND QUALITY.

L-4

CONSTRUCTION ISSUE



CONSTRUCTION NOTES:

- ① (3)36"W ALUMINUM GATE
 - 1233 3-RAIL POOL FLAT TOP ALTERNATING SPEAR
 - SELF CLOSING/SELF LATCHING
 - PAINTED GREEN
- ② 36"H ALUMINUM RAILING
 - CURVED
 - PAINTED BLACK
- ③ @ 55"H ALUMINUM POOL FENCE
 - 1233 3-RAIL POOL FLAT TOP ALTERNATING SPEAR
 - STRAIGHT
 - MOUNTED AT GROUND LEVEL
 - PAINTED GREEN
- ④ 18L' @ 55"H ALUMINUM POOL FENCE
 - 1233 3-RAIL POOL FLAT TOP ALTERNATING SPEAR
 - STRAIGHT
 - MOUNTED ON TOP OF MASONRY WALL
 - PAINTED GREEN
- ⑤ 34L' @ 55"H ALUMINUM POOL FENCE
 - 1233 3-RAIL POOL FLAT TOP ALTERNATING SPEAR
 - CURVED
 - MOUNTED AT GROUND LEVEL
 - PAINTED GREEN
- ⑥ @ 55"H ALUMINUM POOL FENCE
 - 1233 3-RAIL POOL FLAT TOP ALTERNATING SPEAR
 - STRAIGHT
 - MOUNTED AT GROUND LEVEL
 - PAINTED BLACK
- ⑦ 83L' @ 55"H ALUMINUM POOL FENCE
 - 1233 3-RAIL POOL FLAT TOP ALTERNATING SPEAR
 - STRAIGHT
 - MOUNTED AT GROUND LEVEL
 - PAINTED GREEN
- ⑧ ALUMINUM ENTRY DRIVE GATE (SEE DETAILS)
 - STRAIGHT
 - MOUNTED AT GROUND LEVEL WITH INCLUDED STEEL POSTS
 - OPEN/CLOSE MECHANISM
 - CALL BOX W/ POST

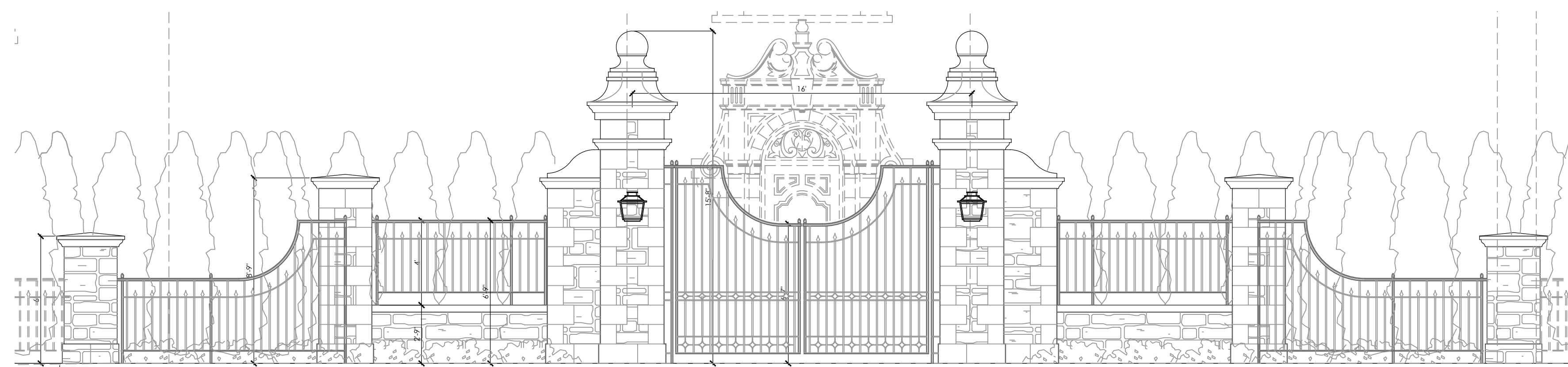
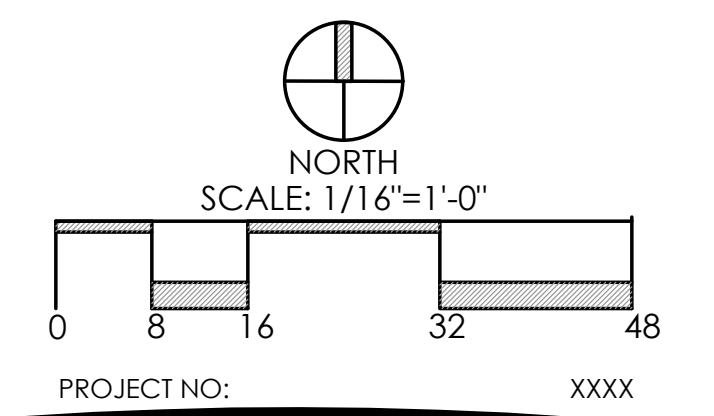


HIDDEN CREEK
LANDSCAPING INC.

www.2thecreek.com
3940 SCIOTO DARBY CREEK RD.
HILLIARD, OH 43026
T (614) 777-4254 F (614) 777-4255

SETS & REVISIONS:	DATE:
POOL FENCE	4-1-2020
PHASE 2 REVISION	5-13-2020

OLSEN RESIDENCE
215 N. PARKVIEW AVE
COLUMBUS, OH 43209



① FRONT PROPERTY FENCE, COLUMN, ENTRY DRIVE GATE ELEVATION (BY OTHERS)

SCALE: 1/2" = 1'-0"

3-Rail Pool



ALUMINUM COLORS

DSI Aluminum Products are offered in 12 standard AAMA 2604 colors. Custom colors and AAMA 2605 colors are available by special order. Colors shown are a close representation of the true color. Please consult actual samples for accurate powder coating colors.



② POOL CODE COMPLIANT METAL FENCE DETAIL

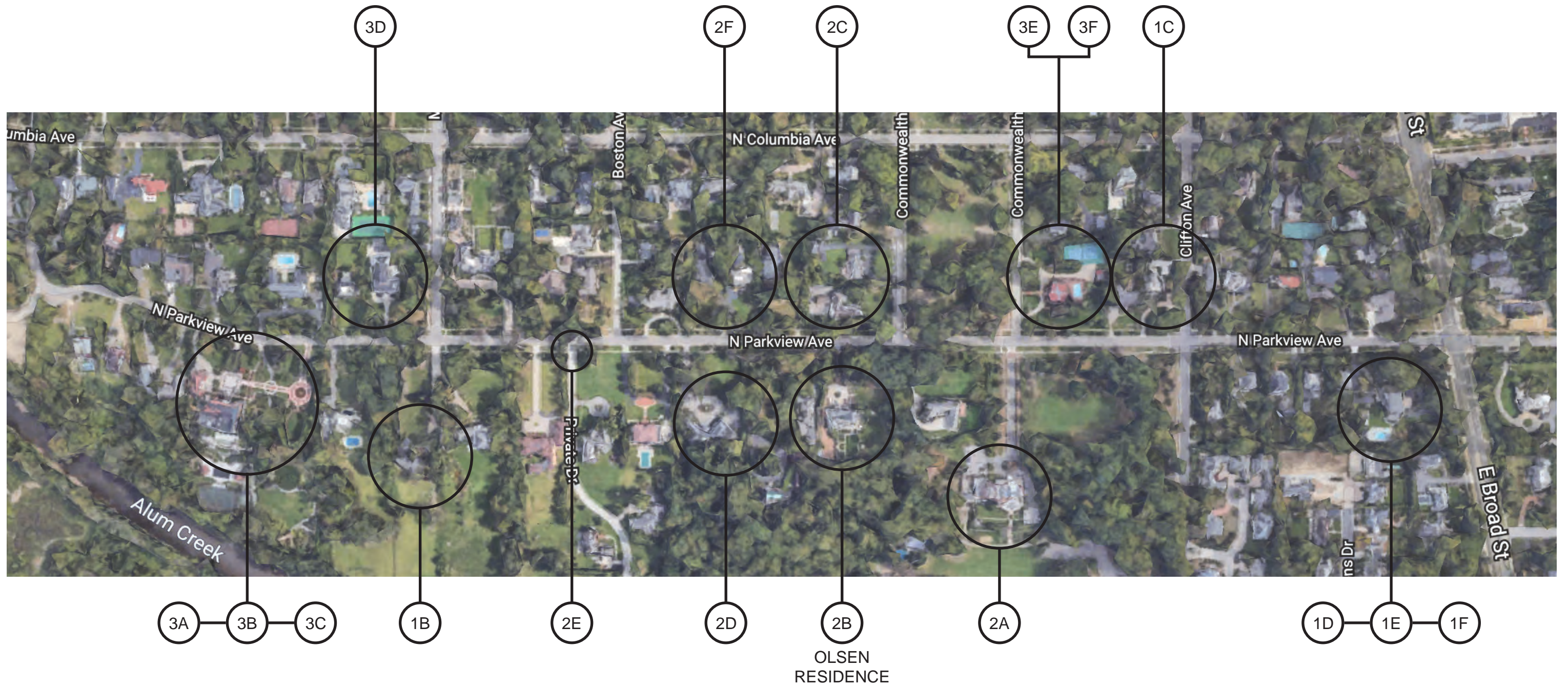
POOL FENCE PLAN

ALL DRAWING ARE THE ORIGINAL WORK OF HIDDEN CREEK LANDSCAPING INC. AND MAY NOT BE DISCLOSED, USED OR DUPLICATED IN ANY WAY WITHOUT THE WRITTEN CONSENT OF HIDDEN CREEK LANDSCAPING INC. HIDDEN CREEK LANDSCAPING INC. RESERVES THE RIGHT TO SUBSTITUTE PLANTS DUE TO AVAILABILITY AND QUALITY.

L-8

CONSTRUCTION ISSUE

OLSEN RESIDENCE



OLSEN RESIDENCE



1A.



1B. 385 N PARKVIEW AVENUE



1C. 112 N PARKVIEW AVENUE



1D. 17 N PARKVIEW AVENUE



1E. 17 N PARKVIEW AVENUE



1F. 17 N PARKVIEW AVENUE

OLSEN RESIDENCE



2A. 165 N PARKVIEW AVENUE



2B. 215 N PARKVIEW AVENUE - OLSEN RESIDENCE EXISTING PIERS



2C. 218 N PARKVIEW AVENUE



2D. 267 N PARKVIEW AVENUE



2E. 305 N PARKVIEW AVENUE



2F. 358 N PARKVIEW AVENUE

OLSEN RESIDENCE



3A. 445 N PARKVIEW AVENUE



3B. 445 N PARKVIEW AVENUE



3C. 445 N PARVIEW AVENUE



3D. 386 N PARKVIEW AVENUE



3E. 140 N PARKVIEW



3F. 140 N PARKVIEW AVENUE