







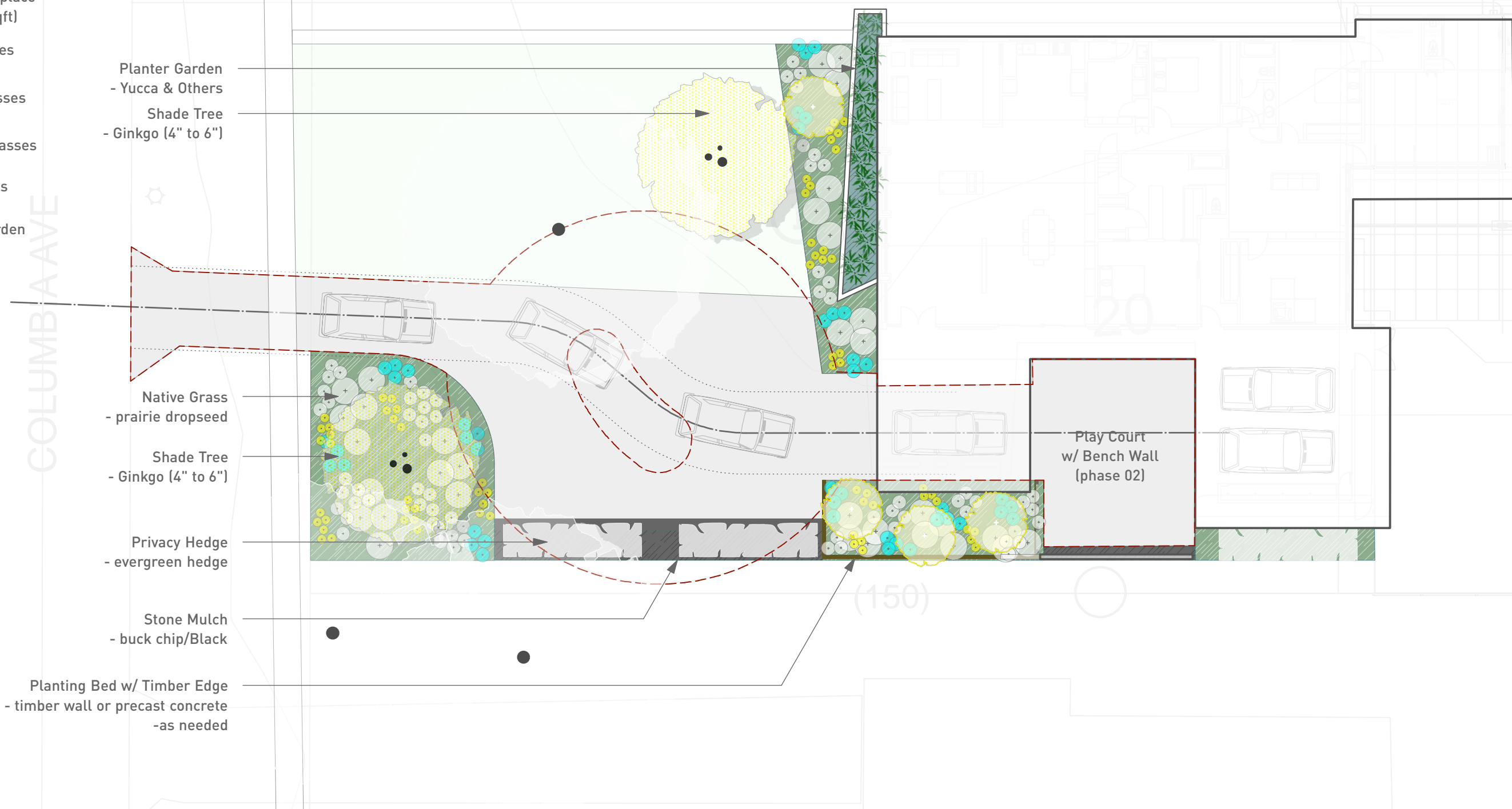


# Landscape Legend

-  Native Grass Beds (approx. 1800 sqft)
-  Buck Chip Beds (approx. 500 sqft)
-  Lawn Repair/Replace (approx. 2500 sqft)
-  Lg Native Grasses (see plant list)
-  Med Native Grasses (see plant list)
-  Small Native Grasses (see plant list)
-  Small Perennials (see plant list)
-  Ornamental Garden (see plant list)

- Planter Garden - Yucca & Others
- Shade Tree - Ginkgo (4" to 6")
- Native Grass - prairie dropseed
- Shade Tree - Ginkgo (4" to 6")
- Privacy Hedge - evergreen hedge
- Stone Mulch - buck chip/Black
- Planting Bed w/ Timber Edge - timber wall or precast concrete -as needed

COLUMBIA AVE



## SITE IMAGES (BEFORE & AFTER)

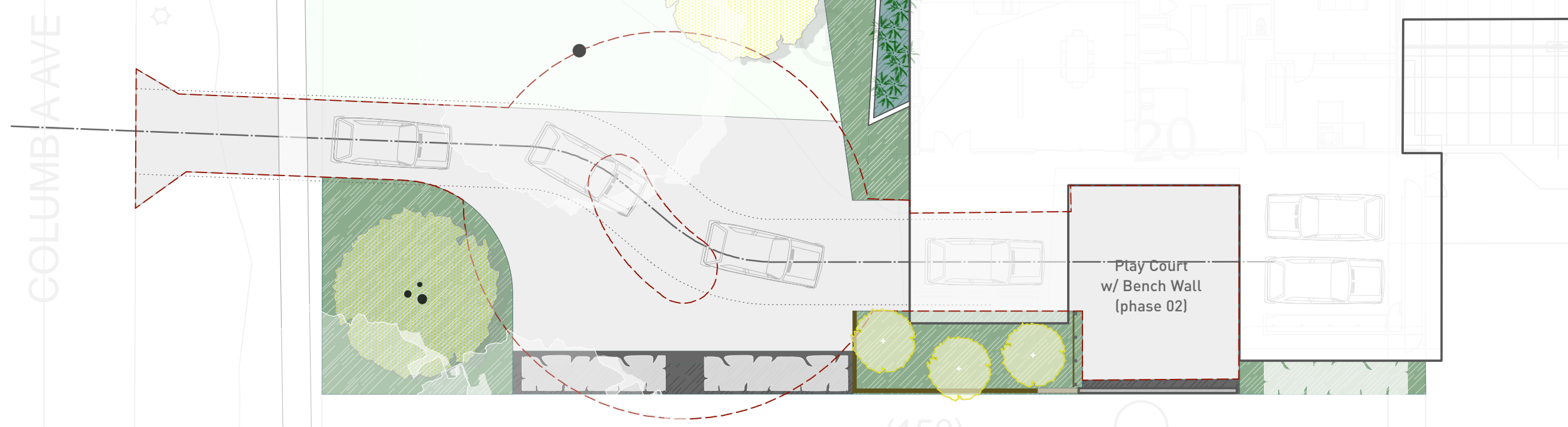
Pre-Existing Site Photos (Top Row): Left - Circular Drive Approach, Center - Curved edge of drive, Right - Shrubs in circular drive center.



Site Photos (Bottom Row): Left - Reduced paving to increase lawn area, Center - As-built Approach Drive, Right - Increased screening to/from neighboring properties by having shrubs at edge.

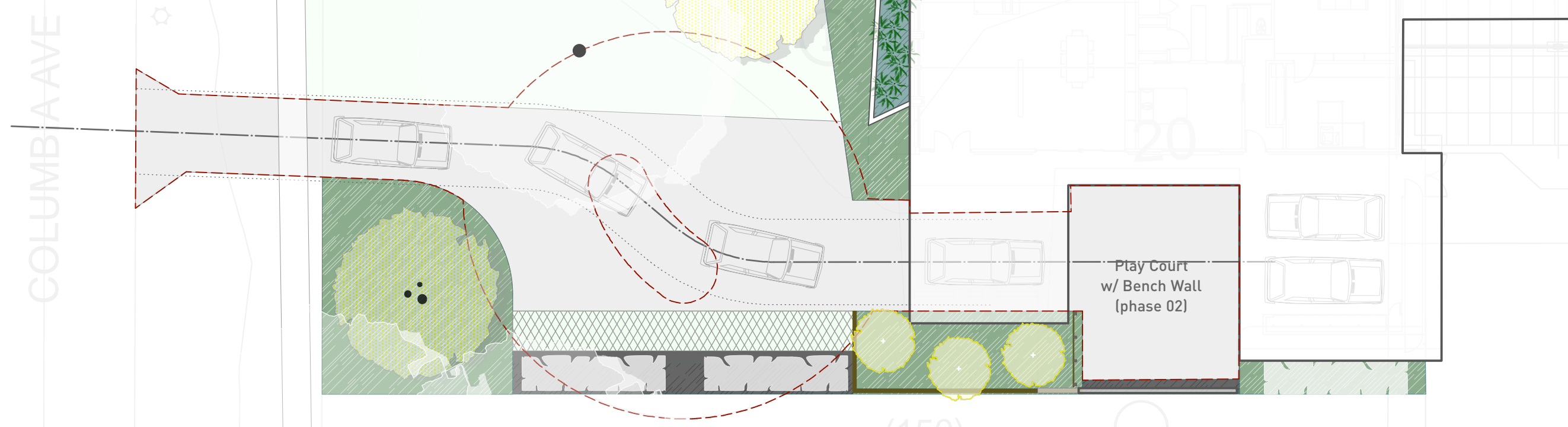
# Legend - Entry Diagram

- Original Drive Area (approx. 3850 sqft)  
(54'  $\varnothing$  circular drive existing)
- Proposed Drive Area (approx. 3025 sqft)  
(24' width at offset of drive centers)
- Proposed Drive Apron (approx. 270 sqft)  
(24' width at offset of drive centers)
- Functional Drive Width  
(Existing Drive Width w/ Offset Alignment)
- Drive Centerline  
(Offset between curb cut & Carport)

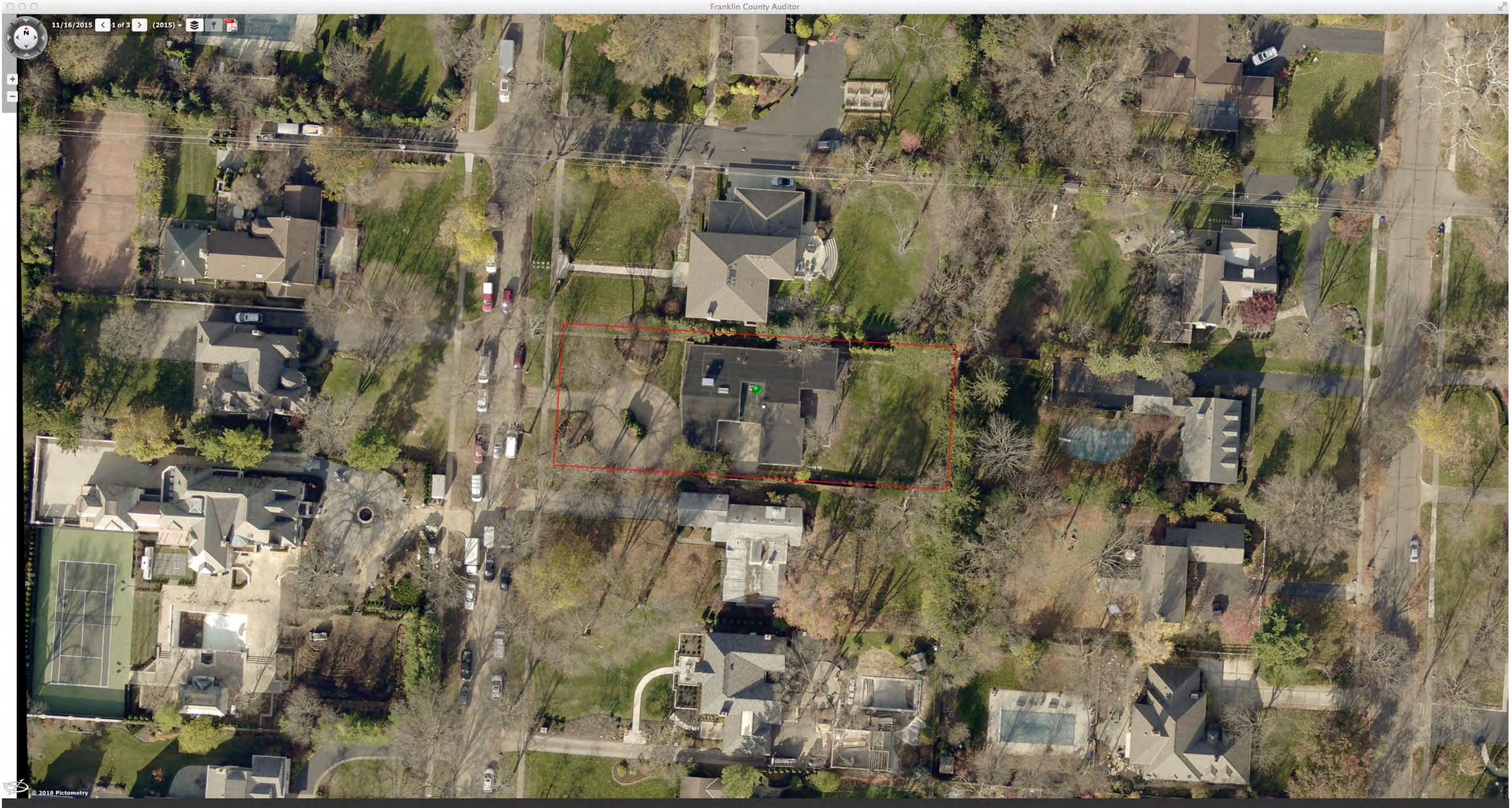


# Legend - Entry Diagram

- Original Drive Area (approx. 3850 sqft)  
(54'  $\varnothing$  circular drive existing)
- Proposed Drive Area (approx. 3025 sqft)  
(24' width at offset of drive centers)
- Proposed Drive Apron (approx. 270 sqft)  
(24' width at offset of drive centers)
- Functional Drive Width  
(Existing Drive Width w/ Offset Alignment)
- Drive Centerline  
(Offset between curb cut & Carport)







11/16/2015 1 of 3 (2015)

© 2018 Pictometry

**IMPLEMENT**  
DESIGN / GRAPHICS / LANDSCAPE

IMPLEMENT  
1119 Mt. Pleasant Ave.  
Columbus, OH 43201

implement-studio.net  
614-558-6742

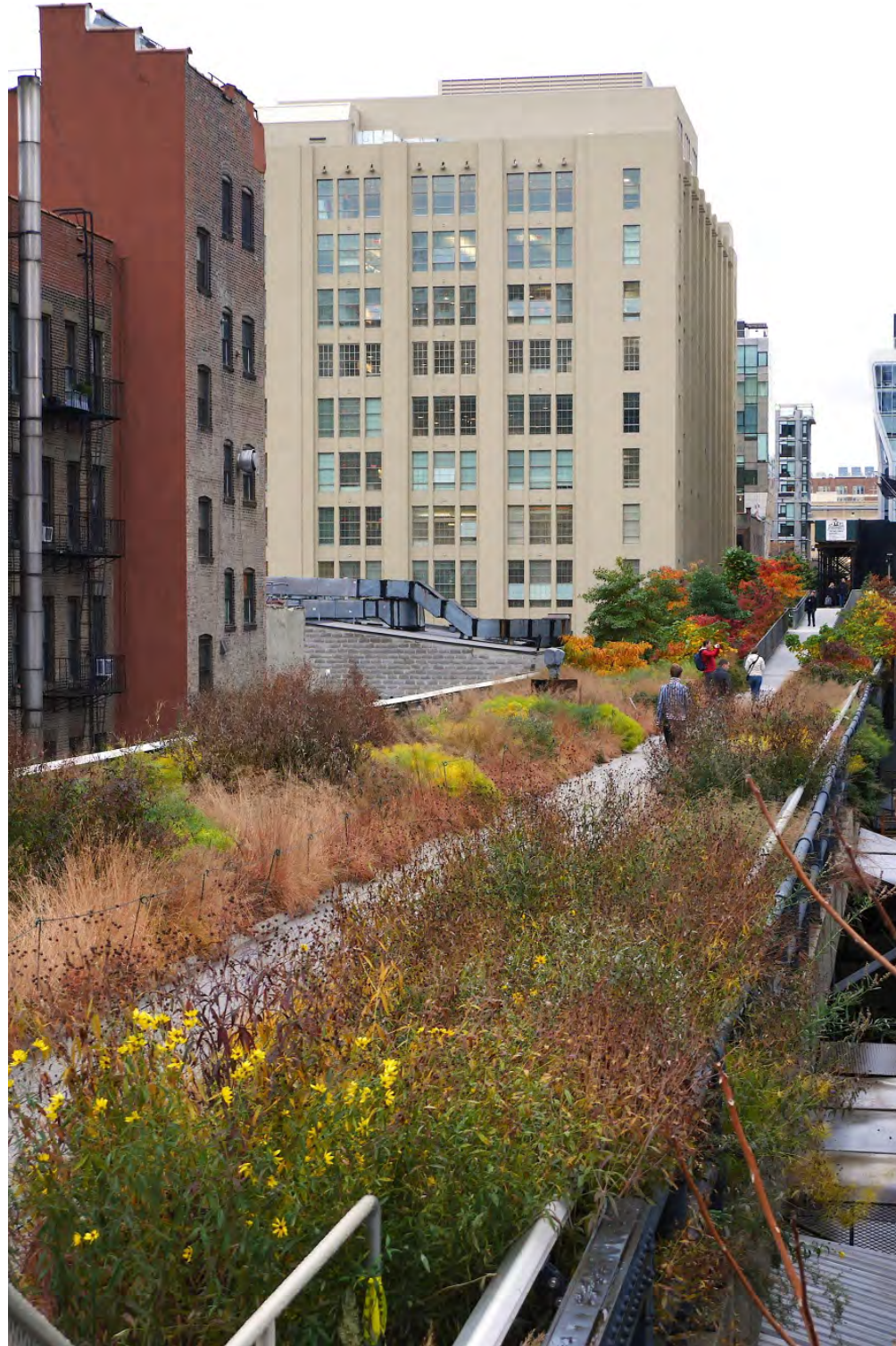
Jason Kentner, RLA  
Design Principal

**400 N Columbia - 2015 Image**

SD Design Meeting  
05.03.2018

## DESIGN PRECEDENT

The High Line (2009 by Field Operations) & Miller House & Garden (1957 by Dan Kiley): These two projects provide much of the conceptual motivation for this project. Spatially, the project is tied to mid-century landscape while the aesthetics are more contemporary in nature.



## PLANTING PALETTE & CONCEPTS

**Canopy Trees, Hedges & Lawn:** These elements provide the scale and structure for the landscape. Since existing mature trees will only decline a few new trees are proposed. Species include Dawn Redwood and Ginkgo. Ginkgo is extremely colorful and sculptural while the Redwood is soft in texture & detail.



**Shrubs & Ornamental Evergreens:** The design uses shrubs and ornamental evergreens in larger planting areas in groups allowing for collective color and texture to be focus of the garden. There are a wide variety of options but selected species suggest Mid-Century California-like style. Dwarf Bamboo, Yucca, and Witch Hazel.



**Native Grasses:** The grasses provide seasonal color and texture to the landscape and help structure the site by subdividing the ground and establishing/reinforcing site geometry. Species include Prairie Dropseed and Switch Grass.





## PLANTING PALETTE & CONCEPTS

**Metropolitan Meadow Mix:** Native grasses, perennials, and shrubs offer complimentary colors with range of textures similar to the precedent example. The meadow is defined by lower textures provided by prairie dropseed and dwarf fountain grass, mid-level grasses and perennial flowers provide show of seasonal color while accent plants draw specific attention.

