

All drawings and written material appearing herein constitute the original and unpublished work of the architect and the same may not be duplicated, used, or disclosed without the written consent of the architect.

BEXLEY POLICE FACILITY
559 NORTH CASSINGHAM ROAD
BEXLEY, OHIO 43209

08/05/2008

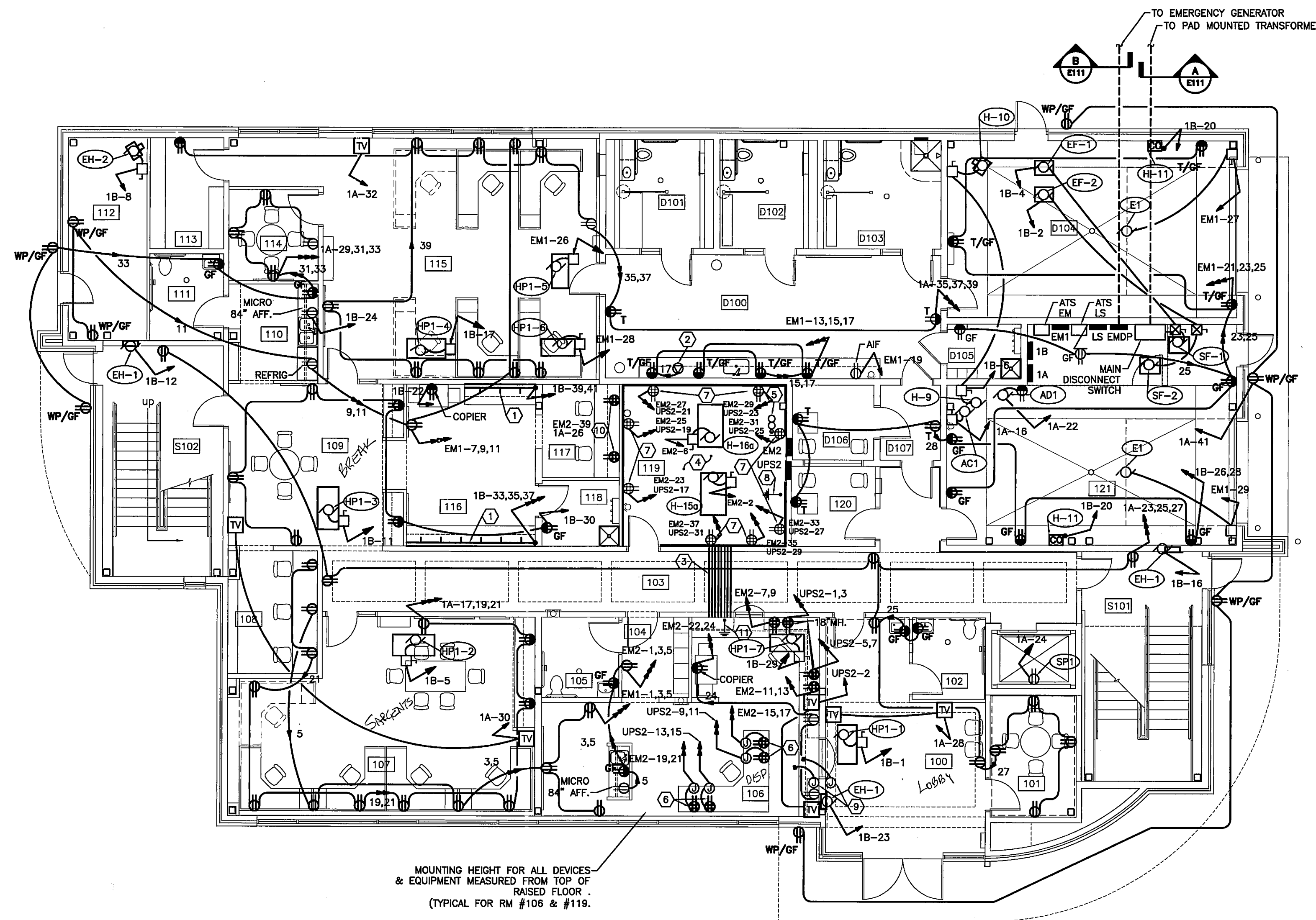
BIDDING DOCUMENTS
CONSTRUCTION DOCUMENTS
ADDENDUM



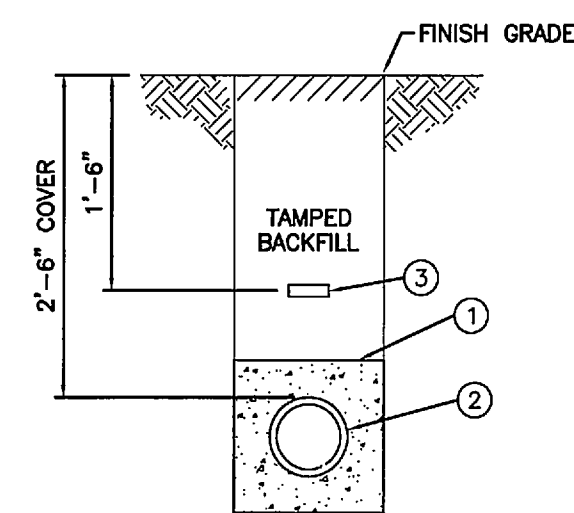
ELECTRICAL
FIRST FLOOR
POWER

E111

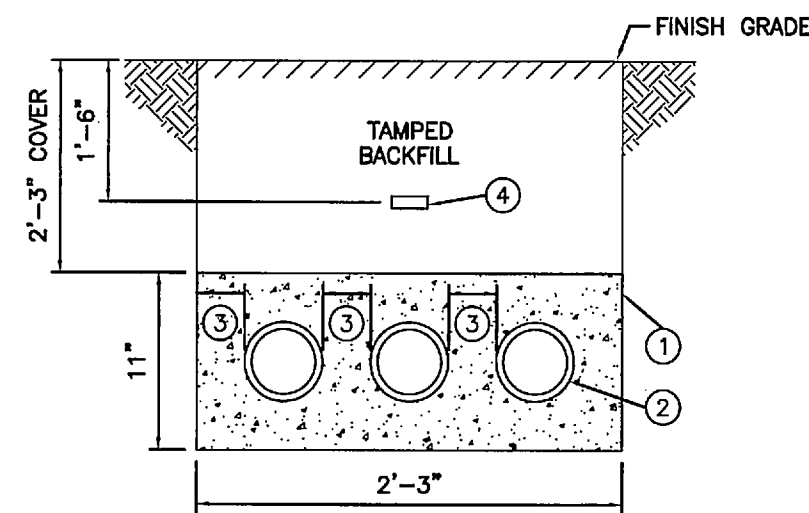
PROJECT NO.: BX106



FIRST FLOOR POWER PLAN
1/8" = 1' - 0"



UNDERGROUND DUCT
SCALE: NONE



UNDERGROUND DUCTS
SCALE: NONE

ROOM NUMBERS
AND NAMES

- 100 LOBBY
- 101 INTV #1 SAFE ROOM
- 102 RESTROOM #1
- 103 CORRIDOR
- 104 VESTIBULE
- 105 RESTROOM #2
- 106 RADIO & RECORDS
- 107 SERGEANTS
- 108 CONTROL STAFF
- 109 BREAK
- 110 KITCHEN
- 111 RESTROOM #3
- 112 WATER SERVICE ROOM
- 113 STG
- 114 CONFERENCE
- 115 DETECTIVES
- 116 SUPPORT
- 117 REPORTS
- 118 JANITOR
- 119 COMMUNICATION EQUIP.
- 120 INTV #2
- 121 MULTIPURPOSE VEHICLE BAY
- D100 BOOKING & PROCESSING
- D101 CELL #1 DETOX
- D102 CELL #2
- D103 CELL #3 CLEAN UP
- D104 SALLYPORT
- D105 STORAGE
- D106 INTV #3
- D107 SEC VEST
- S101 STAIR #1
- S102 STAIR #2

NOTES

- WIREMOLD ALDS4000 ALUMINUM 2-CHANNEL SURFACE MOUNT RACEWAY WITH DUPLEX RECEPTACLES AND DATA 24" ON CENTER (ALDS4047D 20A). CIRCUIT TWO (2) NON-ADJACENT RECEPTACLES PER CIRCUIT. 48" MH. PROVIDE ALL ACCESSORIES FOR COMPLETE INSTALLATION.
- CEILING MOUNTED 2-GANG BOX WITH DUPLEX RECEPTACLE AND DATA CONNECTION FOR BOOKING CAMERA. CAMERA PROVIDED BY OTHERS. VERIFY LOCATION WITH ARCHITECT PRIOR TO ROUGH-IN.
- FOUR (4) - 4" CONDUIT SLEEVES CONNECTING THE DISPATCH RM# 106 AND COMMUNICATION RM# 119 BELOW THE SLAB IN CORRIDOR. ROOMS 106, 119 SHALL HAVE SUNKEN SLAB 16" BELOW CORRIDOR SLAB AND RAISED FLOOR BY GC. SLEEVES SHALL STUB OUT ON EITHER SIDE OF CORRIDOR.
- PAINTED PLYWOOD BACKBOARD ON ALL WALLS FOR TELE/DATA EQUIPMENT. PLYWOOD NOT TO INTERFERE WITH REMOVAL OF RAISED FLOOR TILES.
- 2 - 4" CONDUITS FOR ANTENNA SIGNAL AND 1 - 2" PVC CONDUIT FOR GROUND SHALL RISE UP TO THIRD FLOOR AND OUT TO ROOF FOR POLICE RADIO ANTENNA. SEE NOTE 2 SHEET E131 FOR THIRD FLOOR POSITIONING.
- MOUNT JUNCTION BOX ON SLAB BELOW RAISED FLOOR. EXTEND FLEXIBLE WHIP UP TO QUAD RECEPTACLE MOUNTED ON FURNITURE. RAISED FLOOR SUPPLIER SHALL MAKE FLOOR CUTS.
- MOUNT AT 48" AFF. UNLESS INDICATED OTHERWISE ON PLANS.
- SYSTEM GROUND BAR, SEE DETAIL B/E200.
- PROVIDE BOX AT EITHER SIDE OF WINDOW MOUNTED AT 48" AFF. STUB A .5" CONDUIT FROM EACH BOX TO BELOW RAISED FLOOR.
- WIRE ONE HALF OF EACH QUAD TO CIRCUIT EM2-39 THE REMAINING HALF TO 1A-28. MOUNT BOTH AT 18"
- SUB-SYSTEM GROUND BAR, FED FROM SYSTEM GROUND BAR IN ROOM #119.