

ROOF  $\approx 14^\circ$  slope Front of roof to back

8"x8" Cedar Post

8"x8" Cedar Post

DOOR

Handrail

32"

4"x4"

36"

Cement Post Footings

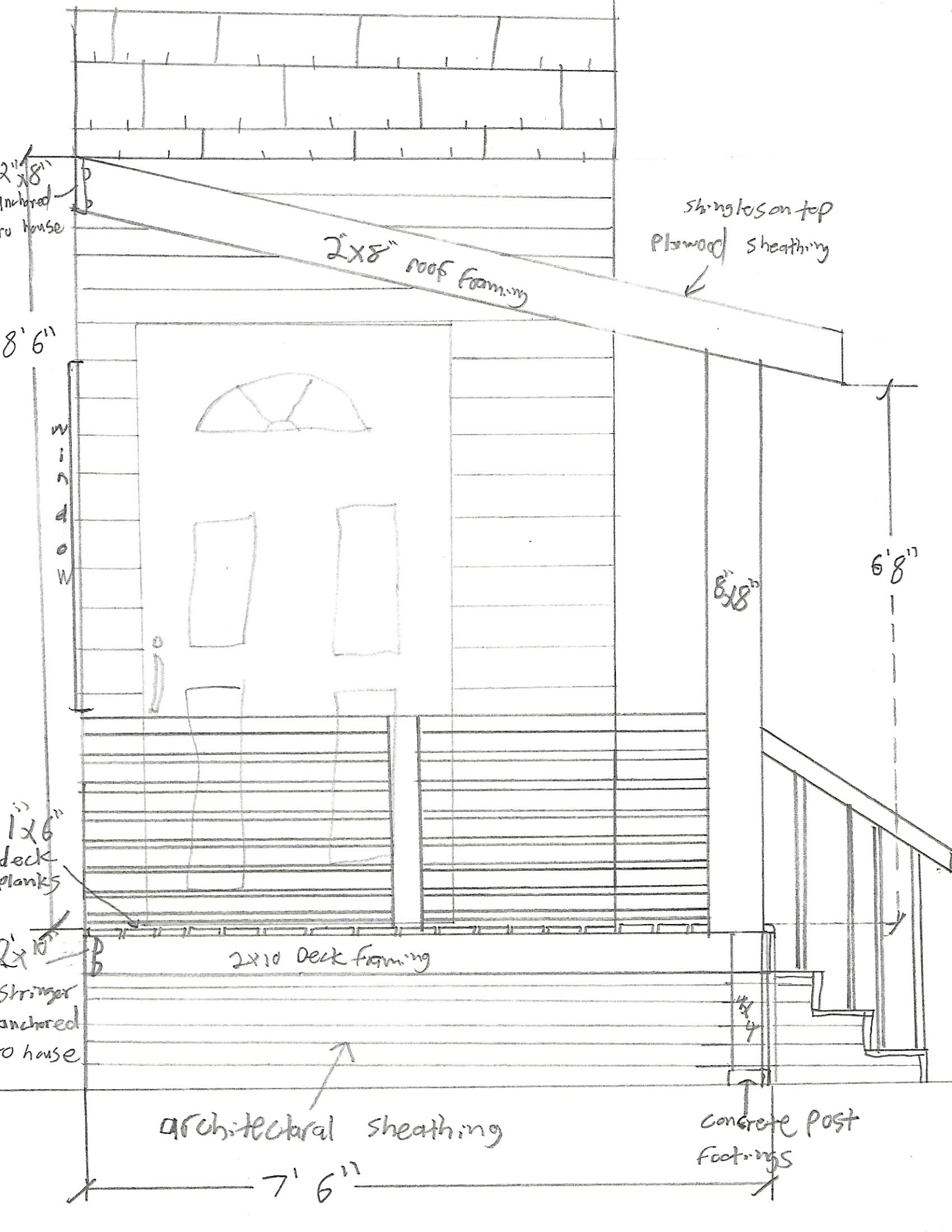
4"x4" Pressure treated posts

2"x10" Deck Framing

14"

Deck surface covered with 1"x6" stained cedar planks

\* Not to scale \*



2"x8"  
Inchored  
to house

2"x8" roof framing

shingles on top  
plowwood sheathing

8'6"

w  
i  
n  
d  
o  
w

6'8"

8"x8"

1"x6"  
deck  
planks

2x10 Deck framing

2"x10"  
Stringer  
anchored  
to house

architectural sheathing

concrete post  
footings

7'6"