

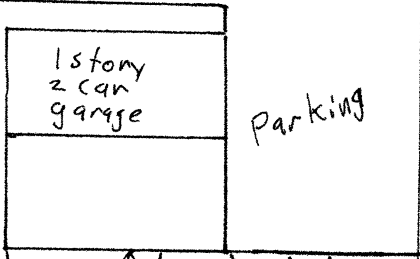
1/16" = 1'

NT

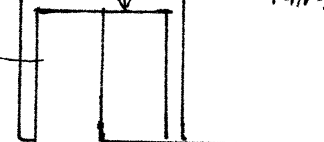
Alley

40'

Proposed porch
on existing
deck
12' x 12'



Paver
path/walk



2 story
house

Alley

7'



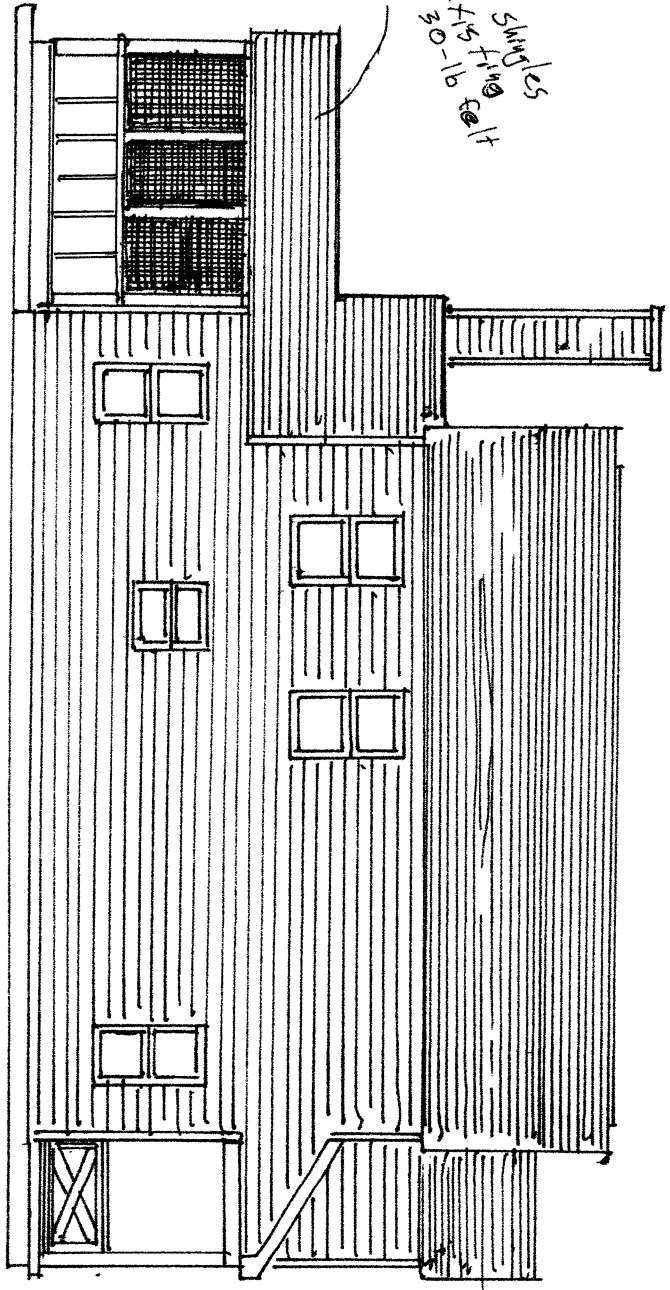
36" concrete
sidewalk

52'

South Roosevelt Avenue

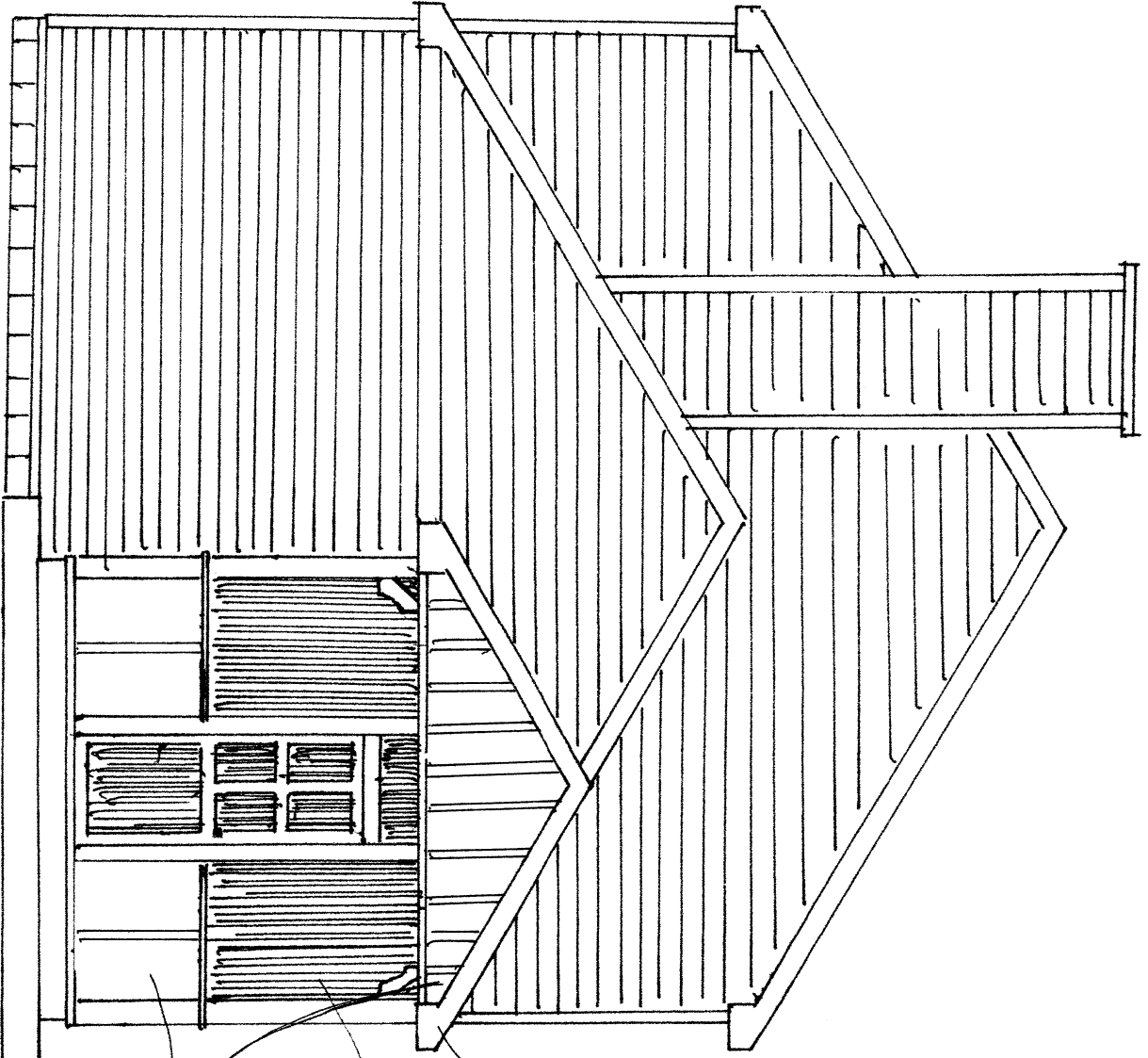
Left
(South)
1/8" = 1'

2-Tab asphalt shingles
in to e x 15 ft
over 30-1b felt
look



1" = 1'

Back
(west)



1x6 rake and
fascia clad in
aluminum to
match house

fixed aluminum
or vinyl screen

Composite
cement board/batten
Painted white

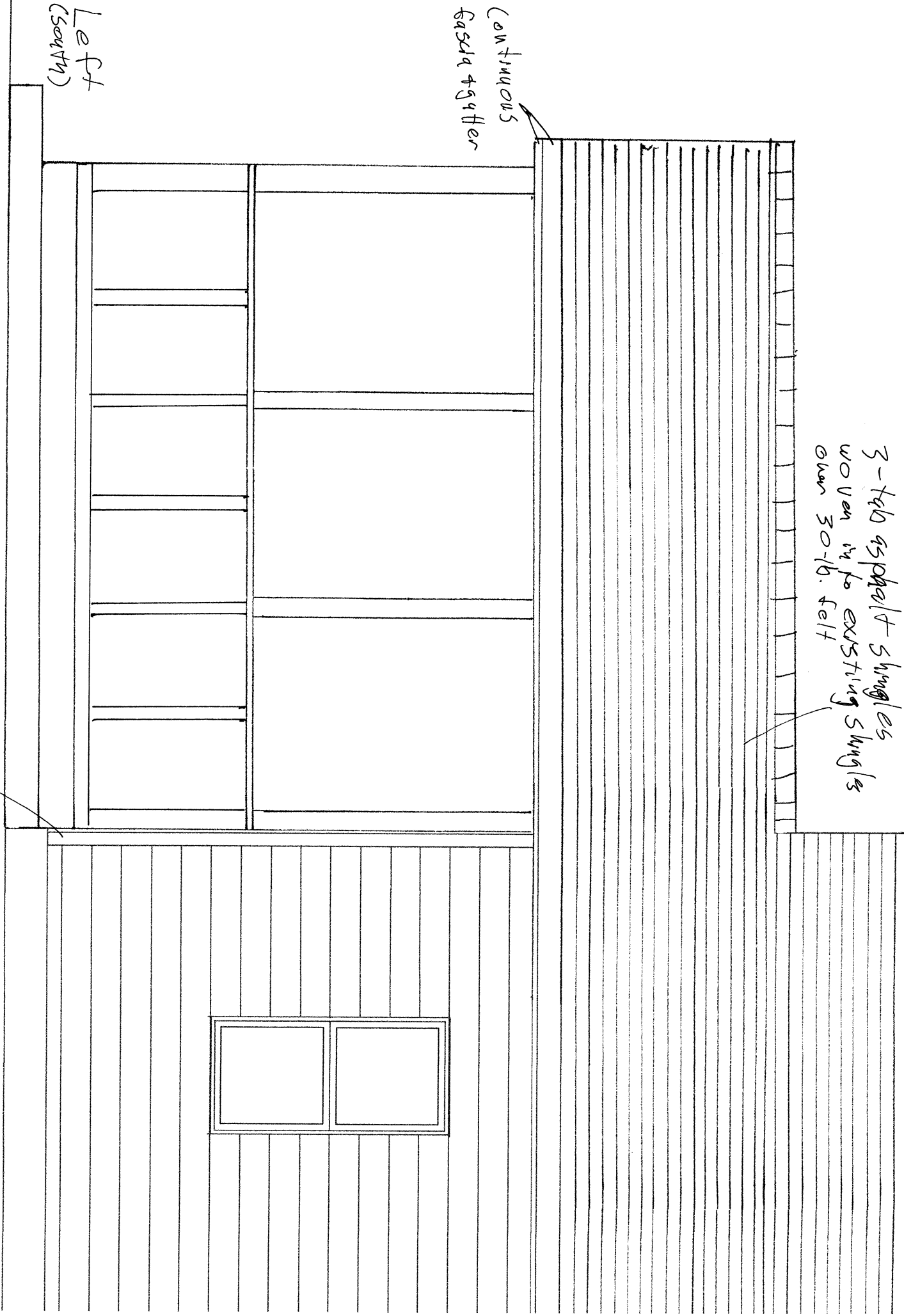
3-1/2" asphalt shingles
woven in to existing shingles
over 30-lb. felt

continuous
fascia gutter

Left
(South)

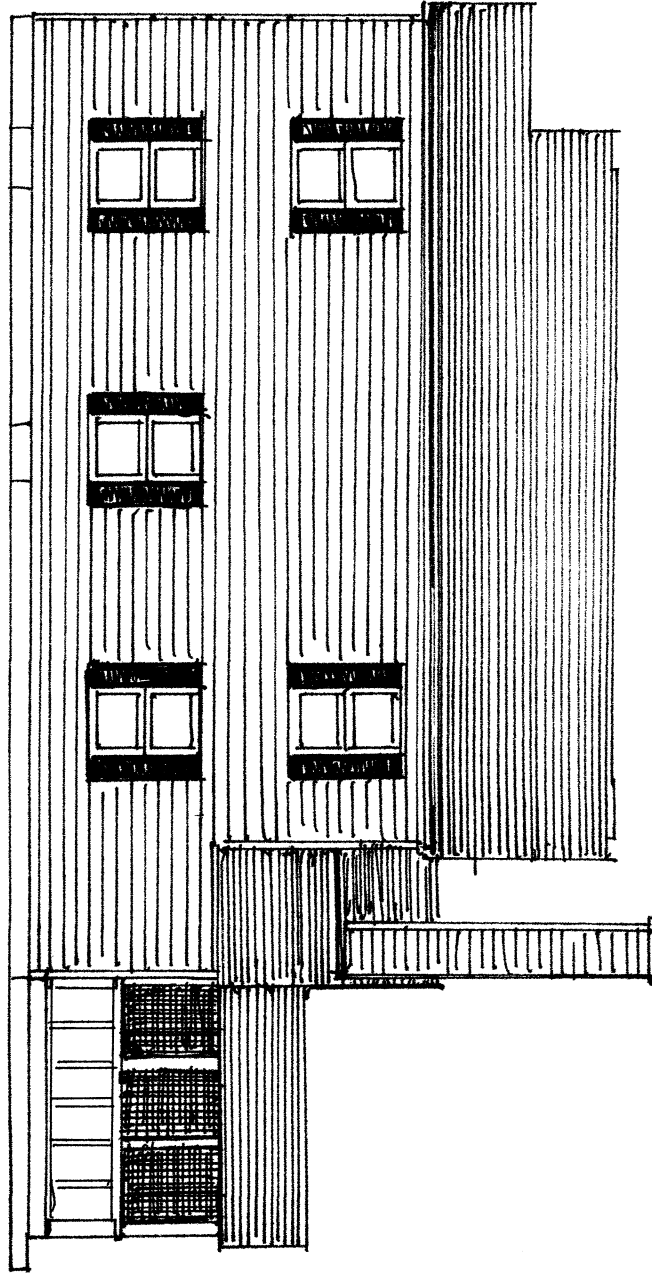
1 1/2" = 1'

VINYL corner trim
and J-channel



1/8" = 1'

Right
(North)



house sheathing

load-bearing
4x6
Pine post
screwed
to structure

Non-load-bearing
4x4 pine posts

load-bearing
6x6 pine
post from
beam to footer

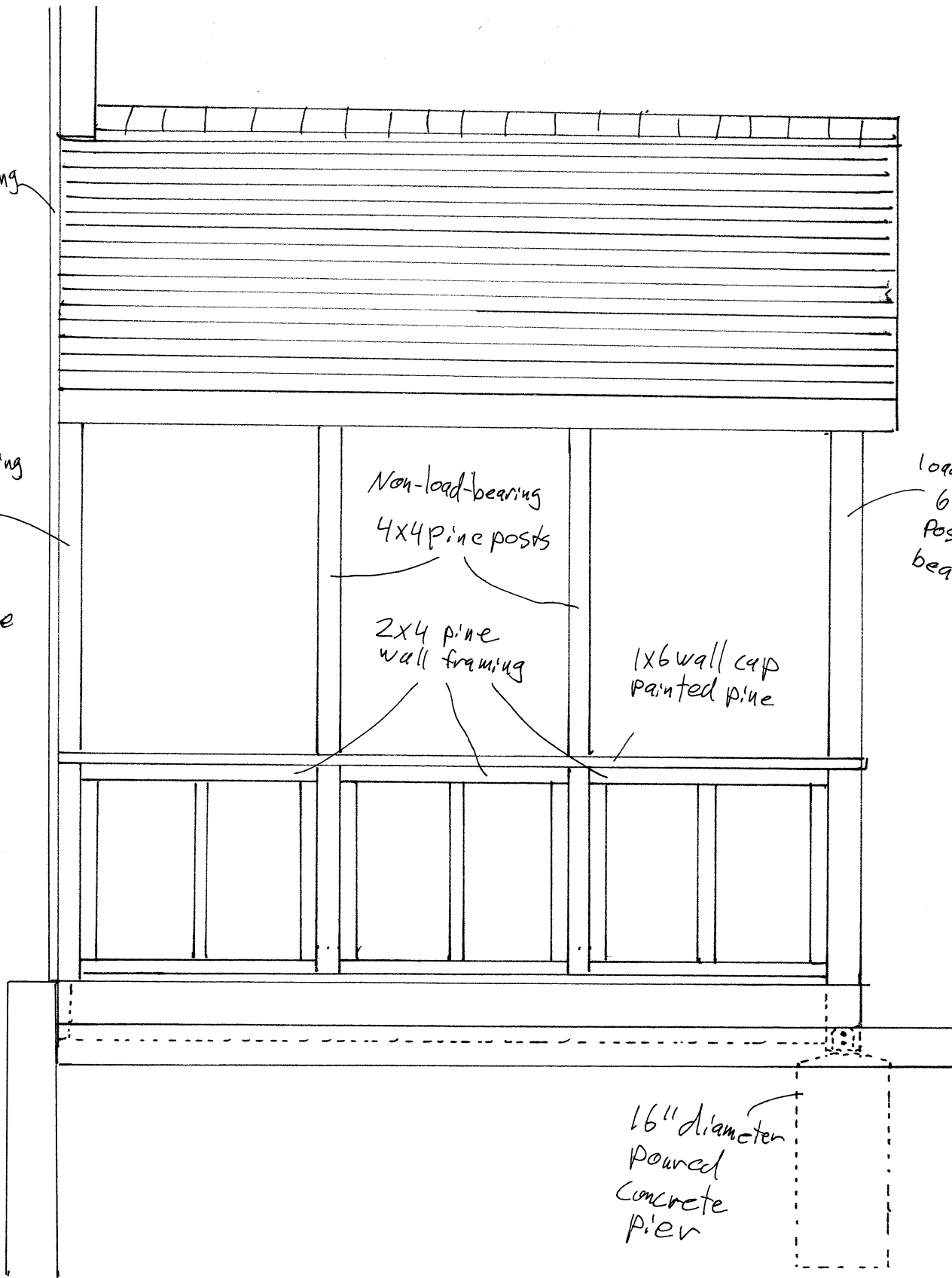
2x4 pine
wall framing

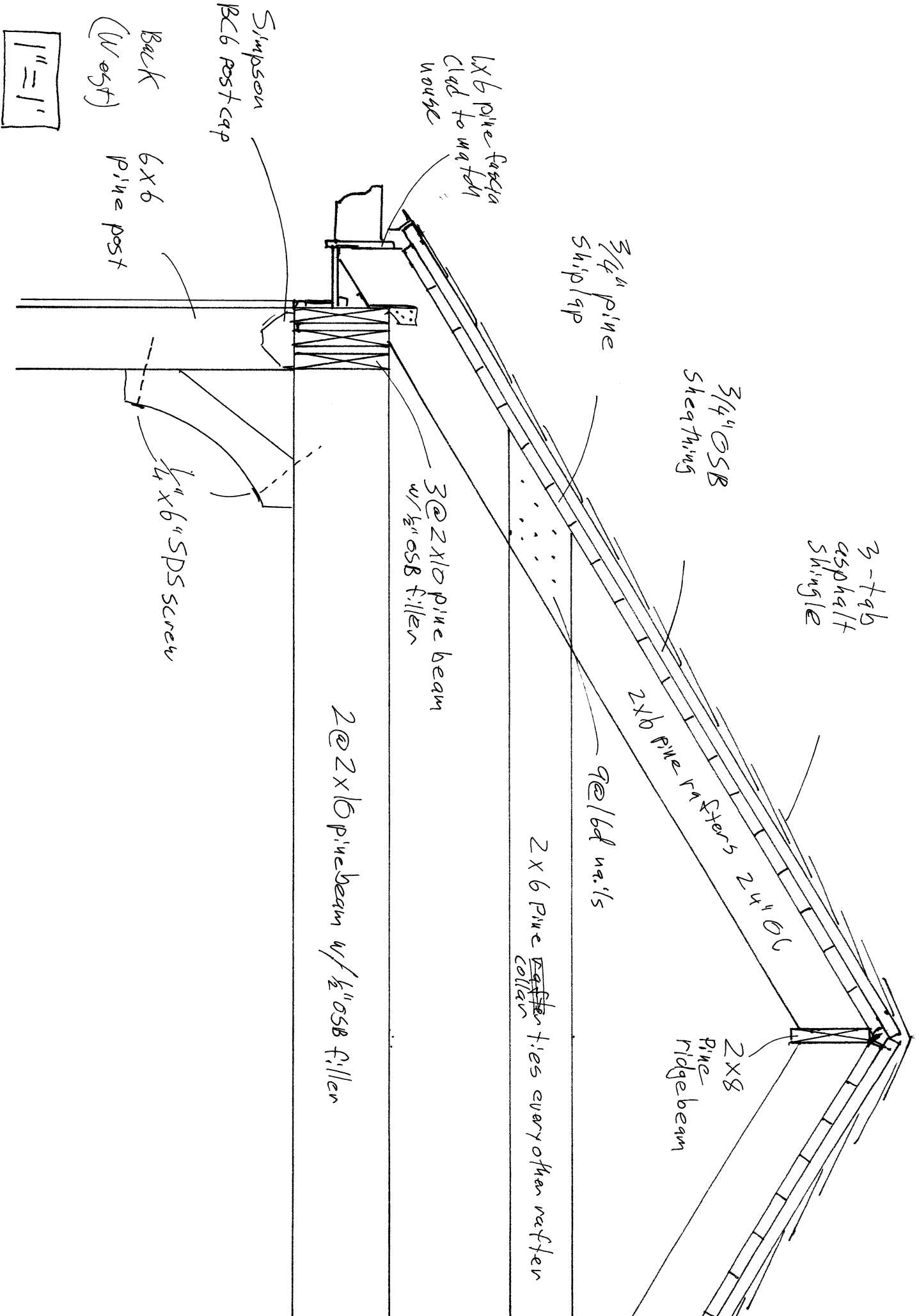
1x6 wall cap
painted pine

16" diameter
poured
concrete
pier

Right
(North)

$\frac{1}{2}'' = 1'$





3-7/8 asphalt shingle

3/4" OSB sheathing

3/4" pine ship lap

2x6 pine rafters 24" OC

2x8 pine ridge beam

9 @ 6d nails

2x6 pine collar ties every other rafter

3 @ 2x10 pine beam w/ 1/2" OSB filler

2 @ 2x10 pine beam w/ 1/2" OSB filler

1x6 pine fascia clad to match rafter

Simpson BC6 post cap

Back 6x6 pine post (West)

1" = 1'

1/4" x 6" SDS screw

4x6 pine post w/
3 @ 1/4" x 7" SDS screws
top and bottom

3 @ 2x10 pine beam
w/ 1/2" OSB filler

6x6 pine post
below beam
to footer

Simpson
LCE4Z
each side

3 @ 1/4" x 6" SDS screws
each side

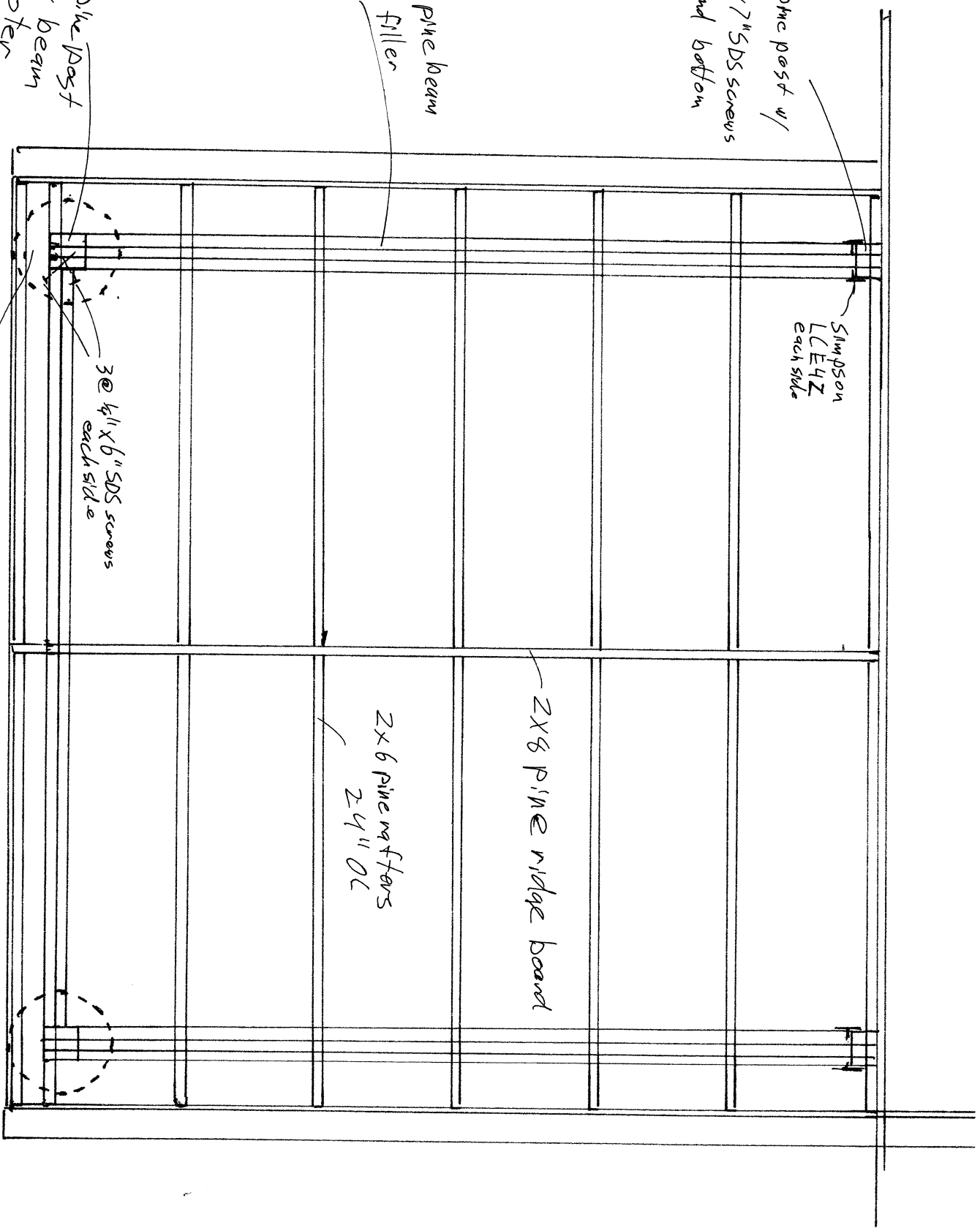
16" diameter
concrete pier

2x6 pine rafters
24" OC

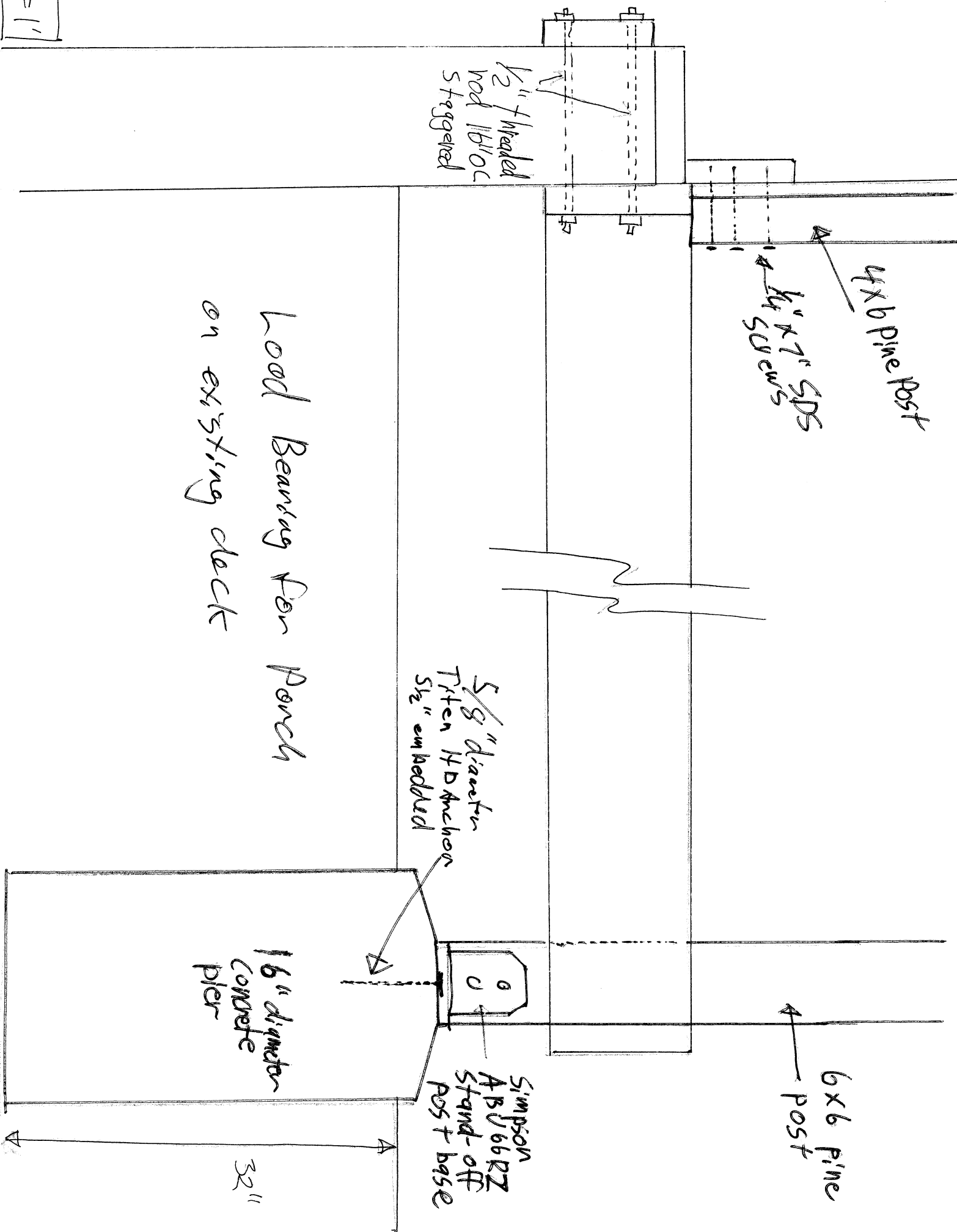
2x8 pine ridge board

1/2" = 1'

E ↑



1/2" = 1'



4x6 Pine Post

1/2" x 7" SDS screws

1/2" threaded rod 1/2" staggered

Load Bearing for Porch on existing deck

5/8" diameter Titen HD Anchor 5/2" embedded

16" diameter concrete pier

6x6 Pine Post

Simpson ABU66RZ Stand-off Post base

32"