

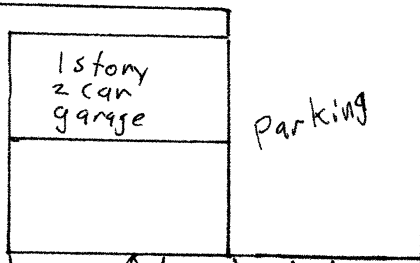
1/16" = 1'

NT

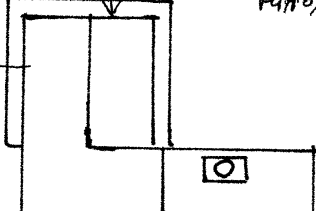
Alley

40'

Proposed porch  
on existing  
deck  
12' x 12'

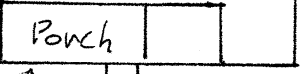


Paver  
path/walk



Alley

7'

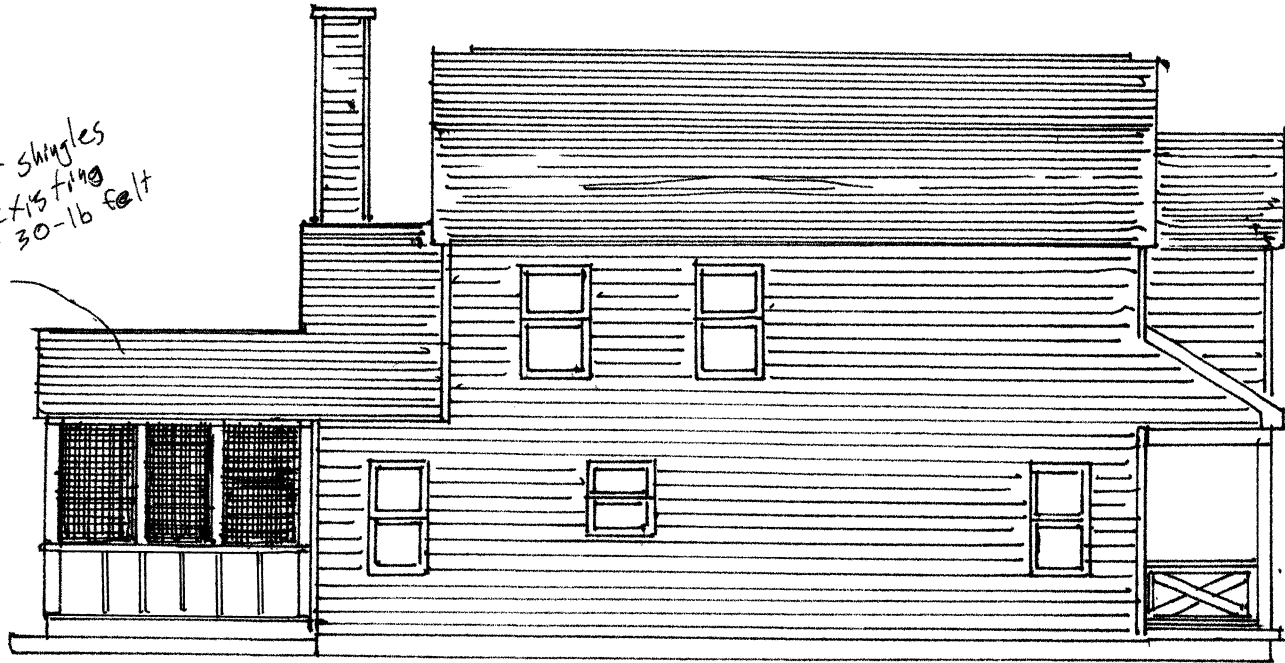


36" concrete  
sidewalk

52'

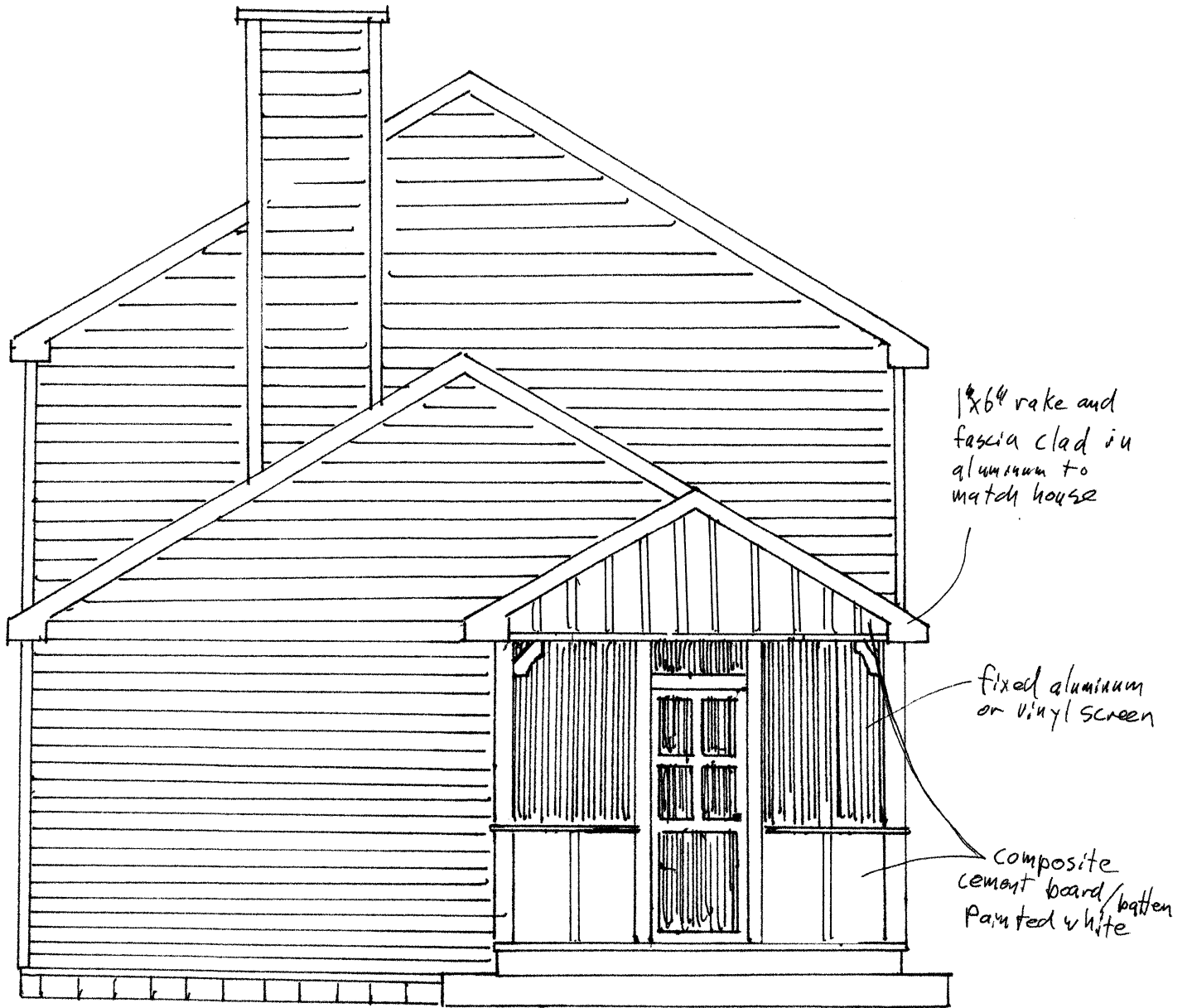
South Roosevelt Avenue

3-tab asphalt shingles  
woven into existing  
roof over 30-lb felt



Left  
(south)

$\frac{1}{8}'' = 1'$



Back  
(west)

$\frac{1}{4}'' = 1'$

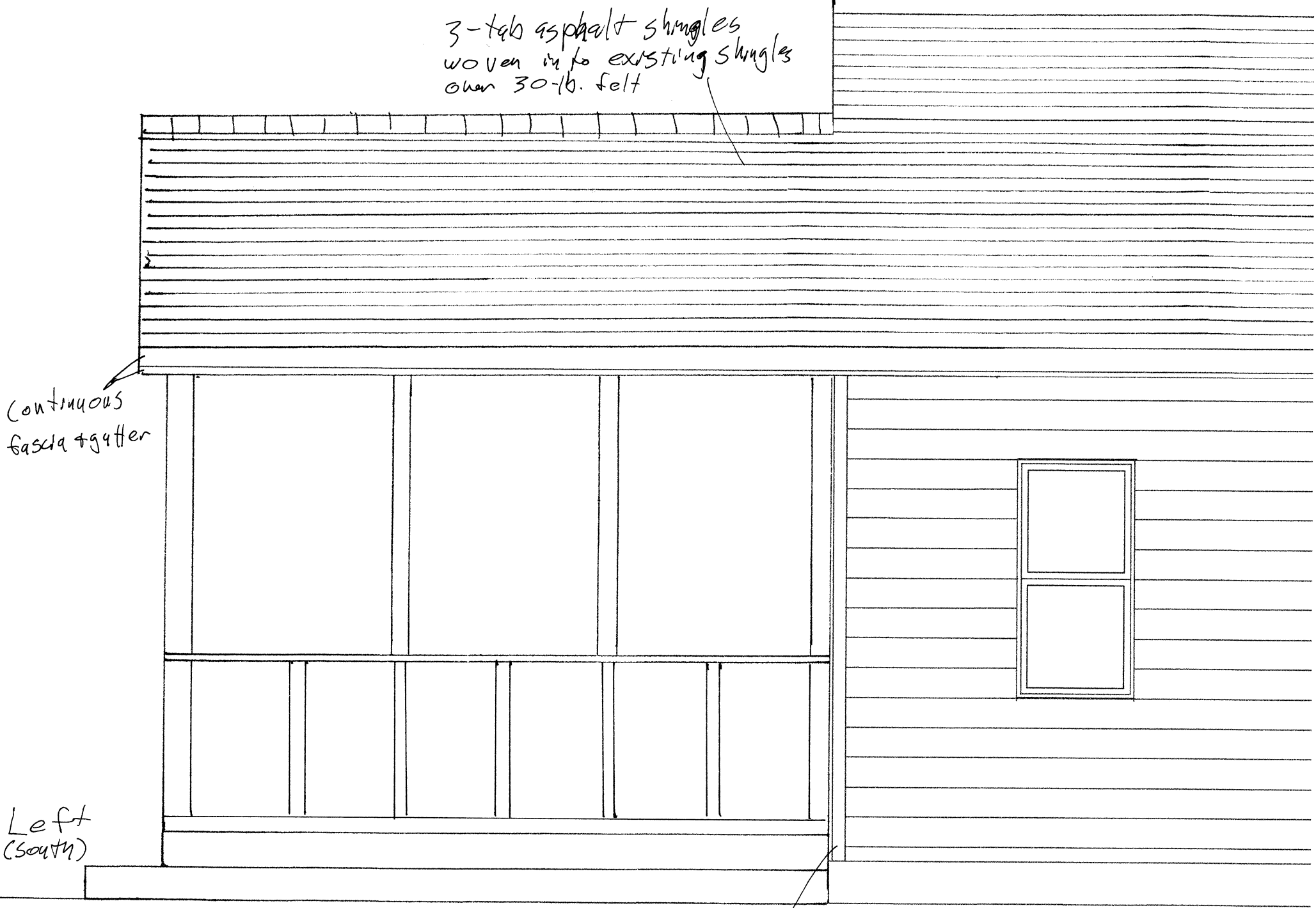
3-tab asphalt shingles  
woven into existing shingles  
over 30-lb. felt

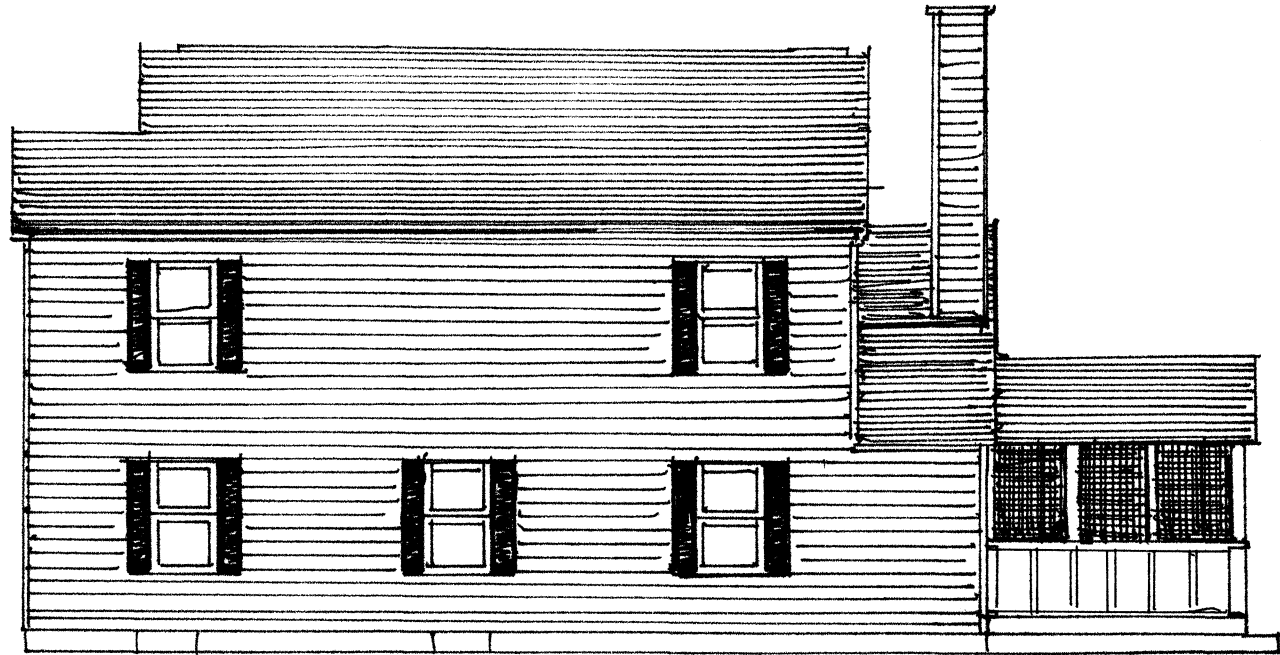
continuous  
fascia + gutter

Left  
(South)

$\frac{1}{2}'' = 1'$

vinyl corner trim  
and J-channel





Right  
(North)

$\frac{1}{8}'' = 1'$

house sheathing

load-bearing  
4x6  
Pine post  
screwed  
to structure

Non-load-bearing  
4x4 pine posts

load-bearing  
6x6 pine  
post from  
beam to footer

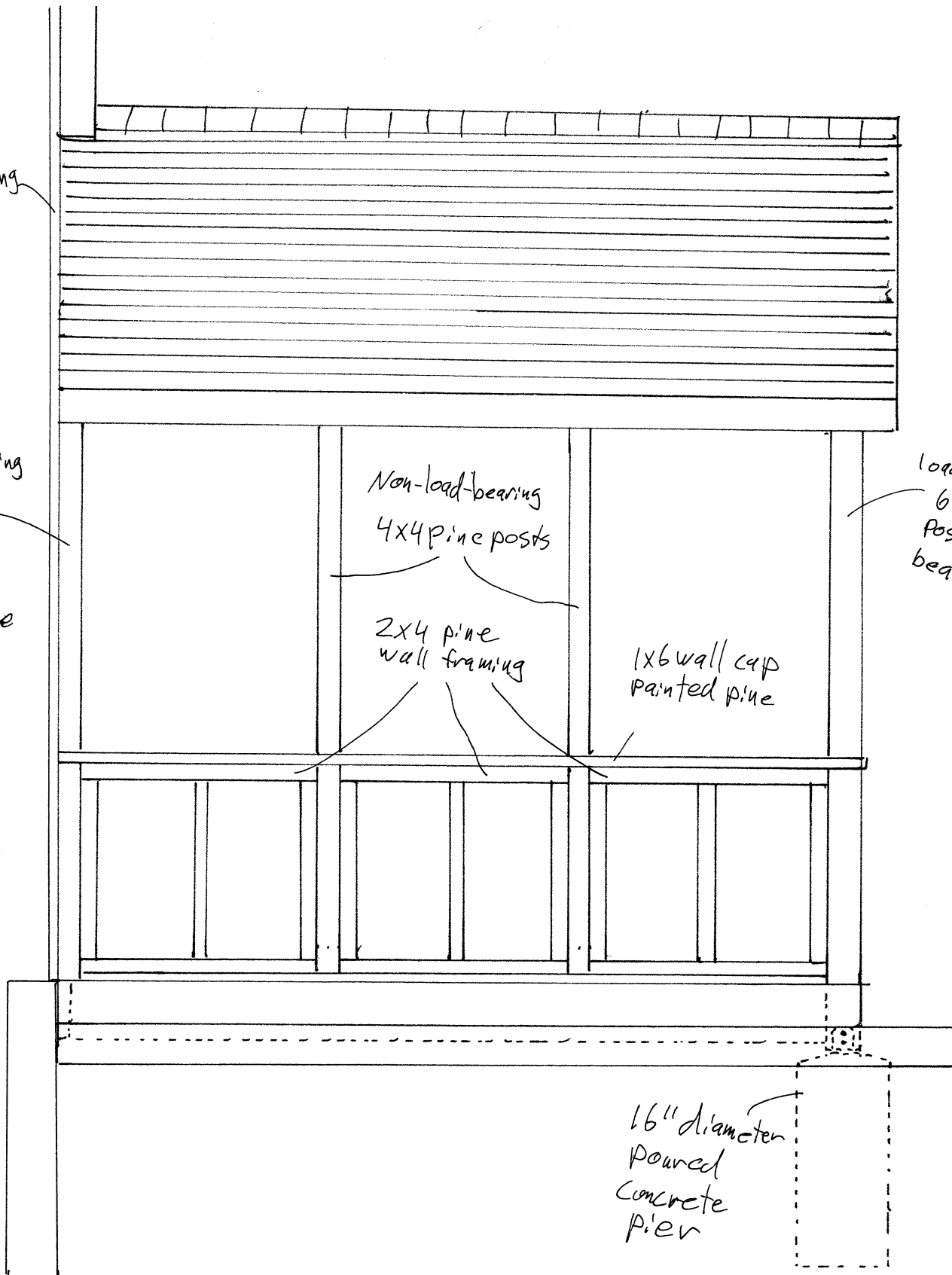
2x4 pine  
wall framing

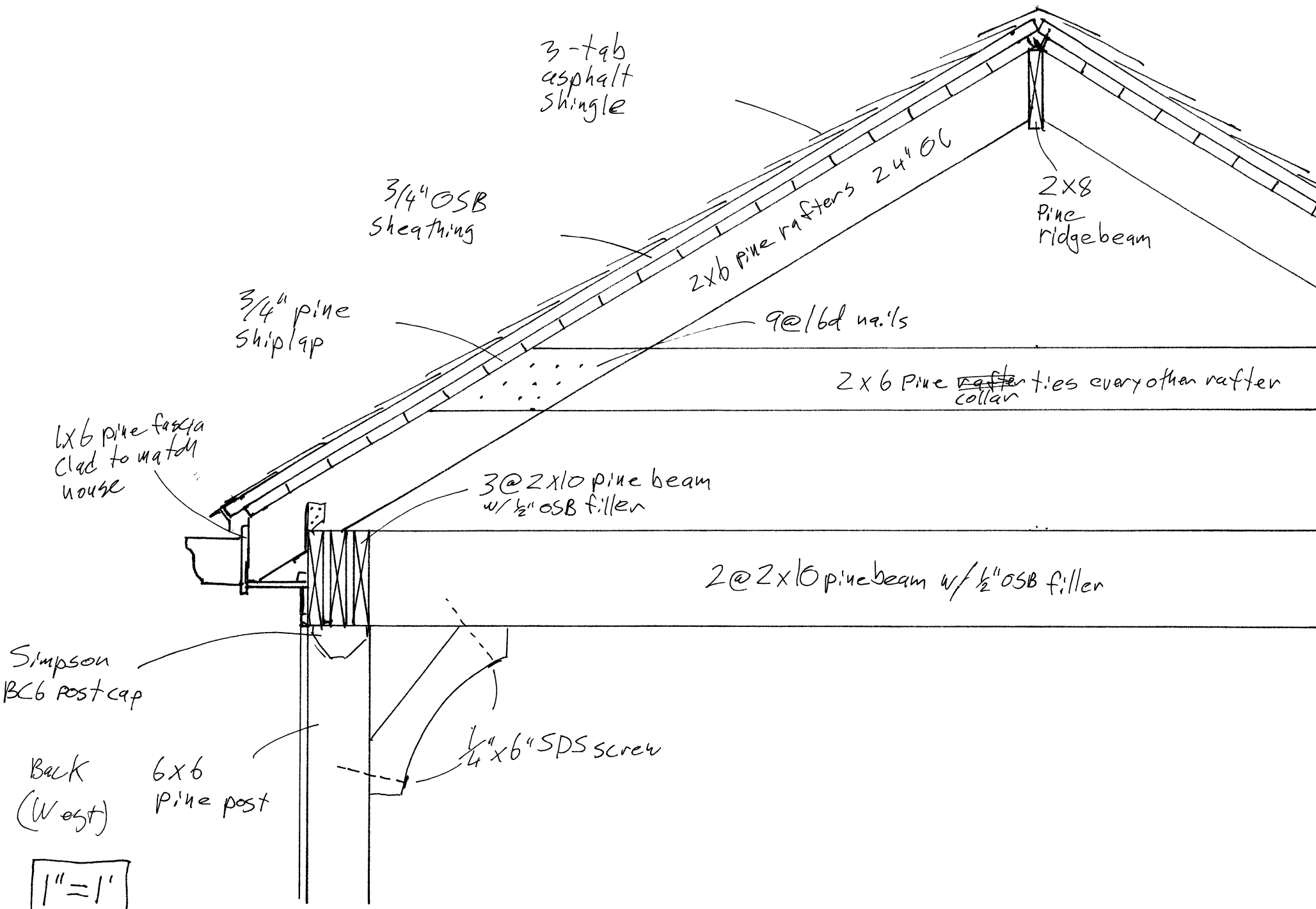
1x6 wall cap  
painted pine

16" diameter  
poured  
concrete  
pier

Right  
(North)

$\frac{1}{2}'' = 1'$





3-tab  
asphalt  
shingle

3/4" OSB  
Sheathing

3/4" pine  
shiplap

2x6 pine rafters 24" OC

2x8  
Pine  
ridgebeam

9 @ 16d nails

2x6 Pine rafter  
collar ties every other rafter

6x6 pine fascia  
clad to match  
house

3 @ 2x10 pine beam  
w/ 1/2" OSB filler

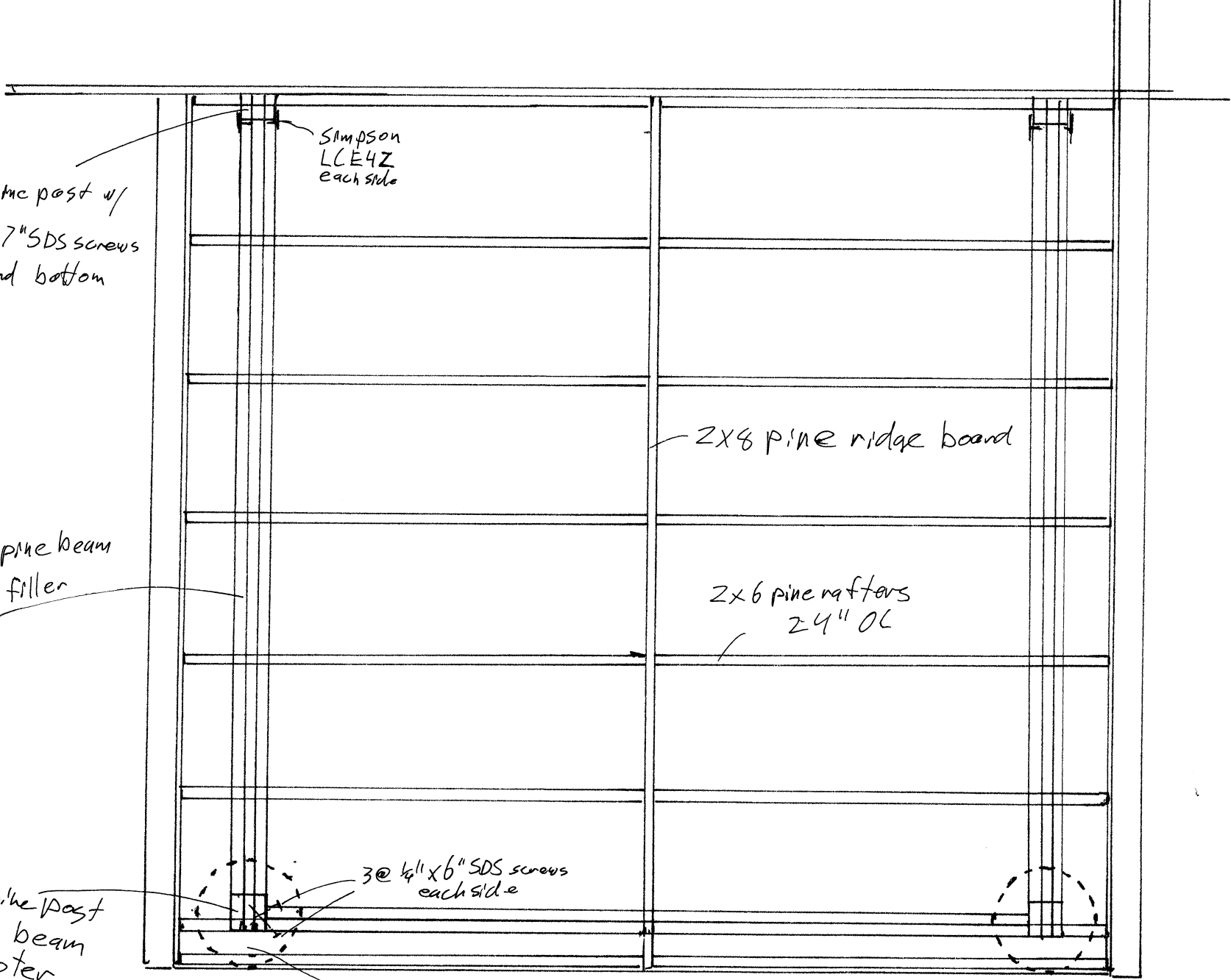
2 @ 2x10 pine beam w/ 1/2" OSB filler

Simpson  
BC6 post cap

Back  
(West)  
6x6  
Pine post

1/4" x 6" SPS screw

1" = 1'



4x6 pine post w/  
3 @ 1/4"x7" SDS screws  
top and bottom

Simpson  
LCE4Z  
each side

3 @ 2x10 pine beam  
w/ 1/2" OSB filler

2x8 pine ridge board

2x6 pine rafters  
24" OC

6x6 pine post  
below beam  
to footer

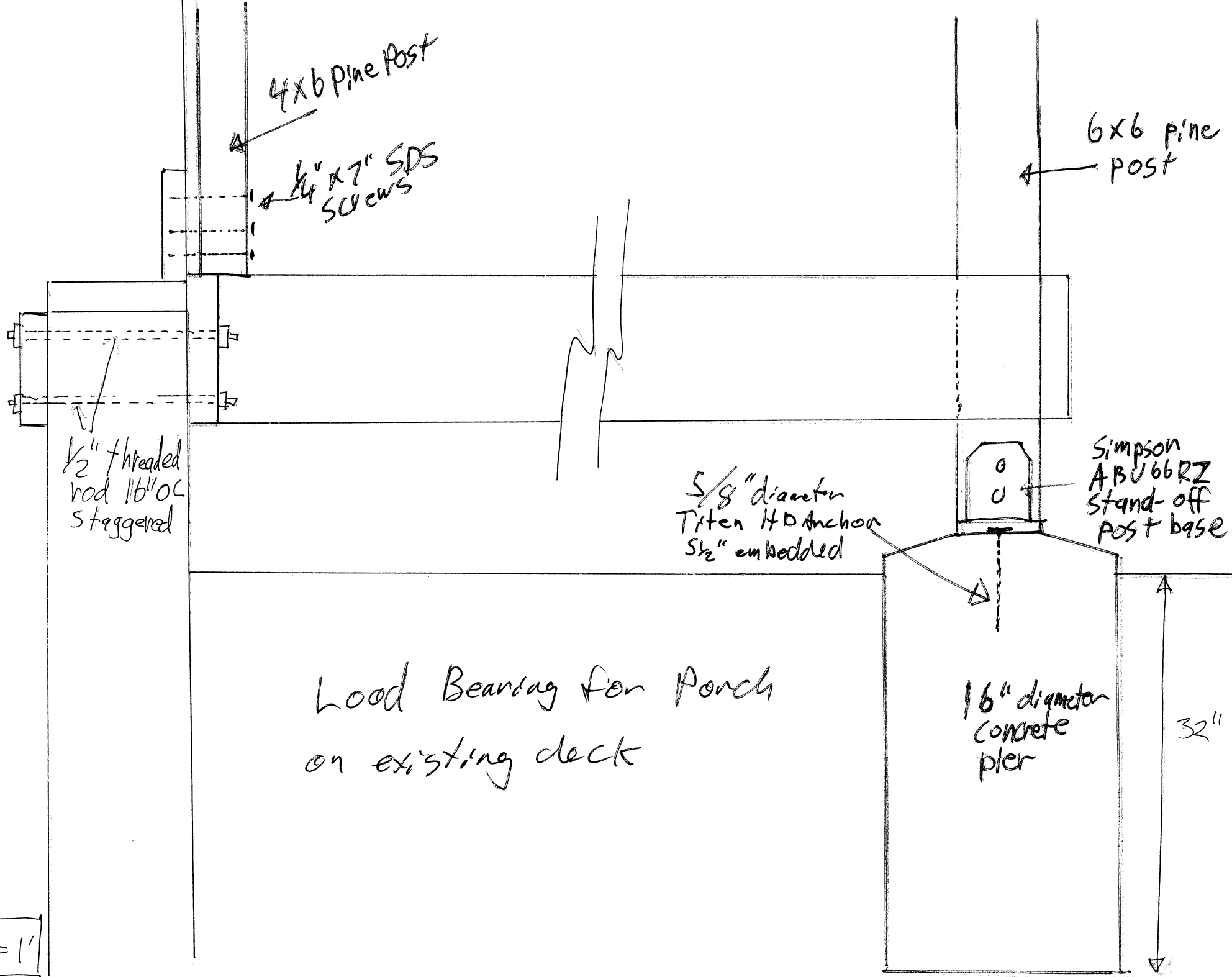
3 @ 1/4"x6" SDS screws  
each side

16" diameter  
concrete pier

E↑

1/2" = 1'





4x6 Pine Post

1/4" x 7" SDS Screws

6x6 pine post

1/2" threaded rod 16" OC staggered

5/8" diameter Titen HD Anchor 5 1/2" embedded

Simpson ABU66RZ stand-off post base

Load Bearing for Porch on existing deck

16" diameter concrete pier

32"

1/2" = 1'