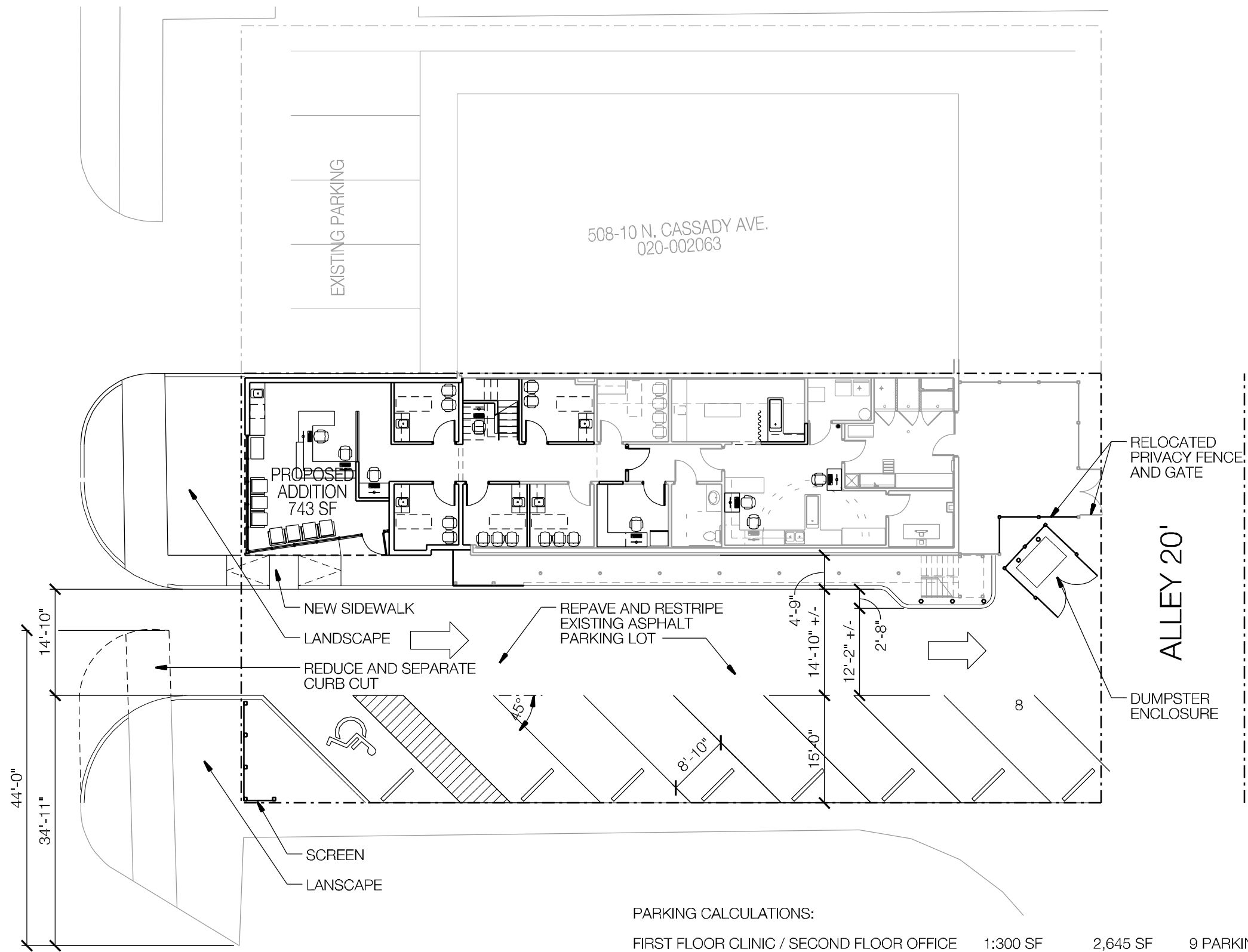


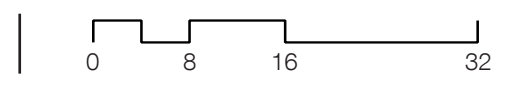
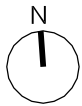
CASSADY AVE. (80' R.O.W.)



PARKING CALCULATIONS:

FIRST FLOOR CLINIC / SECOND FLOOR OFFICE	1:300 SF	2,645 SF	9 PARKING SPACES
SECOND FLOOR APARTMENTS	2 PER UNIT	3 UNITS	6 PARKING SPACES
			<hr/>
			15 PARKING SPACES REQUIRED
			8 PROPOSED PARKING SPACES

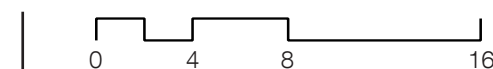
PROPOSED SITE PLAN





EXISTING CASSADY AVE. VIEW

ADDITION TO THE BEXLEY ANIMAL HOSPITAL
500 N. CASSADY AVE. - BEXLEY, OHIO
© 2018 COPYRIGHT - MODE ARCHITECTS ALL RIGHTS RESERVED



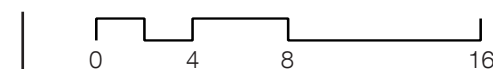
modearchitects

A2



EXISTING ALLEY VIEW

ADDITION TO THE BEXLEY ANIMAL HOSPITAL
500 N. CASSADY AVE. - BEXLEY, OHIO
© 2018 COPYRIGHT - MODE ARCHITECTS ALL RIGHTS RESERVED



modearchitects

A3

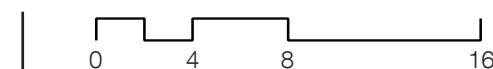


EXISTING ALLEY VIEW

ADDITION TO THE BEXLEY ANIMAL HOSPITAL

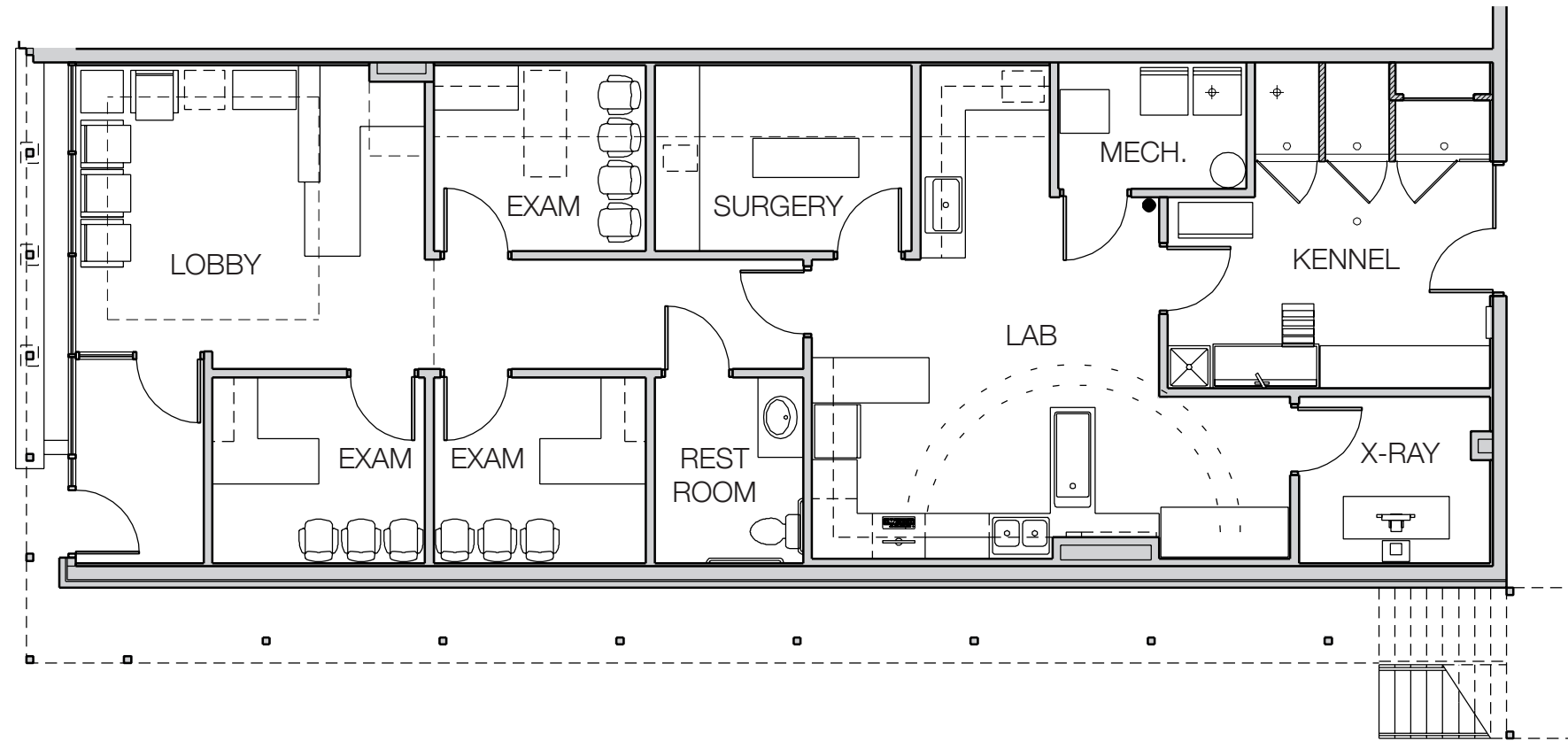
500 N. CASSADY AVE. - BEXLEY, OHIO

© 2018 COPYRIGHT - MODE ARCHITECTS ALL RIGHTS RESERVED



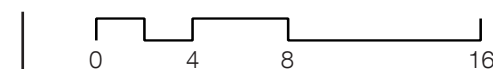
modearchitects

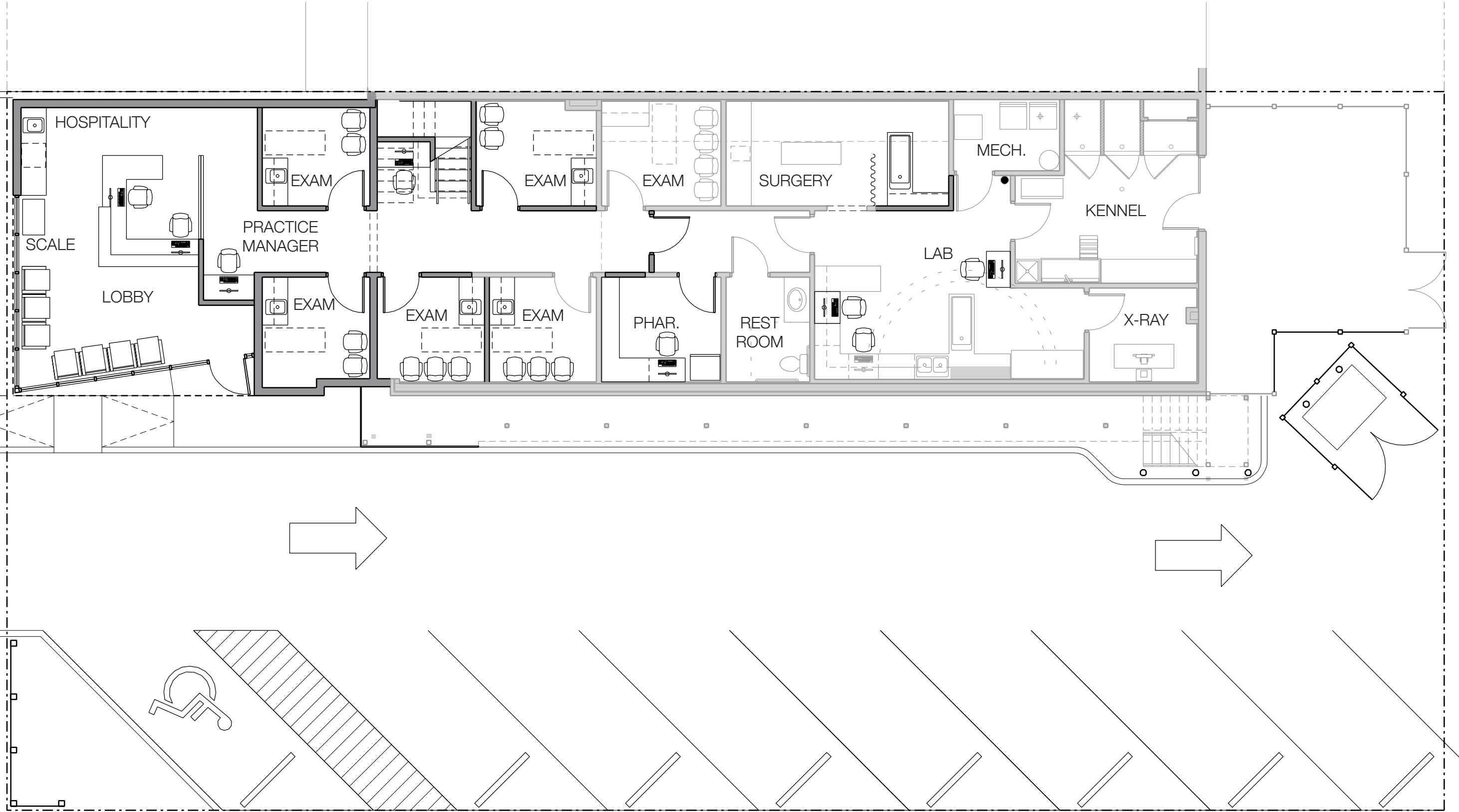
A4



PLAN EXISTING

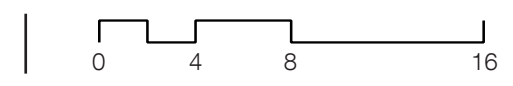
ADDITION TO THE BEXLEY ANIMAL HOSPITAL
500 N. CASSADY AVE. - BEXLEY, OHIO
© 2018 COPYRIGHT - MODE ARCHITECTS ALL RIGHTS RESERVED





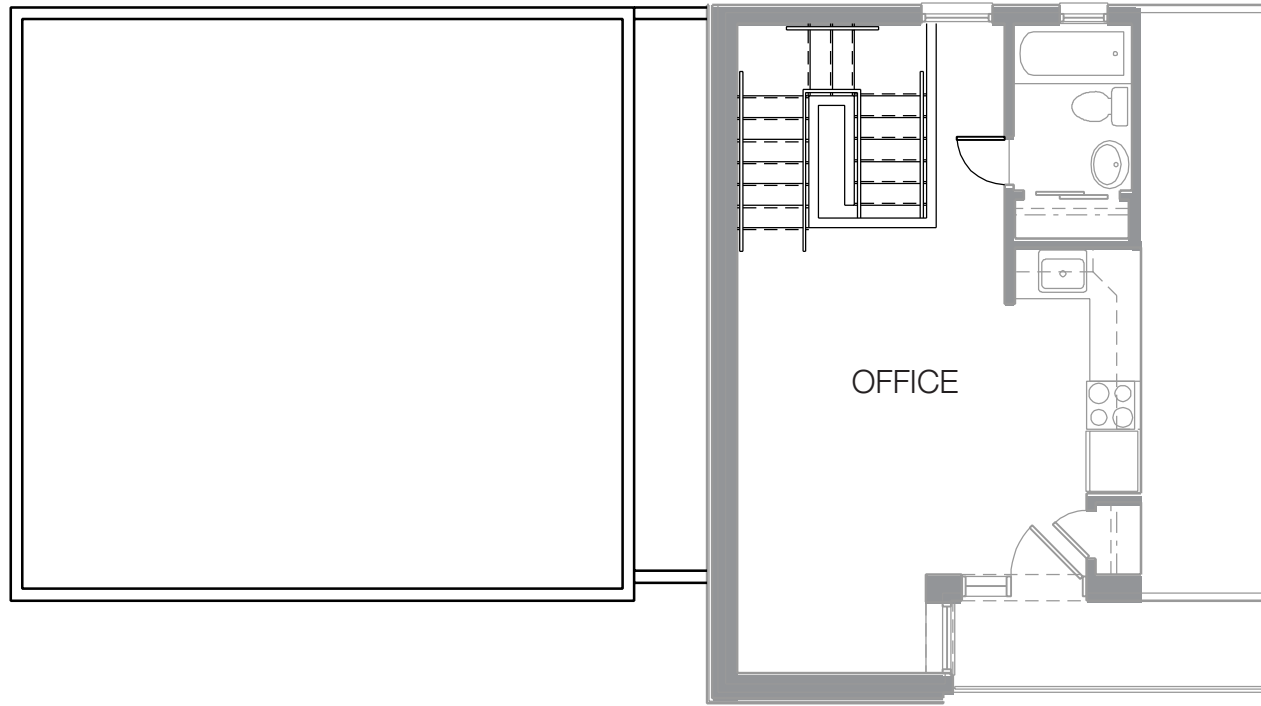
GROUND FLOOR PLAN

ADDITION TO THE BEXLEY ANIMAL HOSPITAL
 500 N. CASSADY AVE. - BEXLEY, OHIO
 © 2018 COPYRIGHT - MODE ARCHITECTS ALL RIGHTS RESERVED



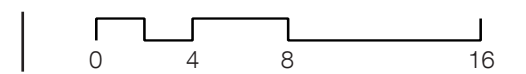
modearchitects

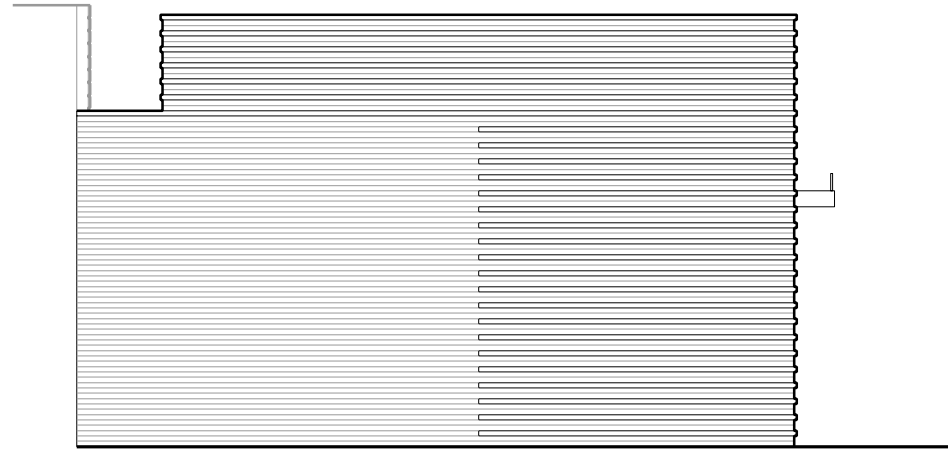
A6



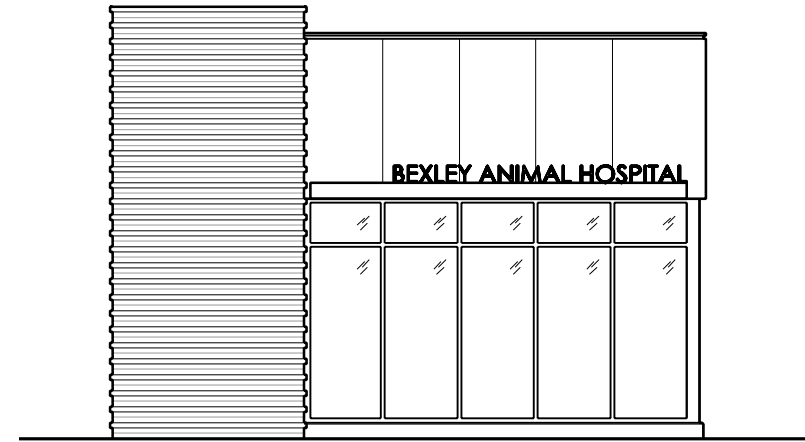
SECOND FLOOR PLAN

ADDITION TO THE BEXLEY ANIMAL HOSPITAL
500 N. CASSADY AVE. - BEXLEY, OHIO
© 2018 COPYRIGHT - MODE ARCHITECTS ALL RIGHTS RESERVED

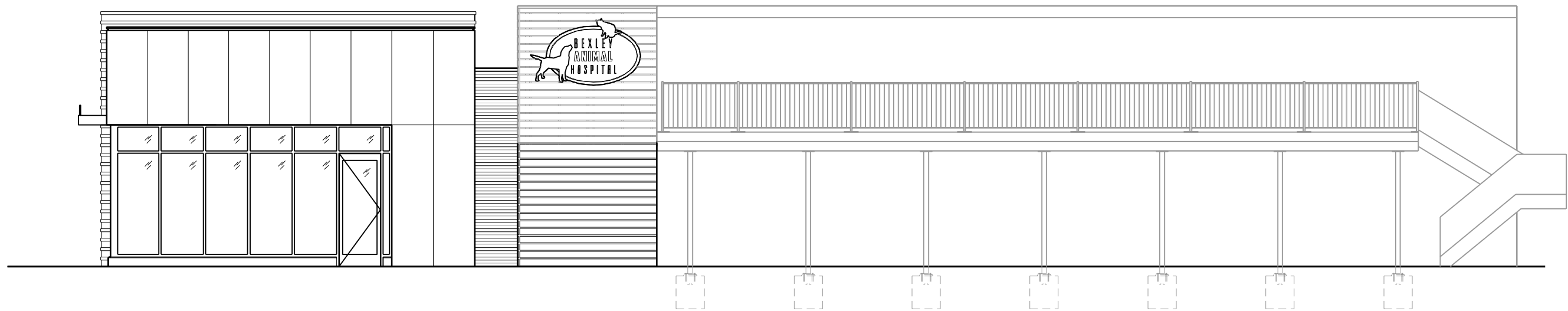




PROPOSED NORTH ELEVATION



PROPOSED WEST ELEVATION



PROPOSED SOUTH ELEVATION



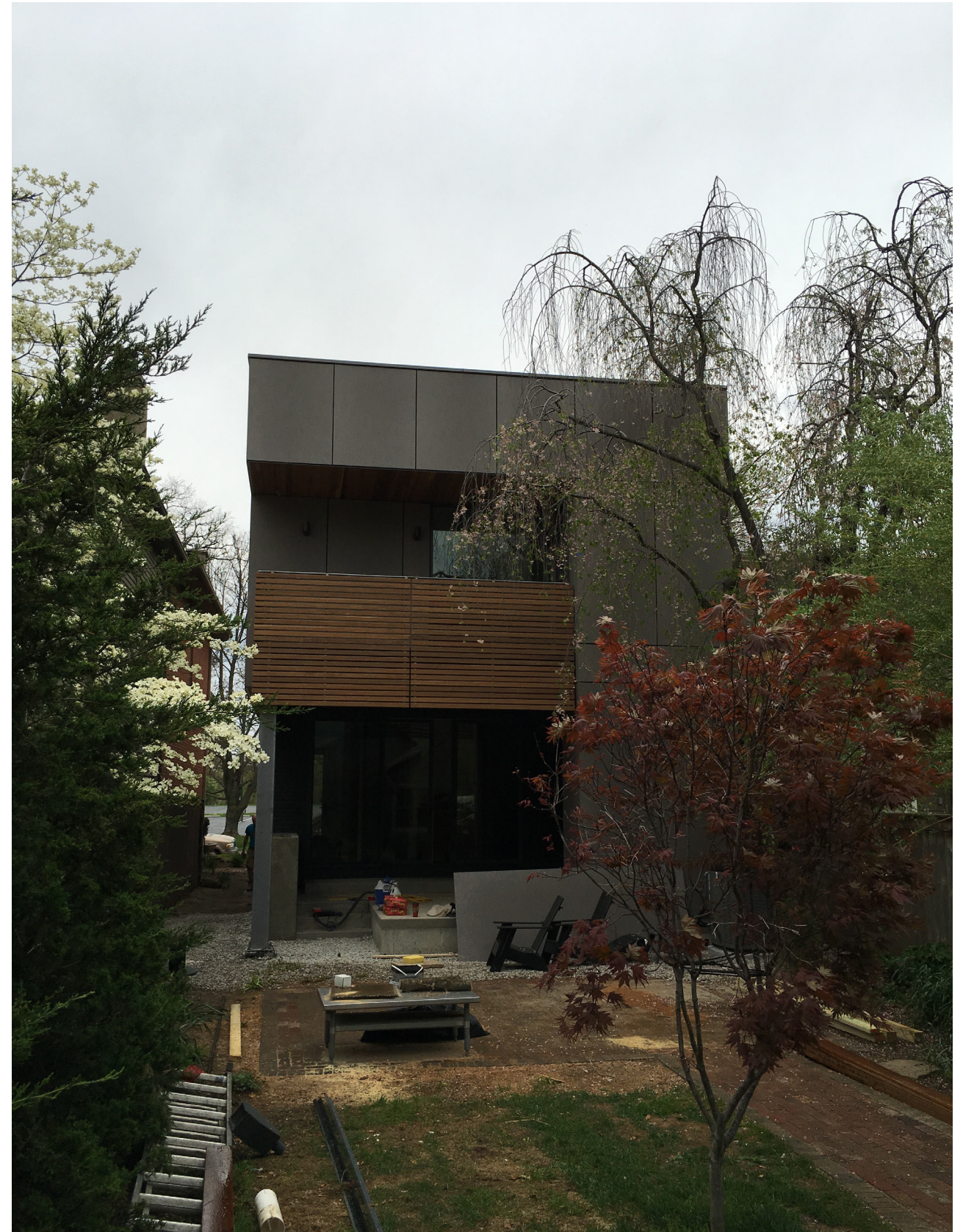
MASSING STUDY

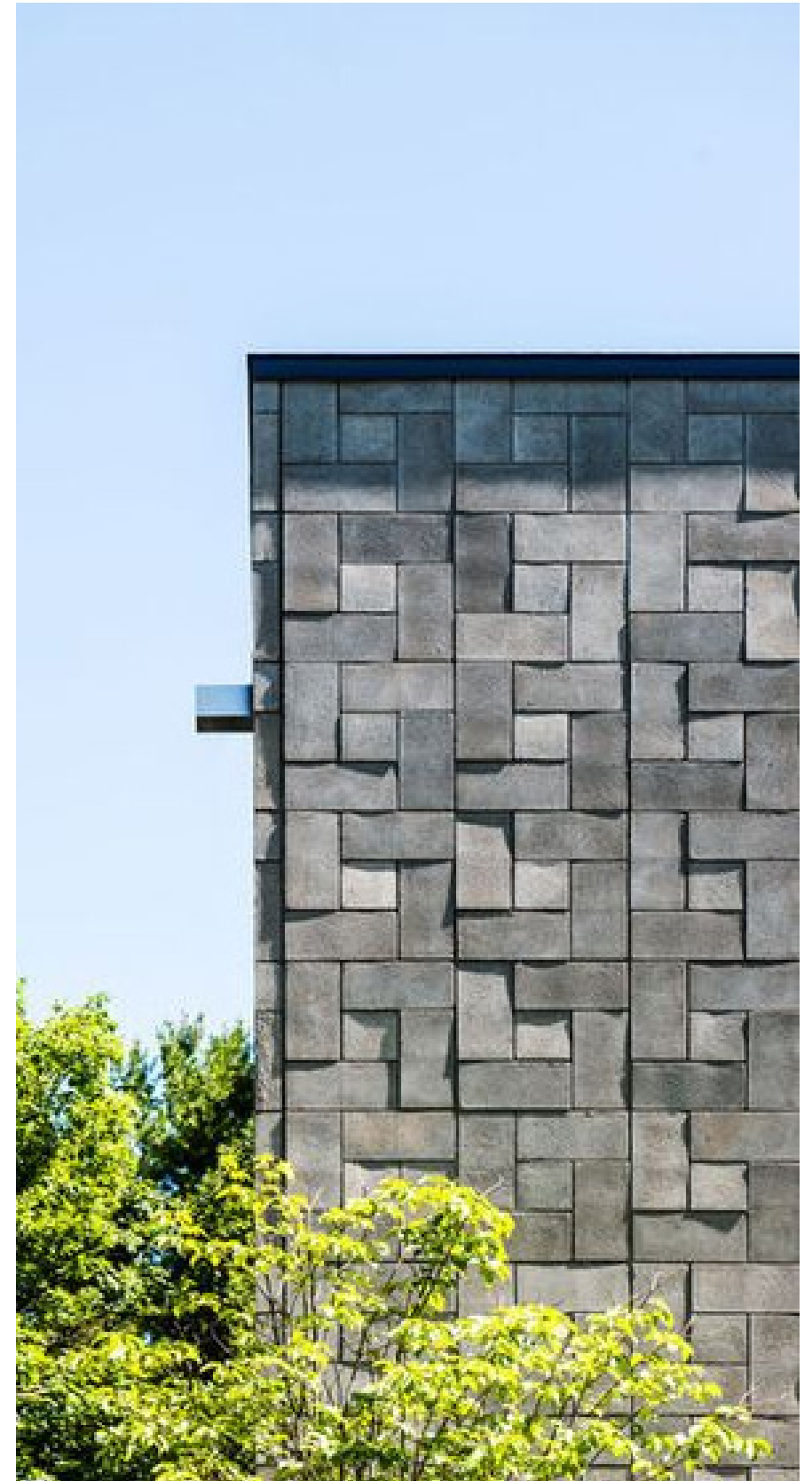
ADDITION TO THE BEXLEY ANIMAL HOSPITAL
500 N. CASSADY AVE. - BEXLEY, OHIO
© 2018 COPYRIGHT - MODE ARCHITECTS ALL RIGHTS RESERVED



MATERIAL PRECEDENT - CEMENT PANEL SIDING

ADDITION TO THE BEXLEY ANIMAL HOSPITAL
500 N. CASSADY AVE. - BEXLEY, OHIO
© 2018 COPYRIGHT - MODE ARCHITECTS ALL RIGHTS RESERVED





MATERIAL PRECEDENT - BRICK MASONRY

ADDITION TO THE BEXLEY ANIMAL HOSPITAL
500 N. CASSADY AVE. - BEXLEY, OHIO
© 2018 COPYRIGHT - MODE ARCHITECTS ALL RIGHTS RESERVED