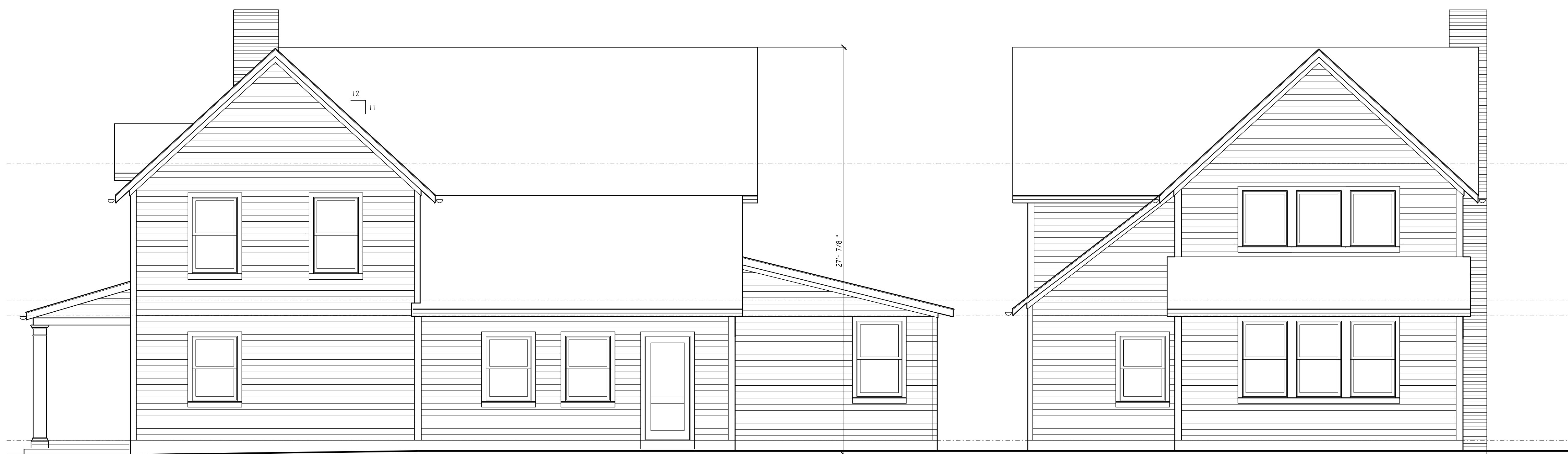


ASBUILT
NORTH ELEVATION
SCALE: 1/8" = 1'-0"

ASBUILT
WEST ELEVATION
SCALE: 1/8" = 1'-0"



PROPOSED
NORTH ELEVATION
SCALE: 1/8" = 1'-0"

PROPOSED
WEST ELEVATION
SCALE: 1/8" = 1'-0"