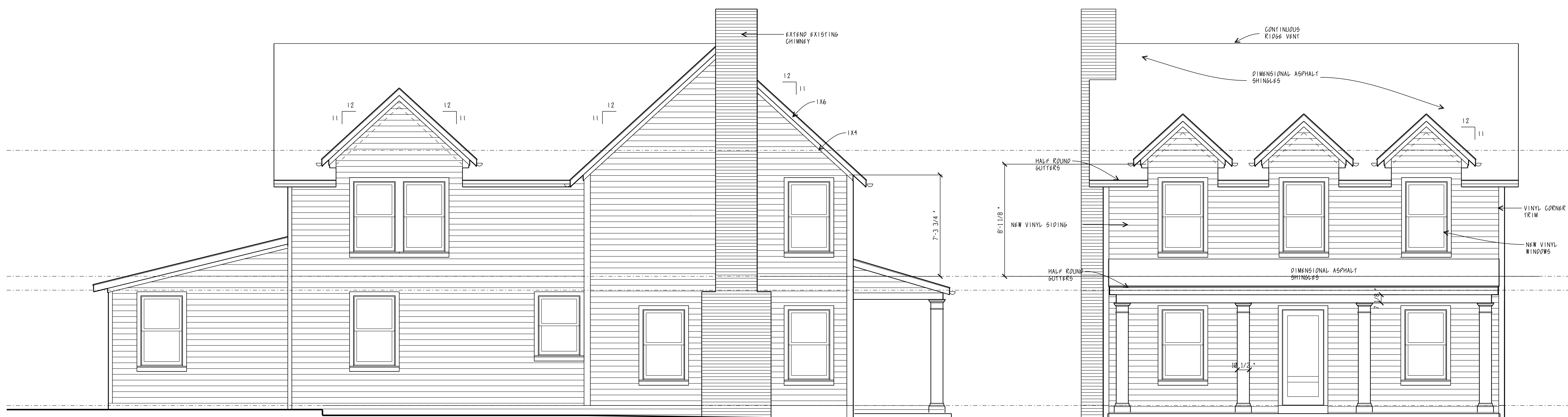




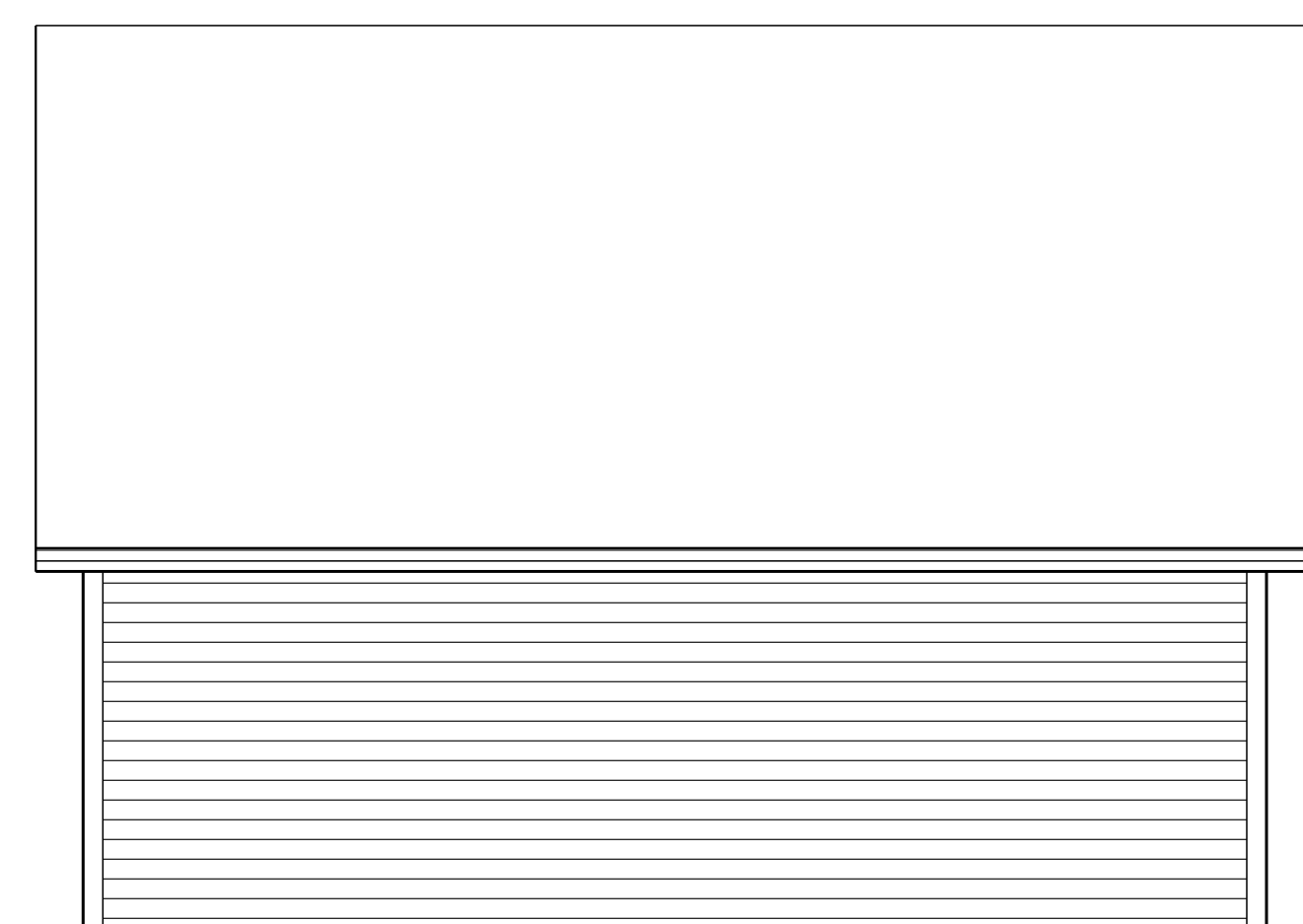
ASBUILT
 SOUTH ELEVATION
 SCALE: 1/8" = 1'-0"

ASBUILT
 EAST ELEVATION
 SCALE: 1/8" = 1'-0"

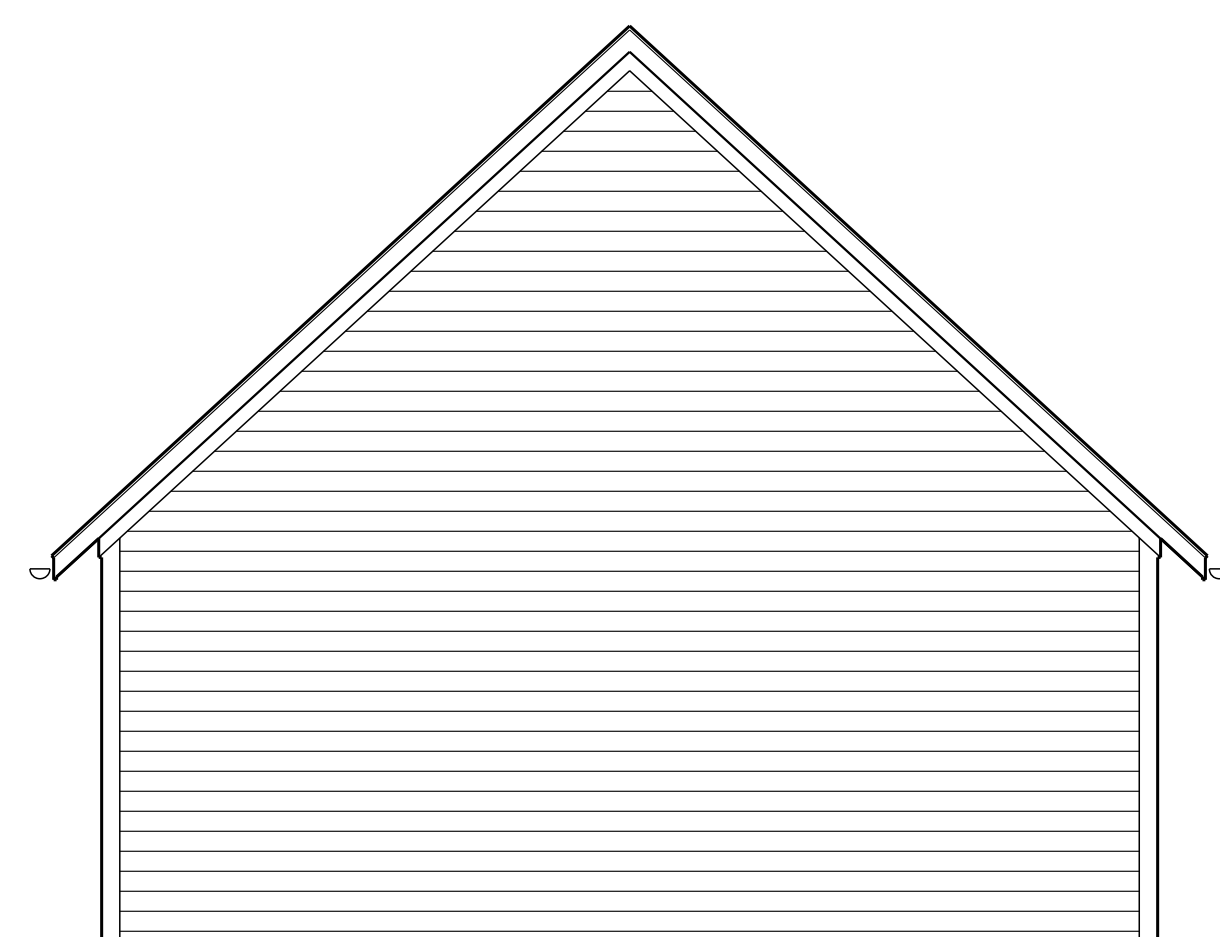


PROPOSED
 SOUTH ELEVATION
 SCALE: 1/8" = 1'-0"

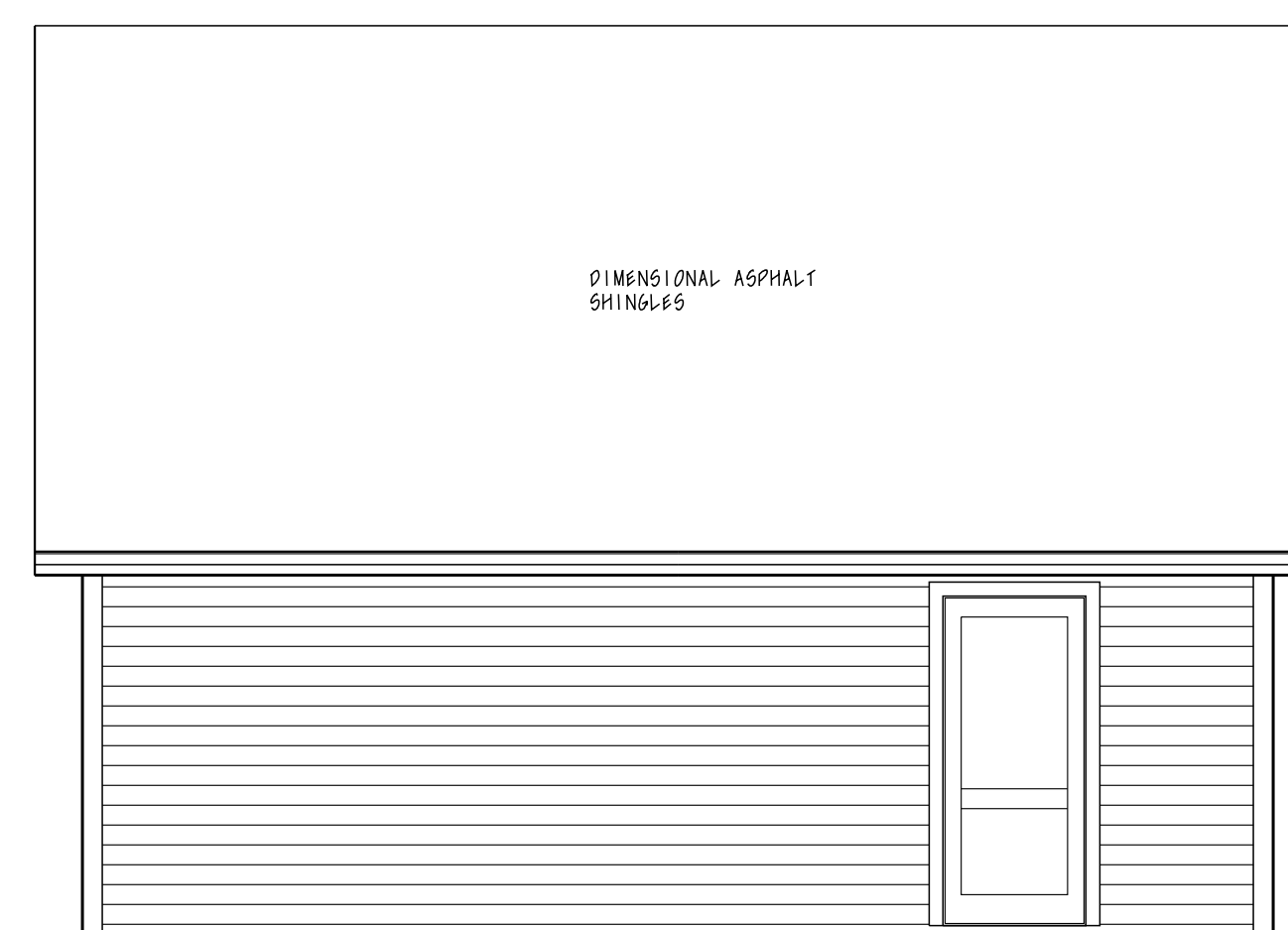
PROPOSED
 EAST ELEVATION
 SCALE: 1/8" = 1'-0"



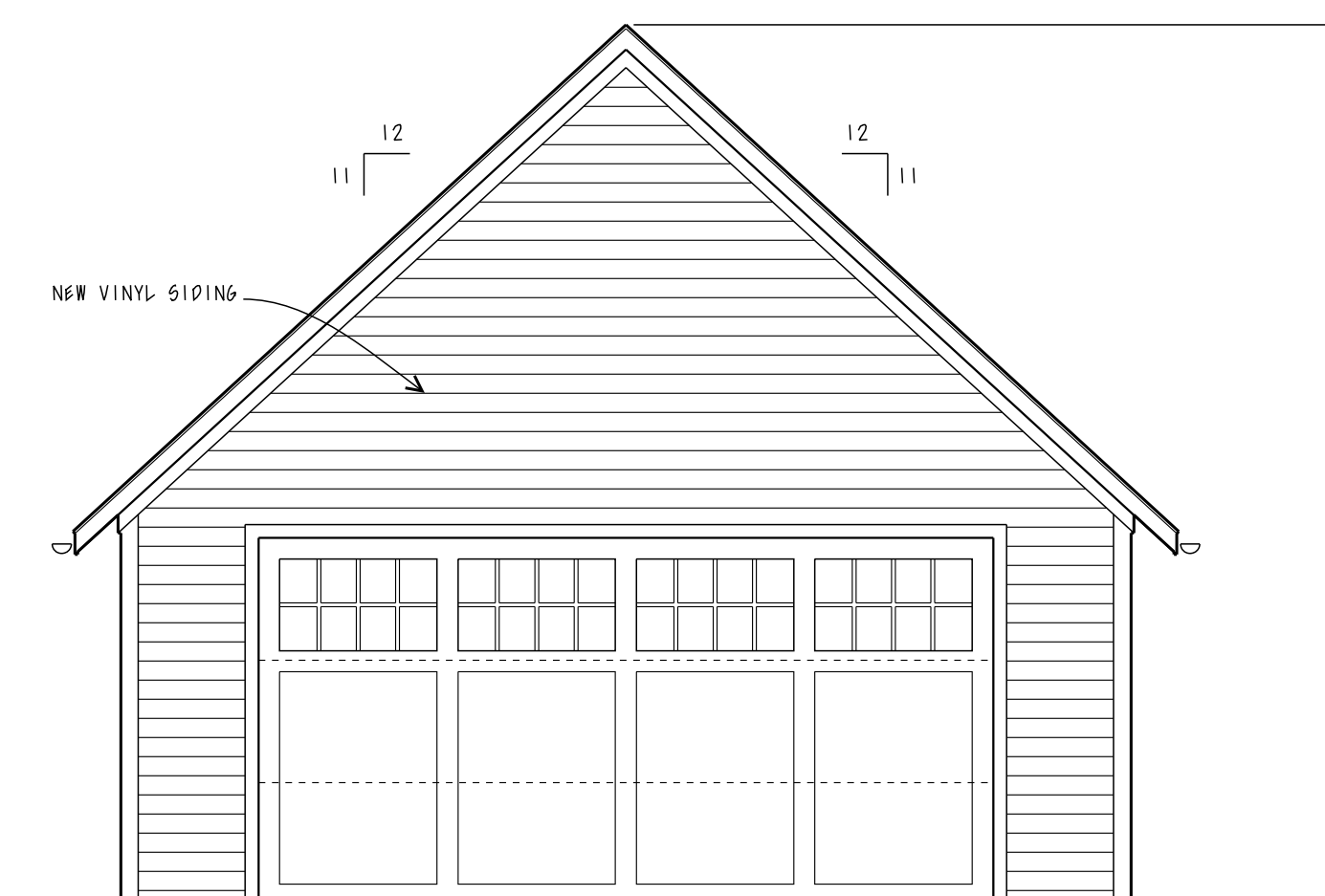
PROPOSED
 NORTH ELEVATION
 SCALE: 1/8" = 1'-0"



PROPOSED
 WEST ELEVATION
 SCALE: 1/8" = 1'-0"



PROPOSED
 SOUTH ELEVATION
 SCALE: 1/8" = 1'-0"



PROPOSED
 EAST ELEVATION
 SCALE: 1/8" = 1'-0"