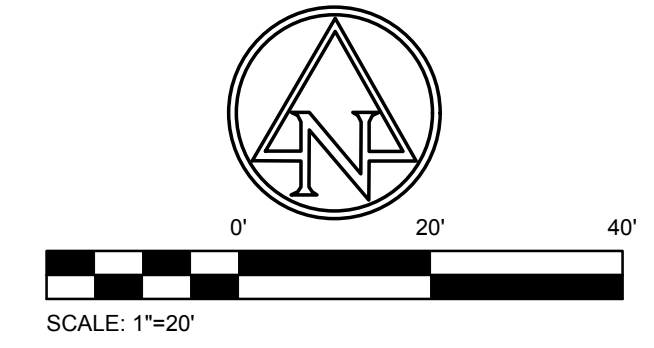
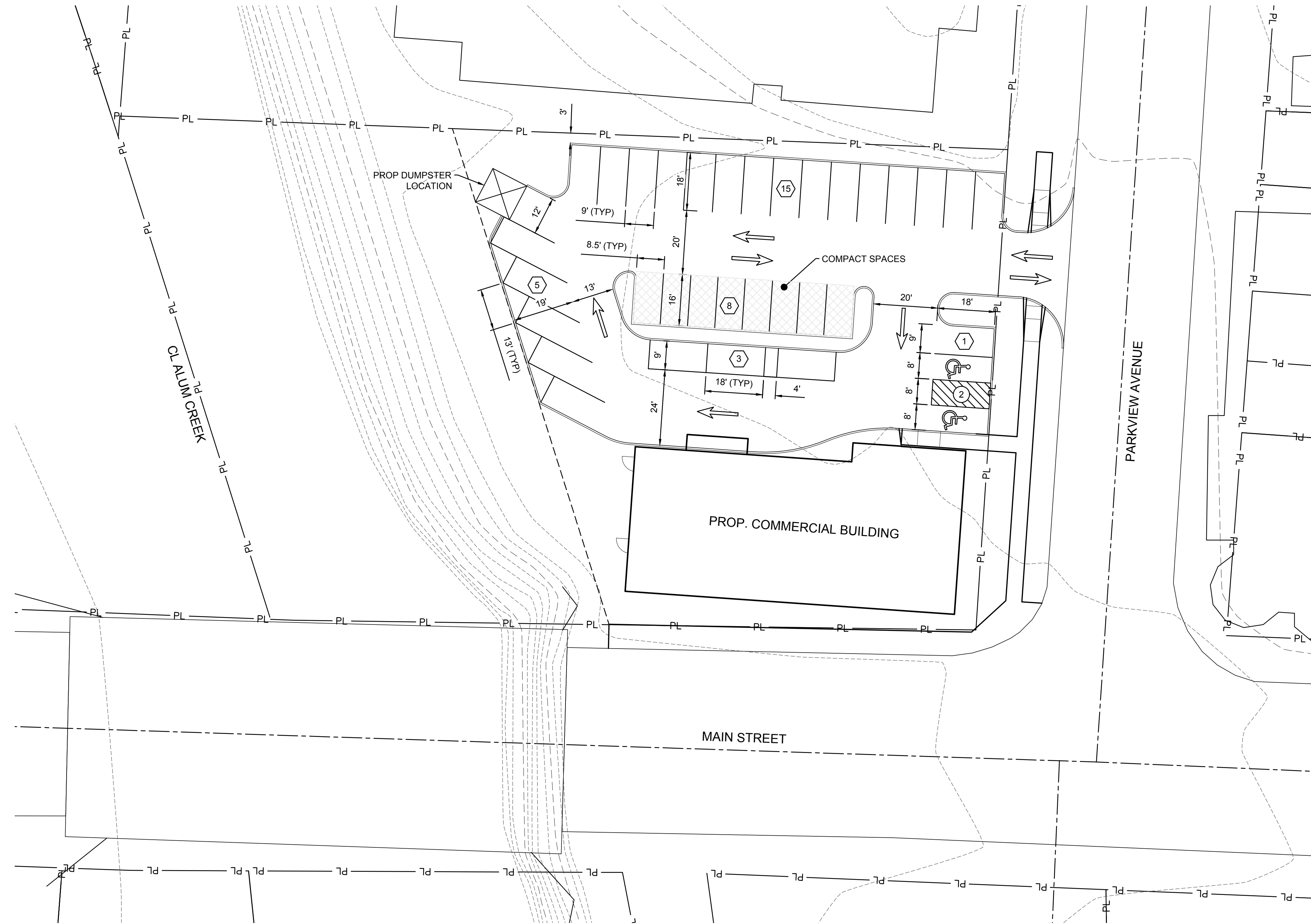


PLOT SCALE: 1:1 EDIT DATE: 9/25/18 - 8:01 AM EDITED BY: JRPERRY DRAWING FILE: C:\2018\006000 DRAWINGS\CIVIL\EXHIBITS\2018-09-21 GIS EXHIBIT\2018.00600 BEXLEY BANK GIS EXHIBIT.DWG



SITE LEGEND

- PL — PROPERTY LINE
- R/W — RIGHT-OF-WAY
- (X) PARKING STALL COUNT
- (X) ADA PARKING STALL COUNT
- STRAIGHT CURB
- CURB AND GUTTER
- LIGHT POLE (BY OTHERS)
- x FENCE
- ▭ PARKING BLOCK
- SIGN
- CONCRETE BOLLARD
- HEAVY DUTY ASPHALT PAVEMENT
- STANDARD DUTY ASPHALT PAVEMENT
- LIGHT DUTY ASPHALT PAVEMENT
- HEAVY DUTY CONCRETE
- CONCRETE WALK
- GRAVEL PATH
- CO CLEAN OUT
- ▨ CATCH BASIN
- HEADWALL
- SANITARY MANHOLE
- ⊕ FIRE HYDRANT
- FDC FIRE DEPARTMENT CONNECTION
- ➔ PAVEMENT MARKINGS

PARKING DATA TABLE

REGULAR SPACES:	24
COMPACT SPACES:	8 (23.5%)
ADA ACCESSIBLE SPACES:	2
TOTAL PARKING SPACES:	34



LAYOUT EXHIBIT
FOR
BEXLEY BANK
BEXLEY, FRANKLIN COUNTY, OHIO

REVISIONS	DATE	SHEET NO.	DESCRIPTION	APPROVED	DATE

DATE:	9/25/2018
DRAWN BY:	JRP
CHECKED BY:	OSD
JOB NUMBER:	2018.00600

EX1