



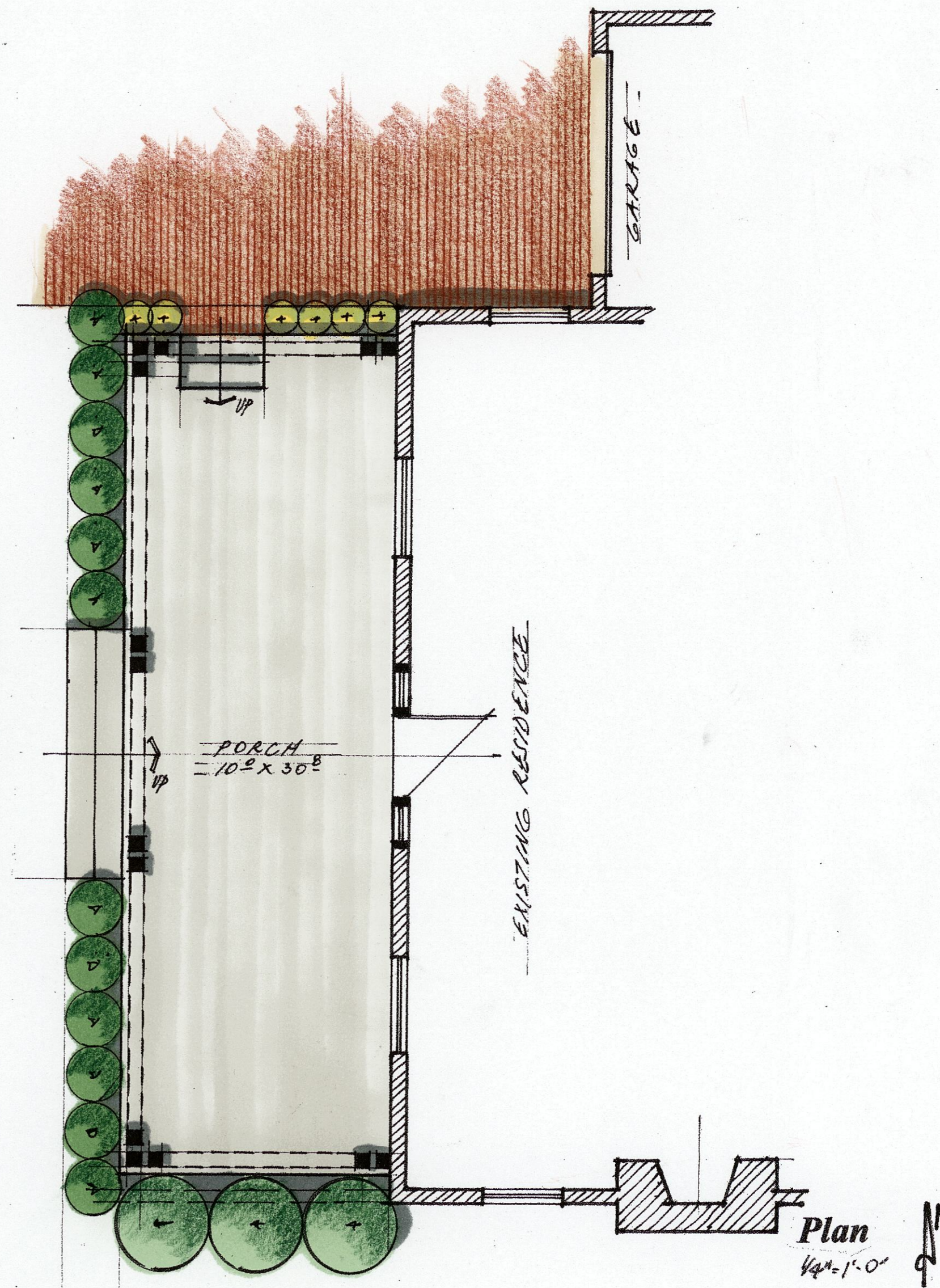
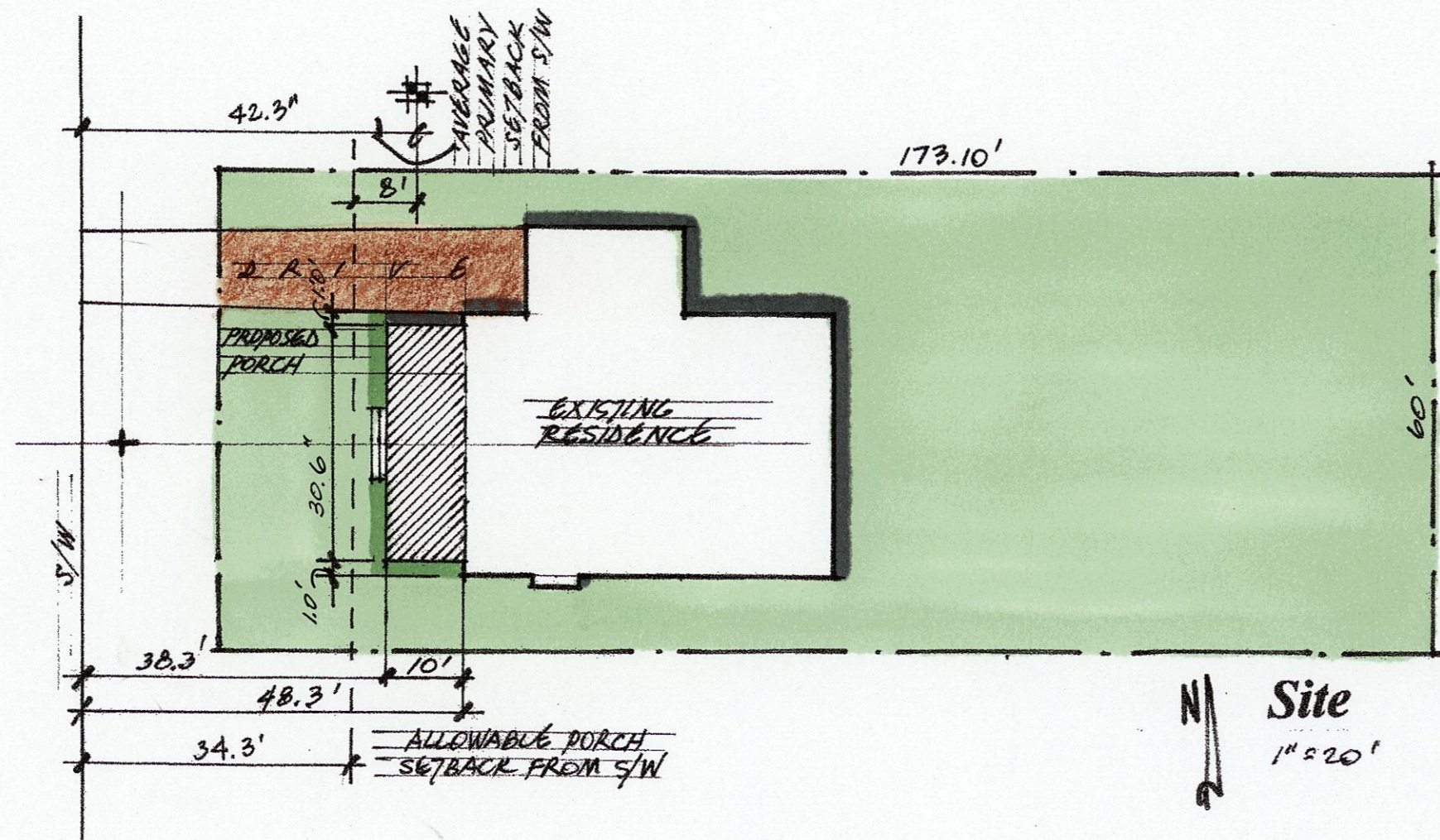
Residential Design
 LLC
 Gravelle Mosca Residence
 136 North Roosevelt Avenue
 Bexley, Ohio
 September 10, 2020

*all measurements were taken from the east side of the existing sidewalk.

House #	House setback from s/w
126	53'-0"
136	48'-4"
146	45'-4"
156	42'-0"
162	42'-0"
170	42'-0"
176	42'-0"
180	42'-0"
190	41'-0"
198	41'-0"
208	41'-0"
216	41'-8"
220	40'-0"
230	39'-0"
236	39'-0"
242	39'-0"
average	42'-4"

front porch setback allowed 34'-4"

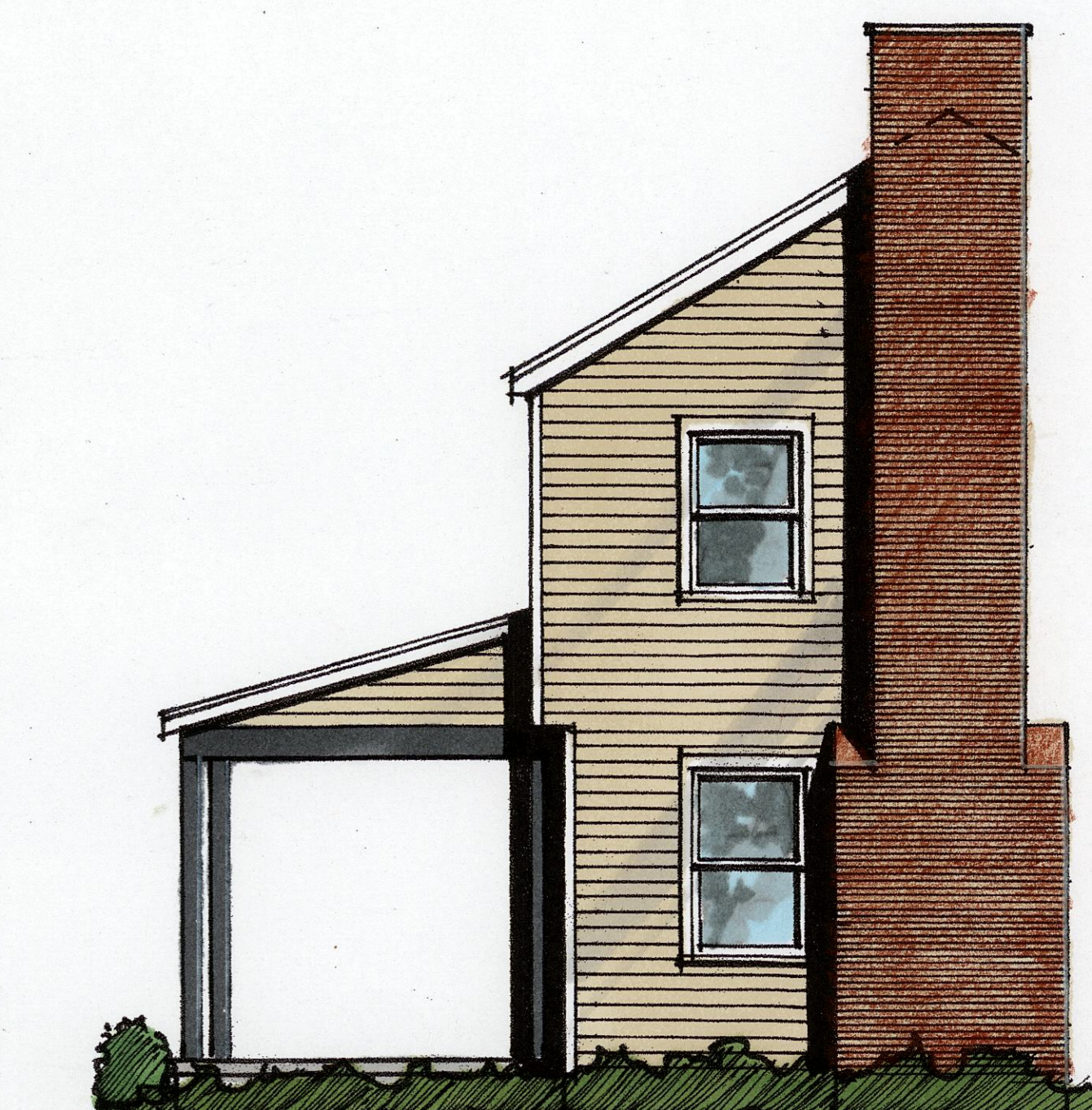
proposed porch setback 38'-4"



North Elevation
 1/4"=1'-0"



West Elevation
 1/4"=1'-0"



South Elevation
 1/4"=1'-0"