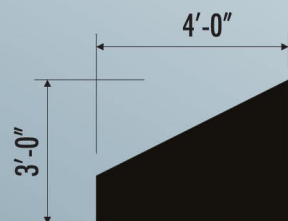


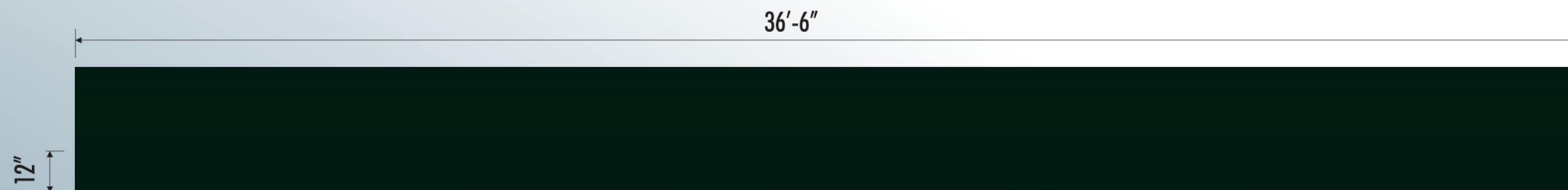
#S1-37852: FLUSH MOUNTED PVC LOGO AND LETTERS

SCALE: 1/2" = 1'-0"

- LOGO: 1/2" THICK WHITE PVC WITH DIGITALLY PRINTED VINYL OVERLAY.
- LETTERING: 1/2" THICK WHITE PVC PAINTED PMS 281 BLUE.



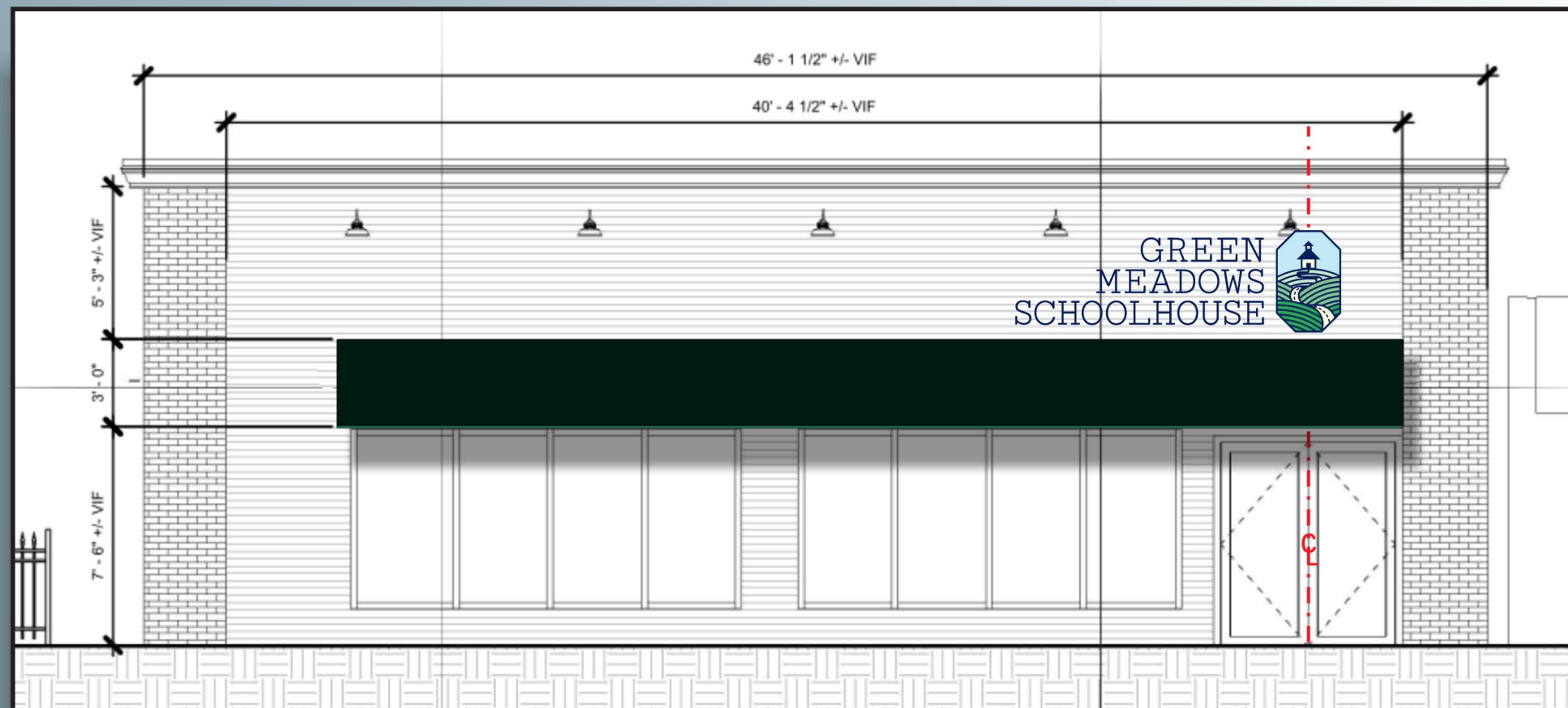
SIDE VIEW



#S1-37852: NEW NON-ILLUMINATED AWNING

SCALE: 1/4" = 1'-0"

- AWNING: 1" X 1" X 1/8" WALL ALUMINUM TUBE FRAMEWORK COVERED WITH SUNBRELLA FABRIC - ERIN GREEN 4600



PROPOSED CONCEPTUAL: SCALE: 3/16" = 1'-0"



Proudly Serving Central Ohio Since 1954

1640 Harmon Ave Columbus, Ohio, 43223
 (614) 444-3333 (FAX) 444-3026
 www.danitesign.com

UL LISTED via STANDARD UL48
 FILE NO: E60042 DaNITE SIGN CO.

For electrical illuminated signs. For non-illuminated signs, UL does not apply.

COLORS

- DIGITALLY PRINTED VINYL
- PMS 281 BLUE
- SUNBRELLA FABRIC: ERIN GREEN 4600

APPROVED-CUSTOMER DATE



JOB NAME GREEN MEADOWS SCHOOLHOUSE #S1-37852
 STREET 528 NORTH CASSADY AVE.
 CITY, STATE BEXLEY, OH
 SIGN TYPE PVC LETTERS AND NEW AWNING

DATE 12/20/19 REV. DATE:
 FILE NAME GREEN MEADOWS SCHOOLHOUSE.CDR
 DIRECTORY THAD > 2019 > G

SCALE AS NOTED SALE SC DESIGNER TK

This project is an original unpublished design concept protected by copyright laws of the United States of America. Prior to sale or paid design fees, all visual materials, specifications, annexes and revisions remain the exclusive property of DaNite Sign Company. The use of any part herein to manufacture, sell or adapt this concept to other mediums by unauthorized parties constitutes an actionable plagiarism.