

OPTION 2



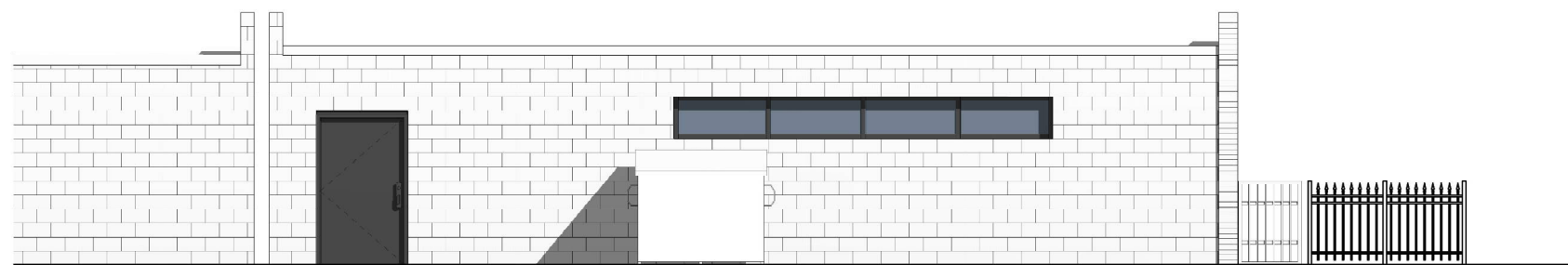
④ EXTERIOR ELEVATION - WEST
1/4" = 1'-0"



② EXTERIOR ELEVATION - NORTH
1/4" = 1'-0"



③ EXTERIOR ELEVATION - NORTH
1/4" = 1'-0"



① EXTERIOR ELEVATION - EAST
1/4" = 1'-0"

GREEN
MEADOWS
SCHOOLHOUSE

