

CASEMENT & AWNING WINDOWS

FEATURES

FRAME

A A seamless one-piece Perma-Shield® rigid vinyl frame cover is secured to the exterior of the wood frame to protect it from moisture and maintain an attractive appearance while minimizing maintenance.

B The seamless rigid vinyl frame cover extends 1 3/8" (35) around the perimeter of the unit, creating an installation flange to help seal the unit to the structure.

C Wood frame members are treated with a water-repellent preservative for long-lasting protection and performance.

D Traditional or contemporary interior trim stops are unfinished pine. Low-maintenance prefinished white, dark bronze and black** interiors are also available. Matching contemporary grilles are available for windows with contemporary stops.

SASH

E Rigid vinyl encases the entire sash, and a vinyl weld protects each sash corner for superior weathertightness. This maintains an attractive appearance and minimizes maintenance.

F Wood core members provide excellent structural stability and energy efficiency.

G Vinyl closed-cell foam weatherstrip is factory installed on the perimeter of the sash.

GLASS

H Glass spacers are available in black, stainless steel and white.

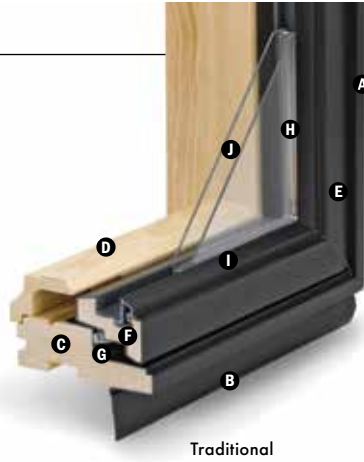
I A glazing bead and silicone provide superior weathertightness and durability.

J High-Performance glass options include:

- Low-E4® glass
- Low-E4 HeatLock® glass
- Low-E4 SmartSun™ glass
- Low-E4 SmartSun HeatLock glass
- Low-E4 Sun glass
- Low-E4 PassiveSun® HeatLock glass

Tempered and other glass options are available. Contact your Andersen supplier.

A removable translucent film helps shield the glass from damage during delivery and construction, and simplifies finishing at the job site.



Traditional



Contemporary

Patterned Glass

Patterned glass options are available. See page 11 for more details.

HARDWARE

Smooth Control Hardware System



The smooth control hardware system employs a worm gear drive for easy operation. Units with wash mode have hinges that move the sash away from the frame to provide easier glass cleaning. CXW15, CXW155, CXW16 and CXW25 sizes are not available with wash mode. Hardware style and finish must be specified. Operator handle and cover are sold separately.

Single-Action Casement Lock



On casement windows, a single-action lock easily releases all concealed locking points on the sash, while the reach-out action eliminates binding when closing. The lock handle finish matches the specified hardware finish.

*Visit andersenwindows.com/warranty for details.

**Products with dark bronze or black interiors have matching exteriors.

†These finishes are "living finishes" that will change with time and use, see limited warranty for details.

Naturally occurring variations in grain, color and texture of wood make each window one of a kind. All wood interiors are unfinished unless a finish is specified.

Printing limitations prevent exact replication of colors and finishes. See your Andersen supplier for actual color and finish samples.

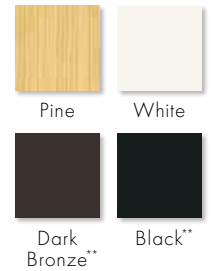
Dimensions in parentheses are in millimeters.

EXTERIORS & INTERIORS

EXTERIOR COLORS



INTERIOR OPTIONS



HARDWARE Sold Separately



CONTEMPORARY FOLDING

Black | Bright Brass
Oil Rubbed Bronze | Satin Nickel
Stone | White



TRADITIONAL FOLDING

Antique Brass | Black
Bright Brass | Distressed Bronze
Distressed Nickel | Oil Rubbed Bronze
Satin Nickel | Stone | White

Folding handles avoid interference with window treatments.



CLASSIC SERIES™

Stone | **White**



ESTATE™

Antique Brass | **Bright Brass**
Distressed Bronze | Distressed Nickel
Oil Rubbed Bronze | Satin Nickel

Bold name denotes finish shown.

HARDWARE FINISHES



Awning Sash Locks



Awning sash locks provide an added measure of security and weathertightness. Hardware style and finish options are compatible with Andersen casement windows to ensure consistency in appearance when used in combination designs.

PERFORMANCE OPTIONS

Performance Grade (PG) Upgrades

PG upgrade is available for select sizes of standard non-impact casement and awning windows, allowing these units to achieve higher performance ratings. PG ratings are more comprehensive than Design Pressure (DP) ratings for measuring product performance. For up-to-date performance information of individual products, visit andersenwindows.com. Contact your Andersen supplier for availability.

Coastal Windows

400 Series casement and awning windows are available with Stormwatch® Protection. Visit andersenwindows.com/coastal or refer to the Andersen 400 Series Coastal Product Guide for more information.



CAUTION: Painting and staining may cause damage to rigid vinyl. Andersen does not warrant the adhesion or performance of homeowner-applied paint over vinyl or other factory-coated surfaces. For vinyl painting instructions and preparation, contact your Andersen supplier. Do not paint weatherstrip. Creosote-based stains should not come in contact with Andersen products. Abrasive cleaners or solutions containing corrosive solvents should not be used on Andersen products. See page 223 for a complete list of cautions.

*Visit andersenwindows.com/warranty for details.

**TruScene insect screens let in over 25% more fresh air than standard Andersen fiberglass insect screens. Dimensions in parentheses are in millimeters.

ACCESSORIES Sold Separately

FRAME

Extension Jamb



The base jamb depth is 2 7/8" (73). Extension jambs are available in unfinished pine, maple and oak, or prefinished white, dark bronze and black. Some sizes may be veneered.

Factory-applied and non-applied extension jambs are available in 1/16" (1.5) increments between 4 9/16" (116) and 7 1/8" (181). Extension jambs can be factory applied to either three sides (stool and apron) or four sides (picture frame casing).

For overall jamb depths greater than 7 1/8" (181), interior extension jambs are available in 1/16" (1.5) increments between 7 1/8" (181) and 9" (229) for field application. They are available in 8' (2438) and 12' (3658) lineals.

Thick Replacement Extension Jambs

To help preserve original alignment of trim and paint lines in replacement situations, special 1 1/8" (29)-thick replacement extension jambs are available. Factory-applied and non-applied extension jambs are available in 1/16" (1.5) increments between 4 9/16" (116) and 7 1/8" (181). Non-applied extension jambs are available in 12' (3658) lineals. Shown on page 43. Detail on page 36.

Drywall Return Bead



A narrow or wide drywall return bead is available with unfinished pine, or prefinished white, dark bronze and black interiors. Can be ordered factory applied or in non-applied lineals. Detail on page 36.

HARDWARE

Corrosion-Resistant Components

Corrosion-resistant hinge and operator arm hardware is designed for applications in harsh and corrosive environments such as heavy industrial or coastal areas.*

Window Opening Control Device



A window opening control device is available, which limits sash travel to less than 4" (102) when the window is first opened. Available factory applied, or as a field-applied kit in black, stone and white.

Power Operator for Awning Windows



Awning windows can be ordered with an operator enhanced by PowerAssist™ technology that opens and closes the window with the touch of a button, and eliminates the need for sash locks. Easy to install, the 24-volt system features a concealed window power drive, battery backup and a moisture sensor that closes the window when it rains. It is controlled by a wall-mounted console that includes a power box, battery, touch pad and mounting bracket. A remote control is sold separately. Windows can be ordered factory prepped or as a field-applied kit. Power driver requires field installation. Available for windows up to 5' (1524) wide. Not available for windows with Stormwatch Protection or PG upgrade.

SPECIAL OPERATOR HANDLES

Available in Classic Series™ design only.

Compact Operator Handle



Specially designed for situations where window treatments interfere with handle operation. Available in a stone or white finish.

Operator Spline Cover



An operator spline cover is an attractive cap that covers the roto operator stud when the handle that controls access or operation of the window has been removed. The operator spline cover should not be used on any window designated or intended for emergency escape or rescue. Consult your local building code official for egress code requirements in your area.

Metal T-Handle



Our smallest operator handle, the metal T-handle, may make it more difficult for young children aged 5 and under to open the window. For more information on child safety, write:

Andersen Corporation
LookOut For Kids® Program
 100 Fourth Avenue North
 Bayport, MN 55003
 Call: 800-313-8889
 Email: lofk@andersencorp.com
 Website: andersenwindows.com/windowsafety

Easy-Grip Handle

A larger knob makes it easier to grip and operate. Available in a stone or white finish.



ANDERSEN® ART GLASS

Andersen art glass panels come in a variety of original patterns. For more information, see the Art Glass section starting on page 175 or visit andersenwindows.com/artglass.

INSECT SCREENS

TruScene® Insect Screens



Our TruScene insect screens let in over 25% more fresh air** and provide 50% greater clarity than conventional Andersen insect screens, all while keeping out unwanted small insects. For casement and awning windows, frames are available in white, stone, dark bronze and black, or with pine veneer frame interiors to blend with the wood interior of the window.

Conventional Insect Screens

Conventional insect screens have charcoal gray powder-coated aluminum screen mesh. Frames are available in white, stone, dark bronze and black.

GRILLES & EXTERIOR TRIM

Grilles are available in a variety of configurations and widths. See page 18 for details. Available with Andersen exterior trim. See the Exterior Trim section starting on page 177.

ALLEY
(16' R.O.W.)

50.0' FENCE

EXISTING GARAGE

EXISTING PATIO

FIRE PIT

25.0' REAR YARD SETBACK

12'-2" EXISTING

DECK

PLANTING

ADDITION
NEW SECOND FLOOR OVER
EXG. ONE-STORY

11'-6" EXISTING

8.0' SIDE YARD SETBACK

PORCH

PROPOSED ADDITION

14'-4" EXISTING

EXISTING RESIDENCE

8.0' SIDE YARD SETBACK

136.0' DRIVEWAY

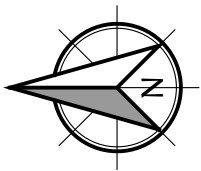
42'-7" EXISTING

30.0' FRONT YARD SETBACK

SIDEWALK

NOTATION

- = R-6
- = 6800 SF
- 35% = 2380 SF
- PORCH = 1130 SF
- = 370 SF
- = 40 SF
- 22.6% = 1540 SF
- 60% = 4080 SF
- = 1540 SF
- = 95 SF
- = 1406 SF
- = 392 SF
- = (65 SF)
- = 105 SF
- 52% = 3538 SF



THE ARCHITECT'S DRAWINGS AND OTHER WORK
ARE FOR USE SOLELY ON THIS PROJECT.
THE ARCHITECT IS THE AUTHOR, AND RESERVES
ALL RIGHTS. INFORMATION CONTAINED HEREIN
SHALL NOT BE USED WITHOUT THE EXPRESS
WRITTEN AUTHORIZATION OF THE ARCHITECT.

Date:
7 Oct 2025

Project Number:
25-015

Drawing Title:
Site Plan

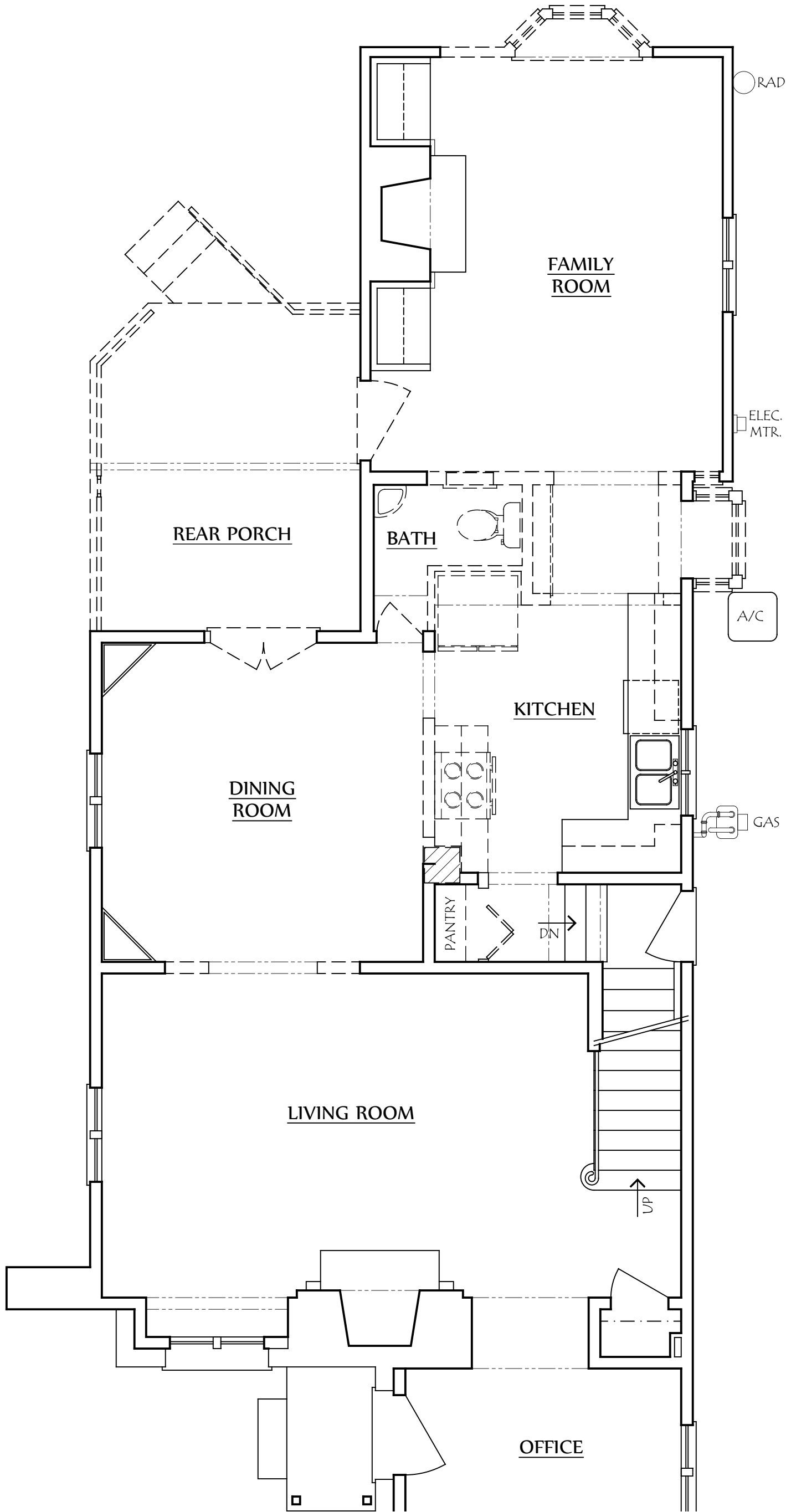
Project Name:
164 South Stanwood Rd.

Scale:
1/8" = 1'-0"

Sheet Number:
S-1



Lauerhass Architecture
RENOVATION - ADDITION - NEW HOME



COPYRIGHT©

LAUERHASS ARCHITECTURE, LLC
ALL RIGHTS RESERVED.

THE ARCHITECT'S DRAWINGS AND OTHER WORK
ARE FOR USE SOLELY ON THIS PROJECT.
THE ARCHITECT IS THE AUTHOR, AND RESERVES
ALL RIGHTS. INFORMATION CONTAINED HEREIN
SHALL NOT BE USED WITHOUT THE EXPRESS
WRITTEN AUTHORIZATION OF THE ARCHITECT.

Date:
29 Sept 2025

Project Number:
25-015

Drawing Title:
First Floor Demo

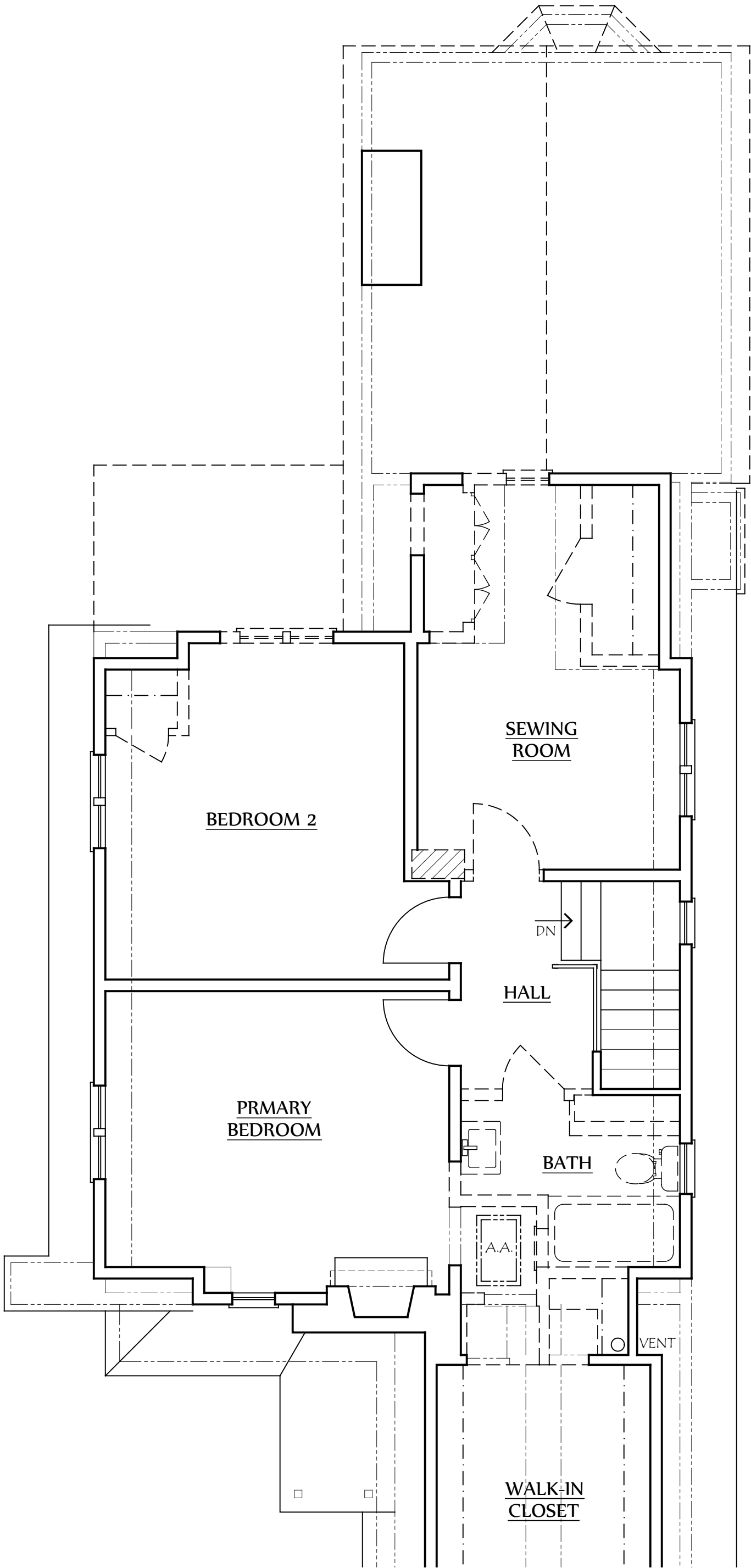
Project Name:
164 South Stanwood Rd.

Scale:
1/4" = 1'-0"

Sheet Number:
D-1



Lauerhass Architecture
RENOVATION - ADDITION - NEW HOME



COPYRIGHT©

LAUERHASS ARCHITECTURE, LLC
ALL RIGHTS RESERVED.

THE ARCHITECT'S DRAWINGS AND OTHER WORK
ARE FOR USE SOLELY ON THIS PROJECT.
THE ARCHITECT IS THE AUTHOR, AND RESERVES
ALL RIGHTS. INFORMATION CONTAINED HEREIN
SHALL NOT BE USED WITHOUT THE EXPRESS
WRITTEN AUTHORIZATION OF THE ARCHITECT.

Date:
29 Sept 2025

Project Number:
25-015

Drawing Title:
Second Floor Demo

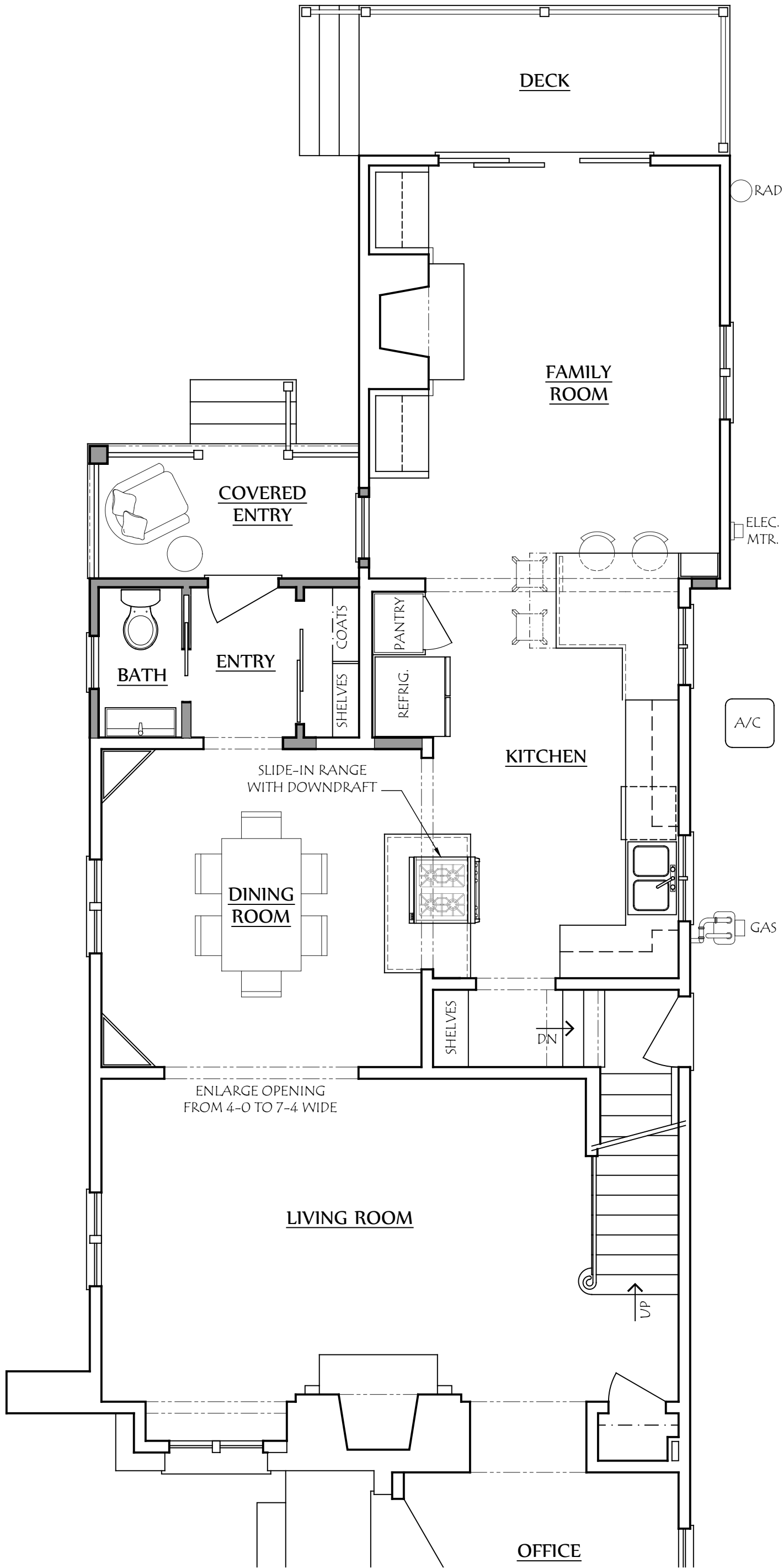
Project Name:
164 South Stanwood Rd.

Scale:
1/4" = 1'-0"

Sheet Number:
D-2



Lauerhass Architecture
RENOVATION - ADDITION - NEW HOME



COPYRIGHT©

LAUERHASS ARCHITECTURE, LLC
ALL RIGHTS RESERVED.

THE ARCHITECT'S DRAWINGS AND OTHER WORK
ARE FOR USE SOLELY ON THIS PROJECT.
THE ARCHITECT IS THE AUTHOR, AND RESERVES
ALL RIGHTS. INFORMATION CONTAINED HEREIN
SHALL NOT BE USED WITHOUT THE EXPRESS
WRITTEN AUTHORIZATION OF THE ARCHITECT.

Date:
29 Sept 2025

Project Number:
25-015

Drawing Title:
First Floor Plan

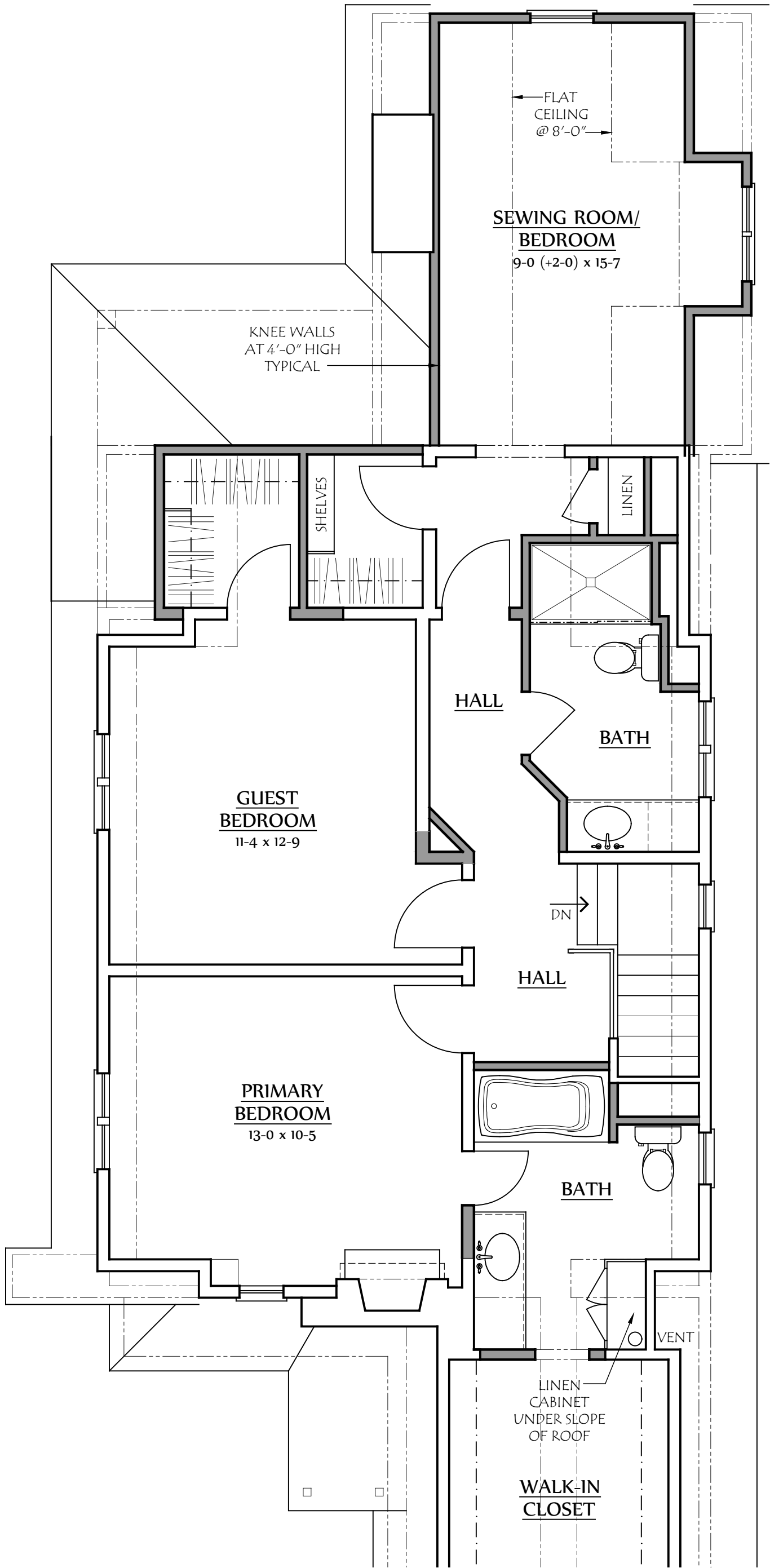
Project Name:
164 South Stanwood Rd.

Scale:
1/4" = 1'-0"

Sheet Number:
A-2



Lauerhass Architecture
RENOVATION - ADDITION - NEW HOME



COPYRIGHT©

LAUERHASS ARCHITECTURE, LLC
ALL RIGHTS RESERVED.

THE ARCHITECT'S DRAWINGS AND OTHER WORK
ARE FOR USE SOLELY ON THIS PROJECT.
THE ARCHITECT IS THE AUTHOR, AND RESERVES
ALL RIGHTS. INFORMATION CONTAINED HEREIN
SHALL NOT BE USED WITHOUT THE EXPRESS
WRITTEN AUTHORIZATION OF THE ARCHITECT.

Date:
29 Sept 2025

Project Number:
25-015

Drawing Title:
Second Floor Plan

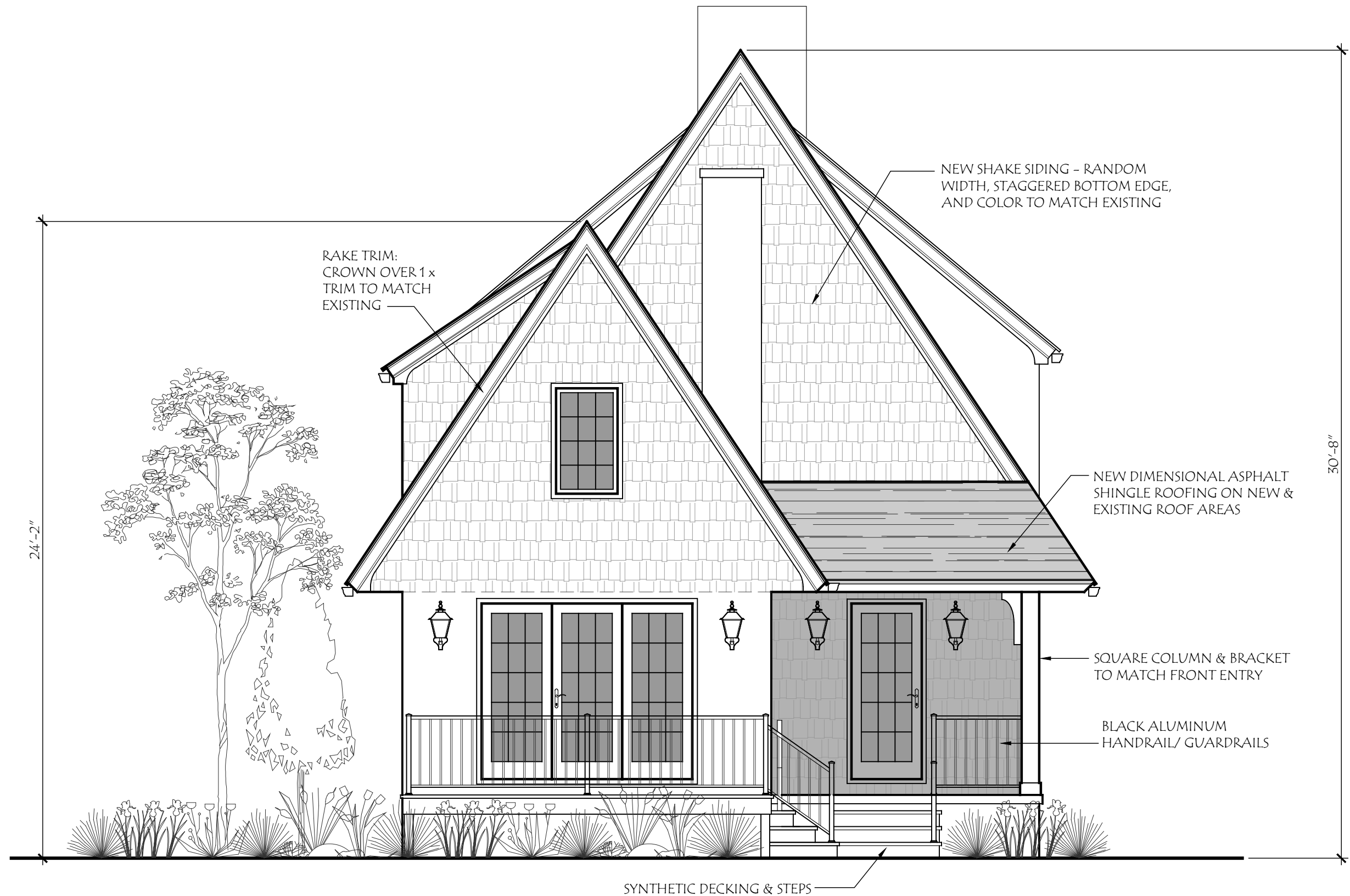
Project Name:
164 South Stanwood Rd.

Scale:
1/4" = 1'-0"

Sheet Number:
A-3



Lauerhass Architecture
RENOVATION - ADDITION - NEW HOME



COPYRIGHT©

LAUERHASS ARCHITECTURE, LLC
ALL RIGHTS RESERVED.

THE ARCHITECT'S DRAWINGS AND OTHER WORK
ARE FOR USE SOLELY ON THIS PROJECT.
THE ARCHITECT IS THE AUTHOR, AND RESERVES
ALL RIGHTS. INFORMATION CONTAINED HEREIN
SHALL NOT BE USED WITHOUT THE EXPRESS
WRITTEN AUTHORIZATION OF THE ARCHITECT.

Date:
29 Sept 2025

Project Number:
25-015

Drawing Title:
East Elevation

Project Name:
164 South Stanwood Rd.

Scale:
1/4" = 1'-0"

Sheet Number:
A-4



Lauerhass Architecture
RENOVATION - ADDITION - NEW HOME



COPYRIGHT©

LAUERHASS ARCHITECTURE, LLC
ALL RIGHTS RESERVED.

THE ARCHITECT'S DRAWINGS AND OTHER WORK
ARE FOR USE SOLELY ON THIS PROJECT.
THE ARCHITECT IS THE AUTHOR, AND RESERVES
ALL RIGHTS. INFORMATION CONTAINED HEREIN
SHALL NOT BE USED WITHOUT THE EXPRESS
WRITTEN AUTHORIZATION OF THE ARCHITECT.

Date:
29 Sept 2025

Project Number:
25-015

Drawing Title:
North Elevation

Project Name:
164 South Stanwood Rd.

Scale:
1/4" = 1'-0"

Sheet Number:
A-5



Lauerhass Architecture

RENOVATION - ADDITION - NEW HOME



COPYRIGHT©

LAUERHASS ARCHITECTURE, LLC
ALL RIGHTS RESERVED.

THE ARCHITECT'S DRAWINGS AND OTHER WORK
ARE FOR USE SOLELY ON THIS PROJECT.
THE ARCHITECT IS THE AUTHOR, AND RESERVES
ALL RIGHTS. INFORMATION CONTAINED HEREIN
SHALL NOT BE USED WITHOUT THE EXPRESS
WRITTEN AUTHORIZATION OF THE ARCHITECT.

Date:
29 Sept 2025

Project Number:
25-015

Drawing Title:
South Elevation

Project Name:
164 South Stanwood Rd.

Scale:
1/4" = 1'-0"

Sheet Number:
A-6



Lauerhass Architecture

RENOVATION - ADDITION - NEW HOME



SOUTH ELEVATION



NORTH ELEVATION



EAST ELEVATION



WEST ELEVATION

COPYRIGHT©

LAUERHASS ARCHITECTURE, LLC
ALL RIGHTS RESERVED.

THE ARCHITECT'S DRAWINGS AND OTHER WORK
ARE FOR USE SOLELY ON THIS PROJECT.
THE ARCHITECT IS THE AUTHOR, AND RESERVES
ALL RIGHTS. INFORMATION CONTAINED HEREIN
SHALL NOT BE USED WITHOUT THE EXPRESS
WRITTEN AUTHORIZATION OF THE ARCHITECT.

Date:
7 Oct 2025

Drawing Title:
Existing Photos

Scale:
n/a

Project Number:
25-015

Project Name:
164 South Stanwood Rd.

Sheet Number:
1 of 1



Lauerhass Architecture
RENOVATION - ADDITION - NEW HOME