



**PERMISSION FOR AGENT TO REPRESENT OWNER**

09.22.25

**CITY OF BEXLEY**  
**BUILDING & ZONING DEPARTMENT**  
2242 E MAIN STREET  
BEXLEY, OH 43209

**RE: COHEN RESIDENCE**  
2750 FAIR AVE  
BEXLEY OH, 43209

As owner of the above referenced property, I give my permission for Valerie Halas of Valerie Halas Design to apply on my behalf to the City of Bexley Architectural Review Board. I also agree to any conditions of approval that result as a part of the approval process.

Sincerely,

-----  
**SIGNATURE**

-----  
**DATE**

INTERIOR RENOVATIONS + ADDITIONS

WWW.VALERIEHALASDESIGN.COM

VALERIEHALASDESIGN@YAHOO.COM

614.400.1460

# VALERIE HALAS

*design*

INTERIOR RENOVATIONS + ADDITIONS

[WWW.VALERIEHALASDESIGN.COM](http://WWW.VALERIEHALASDESIGN.COM)

[VALERIEHALASDESIGN@YAHOO.COM](mailto:VALERIEHALASDESIGN@YAHOO.COM)

614.400.1460



ELEVATE  
MARVIN ELEVATE® COLLECTION





# THE MARVIN PORTFOLIO

The Marvin portfolio consists of five product lines organized into three distinct collections defined by the degree of design detail and customization opportunities.

Marvin windows and doors offer exceptional performance, energy efficiency, low maintenance, and quality you can see, feel, and touch to help bring your vision to life.



## ULTIMATE

The result of relentless refinement, Ultimate offers nearly endless design possibilities.



## MODERN

Modern leverages an innovative modular system and proprietary High-Density Fiberglass for striking modern aesthetics and optimum performance.



## COASTLINE

Coastline meets the advanced performance demands of high velocity hurricane zones while showcasing a refined beauty.



## ELEVATE

Elevate® provides curated products featuring durable, proprietary Ultrex® fiberglass exteriors and natural wood interiors.



## ESSENTIAL

Essential® offers durable, proprietary Ultrex® fiberglass interiors and exteriors, clean lines, and streamlined offerings.

	MARVIN SIGNATURE® COLLECTION			MARVIN ELEVATE® COLLECTION	MARVIN ESSENTIAL™ COLLECTION
INTERIORS	WOOD 6 species options + custom 2 painted or primed options 6 stains + clear coat	EXTRUDED ALUMINUM 5 color options	EXTRUDED ALUMINUM 6 solid colors, 4 woodgrain finishes	WOOD Bare pine, painted Designer Black, painted White, or clear coat	FIBERGLASS 4 color options
EXTERIORS	EXTRUDED ALUMINUM 19 colors + custom or WOOD 3 species + custom	HIGH-DENSITY FIBERGLASS 5 color options	EXTRUDED ALUMINUM 6 solid colors, 4 woodgrain finishes	FIBERGLASS 6 color options	FIBERGLASS 6 color options
SIZING	Standard + custom sizing for replacement, remodeling, or new construction	Fully customizable sizing for remodeling or new construction	Custom sizing for replacement, remodeling, or new construction	Standard + custom sizing for replacement, remodeling, or new construction	Standard + custom sizing for replacement, remodeling, or new construction
HARDWARE	Extensive selection including Marvin Gallery Hardware	Minimalist hardware for authentic modern design. Available in 5 finish options with 2 door handle styles.	Available in multiple styles, sizes, and finishes to complement the window + door aesthetics	Available in 6 finish options with 2 door handle styles	Available in 6 finish options with 1 door handle style
COASTAL + WATERFRONT	Hurricane Impact Zones 3 and 4, + PG 50 Products	Corrosion-resistant. High-Density Fiberglass frame and stainless steel fasteners are tolerant to salt and water.	All products rated for High Velocity Hurricane Zone (IZ4)	Hurricane Impact Zone 3, + PG 50 Products	



Marvin Elevate® collection

## THE PERFECT BALANCE OF BEAUTY AND STRENGTH

Marvin Elevate products provide the ideal blend of remarkable design and superior performance through a curated collection of the most popular products and options, warm wood interiors, and high-quality Ultrex® fiberglass exteriors that perform even in the harshest climates.

### About Us

At Marvin, we're driven to imagine and create better ways of living, helping people feel happier and healthier inside their homes. We believe that our work isn't just about designing better windows and doors—it's about opening new possibilities for the people who use them.

CASEMENT WINDOWS WITH SIMULATED CHECKRAILS AND GRILLES-BETWEEN-THE-GLASS  
IN DESIGNER BLACK WITH MATTE BLACK HARDWARE





INSWING FRENCH DOOR WITH MATTE BLACK HARDWARE

# TABLE OF CONTENTS

- 4 MARVIN ELEVATE COLLECTION
- 8 WHY MATERIALS MATTER
- 10 ENERGY EFFICIENCY
- 12 DESIGNED WITH PROS IN MIND
- 14 **WINDOWS**
- 16 CASEMENT + AWNING
- 18 DOUBLE HUNG
- 20 GLIDER
- 22 PICTURE
- 24 BAY + BOW
- 26 ROUND TOP + SPECIALTY SHAPES
- 28 **DOORS**
- 30 BI-FOLD DOOR
- 32 SLIDING PATIO DOOR
- 34 SLIDING FRENCH DOOR
- 36 INSWING FRENCH DOOR
- 38 OUTSWING FRENCH DOOR
- 40 **PRODUCT OPTIONS**
- 42 INSTALLATION ACCESSORIES
- 43 EXTERIOR TRIM
- 44 DESIGN OPTIONS
- 46 HARDWARE STYLES
- 48 WINDOW SAFETY



# WHY MATERIALS MATTER

## THE MARVIN MATERIALS DIFFERENCE: ULTREX® FIBERGLASS

Choosing the right materials for windows and doors is important when it comes to long-term appearance and performance. Ultrex, an innovative fiberglass material pioneered by Marvin over 25 years ago, was one of the first premium composites on the market. However, not all composites are created equal.

Some companies use materials with fundamentally different properties and performance values to produce a composite material. But, Ultrex is different. High density woven fibers bound by a thermally-set resin makes Ultrex more resistant to pressure and temperature than vinyl-based composites. With such different materials grouped in the composites category, it becomes important to know what sets them apart.



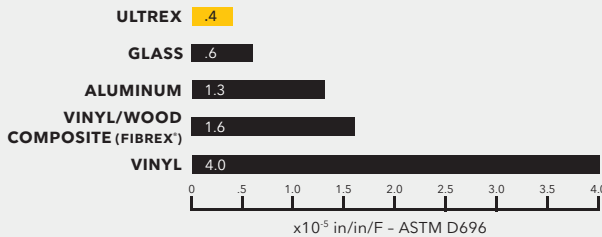
## TEMPERATURES MAY FLUCTUATE, BUT ULTREX FIBERGLASS WON'T

Ultrex expands and contracts at virtually the same rate as glass, so it works with glass rather than against it. This means seals aren't as prone to leaking, and windows aren't subjected to sagging issues like other composites.

This is especially true when compared to vinyl, which can distort in extreme heat and crack in fluctuating temperatures. Ultrex resists distortion even at temperatures up to 285°F. Rapid temperature change doesn't phase Ultrex. From -30°F to 70°F, a 6-foot stile changes less than 1/32 inch in length.

### EXPANSION MEASUREMENT

Ultrex expands and contracts at virtually the same rate as glass.

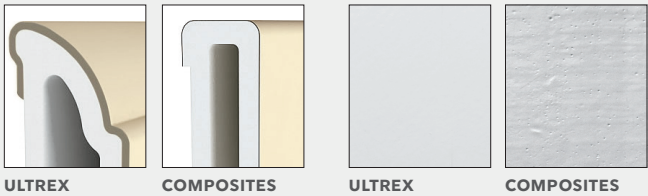


## INDUSTRY'S BEST FIBERGLASS FINISH FOR LASTING BEAUTY

Ultrex is the first fiberglass finish to be verified to AAMA's 624 voluntary finish specifications for fiber reinforced thermoset profiles (fiberglass).

Windows and doors made with Ultrex resist scratches, dings, and marring more than vinyl. Our proprietary, mechanically bonded acrylic finish is up to three times thicker than painted competitive finishes, and it resists UV degradation up to five times longer than vinyl—even on dark colors.

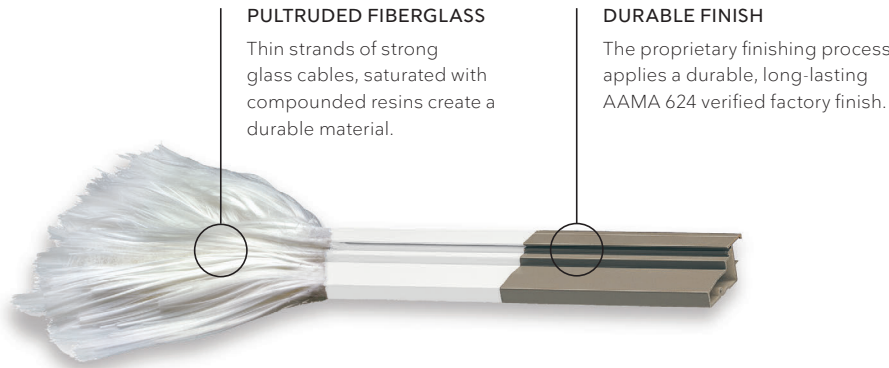
### ACRYLIC CAP



## STRENGTH AND STABILITY OF ULTREX

Ultrex pultruded fiberglass has a tensile strength 8x stronger than vinyl and 3x stronger than non-fiberglass vinyl/wood composites. Windows and doors made with Ultrex bend and flex less, resist cracking and separating, and stand up better to everyday wear and tear.

The exceptional strength and stability of Ultrex eases installation and establishes a secure, long-lasting fit that stays square and true, year after year.



CASEMENT AND DIRECT GLAZE WINDOWS IN STONE WHITE



# COOLER IN SUMMER, WARMER IN WINTER

## TOP RATED ENERGY EFFICIENCY

The National Fenestration Rating Council (NFRC) defines energy performance ratings for the entire window and door industry. It rates:

- **U-factor:** How well a window keeps heat inside a building.
- **Solar heat gain:** A window's ability to block warming caused by sunlight.
- **Visible light transmittance:** How much light gets through a product.
- **Air leakage:** Heat loss and gain by air infiltration through cracks in the window assembly.

Ultrex® fiberglass is 500 times less conductive than roll form aluminum, similar to wood and PVC. It provides an insulated barrier against extreme weather temperatures, keeping homes comfortable, and reducing heating and cooling costs.

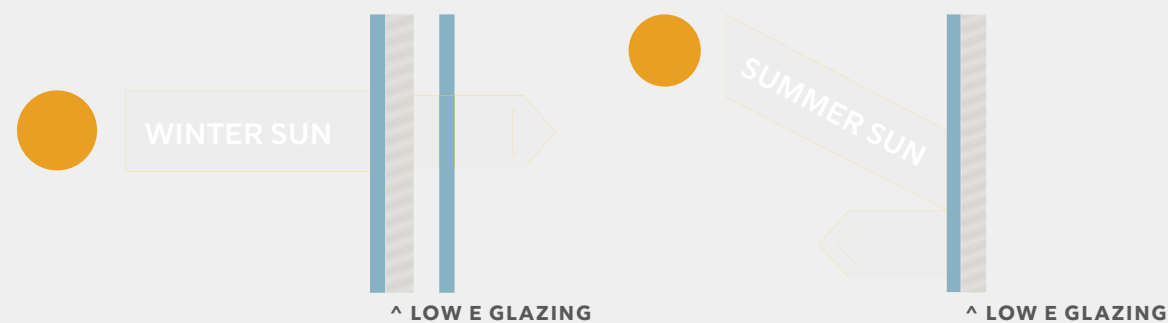
## ENERGY COST SAVINGS

Marvin was one of the first major window and door manufacturer to offer energy-efficient Low E2 glass and ENERGY STAR® certified performance on all of our standard windows and doors. Compared to non-certified products, ENERGY STAR certified windows and doors cut heating and cooling costs by 13%\*

The Elevate collection offers Triple-pane, Low E1, Low E2, Low E3, and Low E3/ERS insulated glass with argon gas, which has thermal conductivity 30% lower than that of air. It adds improved solar and thermal protection by distinguishing between visible light, damaging UV, and near-infrared rays to offer the ultimate glass performance. And provides a selection of energy-efficient solutions depending on your climate and needs.

## LOW E GLASS COATING

The Low E coating is specially designed to take advantage of the angle of the winter and summer sun. Winter sun is absorbed and conducted indoors. Summer sun is filtered and reflected back outdoors.



DOUBLE HUNG WINDOW WITH SASH LOCK + KEEPER IN WHITE

## A MORE COMFORTABLE INTERIOR, REGARDLESS OF THE SEASON

Keep heat inside during cooler weather and block the sun's rays during warmer weather with dual-pane windows and Low E coating.



## DESIGNED WITH PROS IN MIND

### PEACE OF MIND

Every project has its own unique requirements and Marvin is equipped to meet those challenges. Our unique Ultrex® fiberglass construction, available factory services, unmatched delivery, and network of dedicated service and support personnel make the Elevate collection the perfect choice—no matter the project.

### EASY TO ORDER, SIMPLE TO INSTALL

The Elevate collection offers simplified options to make the order process straightforward. Installation options and accessories make installing Marvin easier than ever.

### MARVIN HAS YOU COVERED

The Elevate collection is backed by a fully transferable 20/10 warranty: 20-year coverage on glass, and 10-year coverage on manufacturing materials and workmanship.

## CREATING VALUE AND EFFICIENCY EVERY STEP OF THE WAY

Weather-tight, solid, and durable Ultrex fiberglass means there are virtually no call-backs. Elevate window and door profiles are optimized for the maximum in performance and fit.



DOUBLE HUNG WINDOW IN STONE WHITE



Marvin Elevate® collection

# WINDOWS



CASEMENT WINDOWS IN BRONZE



## CASEMENT + AWNING



CASEMENT WINDOWS IN PAINTED WHITE WITH WHITE HARDWARE



AWNING NARROW FRAME WINDOWS WITH PINE INTERIOR AND OIL RUBBED BRONZE HARDWARE

## CASEMENT + AWNING

- Multi-point sequential locking system provides superior PG50 performance rating with single lever operation.
- Interior screen features an aluminum surround and concealed pressure mounting points for ease of operation and enhanced aesthetics.
- Operating, transom, and picture units available.
- Folding handle neatly stows out of the way. Stainless steel coastal hardware available.
- Casement available in standard and special sizes up to 3 feet wide by 6 feet high.
- Awning available in standard and special sizes up to 4 feet wide by 4 feet high.
- Coordinating Picture and Transom windows also available.
- Narrow frame option with 3 1/4 inch insert replacement frame, flat sill, and through jamb installation.



CASEMENT + AWNING



CASEMENT NARROW FRAME + AWNING NARROW FRAME



Available with IZ3  
(Excludes Narrow Frame option)



# DOUBLE HUNG



DOUBLE HUNG WINDOWS IN DESIGNER BLACK WITH MATTE BLACK HARDWARE



DOUBLE HUNG WINDOWS IN PAINTED WHITE WITH WHITE HARDWARE

## DOUBLE HUNG

- Equipped with a standard full screen; optional half screen is available.
- Tilt latches are ergonomically designed and easy to operate, making tilting and cleaning effortless.
- Sash lock provides a positive detent, reassuring the user that the window is either locked or unlocked.
- Up to PG50 performance rating.
- Equal, Cottage, and Reverse Cottage sash provide a variety of looks and checkrail heights.
- Available in standard and special sizes up to 4 feet 6 inches wide by 7 feet high.
- Coordinating Picture and Transom windows also available.
- Double Hung Insert option features  $\frac{3}{4}$  inch insert replacement frame with through jamb installation and up to PG40 performance rating.



DOUBLE HUNG



DOUBLE HUNG INSERT



Available with IZ3  
(Excludes Insert option)



## GLIDER



GLIDER WINDOWS IN PAINTED DESIGNER BLACK WITH MATTE BLACK HARDWARE



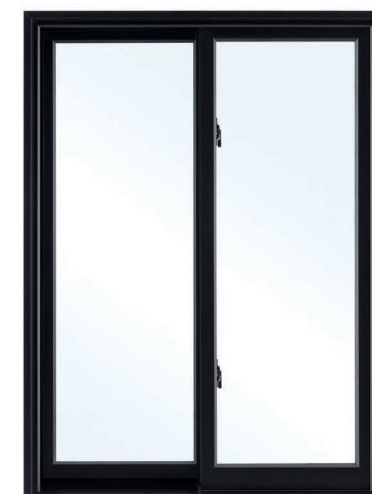
GLIDER WINDOWS IN PAINTED WHITE

## GLIDER

- Operating sash easily tilts and removes with no cords or strings to detach.
- Tilt latches are ergonomically designed and easy to operate, making tilting and cleaning effortless.
- Available in dual sash with left or right operating panel as well as triple sash with fixed center panel and two operating end panels.
- Innovative screen design for easy installation and removal.
- Up to PG30 performance rating.
- Available in standard and special sizes up to 6 feet wide by 5 feet high for dual sash and 8 feet wide by 5 feet high for triple sash.



INTERIOR



EXTERIOR



SASH LOCK + KEEPER



# PICTURE



PICTURE WINDOWS IN PAINTED BLACK DESIGNER

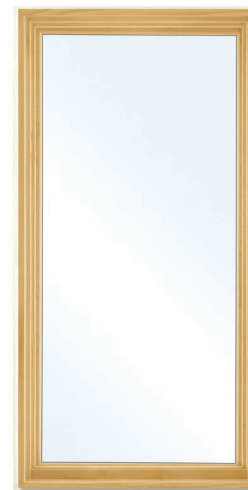
MARVIN ELEVATE® COLLECTION



DOUBLE HUNG AND PICTURE WINDOWS IN PAINTED WHITE

## PICTURE

- Fixed window available in either in-sash or direct glaze to meet various design needs.
- Both in-sash and direct glaze Picture windows available with IZ3 hurricane rating.
- Direct glaze:
  - › Glass meets the frame directly without a sash for a simple, clean profile with more glass area.
- In-sash:
  - › Designed to match profiles of operable windows in the Elevate collection.
  - › Casement Picture windows available in sizes up to 6 feet wide by 6 feet high.
  - › Double Hung Picture windows available in sizes up to 5 feet wide by 7 feet high.



INTERIOR



EXTERIOR



PICTURE WINDOW PROFILE SHOWN IN BARE PINE



Available with IZ3



## BAY + BOW



ELEVATE CASEMENT BOW WINDOW IN WHITE



ELEVATE CASEMENT BAY WINDOW IN WHITE

## BAY + BOW

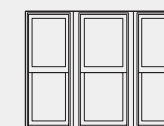
- Maximize air circulation with multiple windows.
- Combine Double Hung or Casement windows with a center Picture window.
- Customize with a variety of glass, divided lites, and hardware options.
- Rich Pine interior with a variety of finish options.
- Durable low-maintenance aluminum surround screens.
- Head and seat boards use engineered wood for superior strength, stability, and durability.
- Choose from convenient factory mulling or field mulling kits.
- Bows available in configurations up to 10 feet wide by 6 feet high.
- Bays available in configurations up to 7 feet wide by 6 feet high.



BAY INTERIOR



BAY EXTERIOR

BAY OPERATOR  
CENTER UNITBAY PICTURE  
CENTER UNIT



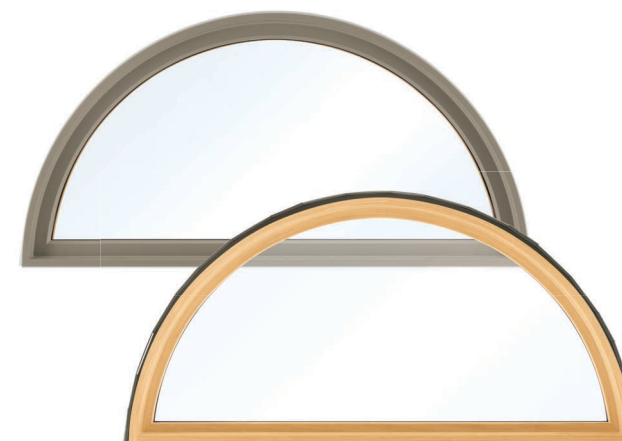
## ROUND TOP + SPECIALTY SHAPES



ELEVATE SPECIALTY SHAPES WINDOW, CASEMENT WINDOW, AND PICTURE WINDOW

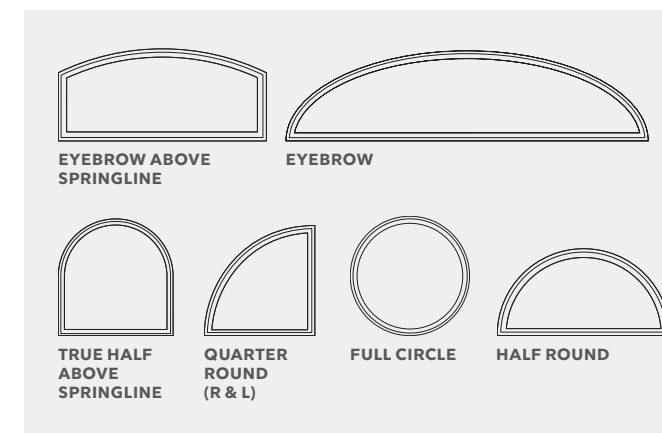
### ROUND TOP

- Extruded aluminum exterior finish.
- Available nailing fin, installation bracket, and through jamb installation.
- Perforated folding radius nailing fin provides for simple installation and proper water management.



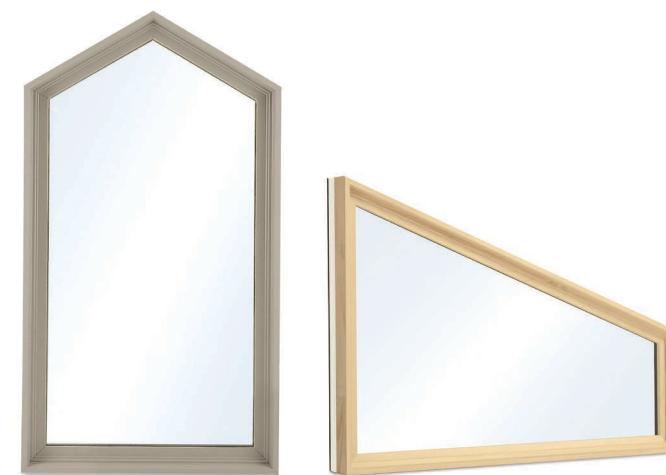
EXTERIOR + INTERIOR

- Available factory and field mulling options.
- Standard and special sizes up to 8 feet wide and up to 6 feet high depending on the shape.
- Up to PG50 performance rating.



### SPECIALTY SHAPES

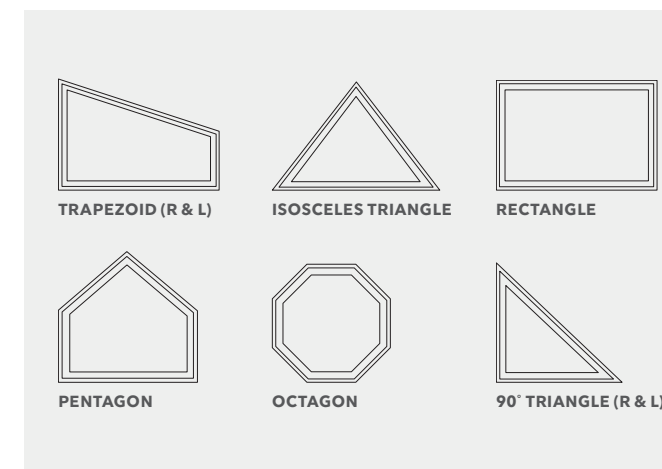
- Standard jambs of 4 1/16 inch, 6 1/16 inch, and 6 13/16 inch are available factory applied or as an extension kit.
- Consistent, fast delivery applies to even the most unique products.
- ENERGY STAR® certified and available with Low E1, Low E2, Low E3, and Low E3/ERS insulated glass.



EXTERIOR PENTAGON

INTERIOR TRAPEZOID

- Up to PG55 performance rating.
- Factory, reinforced, and field mulling kits available.
- Use as sidelights or transoms, or combine for a breathtaking wall of windows.
- Available in sizes up to 49 square feet. Longest leg may not exceed 9 feet.





Marvin Elevate® collection

# DOORS

ELEVATE SLIDING PATIO DOOR IN EBONY



# BI-FOLD DOOR



ELEVATE BI-FOLD DOOR IN EBONY



ELEVATE BI-FOLD DOOR IN WHITE

## BI-FOLD DOOR

- Available in configurations up to 7 panels and fits openings up to 22 feet wide by 8 feet high.
- Choose from 28 operating configurations.
- Carefully engineered top-hung design for effortless operation.
- Performance sill available in Beige or Bronze.
- Integrated multi-point locking system.
- Retractable pleated screen option available
- Divided lites available: Grilles-between-the-Glass (GBG) or Simulated Divided Lites (SDL).



INTERIOR



EXTERIOR



BOTTOM HINGE



## SLIDING PATIO DOOR



ELEVATE SLIDING PATIO DOOR WITH PAINTED DESIGNER BLACK INTERIOR



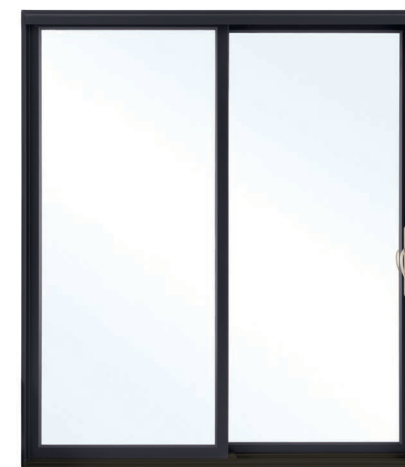
SLIDING PATIO DOOR IN EBONY WITH MATTE BLACK HARDWARE

## SLIDING PATIO DOOR

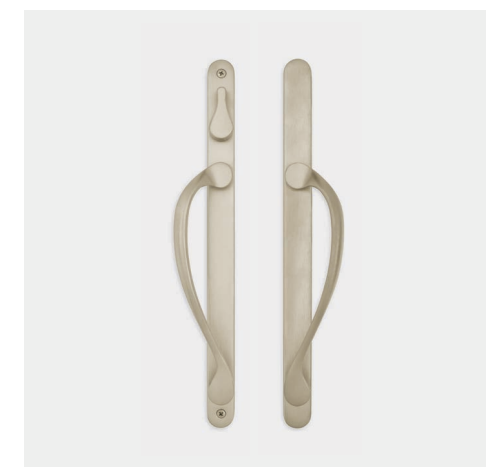
- Narrow stiles and rails achieve a contemporary styling.
- Low-maintenance Ultrex fiberglass exterior; rich pine interior with a variety of finish options.
- Precision built in special sizes in 1/4 inch increments.
- 2-, 3-, or 4-panel configurations up to approximately 16 feet wide by 8 feet high.
- Up to PG40 performance rating.
- Top hung screen operates smoothly without jamming.
- Coordinating Transom windows available.
- Bronze or Beige sill available.



INTERIOR



EXTERIOR



CAMBRIDGE HANDLES SHOWN IN SATIN NICKEL



## SLIDING FRENCH DOOR



BI-PARTING SLIDING FRENCH DOOR WITH NORTHFIELD HARDWARE IN WHITE



BI-PARTING SLIDING FRENCH DOOR IN STONE WHITE WITH NORTHFIELD HARDWARE IN OIL RUBBED BRONZE

## SLIDING FRENCH DOOR

- Wide stile and rail construction showcases the rich wood interior.
- Low-maintenance fiberglass exteriors and rich pine interiors with a variety of finish options.
- Configurations of 2-, 3-, or 4-panels, up to approximately 16 feet wide by 8 feet high.
- Up to PG40 performance rating.
- Optional PG50 performance rating on 2- and 3-panel configurations up to 9 feet wide by 8 feet high.
- Dual ball-bearing rollers for smooth operation.
- Bronze or Beige sill available.



INTERIOR



EXTERIOR



SILL DETAIL SHOWN IN BRONZE





# INSWING FRENCH DOOR



INSWING FRENCH DOOR IN PAINTED DESIGNER BLACK WITH NORTHFIELD SATIN NICKEL HARDWARE



INSWING FRENCH DOORS IN WHITE WITH CUSTOM HARDWARE

## INSWING FRENCH DOOR

- Secure and stable stainless steel multi-point locking system.
- Precision built in 1/4 inch increments.
- Available in 1-, 2-, or 3-panel configurations.\*
- Multiple configurations up to 6 feet wide by 8 feet high.
- Bronze or Beige sill available.
- PG30 performance rating standard.
- PG50 performance rating optional on 1- and 2-panel configurations.



INTERIOR



EXTERIOR



DOOR HINGE SHOWN IN SATIN NICKEL





## OUTSWING FRENCH DOOR



ELEVATE OUTSWING FRENCH DOOR IN STONE WHITE WITH MATTE BLACK NORTHFIELD HANDLE



OUTSWING FRENCH DOOR IN WHITE WITH MATTE BLACK HARDWARE

## OUTSWING FRENCH DOOR

- Low-maintenance fiberglass exteriors and rich pine interiors with a variety of finish options.
- Secure and stable stainless steel multi-point locking system.
- Precision built in 1/4 inch increments.
- Tempered, insulated glass with argon gas.
- Available in 1-, 2-, or 3-panel configurations.\*
- Multiple configurations up to 9 feet wide by 8 feet high.
- Bronze or Beige sill available.
- Up to PG40 performance rating standard.
- Up to PG50 high performance rating on 1- and 2-panel configurations.
- Available with IZ3 coastal/hurricane certification.



INTERIOR



EXTERIOR



DOOR HINGE SHOWN IN SATIN NICKEL



Marvin Elevate® collection

# PRODUCT OPTIONS



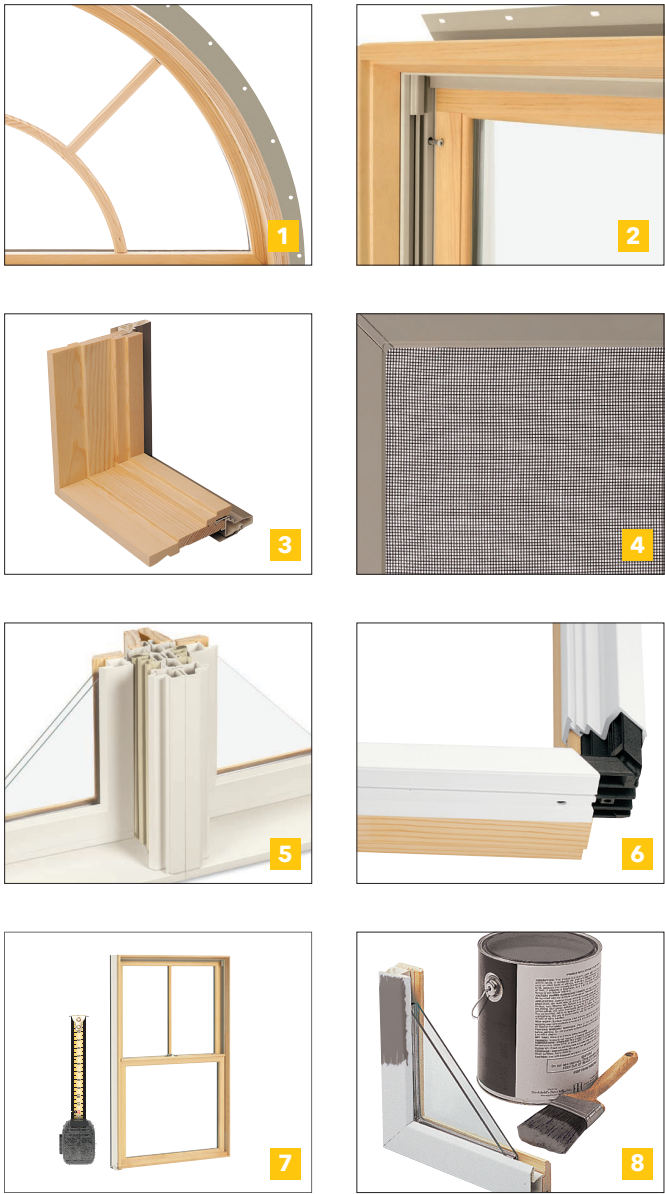
CASEMENT AND DIRECT GLAZE WINDOWS WITH SIMULATED DIVIDED LITES IN GUNMETAL



# INSTALLATION MADE SIMPLE AND EFFICIENT

## INSTALLATION OPTIONS AND ACCESSORIES

- 1. NAILING FIN**  
Pre-attached folding nailing fin and drip cap for easier installation.
- 2. THROUGH JAMB**  
Available through jamb and installation bracket options.
- 3. FACTORY-APPLIED JAMB EXTENSIONS**  
Factory-applied jamb extensions save time and labor. We supply 4 7/16", 6 7/16", and 6 13/16" jamb depth in bare wood, white, designer black, or clear interior finish.
- 4. FACTORY-INSTALLED SCREENS**  
Factory-installed screens are a standard offering with operating windows. At no extra cost, we can ship your screens separately to reduce on-site damage prior to installation.
- 5. FACTORY MULLED ASSEMBLIES**  
Available standard factory mulling, reinforced factory mulling, or field mulling kits. The reinforced mull meets AAMA 450 specifications and performs up to PG50 on standard products and up to PG55 on IZ3 rated products.
- 6. CORNER KEYS**  
Integral corner keys keeps window and door units square and corners sealed.
- 7. CUSTOM SIZES**  
Custom sizes are available on windows and doors in 1/4" increments for the perfect fit every time.
- 8. PAINTABLE ULTREX EXTERIOR**  
The Ultrex® fiberglass exterior is paintable, and it holds dark colors better than vinyl or vinyl/wood composites.



## EXTERIOR TRIM

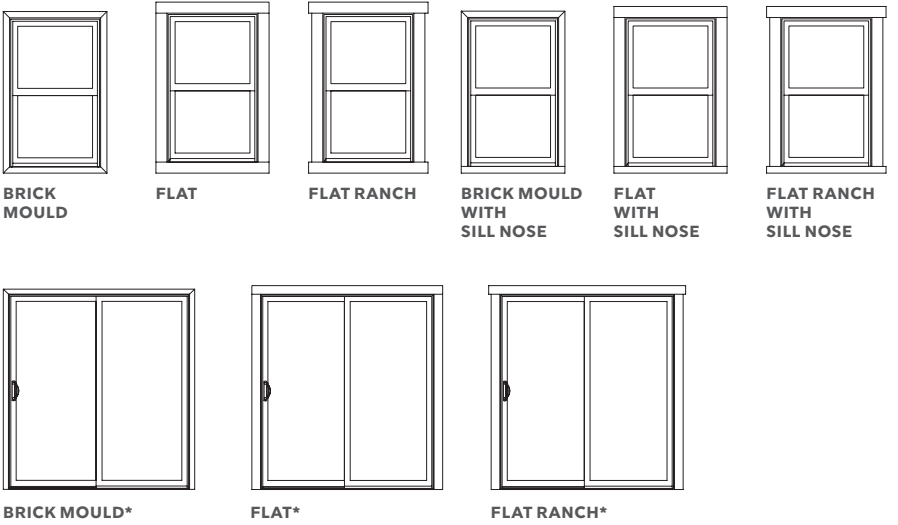
Ultrex Exterior Trim is offered with all rectangular Elevate products in all six exterior finishes. The durability, performance, and look of Marvin Elevate windows and doors can be extended to the trim.

- BRICK MOULD**  
2" Brick Mould is available with or without 2 1/8" sill nosing.
- FLAT**  
3 1/2" Flat Trim is available in Flat and Flat Ranch configurations with or without 2 1/8" sill nosing.
- SILL NOSE**  
2 1/8" Sill Nose provides authentic sill appearance.
- CONNECTION BARB**  
Barb and receiver attachment method provides for quick, secure installation.



## TRIM CONFIGURATIONS

Multiple configurations are available in lineal lengths and factory pre-cut kits in all six Elevate collection exterior colors.



\*Brick Mould, Flat, and Flat Ranch profiles are available on doors. Sill profiles are not included for door trim sets.

# DESIGN OPTIONS

## INTERIOR AND EXTERIOR FINISHES

Elevate windows and doors features rich pine interiors and a durable, strong, and fully paintable Ultrex® fiberglass exterior, featuring our AAMA-verified acrylic finish for low-maintenance and superior aesthetics. Elevate Round Tops include the extruded aluminum exterior finished in commercial-grade paint for superior resistance to fading and chalking.

### WOOD INTERIOR FINISHES

**BARE PINE**  
Wood comes bare and ready to be painted or stained

**CLEAR COAT**  
Wood is finished in the factory with a clear coat

**PAINTED WHITE**  
Factory painted

**PAINTED DESIGNER BLACK**  
Factory painted

### FIBERGLASS EXTERIOR COLORS

**STONE WHITE**

**CASHMERE**

**PEBBLE GRAY**

**BRONZE**

**GUNMETAL**

**EBONY**

## DIVIDED LITES

### GRILLES-BETWEEN-THE-GLASS (GBG)

Available in several popular lite cut options for a classic divided lite look and easy glass cleaning. Available in Stone White, Bronze, and Ebony interior and Stone White, Cashmere, Pebble Gray, Bronze, Gunmetal or Ebony exterior.\*

### SIMULATED DIVIDED LITE (SDL)

Bars permanently adhered to both sides of the glass for a more authentic look. Available with or without spacer bar and in several lite cut options.



GRILLES-BETWEEN-THE-GLASS



SIMULATED DIVIDED LITE

## GLASS OPTIONS

Glass is available with Standard Dual Pane or optional Triple Pane on select products. Available with Low E1, Low E2, Low E3, and Low E3/ERS insulated glass with argon gas.\* Options include glazing for sound abatement (STC/OITC), high altitudes, and California fire zones.

Laminated glass is also offered in products designed specifically for hurricane zones.

### DECORATIVE GLASS

**OBSCURE**

**GLUE CHIP**

**RAIN**

**REED**

**NARROW REED**

**FROST**

**BRONZE TINT**

**GRAY TINT**

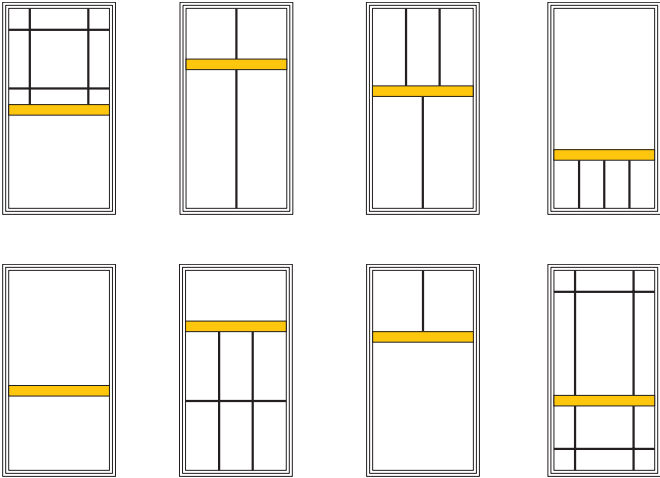
**GREEN TINT**

## SIMULATED CHECKRAIL

Simulated Checkrail is the perfect solution when aesthetics call for the beauty of a double hung, but operation, egress, or performance demand another solution.

You specify placement of the horizontal simulated checkrail bar and the lite cut patterns above and below.

These illustrations offer a sampling of 7/8" Simulated Divided Lite (SDL) patterns that can be selected in combination with the 2 1/32" Simulated Checkrail on Casement, Awning, Glider, Direct Glaze Rectangle, Picture windows, and all Elevate doors.





# HARDWARE STYLES

## WINDOW HARDWARE

Windows feature classic low-profile durable hardware for clean aesthetics, safety, and security.



**SASH LOCK + KEEPER**  
Double Hung and Glider



**FOLDING HANDLE**  
Casement and Awning



DOUBLE HUNG WINDOW IN DESIGNER BLACK  
WITH MATTE BLACK SASH LOCK + KEEPER

## DOOR HANDLES

Door handles are available in two distinct hardware styles.



**CAMBRIDGE**

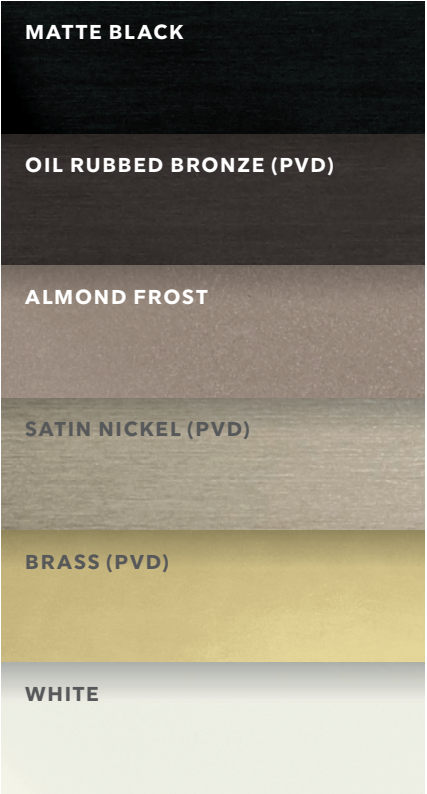


**NORTHFIELD**

### DOOR HANDLE OPTIONS

- Available keyed-alike option (use one key on multiple locks, with up to 3 different keys on each project).
- Choose a distinct interior and exterior handle finish that matches or complements the interior and exterior color of your door.

## FINISHES



Choose from a variety of hardware finishes to complement your Elevate collection windows and doors.

The Physical Vapor Deposition (PVD) process adds a layer of toughness to hardware exposed to environmental factors like direct sun and humidity. PVD finishes resist fading and discoloration, even in coastal areas. PVD has the highest grade corrosion resistant finish.

PVD finish is available on exterior door hardware in Oil Rubbed Bronze, Satin Nickel, and Brass.



Casement Narrow Frame window with  
Oil Rubbed Bronze Folding Handle and Lock Lever



INSWING FRENCH DOOR WITH CAMBRIDGE HANDLE IN SATIN NICKEL PVD



## SAFE AND SOUND

### ACCESSIBILITY OPTIONS

#### OPENING CONTROL DEVICE

Limits opening to 4" while providing for full egress. ASTM F2090 compliant.  
Available on Casement, Double Hung, and Glider windows.

#### SASH LIMITER

Permanently limits sash movement for safety and security.



CASEMENT  
OPENING CONTROL DEVICE



DOUBLE HUNG  
OPENING CONTROL DEVICE



GLIDER  
OPENING CONTROL DEVICE



AWNING  
SASH LIMITER

### IZ3 PRODUCTS FOR COASTAL LIVING

Our Elevate IZ3 Certified products are specifically designed for the extreme conditions and construction requirements of coastal areas. Rigorously tested by third-party agencies to meet or exceed the most stringent coastal codes, they protect against flying debris, driving rain, cyclic pressure, and extreme temperatures. The Ultrex® fiberglass finish exceeds AAMA 624 standards for weathering and fading resistance.



## IN HARSH COASTAL CONDITIONS, YOUR WINDOWS AND DOORS MATTER

Marvin offers windows and doors specifically designed for the coast.



CASEMENT WINDOWS IN EBONY WITH MATTE BLACK HARDWARE



THE MARVIN ELEVATE®  
COLLECTION IS AN IDEAL BLEND  
OF REMARKABLE DESIGN AND  
SUPERIOR STRENGTH.

Warm wood interiors add timeless beauty, while resilient, long-lasting Ultrex® fiberglass exteriors stand up to the toughest conditions, outperforming and outlasting vinyl, roll-form aluminum and other composites.



DOUBLE HUNG AND CASEMENT WINDOWS IN PEBBLE GRAY





Since 1912, Marvin has been a family-owned and -led company, with a legacy of innovation and commitment to the highest quality. We understand the unique opportunity windows and doors have to improve our spaces and how we feel in them. That's why we never stop pushing what's possible and inventing new solutions to channel fresh air, enhance light quality, and connect with the world around us.

**MARVIN.COM/ELEVATE**

©2025 Marvin Lumber and Cedar Co., LLC. All rights reserved.  
®Registered trademark of Marvin Lumber and Cedar Co., LLC.  
ENERGY STAR® and the ENERGY STAR certification mark are registered US marks.

Cover Image: Elevate Casement and Direct Glaze windows with Modern Multi-Slide door

Part #19981914. June 2025.

Colors shown in printed materials are simulations and may not precisely duplicate product or finish colors. Contact your local Marvin dealer to view actual product and finish color samples.



# Pergola X

by STRUXURE®



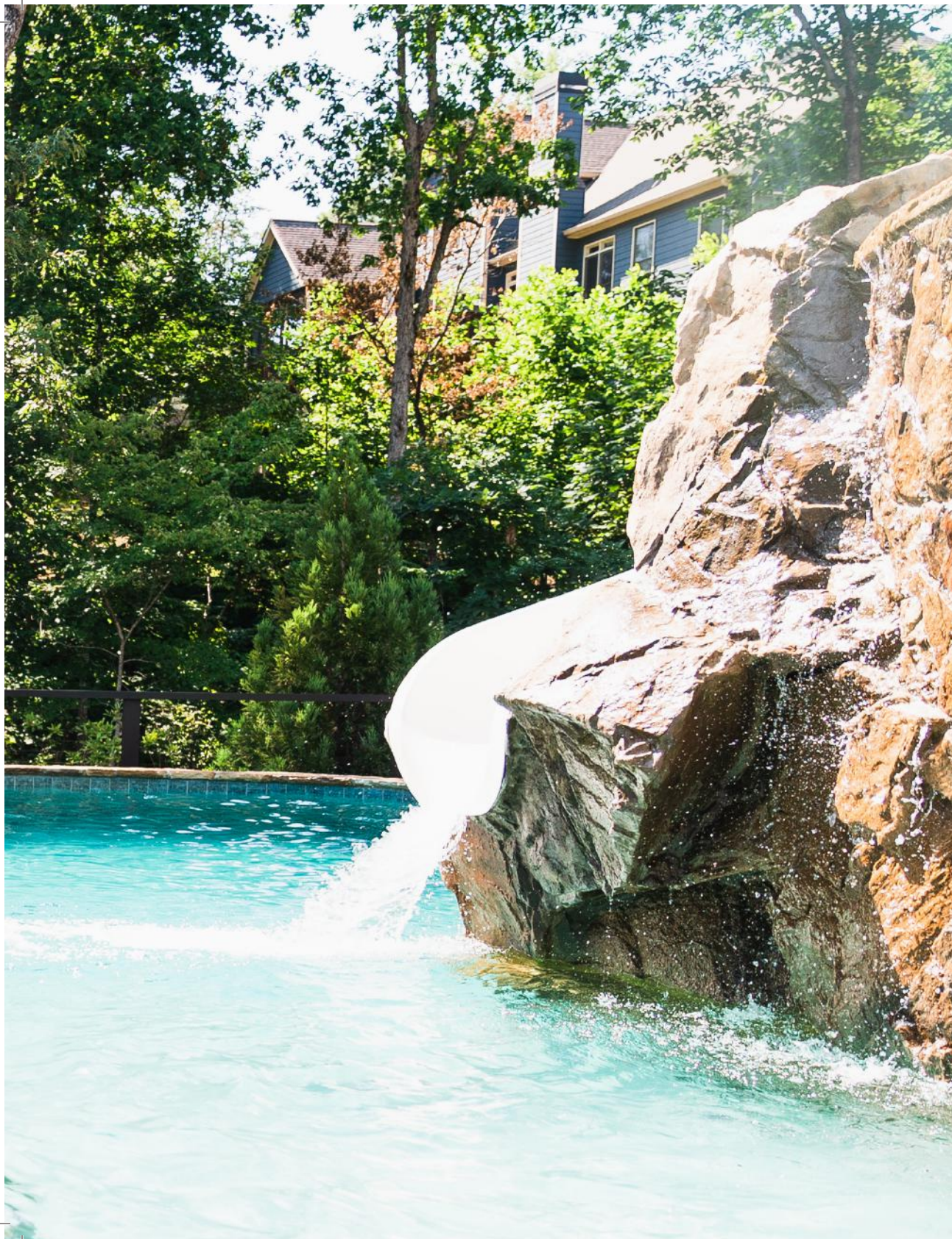


/ Bring The Indoors Out<sup>®</sup>

Visit us today at  
[www.struxure.com](http://www.struxure.com)

or call us for more information  
(800) 303-5248





## Contents

04	Possibilities
06	Company History
08	Craftsmanship
10	Pivot 6 System
12	Pivot 6 Slide System
14	Pivot 6 XL System
16	Pan 6 System
18	Quality Materials
20	Solutions for your Space
22	TraX™ System
24	Range of Motion
25	Gutter System
26	Project Gallery
31	Advanced Technology & Operations
32	Somfy App
34	Environmental Innovation
36	Warranty
38	Pergola X Care





Open up

# The Possibilities

One of the fastest growing industries over the past decade.

Popular programming on networks like HGTV and DIY, dedicated to decorating and home improvement, now educate and inspire homeowners as to all the possibilities for transforming their homes.

As the trend of moving indoor rooms outdoors has grown, creating unique ways to manage the elements like sun and rain has become key to making these spaces more usable. Traditional architecture provided some fixes, but came with limitations and drawbacks. The industry was hungry for a better answer.





That's why StruXure created the perfect solution to controlling the effects of weather. We designed, engineered and patented the highest quality product for improving outdoor living. Today, as the leading innovators in shade and shelter products, we continue to push the envelope, incorporating advanced technology and building materials into our latest designs. No other system offers this level of quality and technology.

Now let's talk about your space. We want to help you create an outdoor living area that you'll enjoy for years. A space to enjoy good times with friends and family. A space that reflects your personality and sense of style. A space that's protected from the elements so it's comfortable year round. A space that's as functional as it is beautiful.







# A History of Innovation



StruXure was named on Inc. 5000 Fastest Growing Private Companies list 2021, 2020, 2019, 2018, 2017, 2016, and 2015, as well as Entrepreneur 360 Best Company list 2019, 2018, & 2016.



We aren't kidding when we say that StruXure is rooted in innovation. Company founder, GM, and Chief Product Architect Scott Selzer was a middle-school teacher with a part-time remodeling business on the side. He specialized in building decks and pergolas, refinishing basements, and tackling other home improvement projects for his clients. When he was asked to find a solution for creating an outdoor shade structure that would still allow sunlight to penetrate the adjacent home's interiors, Scott went on an exhaustive search, eventually concluding that the caliber of product he was seeking didn't exist. Never one to settle, Scott decided to design and build his own product, a pivoting louvered-roof structure that the user could control. Little did Scott know that he had begun a journey that would lead to one of the fastest growing privately held companies in the United States.

What began as Adjustable Patio Covers, a company focused on improving outdoor spaces and the first to bring an adjustable louvered system to the East Coast, evolved into Arcadia Building Products, before becoming StruXure Outdoor in December 2018, and StruXure in 2020.

The Pivot model was our first company offering in 2011, a structure designed and engineered to

withstand all types of weather conditions. Scott continued to find ways to re-design, innovate, and patent even higher quality products, adding the Slide in 2016 and the Pivot XL in 2018. Steady growth led us to move into a new state-of-the-art manufacturing facility and corporate headquarters just north of Atlanta, GA in 2016. We also expanded operations from our existing Southern California office to a much larger West Coast Fulfillment Center and Showroom, located just outside of Las Vegas, NV, in the fall of 2017. In 2020, we added a decorative powder coating facility to have better control over production capacity and to offer more color options, including woodgrains. Our latest product, Cabana X, was unveiled in 2021 as an alternative to our permanent Pergola X shade structures. This led to opening two new Cabana X manufacturing plants: one in Cumming, GA and the other in Henderson, NV.

On January 4, 2022, it was announced that The AZEK Company, Inc. had acquired StruXure. This strategic move not only added StruXure's established and compatible product to AZEK's exceptional and sustainable offerings—including TimberTech® decking, Ultralox® railing, Versatex® and AZEK Trim®—but also provided StruXure with a level of support that can accelerate our R&D efforts and steadfast mission to bring the indoors out. StruXure is continually expanding our technology and design, with a focus on architectural innovation and leading-edge building materials. Our next generation of products will continue to evolve and break new ground. As the leader in automated shade and shelter, our mission is to enhance outdoor living and exceed people's expectations for what an outdoor lifestyle really means.



# Designed, Fabricated & Assembled

by American Craftsmen,  
to your exact specifications.



**Each Pergola X is manufactured entirely in the U.S.  
by American workers,**

who take great pride in what they do. Our team of people really cares and is passionate about building the best system made – and that dedication shows in the beauty and quality of all our products.

Each Pergola X is engineered to exceed all standards and expectations. They're designed to meet Florida's stringent hurricane codes, as well as withstand heavy snow loads in the cold of winter. Plus, each Pergola X is fabricated and powder coated to order, made to exact specifications, which makes for a better fit and finish and a cleaner looking system.

Pergola X is Ideal for any outdoor living areas, such as patios, decks, lanais, verandas, entryways, courtyards, outdoor kitchens, swimming pools and spas. It's also a perfect enhancement for patron comfort at country clubs, restaurants, hotels, resorts, theme parks and sports venues. Select from a variety of available colors, materials and finishes to complement any architectural style and conform to your aesthetics.









**The original Pergola X has been improved and perfected since its inception in 2011.**

Its award-winning pivot design gives a full 170° range of motion to provide a cool oasis, regardless of the sun's position. Now available with our customized Somfy technology, the Pivot can intuitively control the effects of the weather to enhance your outdoor lifestyle.



## Pivot 6

The award-winning pivot design is changing how we live outdoors, with a full 170° range of motion.





### Closed

When closed, the patented louver design interlocks, providing a solid shelter from rain. Water is pitched into the system's 360° integrated gutter.

### Angled In

Shaded space provides protection from the harmful effects of the sun. The Pivot provides SPF protection and allows you to spend more time outdoors without added sun exposure.

### Open

Allow maximum light into your space with the louvers fully open. This position also minimizes resistance and uplift in high winds.

### Angled Out

Angled louvers provide cool shade and air flow without blocking your blue sky view.



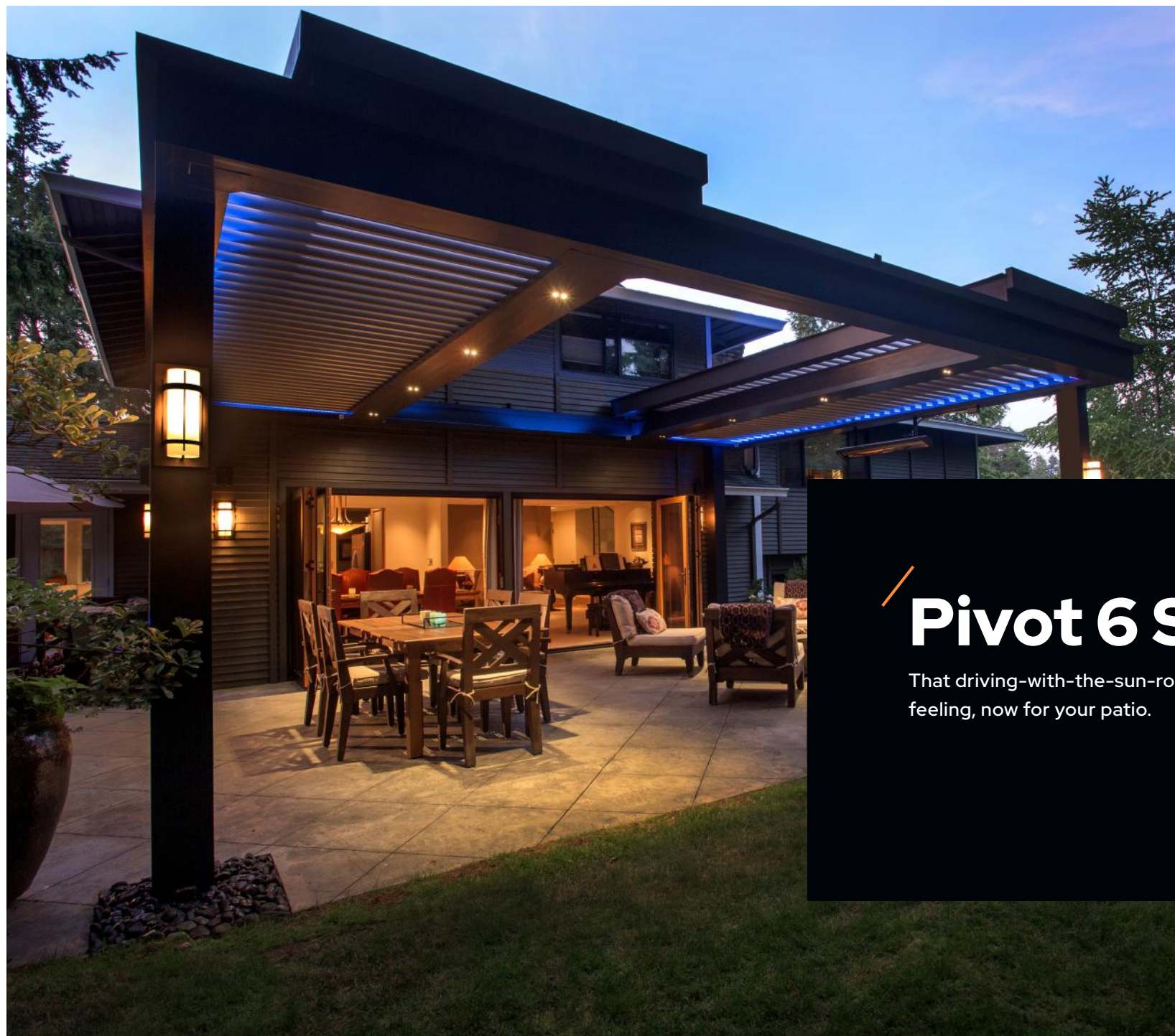


We listened to our customers' feedback and challenged our design team to create a product that can do what no other louvered structure can do: give you full sky. The Pergola X Slide gives you the ability to open the space above you while maintaining the versatility of the Pivot. By combining these two features, the Slide has totally revolutionized the way we view outdoor living. Now, the sky's the limit.

We can design a Pergola X Slide in larger spaces, where a full sky view can provide an impressive visual and eliminate the barrier between you and a beautiful day... or night. With the push of a button, simply slide one pivot zone above another to open up your space. Then, when you're ready, close the Slide and return it to the full functionality of a Pergola X Pivot 6.







# Pivot 6 Slide

That driving-with-the-sun-roof-open  
feeling, now for your patio.



**Get unparalleled coverage for every patron, guest, and fan of your business with this expanded model.**

For commercial applications, the Pivot 6 XL was engineered to span further and handle three times more rain water than our industry-leading Pivot 6 design. This enables StruXure to design bigger systems to accommodate larger projects, making us the industry leader commercially.

## Pivot 6 XL

An expanded version of our Pivot 6, designed to meet the complex needs of our commercial clients.







### 7.5" Gutter

Larger gutters ensure maximum rain protection for your business, keeping your people and your property unaffected by the elements.

### 2x10" Frame

Having a larger frame allows for uninterrupted coverage of the most expansive spaces to keep your business up and running in every season.

### Adaptable Design

Every element of your shade system can be hand-picked to meet the needs of your business, whether it's the color, corbels, lights or screens.





When you don't need every section of your Pergola X to be automated, we offer a fixed ceiling panel option that seamlessly integrates and protects. The Pan 6 is perfect for larger projects with multiple zones where you can alternate between louvers and pans.

This flexibility ultimately allows for truly dynamic outdoor spaces to be created, with some sections that allow for the fullness of the sun to shine through and some that re-create indoor comfort amid the breezes and pleasantries of the great outdoors.







## Pan 6

A complete shade system that combines the Pivot 6 with sections of full coverage where you need it.





# High Quality Building Materials

Each Pergola X is a work of art, constructed with care and attention to every little detail.

Our goal is to give you the strongest, most durable system on the market today. That's why every StruXure system is constructed from fully-extruded aluminum and stainless steel components. The Smart Motor drive system that powers our designs is made by Somfy and is UL and CE certified.

When it comes to finish, we believe a premium product deserves a premium powder coat. We use a premium architectural grade powder coat on all our standard components. Our process demands a more thorough pre-treat process to prep for better adhesion. This is critical when combatting the effects of salt water, chlorine and other environmental conditions. StruXure delivers a higher quality standard finish because our customers demand and deserve the best.





Choose from the six standard options or multiple woodgrain options shown above, or select a completely custom color.



## Colors to **Complement Any Space**



The Pergola X features six standard color options that can enhance almost any architecture. For unique instances where standard won't do, we are able to provide thousands of custom colors for the perfect match. A chemical textured powder coat makes a more scratch-resistant surface, while giving it a matte finish that is extremely on-trend for outdoor design today.





# Solutions for Your Space

StruXure's philosophy is "if it can be designed and engineered, we will build it." Truly amazing designs can be created to meet your exact requirements—however demanding, unusual or eccentric. We take pride in making your Pergola X one of a kind. With so many options and limitless possibilities, how do you know where to begin? Our product specialists can help you design a shade system for your outdoor space that is uniquely yours.

Each Pergola X can be customized to meet virtually any existing architectural elements.

**Ceiling Fans**

**Accent Lighting**

**Custom Colors**

**Wood / Faux Cladding**

**Custom Columns**

**Cornice Style Façade**

**Pergola Cuts / Corbel Ends**

**Motorized Solar Screens**

**Outdoor Curtains**

**Outdoor Heating & Cooling**













## TraX™

Seamless integration of lights and screens right into the posts and beams of your Pergola X.

A natural upgrade to our Pergola X, the TraX™ System takes the control you have over your outdoor space to the next level, allowing screens and lights to be seamlessly integrated into the anatomy of your pergola.

Our patent-pending TraX system, through its unique design, can hold the components and wiring for screens and lighting, both of which are safely separated within the TraX channels. The components can be installed at the time of purchase, or later down the road. The simple installation is as easy as removing the TraX Cap, running the components through the appropriate channels, and replacing the cap. It will appear as though the accessories were there all along.





# Range of Motion



Range of Motion

**170°**

Manual Operation

**150°**

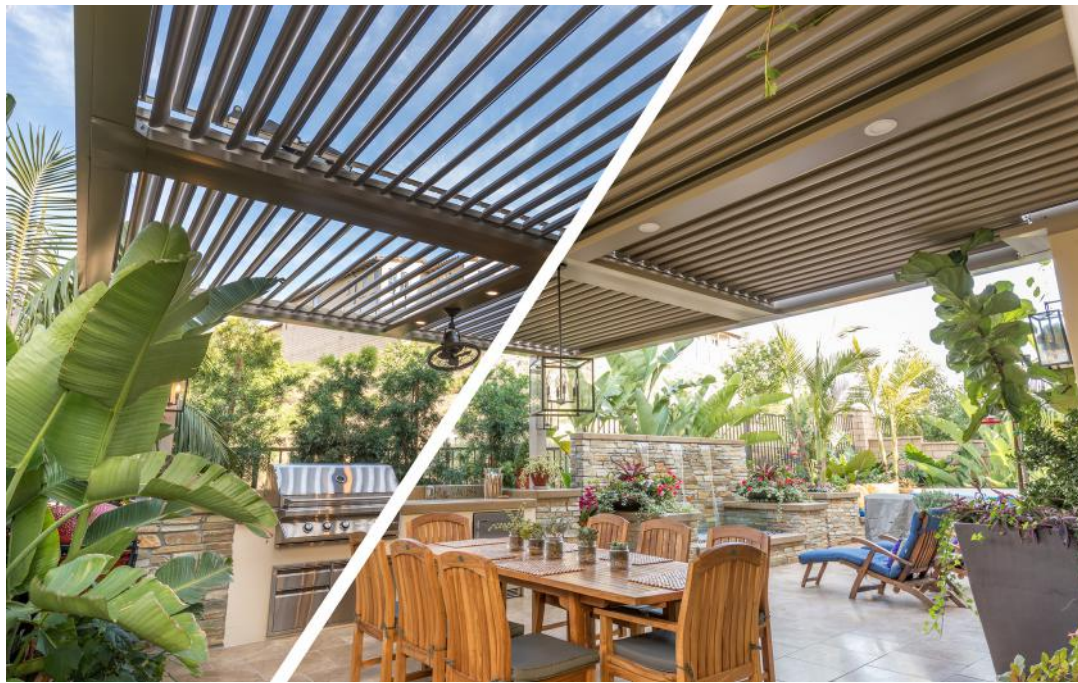
Motorized

Pergola X gives you the power to control the way sun and rain affect your outdoor living space.

We designed the Pergola X to create shade in any space, regardless of position of the sun. Our quiet linear drive system is smooth and efficient in moving the louvers from zero to 170° for manual operation and 140° for motorized. This range of motion provides complete control over both light and weather in your outdoor environment, so your plans can stay as flexible as our systems.

Your perfectly-angled louvers allow for excellent airflow, creating a cool, comfortable outdoor space, where it's possible to enjoy both the feel of the shade and the beauty of a clear blue sky. We like to think of it as the best of both worlds.





## Gutter System

When the system is closed, our interlocking louvers channel water into a fully extruded aluminum gutter system. Our 360° gutter design provides more efficient water management when the louvers are closed.









Commercial







Residential











Gutters



Louvers



Beam Chases  
(Can Lights, Sonance Speakers etc.)

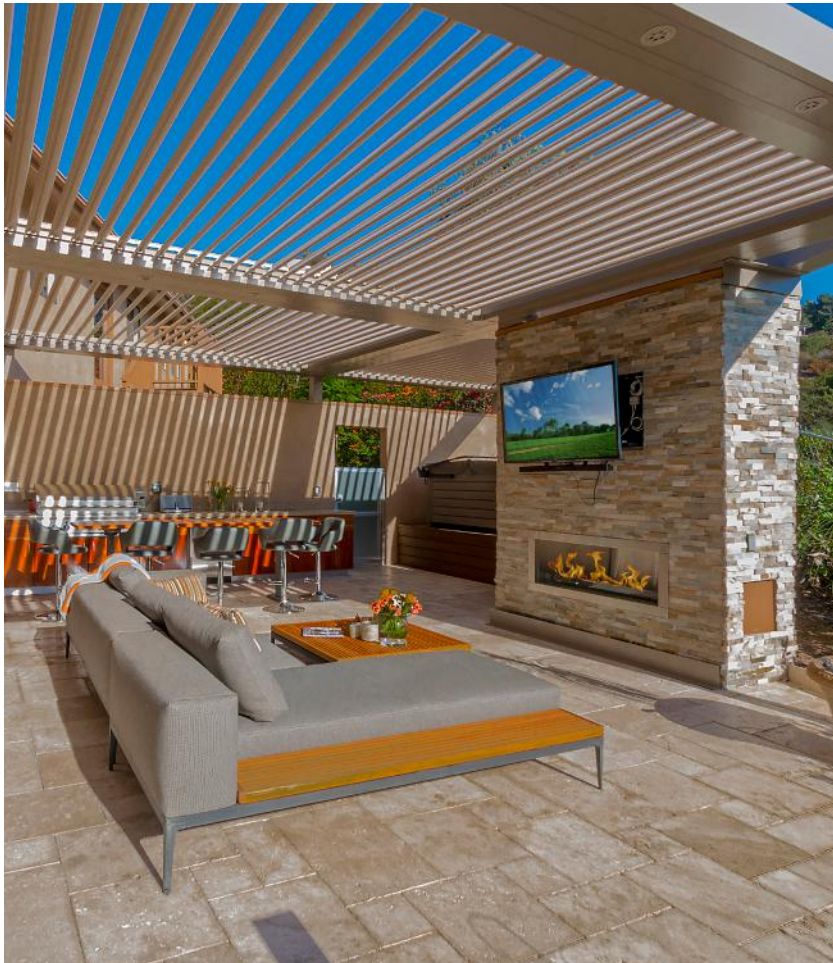


Posts & Beams



### Seamless Operation

Everything is designed to work in unison.  
The result is fingertip control and a dynamic connection with your outdoor space.



# Advanced Technology and Operations

## Somfy Technology (RTS)

Smartphone App

## Sensors

Rain/ Snow/ Ice/ Wind Programmability

## Manual Operation

Optional

## Electric

Optional

## Motorized Drive System

UL and CE Certified

## Pergola X Care

Preventative Maintenance & Cleaning





# Thinks On Its Own

## with Artificial Intelligence

Welcome to the smarter side of outdoor living. The StruXure app by Somfy® provides the ultimate control of your Pergola X from the palm of your hand. It's just one of the ways StruXure continues to innovate, constantly perfecting our products through applied design and advanced technology to deliver the best customer experience.

StruXure app by Somfy® Technology provides users with a variety of programming options including:

### Remote Control with WiFi App

(use both together)

### Home Automation Compatibility

use the same controls to automate both the pergola/structure and motorized screens

### More Sensors

rain, wind, snow/ice, freeze

### Voice Control

(Amazon Alexa integration)

### Programmability

(different times of the day)

### Full Range of Radio Controls

### Technical Support

### Training Support

### 7 Year Full Warranty





Program & control your system with the StruXure app by Somfy®.











# Environmental Innovation

StruXure is proud to continue our tradition of environmental innovation. Using sustainable building materials, we've created a strong and lightweight pergola that is virtually maintenance free. From the selection of our building materials to our innovative designs and lean production methods, StruXure is committed to operating as a sustainable business and reducing our overall environmental impact.

## Eco-Friendly Design

Each Pergola X is manufactured in the U.S. and fabricated with recycled aluminum, making it an extremely green product. The louvers can be oriented in any direction desired for maximum control over sunlight. That means in the winter, you can let sun through to provide warmth and light to adjacent rooms. In the summer, you can angle your louvers to provide energy-saving shade. At any time of year, rain water can be reclaimed from closed louvers and used to water plants. In every season, there's a reason to love the eco-friendly design of the Pergola X.



# Limited Lifetime Warranty

StruXure Outdoor Inc. extends a transferable limited warranty to the structural components and movable accessories of our products.

StruXure warrants our products for the lifetime of each product against manufacturer's defects in materials.

**15 years**

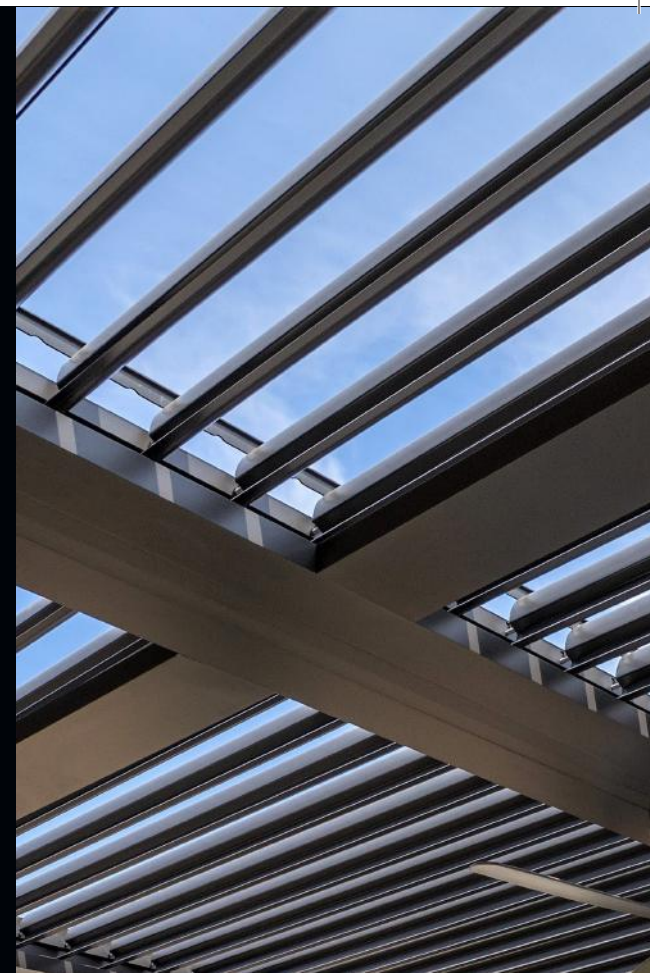
Structural Components

**10 years**

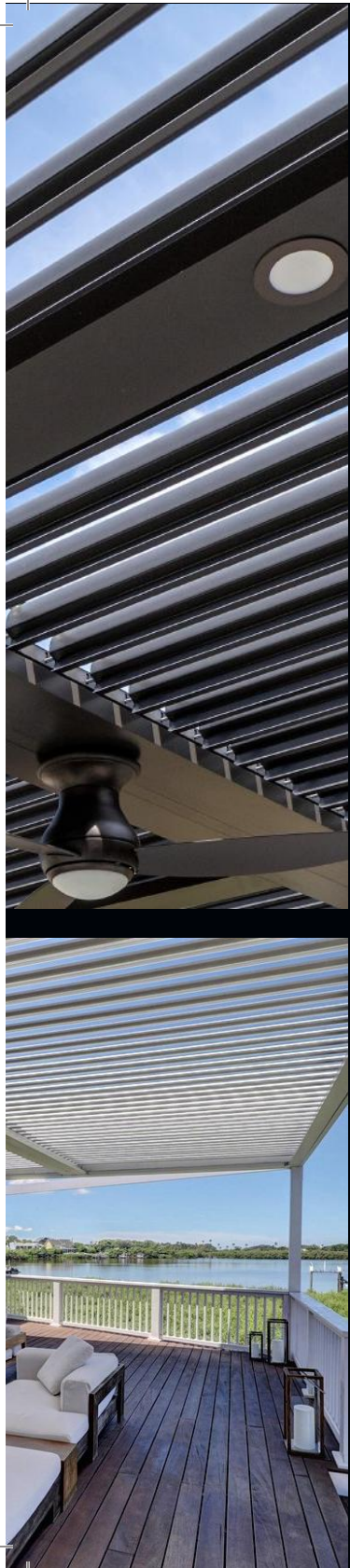
Manual Operator

**7 years**

Electrical Components,  
Drive Motor, & Symmetry









# Pergola X Care

Think of it like changing the oil in your car or taking it to a carwash for a detail. You want to take care of your investment. Pergola X Care is a planned preventative maintenance and cleaning program, generally performed once or twice a year, that's designed especially for your Pergola X system. This program will allow you to keep your Pergola X operating at peak performance, so you may enjoy it for many years to come.

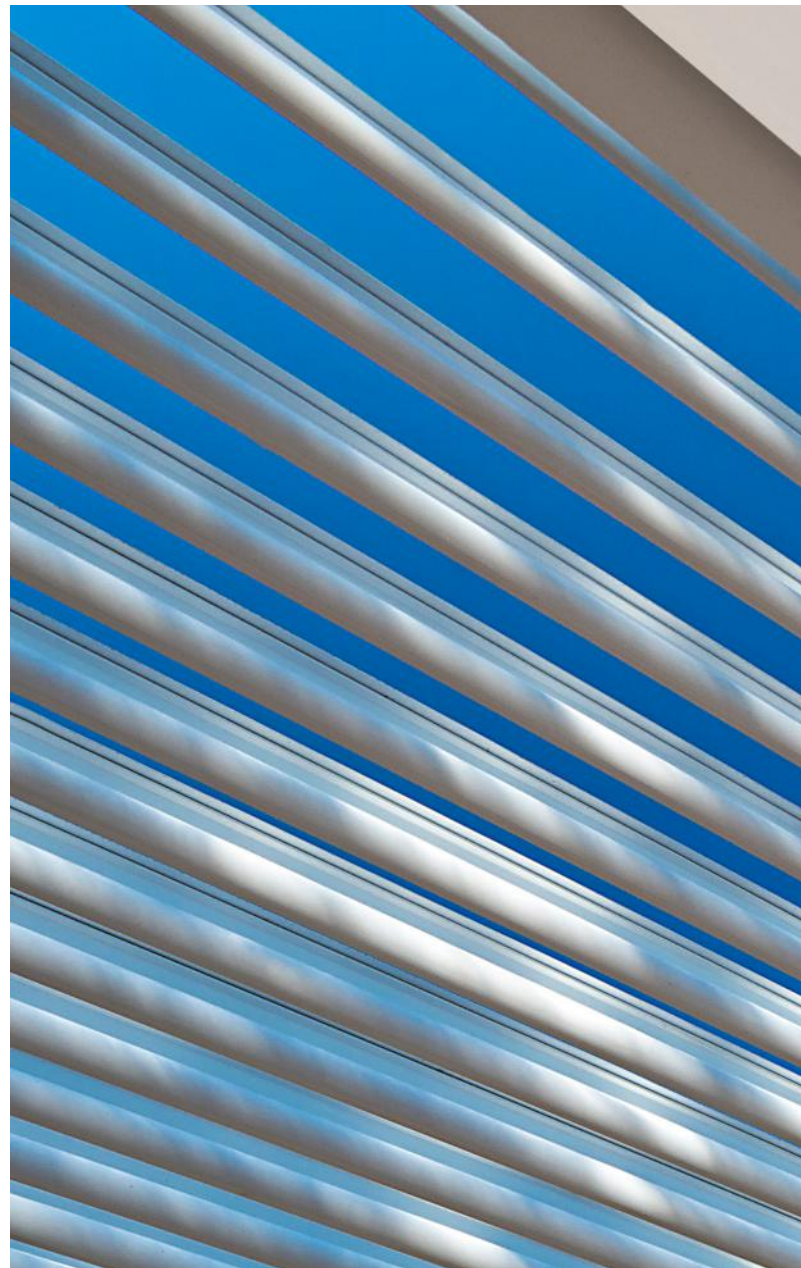
Members of the Pergola X Care Preventative Maintenance Program enjoy the standard coverage offered by the general StruXure Product Warranty, plus the following add-ons:

**Testing of Moving Parts**

**General Wear and Tear Checked**

**Comprehensive Cleaning of Louvered Roof**

**System Gutter Cleaning**



Please contact the dealer that installed your system for more details and pricing. Joining is optional. (Not all Authorized StruXure Dealers participate in Pergola X Care, please check with your local dealer.)









[www.struxure.com](http://www.struxure.com)

[@struxureoutdoor](https://www.instagram.com/struxureoutdoor)

800.303.5248



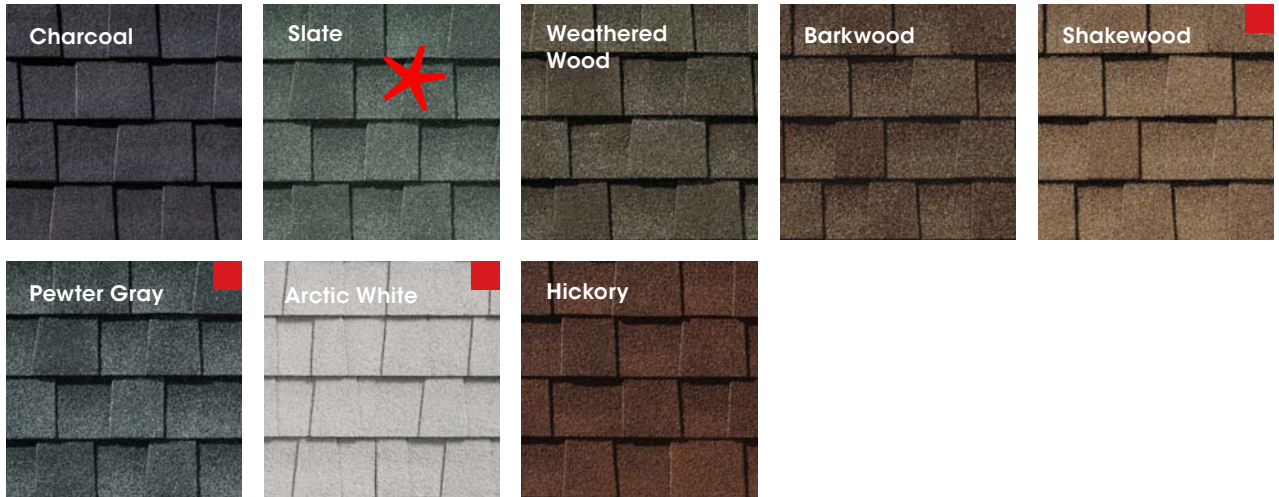




# GAF Timberline<sup>®</sup>NS

Natural Shadow<sup>®</sup> Lifetime Shingles

These stylish yet practically priced architectural shingles provide value and performance with a classic shadow effect for a subtle, even-toned look.



Timberline<sup>®</sup> Shingles LRS

For more details visit [gaf.com/NS](http://gaf.com/NS)





**FRONT**



**EAST**



**REAR**



**WEST**

**VALERIE HALAS**  
INTERIOR RENOVATIONS + ADDITIONS  
*design*

325 S. DAWSON AVE  
BEXLEY, OH. 43209  
WWW.VHALASDESIGN.COM  
614.400.1469 © 2025

CONSULTANTS:

ARON AND RIVKA COHEN  
2750 FAIR AVE  
BEXLEY, OH 43209

EXISTING PHOTOS

ARB  
SUBMISSION 09.22.25

SCALE: AS NOTED

SHEET:

**EX1**



EX. DEVELOPMENT INFORMATION FOR 2750 FAIR AVENUE

ZONING DESIGNATION = R-6  
TOTAL LAND AREA = 12,775 SF

MAXIMUM BUILDING COVER (35%) =4,471.25 SF

MAXIMUM DEVELOPMENT COVER (60%) =4,260 SF

PROPOSED BUILDING COVER

EXISTING HOUSE =2,050 SF

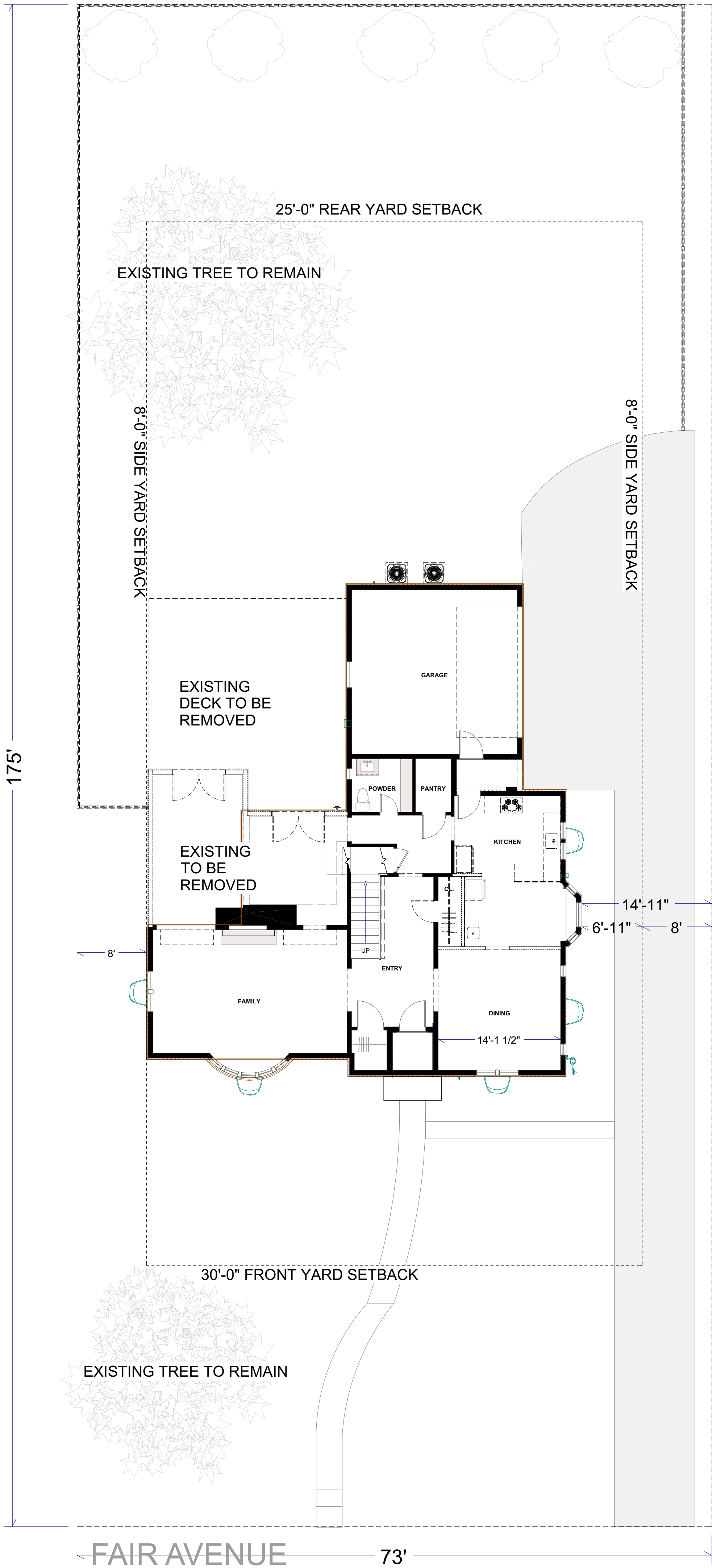
TOTAL BUILDING COVER (16%) = 2,050 SF

PROPOSED DEVELOPMENT COVER

BUILDING COVER = 2,050  
EXISTING DRIVEWAY = 1,456 SF  
EXISTING FRONT SIDEWALK = 205 SF

TOTAL (29%) =3,711 SF

EXISTING SITE PLAN  
SCALE = 1/8"= 1'-0"



VALERIE HALAS  
design  
INTERIOR RENOVATIONS + ADDITIONS  
325 S. DAWSON AVE.  
BEXLEY, OH. 43209  
www.valeriedesign.com  
614.400.1469 © 2025

CONSULTANTS:  
ARON AND RIVKA COHEN  
2750 FAIR AVE  
BEXLEY, OH 43209

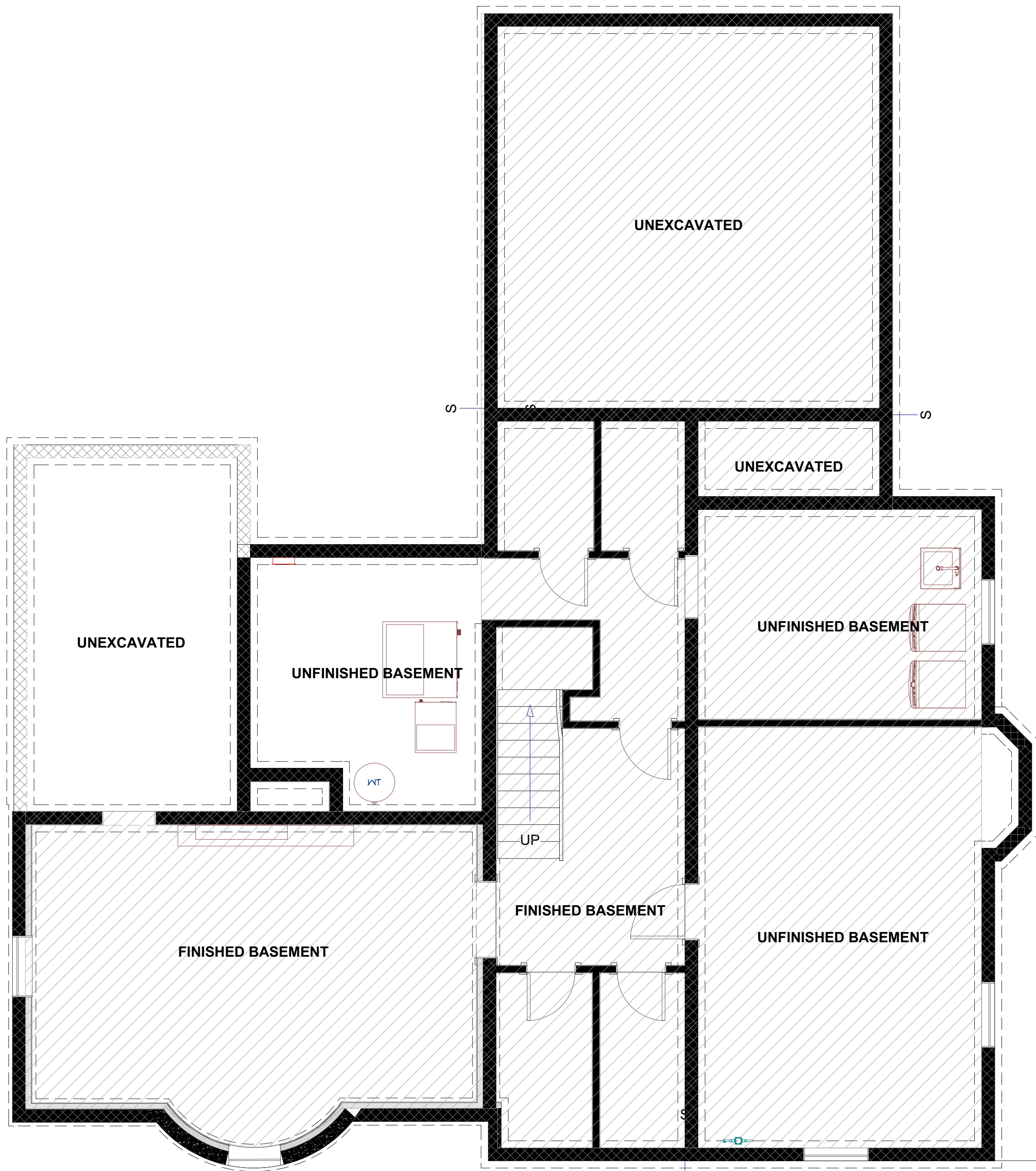
EXISTING SITE PLAN

ARB  
SUBMISSION 09.22.25

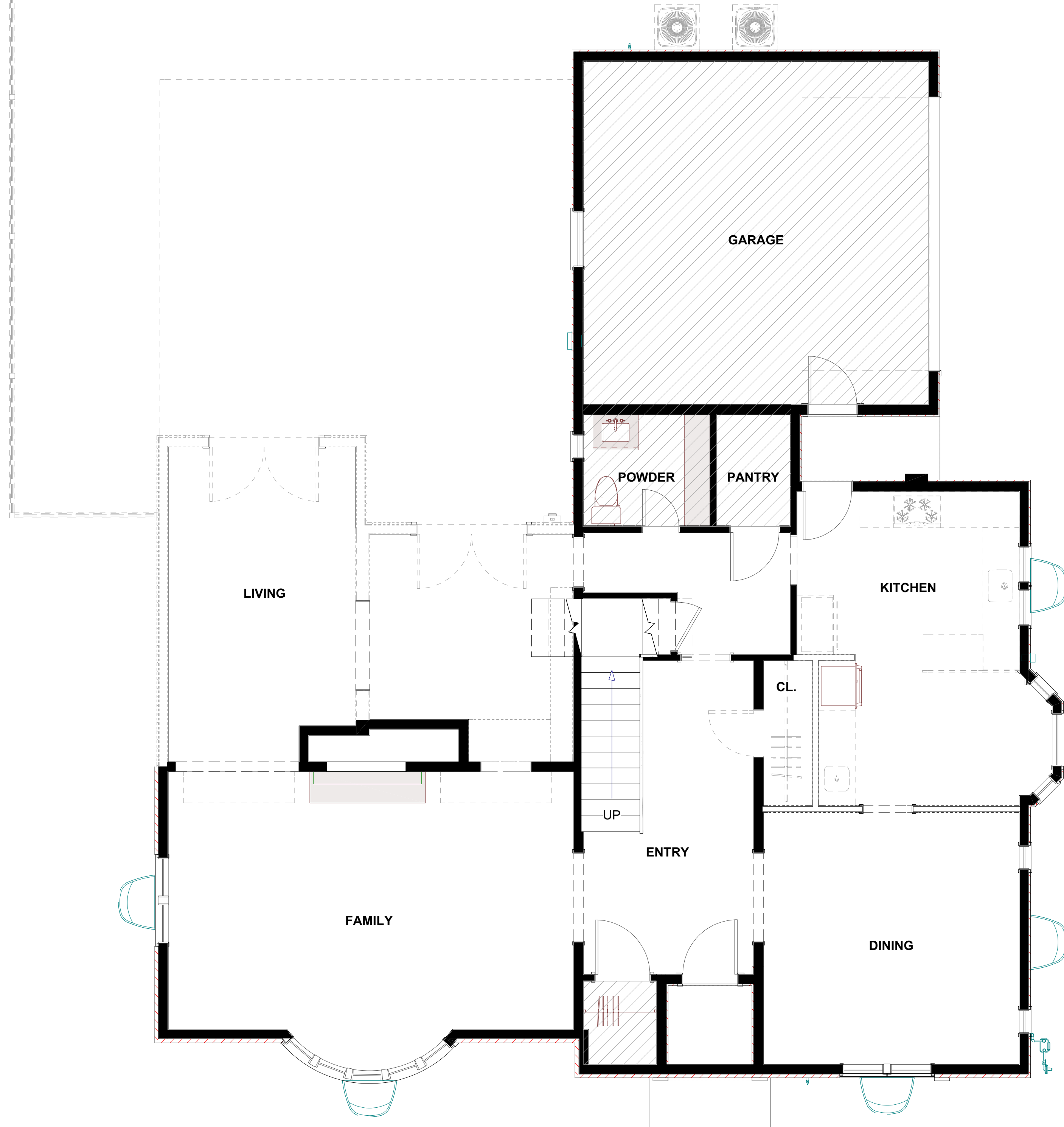
SCALE: AS NOTED

SHEET:  
EX2





**EXISTING BASEMENT PLAN**  
SCALE = 1/4" = 1'-0"



**EXISTING FIRST FLOOR PLAN**  
SCALE = 1/4" = 1'-0"

CONSULTANTS:

ARON AND RIVKA COHEN  
2750 FAIR AVE  
BEXLEY, OH 43209

EXISTING PLANS

ARB  
SUBMISSION 09.22.25

SCALE: AS NOTED

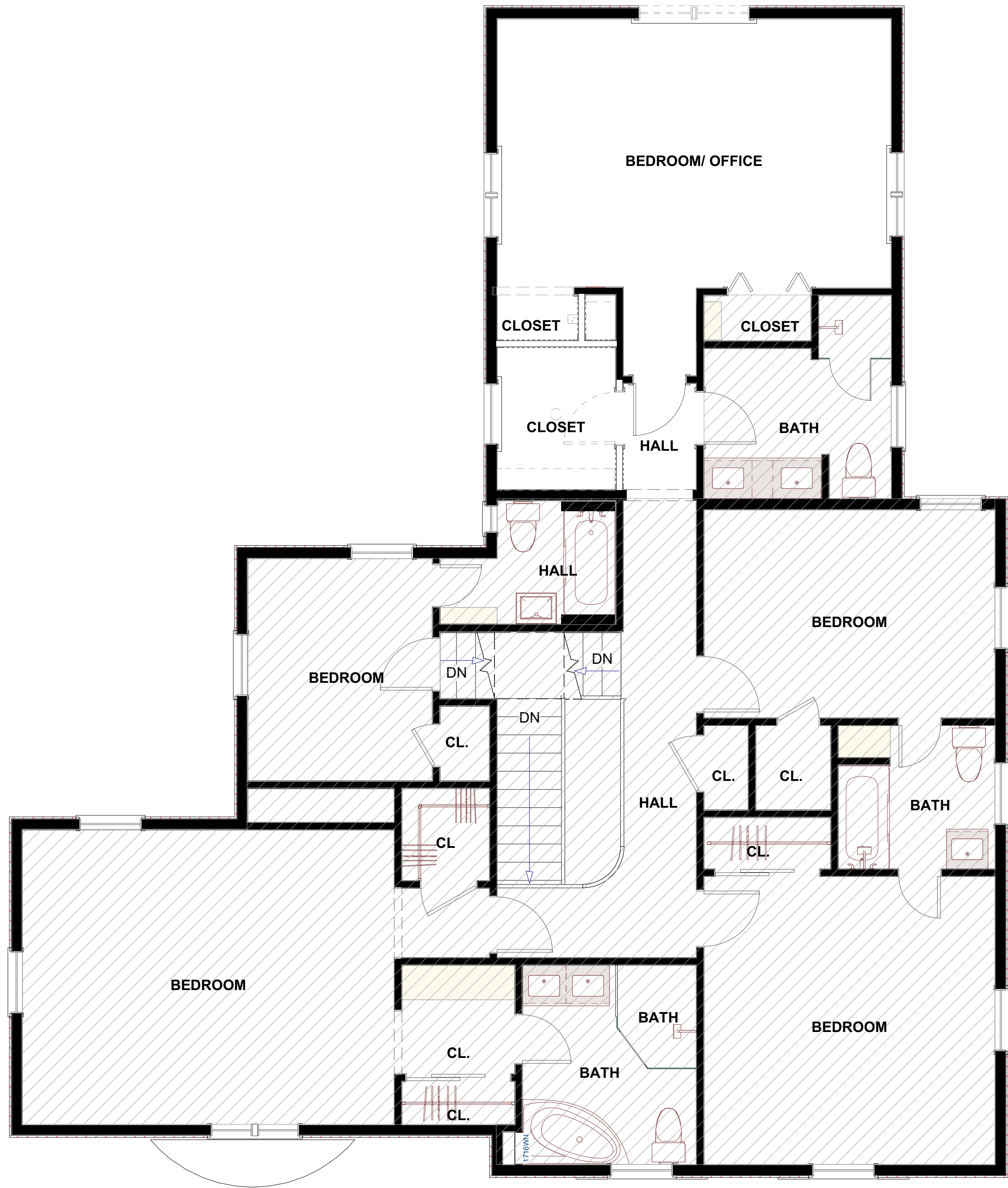
SHEET:

EX3

**VALERIE HALAS**  
INTERIOR RENOVATIONS + ADDITIONS  
*design*

325 S. DAWSON AVE  
BEXLEY, OH 43209  
WWW.VHALASDESIGN.COM  
614.400.1469 © 2025





**EXISTING SECOND PLAN**  
SCALE = 1/4" = 1'-0"

CONSULTANTS:

ARON AND RIVKA COHEN  
2750 FAIR AVE  
BEXLEY, OH 43209

EXISTING PLANS

ARB  
SUBMISSION 09.22.25

SCALE: AS NOTED

SHEET:  
**EX4**



DEVELOPMENT INFORMATION FOR 2750 FAIR AVENUE

ZONING DESIGNATION = R-6  
TOTAL LAND AREA = 12,775 SF

MAXIMUM BUILDING COVER (35%) =4,471.25 SF

MAXIMUM DEVELOPMENT COVER (60%) =7,665 SF

PROPOSED BUILDING COVER

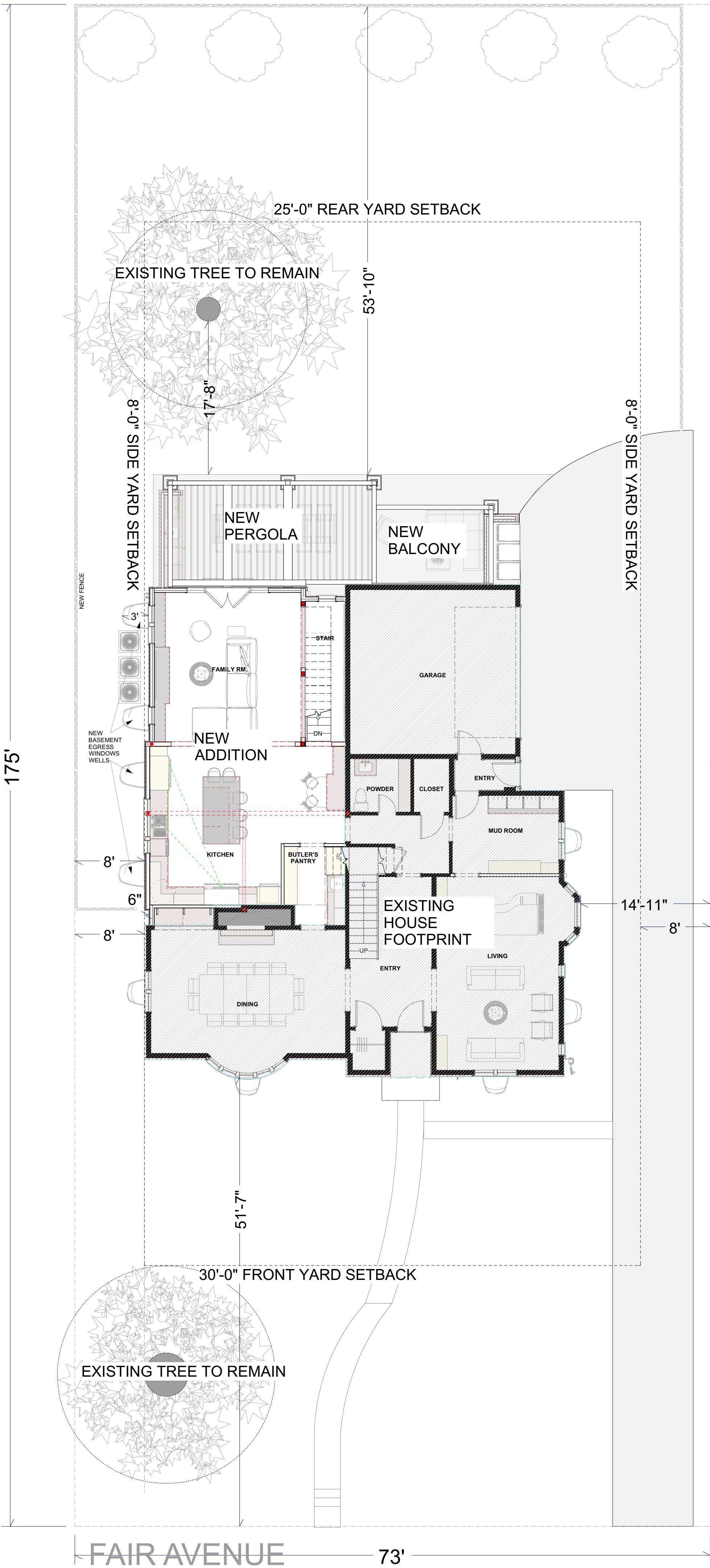
EXISTING HOUSE =1,715 SF  
PROPOSED ADDITION =863SF  
PROPOSED COVERED PATIO/ BALCONY =418 SF

TOTAL BUILDING COVER (23.4%) = 2,996 SF

PROPOSED DEVELOPMENT COVER

BUILDING COVER = 2,996 SF  
EXISTING DRIVEWAY = 1,553 SF  
EXISTING FRONT SIDEWALK = 213 SF  
PROPOSED REAR PATIO/ SIDEWALK = 132 SF

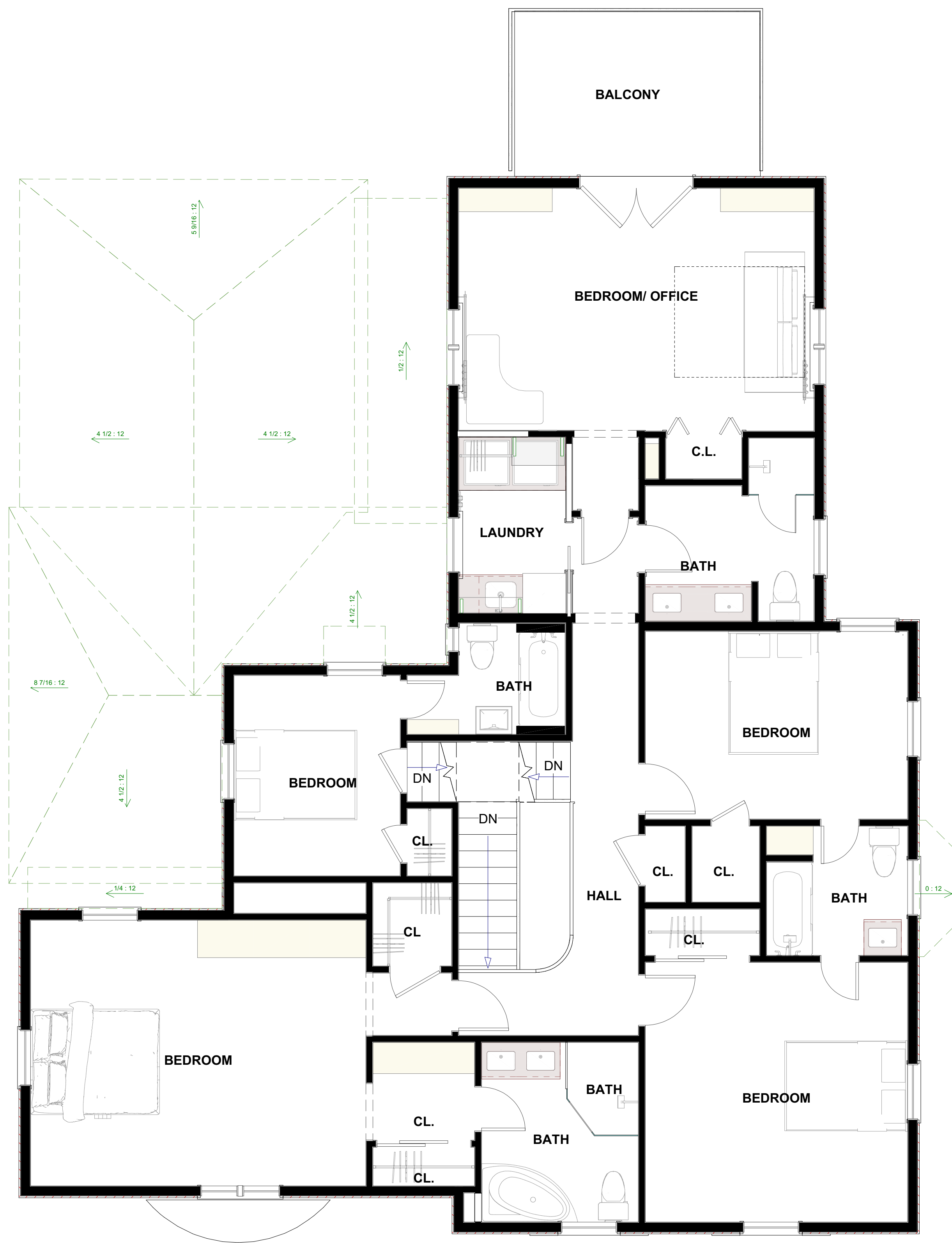
TOTAL (38.3%) =4,894 SF











## SECOND FLOOR PLAN

SCALE = 1/4" = 1'-0"

CONSULTANTS:

ARON AND RIVKA COHEN  
2750 FAIR AVE  
BEXLEY, OH 43209

PLANS

ARB  
SUBMISSION 09.22.25

SCALE: AS NOTED

SHEET:

**A3**





**E1. REAR ELEVATION**

SCALE = 3/8" = 1'-0"

**EXTERIOR FINISHES**

**EXTERIOR WALLS:**

STUCCO TO MATCH EXISTING  
STONE VENEER WATER TABLE TO MATCH EXISTING STONE CLADDING CAPPED W/ STONE SILL

**HIP ROOF: NEW ADDITION**

NEW DIMENSIONAL ASPHALT SHINGLE

**LOW SLOP ROOF: NEW ADDITION**

EPDM- BLACK

**DOORS**

MARVIN ELEVATE - FIBERGLASS EXTERIOR, WOOD CLAD INTERIOR

**WINDOW**

MARVIN ELEVATE- FIBERGLASS EXTERIOR, WOOD CLAD INTERIOR

**WINDOW AND DOOR TRIM:**

HARDIE BOARD TRIM - TO MATCH EXISTING IN TRIM PROFILE AND PAINT COLOR

**GUTTERS**

6" OGEE - MATCH EXISTING COLOR

**DOWNSPOUTS**

MATCH EXISTING

**STRUXURE PERGOLA AND PERGOLA COLUMNS**

EXTRUDED ALUMINUM- AGED BRONZE ON PLINTH CLADDED W/ STONE VENEER TO MATCH EX AND CAPPED WITH LIMESTONE

**BALCONY COLUMN CLADDING**

BORAL CLADDED COLUMNS (PAINTED TO MATCH STRUXURE ALUMINUM) ON PLINTH CLADDED W/ STONE VENEER TO MATCH EX AND CAPPED WITH LIMESTONE

CONSULTANTS:

ARON AND RIVKA COHEN  
2750 FAIR AVE  
BEXLEY, OH 43209

EXTERIOR ELEVATION

ARB  
SUBMISSION 09.22.25

SCALE: AS NOTED

SHEET:

A4





**E2. WEST ELEVATION**

SCALE =3/8"= 1'-0"

**EXTERIOR FINISHES**

**EXTERIOR WALLS:**

STUCCO TO MATCH EXISTING  
STONE VENEER WATER TABLE TO MATCH EXISTING STONE CLADDING CAPPED W/ STONE SILL

**HIP ROOF: NEW ADDITION**

NEW DIMENSIONAL ASPHALT SHINGLE

**LOW SLOP ROOF: NEW ADDITION**

EPDM- BLACK

**DOORS**

MARVIN ELEVATE - FIBERGLASS EXTERIOR, WOOD CLAD INTERIOR

**WINDOW**

MARVIN ELEVATE- FIBERGLASS EXTERIOR, WOOD CLAD INTERIOR

**WINDOW AND DOOR TRIM:**

HARDIE BOARD TRIM - TO MATCH EXISTING IN TRIM PROFILE AND PAINT COLOR

**GUTTERS**

6" OGEE - MATCH EXISTING COLOR

**DOWNSPOUTS**

MATCH EXISTING

**STRUXURE PERGOLA AND PERGOLA COLUMNS**

EXTRUDED ALUMINUM- AGED BRONZE ON PLINTH CLADDED W/ STONE VENEER TO MATCH EX AND CAPPED WITH LIMESTONE

**BALCONY COLUMN CLADDING**

BORAL CLADDED COLUMNS (PAINTED TO MATCH STRUXURE ALUMINUM) ON PLINTH CLADDED W/ STONE VENEER TO MATCH EX AND CAPPED WITH LIMESTONE

CONSULTANTS:

ARON AND RIVKA COHEN  
2750 FAIR AVE  
BEXLEY, OH 43209

EXTERIOR ELEVATION

ARB  
SUBMISSION 09.22.25

SCALE: AS NOTED

SHEET:

A5

VALERIE HALAS  
design  
INTERIOR RENOVATIONS + ADDITIONS

325 S. DAWSON AVE  
BEXLEY, OH 43209  
www.valeriedesign.com  
www.valeriedesign.com  
614.400.1469 © 2025





**E3. EAST ELEVATION**

SCALE =3/8"= 1'-0"

**EXTERIOR FINISHES**

**EXTERIOR WALLS:**

STUCCO TO MATCH EXISTING  
STONE VENEER WATER TABLE TO MATCH EXISTING STONE CLADDING CAPPED W/ STONE SILL

**HIP ROOF: NEW ADDITION**

NEW DIMENSIONAL ASPHALT SHINGLE

**LOW SLOP ROOF: NEW ADDITION**

EPDM- BLACK

**DOORS**

MARVIN ELEVATE - FIBERGLASS EXTERIOR, WOOD CLAD INTERIOR

**WINDOW**

MARVIN ELEVATE- FIBERGLASS EXTERIOR, WOOD CLAD INTERIOR

**WINDOW AND DOOR TRIM:**

HARDIE BOARD TRIM - TO MATCH EXISTING IN TRIM PROFILE AND PAINT COLOR

**GUTTERS**

6" OGEE - MATCH EXISTING COLOR

**DOWNSPOUTS**

MATCH EXISTING

**STRUXURE PERGOLA AND PERGOLA COLUMNS**

EXTRUDED ALUMINUM- AGED BRONZE ON PLINTH CLADDED W/ STONE VENEER TO MATCH EX AND CAPPED WITH LIMESTONE

**BALCONY COLUMN CLADDING**

BORAL CLADDED COLUMNS (PAINTED TO MATCH STRUXURE ALUMINUM) ON PLINTH CLADDED W/ STONE VENEER TO MATCH EX AND CAPPED WITH LIMESTONE

CONSULTANTS:

ARON AND RIVKA COHEN  
2750 FAIR AVE  
BEXLEY, OH 43209

EXTERIOR ELEVATION

ARB  
SUBMISSION 09.22.25

SCALE: AS NOTED

SHEET:

A6





CONSULTANTS:

ARON AND RIVKA COHEN  
2750 FAIR AVE  
BEXLEY, OH 43209

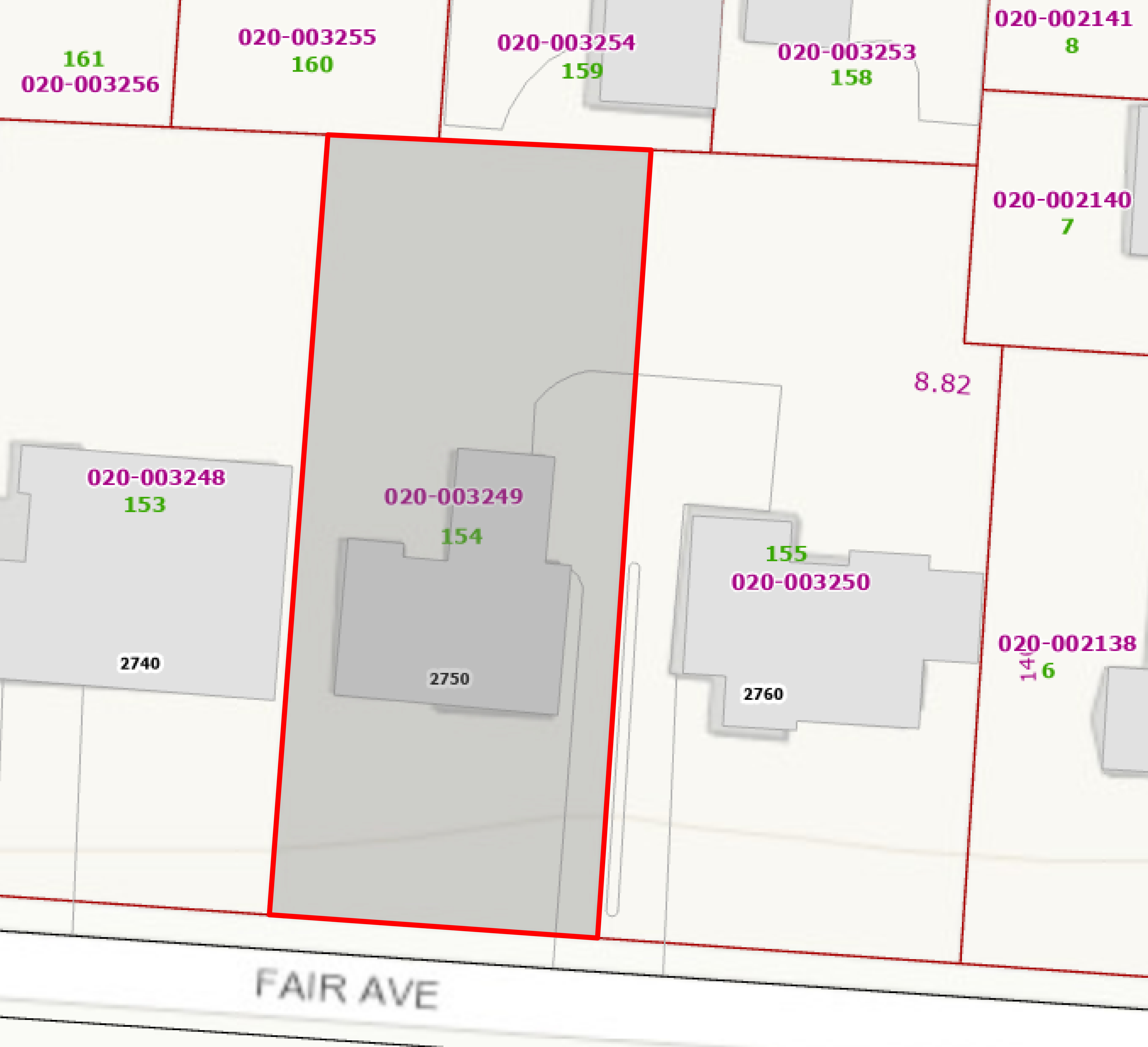
3D VIEWS

ARB  
SUBMISSION 09.22.25

SCALE: AS NOTED

SHEET:  
**A7**





CONSULTANTS:

ARON AND RIVKA COHEN  
2750 FAIR AVE  
BEXLEY, OH 43209

FRANKLIN AUDITOR MAP

ARB  
SUBMISSION 09.22.25

SCALE: AS NOTED

SHEET:  
**A8**