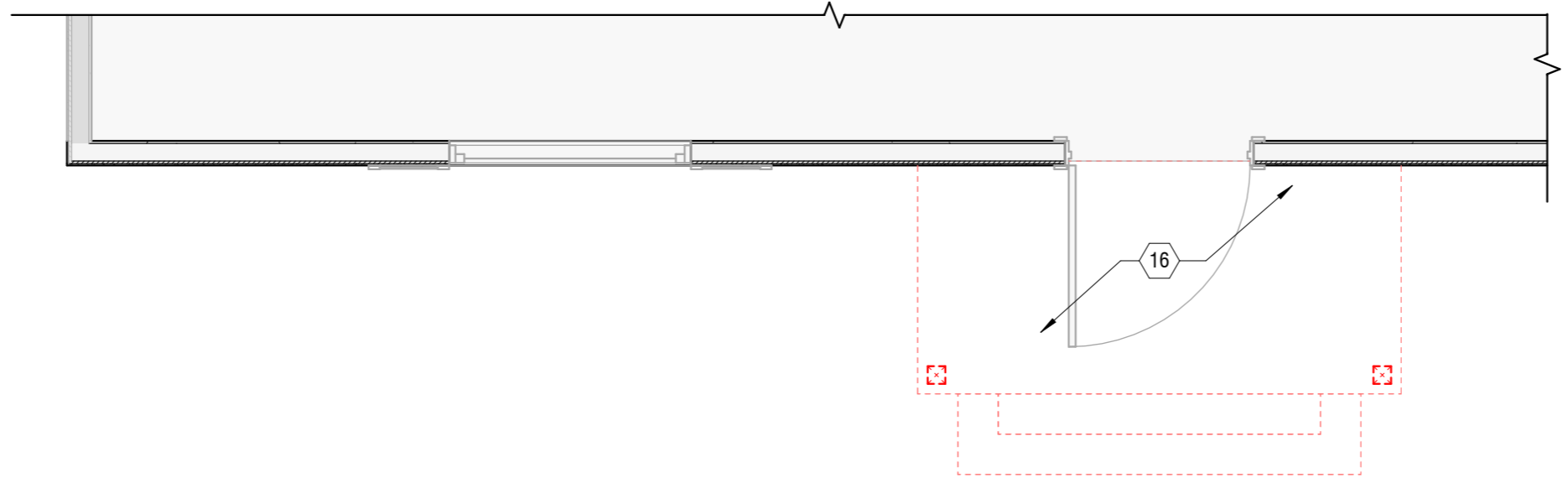
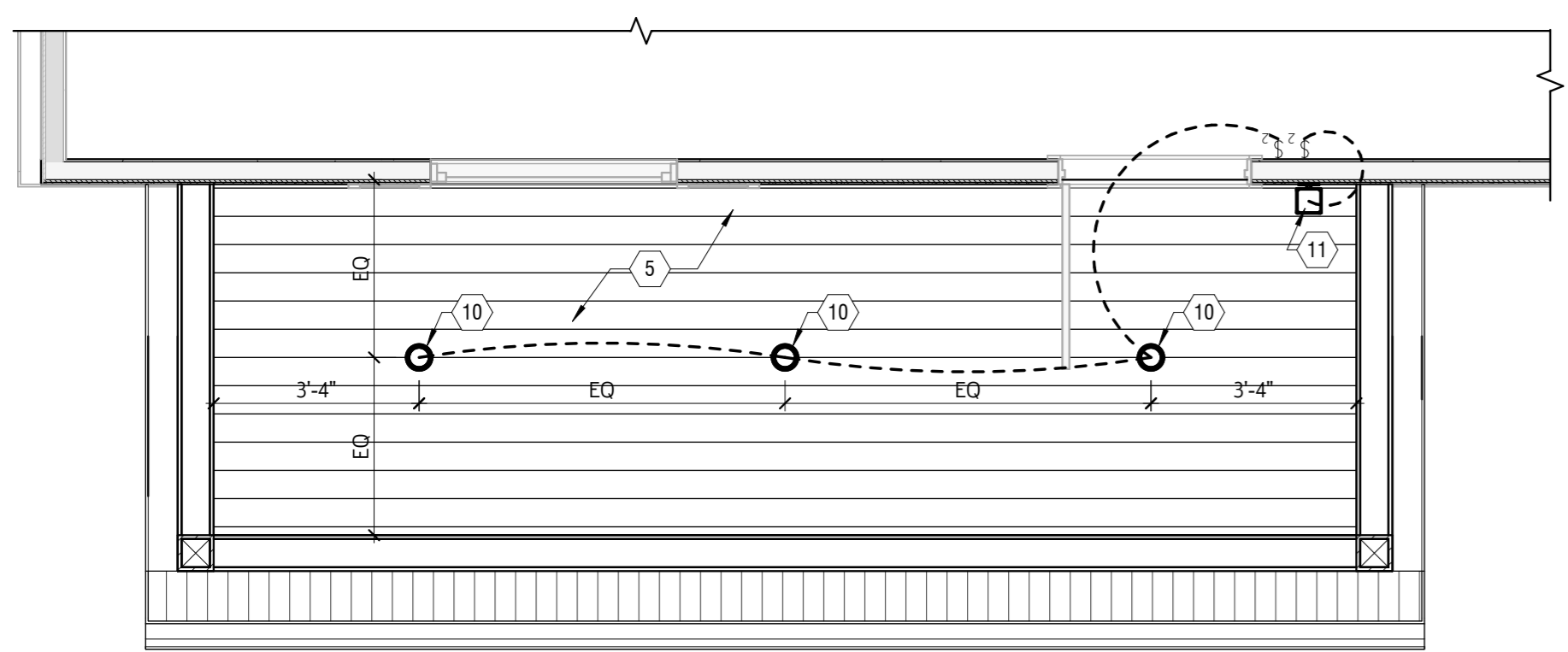


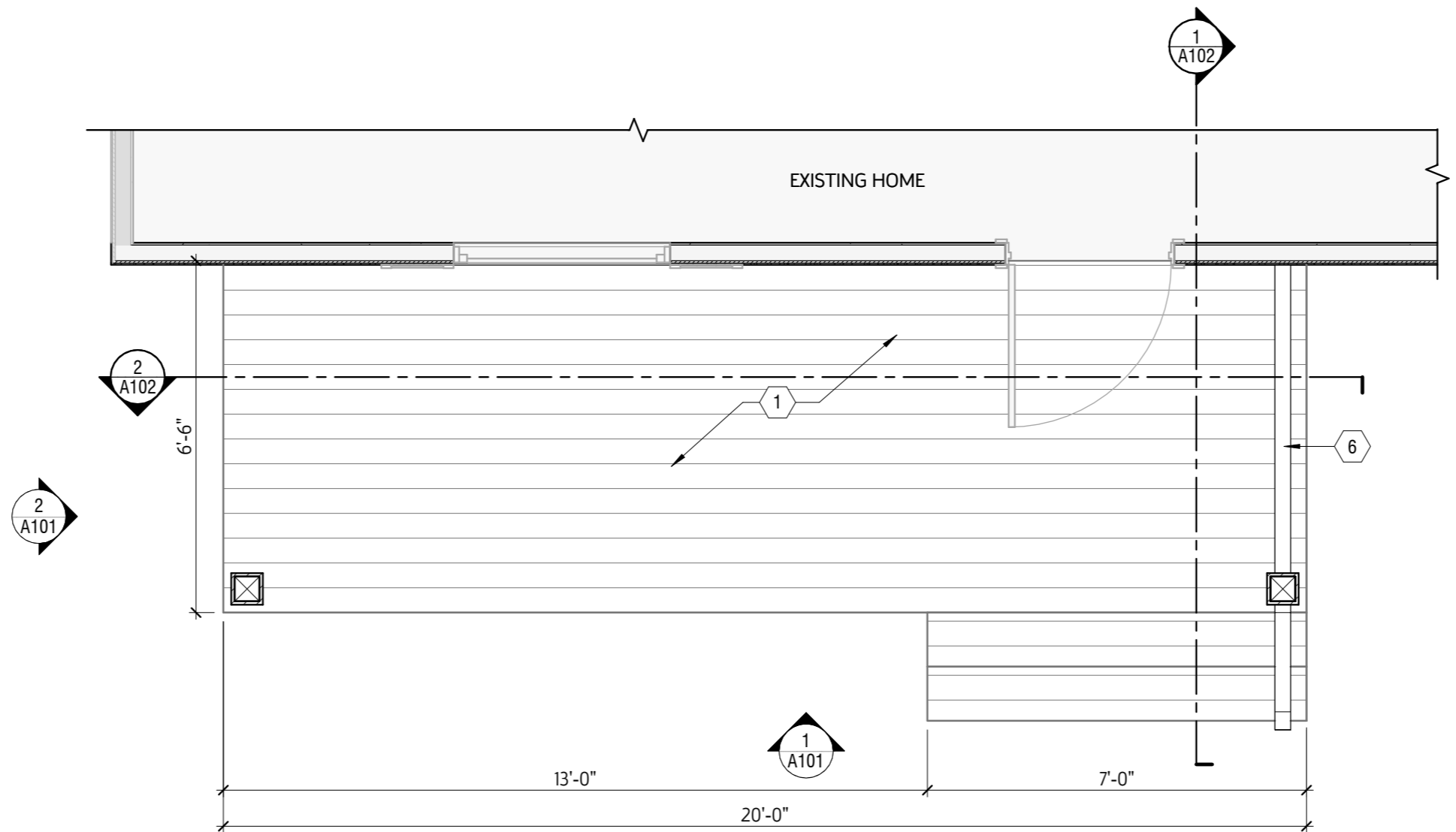
3 ROOF PLAN  
SCALE 3/8" = 1'-0"



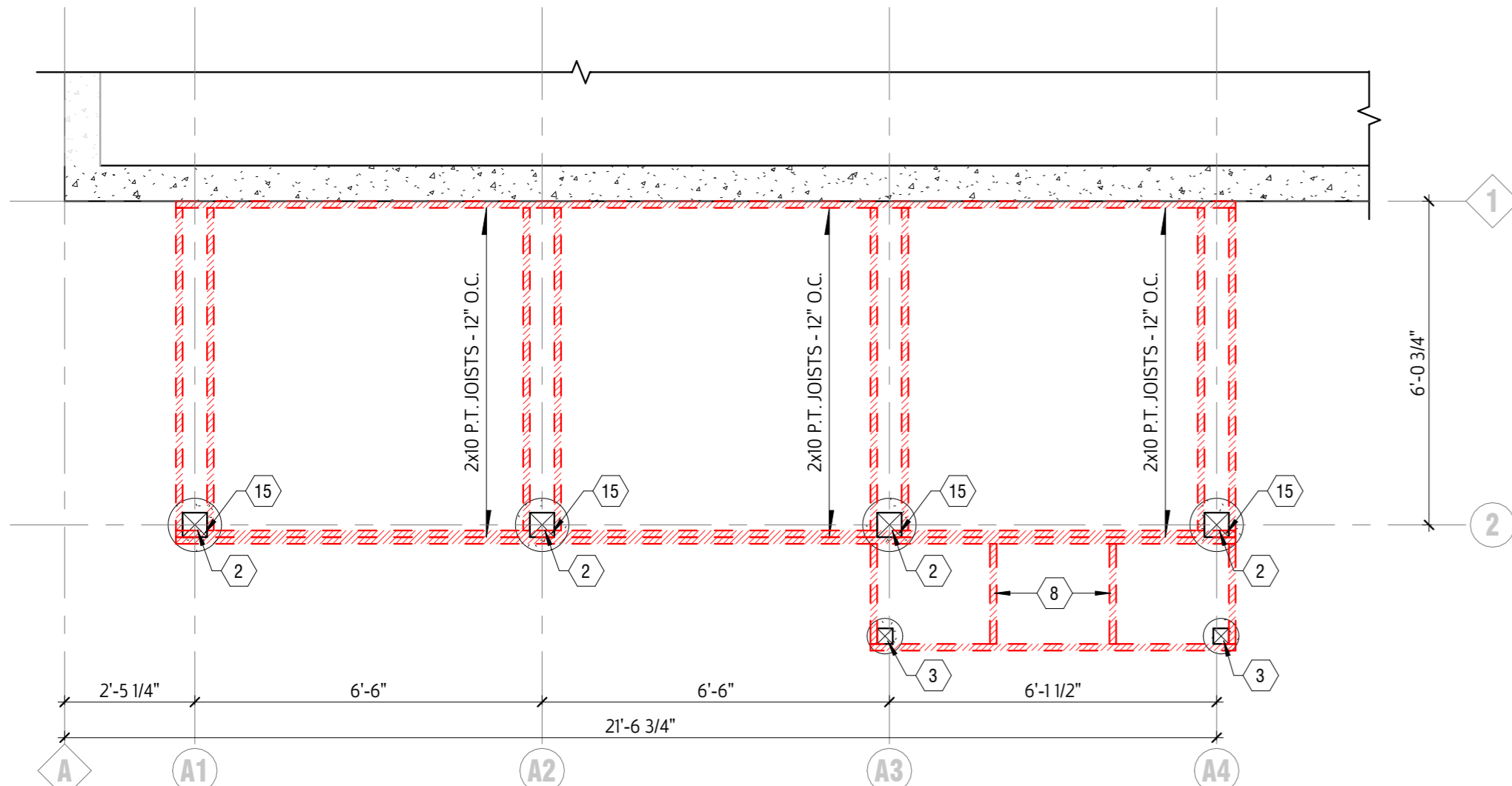
0 DEMO PLAN  
SCALE 3/8" = 1'-0"



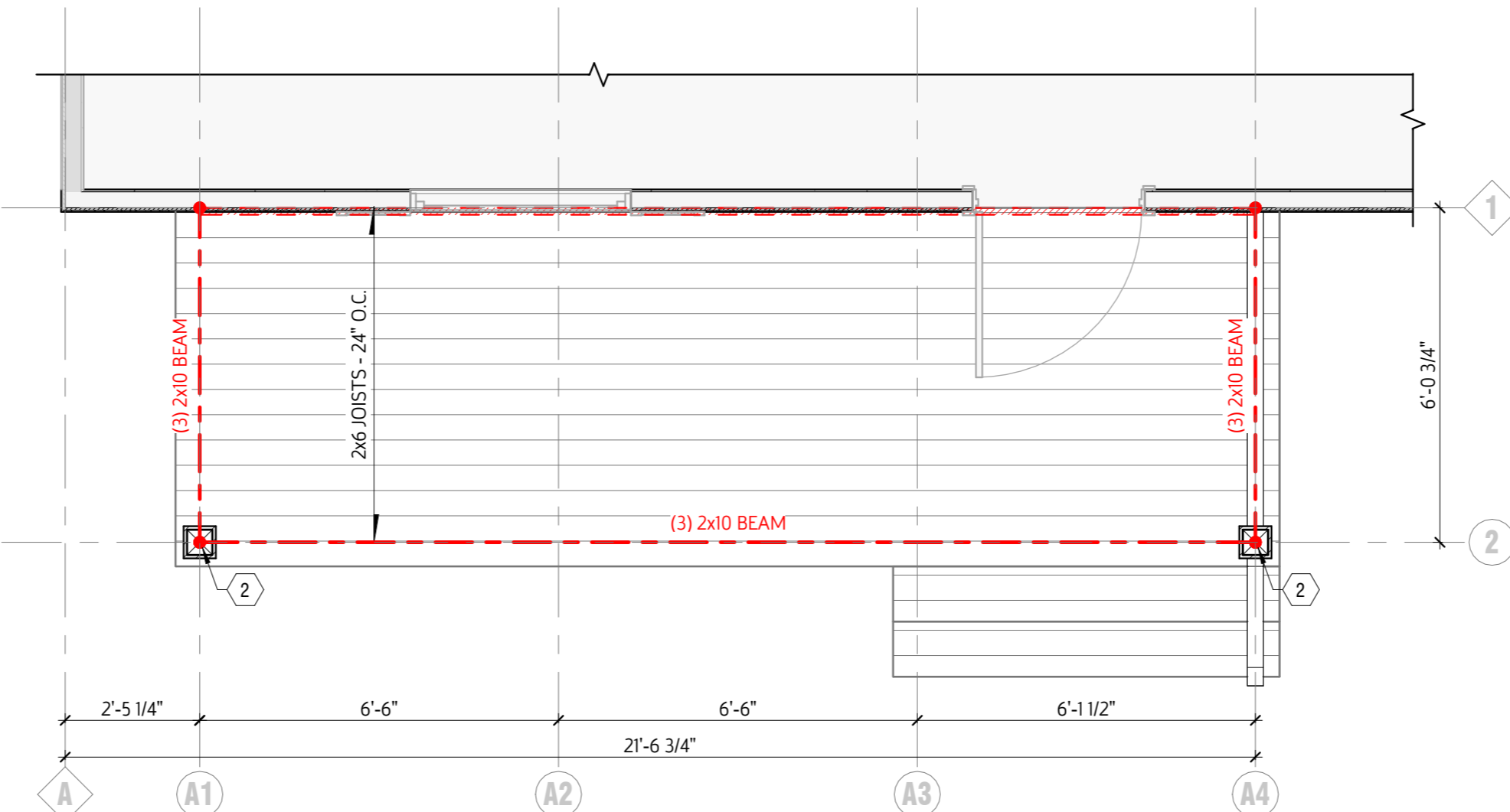
2 RCP ELECTRIC PLAN  
SCALE 3/8" = 1'-0"



1 PORCH PLAN  
SCALE 3/8" = 1'-0"



5 PORCH FOUNDATION/FRAMING  
SCALE 3/8" = 1'-0"



4 PORCH ROOF FRAMING  
SCALE 3/8" = 1'-0"

# CODED NOTES

- ENGINEERED DECKING - TIMBERTECH COMPOSITE IN SEA SALT GRAY FINISH. RUN NORTH/SOUTH.
- 6x6 PRESSURE TREATED MOISTURE RESISTANT WOOD POST ON MIN. 12" DIAMETER CONCRETE FOUNDATION EXTENDED BELOW FROST LINE.
- 4x4 PRESSURE TREATED MOISTURE RESISTANT WOOD POST ON MIN. 8" DIAMETER CONCRETE FOUNDATION EXTENDED BELOW FROST LINE. PROVIDED FOR MIDSPAN STAIR SUPPORT.
- WRAP STRUCTURE IN CEDAR. FINISH WITH CLEAR COAT SEALANT.
- 1X6 CEDAR PLANK TONGUE AND GROOVE. FINISH WITH CLEAR COAT SEALANT.
- TOP MOUNTED RAILING MIN. 36" HIGH. TREX PRODUCT IN WHITE WITH BLACK SPINDLES.
- BEAM AS SHOWN IN STRUCTURAL PLAN.
- PROVIDE EXTRA STRINGERS ON EXTERIOR PORCH STAIRS.
- BLACK STANDING SEAM METAL ROOF. PROVIDE MIN. 2 LAYERS OF UNDERLAYMENT OR FULL ICEWATER SHIELD.
- 4" EXTERIOR RATED CAN LIGHT
- WALL SCONCE - ORIGIN21 "GLEN HOLLOW" LED BLACK FINISH
- MISC. TRIM AND SOFFIT IN WHITE VINYL
- BLACK METAL GUTTER
- NOTCH RIM JOIST INTO 6X6 POST. SECURE TO POST WITH MIN. (2) 1/2" DIAMETER GALVANIZED THRU BOLTS AT POST/JOIST CONNECTION SPACED MIN. 5' APART.
- DEMO EXISTING BRICK PORCH AND ROOF.

GENERAL NOTES

- REFER TO EXPANDED SYMBOL LEGEND FOR ADDITIONAL INFORMATION ON THE INDEX SHEET
- EXTERIOR PLAN DIMENSIONS ARE MEASURED TO FACE OF SHEATHING/FACE OF BLOCK/FACE OF CONCRETE/CENTER OF GRID LINE WHERE APPLICABLE
- INTERIOR PLAN DIMENSIONS ARE MEASURED TO FACE OF STUD/FACE OF BLOCK/FACE OF CONCRETE/CENTER OF GRID LINE WHERE APPLICABLE
- INTERIOR DOOR OPENINGS NOT LOCATED BY DIMENSION ARE TO BE LOCATED 4 1/2" OFF OF ADJACENT PERPENDICULAR WALL UNLESS OTHERWISE NOTED
- WINDOW AND DOOR OPENING DIMENSIONS W/ "R.O." REPRESENT ROUGH OPENINGS. MANUFACTURER TO ACCOUNT FOR SHIM SPACE.
- WINDOW AND DOOR OPENING DIMENSIONS ARE TO THE OUTSIDE OF OPENING. REFER TO CUT SHEETS FOR ROUGH OPENINGS. MANUFACTURER TO ACCOUNT FOR SHIM SPACE
- PROVIDE ALL REQUIRED BLOCKING, FURRING, AND BACK FOR ANY WALL-MOUNTED FIXTURES, SHELVING AND ACCESSORIES.
- CONTRACTORS SHALL COORDINATE THE SIZE AND LOCATION OF ALL NEW M.E.P. ITEMS OR OPENINGS W/THE APPROPRIATE CONTRACTOR
- PLUMBING FIXTURES, SINKS, ELECTRIC WATER COOLERS, WATER CLOSETS, URINALS, ETC. ARE TO BE CENTERED W/CABINETS, PARTITIONS, AND FRAMED OPENINGS. U.N.O. ON ENLARGED PLANS / ELEVATIONS

PLAN LEGEND

- NOT ALL PLAN SYMBOLS MAY BE USED ON EACH SHEET

NEW WALL ASSEMBLY	EXISTING WALL ASSEMBLY
SHEAR WALL REFER TO STRUCTURE	DEMOLISHED WALL ASSEMBLY /ELEMENT
INDICATES TYPE A UNIT IS BEING ILLUSTRATED	NEW DOOR NUMBER "#"- REFER TO DOOR SCHEDULE (A6.00)
NEW GLAZING ASSEMBLY "A"- SEE GLAZING ELEVATIONS	EXISTING DOOR NUMBER "#"- REFER TO DOOR SCHEDULE
INDICATES COLUMN LINE	EXISTING GLAZING ASSEMBLY

CODE DATA

2019 OHIO RESIDENTIAL CODE

DESIGN LIVE LOADS

ROOF	25 PSF (GROUND SNOW)
CEILING JOISTS (HIGH SLOPE)	20 PSF
CEILING JOISTS (LOW SLOPE)	10 PSF
FLOORS/STAIRS/DECKS	40 PSF

Bexley Front Porch

Porch Addition

236 N Roosevelt Ave, Columbus, OH 43209

DRAWING SET

<input type="checkbox"/>	7/17/2025	PROGRESS
<input type="checkbox"/>		FINAL COORDINATION
<input type="checkbox"/>		BID
<input type="checkbox"/>	7/1/2025	PERMIT
<input type="checkbox"/>		CONSTRUCTION

REVISIONS

▲	
▲	
▲	
▲	
▲	
▲	
▲	
▲	

SEAL

PROJECT NUMBER

025012

SHEET TITLE

DECK PLANS

SHEET NUMBER

A

A100

# CODED NOTES

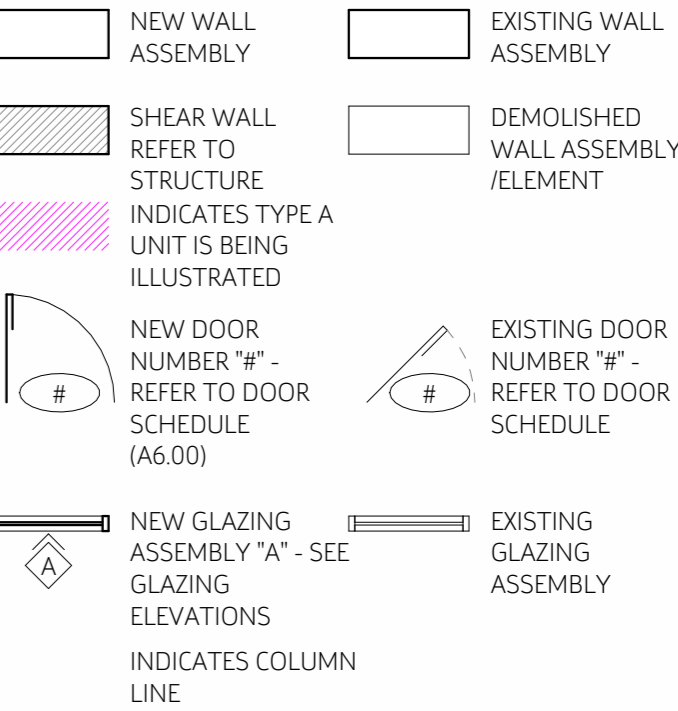
- ENGINEERED DECKING - TIMBERTECH COMPOSITE IN SEA SALT GRAY FINISH. RUN NORTH/SOUTH.
- 6x6 PRESSURE TREATED MOISTURE RESISTANT WOOD POST ON MIN. 12" DIAMETER CONCRETE FOUNDATION EXTENDED BELOW FROST LINE.
- 4x4 PRESSURE TREATED MOISTURE RESISTANT WOOD POST ON MIN. 8" DIAMETER CONCRETE FOUNDATION EXTENDED BELOW FROST LINE. PROVIDED FOR MIDSPAN STAIR SUPPORT.
- WRAP STRUCTURE IN CEDAR. FINISH WITH CLEAR COAT SEALANT.
- 1X6 CEDAR PLANK TONGUE AND GROOVE. FINISH WITH CLEAR COAT SEALANT.
- TOP MOUNTED RAILING MIN. 36" HIGH. TREX PRODUCT IN WHITE WITH BLACK SPINDLES.
- BEAM AS SHOWN IN STRUCTURAL PLAN.
- PROVIDE EXTRA STRINGERS ON EXTERIOR PORCH STAIRS.
- BLACK STANDING SEAM METAL ROOF. PROVIDE MIN. 2 LAYERS OF UNDERLAYMENT OR FULL ICE/WATER SHIELD.
- 4" EXTERIOR RATED CAN LIGHT
- WALL SCONCE - ORIGIN21 "GLEN HOLLOW" LED BLACK FINISH
- MISC. TRIM AND SOFFIT IN WHITE VINYL
- BLACK METAL GUTTER
- NOTCH RIM JOIST INTO 6X6 POST. SECURE TO POST WITH MIN. (2) 1/2" DIAMETER GALVANIZED THRU BOLTS AT POST/JOIST CONNECTION SPACED MIN. 5' APART.
- DEMO EXISTING BRICK PORCH AND ROOF.

GENERAL NOTES

- REFER TO EXPANDED SYMBOL LEGEND FOR ADDITIONAL INFORMATION ON THE INDEX SHEET
- EXTERIOR PLAN DIMENSIONS ARE MEASURED TO FACE OF SHEATHING/FACE OF BLOCK/FACE OF CONCRETE/CENTER OF GRID LINE WHERE APPLICABLE
- INTERIOR PLAN DIMENSIONS ARE MEASURED TO FACE OF STUD/FACE OF BLOCK/FACE OF CONCRETE/CENTER OF GRID LINE WHERE APPLICABLE
- INTERIOR DOOR OPENINGS NOT LOCATED BY DIMENSION ARE TO BE LOCATED 4 1/2" OFF OF ADJACENT PERPENDICULAR WALL UNLESS OTHERWISE NOTED
- WINDOW AND DOOR OPENING DIMENSIONS W/ "R.O." REPRESENT ROUGH OPENINGS. MANUFACTURER TO ACCOUNT FOR SHIM SPACE.
- WINDOW AND DOOR OPENING DIMENSIONS ARE TO THE OUTSIDE OF OPENING. REFER TO CUT SHEETS FOR ROUGH OPENINGS. MANUFACTURER TO ACCOUNT FOR SHIM SPACE
- PROVIDE ALL REQUIRED BLOCKING, FURRING, AND BACK FOR ANY WALL-MOUNTED FIXTURES, SHELVING AND ACCESSORIES.
- CONTRACTORS SHALL COORDINATE THE SIZE AND LOCATION OF ALL NEW M.E.P. ITEMS OR OPENINGS W/THE APPROPRIATE CONTRACTOR
- PLUMBING FIXTURES, SINKS, ELECTRIC WATER COOLERS, WATER CLOSETS, URINALS, ETC. ARE TO BE CENTERED W/CABINETS, PARTITIONS, AND FRAMED OPENINGS. U.N.O. ON ENLARGED PLANS / ELEVATIONS

PLAN LEGEND

- NOT ALL PLAN SYMBOLS MAY BE USED ON EACH SHEET



CODE DATA

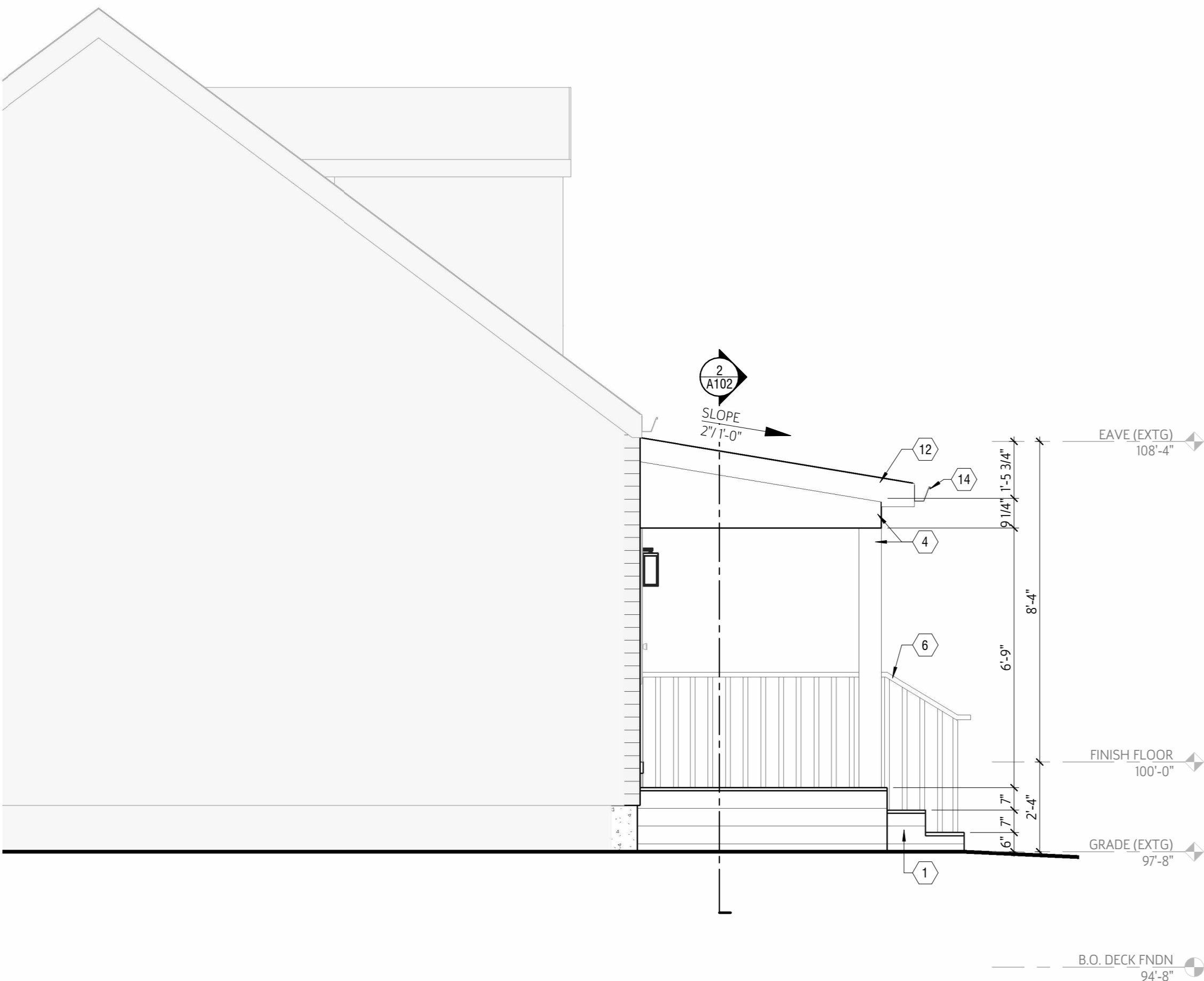
2019 OHIO RESIDENTIAL CODE

DESIGN LIVE LOADS

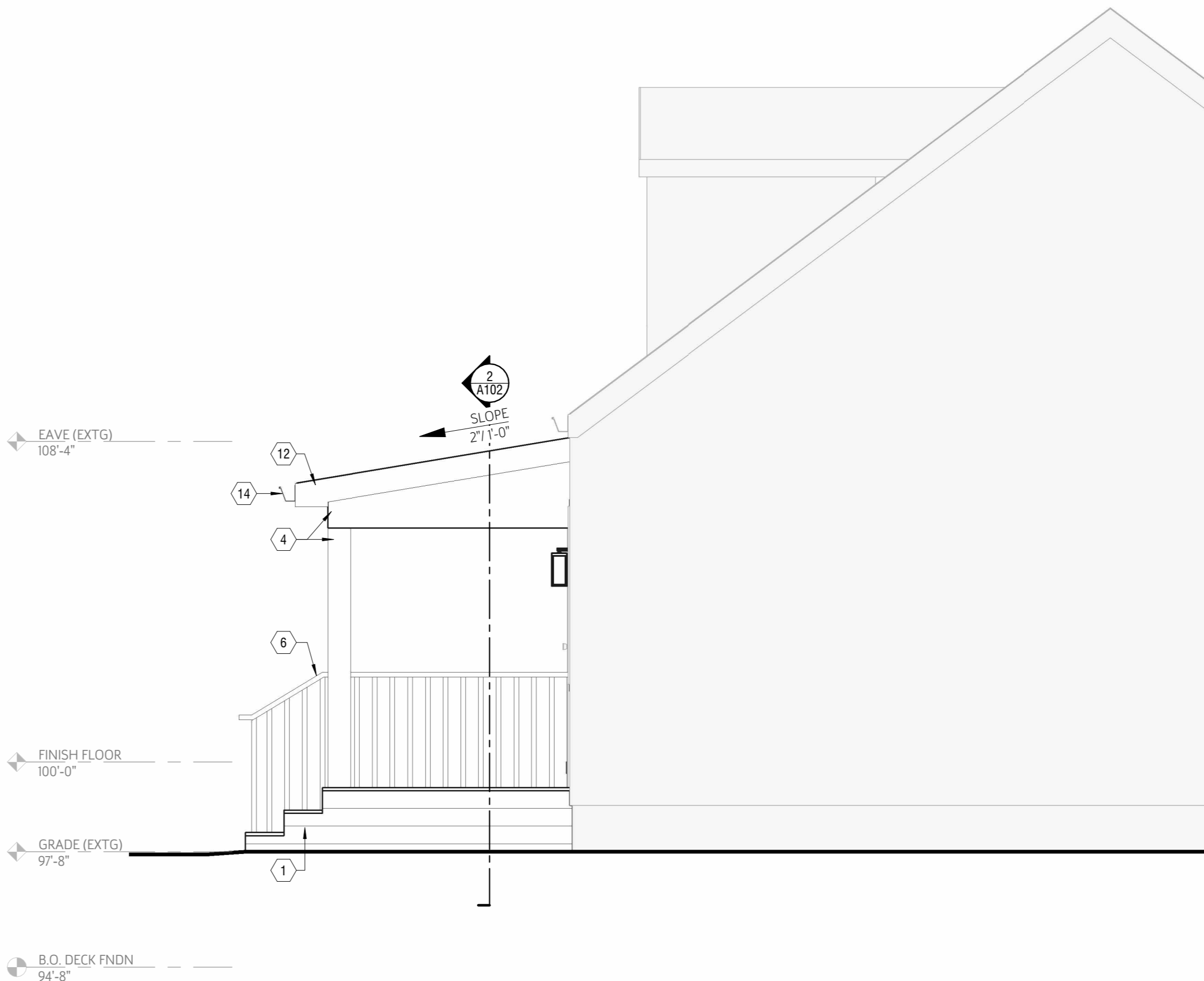
ROOF	25 PSF (GROUND SNOW)
CEILING JOISTS (HIGH SLOPE)	20 PSF
CEILING JOISTS (LOW SLOPE)	10 PSF
FLOORS/STAIRS/DECKS	40 PSF



1 ELEVATION - WEST  
SCALE 3/8" = 1'-0"



2 ELEVATION - NORTH  
SCALE 3/8" = 1'-0"



3 ELEVATION - SOUTH  
SCALE 3/8" = 1'-0"

Bexley Front Porch

Porch Addition

236 N Roosevelt Ave, Columbus, OH 43209

DRAWING SET

<input type="checkbox"/>	7/17/2025	PROGRESS
<input type="checkbox"/>		FINAL COORDINATION
<input type="checkbox"/>		BID
<input type="checkbox"/>	7/1/2025	PERMIT
<input type="checkbox"/>		CONSTRUCTION

REVISIONS

△	
△	
△	
△	
△	
△	
△	
△	
△	
△	

SEAL

NOT FOR  
CONSTRUCTION

PROJECT NUMBER

025012

SHEET TITLE

ELEVATIONS

SHEET NUMBER

A

A101

N. ROOSEVELT AVE

SIDEWALK

60'-0" LOT WIDTH

EXISTING  
DRIVEWAY

9'-0"

20'-0"

1'-0"

SIDEWALK

PROPOSED PORCH

30' FRONT SETBACK

EXISTING HOME

8' SIDE SETBACK

8' SIDE SETBACK

40'-0"

15'-0"

36'-0"

9'-0"

30'-0"

EXISTING GARAGE

22'-0"

15'-0"

25' REAR SETBACK

138'-0" LOT DEPTH

SIDEWALK



1

# SITE PLAN ARB

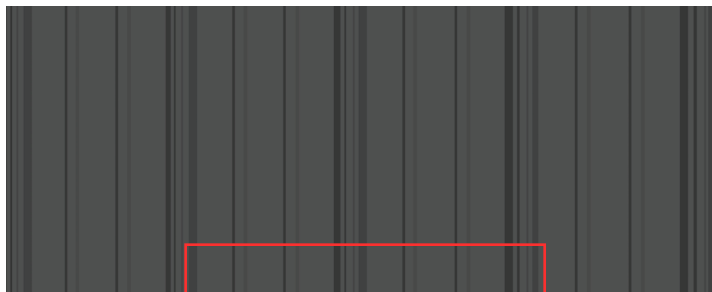
SCALE 3/32" = 1'-0"

# DESIGNER STEEL SERIES

The Designer Steel series features enhanced paint technology that eliminates the shine and glare of typical panels to create a rich, soft appearance, while still delivering the performance and durability of steel. The Designer Series is perfect for any roofing or siding application.



**DOVER GRAY**



**KNIGHTS ARMOR**



**SANDY CLAY**



**SMOKY SABLE**

- Available in 4 popular colors
- Low shine matte paint system
- Cool Chemistry Technology for energy efficiency
- Zinc pre-treatment
- UL 2218 Class 4 Hail Resistance
- UL 790 Class A Fire Resistance
- UL 580 Class 90 Wind Uplift
- Structural strength ASTM-A653
- Coil coating “paint” process ASTM-A755

For complete details on Underwriters Laboratory product certifications see [www.ul.com](http://www.ul.com)

Note: Color chips show approximate tone. Color of actual product may vary.  
Final color approval should be made with actual material.

