

236 North Columbia Avenue

PLANT SURVEY *			
A	LIQUIDAMBAR styraciflua	Sweetgum	Existing Street Tree- protected
B	ACER saccharum	Sugar Maple	Existing Street Tree- protected
C	ACER saccharum	Sugar Maple	Existing Street Tree- protected
D	TSUGA canadensis	Canadian Hemlock	11" average caliper 16 trees to be removed
E	TSUGA canadensis	Canadian Hemlock	12.5" caliper Remove
F	ACER saccharum	Sugar Maple	30" caliper Keep and protect
G	Mixed understory and volunteers	TAXUS media	5" shrubs To Remove
		White Ash	Under 6" caliper To Remove
		Canadian Hemlock	Average 10" caliper 25 trees to be removed
H	TSUGA canadensis	Canadian Hemlock	11.5" caliper Keep and protect
I	CORNUS Mas	Cornelian Cherry	10' shrubs Remove
J	AMUR Lonicera maackii	Amur Honeysuckle	12' tall Invasive- remove
K	PINUS resinosa	Red Pine	21.5" caliper Covered in Wisteria- remove
L	AMUR Lonicera maackii	Amur Honeysuckle	12' tall Invasive- remove
M	QUERCUS rubra	Northern Red Oak	43" caliper To Remove
N	QUERCUS rubra	Northern Red Oak	32.5" caliper To Remove
O	QUERCUS rubra	Northern Red Oak	34" caliper To Remove
P	ACER palmatum	Japanese Maple	5.5" caliper To Remove
Q	ACER griseum	Paperbark Maple	13.5" caliper To Remove
R	ACER rubrum	Red Maple	40" caliper Remove
S	THUJA occidentalis	American Arborvitae	12" tall shrubs Remove
T	LIGUSTRUM vulgare	Common Privet	4' tall hedge To Remove
U	Volunteer trees	Celtis occidentalis- Hackberry	9" caliper Volunteer- in fence- remove
		ACER negundo- Boxelder	11" caliper Volunteer- in fence- remove
		PRUNUS serotina- Black Cherry	8" caliper Volunteer- in fence- remove
		KOELREUTERIA paniculata-GoldenRain Tree	12" Volunteer- in fence- remove
V	GLEDITSIA tricanthos	Honey Locust	34.5" caliper Keep and protect
W	PRUNUS calleryana	Bradford Pear	Average 27" caliper Remove 10 trees
X	GINKGO biloba	Maidenhair	30" caliper Keep and protect
Y	MALUS x scheideckeri	Flowering Crabapple	8.5" caliper 2 trees - remove
Z	TSUGA canadensis	Canadian Hemlock	12" caliper 4 trees - remove

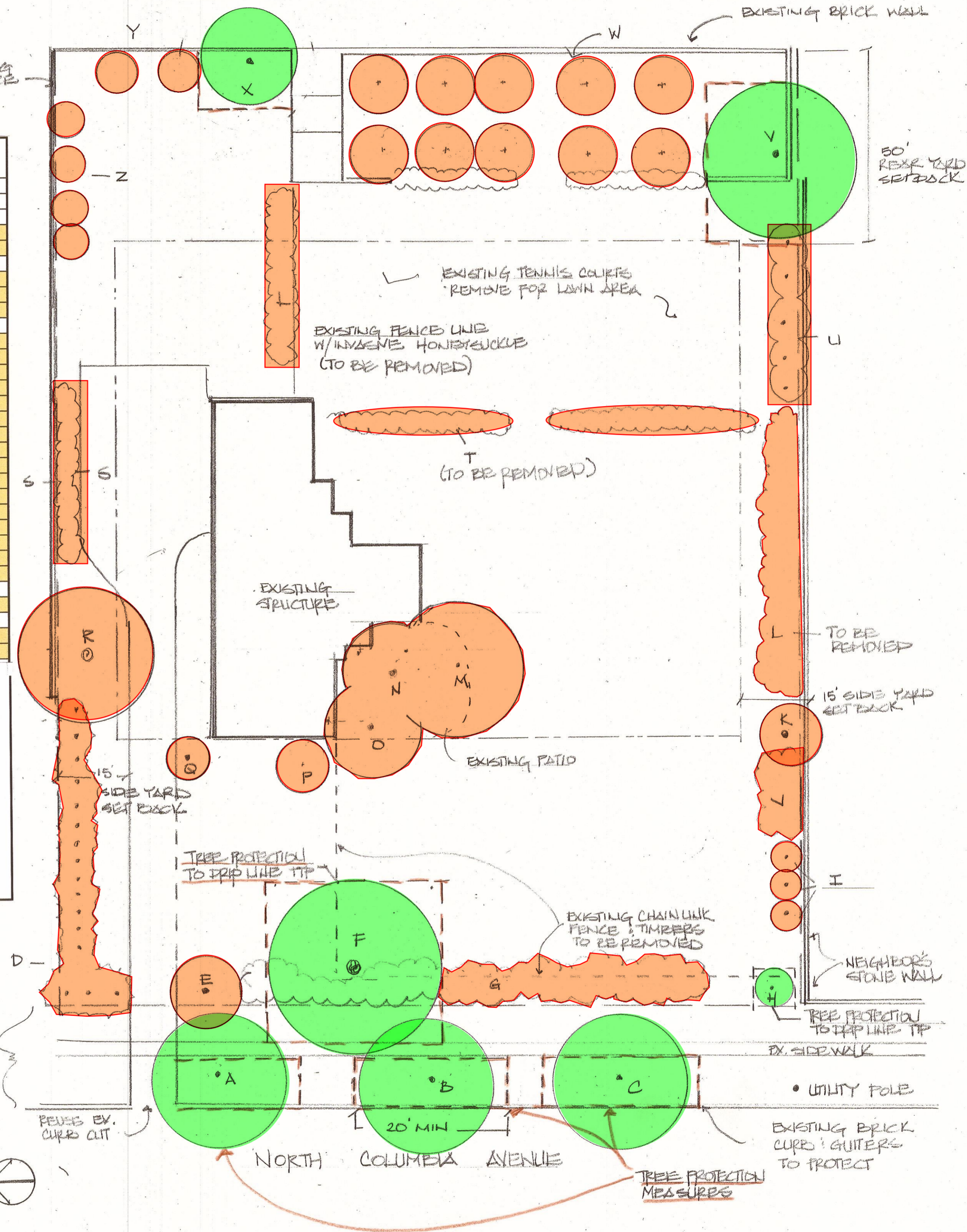
Total Caliper of Trees 1065 inches
Total Caliper Removals 959 inches

* Details on the condition of the existing trees can be found in the included report from the Master Arborist.

Summary of Tree Removal and Plantings

Removals	
3	Red Oak
10	Bradford Pear
1	Red Pine
46	Canadian Hemlock
4	Ornamental Trees
Miscellaneous Volunteer trees, old and invasive shrubs	
69	Main Tree Removals

New Trees		
11	Hornbeam	North of drive, front of house
9	Oaks	Secret Garden and South lawn
4	Birch	Secret Garden
23	Evergreens	North and South Property Lines
24	Ornamental	Throughout property
Mix of Evergreen and blooming shrubs, perennials		
71	Proposed Tree Plantings	



REVISIONS	BY
10/18/24	LF
10/31/24	LF

236 NORTH COLUMBIA AVE
BEXLEY, OH
SITE PLAN

landscape architecture
site planning
construction management

1425 Colburn Road, Suite 100
Columbus, Ohio 43229
(614) 286-3824

Oakland Design Associates



DRAWN	
L.F.	LOTKINE
CHECKED	
DATE	10/2/24
SCALE	1" = 20'-0"
JOB NO.	
SHEET	
OF	