

see (*)

COPYRIGHT©
 LAUERHASS ARCHITECTURE, LLC
 ALL RIGHTS RESERVED.
 THE ARCHITECT'S DRAWINGS AND OTHER WORK
 ARE FOR USE ONLY ON THIS PROJECT.
 THE ARCHITECT IS THE AUTHOR, AND RESERVES
 ALL RIGHTS. INFORMATION CONTAINED HEREIN
 SHALL NOT BE USED WITHOUT THE EXPRESS
 WRITTEN AUTHORIZATION OF THE ARCHITECT.

<u>Date:</u> 14 Feb 2024	<u>Drawing Title:</u> Exterior Elevations	<u>Scale:</u> 3/16" = 1'-0"
<u>Project Number:</u> 23-072	<u>Project Name:</u> Rottier-Bischoff Residence	<u>Sheet Number:</u> A-5



SIGN POST
 GATE
 CITY TREE CURB
 existing TREE ON PROPERTY LINE.
 HYDRANGEAS TO FRAME THE GATE
 CITY TREE CURB
 SIGN POST
 CITY TREE CURB

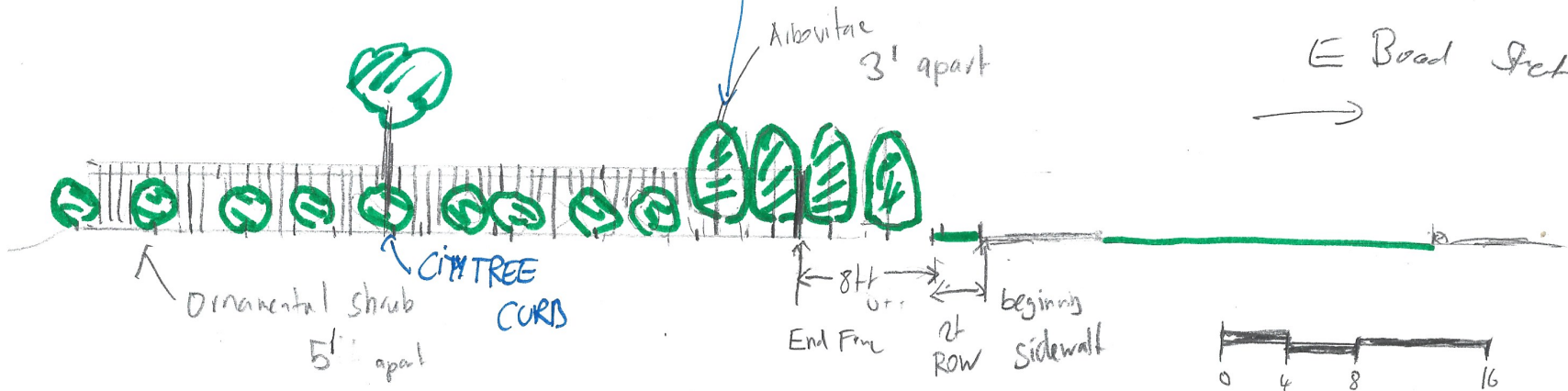


3/14/24

(4)
 (4) THUJA OCCIDENTALIS 'SMARAGD'
 EMERALD GREEN ARBOVITAE
 5' TALL 3' ON CENTER

⇔ N

⇨ E Road Jet



Ornamental shrub
 5' apart

CITY TREE CURB

Arbovitae
 3' apart

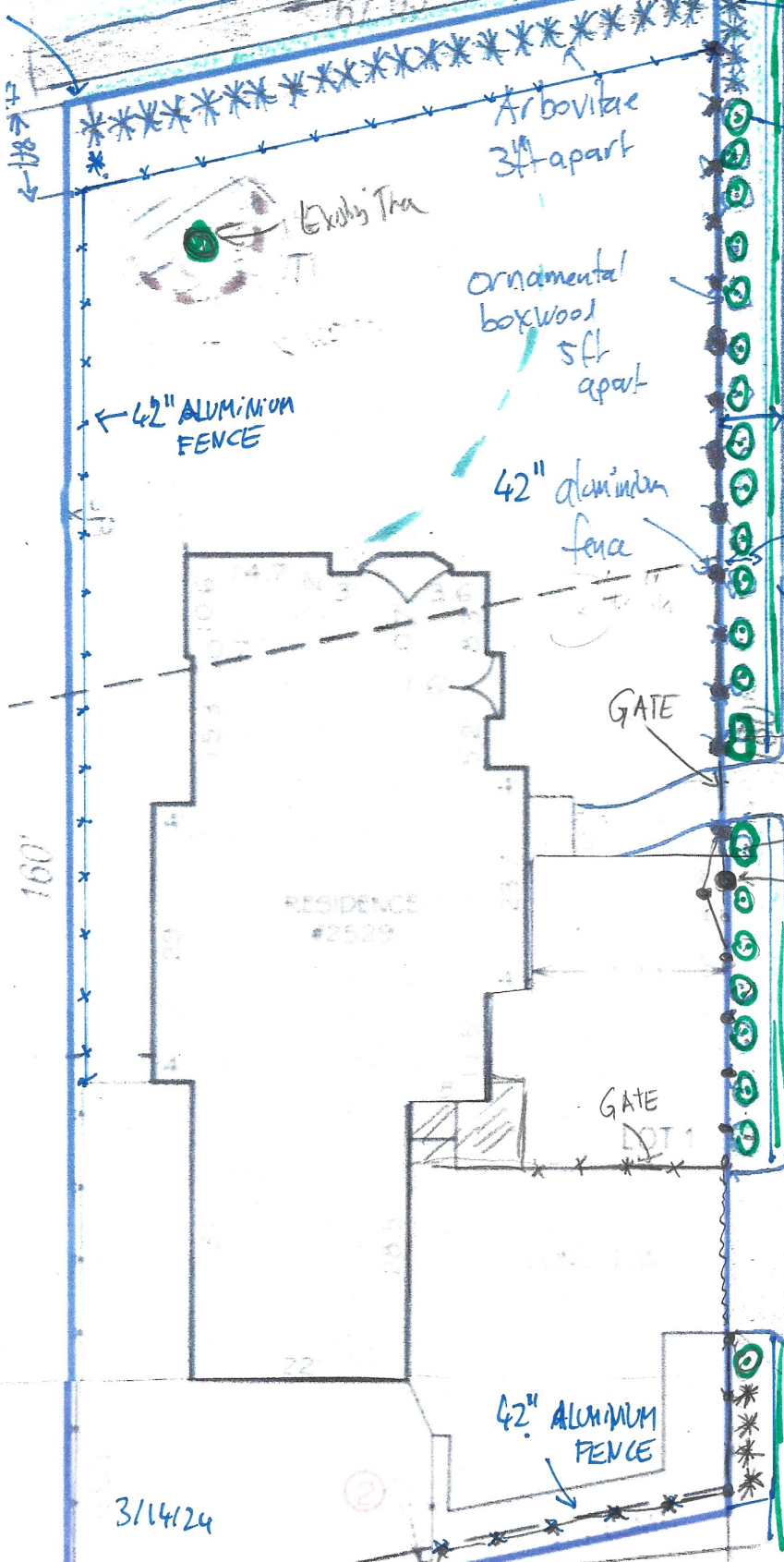
8ft
 End Fm
 2 Row
 beginning sidewalk



2529 E. BROAD ST



2' + lawn Row



- (2) THUYA OCCIDENTALIS + 4 ISMARAGD' / EMERALD GREEN ARBOVITAE 5' TALL; 3' ON CENTER
- (22) LLEY GLABRA 'SHAROCK' / INK BERRY 5' ON CENTER

6' 7" TO FENCE FROM SIDEWALK

~4' BED STREET SIGN 2' LAWN

CITY TREE HYDRENGEA

STREET SIGN

EXISTING TREE ON PROPERTY LINE CITY TREE

CASSADY ROAD (60' W/W)

3/14/24

2