

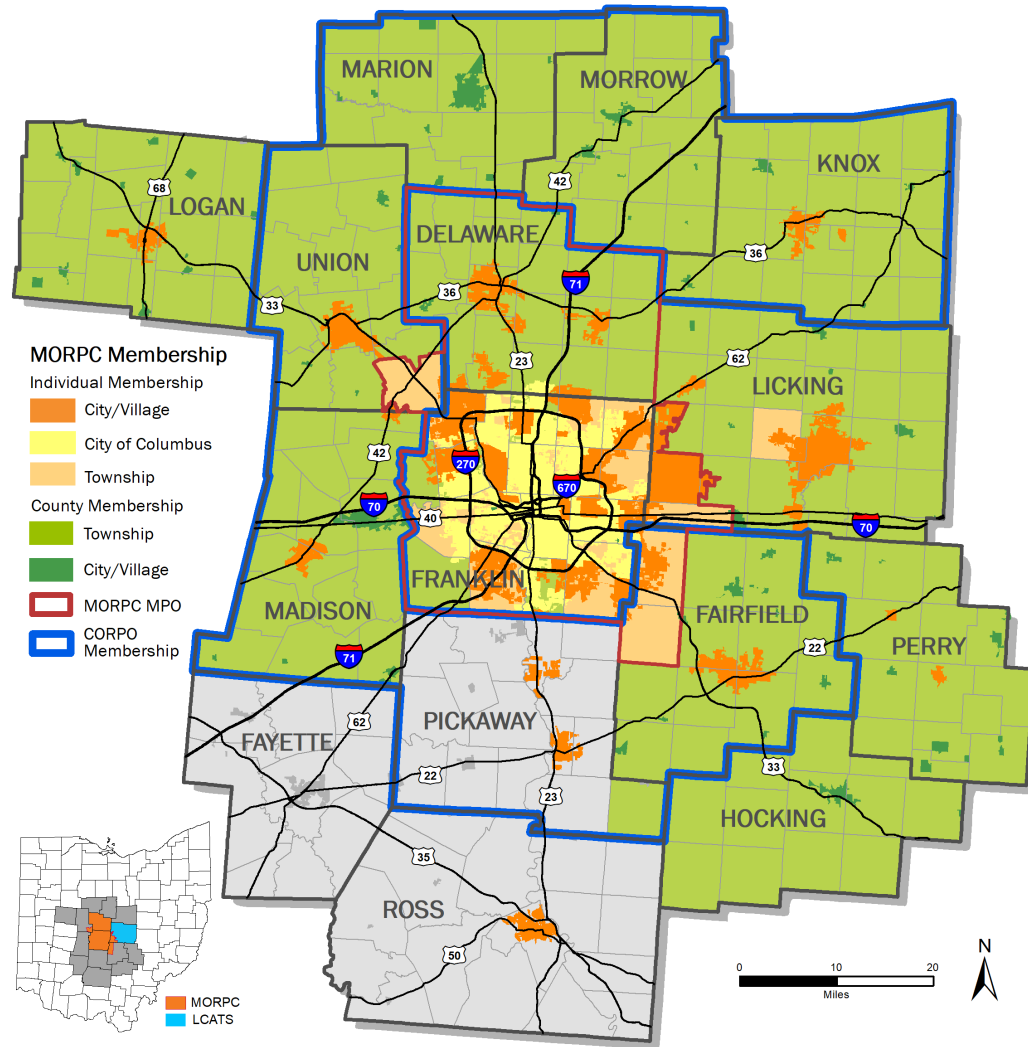
2024 - 2050 DRAFT METROPOLITAN TRANSPORTATION PLAN

Bexley City Council Meeting
February 27, 2024



MID-OHIO REGIONAL
MORPC
PLANNING COMMISSION

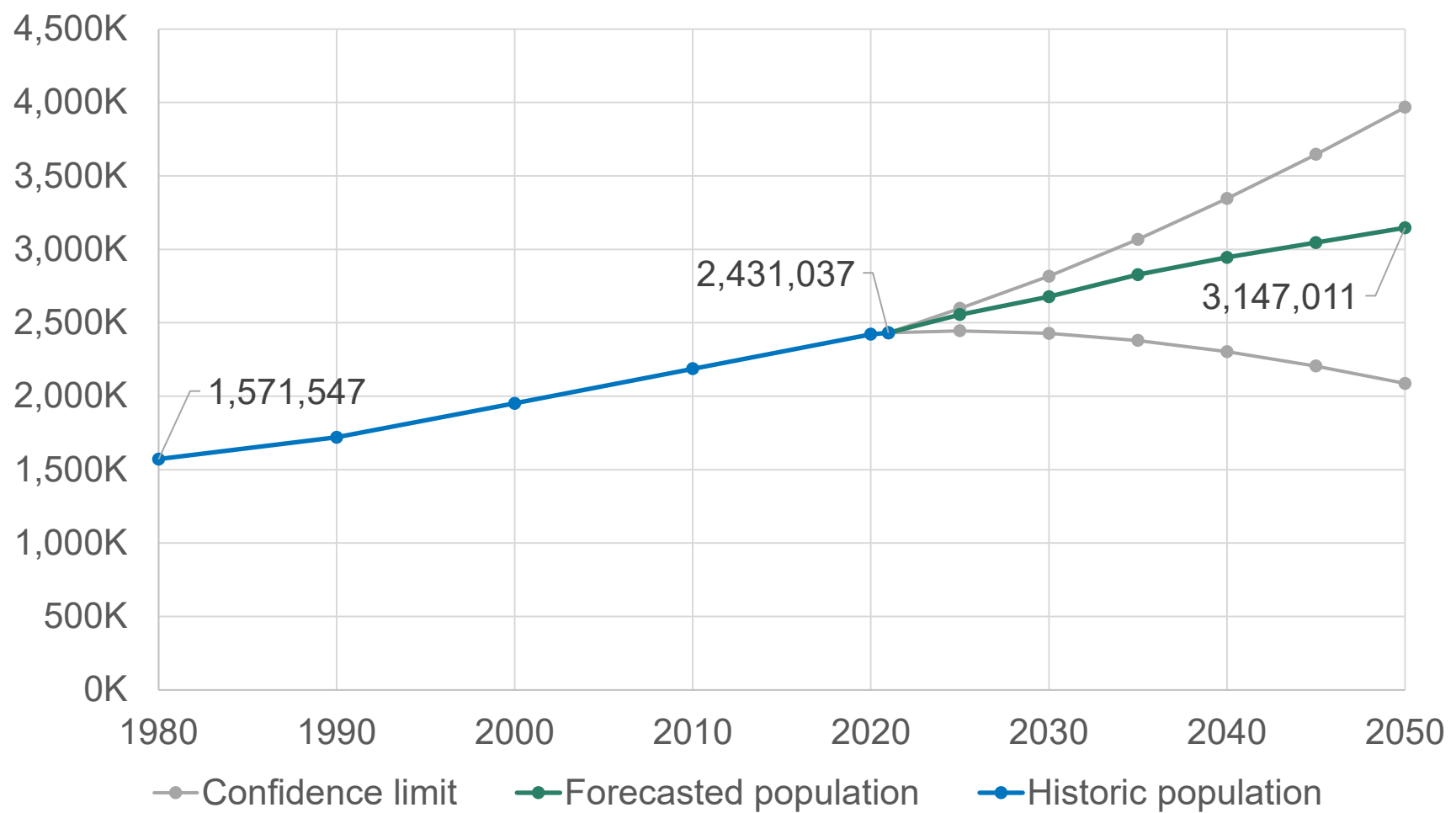
MID-OHIO REGIONAL PLANNING COMMISSION



- Regional Council for Columbus, Ohio Region
 - 2.4 million and growing
- Services for 85 Local Governments
 - Rural * Urban * Suburban
- Focus Areas:
 - Transportation & Infrastructure
 - Development Support (EDD)
 - Planning & Sustainability
 - Data, Research & Mapping
 - Residential Services
 - Policy & Grant Development
 - Engagement
- Key Partner to Businesses & Non-Profits



15-County Region Population





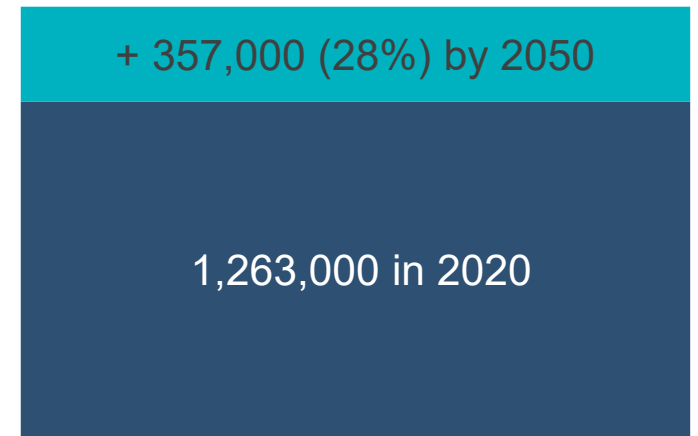
15-County Regional Growth



Population



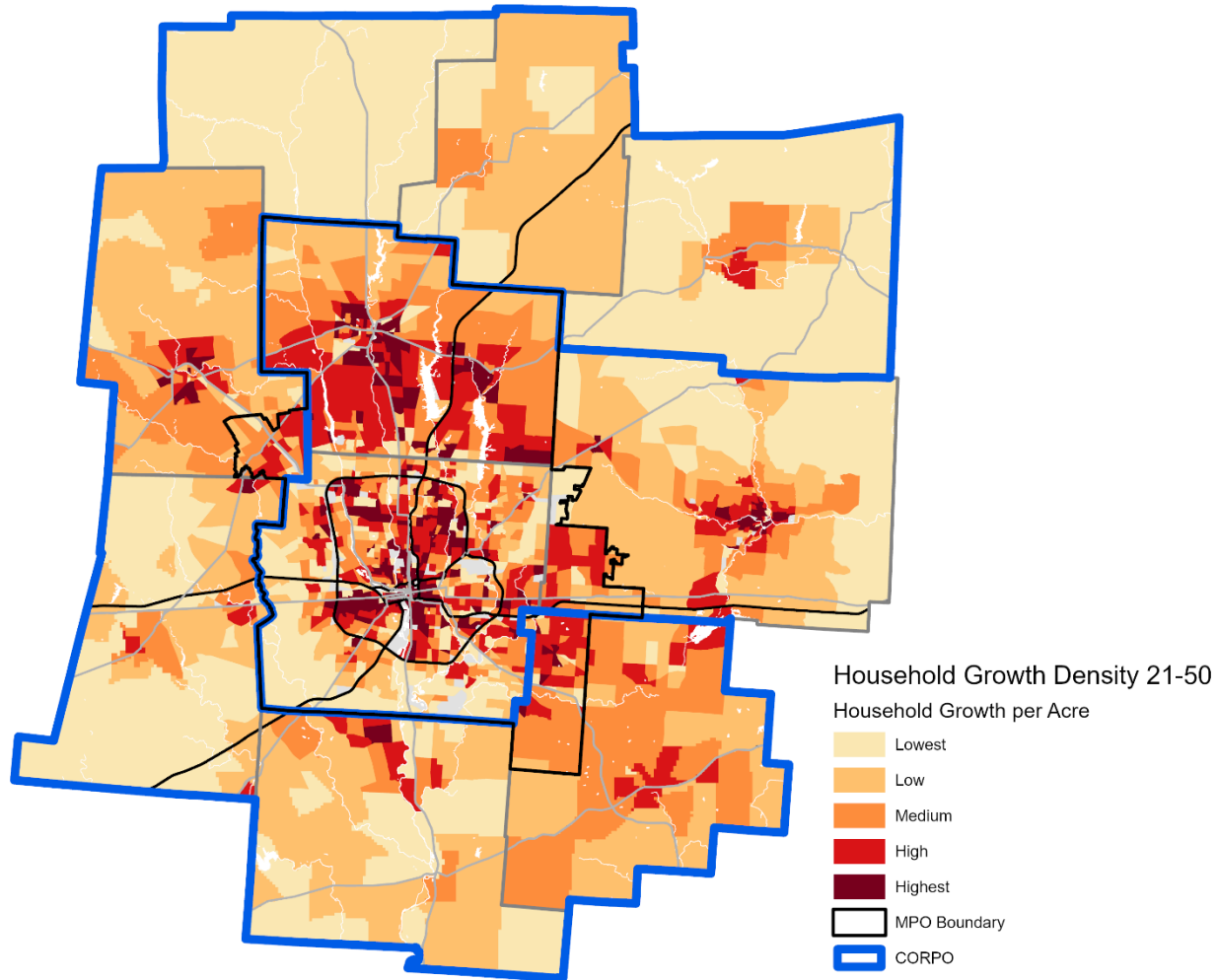
Households



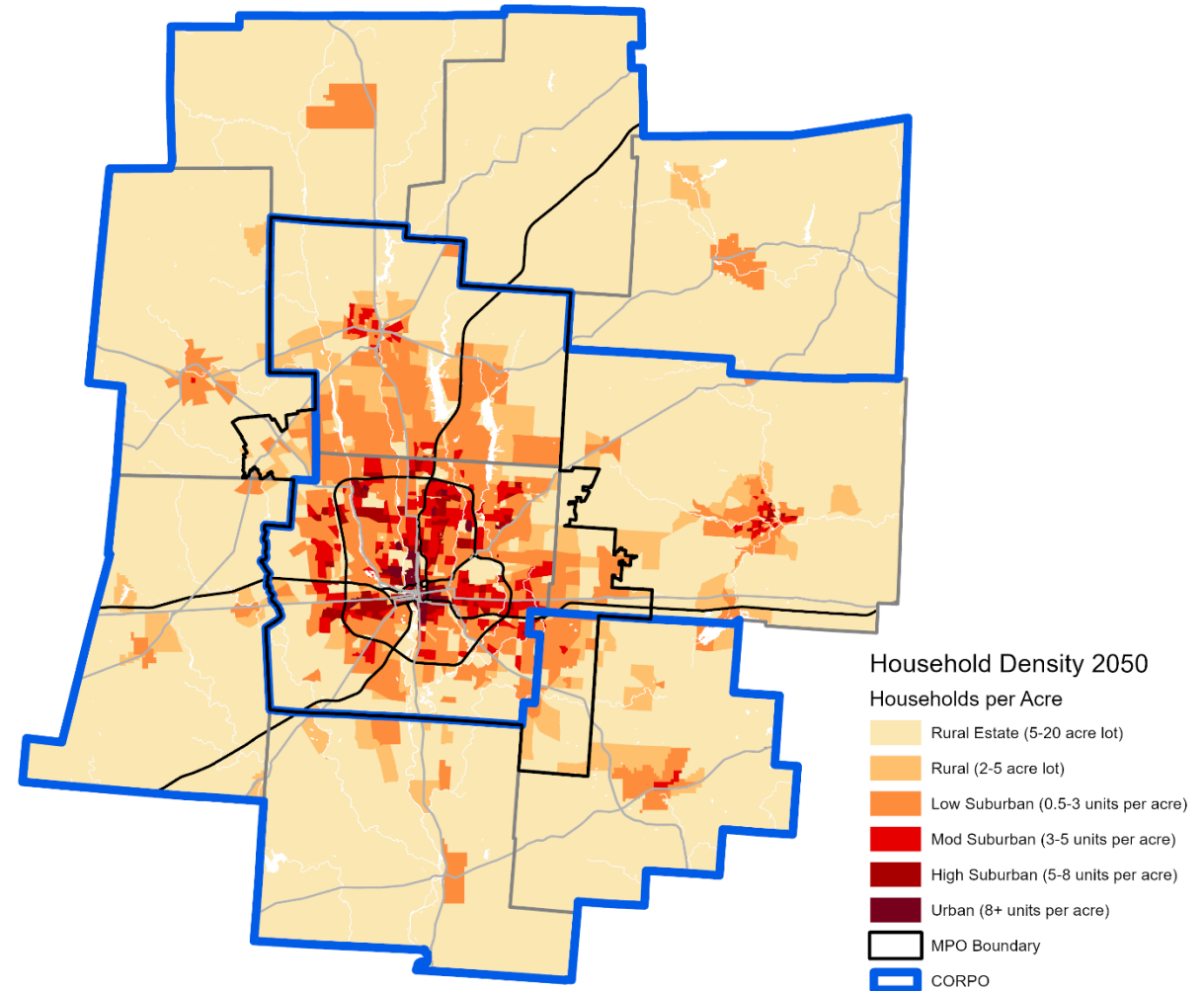
Labor force

2050 Households

Growth Density

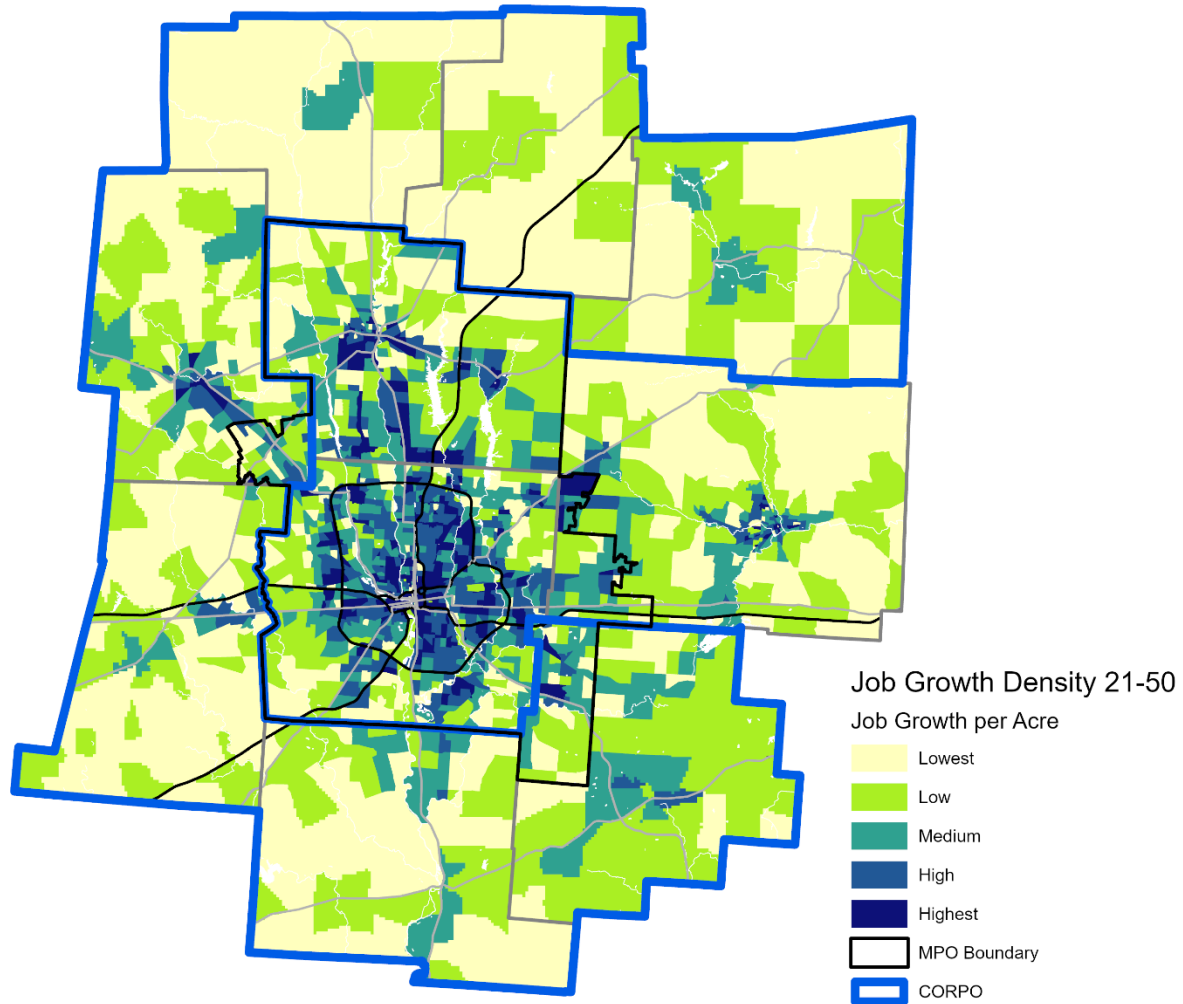


Total 2050 Density

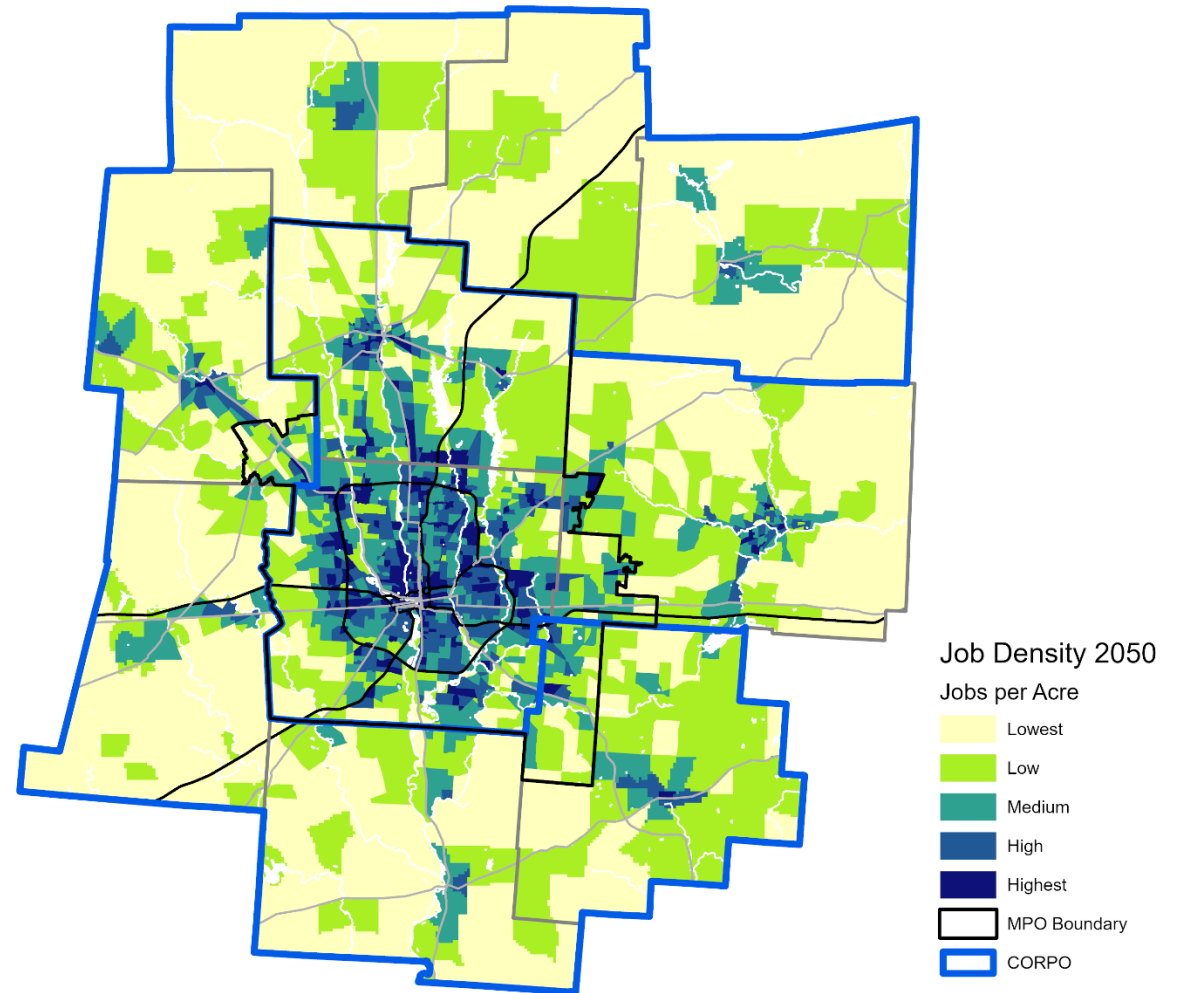


2050 Jobs

Growth Density



Total 2050 Density





MID-OHIO REGIONAL
MORPC
PLANNING COMMISSION

WHAT IS THE METROPOLITAN TRANSPORTATION PLAN (MTP)?

- Identifies regional transportation strategies and projects
- Long-range (20+ years)
- Fiscally constrained
- Formal document submitted to ODOT and USDOT every 4 years



WHY IS THE MTP IMPORTANT?

- **Central Ohio is growing**
 - Demographics are changing
 - Development is changing
 - Demands on the transportation system are changing
- **Transportation projects must be on MTP to be eligible for federal funding**
 - Formula & Discretionary (BIL)
 - Guides the work of MORPC and regional and local planning partners



By guiding investment in transportation and mobility infrastructure and services in Central Ohio, the MTP identifies strategies to advance the following six goals:



Create sustainable neighborhoods to improve all residents' quality of life.



Increase regional collaboration and employ innovative transportation solutions to maximize the return on public expenditures.



Position Central Ohio to attract and retain economic opportunity to prosper as a region and compete globally.



Provide transportation and mobility options to benefit the health, safety, and welfare of all people.

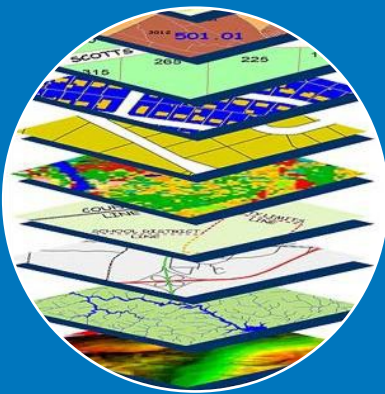


Protect natural resources and mitigate infrastructure vulnerabilities to maintain a healthy ecosystem and community.

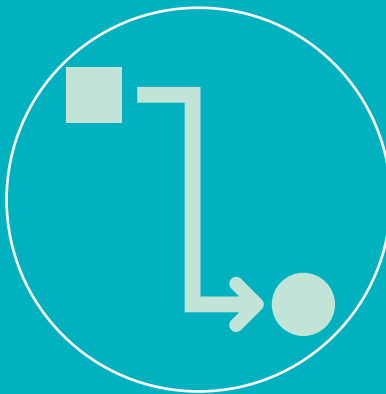


Reduce per capita energy consumption and promote alternative fuel resources to increase affordability and resilience of regional energy supplies.

2024-2050 COLUMBUS AREA METROPOLITAN TRANSPORTATION PLAN



Goals, Objectives &
Targets
Local & State Plans
Data



Pop/Emp Forecasting
Travel Demand Modeling
Project Evaluation
Fiscal Analysis
Impact Analyses



Regional Strategies
Priority Projects
Documentation



Public Participation



DRAFT STRATEGIES

- **System Management**

- Preservation & Maintenance
- Technology & Intelligent Transportation Systems
- Demand Management
- Safety & Security

- **System Development**

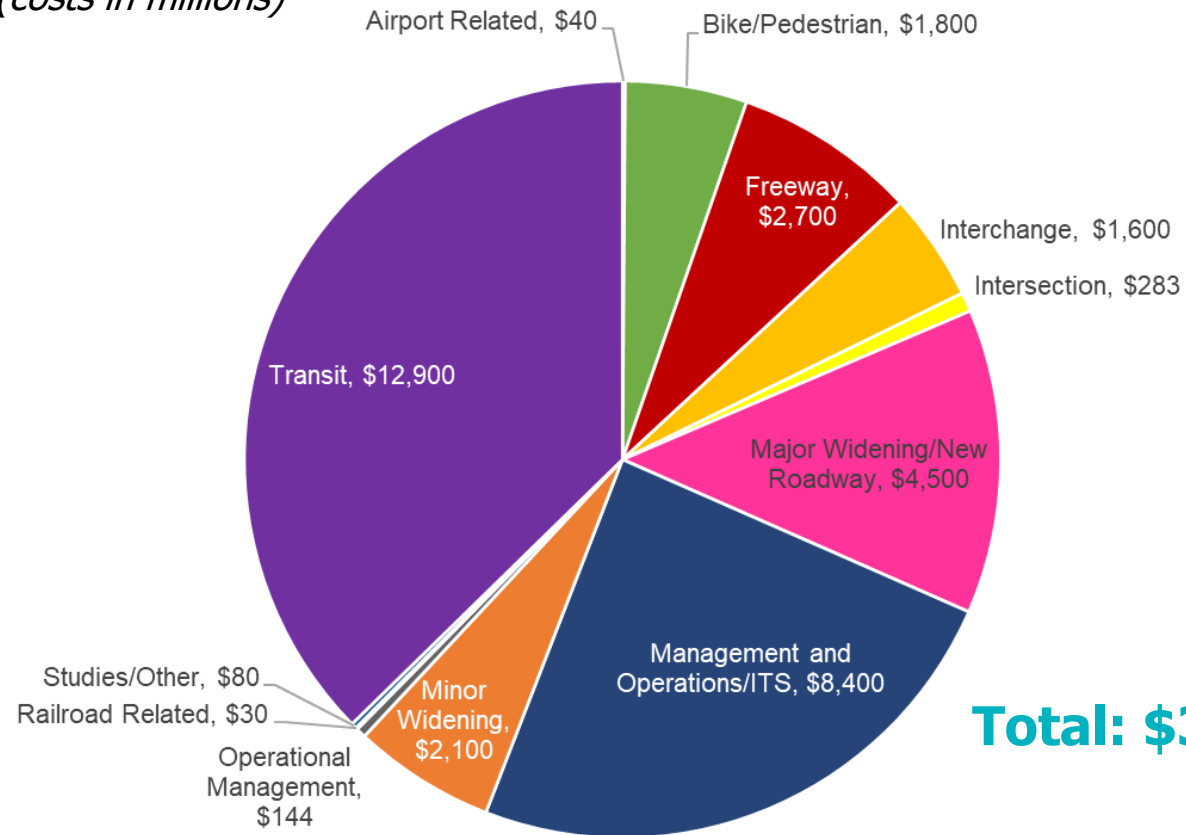
- Infrastructure Projects
 - Bike/Ped
 - Transit
 - Freight
 - Roadways
 - Multimodal Connections & Hubs

Full list of strategies available at: www.morpc.org/mtp2050



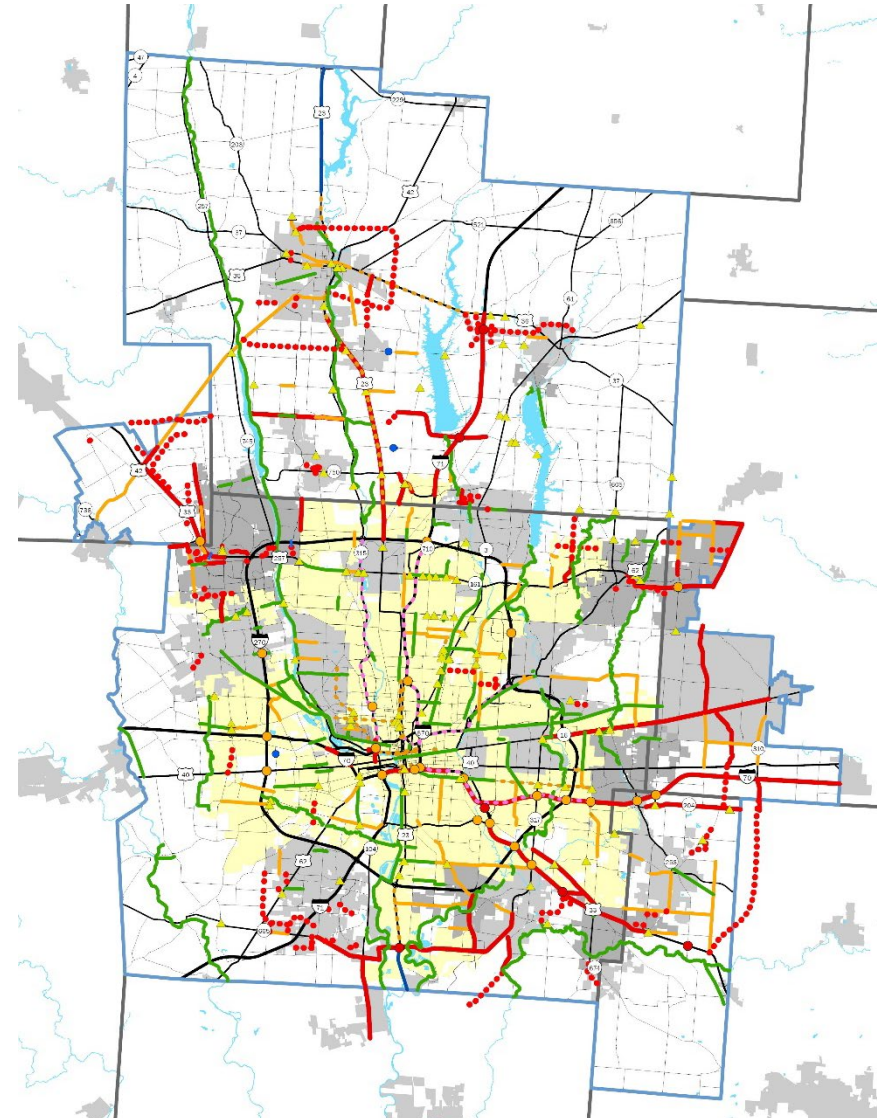
DRAFT PROJECTS

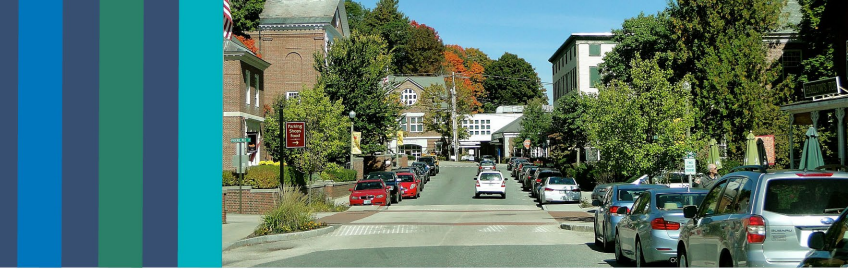
(costs in millions)



Total: \$35 billion

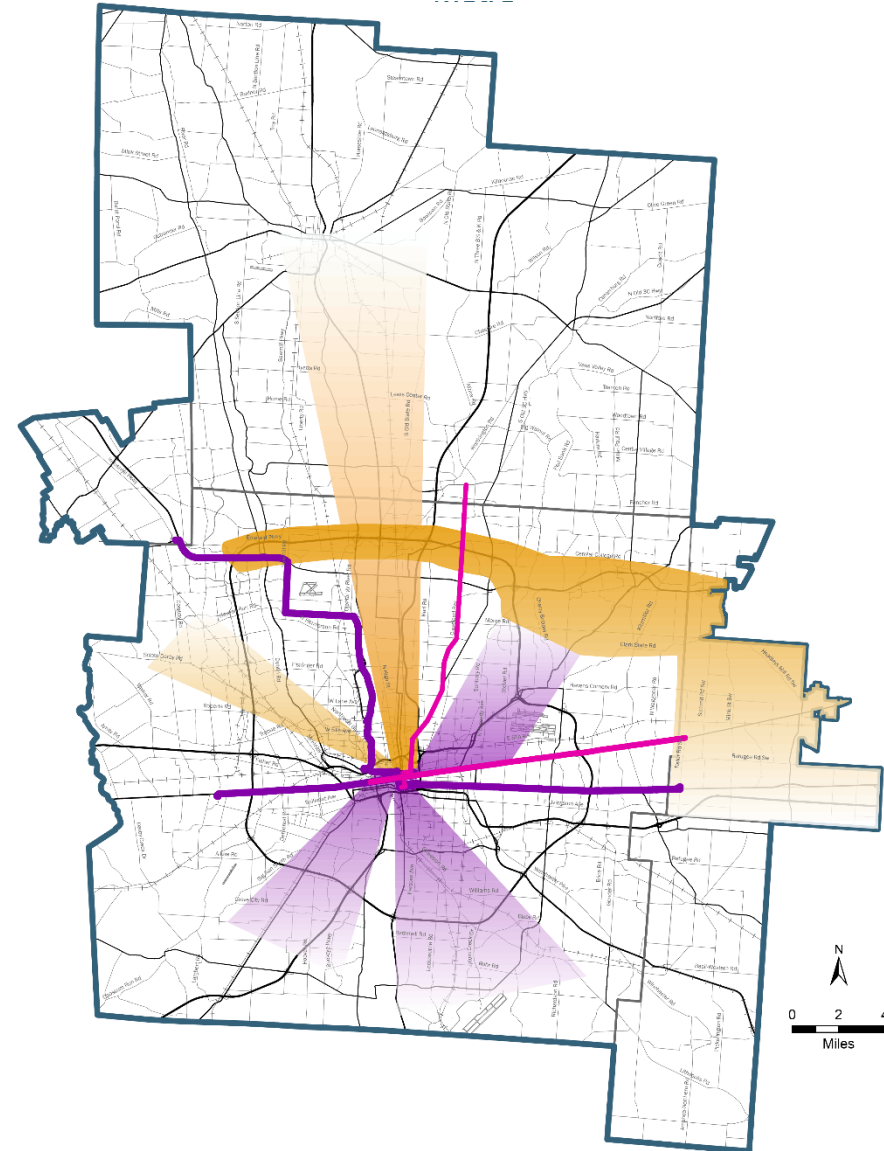
Webmap available at: www.morpc.org/mtp2050



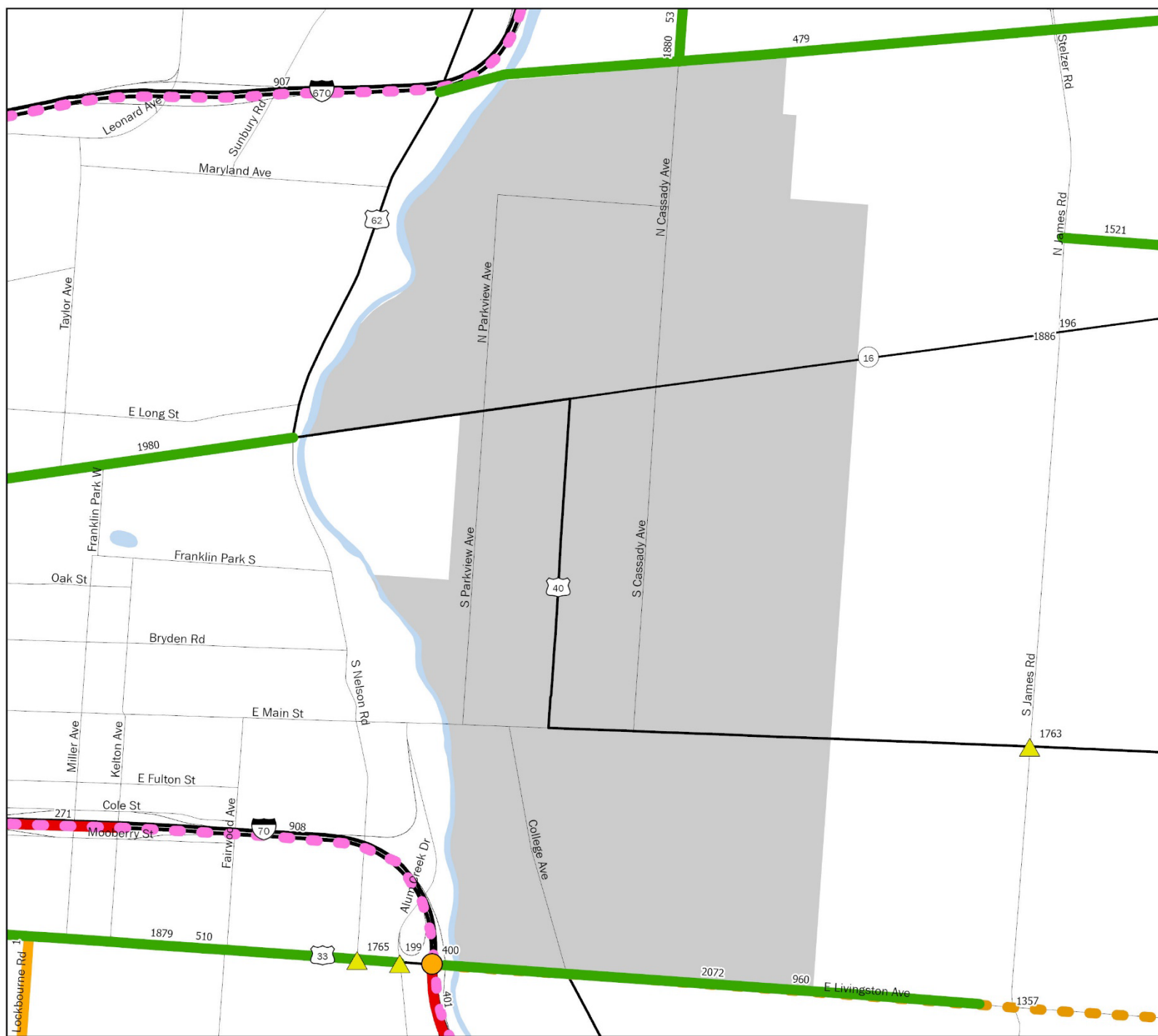


DRAFT TRANSIT PROJECTS

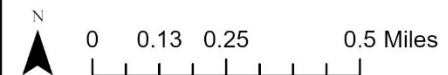
- Planned BRT Corridors
- Premium Transit Improvements
- Future Rapid Transit Corridors
- Corridors to Study



MTP 2024-2050 Draft Projects: Bexley Area



- Interchange Modification
- Intersection Modification
- New Bridge
- New Interchange
- New Roadway
- Convert to Freeway
- Major Widening
- Minor Widening/Safety
- Bike/Pedestrian
- Operations
- Lane Management
- New Bridge
- Rivers
- BEXLEY





2022

- Review, update, adopt Goals, Objectives, Performance Measures
- Develop and adopt 2050 population and employment growth projections

2023

- Compile candidate strategies and projects
- Project Evaluation Criteria
- Interactive webmap
- Strategy and project evaluation
- Fiscal Analysis
- Draft strategies and projects

2024

- Impact Analyses
- Full draft document
- Public comment period
- May: MTP Adoption

Public Participation



SAFER AND EXPANDED BIKE AND PEDESTRIAN PATHS

**WALKABLE
COMMUNITIES MORE
AFFORDABLE ACCESS
TO WORK, HOME, AND
ENTERTAINMENT**





MID-OHIO REGIONAL
MORPC
PLANNING COMMISSION

WHAT'S NEXT?

- Community Presentations – January - March
 - 54 Presentations Scheduled
- Public comment period open through March
- MORPC MTP Open House: **March 19th 3:30-6:30PM**
- Feedback incorporated into final document
- MTP Adoption May 2024



Maria Schaper, AICP

Associate Director, Transportation Planning

T: 614.233.4153

mschaper@morpc.org

Nick Gill

Transportation Director

T: 614.233.4151

ngill@morpc.org

Jonathan Heider, AICP

Senior Planner

T: 614.233.4154

jheider@morpc.org

Lauren Cardoni

Active Transportation and Safety Program Manager

T: 614.233.4128

lcardoni@morpc.org



MID-OHIO REGIONAL
MORPC
PLANNING COMMISSION

111 Liberty Street, Suite 100
Columbus, OH 43215

