









SCHNEIDER
PARK

MAIN ST
TRAILHEAD







DGB KINDNESS PARK

The DGB Kindness Park is dedicated in memory of Denise G. Blank, whose kindness and enthusiasm for Bexley and the Bexley community were contagious. Please take a moment to reflect, share kind thoughts on the chalk board, and pick up or leave a kindness rock in the spirit of Denise.

Dedicated September 29, 2022

Funded in part through the generous support of the Denise and Barry Blank Tree Fund of the Bexley Community Foundation.



BEXLEY
community foundation

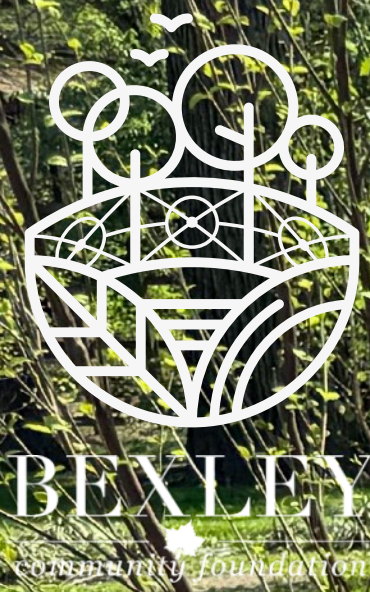






BEXLEY
community foundations





This path was made possible by the gift of the Bexley Community Foundation

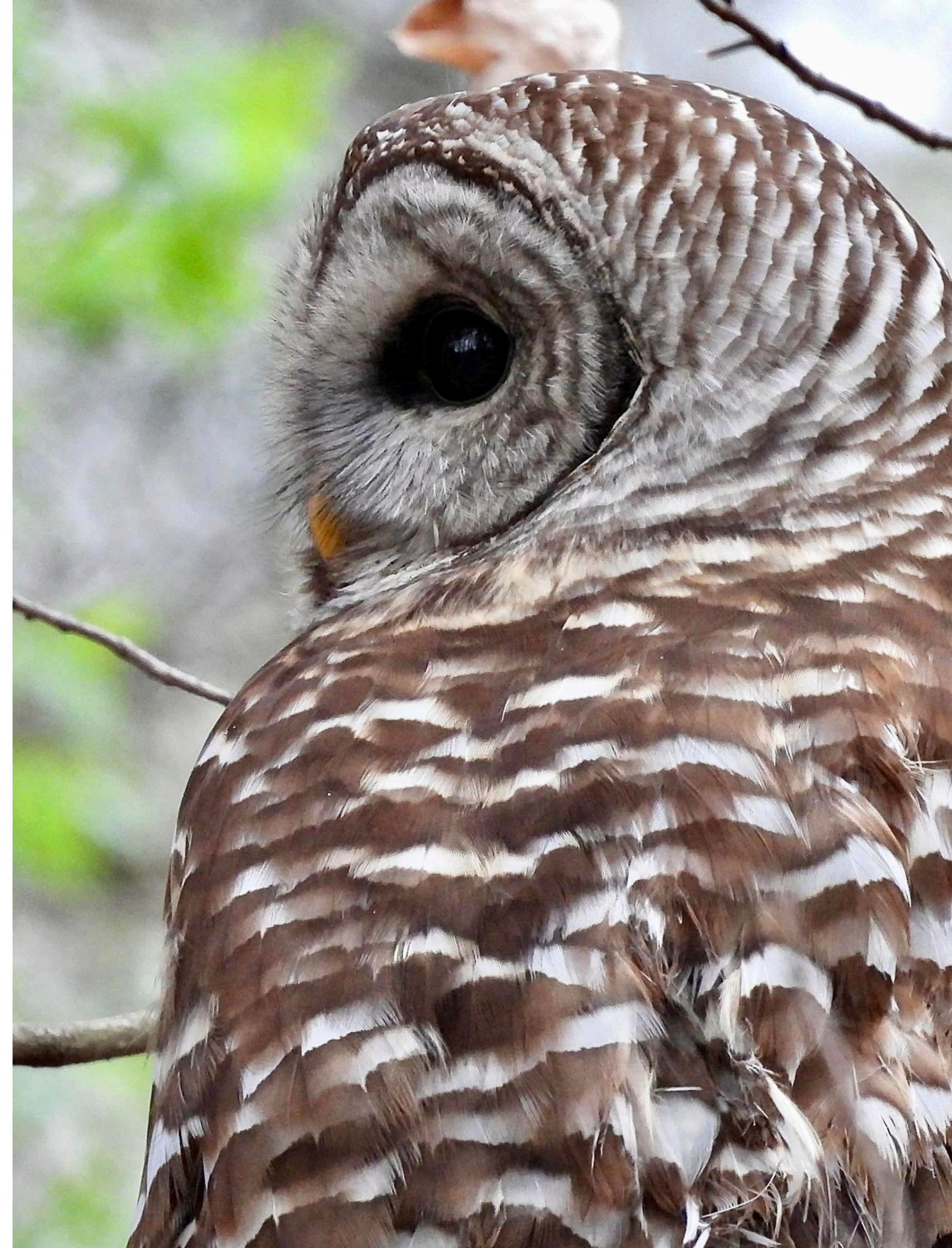
Birches

by Robert Frost





BEXLEY
community foundation





BEXLEY
community foundation







BEXLEY
community foundation

COMMONWEALTH PARK N

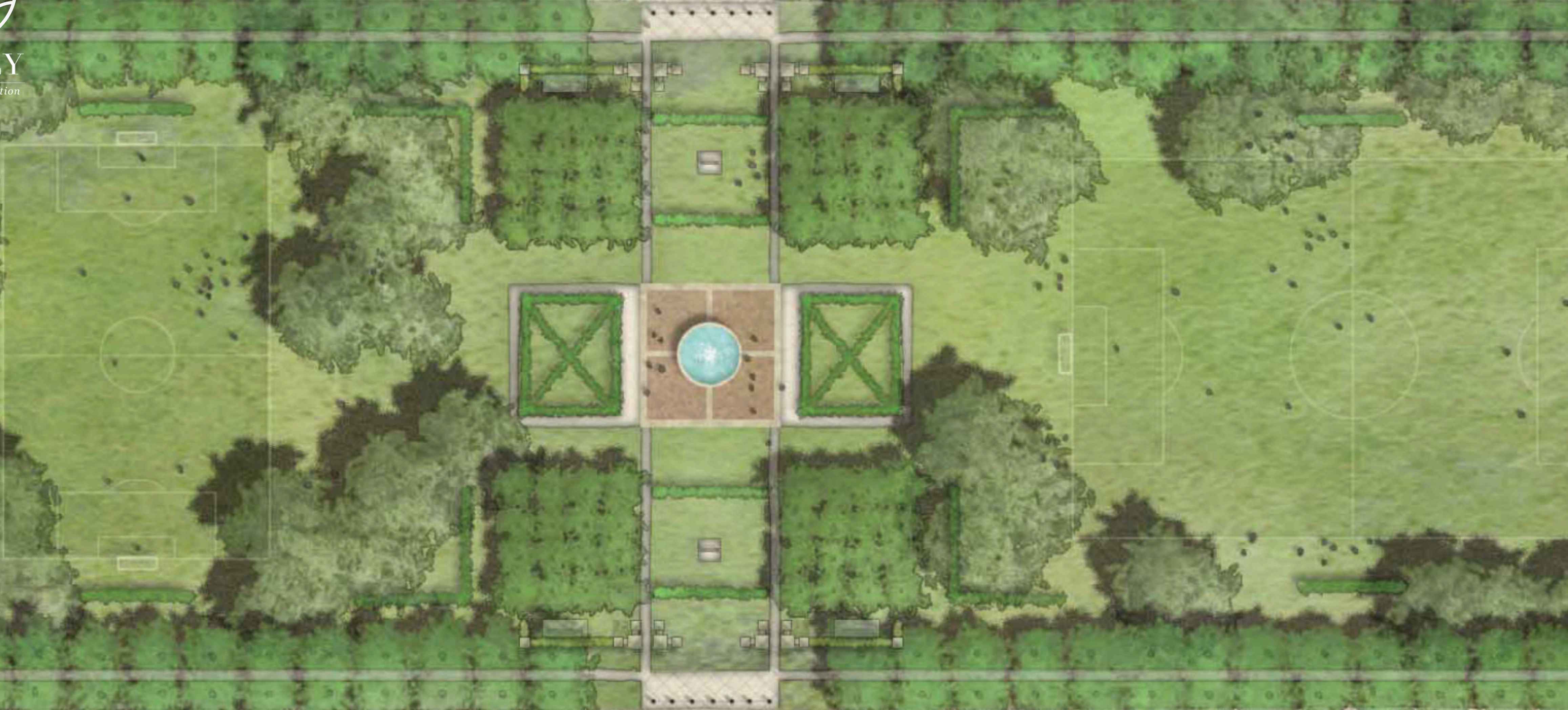
COMMONWEALTH PARK S





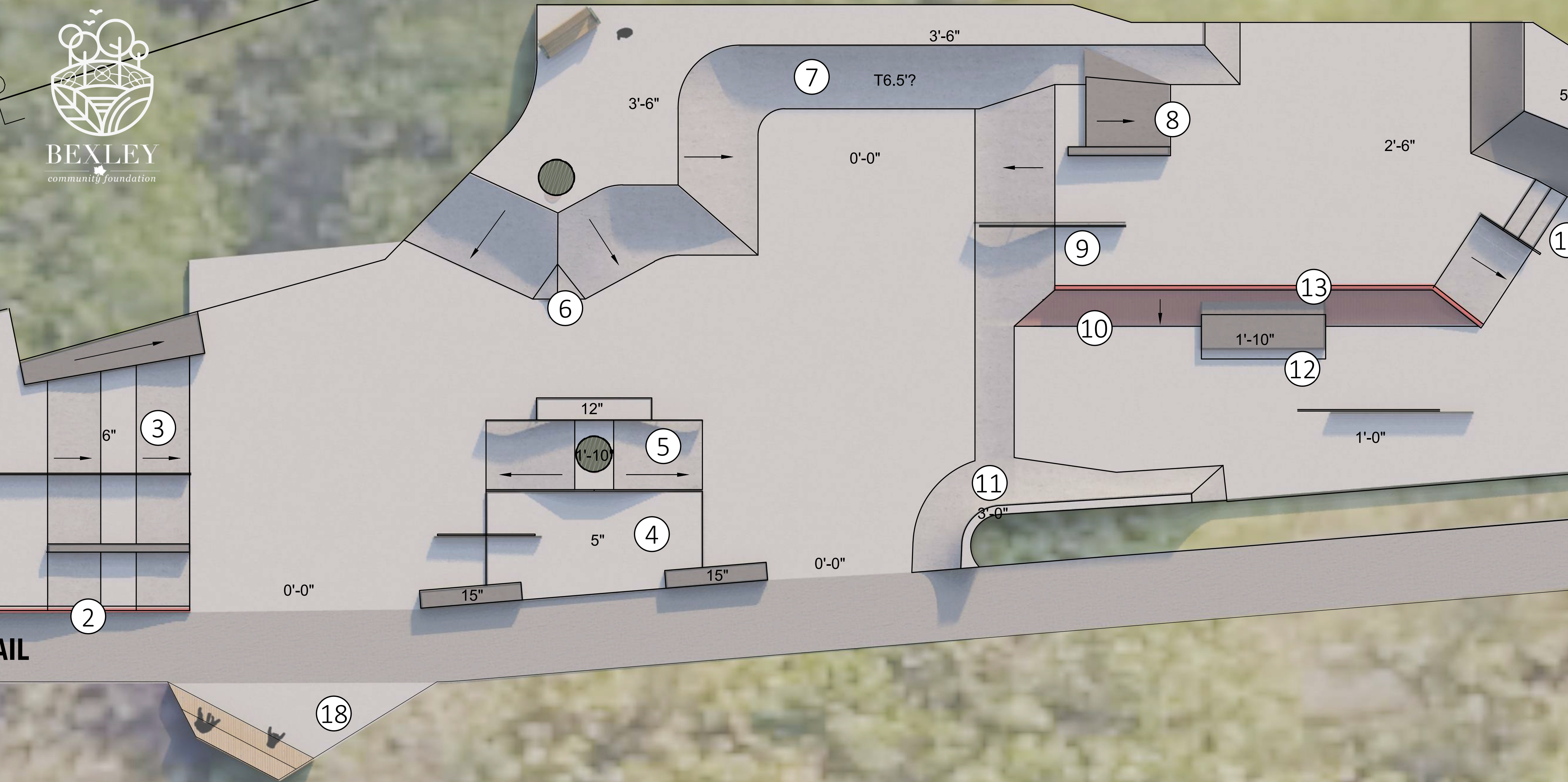
BEXLEY
community foundation

COMMONWEALTH PARK N



COMMONWEALTH PARK S







BEXLEY
community foundation





BEXLEY
community foundation





BEXLEY
community foundation





The purpose of this sign is to identify trailheads and become a totem for orientation of the park area. For example, in Phase 1, it has been programmed at either end of the Schneider Park Trail. This is a double-sided sign, mounted on a post. One side will typically identify the trail, present an area map, and post park rules. The other side used to identify the arrived destination (For example, a parking lot or street.)

Map, park rules and announcements will be changeable. The top band identifies the park area, and the bottom of the frame allows for an optional panel to recognize a patron or partner or post a seasonal event. Signs in Jeffrey Park will also get a No Dogs flag sign the post. This element should always be priced as an **Alternate**.



Bexley Parks Signage

Guidelines Manual

By the Numbers



146 TREES
PLANTED
AROUND BEXLEY



0.7 ACRES
OF HARDSCAPE
CONVERTED TO GRASS



**2 TRAVELLING
TABLES**
UPPING THE
COMPETITION



**1,000'S OF
KID HOURS**
COOLING OFF AT
THE SPLASH PAD



1.9 ACRES
OF ATHLETIC
FIELDS RENOVATED



COUNTLESS DOGS
LIVING THEIR BEST
LIFE AT WOOF PARK

