

Replacing trim on front facade





EAST SIDE BUTCHERY

© 2024 600m



bent metal panel,  
typical for several  
locations





panel lifting up in  
several places.

Dent in panel





Roof sloping up -  
looks crooked.





2474 EAST MAIN STREET  
BEXLEY, OH. 43209

JOB TYPE - EC-100 PANELS

KRSM JOB #: V2-3182

DRAWING SHEET LIST

R1	CANOPY PLAN AND ELEVATIONS
D1	CANOPY DETAILS

PROJECT TEAM

PROJECT MANAGER	SS
ESTIMATOR	JL
ENGINEERING MGR	DR
DRAWN BY	DS

ISSUED FOR

APPROVAL	03/18/2025
----------	------------

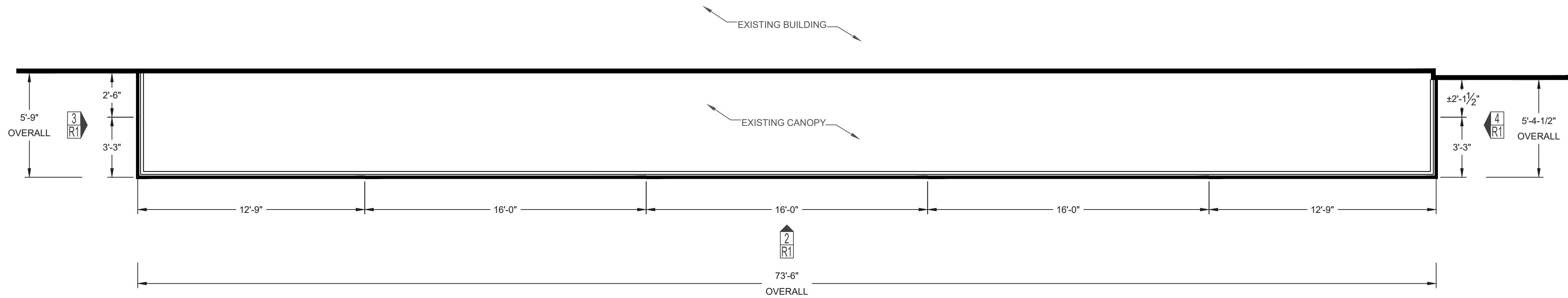
DRAWING REVISIONS

1		
2		
3		

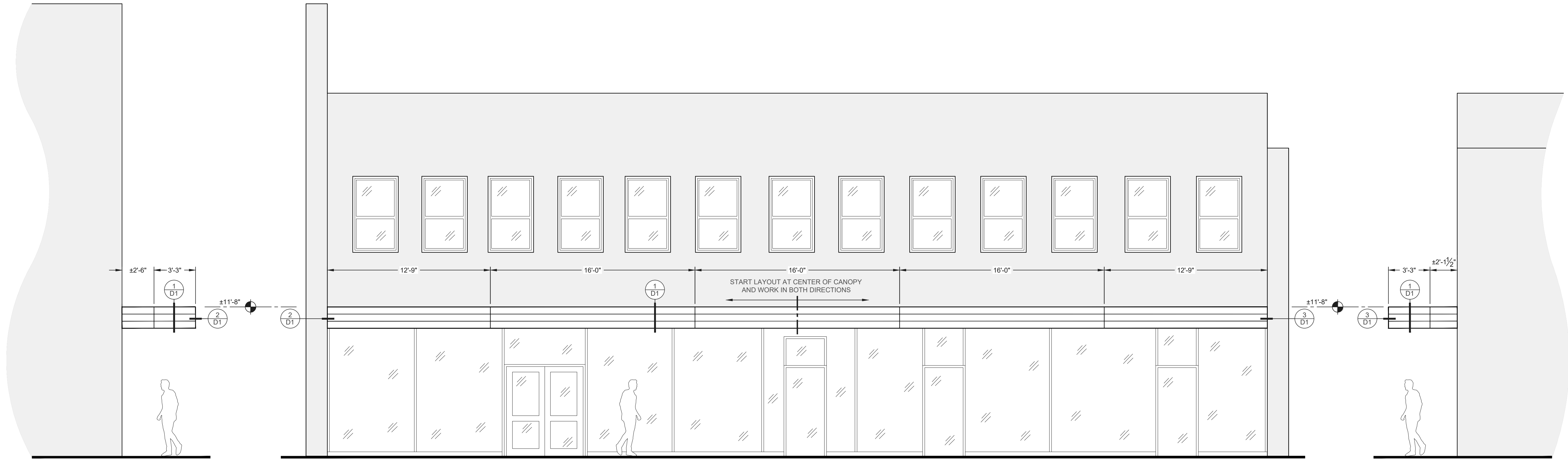
SCALE: AS NOTED

R1

CANOPY PLAN  
AND ELEVATIONS



1 CANOPY PLAN  
R1 SCALE: 1/4"=1'-0"

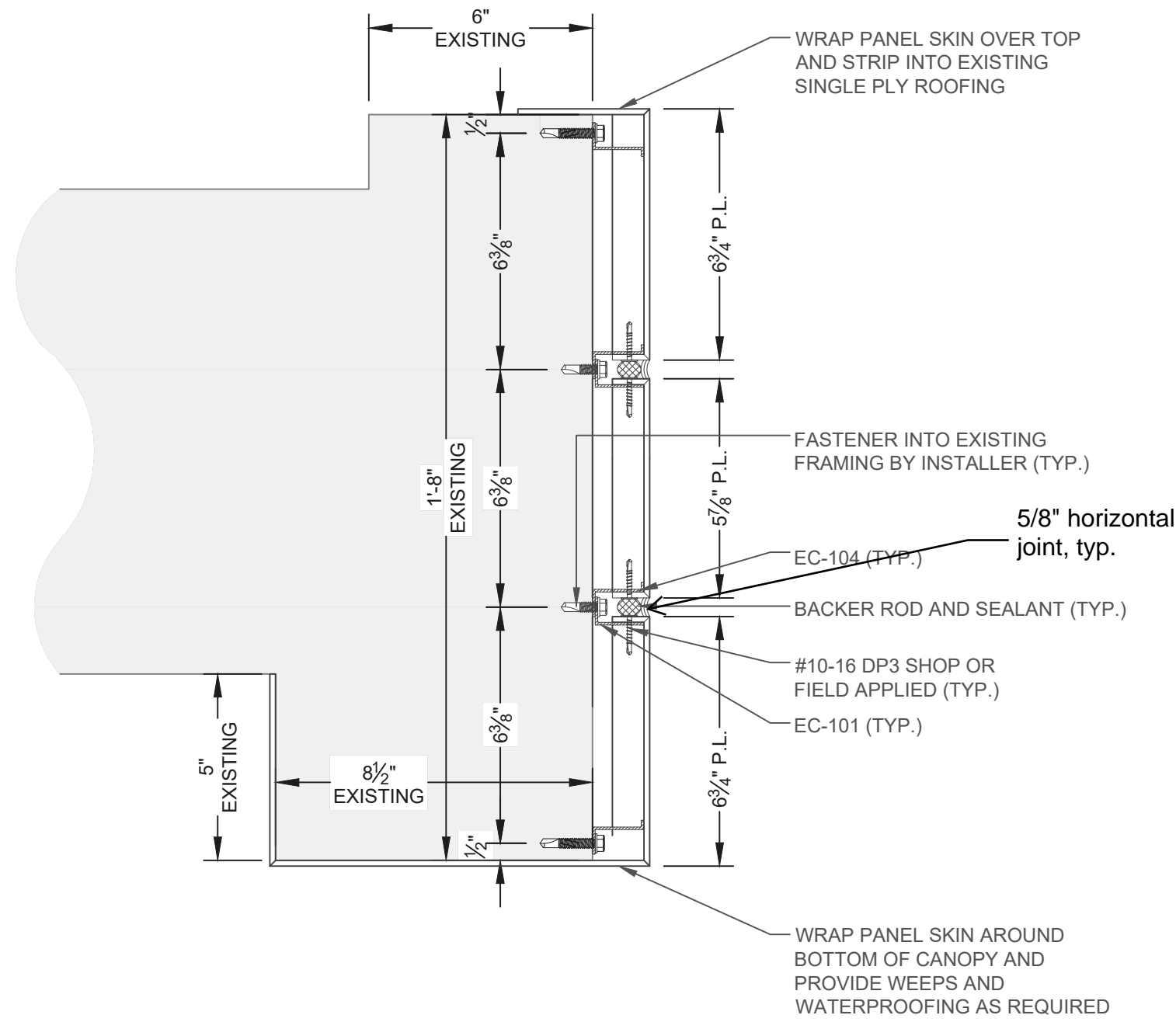


2 FRONT ELEVATION  
R1 SCALE: 1/4"=1'-0"

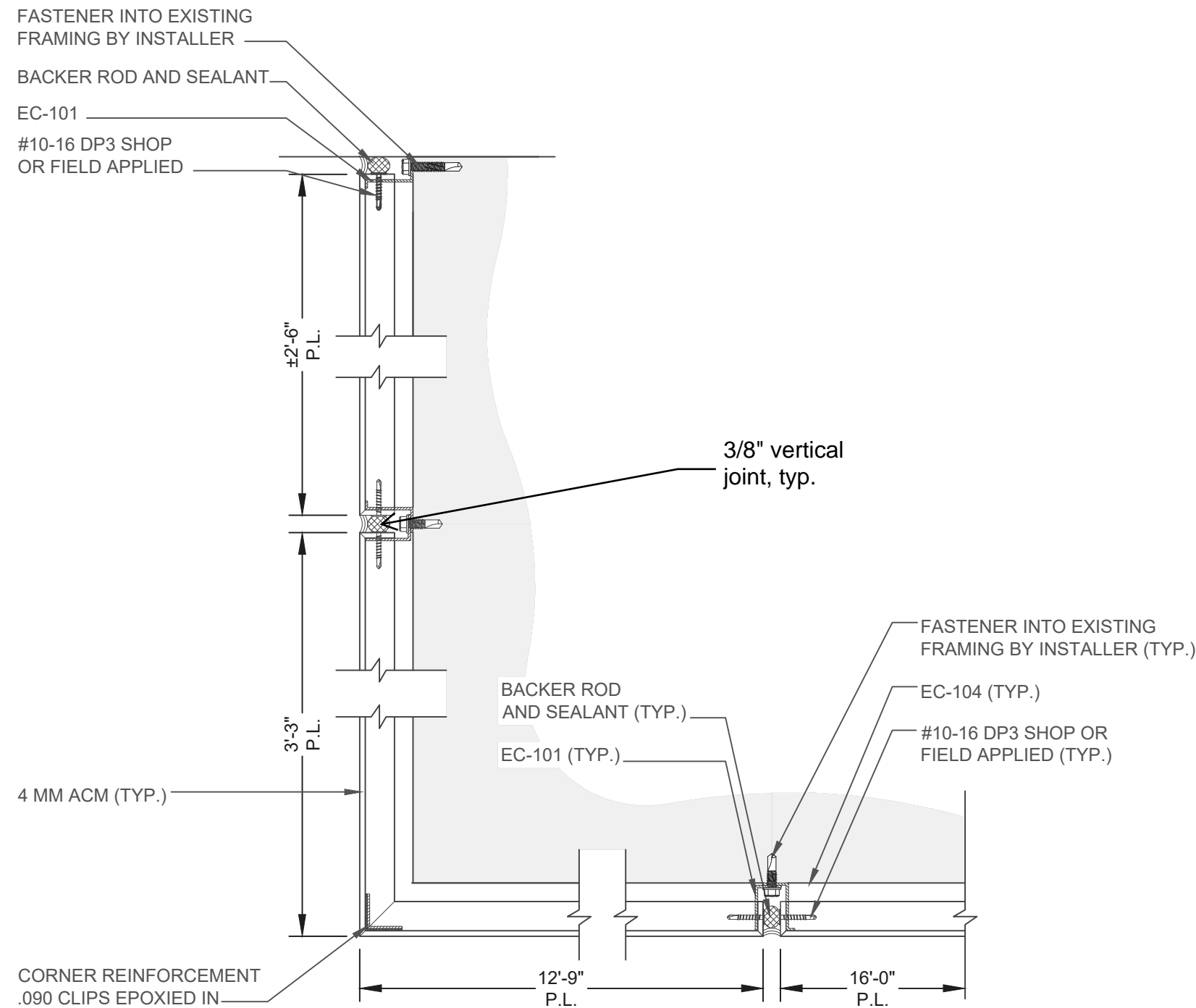
3 LEFT SIDE ELEVATION  
R1 SCALE: 1/4"=1'-0"

4 RIGHT SIDE ELEVATION  
R1 SCALE: 1/4"=1'-0"

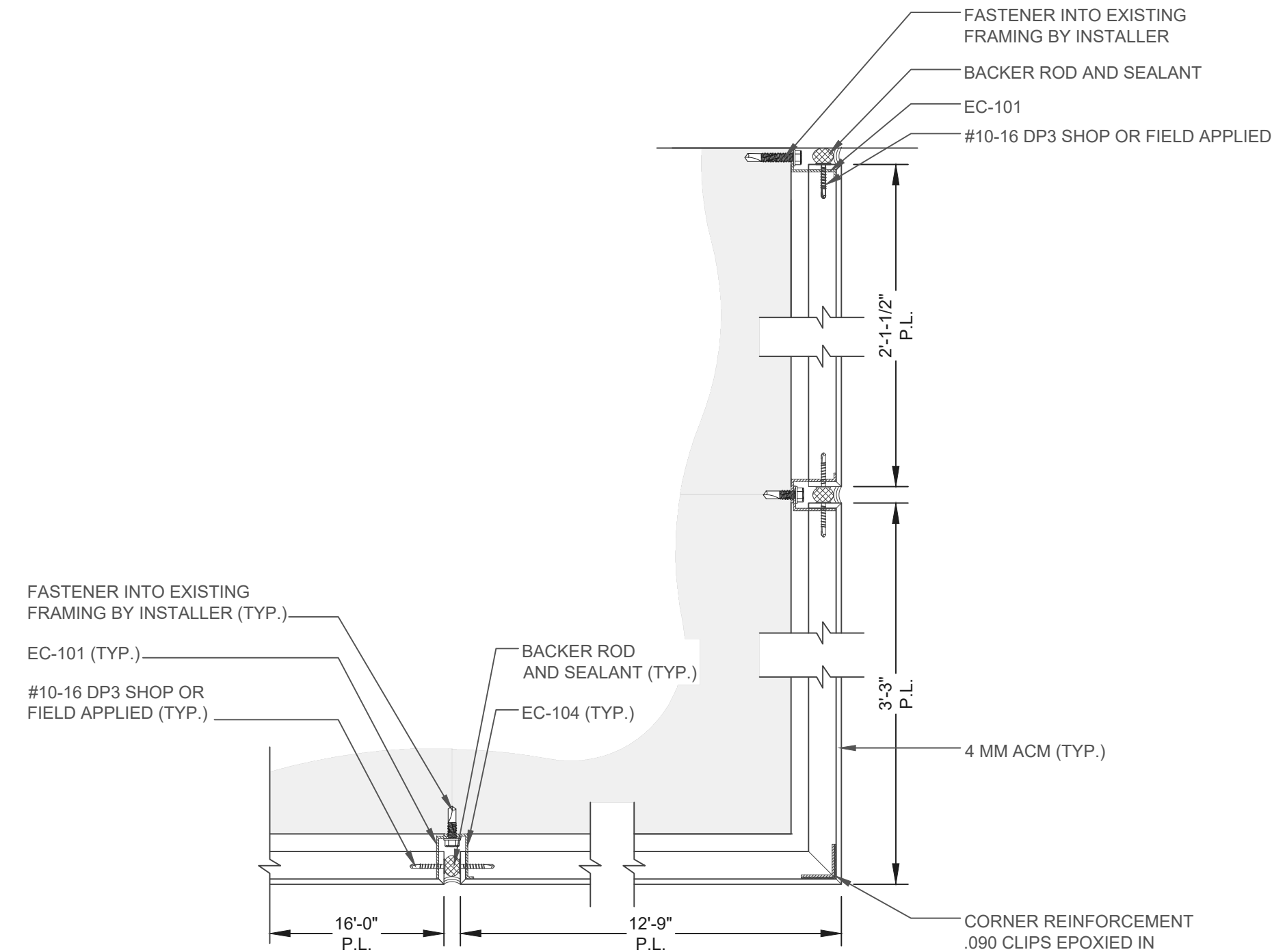




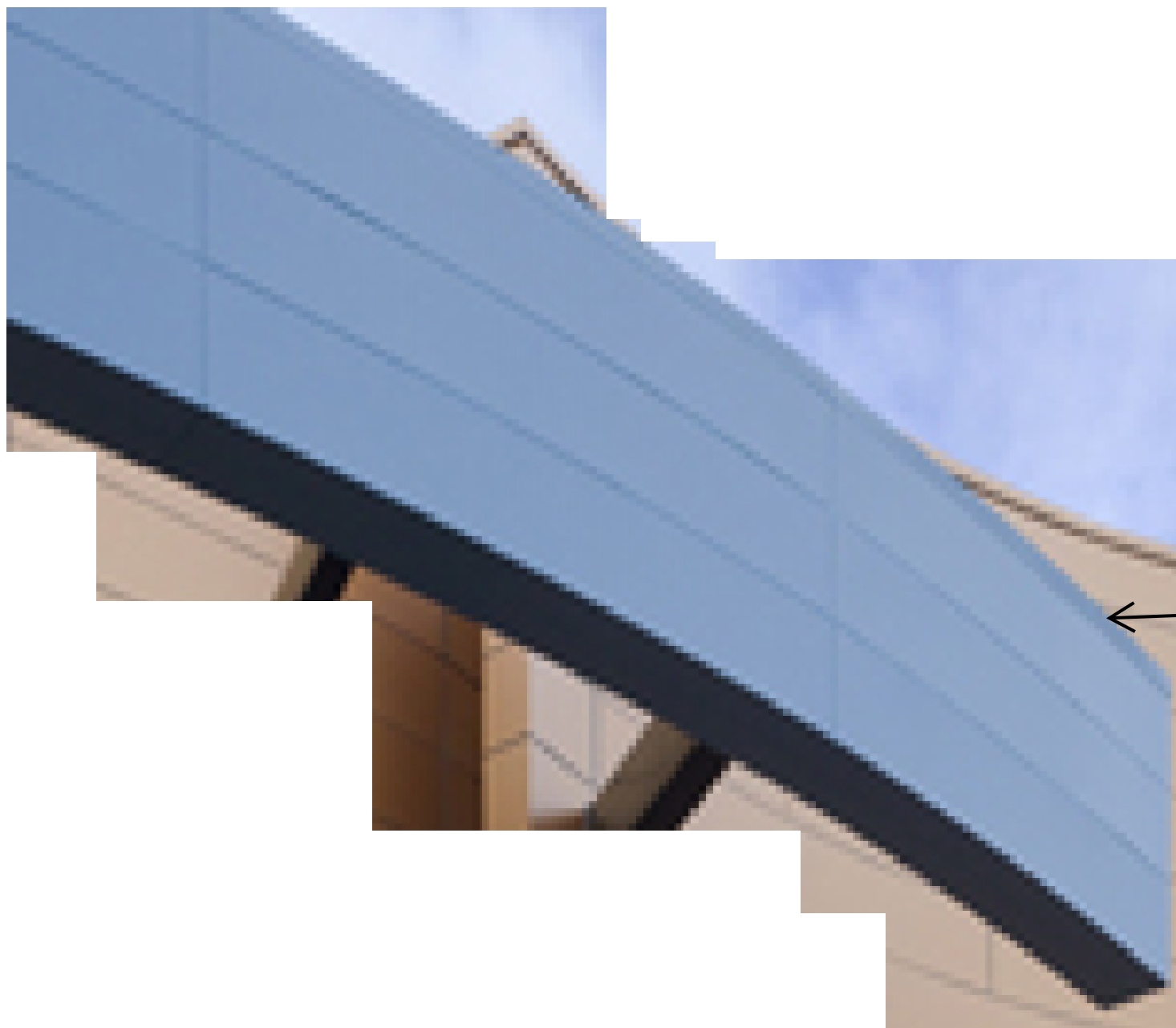
1  
D1 VERTICAL CROSS SECTION



2  
D1 RIGHT SIDE OUTSIDE CORNER DETAIL



3  
D1 LEFT SIDE OUTSIDE CORNER DETAIL



CHARCOAL  
COLOR TO  
MATCH  
EXISTING

2474 EAST MAIN STREET  
BEXLEY, OH. 43209

JOB TYPE - EC-100 PANELS

KRSM JOB #: V2-3182

DRAWING SHEET LIST

R1	CANOPY PLAN AND ELEVATIONS
D1	CANOPY DETAILS

PROJECT TEAM

PROJECT MANAGER	SS
ESTIMATOR	JL
ENGINEERING MGR	DR
DRAWN BY	DS

ISSUED FOR

APPROVAL	03/18/2025
----------	------------

DRAWING REVISIONS

1		
2		
3		

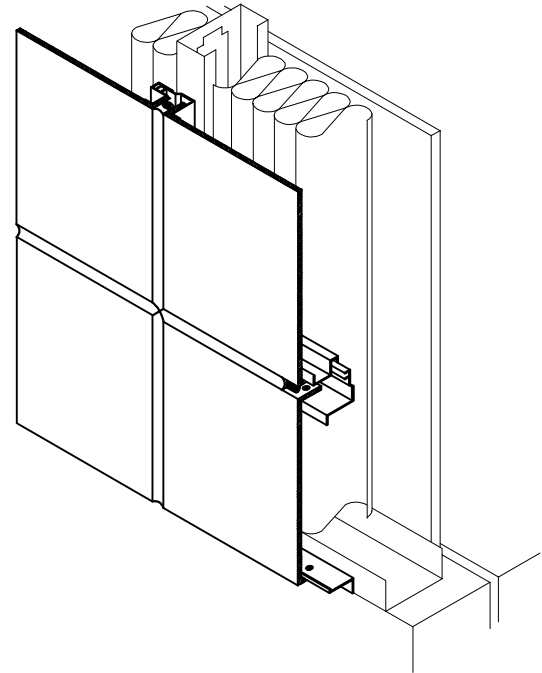
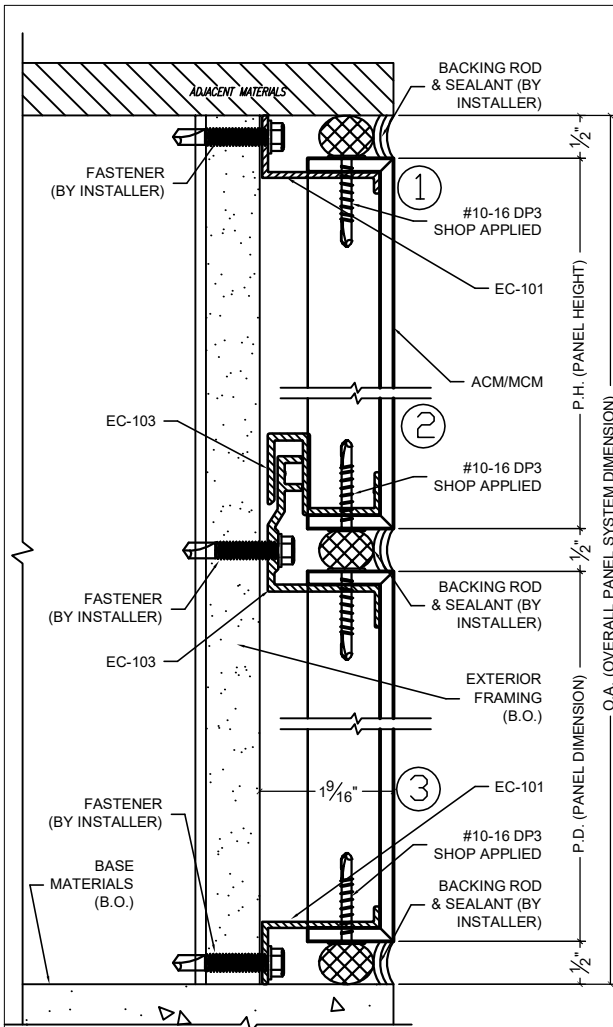
SCALE: 3"=1'-0"

D1

CANOPY DETAILS

# EC-100

## ROUTE & RETURN WET JOINT SYSTEM



- ① TYPICAL HEAD JOINT
- ② TYPICAL HORIZONTAL/VERTICAL JOINT
- ③ TYPICAL BASE JOINT

EC-100 PANEL SYSTEM - ISOMETRIC

## EC-100 Wet Joint System

The EC-100 Aluminum Composite Panel Barrier System utilizes panel length, male/female extrusions, that are interlocking and easily installed. The EC-100 is a wet-joint system and is sealed with a silicone sealant. The EC-100 is routed and fabricated into "formed pans" that are attached to the EC-100 extrusions. The EC-100 system can be used on projects varying from the most simple to the most complex. The EC-100's versatility allows installation over any structurally sound surface.

The EC-100 System is compatible with 4mm, 6mm, & 8mm MCM Panels.

# EC-100

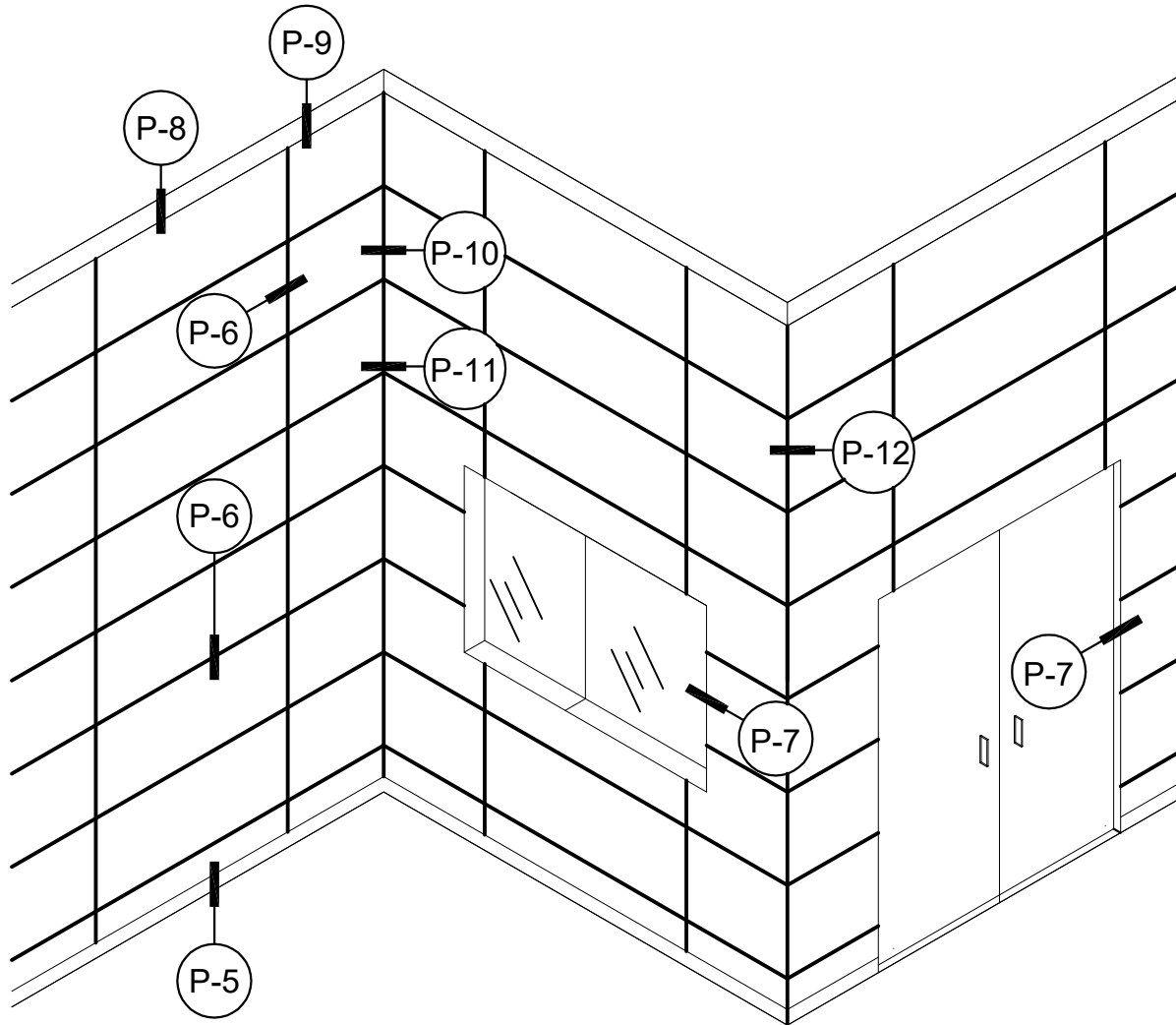
ROUTE & RETURN CAULKED SYSTEM



East Coast Metal Systems, Inc  
625 Distribution Road  
Triadelphia, WV 26059  
www.ecmsinc.net

P: (304) 909-4220 F: (304) 909 4242

## EC-100 METAL COMPOSITE PANEL SYSTEM



### ABBREVIATIONS

ACM/MCM = METAL COMPOSITE MATERIAL

B.O. = BY OTHERS

O.A. = OVERALL PANEL

SYSTEM DIMENSION

P.D. = PANEL DIMENSION

P.H. = PANEL HEIGHT

P.W. = PANEL WIDTH

### INDEX

(P-2) - (P-3): SYSTEM OVERVIEW

(P4): EXTRUSIONS

(P-5) - (P-13): SYSTEM DETAILS



# EC-100

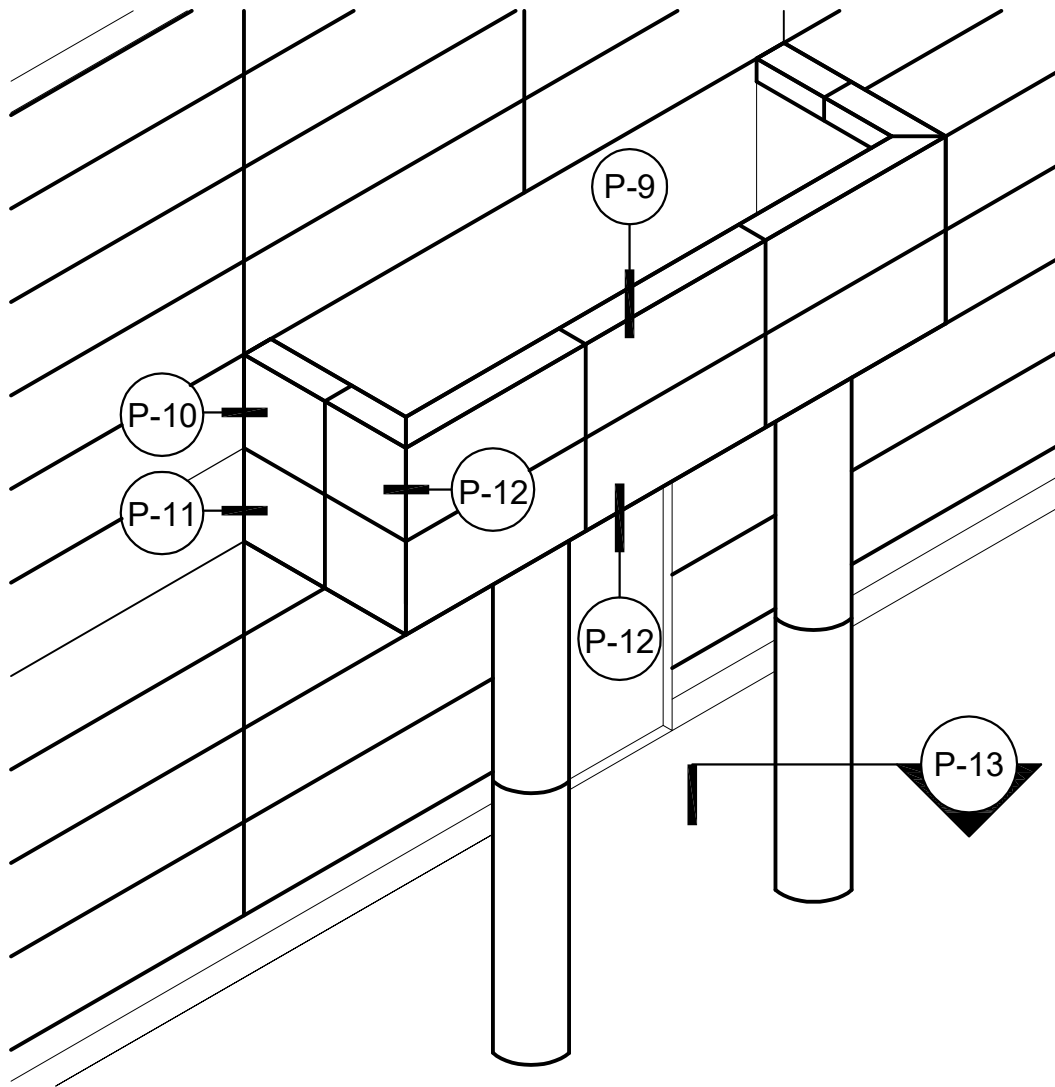
ROUTE & RETURN CAULKED SYSTEM



East Coast Metal Systems, Inc  
625 Distribution Road  
Triadelphia, WV 26059  
[www.ecmsinc.net](http://www.ecmsinc.net)

P: (304) 909-4220 F: (304) 909 4242

## EC-100 METAL COMPOSITE PANEL SYSTEM CANOPY AND COLUMN WRAPS



**EC-100**

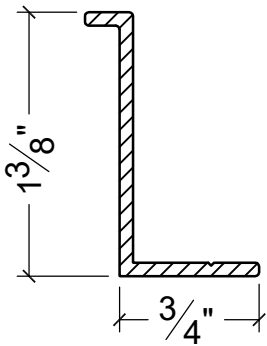
ROUTE & RETURN CAULKED SYSTEM

**EAST COAST**  
METAL SYSTEMS

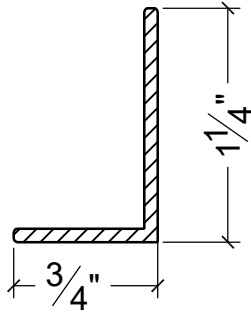
East Coast Metal Systems, Inc  
625 Distribution Road  
Triadelphia, WV 26059  
www.ecmsinc.net

P: (304) 909-4220 F: (304) 909 4242

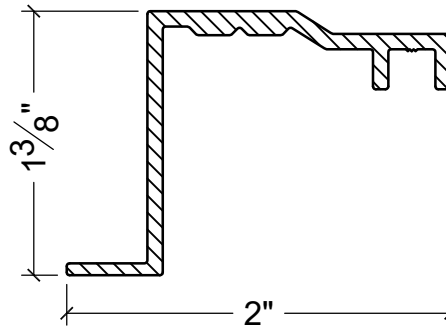
# ATTACHMENT EXTRUSIONS



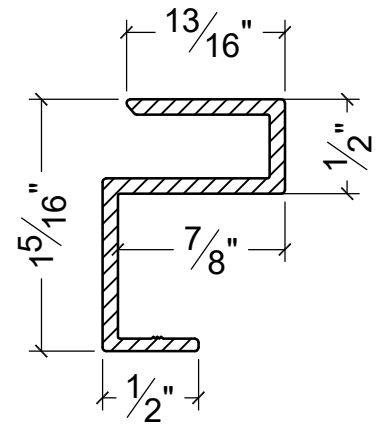
EC-101  
EDGE ANGLE



EC-104  
EDGE ANGLE



EC-102  
MALE CONNECTOR



EC-103  
FEMALE CONNECTOR

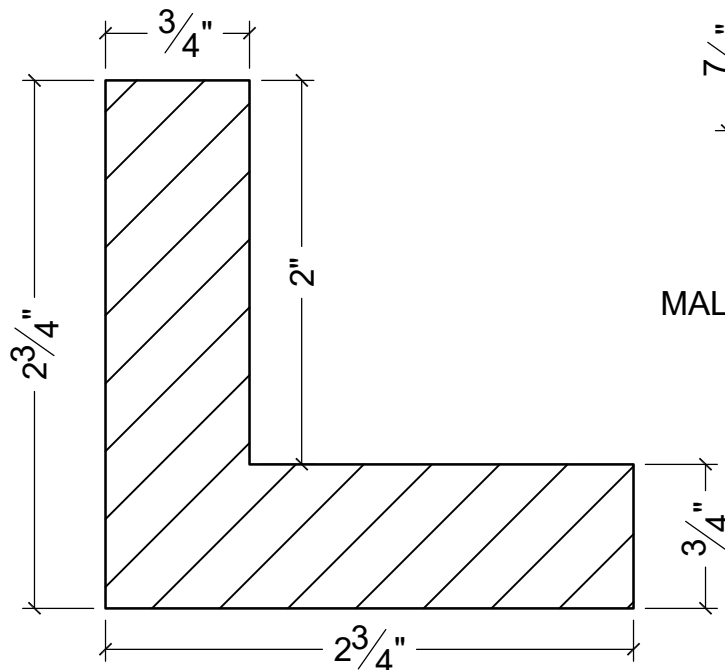
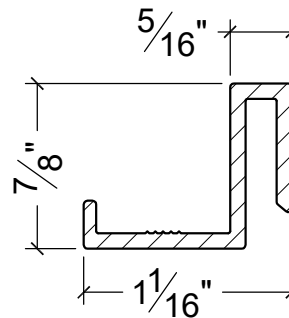
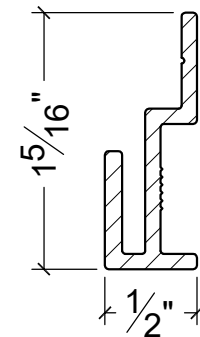


PLATE PANEL RETURN REINFORCEMENT



EC-105  
MALE CONNECTOR



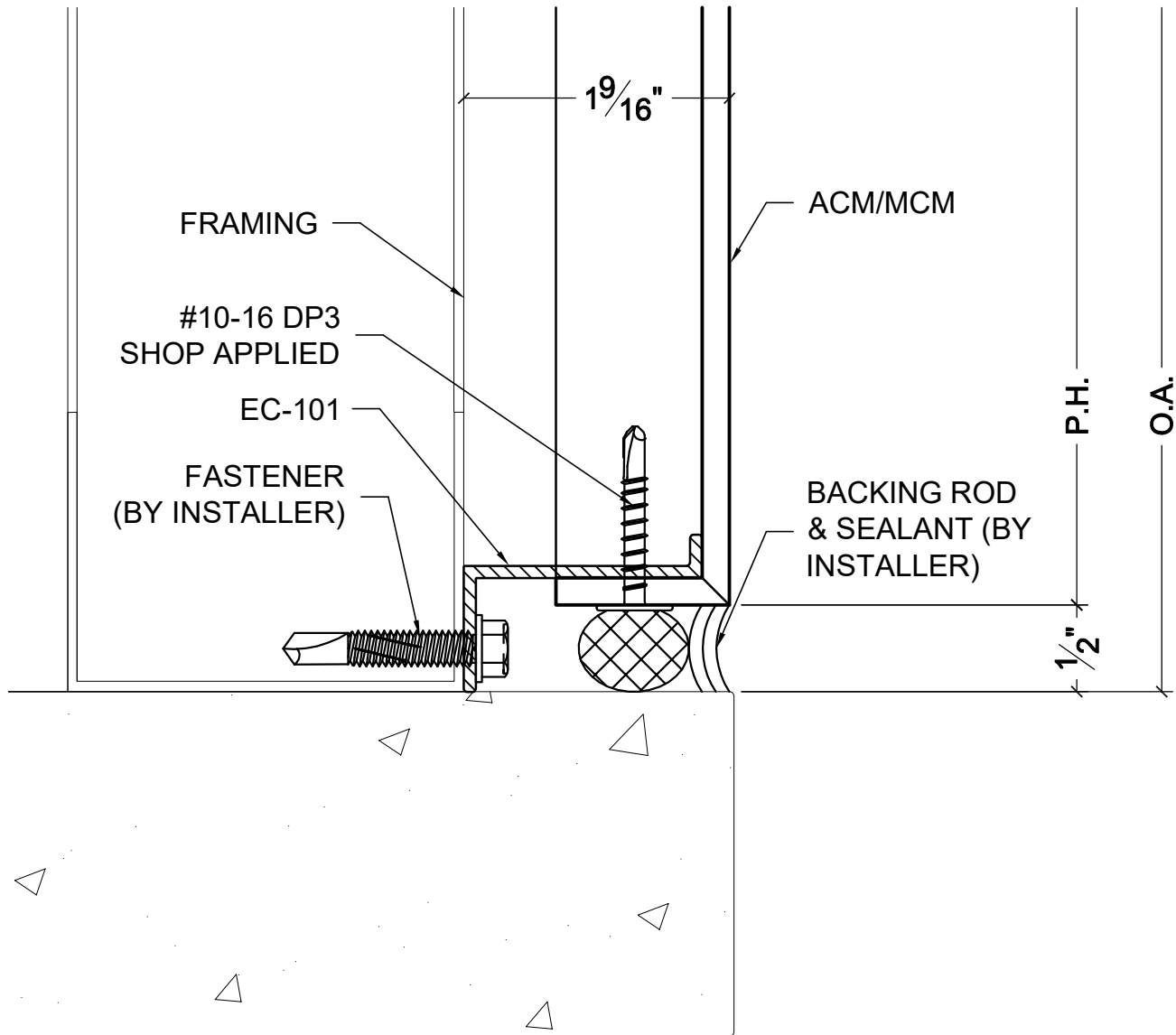
EC-106  
FEMALE CONNECTOR

# EC-100

ROUTE & RETURN CAULKED SYSTEM



East Coast Metal Systems, Inc  
625 Distribution Road  
Triadelphia, WV 26059  
[www.ecmsinc.net](http://www.ecmsinc.net)  
P: (304) 909-4220 F: (304) 909 4242



## SILL CONDITION

1:1



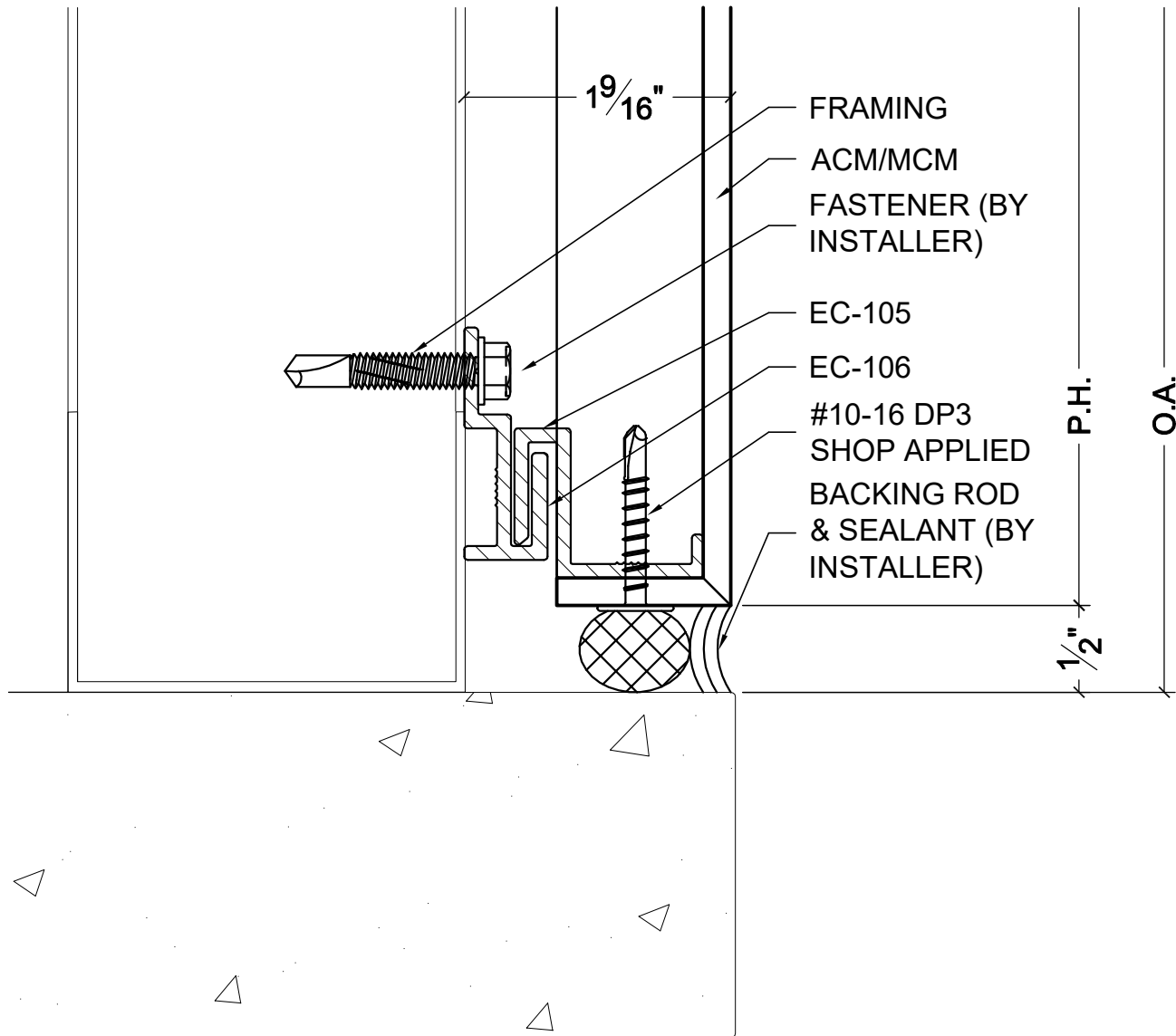
# EC-100

ROUTE & RETURN CAULKED SYSTEM



East Coast Metal Systems, Inc  
625 Distribution Road  
Triadelphia, WV 26059  
[www.ecmsinc.net](http://www.ecmsinc.net)

P: (304) 909-4220 F: (304) 909 4242



## SILL CONDITION

1:1

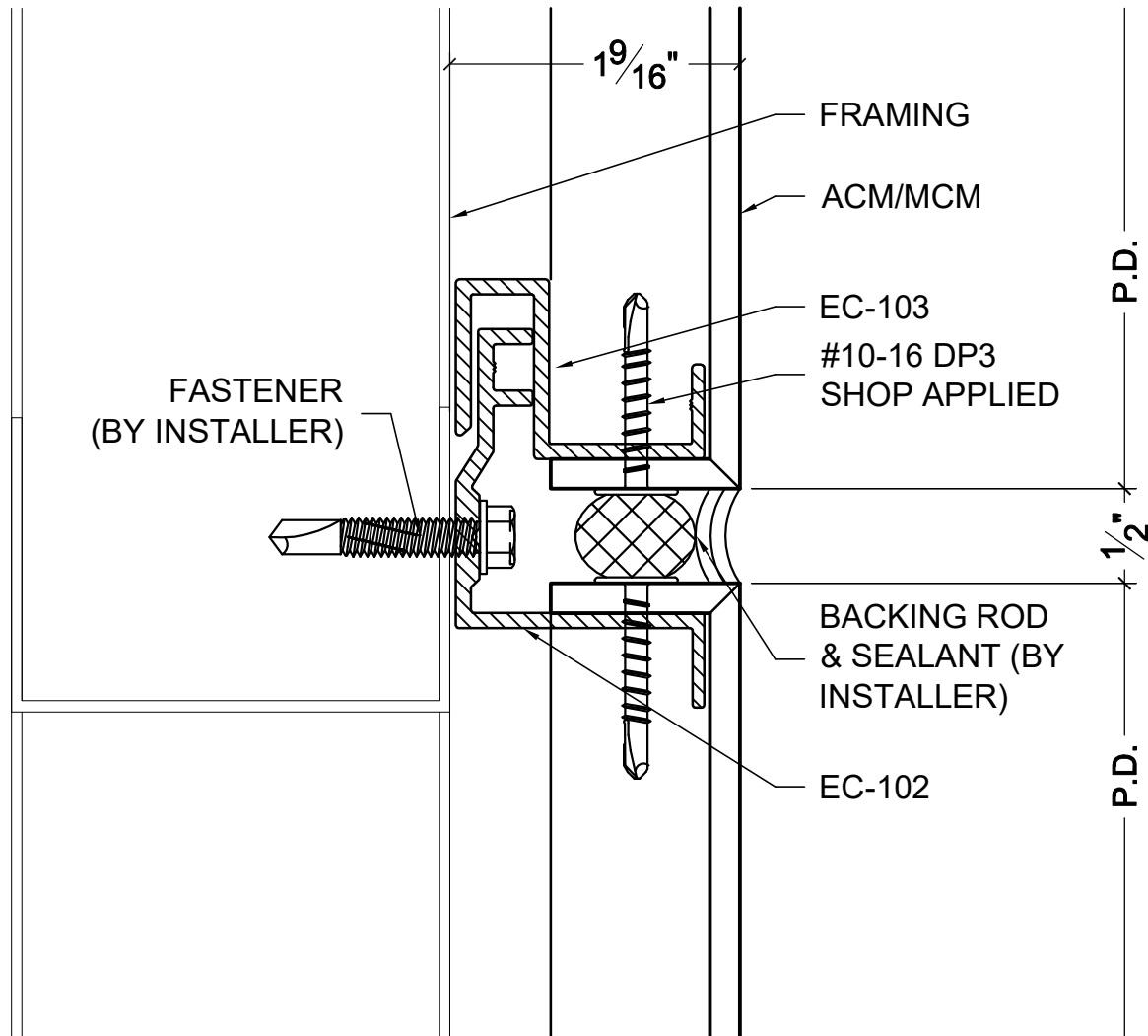
# EC-100

ROUTE & RETURN CAULKED SYSTEM



East Coast Metal Systems, Inc  
625 Distribution Road  
Triadelphia, WV 26059  
[www.ecmsinc.net](http://www.ecmsinc.net)

P: (304) 909-4220 F: (304) 909 4242



## HORIZONTAL/VERTICAL JOINT

1:1

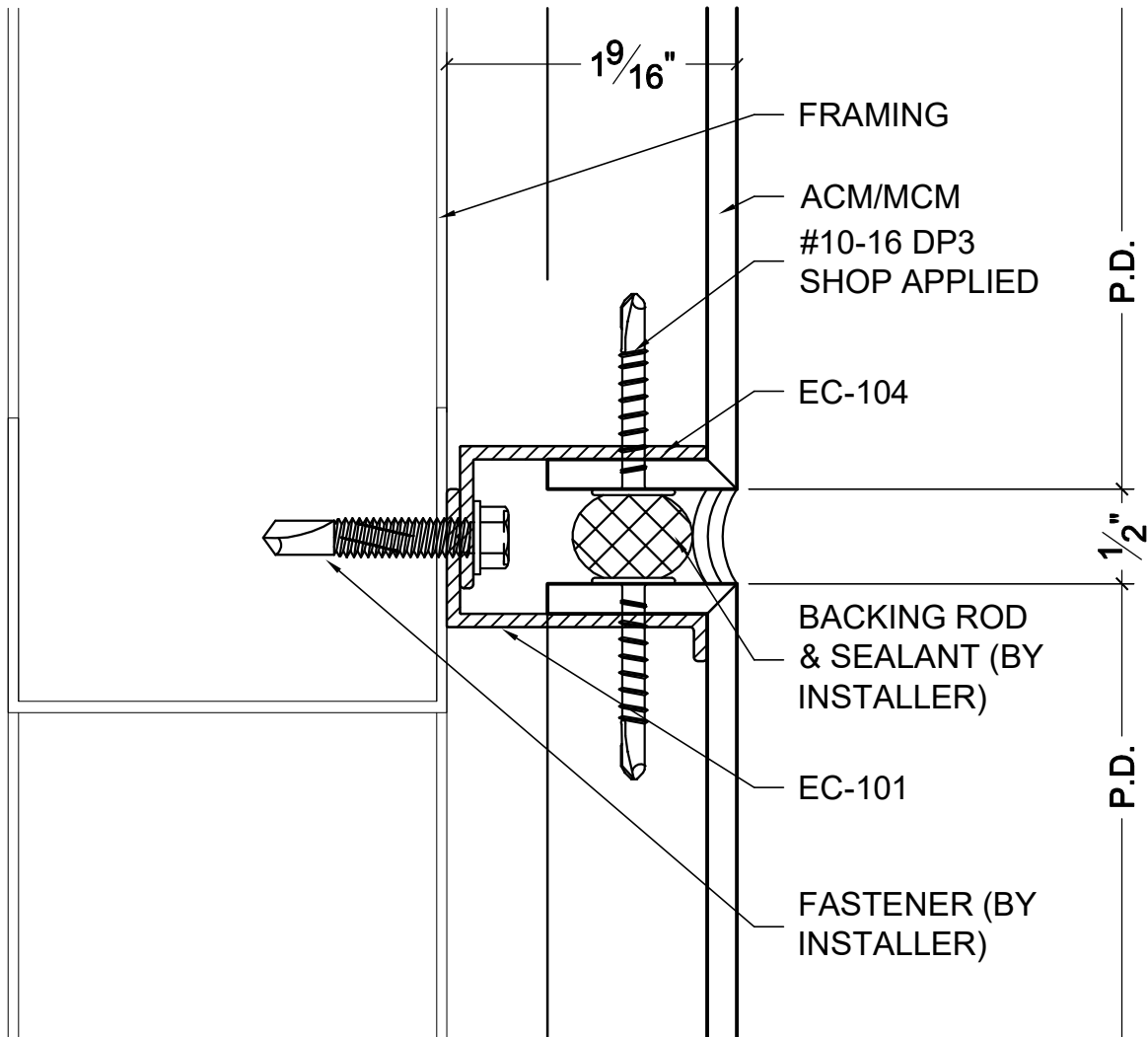
# EC-100

ROUTE & RETURN CAULKED SYSTEM



East Coast Metal Systems, Inc  
625 Distribution Road  
Triadelphia, WV 26059  
www.ecmsinc.net

P: (304) 909-4220 F: (304) 909 4242



## HORIZONTAL/VERTICAL JOINT

1:1

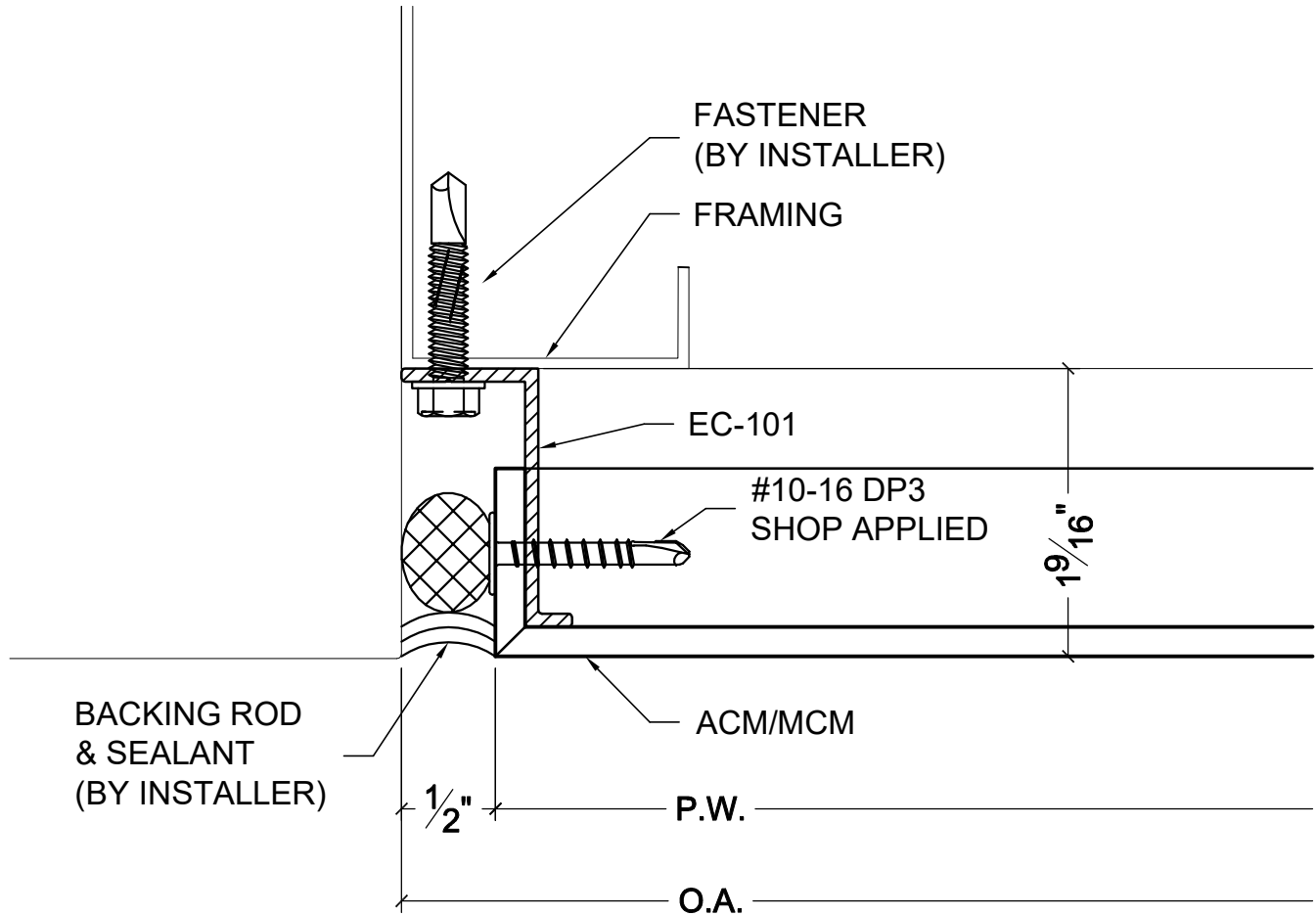


# EC-100

ROUTE & RETURN CAULKED SYSTEM



East Coast Metal Systems, Inc  
625 Distribution Road  
Triadelphia, WV 26059  
[www.ecmsinc.net](http://www.ecmsinc.net)  
P: (304) 909-4220 F: (304) 909 4242



## EDGE CONDITION

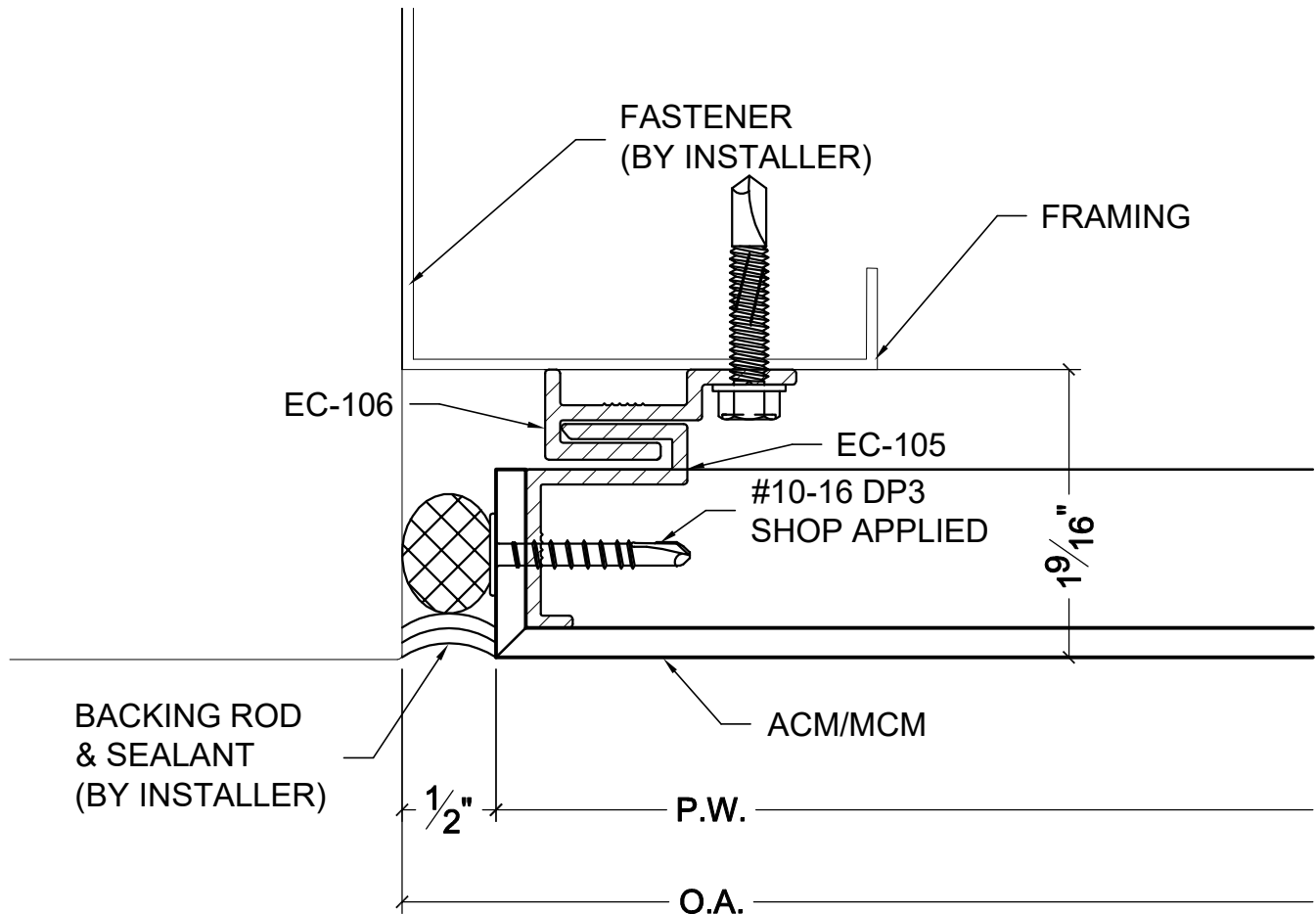
1:1

# EC-100

ROUTE & RETURN CAULKED SYSTEM

**EAST COAST**  
METAL SYSTEMS

East Coast Metal Systems, Inc  
625 Distribution Road  
Triadelphia, WV 26059  
www.ecmsinc.net  
P: (304) 909-4220 F: (304) 909 4242



## EDGE CONDITION

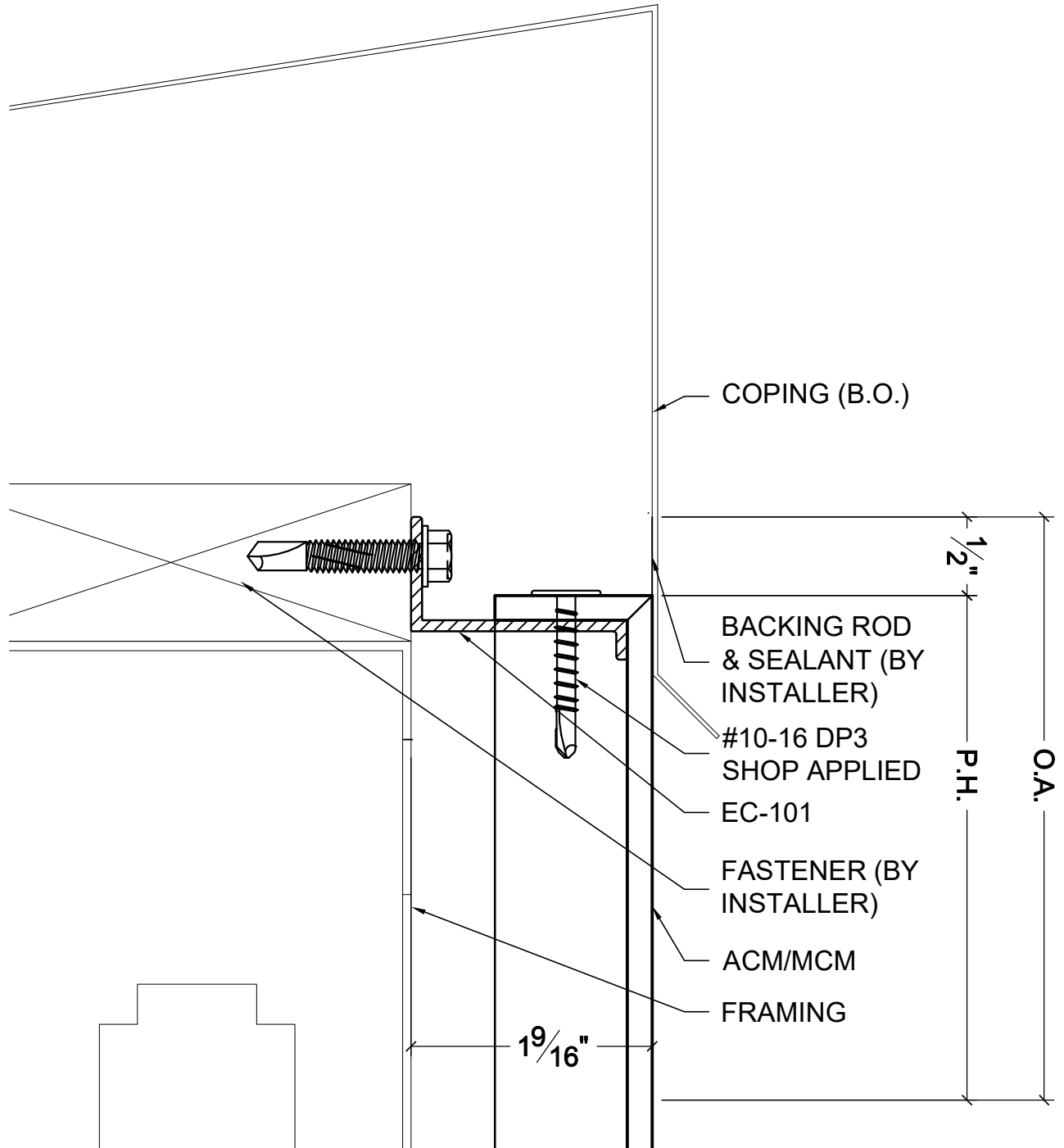
1:1

# EC-100

ROUTE & RETURN CAULKED SYSTEM

  
**EAST COAST**  
METAL SYSTEMS

East Coast Metal Systems, Inc  
625 Distribution Road  
Triadelphia, WV 26059  
[www.ecmsinc.net](http://www.ecmsinc.net)  
P: (304) 909-4220 F: (304) 909 4242



## PARAPET CONDITION WITH DISSIMILAR MATERIAL

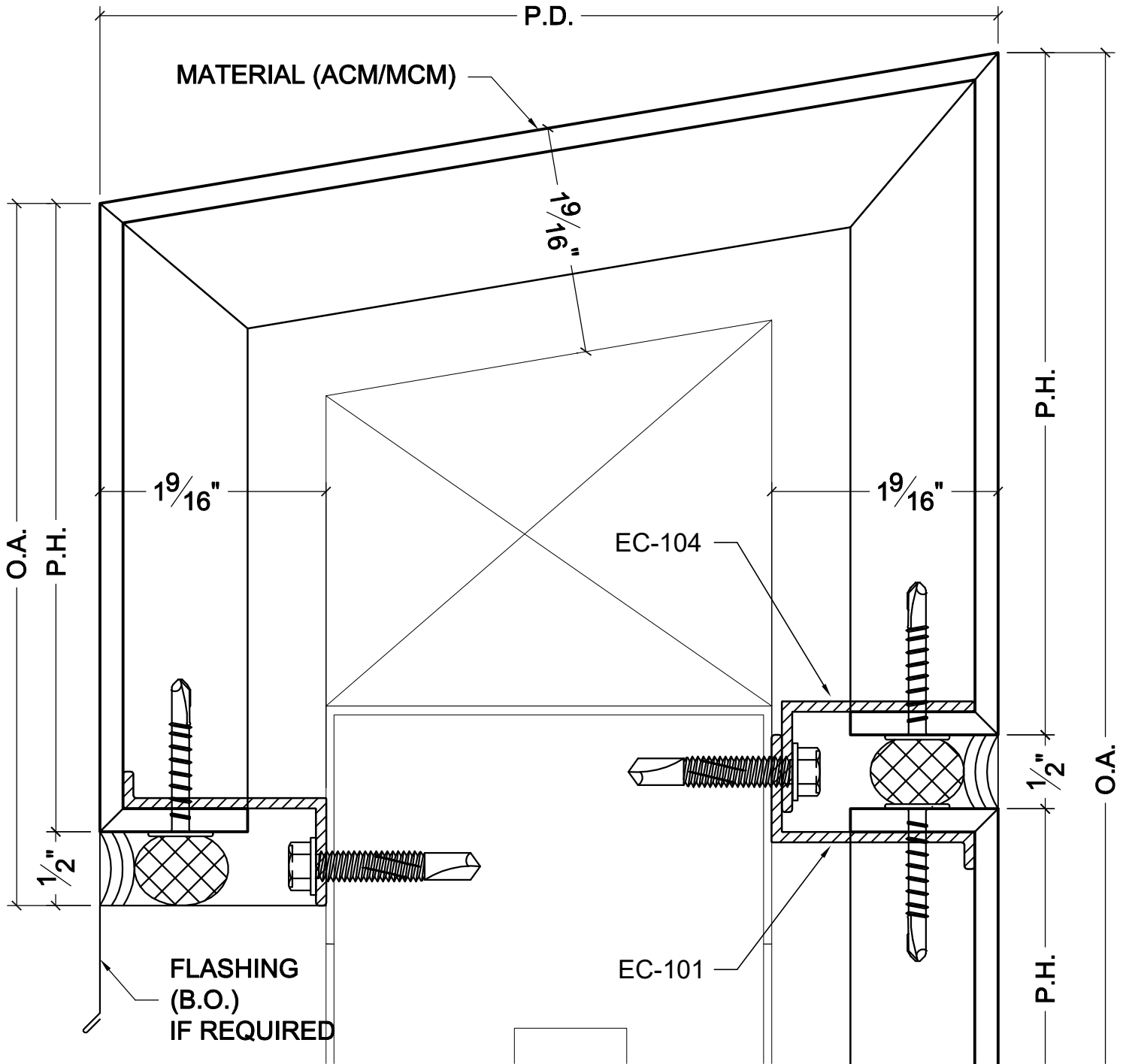
1:1

# EC-100

ROUTE & RETURN CAULKED SYSTEM



East Coast Metal Systems, Inc  
625 Distribution Road  
Triadelphia, WV 26059  
www.ecmsinc.net  
P: (304) 909-4220 F: (304) 909 4242



## PARAPET CONDITION WITH ACM COPING

1:1



# EC-100

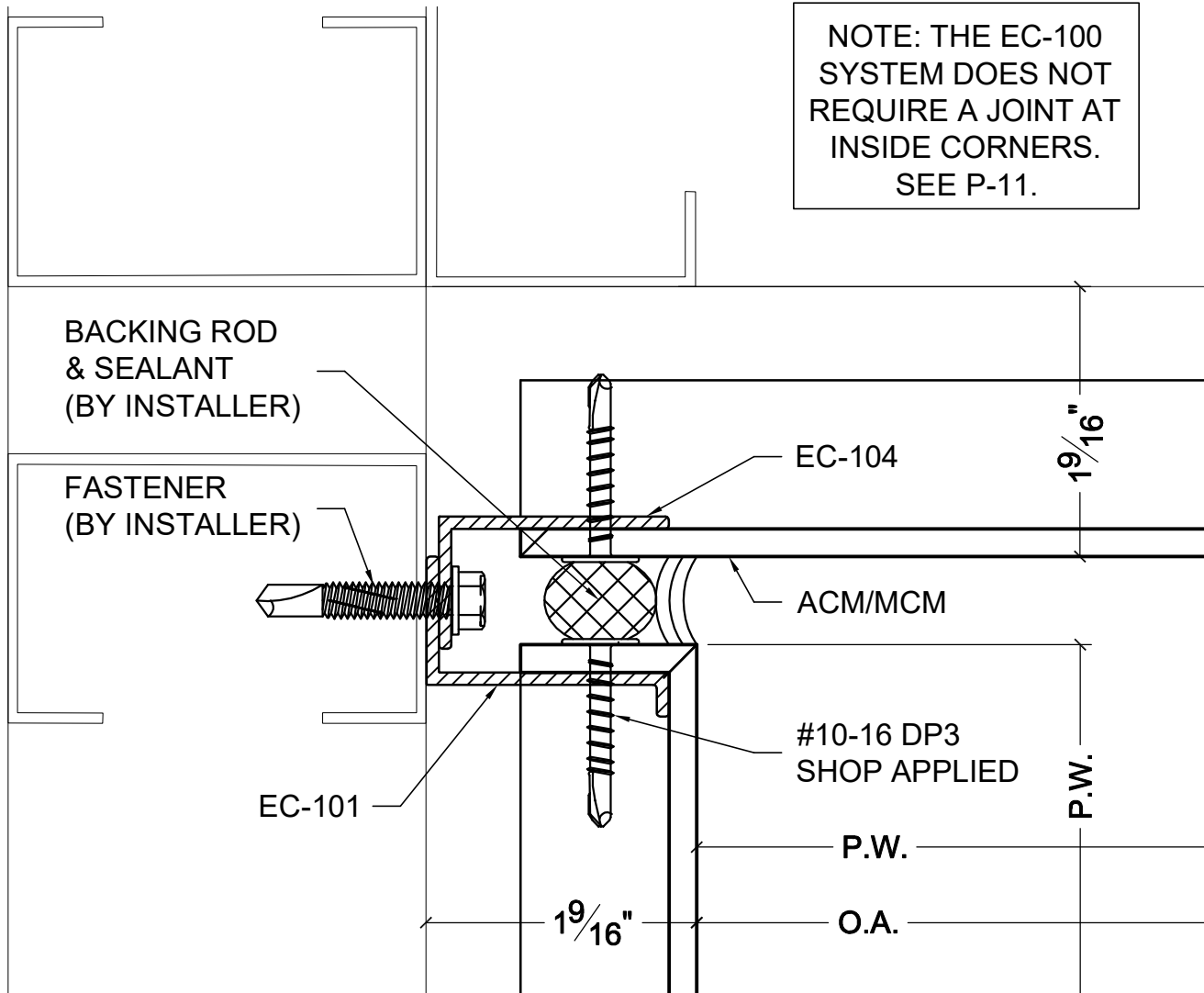
ROUTE & RETURN CAULKED SYSTEM



East Coast Metal Systems, Inc  
625 Distribution Road  
Triadelphia, WV 26059  
www.ecmsinc.net

P: (304) 909-4220 F: (304) 909 4242

NOTE: THE EC-100  
SYSTEM DOES NOT  
REQUIRE A JOINT AT  
INSIDE CORNERS.  
SEE P-11.



## INSIDE CORNER CONDITION WITH JOINT

1:1

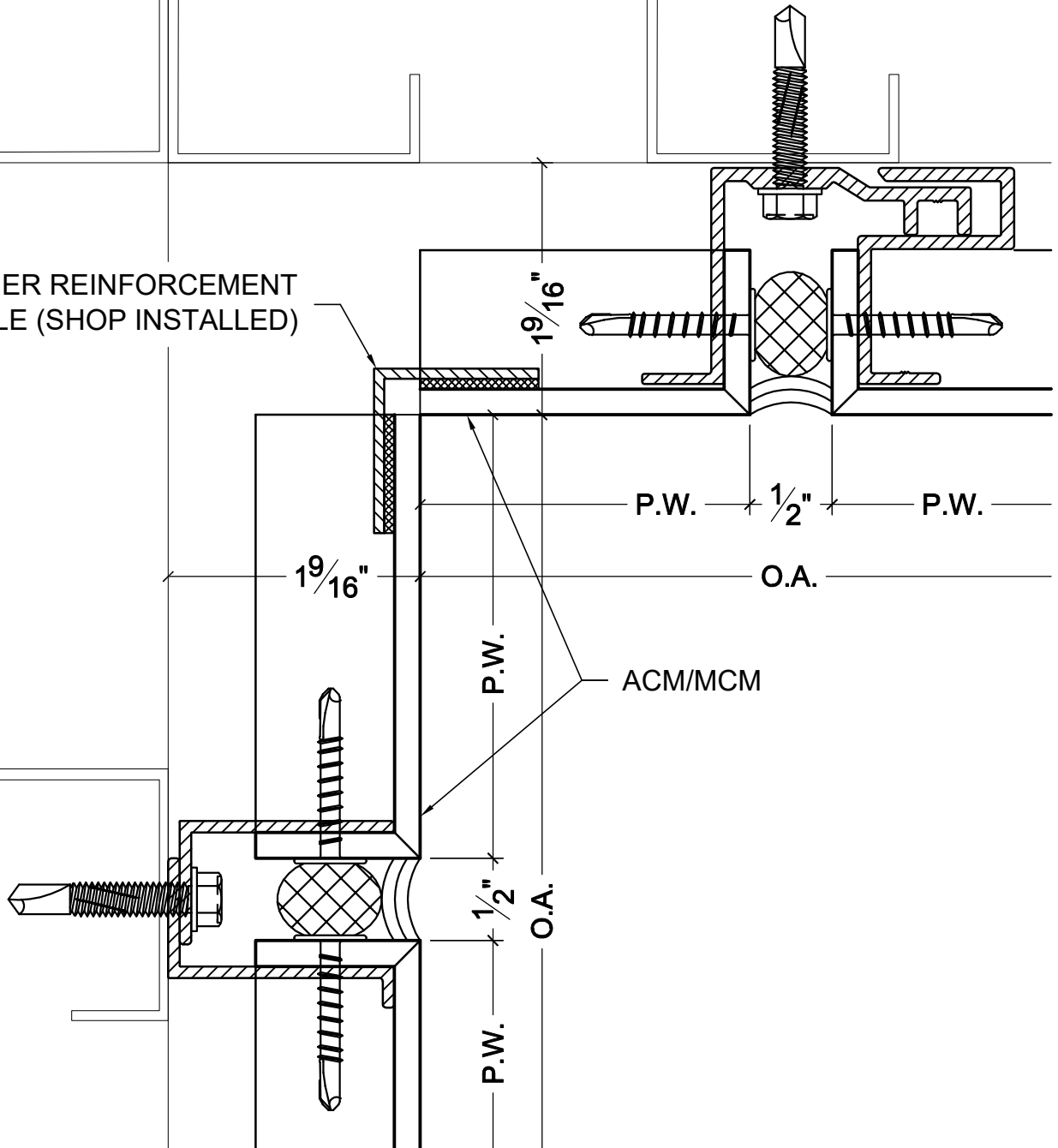
# EC-100

ROUTE & RETURN CAULKED SYSTEM

  
**EAST COAST**  
METAL SYSTEMS

East Coast Metal Systems, Inc  
625 Distribution Road  
Triadelphia, WV 26059  
[www.ecmsinc.net](http://www.ecmsinc.net)  
P: (304) 909-4220 F: (304) 909 4242

CORNER REINFORCEMENT  
ANGLE (SHOP INSTALLED)



**INSIDE CORNER CONDITION  
NO JOINT**

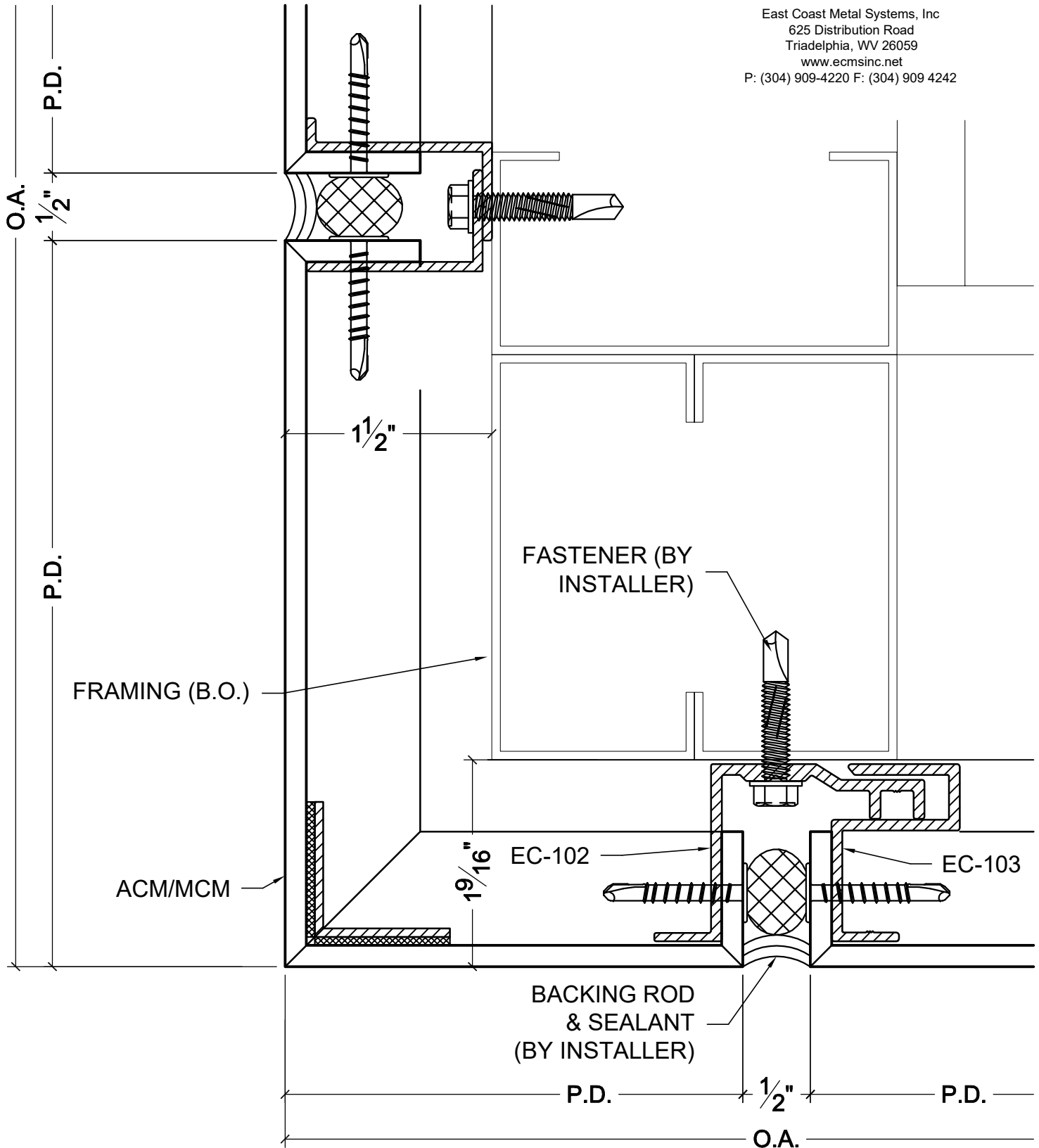
1:1

# EC-100

ROUTE & RETURN CAULKED SYSTEM

  
**EAST COAST**  
METAL SYSTEMS

East Coast Metal Systems, Inc  
625 Distribution Road  
Triadelphia, WV 26059  
www.ecmsinc.net  
P: (304) 909-4220 F: (304) 909 4242



## OUTSIDE CORNER/FASCIA SOFFIT

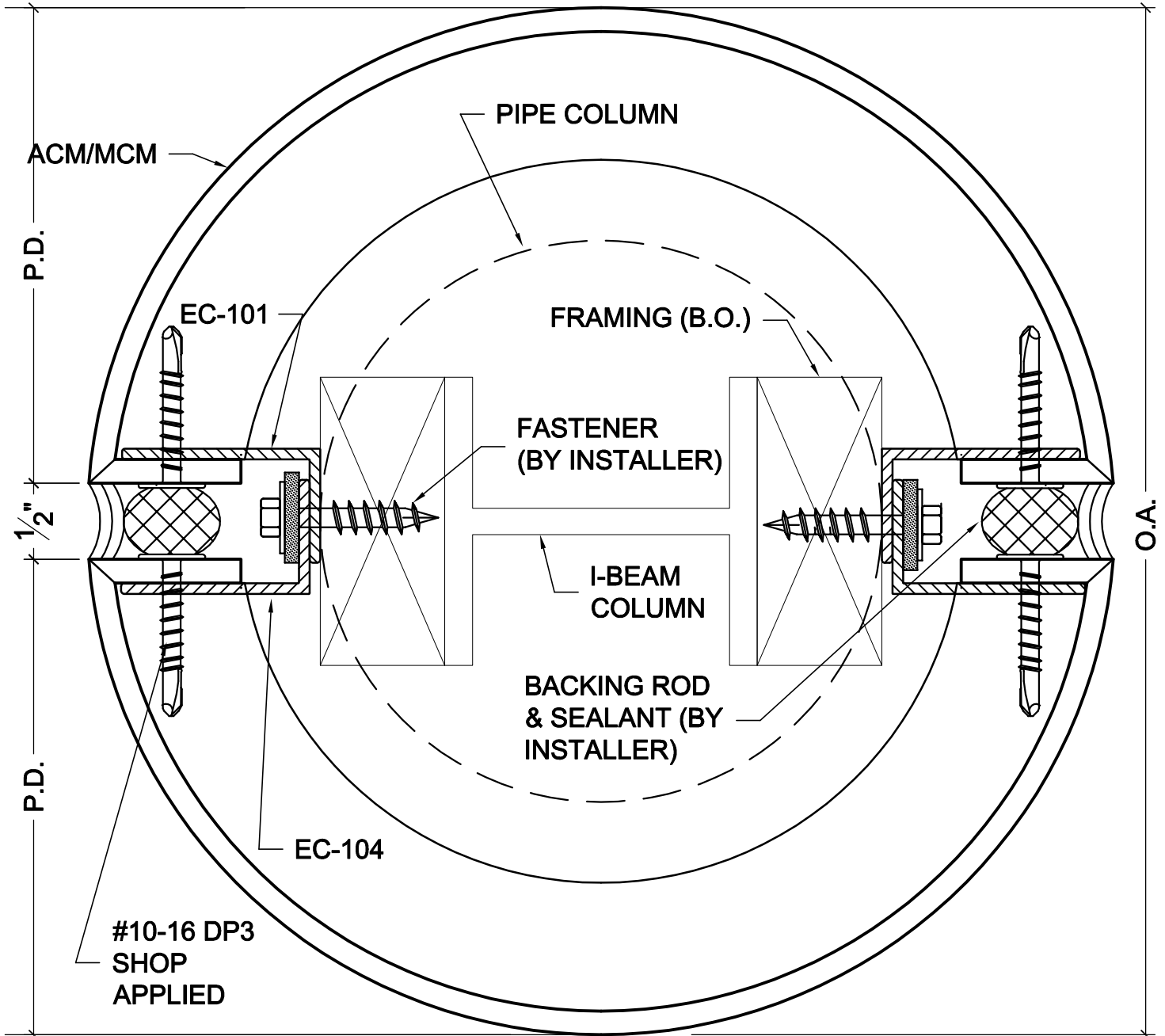
1:1

# EC-100

ROUTE & RETURN CAULKED SYSTEM

  
**EAST COAST**  
METAL SYSTEMS

East Coast Metal Systems, Inc  
625 Distribution Road  
Triadelphia, WV 26059  
www.ecmsinc.net  
P: (304) 909-4220 F: (304) 909 4242



## CONDITION AT COLUMN

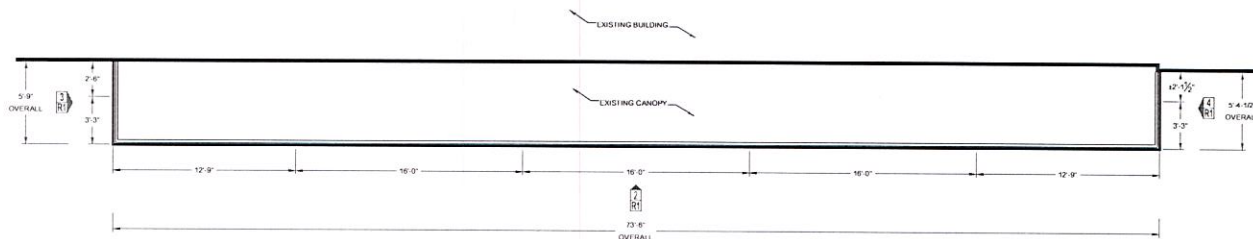
1:1



2474 EAST MAIN STREET  
BEXLEY, OH 43209

JOB TYPE - EC-100 PANELS

KRSM JOB #: V2-3182



1 CANOPY PLAN  
R1  
N.M.S. 1/4" = 1'-0"

*[Signature]*

approved as noted  
(see page 2)  
3/20/25



2 FRONT ELEVATION  
R1  
N.M.S. 1/4" = 1'-0"

4 RIGHT SIDE ELEVATION  
R1  
N.M.S. 1/4" = 1'-0"

3 LEFT SIDE ELEVATION  
R1  
N.M.S. 1/4" = 1'-0"

DRAWING SHEET LIST	
R1	CANOPY PLAN AND ELEVATIONS
D1	CANOPY DETAILS

PROJECT TEAM	
PROJECT MANAGER	SS
ESTIMATOR	AL
UNDERLAWER	DR
DRAWN BY	DS

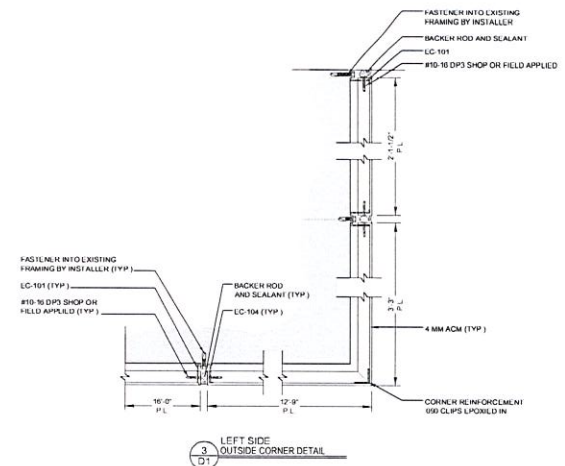
ISSUED FOR	
APPROVAL	03/16/2025

DRAWING REVISIONS	
Δ	
Δ	
Δ	

SCALE: AS NOTED

R1

CANOPY PLAN  
AND ELEVATIONS



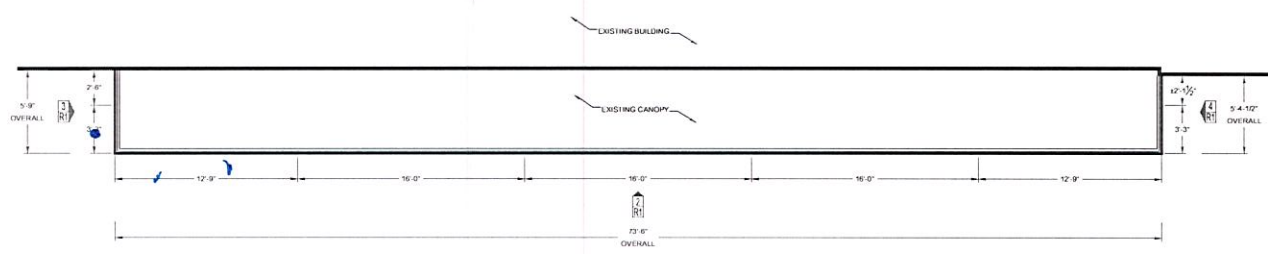
  
approved as noted  
3/20/25

DRAWING SHEET LIST	
H1	CANOPY PLAN AND ELEVATIONS
D1	CANOPY DETAILS
PROJECT TEAM	
PROJECT MANAGER	SS
DESIGNER	JS
LOGICAL ENGINEER	DP
DESIGNER	DS
ISSUED FOR	
APPROVAL	SD 18/02/21
DRAWING REVISIONS	
Δ	
Δ	
Δ	
SCALE: 3/4"=1'-0"	
D1	
CANOPY DETAILS	

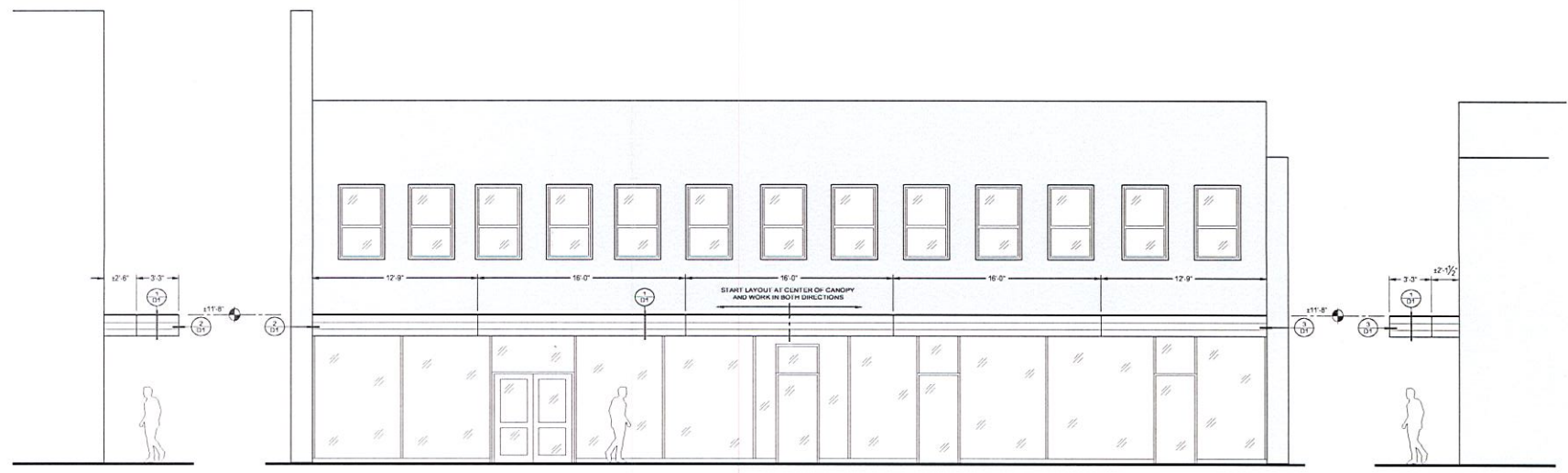


2474 EAST MAIN STREET  
BEXLEY, OH. 43209

JOB TYPE - EC-100 PANELS  
KRS.M JOB #: V2-3182



1 CANOPY PLAN  
R1 N.E.E. 1'-4"=1'-0"  
0 5 10



3 LEFT SIDE ELEVATION  
R1 N.E.E. 1'-4"=1'-0"  
0 5 10

2 FRONT ELEVATION  
R1 N.E.E. 1'-4"=1'-0"  
0 5 10

4 RIGHT SIDE ELEVATION  
R1 N.E.E. 1'-4"=1'-0"  
0 5 10

DRAWING SHEET LIST

H1	CANOPY PLAN AND ELEVATIONS
D1	CANOPY DETAILS

PROJECT TEAM	
PROJECT MANAGER	SS
ESTIMATOR	JL
ENGINEER/ARCHITECT	DR
DRAWN BY	DS
ISSUED FOR	
APPROVAL	RETRACTED

DRAWING REVISIONS	
1	
2	
3	

SCALE: AS NOTED

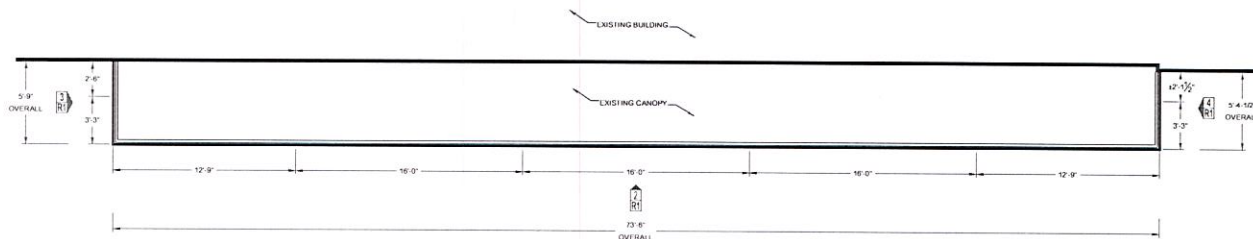
R1

CANOPY PLAN AND ELEVATIONS

2474 EAST MAIN STREET  
BEXLEY, OH 43209

JOB TYPE - EC-100 PANELS

KRSM JOB #: V2-3182



1 CANOPY PLAN  
R1  
S.M.E. 1/4" = 1'-0"

*[Signature]*

approved as noted  
(see page 2)  
3/20/25



3 LEFT SIDE ELEVATION  
R1  
S.M.E. 1/4" = 1'-0"

2 FRONT ELEVATION  
R1  
S.M.E. 1/4" = 1'-0"

4 RIGHT SIDE ELEVATION  
R1  
S.M.E. 1/4" = 1'-0"

DRAWING SHEET LIST	
H1	CANOPY PLAN AND ELEVATIONS
D1	CANOPY DETAILS

PROJECT TEAM	
PROJECT MANAGER	SS
ESTIMATOR	AL
UNDERLAWER	DR
DRAWN BY	DS

ISSUED FOR	
APPROVAL	03/19/2025

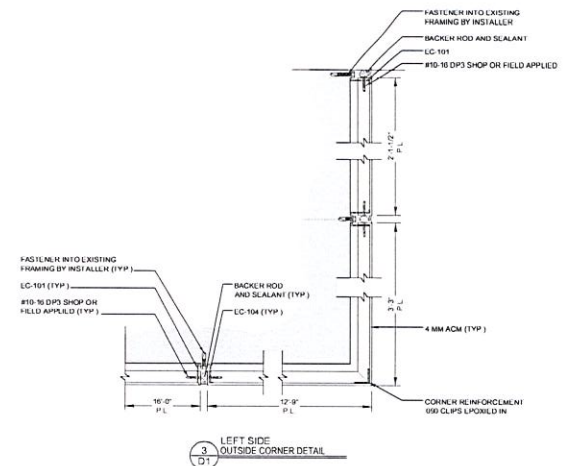
DRAWING REVISIONS	
Δ	
Δ	
Δ	

SCALE: AS NOTED

**R1**

CANOPY PLAN  
AND ELEVATIONS





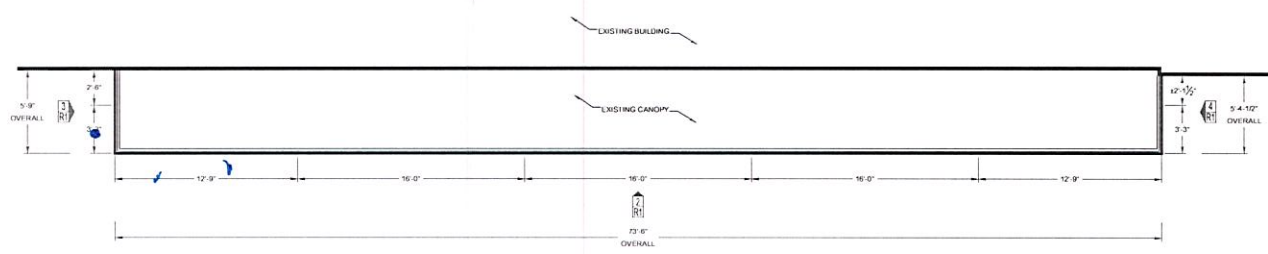
  
approved as noted  
3/20/25

DRAWING SHEET LIST	
H1	CANOPY PLAN AND ELEVATIONS
D1	CANOPY DETAILS
PROJECT TEAM	
PROJECT MANAGER	SS
DESIGNER	JS
LOGICAL ENGINEERING	DP
DESIGNER	DS
ISSUED FOR	
APPROVAL	SD 18/02/20
DRAWING REVISIONS	
Δ	
Δ	
Δ	
SCALE: 3/4"=1'-0"	
D1	
CANOPY DETAILS	

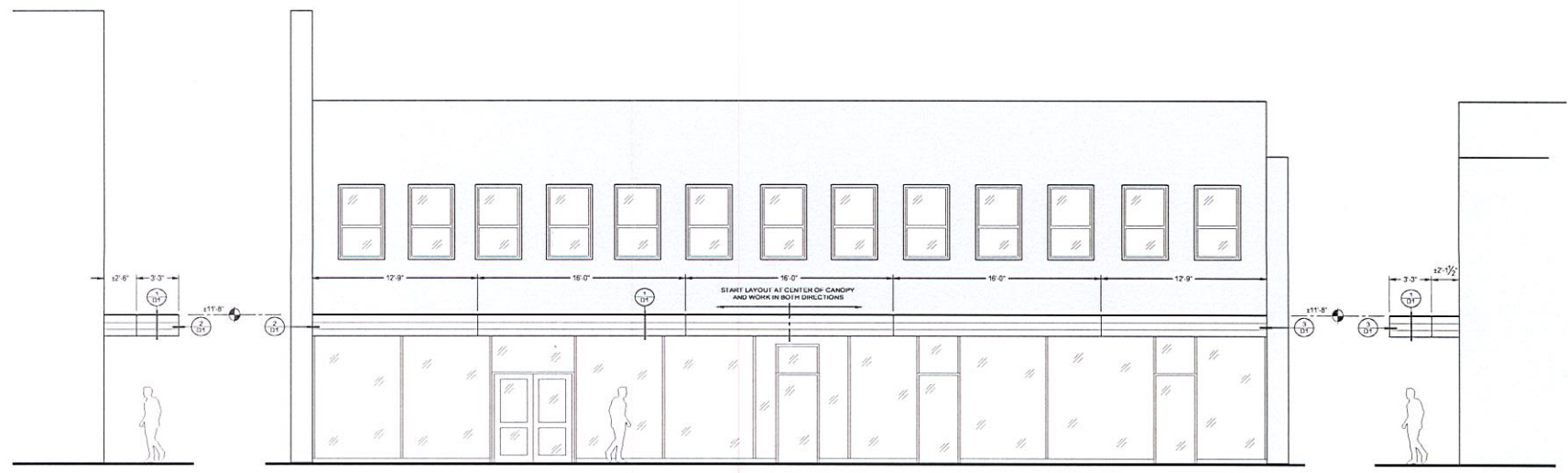


2474 EAST MAIN STREET  
BEXLEY, OH. 43209

JOB TYPE - EC-100 PANELS  
KRS.M JOB #: V2-3182



1 CANOPY PLAN  
R1 N.E.E. 1'-4"=1'-0"  
0 5 10



3 LEFT SIDE ELEVATION  
R1 N.E.E. 1'-4"=1'-0"  
0 5 10

2 FRONT ELEVATION  
R1 N.E.E. 1'-4"=1'-0"  
0 5 10

4 RIGHT SIDE ELEVATION  
R1 N.E.E. 1'-4"=1'-0"  
0 5 10

DRAWING SHEET LIST

H1	CANOPY PLAN AND ELEVATIONS
D1	CANOPY DETAILS

PROJECT TEAM	
PROJECT MANAGER	SS
ESTIMATOR	JL
ENGINEER/ARCHITECT	DR
DRAWN BY	DS
ISSUED FOR	
APPROVAL	RETRACTED

DRAWING REVISIONS	
1	
2	
3	

SCALE: AS NOTED

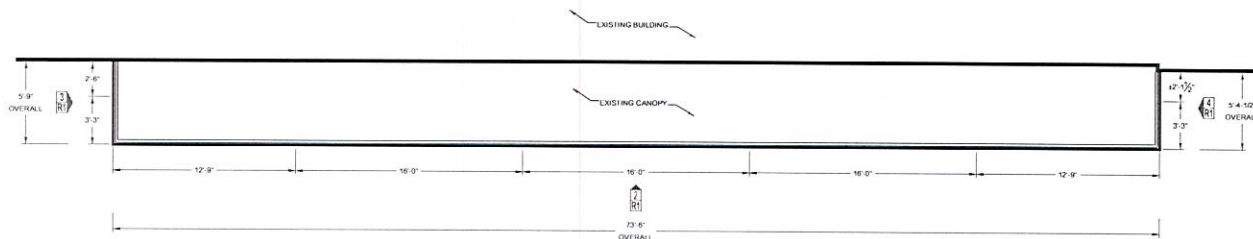
R1

CANOPY PLAN AND ELEVATIONS

2474 EAST MAIN STREET  
BEXLEY, OH 43209

JOB TYPE - EC-100 PANELS

KRSM JOB #: V2-3182



1 CANOPY PLAN  
R1  
SCALE: 1/4" = 1'-0"

*[Signature]*

approved as noted  
(see page 2)  
3/20/25



2 FRONT ELEVATION  
R1  
SCALE: 1/4" = 1'-0"

4 RIGHT SIDE ELEVATION  
R1  
SCALE: 1/4" = 1'-0"

3 LEFT SIDE ELEVATION  
R1  
SCALE: 1/4" = 1'-0"

DRAWING SHEET LIST	
R1	CANOPY PLAN AND ELEVATIONS
D1	CANOPY DETAILS

PROJECT TEAM	
PROJECT MANAGER	SS
ESTIMATOR	AL
UNDERLAWER	DF
DRAWN BY	DS

ISSUED FOR	
APPROVAL	03/16/2025

DRAWING REVISIONS	
Δ	
Δ	
Δ	

SCALE: AS NOTED

R1

CANOPY PLAN  
AND ELEVATIONS

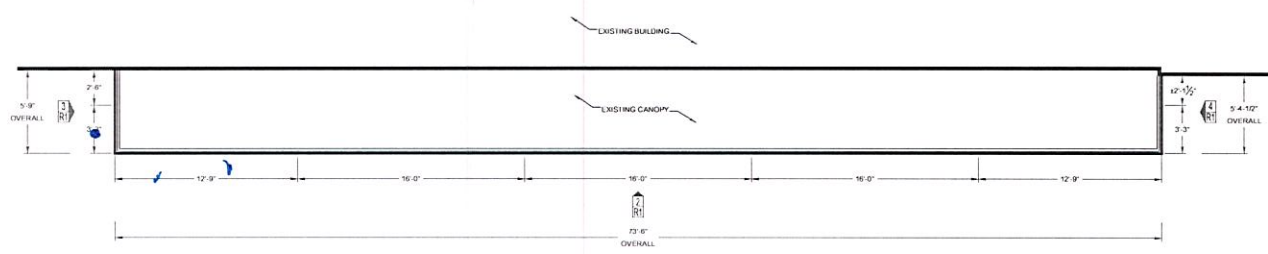


DRAWING SHEET LIST	
H1	CANOPY PLAN AND ELEVATIONS
D1	CANOPY DETAILS
PROJECT TEAM	
PROJECT MANAGER	SS
OWNER	JS
DESIGN ARCHITECT	DP
DESIGNER	DS
ISSUED FOR	
APPROVAL	SD 18/02/20
DRAWING REVISIONS	
△	
△	
△	
SCALE: 3/4"=1'-0"	
D1	
CANOPY DETAILS	

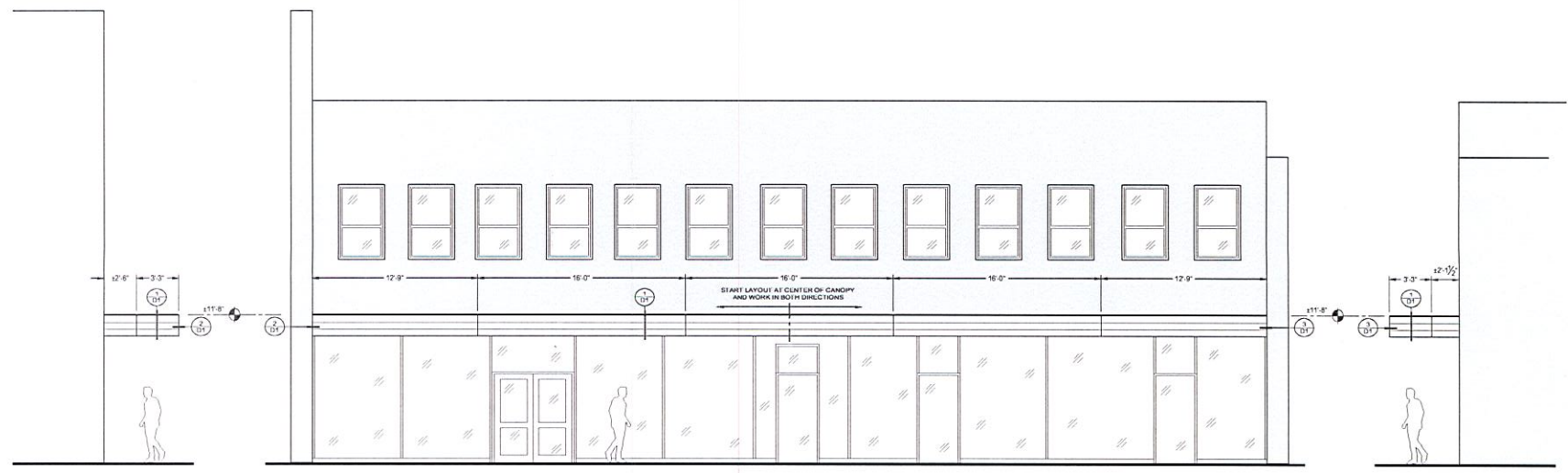


2474 EAST MAIN STREET  
BEXLEY, OH. 43209

JOB TYPE - EC-100 PANELS  
KRS.M JOB #: V2-3182



1 CANOPY PLAN  
R1 N.E.E. 1'-4"=1'-0"  
0 5 10



3 LEFT SIDE ELEVATION  
R1 N.E.E. 1'-4"=1'-0"  
0 5 10

2 FRONT ELEVATION  
R1 N.E.E. 1'-4"=1'-0"  
0 5 10

4 RIGHT SIDE ELEVATION  
R1 N.E.E. 1'-4"=1'-0"  
0 5 10

DRAWING SHEET LIST

H1	CANOPY PLAN AND ELEVATIONS
D1	CANOPY DETAILS

PROJECT TEAM	
PROJECT MANAGER	SS
ESTIMATOR	JL
ENGINEER/ARCHITECT	DR
DRAWN BY	DS
ISSUED FOR	
APPROVAL	RETRACTED

DRAWING REVISIONS	
1	
2	
3	

SCALE: AS NOTED

R1

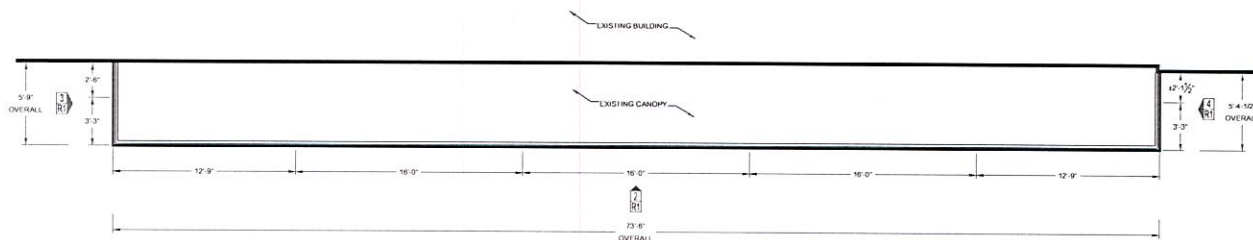
CANOPY PLAN  
AND ELEVATIONS



2474 EAST MAIN STREET  
BEXLEY, OH 43209

JOB TYPE - EC-100 PANELS

KRSM JOB #: V2-3182



1 CANOPY PLAN  
R1  
SCALE: 1/4" = 1'-0"

*[Signature]*

approved as noted  
(see page 2)  
3/20/25



2 FRONT ELEVATION  
R1  
SCALE: 1/4" = 1'-0"

4 RIGHT SIDE ELEVATION  
R1  
SCALE: 1/4" = 1'-0"

3 LEFT SIDE ELEVATION  
R1  
SCALE: 1/4" = 1'-0"

DRAWING SHEET LIST	
R1	CANOPY PLAN AND ELEVATIONS
D1	CANOPY DETAILS

PROJECT TEAM	
PROJECT MANAGER	SS
ESTIMATOR	AL
UNDERLAWER	DR
DRAWN BY	DS

ISSUED FOR	
APPROVAL	03/18/2025

DRAWING REVISIONS	
Δ	
Δ	
Δ	

SCALE: AS NOTED

R1

CANOPY PLAN  
AND ELEVATIONS



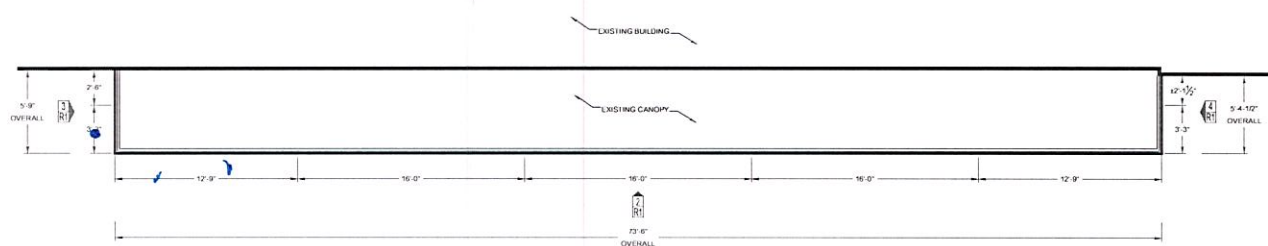


DRAWING SHEET LIST	
H1	CANOPY PLAN AND ELEVATIONS
D1	CANOPY DETAILS
PROJECT TEAM	
PROJECT MANAGER	SS
OWNER	A
ARCHITECT	DT
ENGINEER	DS
ISSUED FOR	
APPROVAL	01/18/2020
DRAWING REVISIONS	
△	
△	
△	
SCALE: 3"=1'-0"	
D1	
CANOPY DETAILS	

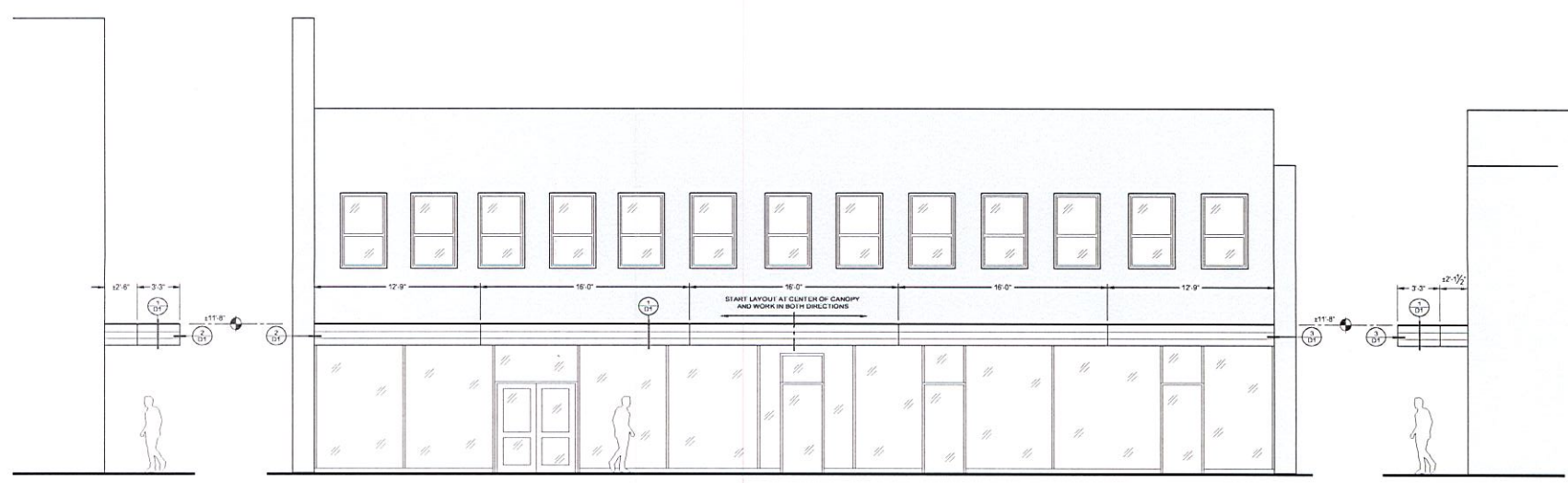


2474 EAST MAIN STREET  
BEXLEY, OH. 43209

JOB TYPE - EC-100 PANELS  
KRS.M JOB #: V2-3182



1 CANOPY PLAN  
R1 N.E.E. 1'-4"=1'-0"  
0 5 10



3 LEFT SIDE ELEVATION  
R1 N.E.E. 1'-4"=1'-0"  
0 5 10

2 FRONT ELEVATION  
R1 N.E.E. 1'-4"=1'-0"  
0 5 10

4 RIGHT SIDE ELEVATION  
R1 N.E.E. 1'-4"=1'-0"  
0 5 10

DRAWING SHEET LIST

H1	CANOPY PLAN AND ELEVATIONS
D1	CANOPY DETAILS

PROJECT TEAM	
PROJECT MANAGER	SS
ESTIMATOR	JL
ENGINEERING WORK	DE
DRAWN BY	DS
ISSUED FOR	
APPROVAL	RETRACTED

DRAWING REVISIONS

SCALE:	AS NOTED
--------	----------

R1

CANOPY PLAN  
AND ELEVATIONS



