

Franklin County Auditor's Office

Auditor

Michael Stinziano

Map Produced April 24, 2025

Planimetric Legend

Source: 2021 Aerial Photography

- Edge of Pavement
- Roadway Centerlines
- Railroad Centerlines
- Building Footprints
- Building Under Construction
- Creeks, Streams, Ditches
- Rivers & Ponds

Topographic Legend

Source: OSIP - 2019 LIDAR Collection

- Spot Elevation
- Index Contour
- Intermediate Contour

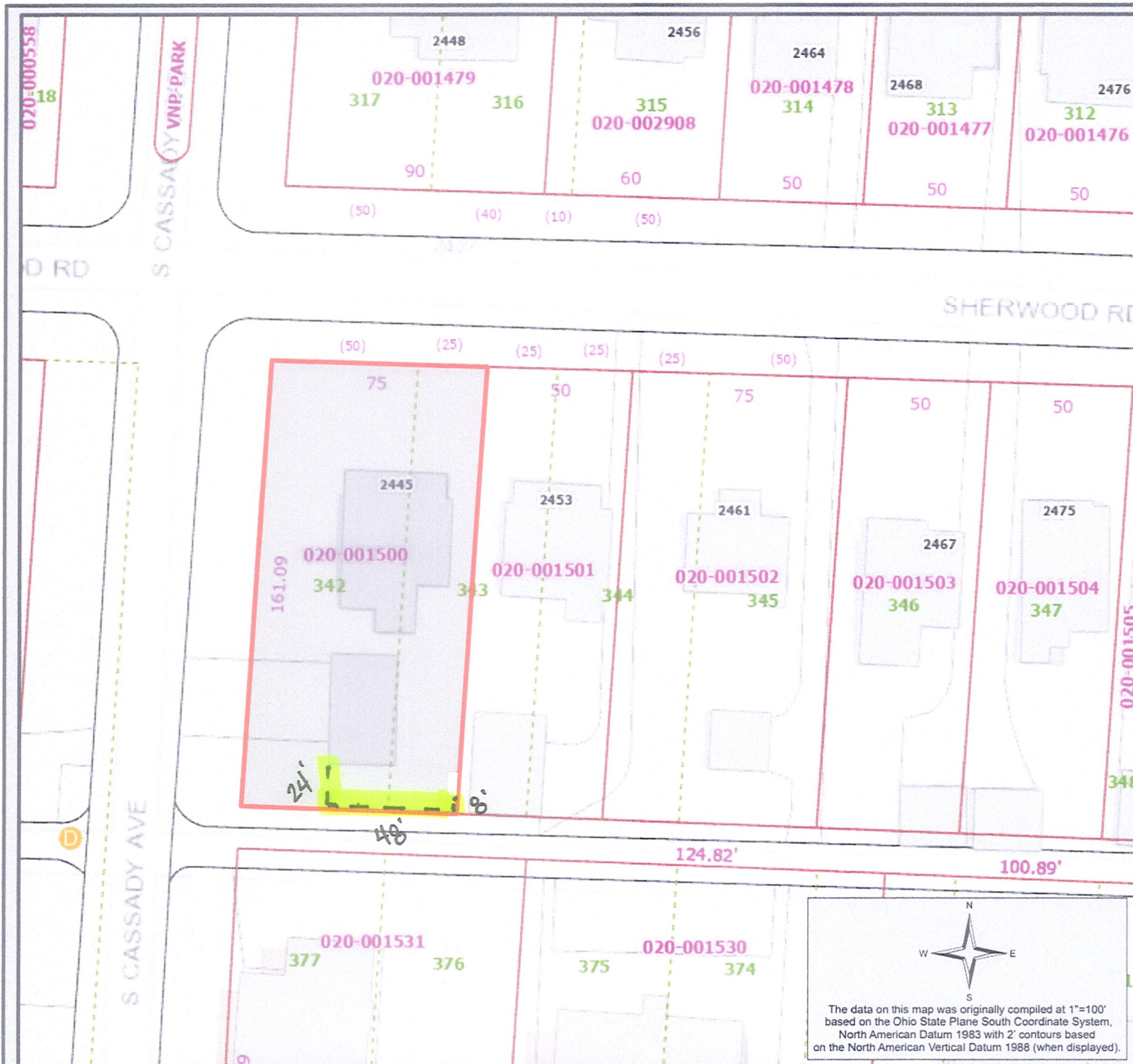
Appraisal Legend

Source: Franklin County Auditor & Engineer

- Parcel IDs
- Parcel Dimensions
- Lot Numbers
- Site Address
- Parcel Boundary
- Subdivision Boundary
- Condominium Boundary
- County Boundary
- City or Village Boundary
- Tax District Boundary
- School District Boundary
- Zip Code Boundary

This map is prepared for the real property inventory within the county. It is compiled from record deeds, survey plats, and other public records and data. Users of this map are notified that the public primary information sources should be considered for verification of the information contained on this map. The county and the mapping companies assume no legal responsibility for the information contained on this map. Please notify the Franklin County Auditor's GIS Department of any discrepancies.

For scaled maps, please visit the parcel viewer at <https://gis.franklincountyohio.gov/parcelviewer>



The data on this map was originally compiled at 1"=100' based on the Ohio State Plane South Coordinate System, North American Datum 1983 with 2' contours based on the North American Vertical Datum 1988 (when displayed).









TRUDEAU'S
LUTON
FENCE COMPANY
1014 876-8844

