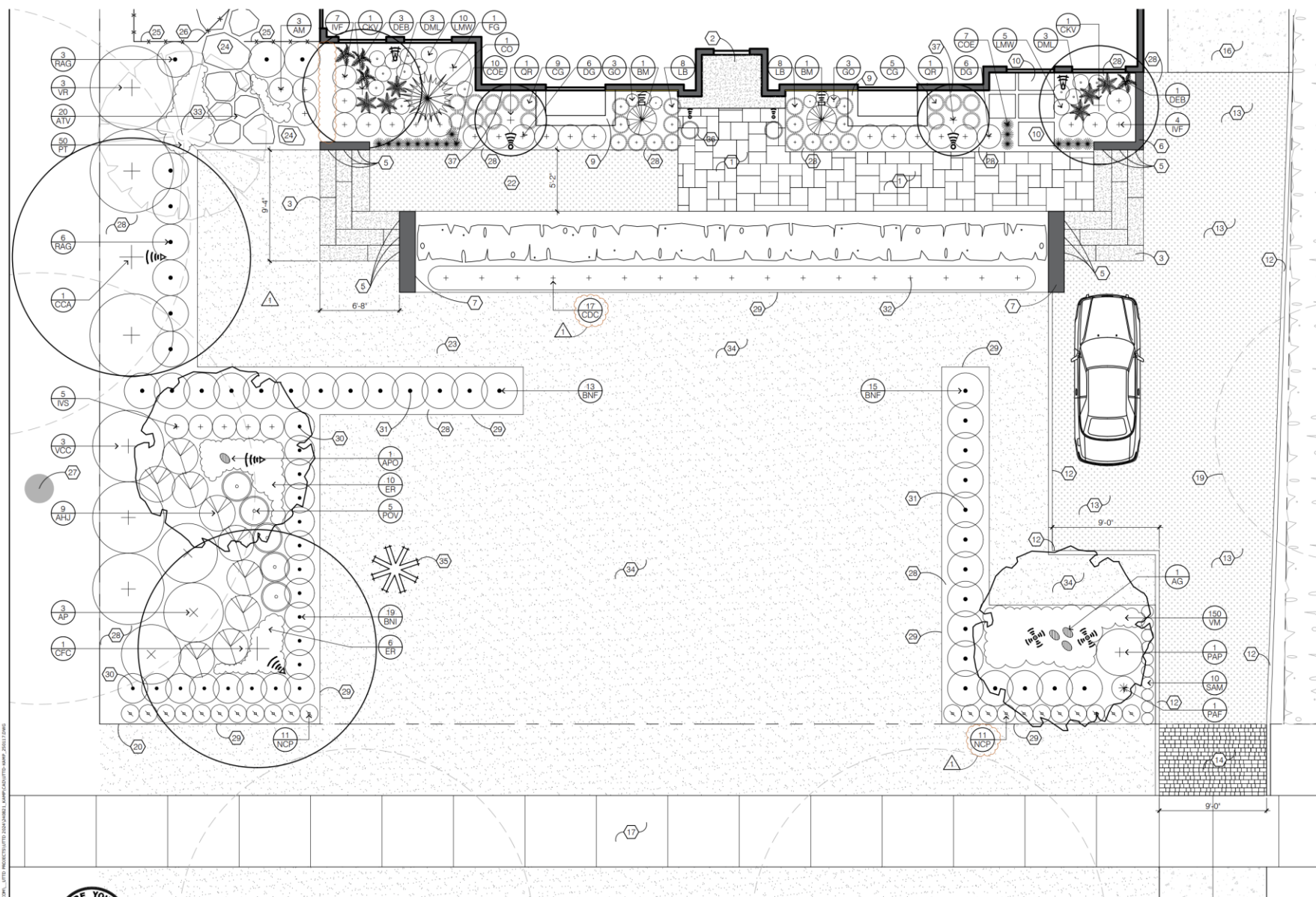


49 S. Parkview







1262.01 GENERAL REGULATIONS.

Off-street automobile parking spaces shall be provided for every land use on any lot or any time any building or structure is erected, enlarged or increased in capacity, or converted to a more intense use, in accordance with the following requirements:


(a) Each parking space shall have an area of not less than 162 square feet (9x18) exclusive of access drives or aisles, and shall be reasonably accessible and maintained in good condition, provided that up to 25% of the required parking spaces may be met with parking spaces for compact cars with an area of not less than 136 square feet (8.5 x 16 feet).

(b) There shall be provision for convenient and safe ingress and egress to all parking spaces from an appropriate public street or alley.

(c) All off-street parking areas, including access drives and aisles, shall be hard surfaced to provide a durable and dustless surface and shall be graded and maintained so that water does not unreasonably accumulate on such areas nor flow or drain onto adjacent property. All such areas shall be maintained in good condition, kept free of holes, trash and debris, and shall be adequately demarcated by periodic restriping or other means approved by the City.

(d) Off-street parking areas shall incorporate best practices for stormwater runoff mitigation, and require submittal of a stormwater mitigation plan, approved by the City.

(e) An access drive shall not exceed the normal width necessary to allow for a convenient movement of traffic and shall not be used for temporary or permanent parking. In the R-1, R-2, R-3, R-6, and R-12 Districts, access drives shall not be less than 8 feet and no larger than 12.5 feet in width and shall not occupy more than 25% of the front yard. Except as otherwise provided in Section 1262.06 for circular driveways, no more than one driveway or entrance leading from a street shall be permitted within the front yard of any property located in the R-1, R-2, R-3, R-6 or R-12 District.



S. Parkview Ave



KEY

Extra Space

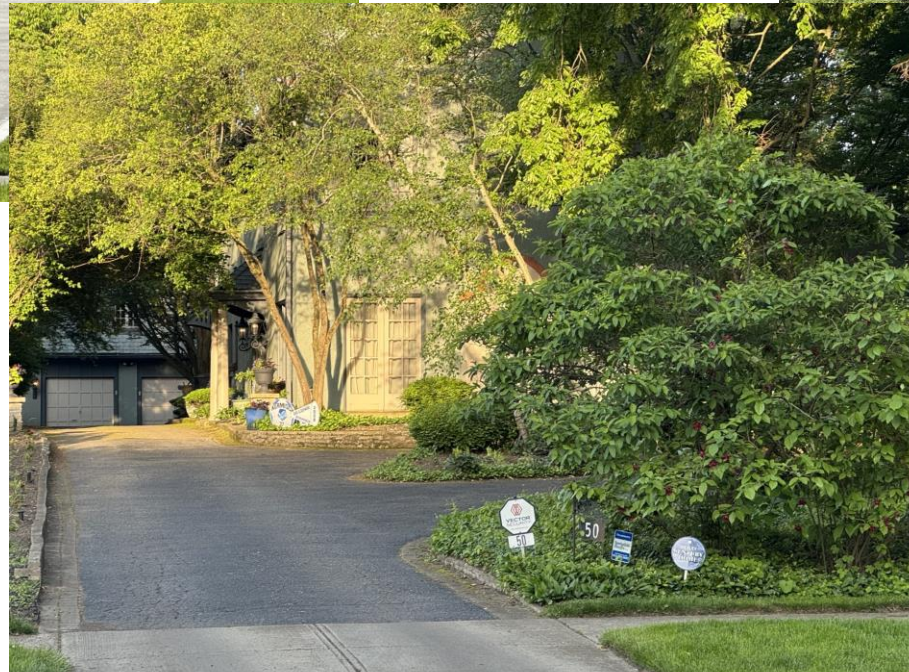


Circle Drive



S. Parkview Ave – Broad St & Powell Ave.

Front Parking Concealed By Landscape



CENTRAL BEXLEY RESIDENTIAL LOTS WITH FRONT PARKING*

S. Parkview Avenue

*Observational Data Provided by Eleanor Kamp

- 22 extra parking
- 39 extra parking
- 44 extra parking
- 50 circle driveway
- 95 circle driveway
- 100 circle driveway
- 135 more than 12 feet
- 151 circle driveway
- 173 more than 12 feet

- 195 circle driveway
- 241 circle driveway
- 295 extra parking
- 308 circle driveway
- 320 circle driveway
- 353 circle driveway
extra parking more than
twelve feet
- 375 extra parking
- 400 circle driveway

CENTRAL BEXLEY RESIDENTIAL LOTS WITH FRONT PARKING*

S. Columbia Ave

*Observational Data Provided by Eleanor Kamp

- 31 circle driveway, extra parking
- 83 circle driveway extra parking
- 130 circle driveway
- 140 circle parking
- 261 circle driveway
- 275 circle driveway
- 280 extra parking
- 297 more than 12 feet
- 318 more than 12 feet
- 336 circle driveway
- 341 more than 12 feet
- 360 extra parking
- 381 extra parking
- 419 extra parking
- 435 circle driveway