

COHATCH BEXLEY
EXTERIOR DESIGN UPDATES
6.2.2023
© Tim Lai ArchitecT



North Facade



West Facade



East Facade

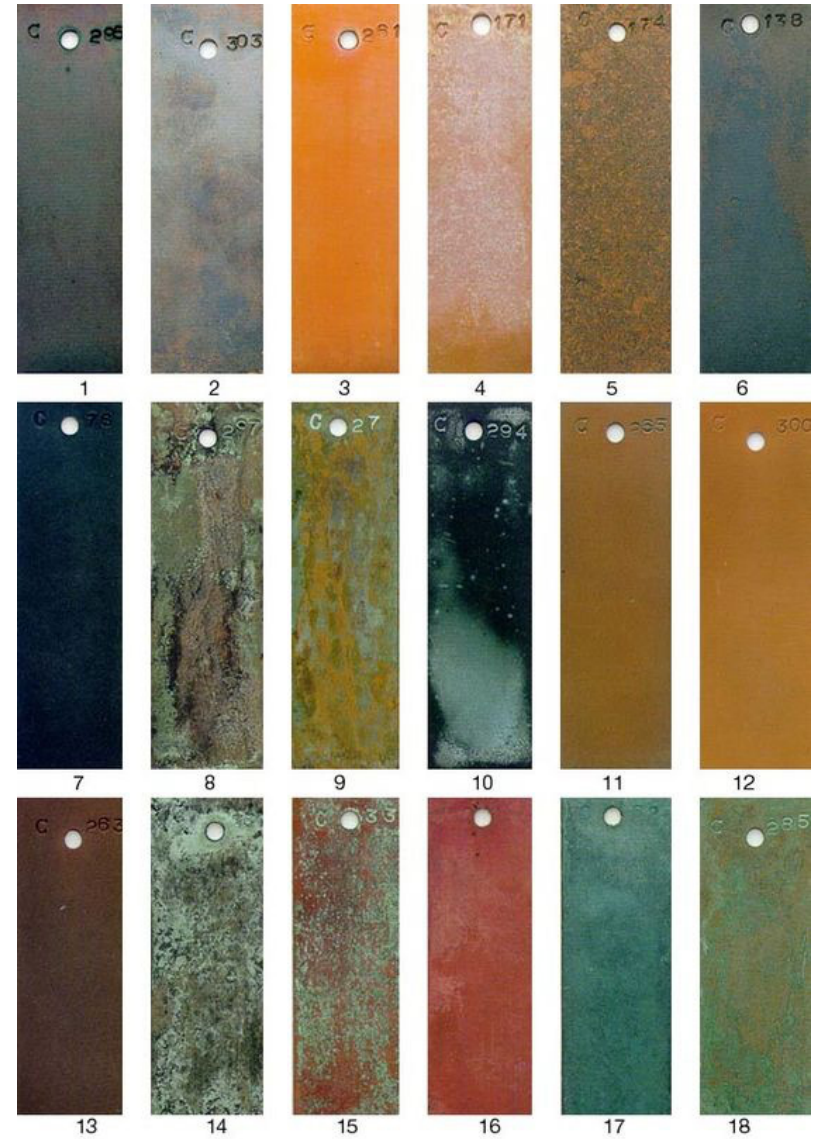
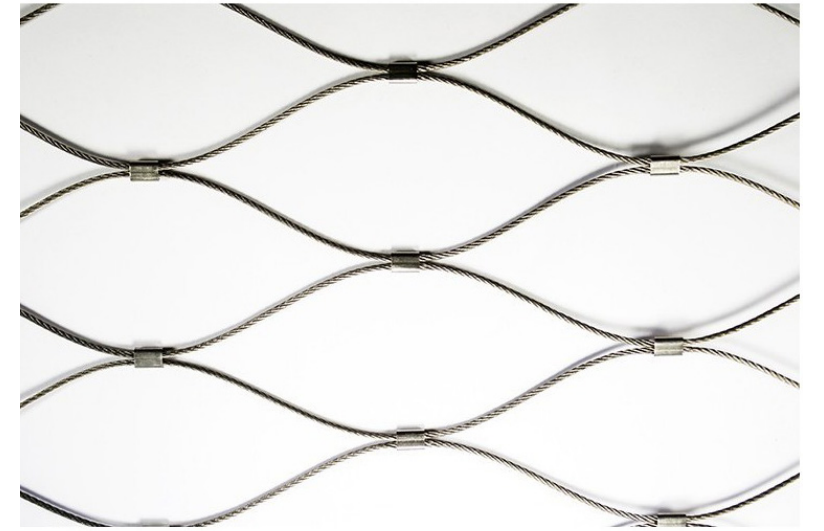
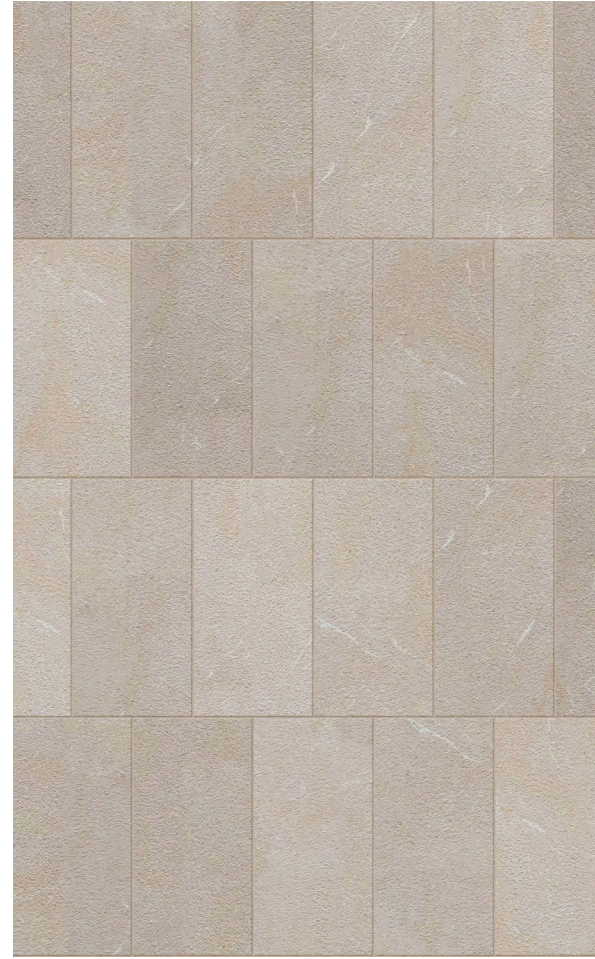


South Facade

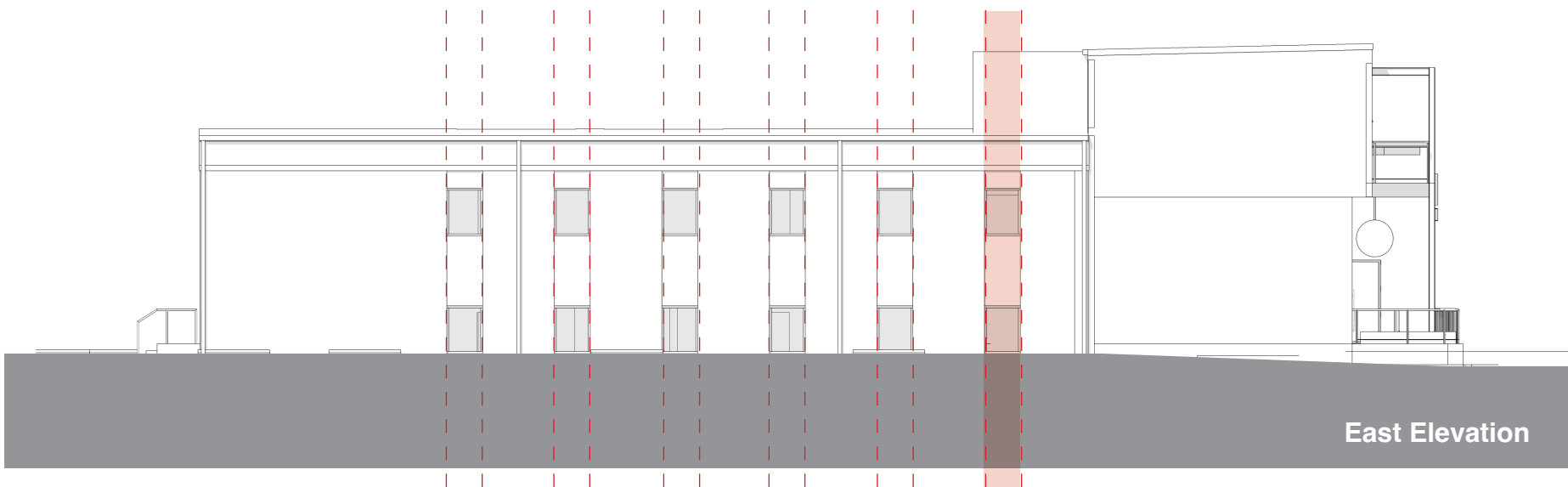
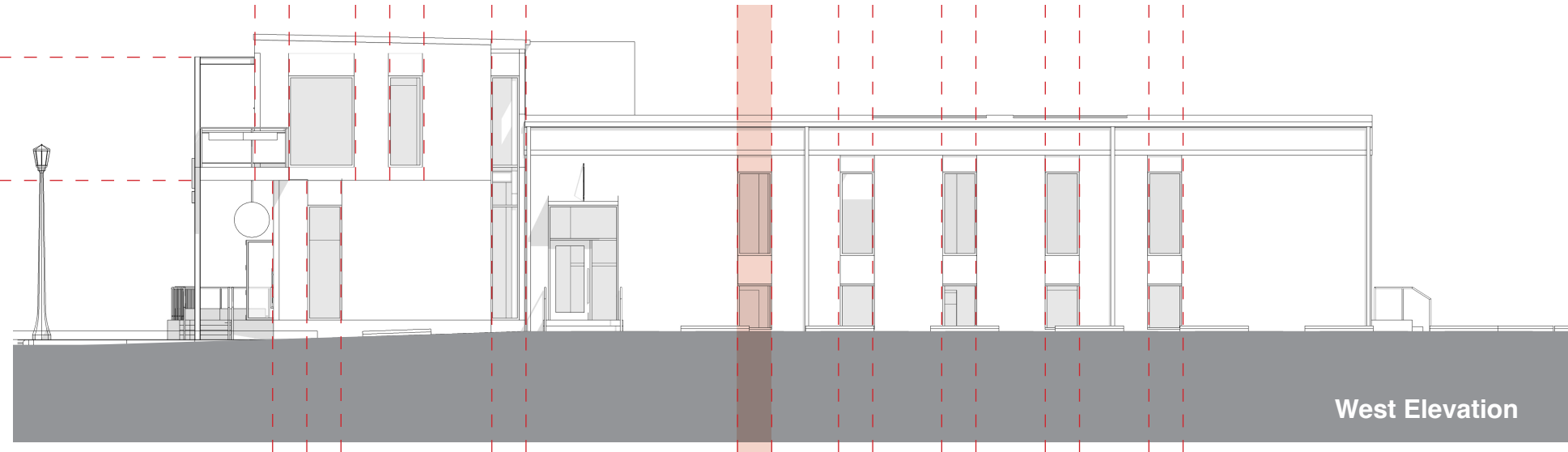
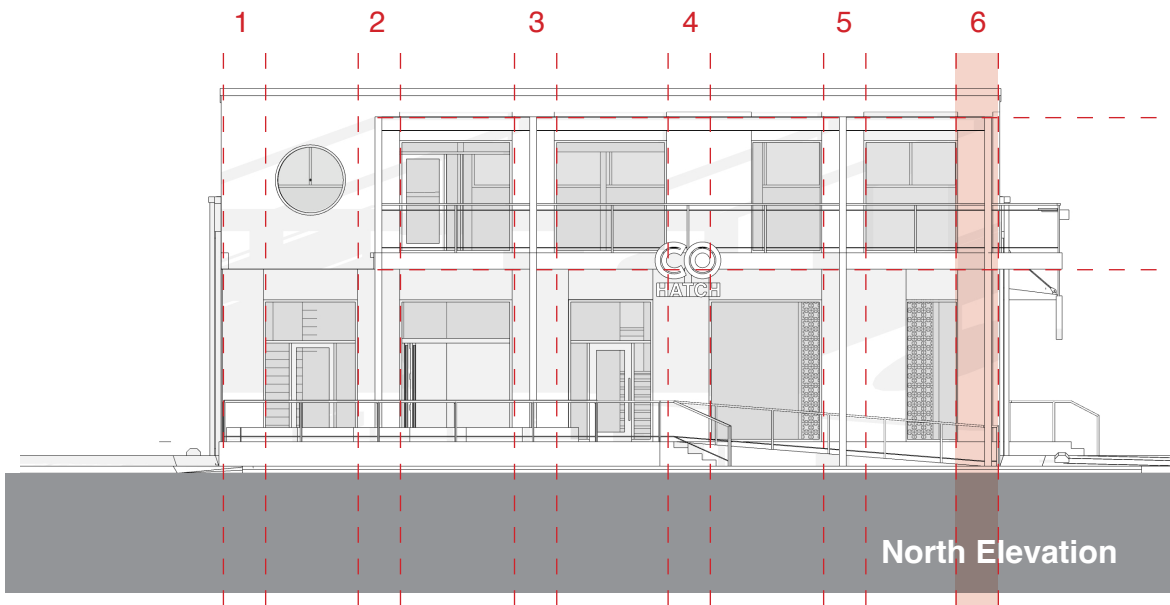
To create an addition to the existing mid-century office building that will complement each other with a shared proportion in window arrangement and contemporary use of limestone cladding and metal framing structure embodying coexistence of the past and present.

By moving the front of the building up to the sidewalk, it connects directly to the street. The balcony along the street front extends to downtown Bexley and creates a covered active patio and a covered entry ramp to welcome visitors.

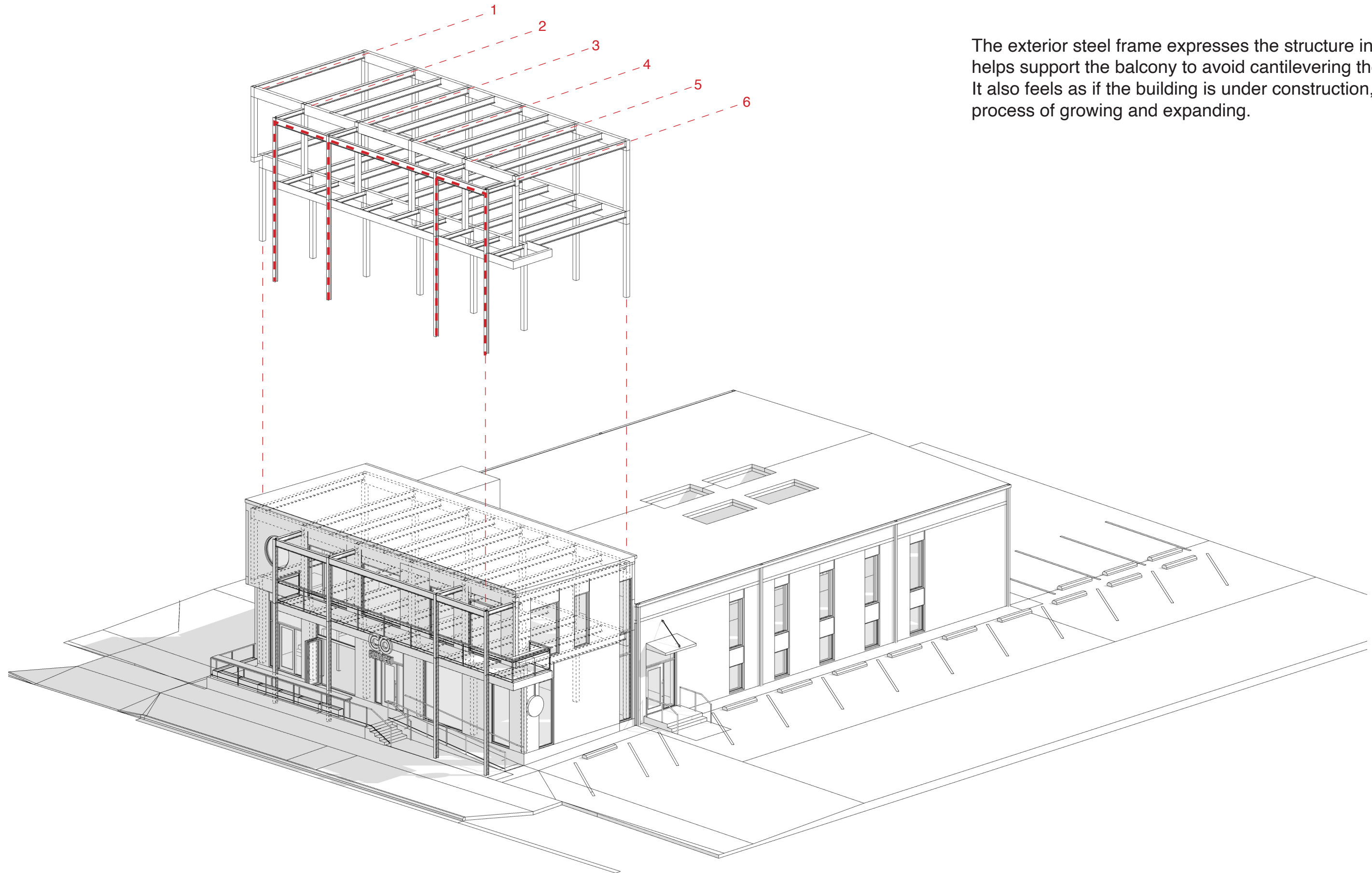


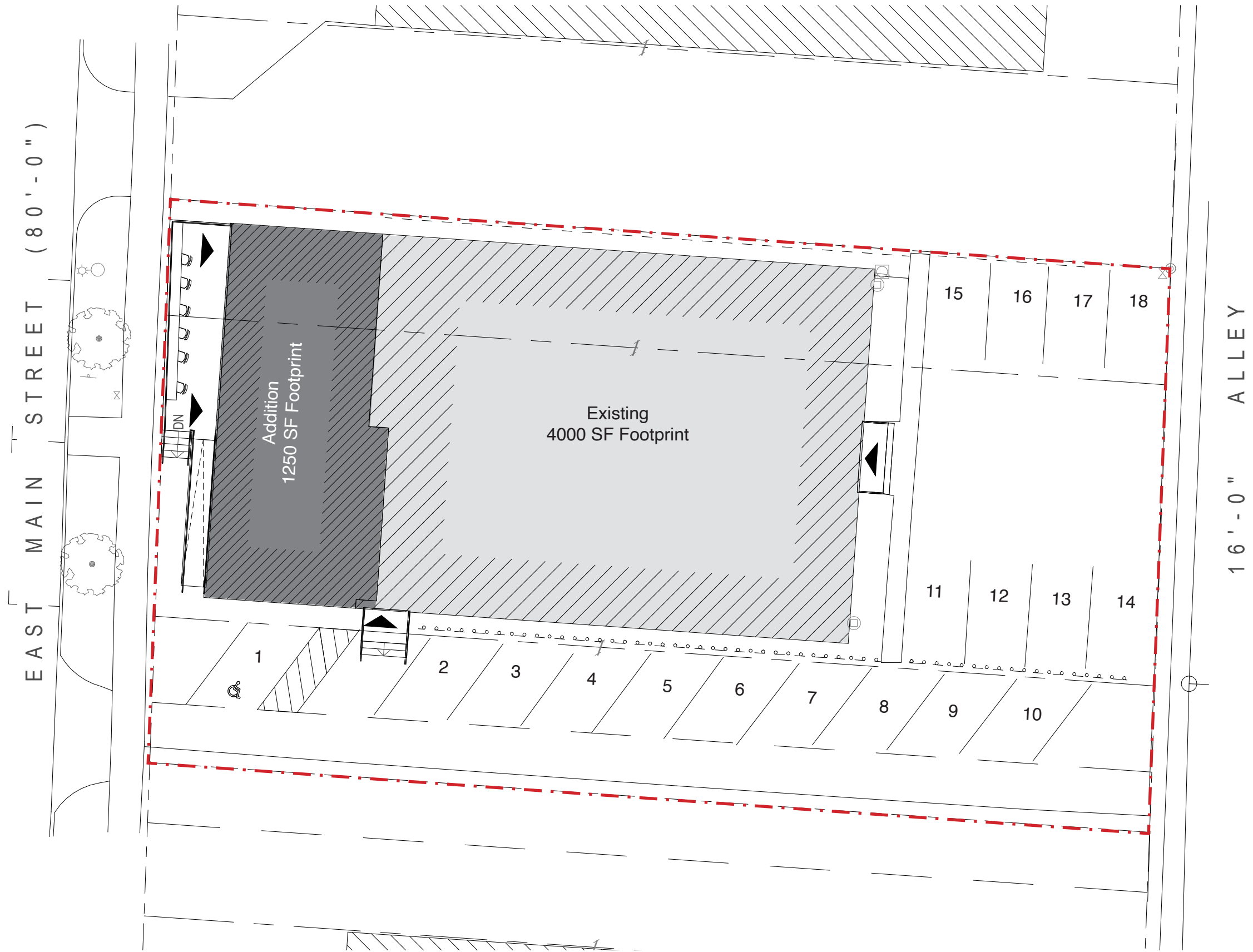


The front of the addition uses the same dimension of the old windows and create a new rhythm by turning the same width into the piers to create sizable storefront windows.



The exterior steel frame expresses the structure inside, and helps support the balcony to avoid cantilevering the structure. It also feels as if the building is under construction, in the process of growing and expanding.





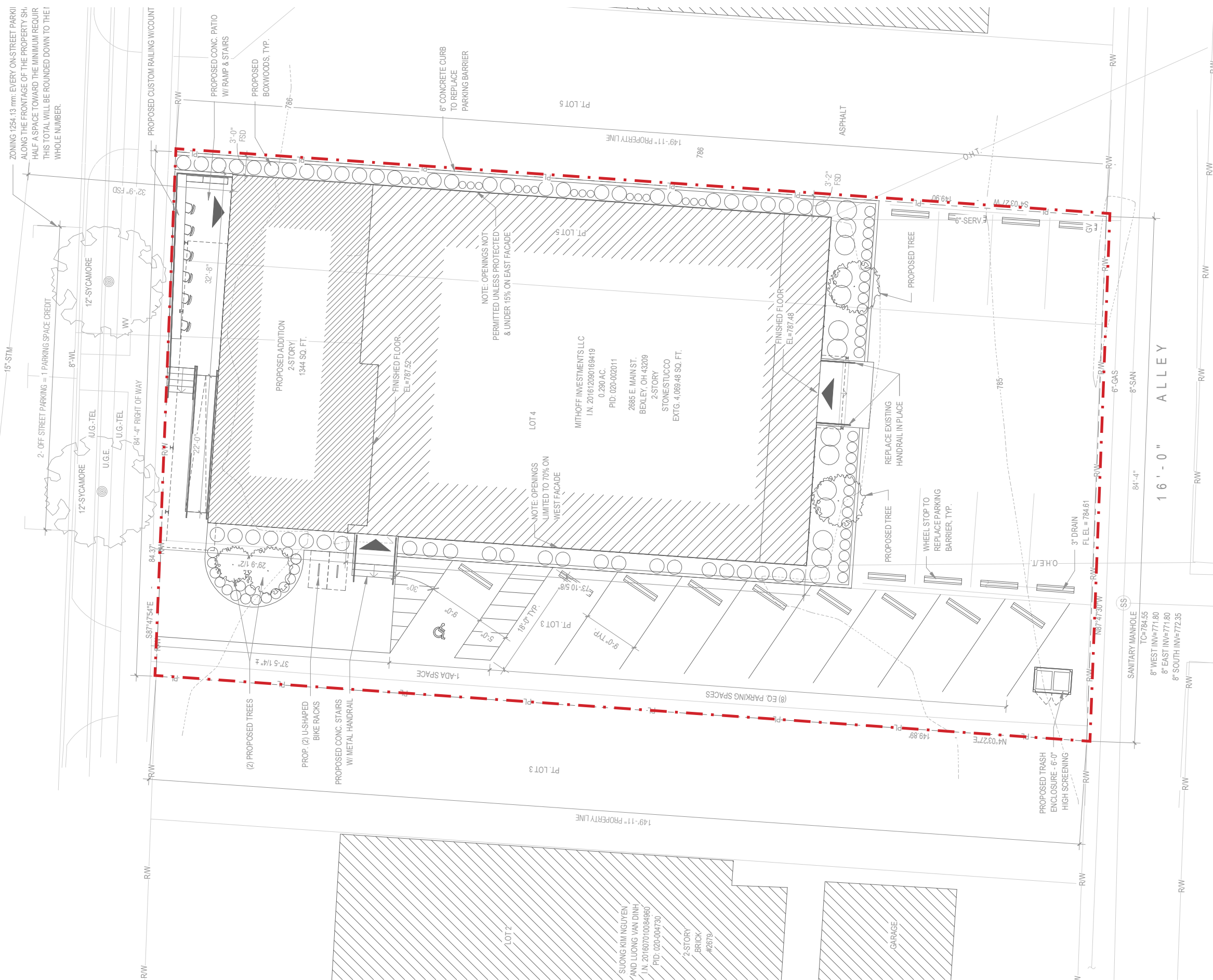
Site Plan

scale : 1/16" = 1'-0"





EAST MAIN STREET (80'-0")



EAST MAIN STREET (80' - 0")



Site Plan

scale : 1/16" = 1'-0"





North View

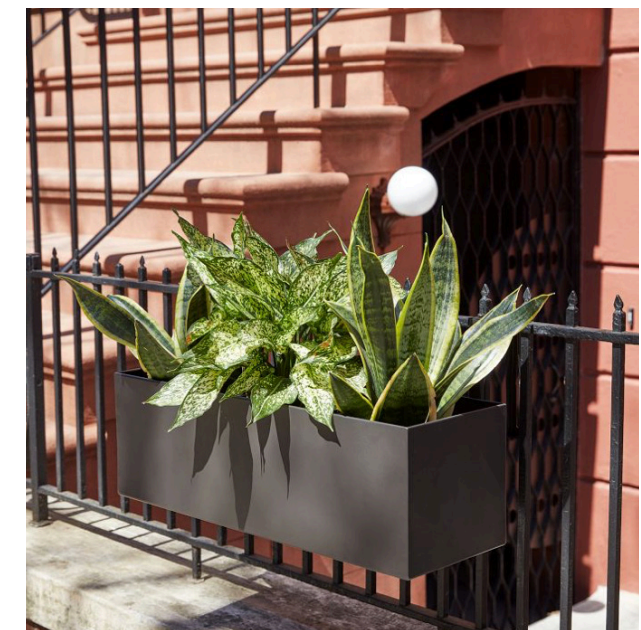




North Detail



WIRE NET & RAILING
CONNECTION EXAMPLE



WEST ELM, STREAMLINE METAL
RAILING PLANTER, ANTIQUE
BRONZE



North-West View



North-West Detail





North-West View



West Details



South-West Detail



North-East Detail





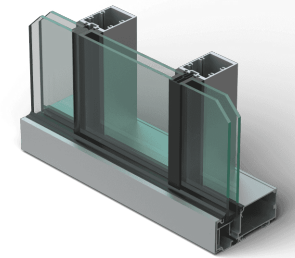
South-West View



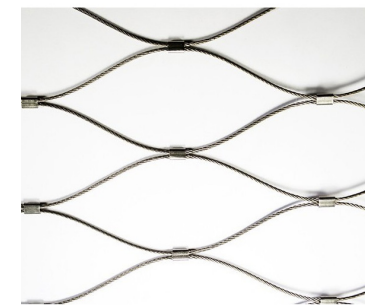




North-East View



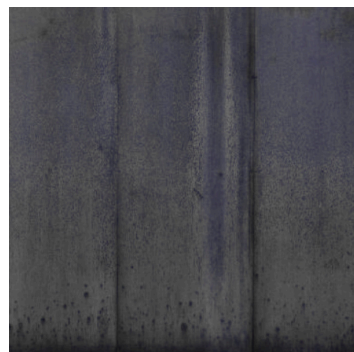
7. KAWNEER TRIFAB VERSAGLAZE FRAMING SYSTEM IN DARK BRONZE



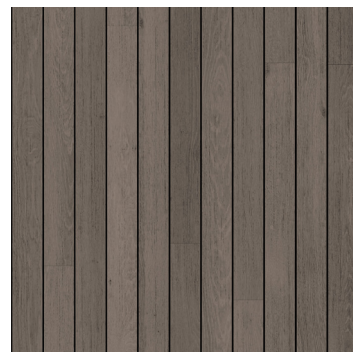
8. LUNAAPRO EXPAND WEB NET STAINLESS STEEL



1. LIMESTONE VENEER



2. STEEL W/ CUSTOM TEXTURE FINISH



3. NEW TECH COMPOSITE DECK



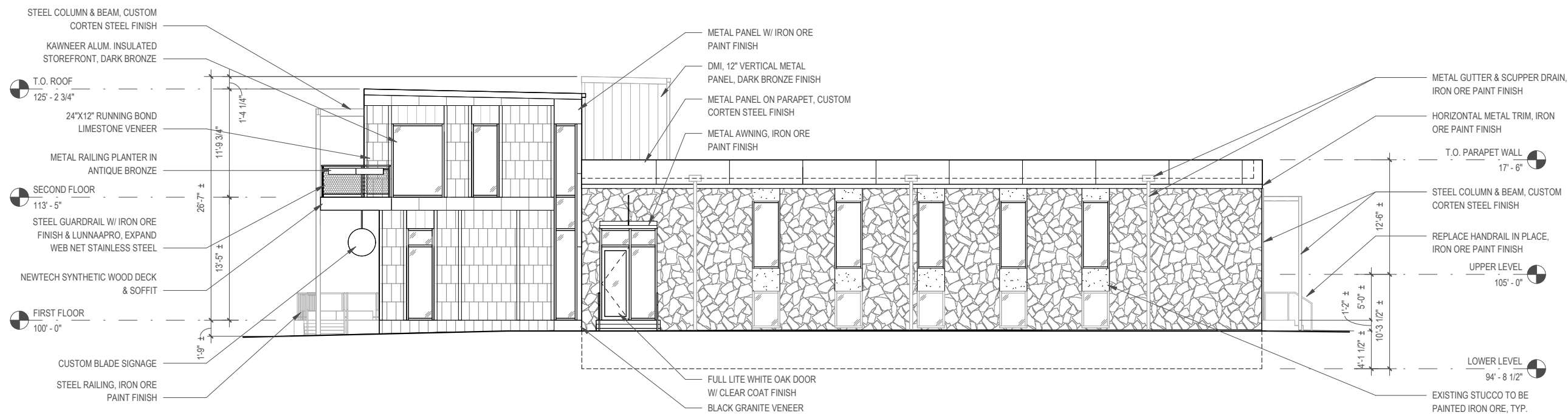
4. METAL PANELS DMI DARK BRONZE



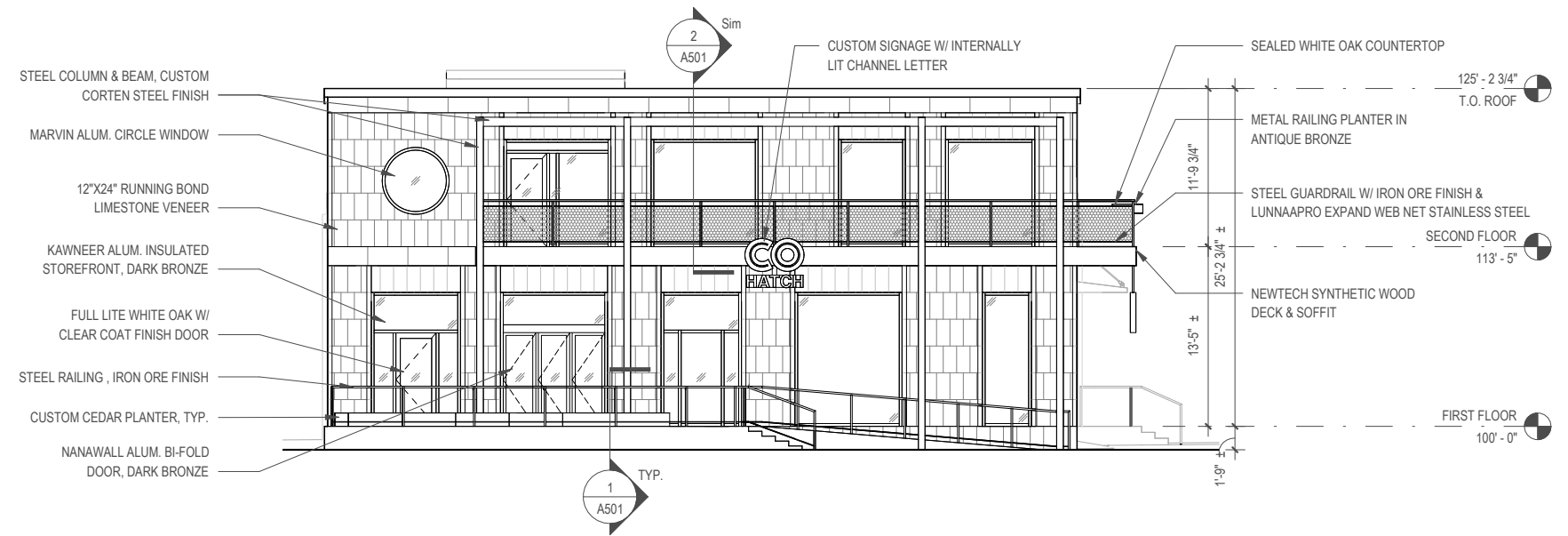
5. WHITE OAK FULL-LITE DOOR WITH CLEAR COAT FINISH



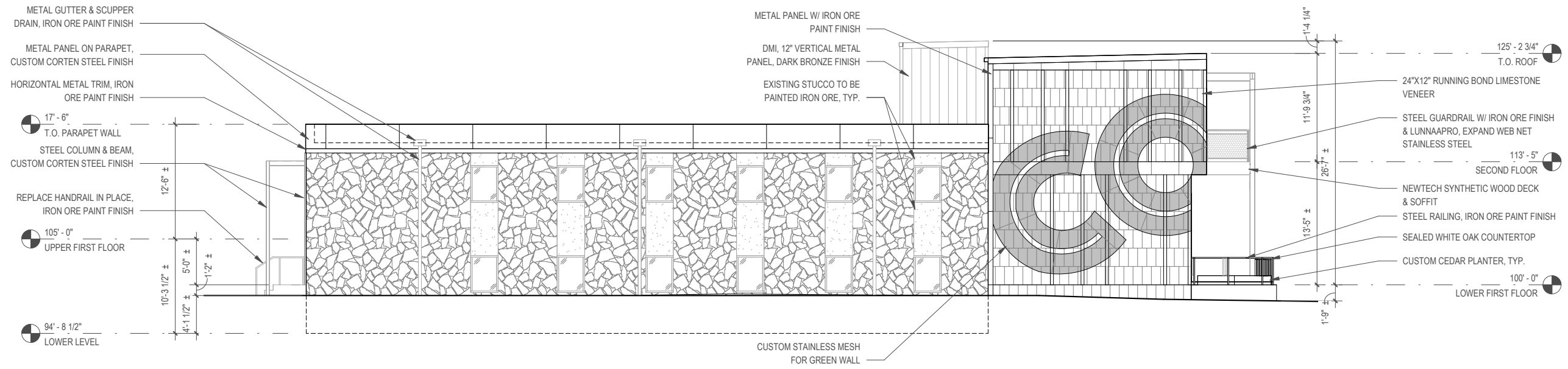
6. PAINTED STUCCO IRON ORE SW 7069



WEST ELEVATION



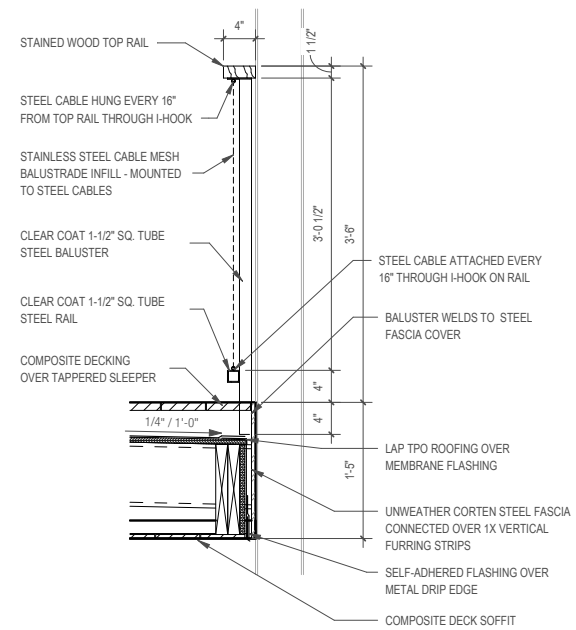
NORTH ELEVATION



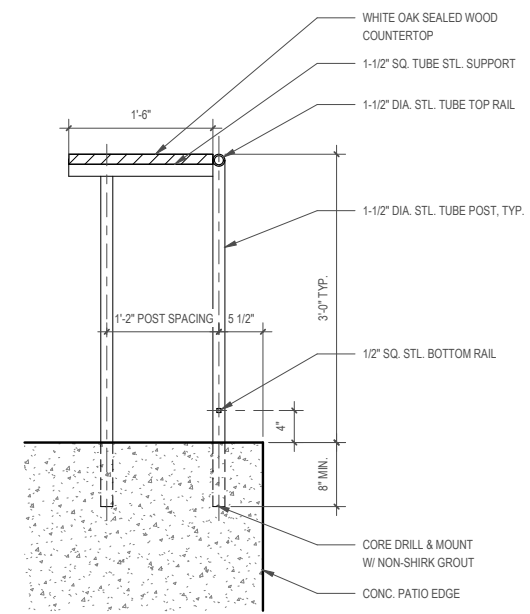
EAST ELEVATION



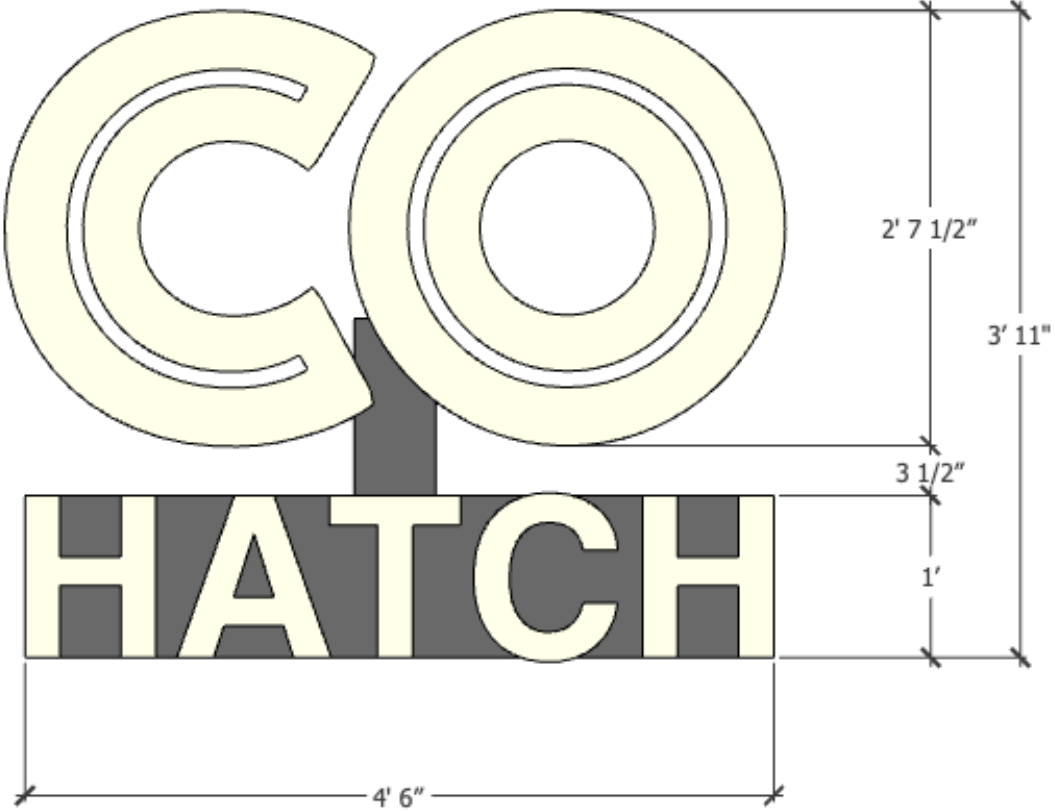
SOUTH ELEVATION



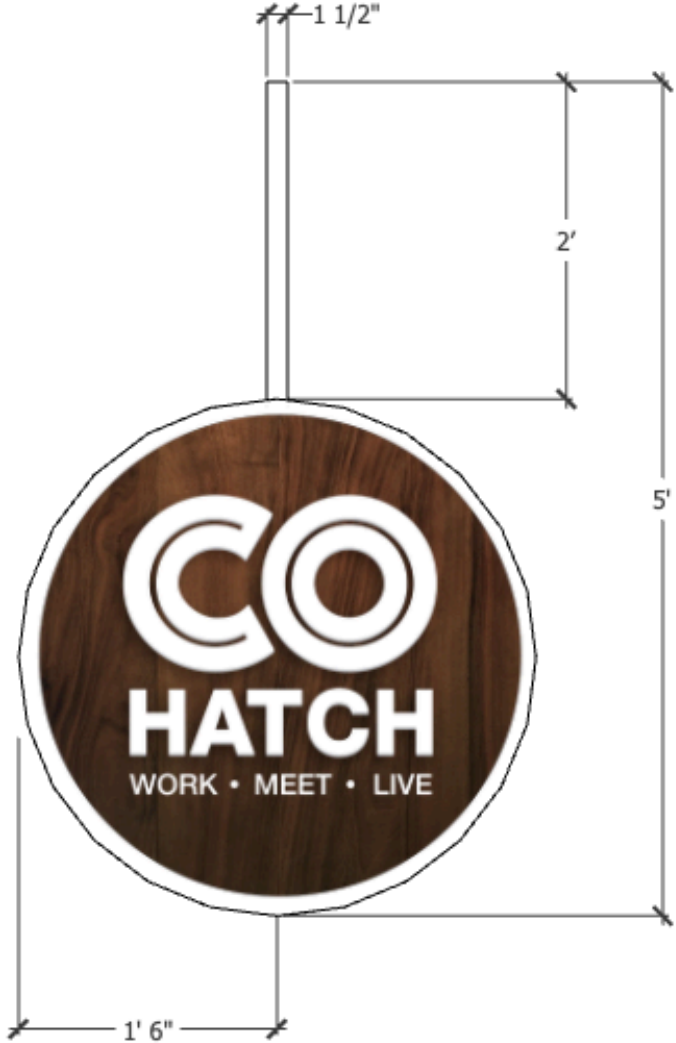
BALCONY RAILING SECTION



PATIO RAILING SECTION



Custom Internally Lit Chanel
Letter Signage



Custom Blade Signage