


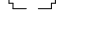


- LEGEND**
-  DECORATIVE PAVING
 -  LANDSCAPE WALLS/SEATINGS
 -  GRASS/LANDSCAPE AREA
 -  FUTURE COLONNADE

ST. CHARLES PREPARATORY SCHOOL

PLAZA
 2010 E BROAD STREET,
 BEXLEY, OH 43209

ROBERT CORNA Architects
 PHONE: (440) 346-7425
 CORNAARCHITECTS@GMAIL.COM

TRIAD
 172 E. STATE ST., SUITE 600
 COLUMBUS, OH 43215
 PHONE: (614) 942-1050
 MAIN@TRIADARCHITECTS.COM

ARCHITECTURAL REVIEW BOARD
 02/20/2023

REVISIONS:

#	DATE	DESCRIPTION

DRAWN BY: MA
 CHECKED BY: BTf
 PROJECT NUMBER: 2305a - PLAZA

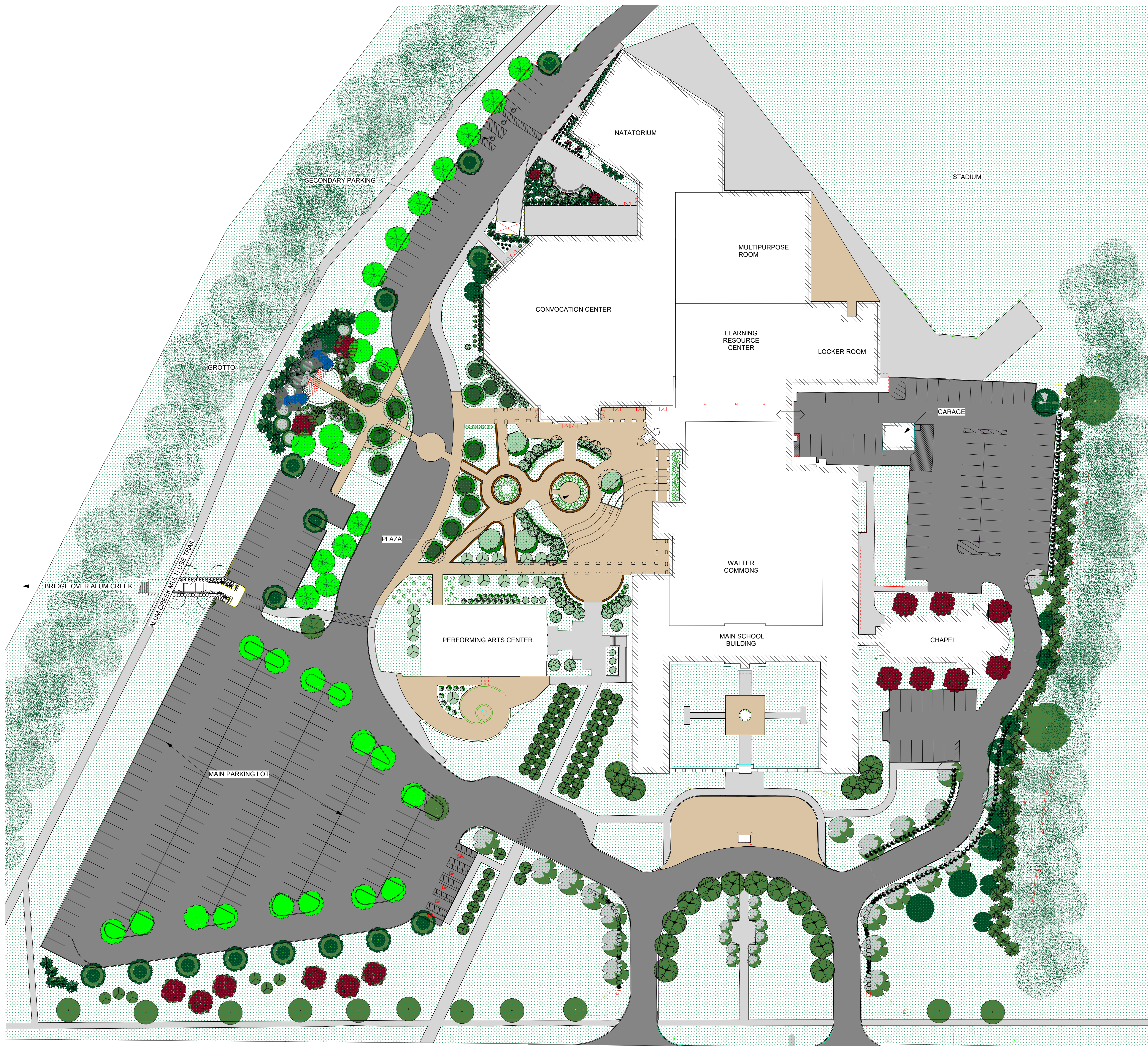
ARB-100
 ARCHITECTURAL SITE PLAN

COPYRIGHT TRIAD ARCHITECTS LTD. 2021

2/20/2023 9:55:27 AM

2305a - PLAZA

C:\Users\muradhas\Documents\2305a - St. Charles-Plaza_Central_R20_muradhas\F4LY.rvt



EAST BROAD STREET



OVERALL SITE PLAN
1" = 40'-0" ①

ST. CHARLES PREPARATORY SCHOOL

PLAZA

2010 E BROAD STREET,
BEXLEY, OH 43209



172 E. STATE ST, SUITE 600
COLUMBUS, OH 43215
PHONE: (614) 942-1050
MAIN@TRIADARCHITECTS.COM

ARCHITECTURAL REVIEW BOARD

02/20/2023

REVISIONS:

#	DATE	DESCRIPTION
---	------	-------------

DRAWN BY: Author
CHECKED BY: Checker
PROJECT NUMBER:

ARB-101
OVERALL CAMPUS SITE PLAN

COPYRIGHT TRIAD ARCHITECTS LTD. 2021

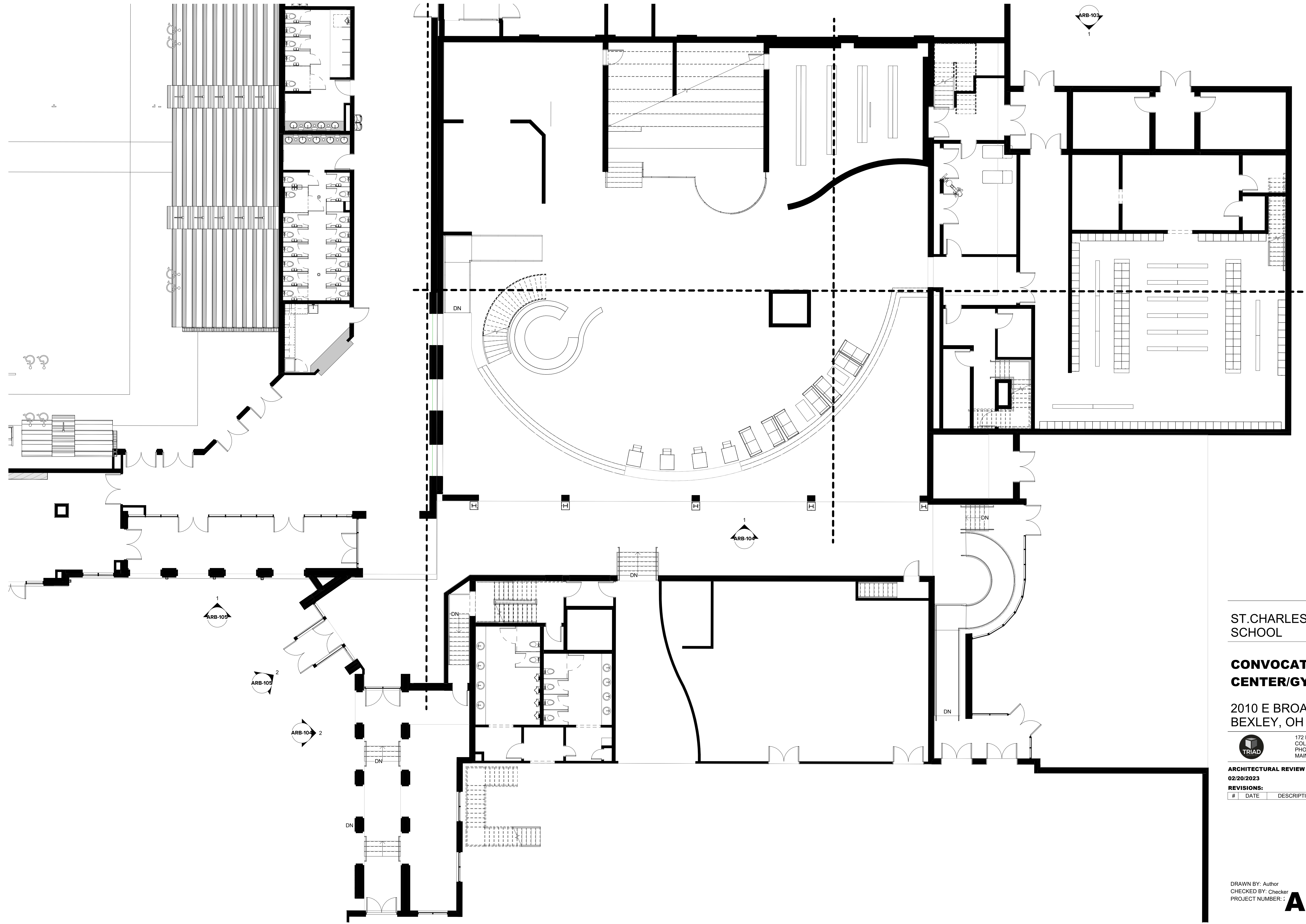
2/20/2023 9:55:53 AM

2305a - PLAZA

C:\Users\murdadhas\Documents\2305a - St. Charles-Plaza_Central_R20_murdadhas\F4LY.TXT

2/20/2023 9:55:53 AM

C:\Users\Casey Bymes\Documents\2022\1215 - 2101 - St. Charles Convocation_Tower Version_cbymes\NXF7.rvt



ST. CHARLES PREPARATORY SCHOOL

CONVOCATION CENTER/GYMNASIUM

2010 E BROAD STREET, BEXLEY, OH 43209



172 E. STATE ST., SUITE 600
COLUMBUS, OH 43215
PHONE: (614) 942-1050
MAIN@TRIADARCHITECTS.COM

ARCHITECTURAL REVIEW BOARD
02/20/2023

REVISIONS:

#	DATE	DESCRIPTION

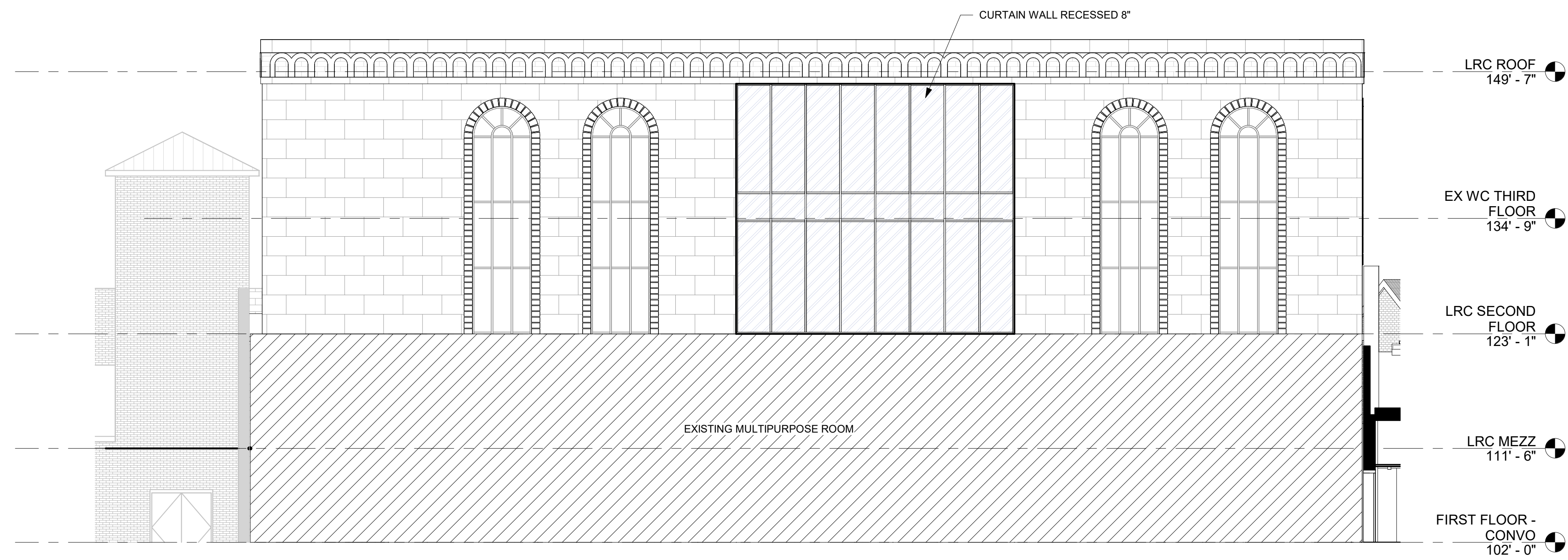
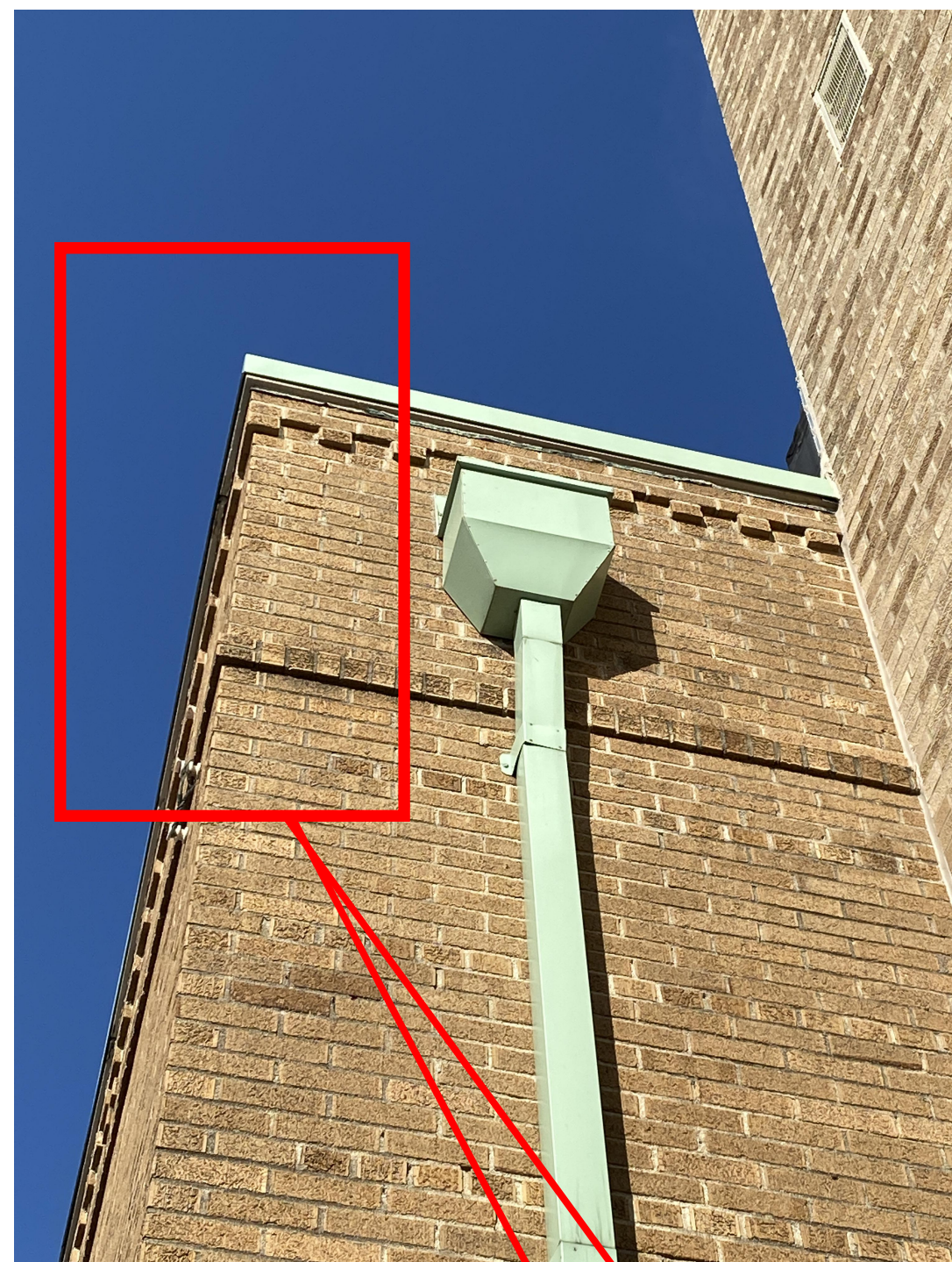
DRAWN BY: Author
CHECKED BY: Checker
PROJECT NUMBER: 2

ARB-102
OVERALL FLOOR PLAN

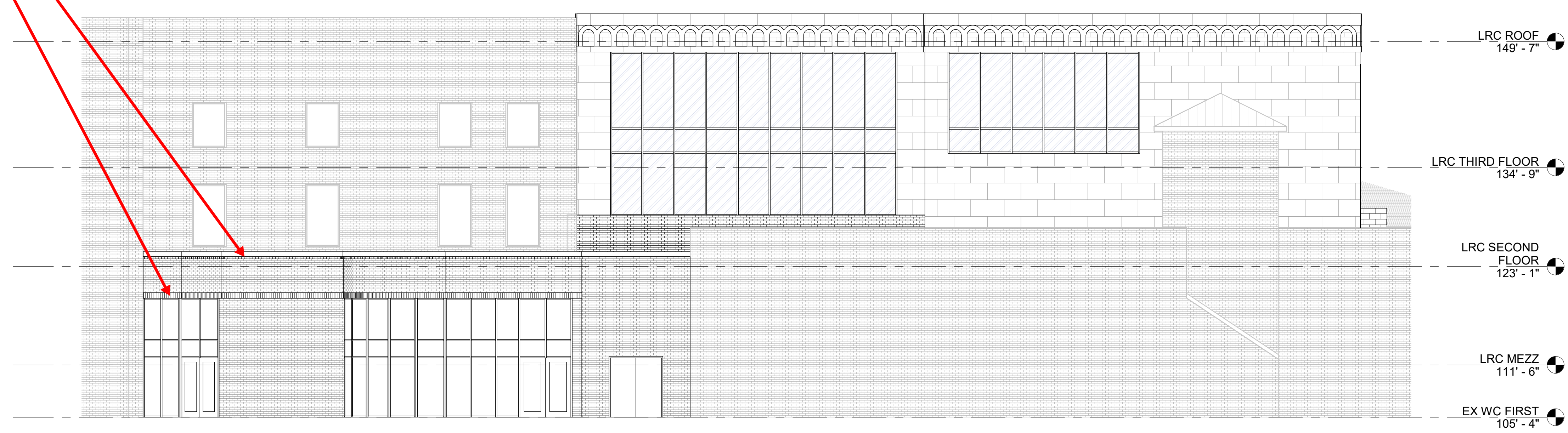
COPYRIGHT TRIAD ARCHITECTS LTD. 2022

2/20/2023 1:47:26 PM

2306a - CONVOCATION CENTER/GYMNASIUM



NORTH ELEVATION
1/8" = 1'-0" ①



EAST ELEVATION
1/8" = 1'-0" ②

ST. CHARLES PREPARATORY SCHOOL

CONVOCATION CENTER/GYMNASIUM

2010 E BROAD STREET, BEXLEY, OH 43209

172 E. STATE ST., SUITE 600
COLUMBUS, OH 43215
PHONE: (614) 942-1050
MAIN@TRIADARCHITECTS.COM

ARCHITECTURAL REVIEW BOARD
02/20/2023

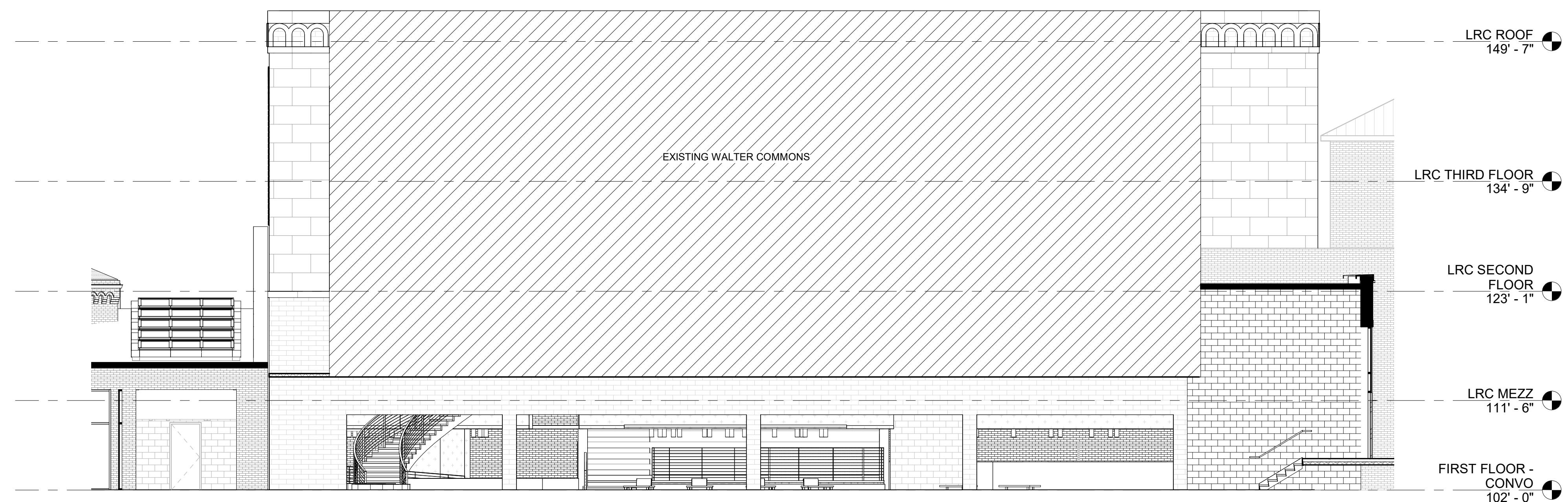
REVISIONS:

#	DATE	DESCRIPTION

DRAWN BY: Author
CHECKED BY: Checker
PROJECT NUMBER: **ARB-103**
EXTERIOR ELEVATIONS



WEST ELEVATION ②
1/8" = 1'-0"



SOUTH ELEVATION ①
1/8" = 1'-0"

ST. CHARLES PREPARATORY SCHOOL

CONVOCATION CENTER/GYMNASIUM

2010 E BROAD STREET,
BEXLEY, OH 43209



172 E. STATE ST. SUITE 600
COLUMBUS, OH 43215
PHONE: (614) 942-1050
MAIN@TRIADARCHITECTS.COM

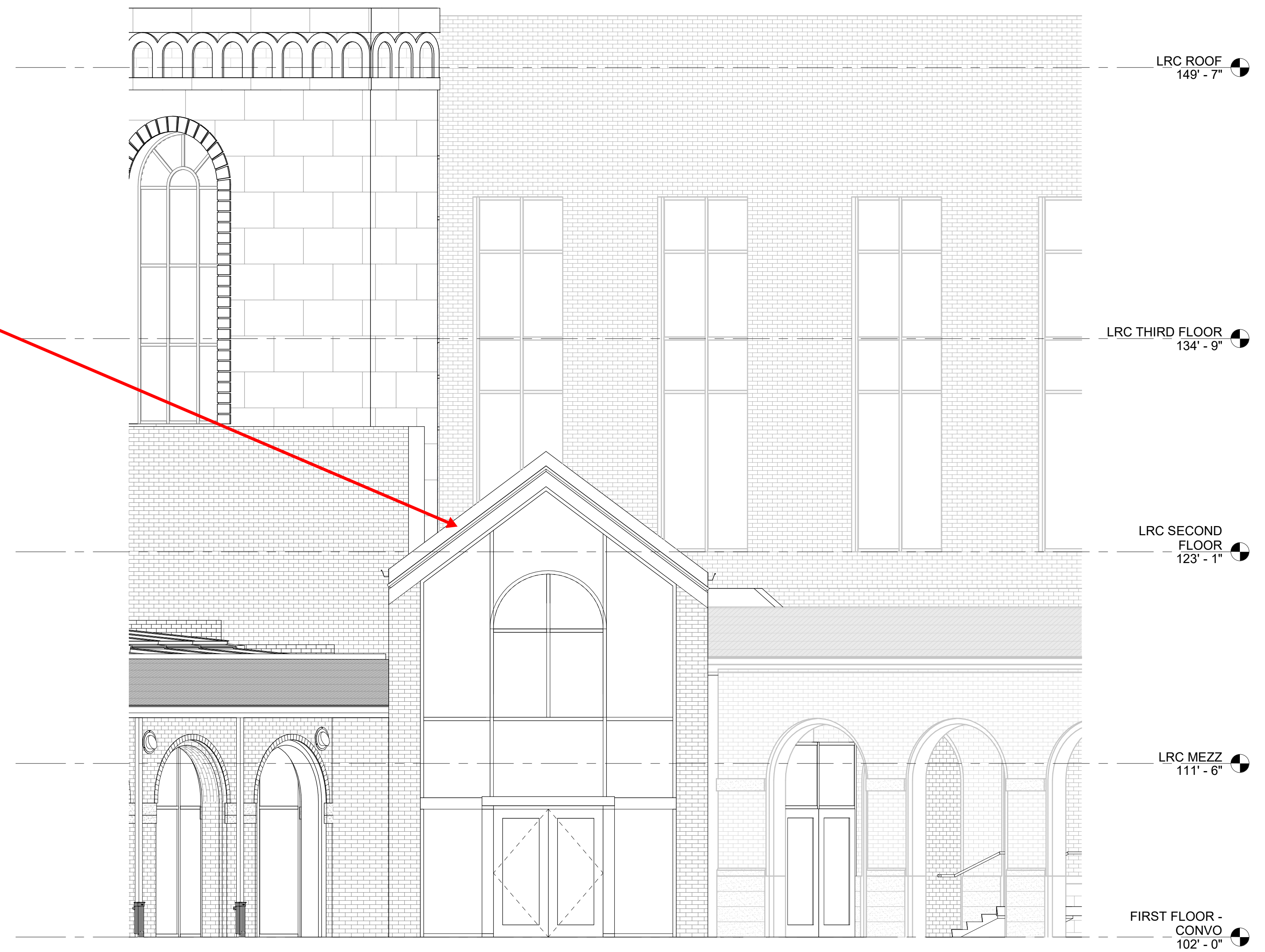
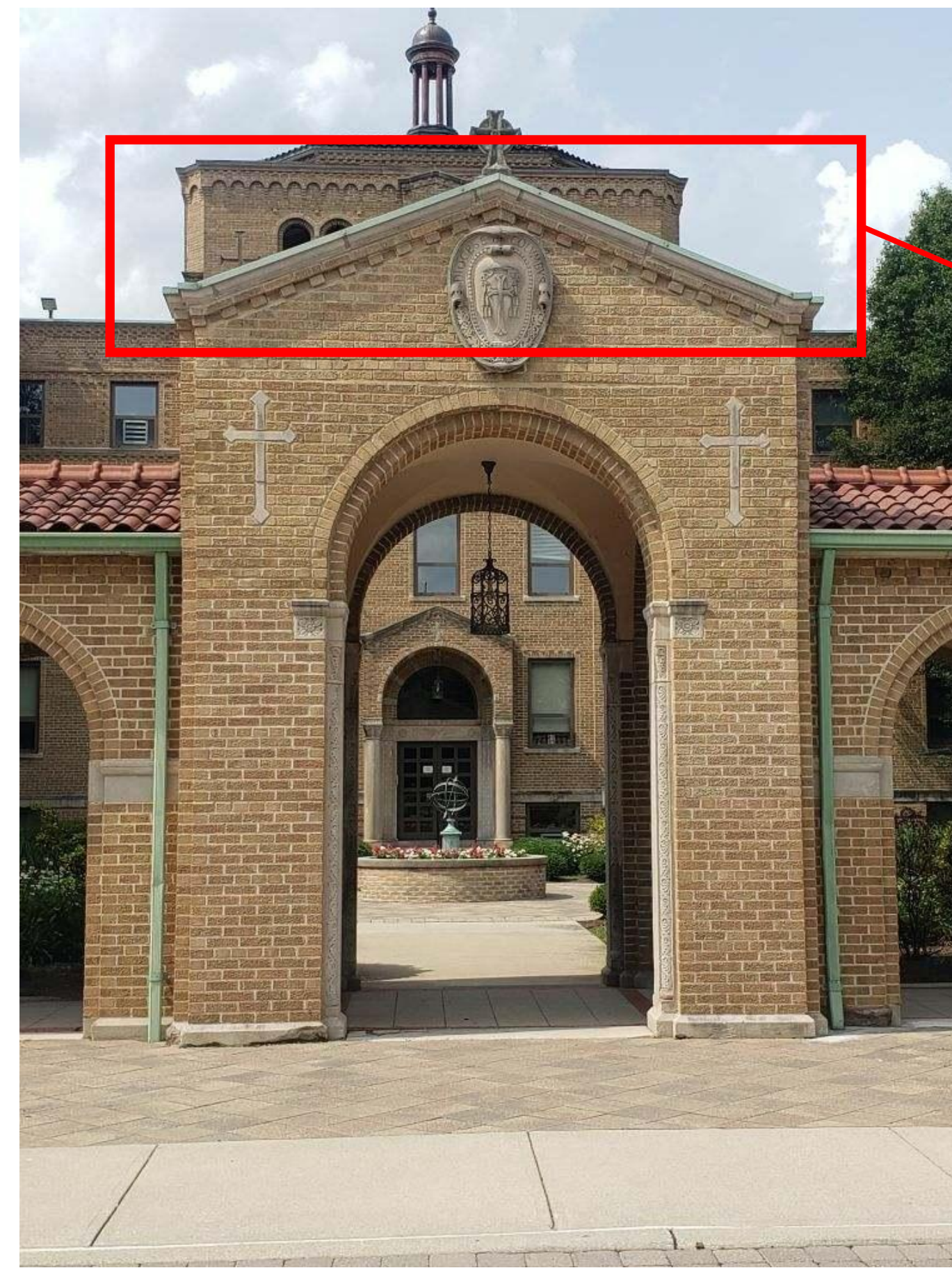
ARCHITECTURAL REVIEW BOARD
02/20/2023

REVISIONS:

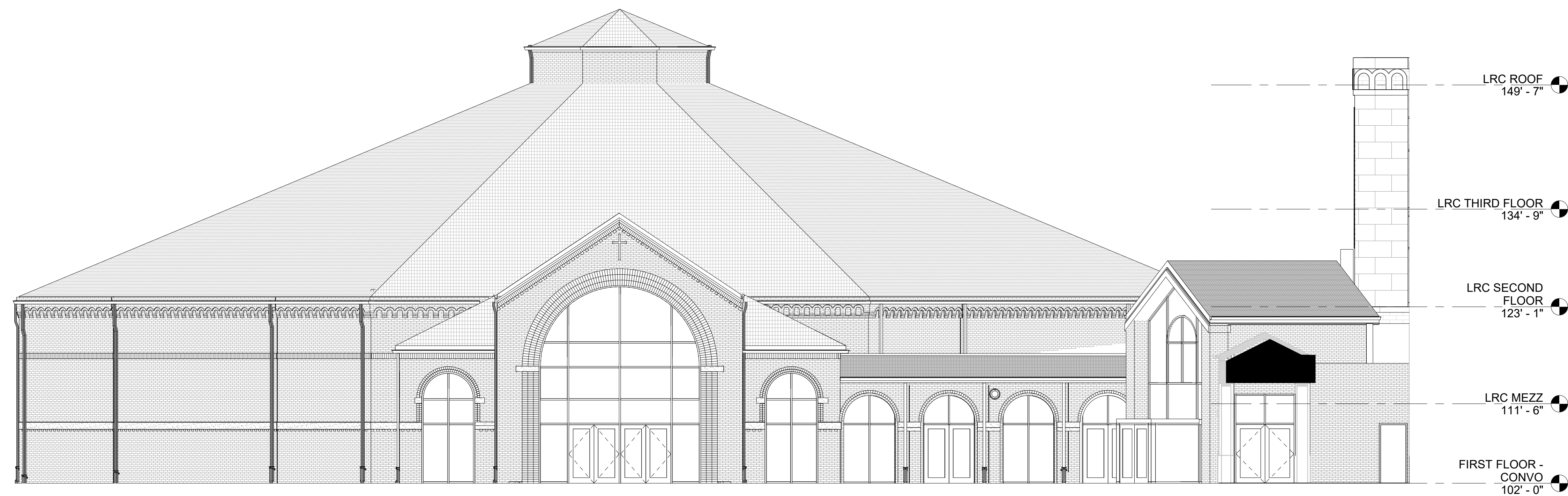
#	DATE	DESCRIPTION

DRAWN BY: Author
CHECKED BY: Checker
PROJECT NUMBER: 2

ARB-104
EXTERIOR ELEVATIONS



LRC ENTRANCE ELEVATION 2
1/4" = 1'-0"



LRC ENTRANCE SOUTH ELEVATION 1
1/8" = 1'-0"

ST. CHARLES PREPARATORY SCHOOL

CONVOCATION CENTER/GYMNASIUM

2010 E BROAD STREET,
BEXLEY, OH 43209



172 E. STATE ST., SUITE 600
COLUMBUS, OH 43215
PHONE: (614) 942-1050
MAIN@TRIADARCHITECTS.COM

ARCHITECTURAL REVIEW BOARD
02/20/2023

REVISIONS:

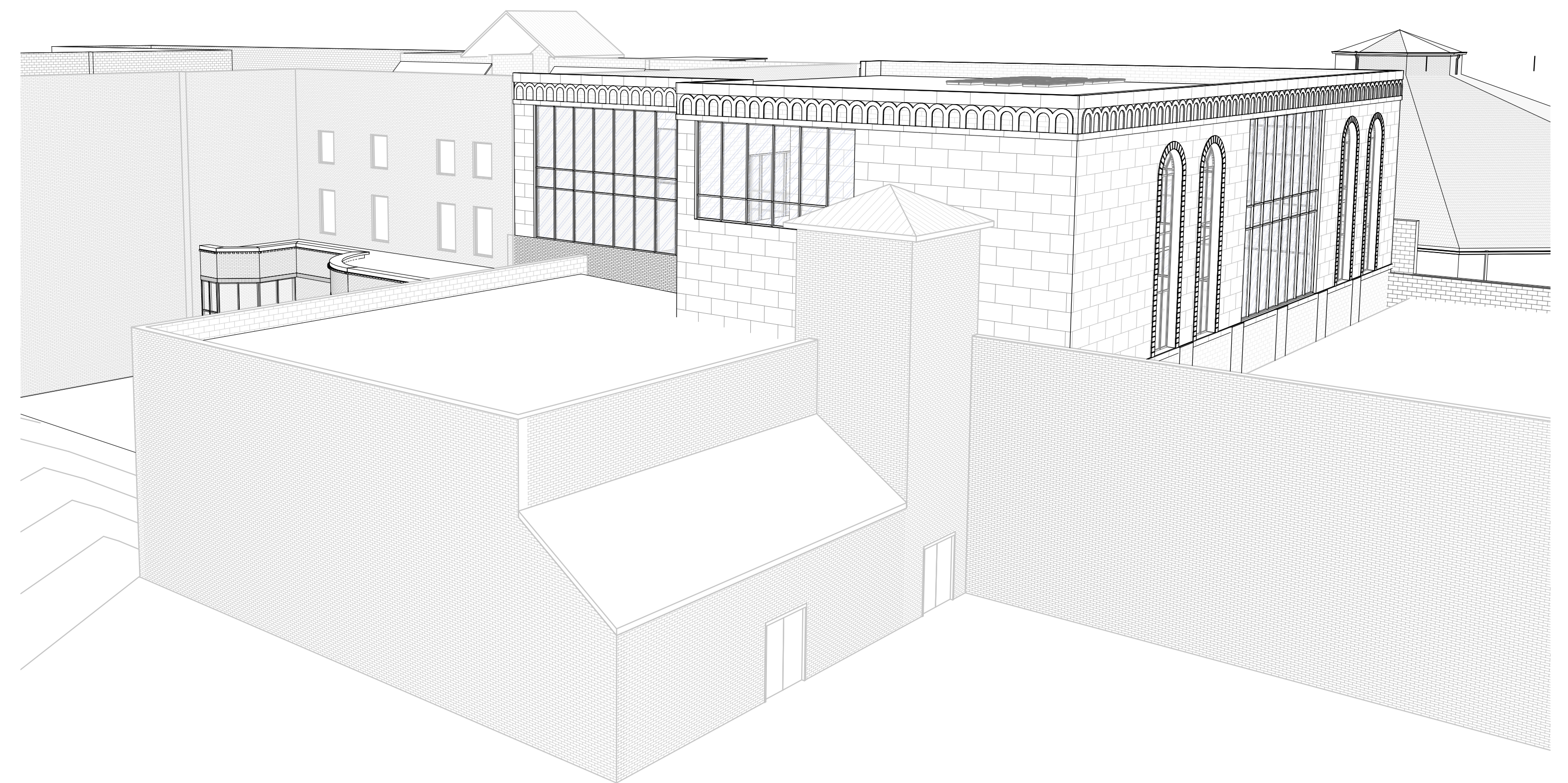
#	DATE	DESCRIPTION

DRAWN BY: Author
CHECKED BY: Checker
PROJECT NUMBER: 2

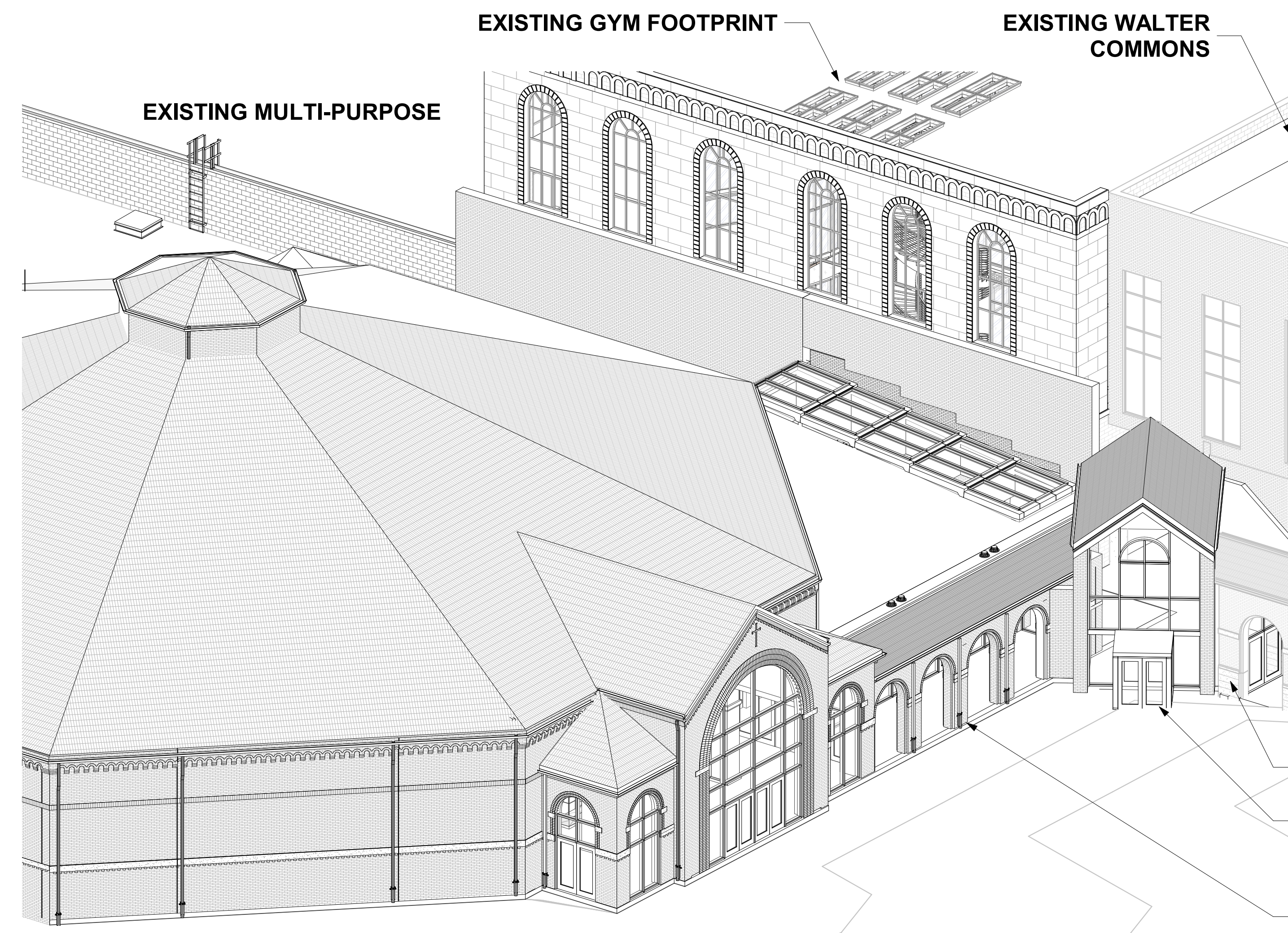
ARB-105
EXTERIOR ELEVATIONS



GROUND LEVEL PERSPECTIVE 2



NORTHEAST PERSPECTIVE 3



BIRDS EYE PERSPECTIVE 1



EAST ENTRANCE PERSPECTIVE 4

ST. CHARLES PREPARATORY SCHOOL

CONVOCATION CENTER/GYMNASIUM

2010 E BROAD STREET, BEXLEY, OH 43209



172 E. STATE ST., SUITE 600
COLUMBUS, OH 43215
PHONE: (614) 942-1050
MAIN@TRIADARCHITECTS.COM

ARCHITECTURAL REVIEW BOARD

02/20/2023

REVISIONS:

#	DATE	DESCRIPTION

DRAWN BY: Author
CHECKED BY: Checker
PROJECT NUMBER: 2

ARB-106
PERSPECTIVES