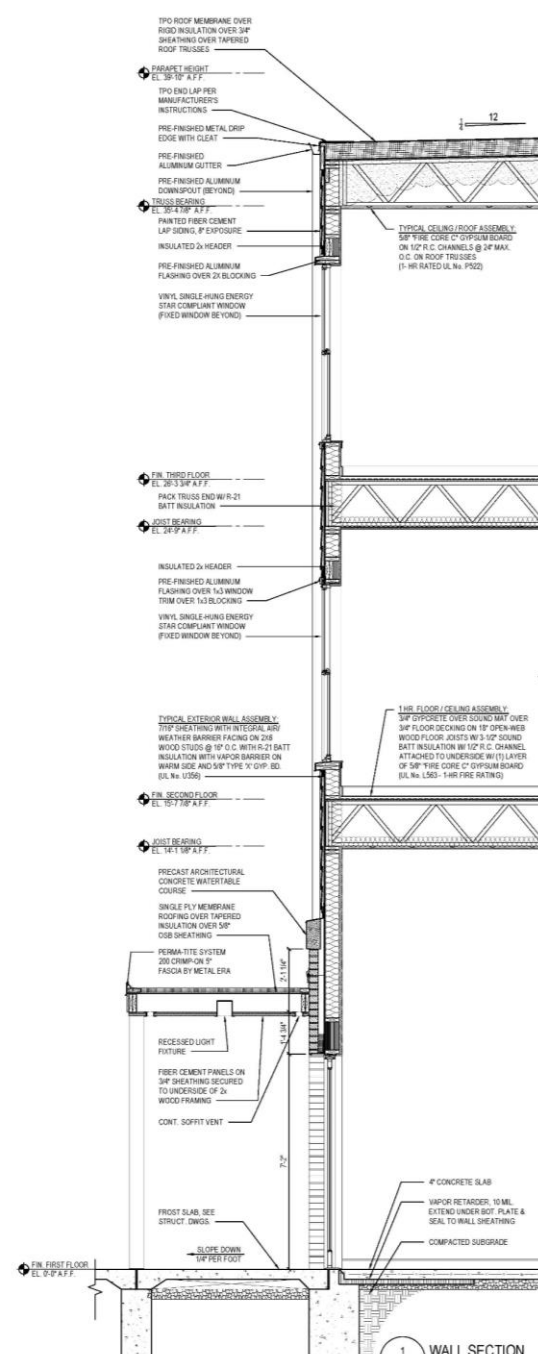
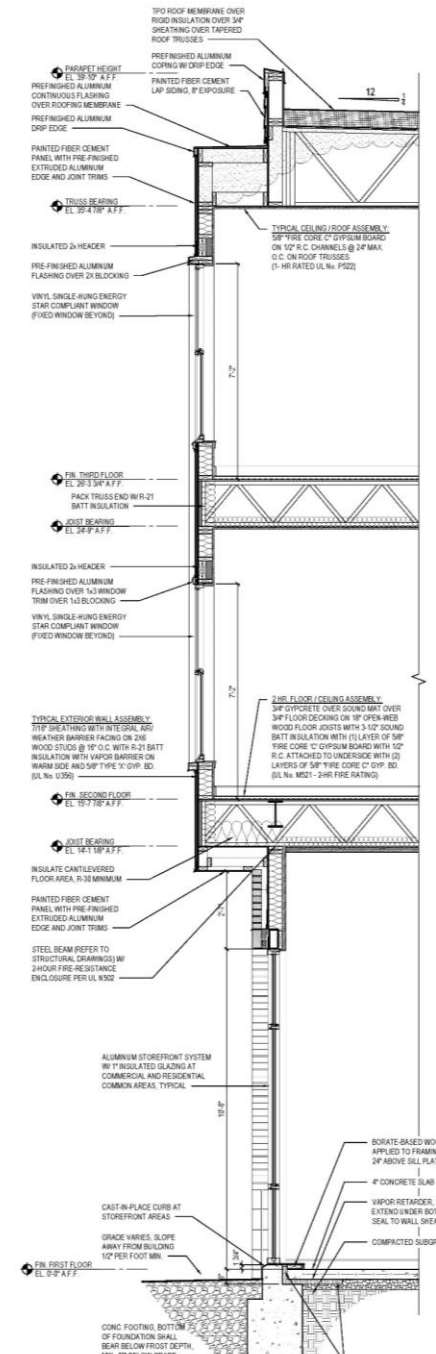


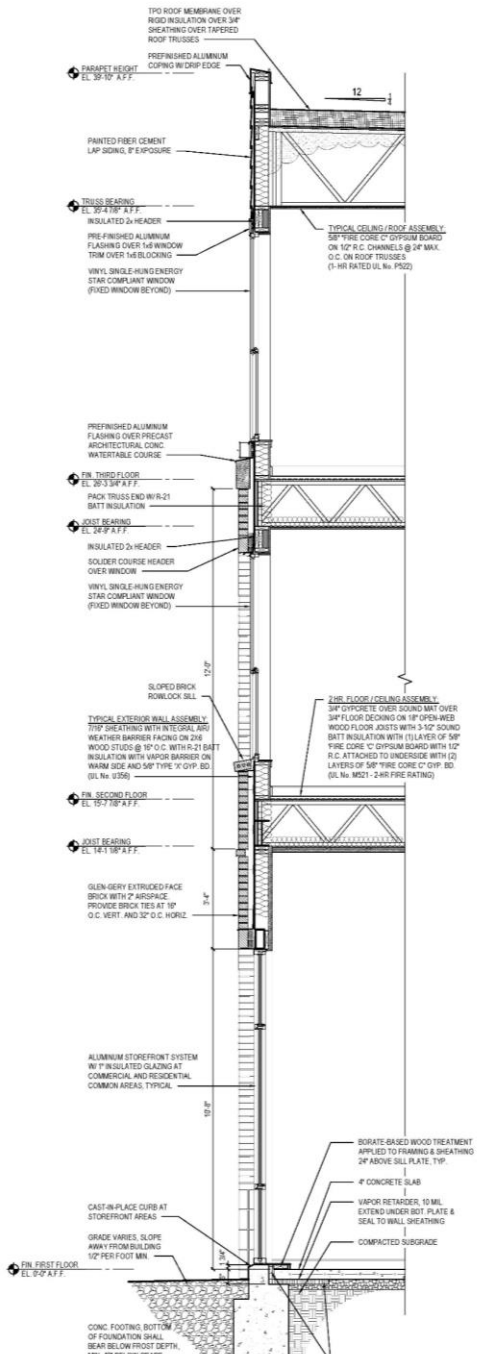
A: Section at Front Entry



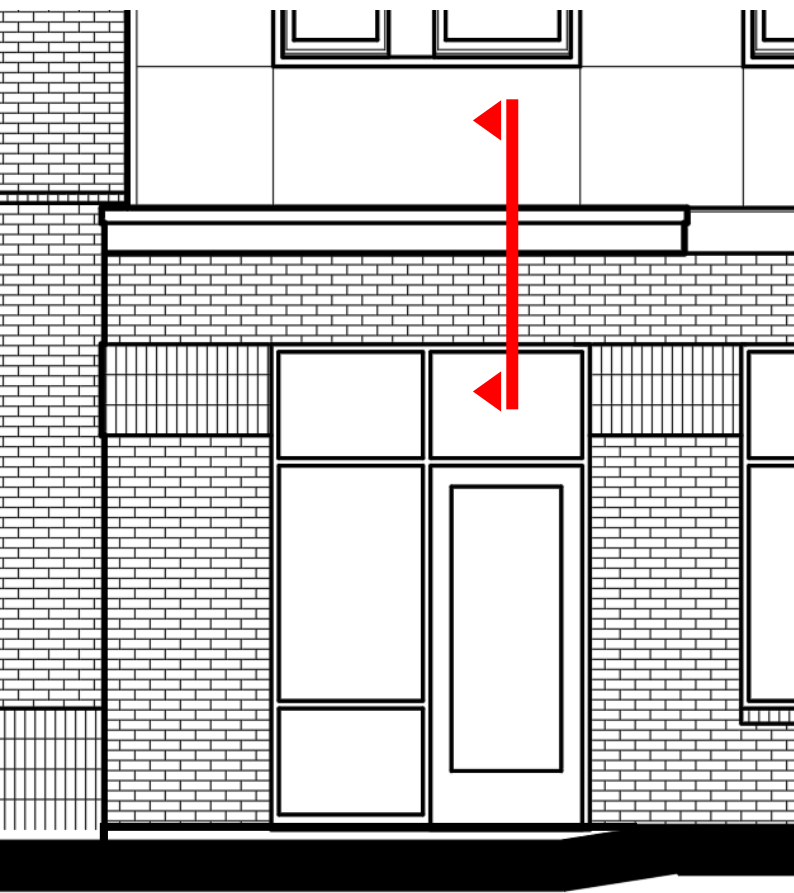
B: Section at Rear Entry



C: Section at Projecting Bay



D: Section at West Wall



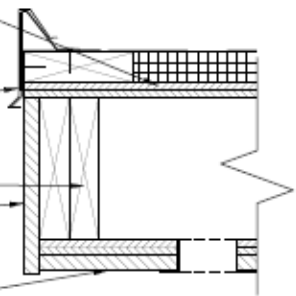
75 MIL TPO ROOFING MEMBRANE ON
TAPERED INSUL. ON SPECIFIED
SHEATHING ON 2x WOOD FRAMING

PREFINISHED PERMA-TITE
SYSTEM 200 CRIMP-ON 5"
FASCIA BY METAL ERA

REFER TO STRUCT. DWGS
FOR CANOPY FRAMING

1X8 FIBER CEMENT BOARD

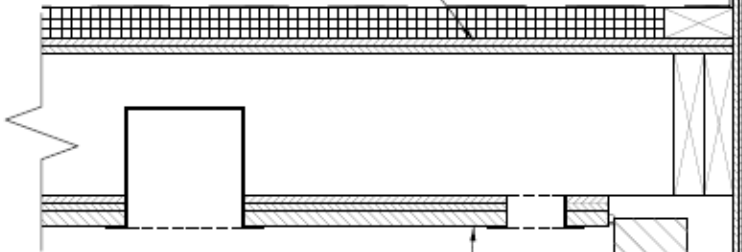
FIBER CEMENT PANELS
WITH 3" VENTS SECURED
TO 2x WOOD FRAMING



METAL FLASHING AND
TERMINATION BAR SEALED TO
BE AIR AND WATER TIGHT

CONT. FLASHING

ROOF MEMBRANE TO WRAP
UP AND UNDER FLASHING



CEMENT BD. OVER SPECIFIED
SHEATHING ON 2x8 WD STUDS

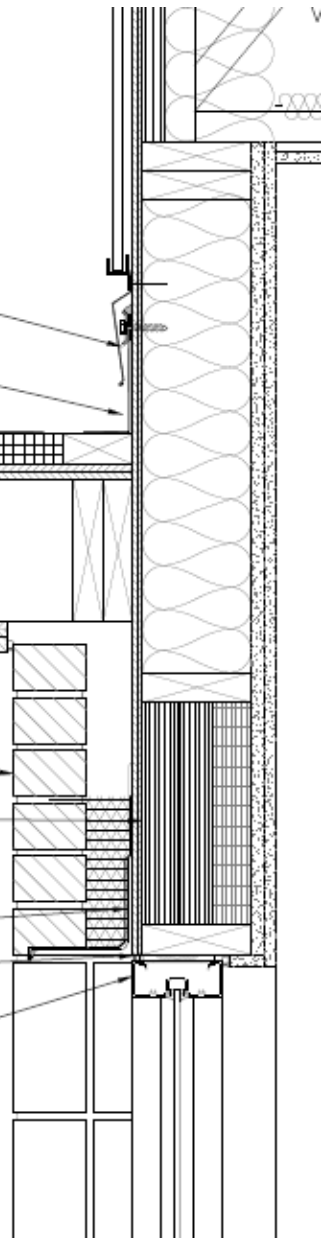
MODULAR BRICK

INSULATED HEADER REFER TO
STRUCTURAL DRAWINGS

STEEL ANGLE W/ THRU WALL
FLASHING W/ 1/4" DRIP MIN. REFER
TO STRUCTURAL DRAWINGS FOR
STEEL ANGLE SIZING.

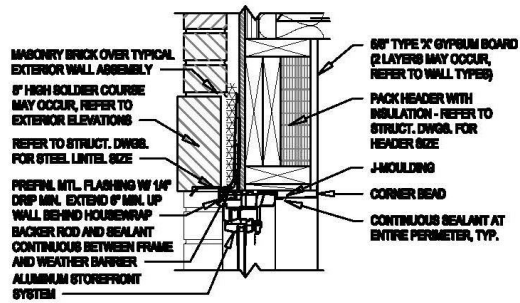
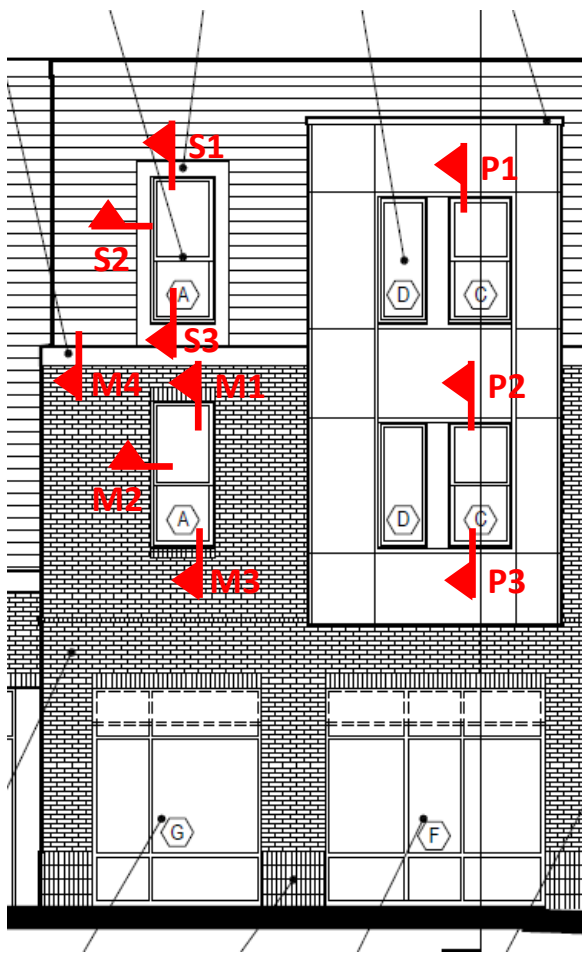
BACKER ROD AND SEALANT

ALUMINUM STOREFRONT WINDOW,
FLANGES SET IN SEALANT, SEE
WINDOW SCHEDULE

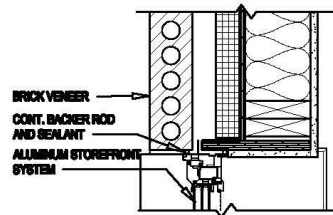


4 FRONT ENTRY CANOPY
A7.25

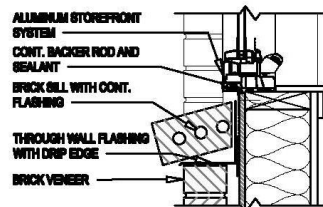
Front entry/canopy details



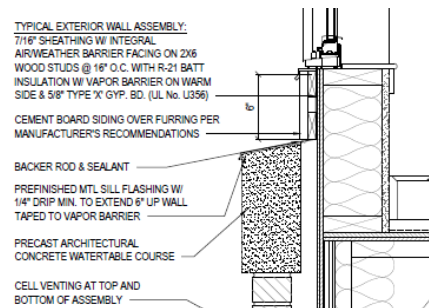
M1 Masonry Jamb



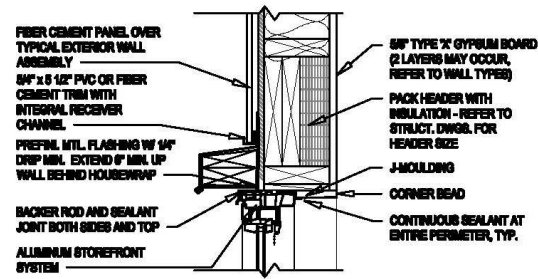
M2 Masonry Jamb



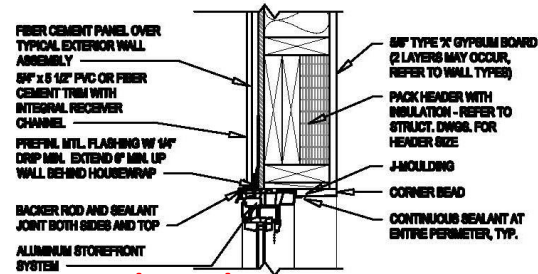
M3 Masonry Sill



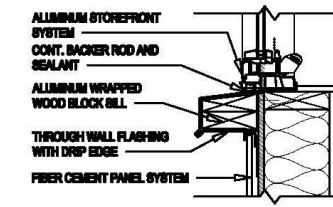
M4 Water Table course



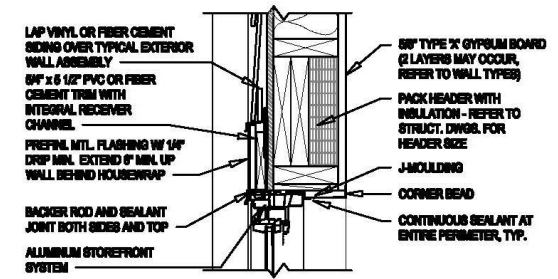
P1 Panel Head-Type A



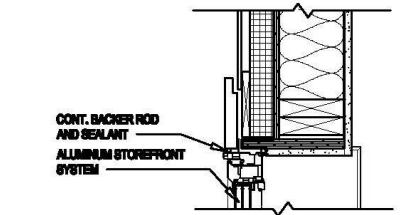
P2 Panel Head-Type B



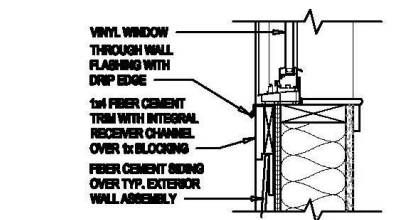
P3 Panel Sill



S1 Siding Jamb



S2 Siding Jamb



S3 Siding Sill