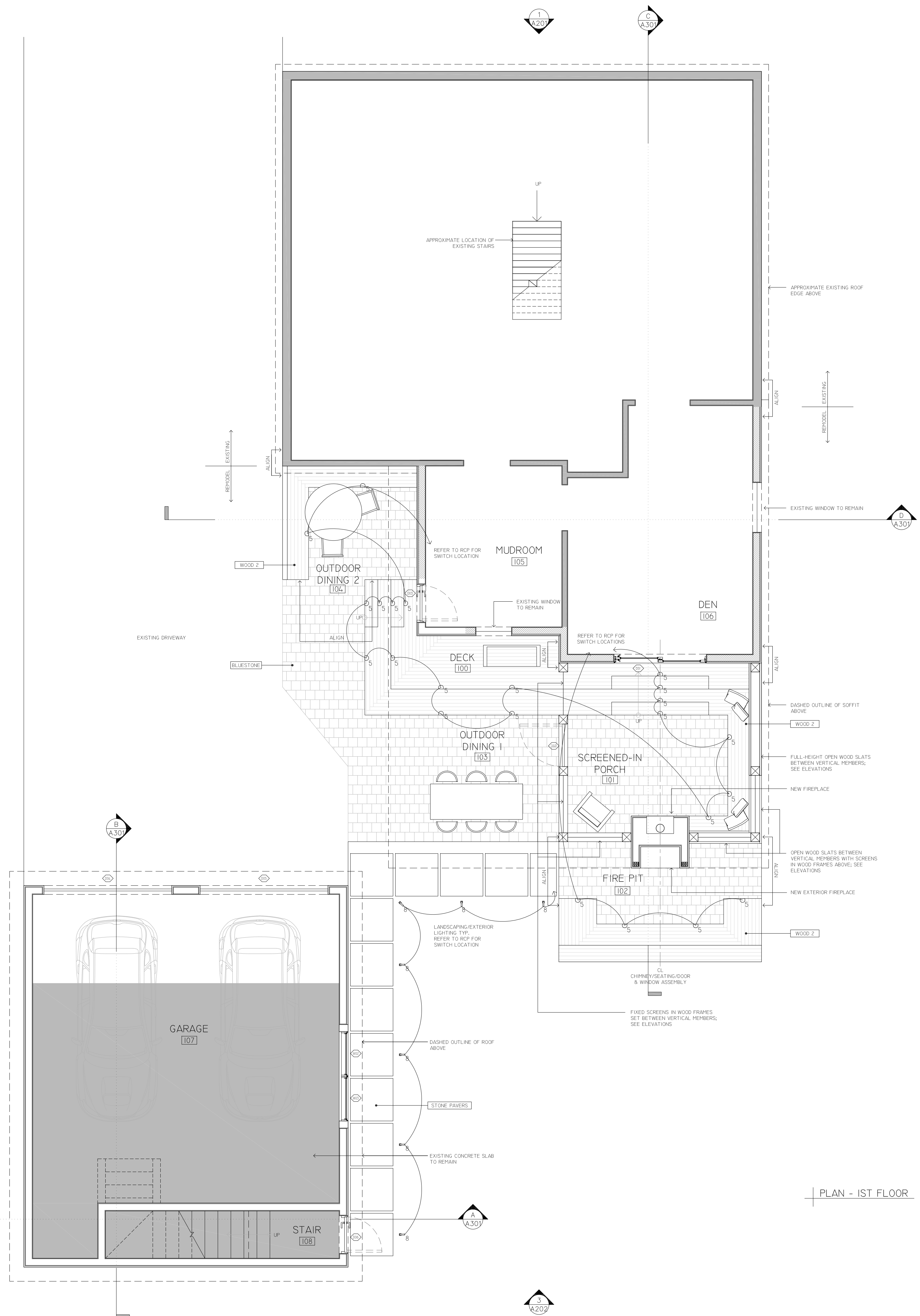


**MATERIAL SPECIFICATIONS:**

**EXTERIOR:**  
WOOD 1: VERTICAL, TONGUE AND GROOVE, 1/4" CEDAR WITH OPALQUE STAIN  
WOOD 2: HORIZONTAL, 1/4" IPE  
WOOD 3: HORIZONTAL, TONGUE AND GROOVE, 1/4" CEDAR WITH OPALQUE STAIN  
BRICK 1: SALVAGED BRICK FROM GARAGE DEMOLITION  
BRICK 2: BLACK VITRO PANELS  
ALTERNATE OPTION WOOD 1  
BLEUESTONE: 8"x8" PATIO PAVERS, HONED OR GAUGED FINISH  
STONE PAVERS: 36"x36" BLEUESTONE, HONED OR GAUGED FINISH  
METAL 1: CONTINUOUS FLASHING WITH NO HORIZONTAL JOINTS  
SOFFIT: 1/4" CEDAR STAINED WITH SPINKINS COLOR TBO  
DOORS: ALUMINUM CLAD, FINISH TBO  
WINDOWS: ALUMINUM CLAD, FINISH TBO  
ROOFING: 60 MIL SINGLE-PLY EPDM BY FIRESTONE OR APPROVED EQUAL  
FIREPLACE INSERT: STUV 40-58

**INTERIOR:**  
FLOOR FINISH 1: TILE TBO  
FLOOR FINISH 2: 4" SELECT GRADE WHITE OAK, LINGEED OIL FINISH  
DRYWALL  
WALLS: SMOOTH LEVEL 4 FINISH ON 1/2" DRYWALL  
CEILING: SMOOTH LEVEL 4 FINISH ON 5/8" GIB  
BATHROOMS: 1/2" DUROCK ON WALLS, 5/8" MOISTURE ROCK ON CEILING AND DUROCK ON AREAS TO BE TILED  
NOTE: DRYWALL RETURNS ON ALL WINDOWS  
WALL TILE: TILE TBO  
COUNTERTOPS: SQUARE EDGE STONE  
GLASS PANELS/SHOWER DOORS: TEMPERED GLASS WITH BEVELED EDGES  
MILKWORK: REFER TO INTERIOR ELEVATIONS FOR DIMENSIONS  
INTERIOR TRIM: 1/4" SQUARE EDGE POPLAR  
DOORS: PAINTED FLUSH BIRCH VENEER, SOLID CORE 1 3/4", HUNG ON CLEAR PINE LAMBS  
PAINT: CWB SHALL BE PRIMED AND PAINTED WITH TWO COATS OF TOP COAT, SHEARWILLIAMS OR APPROVED EQUAL  
HVAC: WALL-MOUNTED SPLIT SYSTEM UNIT IN STUDIO (RM #208), DUCTED SPLIT SYSTEM UNIT IN CLOSET 1 (RM #206)



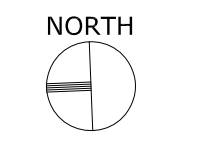
**LEGEND:**

- EXISTING TO REMAIN
- EXISTING FRAMING, NEW CLADDING
- NEW WALLS
- NEW PAVERS
- NEW WOOD BENCH/DECK/STEPS

NOTE: DOORS AND WINDOWS WITH TAGS ARE NEW UN.O. ALL OTHERS ARE EXISTING.

PLAN - 1ST FLOOR

**PRELIMINARY  
NOT FOR CONSTRUCTION  
FOR BIDDING PURPOSES ONLY**



SCALE  
1/4" = 1'-0"

DATE  
10.12.2020

PROJECT NUMBER  
096\_BEXLEY HOUSE

DRAWING TITLE  
PLAN - 1ST FLOOR

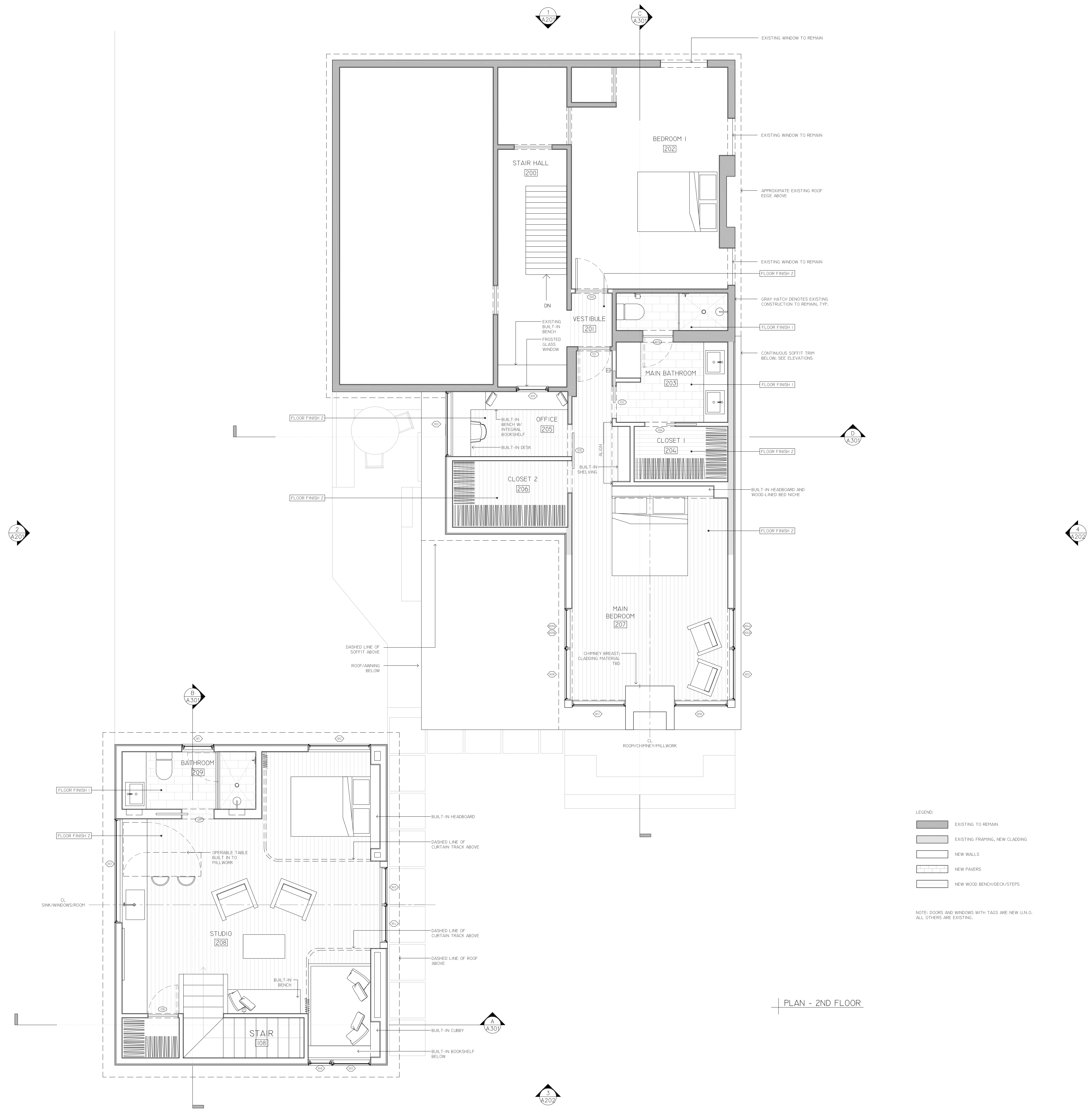
DRAWING NUMBER

A101

**MATERIAL SPECIFICATIONS:**

**EXTERIOR:**  
WOOD 1: VERTICAL, TONGUE AND GROOVE, 1X4 CEDAR WITH OPAQUE STAIN  
WOOD 2: HORIZONTAL, 1X6 IPE  
WOOD 3: HORIZONTAL, TONGUE AND GROOVE, 1X4 CEDAR WITH OPAQUE STAIN  
BRICK 1: SALVAGED BRICK FROM GARAGE DEMOLITION  
VIRCO 1: BLACK VIRCO PANELS  
ALTERNATE: OPTIK WOOD 1  
BLESTONE: 8"X8" PATIO PAVERS, HONED OR GAUGED FINISH  
STONE PAVERS: 36"X36" BLESTONE, HONED OR GAUGED FINISH  
METAL 1: CONTINUOUS FLASHING WITH NO HORIZONTAL JOINTS  
SOFFIT: 1/4" CEDAR STAINED WITH SHENNS COLOR TBO  
DOORS: ALUMINUM CLAD, FINISH TBO  
WINDOWS: ALUMINUM CLAD, FINISH TBO  
ROOFING: 60 MIL SINGLE-PLY EPDM BY FIRESTONE OR APPROVED EQUAL  
FIREPLACE INSERT: STUV 40-58

**INTERIOR:**  
FLOOR FINISH 1: TILE TBO  
FLOOR FINISH 2: 4" SELECT GRADE WHITE OAK, LINGEED OIL FINISH  
DRYWALL:  
WALLS: SMOOTH LEVEL 4 FINISH ON 1/2" DRYWALL  
CEILING: SMOOTH LEVEL 4 FINISH ON 5/8" GWB  
BATHROOMS: 1/2" DUROCK ON WALLS, 5/8" MOISTURE ROCK ON CEILINGS AND DUROCK ON AREAS TO BE TILED  
NOTE: DRYWALL RETURNS ON ALL WINDOWS  
WALL TILE: TILE TBO  
COUNTERTOPS: SQUARE EDGE STONE  
GLASS PANELS/SHOWER DOORS: TEMPLERED GLASS WITH BEVELED EDGES  
MILLWORK: REFER TO INTERIOR ELEVATIONS FOR DIMENSIONS  
INTERIOR TRIM: 1X4 SQUARE EDGE POPLAR  
DOORS: PAINTED FLUSH BIRCH VENEER, SOLID CORE 1 3/4", HUNG ON CLEAR PINE LAMBS  
PAINT: CWB SHALL BE PRIMED AND PAINTED WITH TWO COATS OF TOP COAT, SHEWNS WILLIAMS OR APPROVED EQUAL  
HVAC: WALL-MOUNTED SPLIT SYSTEM UNIT IN STUDIO (RM #208), DUCTED SPLIT SYSTEM UNIT IN CLOSET 1 (RM #204)



**LEGEND:**

- EXISTING TO REMAIN
- EXISTING FRAMING, NEW CLADDING
- NEW WALLS
- NEW PAVERS
- NEW WOOD BENCH/DECK/STEPS

NOTE: DOORS AND WINDOWS WITH TAGS ARE NEW U.N.O. ALL OTHERS ARE EXISTING.

PLAN - 2ND FLOOR

**PRELIMINARY  
NOT FOR CONSTRUCTION  
FOR BIDDING PURPOSES ONLY**



SCALE  
1/4" = 1'-0"

DATE  
10.12.2020

PROJECT NUMBER  
096\_BEXLEY HOUSE

DRAWING TITLE  
PLAN - 2ND FLOOR

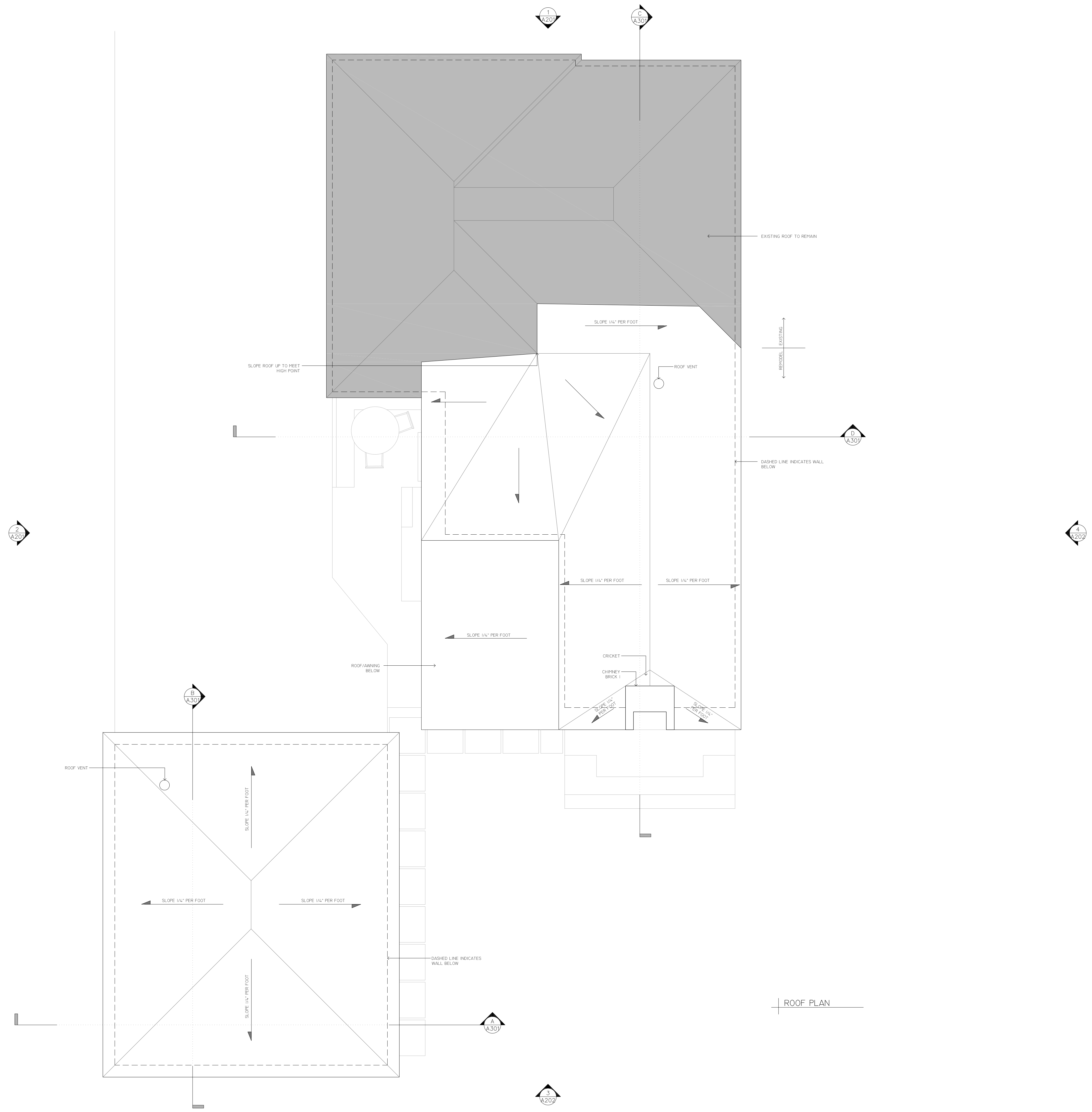
DRAWING NUMBER

A102

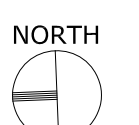
**MATERIAL SPECIFICATIONS:**

**EXTERIOR:**  
WOOD 1: VERTICAL, TONGUE AND GROOVE, 1/4" CEDAR WITH OPAQUE STAIN  
WOOD 2: HORIZONTAL, 1/4" IPE  
WOOD 3: HORIZONTAL, TONGUE AND GROOVE, 1/4" CEDAR WITH OPAQUE STAIN  
BRICK 1: SALVAGED BRICK FROM GARAGE DEMOLITION  
VIRCO 1: BLACK VIRCO PANELS  
ALTERNATE OPTION WOOD 1  
BLEUESTONE: 8"x8" PATIO PAVERS, HONED OR GAUGED FINISH  
STONE PAVERS: 36"x36" BLEUESTONE, HONED OR GAUGED FINISH  
METAL 1: CONTINUOUS FLASHING WITH NO HORIZONTAL JOINTS  
SOFFIT: 1/4" CEDAR STAINED WITH SHIMENS COLOR TID  
DOORS: ALUMINUM CLAD, FINISH TBD  
WINDOWS: ALUMINUM CLAD, FINISH TBD  
ROOFING: 60 MIL SINGLE-PLY EPDM BY FIRESTONE OR APPROVED EQUAL  
FIREPLACE INSERT: STUV 40-58

**INTERIOR:**  
FLOOR FINISH 1: TILE TBD  
FLOOR FINISH 2: 4" SELECT GRADE WHITE OAK, LINSEED OIL FINISH  
DRYWALL  
WALLS: SMOOTH LEVEL 4 FINISH ON 1/2" DRYWALL  
CEILING: SMOOTH LEVEL 4 FINISH ON 5/8" GWB  
BATHROOMS: 1/2" DUROCK ON WALLS, 5/8" MOISTURE ROCK ON CEILINGS AND DUROCK ON AREAS TO BE TILED  
NOTE: DRYWALL RETURNS ON ALL WINDOWS  
WALL TILE: TILE TBD  
COUNTERTOPS: SQUARE EDGE STONE  
GLASS PANELS/SHOWER DOORS: TEMPERED GLASS WITH BEVELED EDGES  
MILLWORK: REFER TO INTERIOR ELEVATIONS FOR DIMENSIONS  
INTERIOR TRIM: 1/4" SQUARE EDGE POPLAR  
DOORS: PAINTED FLUSH BIRCH VENEER, SOLID CORE 1 3/4", HUNG ON CLEAR PINE LAMBS  
PAINT: CWB SHALL BE PRIMED AND PAINTED WITH TWO COATS OF TOP COAT, SHEWEN WILLIAMS OR APPROVED EQUAL  
HVAC: WALL-MOUNTED SPLIT SYSTEM UNIT IN STUDIO (RM #208), DUCTED SPLIT SYSTEM UNIT IN CLOSET 1 (RM #206)



**PRELIMINARY  
NOT FOR CONSTRUCTION  
FOR BIDDING PURPOSES ONLY**



SCALE  
1/4" = 1'-0"

DATE  
10.12.2020

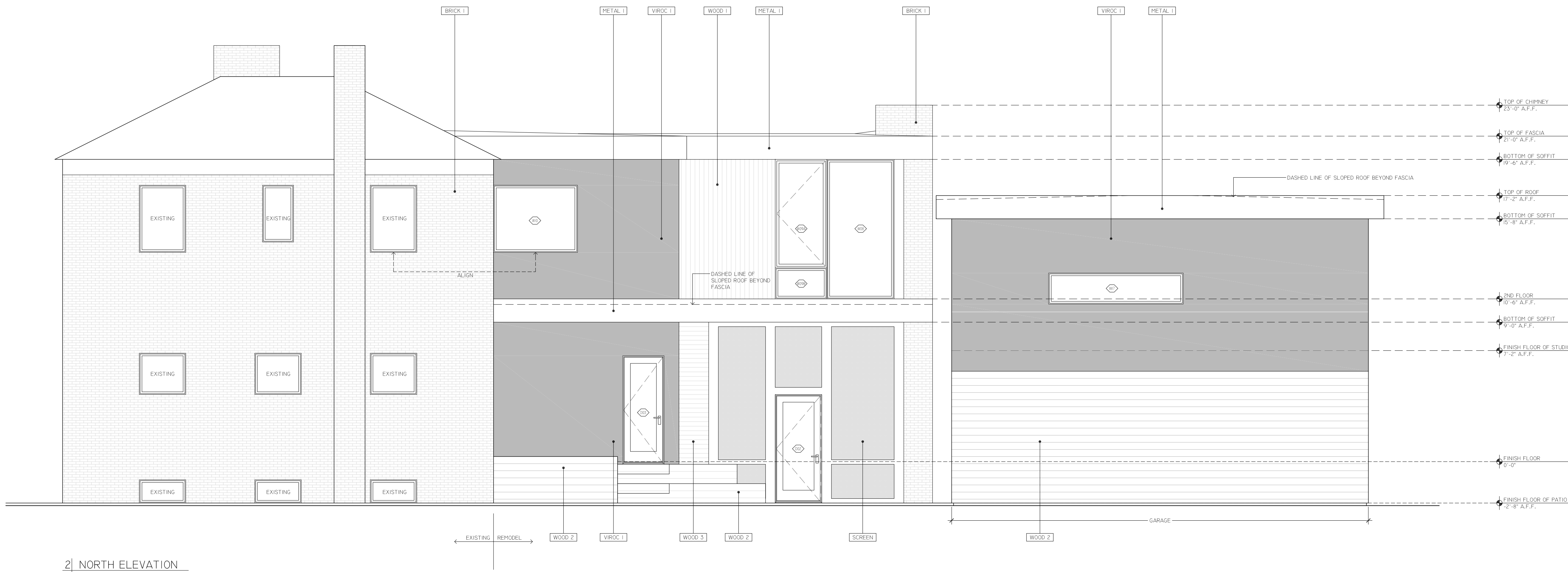
PROJECT NUMBER  
096\_BEXLEY HOUSE

DRAWING TITLE  
ROOF PLAN

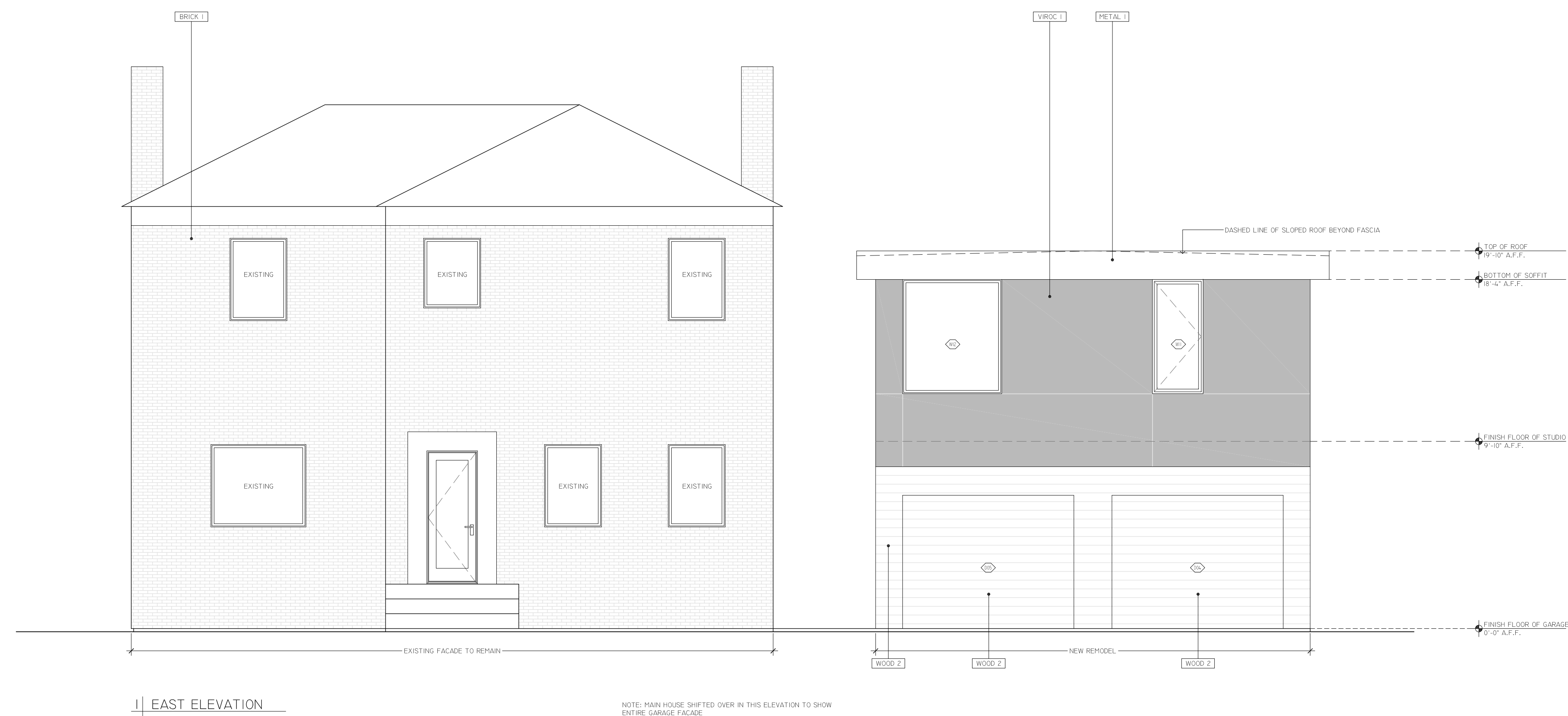
DRAWING NUMBER

**A103**

ROOF PLAN



2 | NORTH ELEVATION



1 | EAST ELEVATION

**PRELIMINARY  
NOT FOR CONSTRUCTION  
FOR BIDDING PURPOSES ONLY**

SCALE  
1/4" = 1'-0"

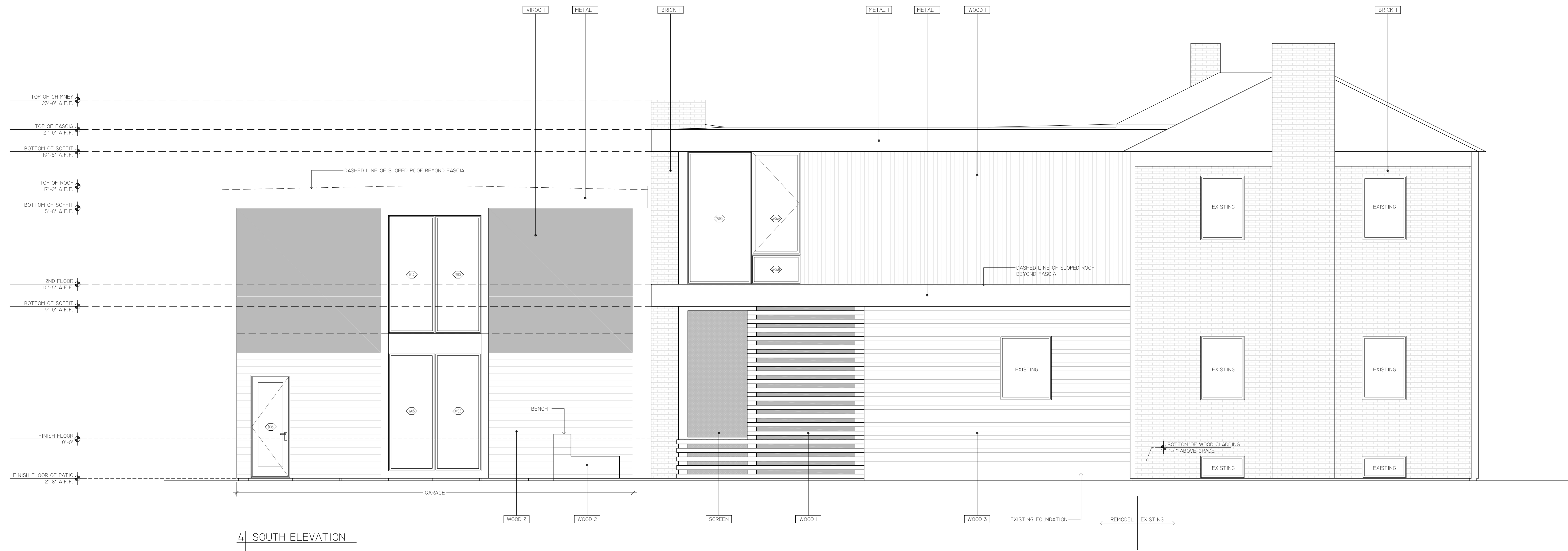
DATE  
10.12.2020

PROJECT NUMBER  
096\_BEXLEY HOUSE

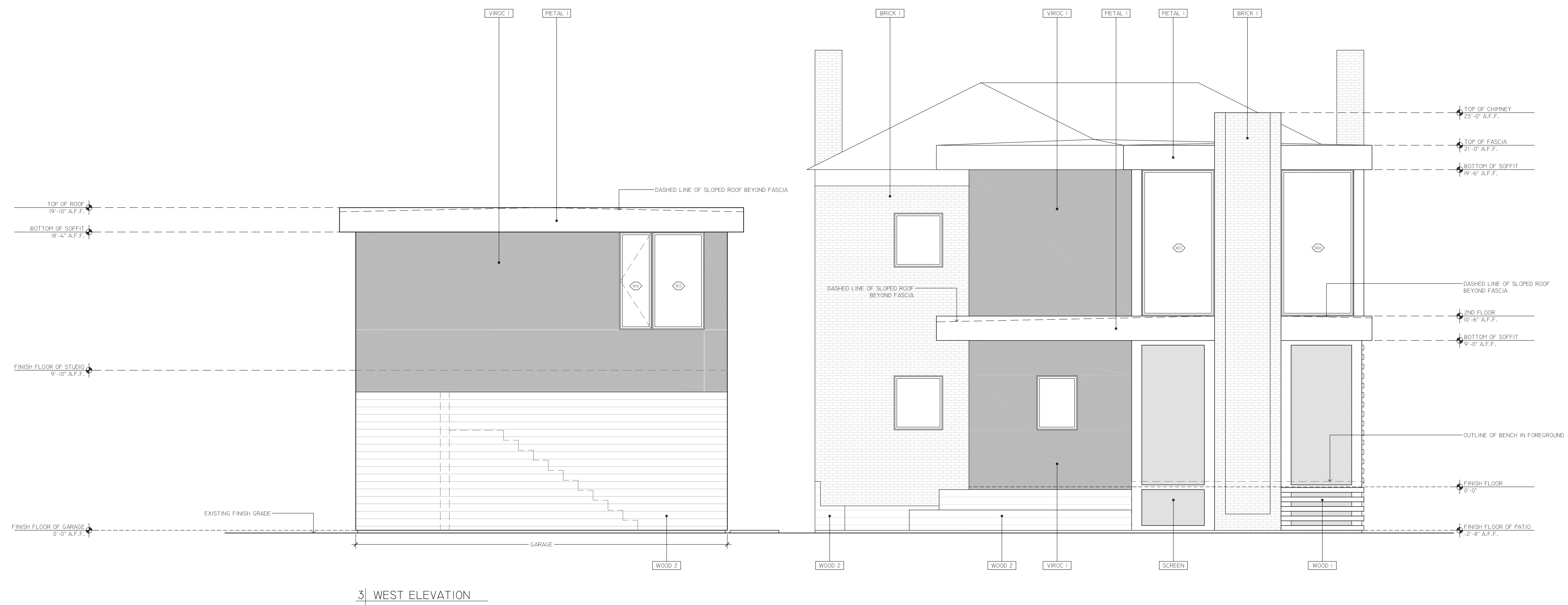
DRAWING TITLE  
ELEVATIONS

DRAWING NUMBER

A201



4 | SOUTH ELEVATION



3 | WEST ELEVATION

**PRELIMINARY  
NOT FOR CONSTRUCTION  
FOR BIDDING PURPOSES ONLY**

SCALE  
1/4" = 1'-0"

DATE  
10.12.2020

PROJECT NUMBER  
096\_BEXLEY HOUSE

ELEVATIONS

DRAWING NUMBER

A202