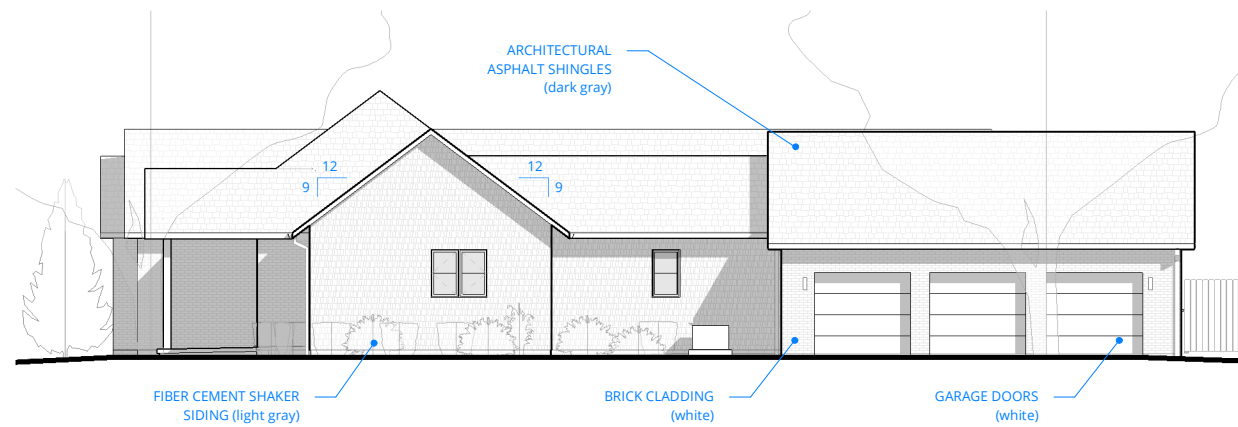


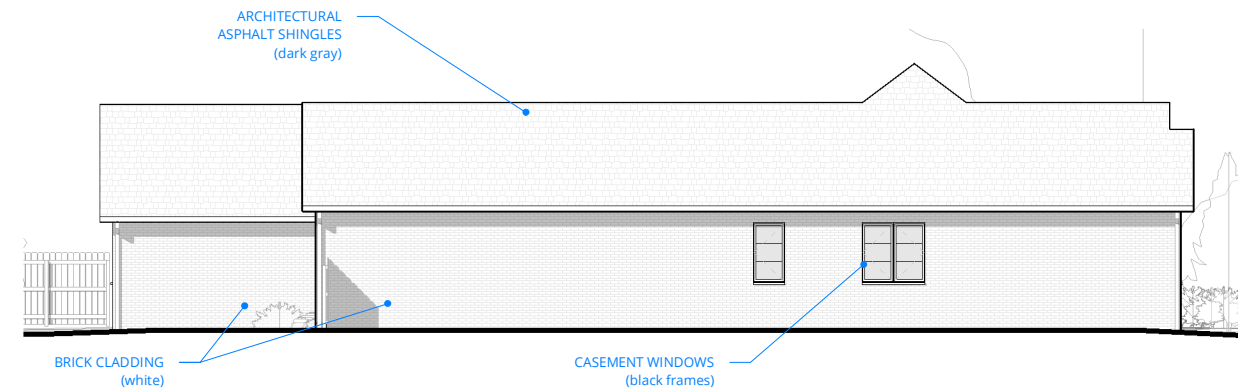
FRONT ELEVATION (w/ Neighboring Ridge Lines)

1/16" = 1'-0"



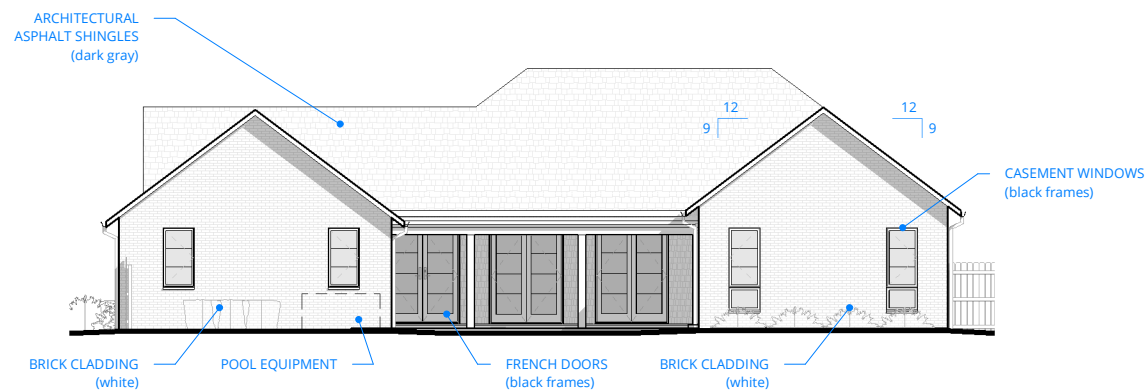
(RIGHT) SIDE ELEVATION

1/16" = 1'-0"



(LEFT) SIDE ELEVATION

1/16" = 1'-0"



BACK ELEVATION

1/16" = 1'-0"

189 N. MERKLE – TIMBER FRAMING DETAILS



Porch Gable truss profile: Common truss

Connection details: Simple, clean, minimalist look - concealed connections and/or discrete fasteners



Finish: Timber framing painted gray



Precedent images

