

Skylights

Standard Skylights are available prefabricated or knocked down.

S-Lines: 2-3/4" (70 mm) and 4" (100 mm) thick, flat skylights. 4' | 5' (1200 mm | 1500 mm) standard widths up to 5' x 20' (1500 mm x 6000 mm) in 1' (300 mm) long increments.

Pyramids: 2-3/4" (70 mm) from 4' x 4' (1200 mm x 1200 mm) to 20' x 20' (6000 mm x 6000 mm) in 1' (300 mm) increments.

Geo-Roofs®: 2-3/4" (70mm) in 17 standard sizes from 8' to 24' in diameter (2400 mm to 7300 mm).



photo: Liam Frederick

Pre-engineered Skyroofs®

Centerline Self-Supporting Ridge Roofs with 20°, 27°, 33°, 45° slope and spans up to 24' (7300 mm) utilizing 2-3/4" (70 mm) panels.

Kalcurve 180° vaults or 90° low-profile vaults are available in 1' (300 mm) increments up to 25' (7600 mm) max spans.

Pre-engineered Skyroofs are lightweight, under 3 lbs/ft² (14.65 kg/m²), allowing substructures to be minimized. Only thrust-bearing curb designs that accommodate local live, snow and wind load designs, provided by others, are required.



photo: Steven Wolfe

Custom Skyroofs

2-3/4" (70mm) or 4" (100 mm) thick structural sandwich panel systems over substructures by others.

Flat, curved or a combination for design versatility, consistent with Kalwall system parameters.

Easy, fast installations, coupled with large-sized panel formats.

Exceptional thermal performance and solar control options, including Kalwall+Lumira® aerogel, help meet LEED, BREEAM, IgCC and other international green building standards.



photo: Abstract Photography, Inc.

Clearspan™ Systems

Custom turn-key solutions from the curb-up, including factory finished aluminum substructures from strategic partner, Structures Unlimited, Inc. take Kalwall Skyroofs to another dimension with Clearspans up to +/- 100' (30 m).

Design control, engineering, project management, fabrication, delivery and complete installation, all with unparalleled service. Installations are completed in days or weeks, not months, due to precision digital fabrication and less trade coordination.

Complete buildings, including Pool Enclosures, feature built-in, corrosion and moisture resistance.



photo: courtesy of Kitchen & Associates

Kalwall Span Table: 4' (1200 mm) Wide Panel Module

Maximum Allowable Clearspan™ for Standard 2-3/4" (70 mm) Panels for Skyroofs

Shoji 8" x 20" (200 mm x 500 mm)

Live Load	30 PSF (1.44 kPa)	40 PSF (1.92 kPa)
Clearspan	11'-8" (3276 mm)	10'-8" (3251 mm)

Shoji 12" x 24" (300 mm x 600 mm)

Live Load	30 PSF (1.44 kPa)	40 PSF (1.92 kPa)
Clearspan	10'-6" (3200 mm)	9'-4" (2845 mm)

Clearspan at 25 PSF (1.2 kPa) wind pressure, L/60 minimum at 2:12. Spans based on engineering data and tests. Longer clearspans are possible. Contact the factory.

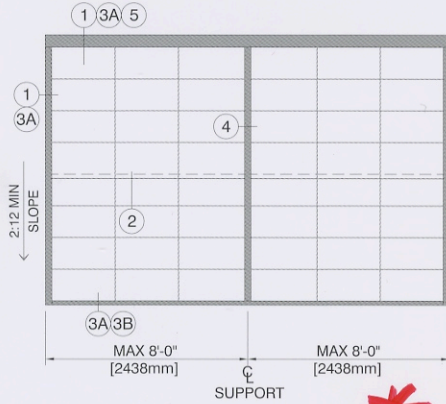
Recommended minimum pitch for Skyroofs is 2:12.

Skyroof® Details

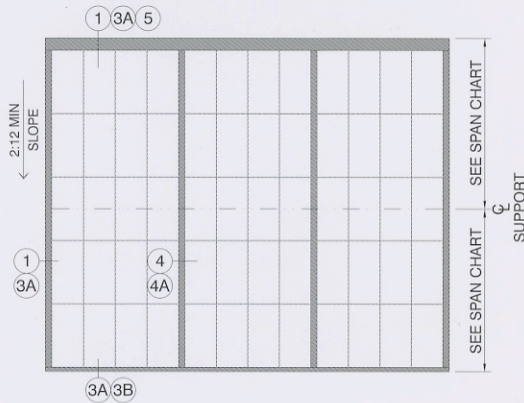
For on-slope, flat and curved panels

These are standard Clamp-tite™ details for 2-3/4" (70 mm) thick panels. Details for other conditions, including those for Self Supporting Ridge, Pyramid, Windborne Debris and Blast Resistant applications are similar, but not identical so please contact Kalwall for specifics. Electronic CAD versions of these Skyroof details and many more are available at: KALWALL.COM

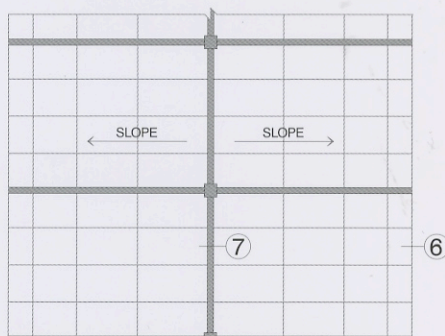
SKYROOF PLAN A
(PANELS ACROSS SLOPE - OVERLAP SYSTEM)



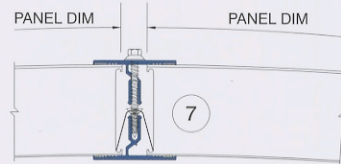
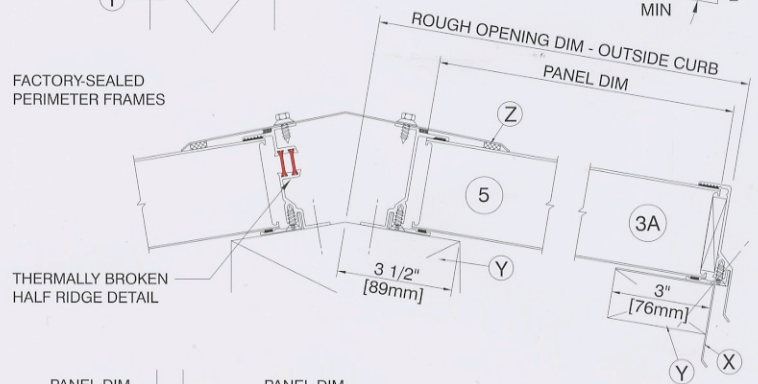
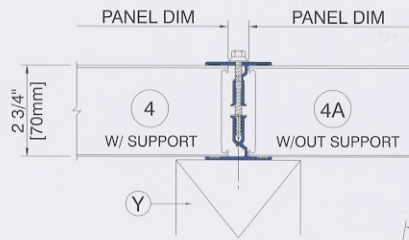
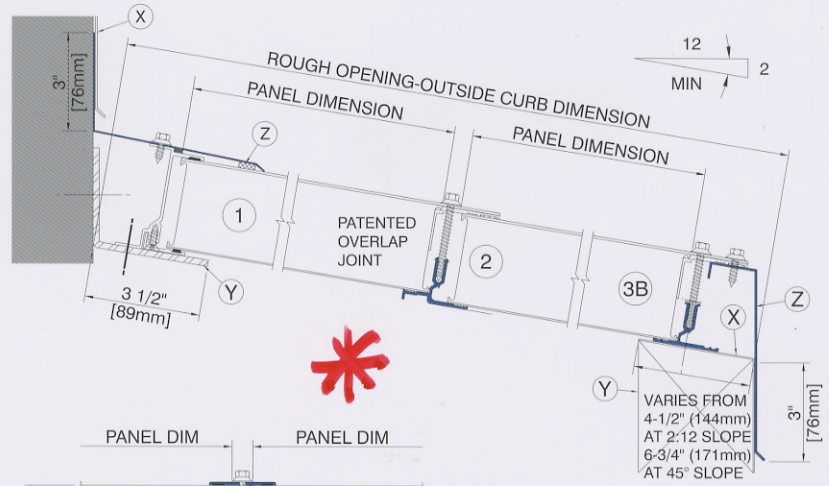
SKYROOF PLAN B
(PANELS ON SLOPE - 2" (51mm) BATTEN)



SKYROOF PLAN C
(KALCURVE LOW PROFILE VAULT)



PLEASE CONTACT KALWALL FOR SPAN INFORMATION ON KALCURVE 180° AND LOW PROFILE BARREL VAULTS



NOTES: LEGEND

- (V) BENT PLATE BY KALWALL
- (X) COUNTER FLASHING NOT BY KALWALL
- (Y) SUPPORT NOT BY KALWALL
- (Z) STANDARD FLASHING BY KALWALL

