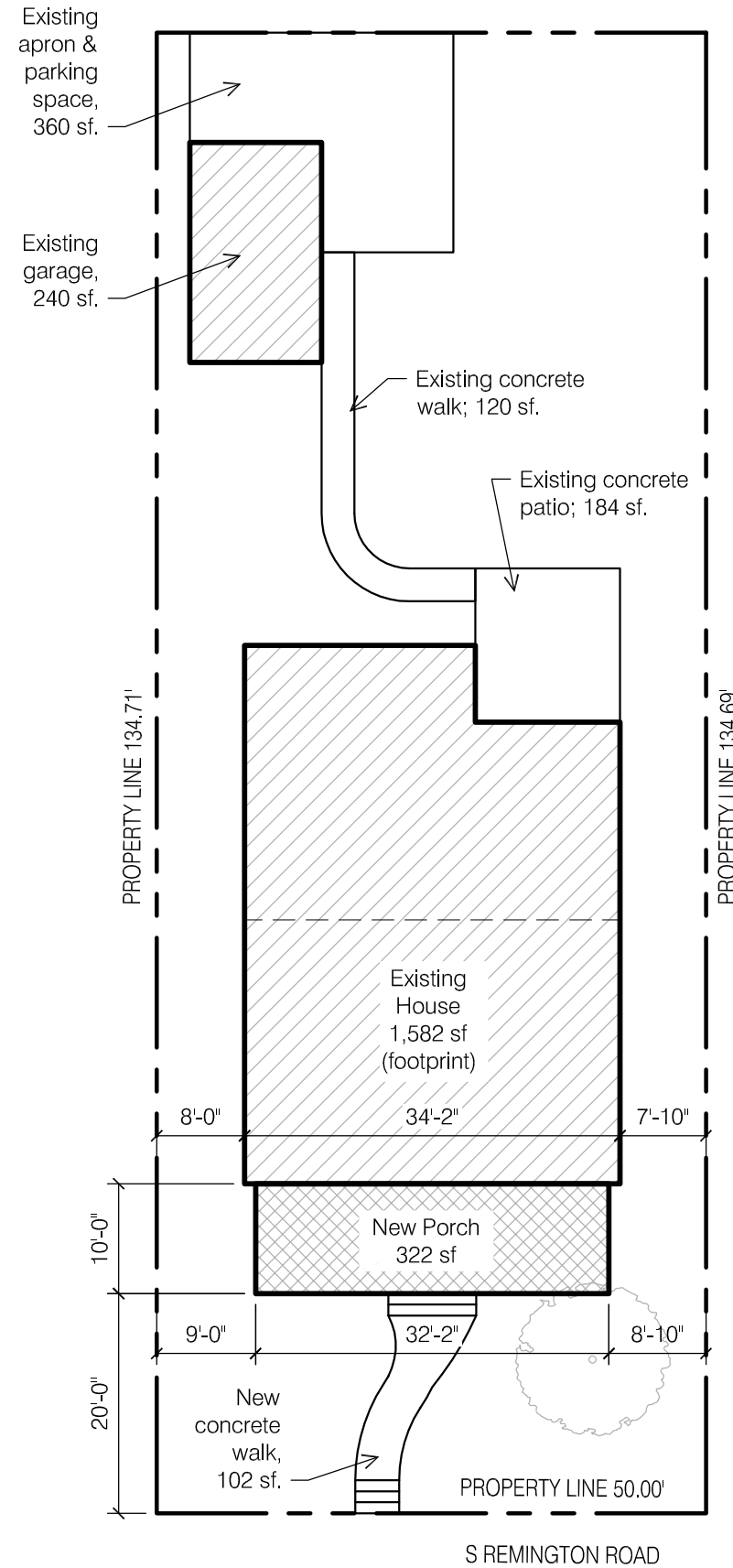


1 SITE PLAN - DEMO
SCALE: 1/16" = 1'-0"



2 SITE PLAN - NEW WORK
SCALE: 1/16" = 1'-0"



GENERAL INFORMATION

Address: 812 S Remington Road
Bexley, Ohio 43209
Franklin County Parcel: 020-002289-00

Scope of Project:
The project consists of exterior improvements including the construction of a new front porch, front door replacement, window replacement, and new front walk.

Porch Area: 120 sf

Zoning: Bexley R-6

Lot Area & Lot Width	Actual	Zoning Req't
Lot Area:	6,737 sf	6,000 sf
Lot Width:	50'	50'
Lot Depth	134'	120'

Building Coverage		
Building Coverage	2,144 sf (32%)	2,358 sf (35%)

Total Lot Coverage		
Lot Coverage	2,940 sf (44%)	4,042 sf (60%)

Front Porch	Actual	Zoning Req't
Front Porch SF:	322 sf	
Front Setback:	20'-0"	20'-0"
Side Setback:	8'-10"	8'-0"

SHEET INDEX

- A1.0 Site Plan & General Info
- A2.0 Overall Plans & Elevations - Demo
- A2.1 Overall Plans & Elevations - New Work
- A2.2 Enlarged Porch Plans
- A2.3 Enlarged Porch Plans
- A3.0 Front Porch Elevations
- A3.1 Sections & Details
- A3.2 Sections & Details

DESIGN CRITERIA

2019 Residential Code of Ohio
Design Criteria:
Wind Speed = 115 mph
Seismic Category = A
Weathering = Severe
Frost Line Depth = 36"
Termite = Moderate to Heavy
Ice Barrier Underlayment = Yes.
Floor Live Load = 40 psf
Snow Load Roof = 20 psf
Foundation Concrete Compressive Strength = 2,500
Slab Concrete Compressive Strength = 3,000; air-entrained 5%-7%

ARCHITECT
The Columbus Architectural Studio
405 N Front Street
Columbus, Ohio 43215
BRENDA PARKER
614-586-5514
brenda.parker@cbusarch.com



FOSTER FRONT PORCH
812 S REMINGTON ROAD
BEXLEY, OHIO 43209

Review Dwgs

SCALE:
As Noted

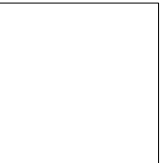
PROJECT NO.:

DATE:
July 12, 2025

SHEET NO.

A1.0

SITE PLAN & GENERAL INFO



FOSTER FRONT PORCH
812 S REMINGTON ROAD
BEXLEY, OHIO 43209

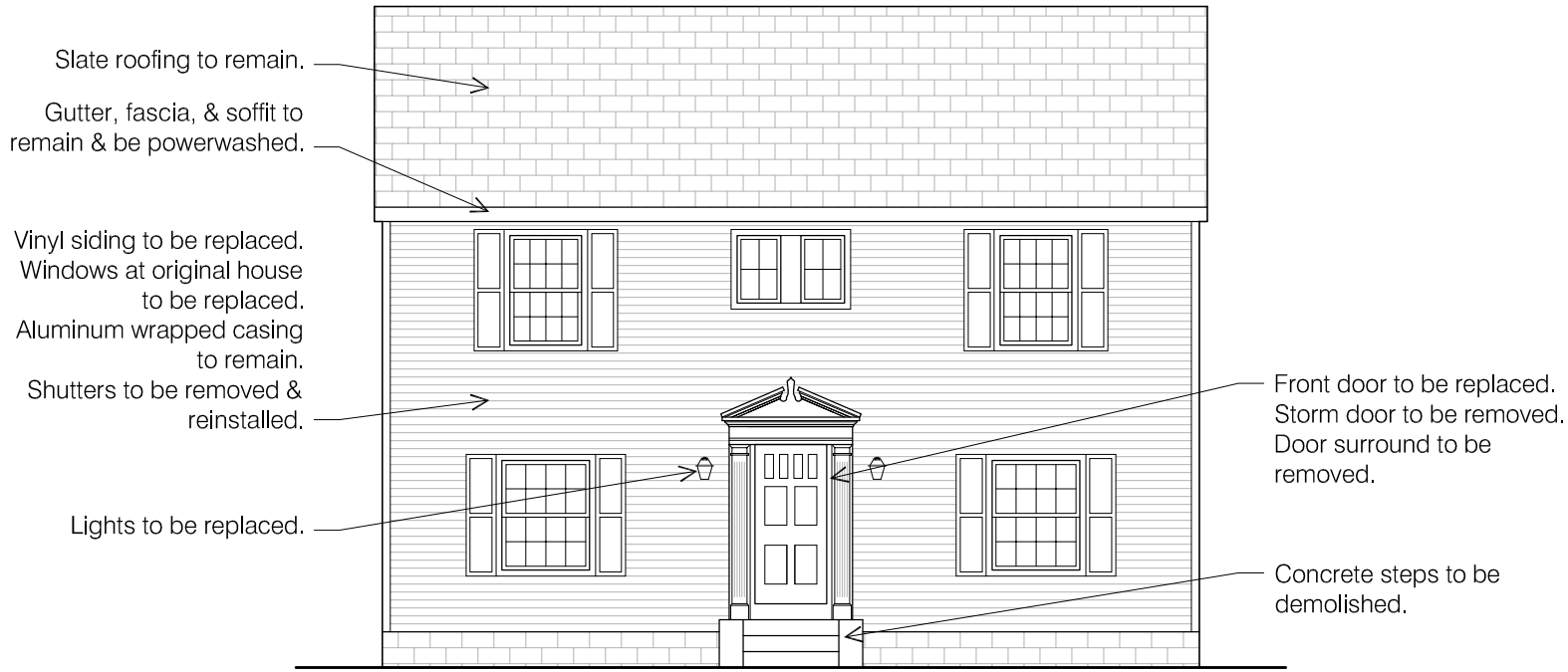
Review Dwgs

SCALE:
As Noted
PROJECT NO.:

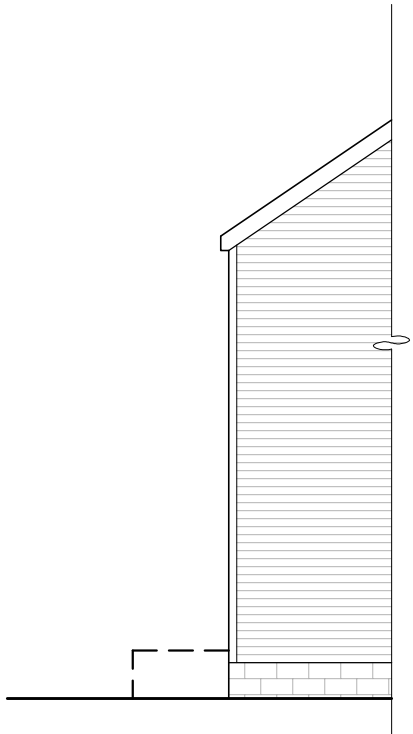
DATE:
July 12, 2025
SHEET NO.

A2.0

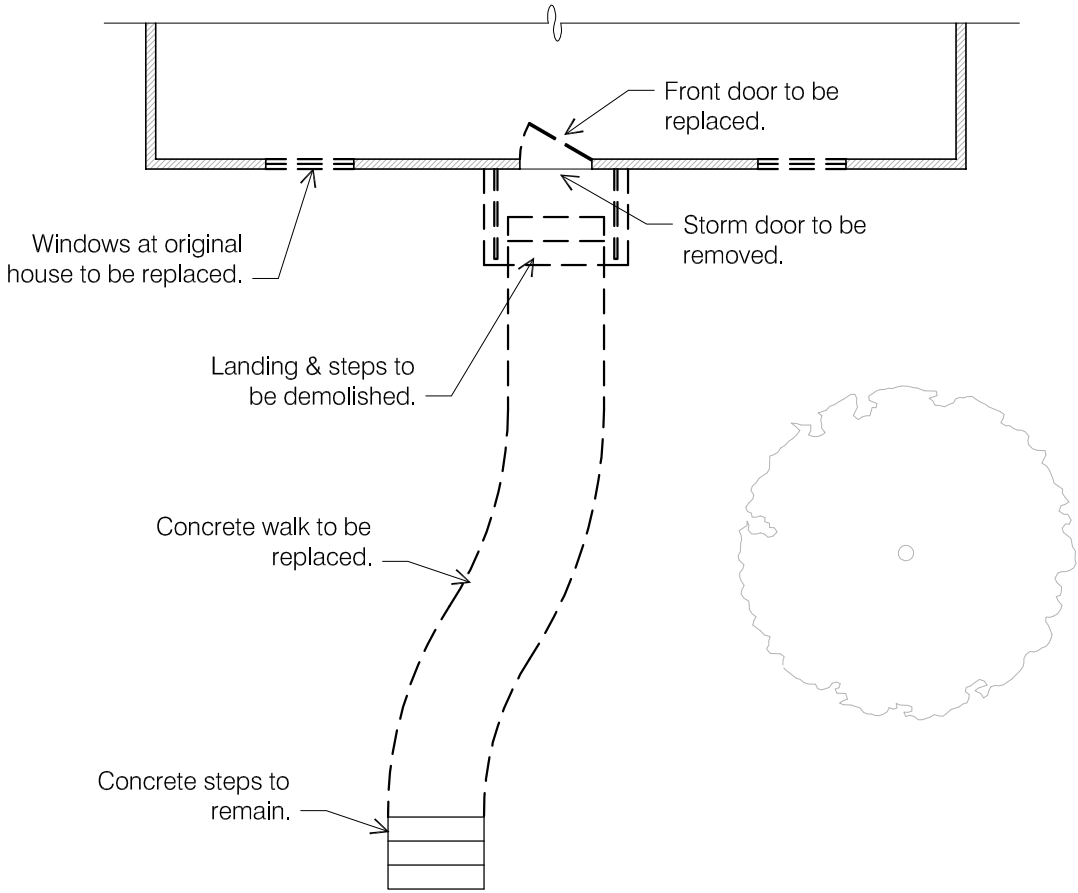
PLAN & ELEVATIONS - DEMO



2 FRONT ELEVATION - DEMO
SCALE: 1/8" = 1'-0"

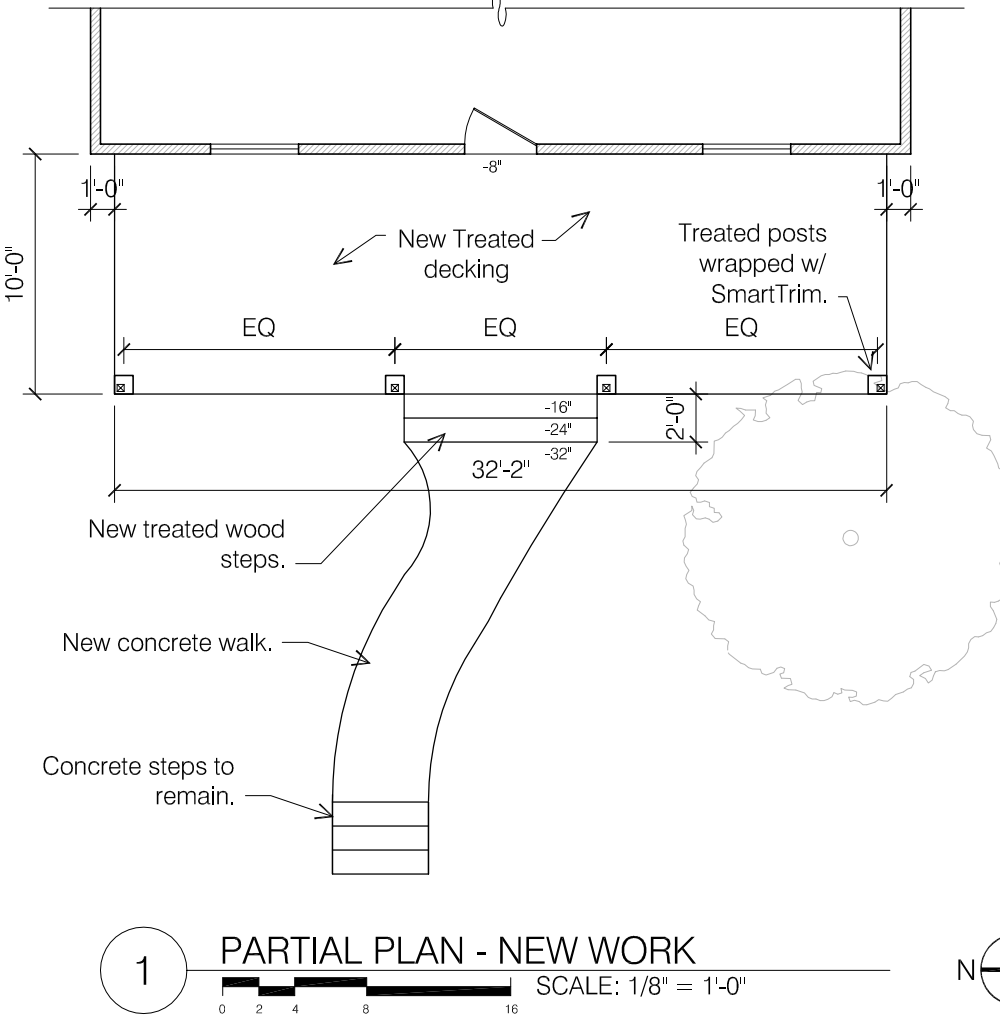
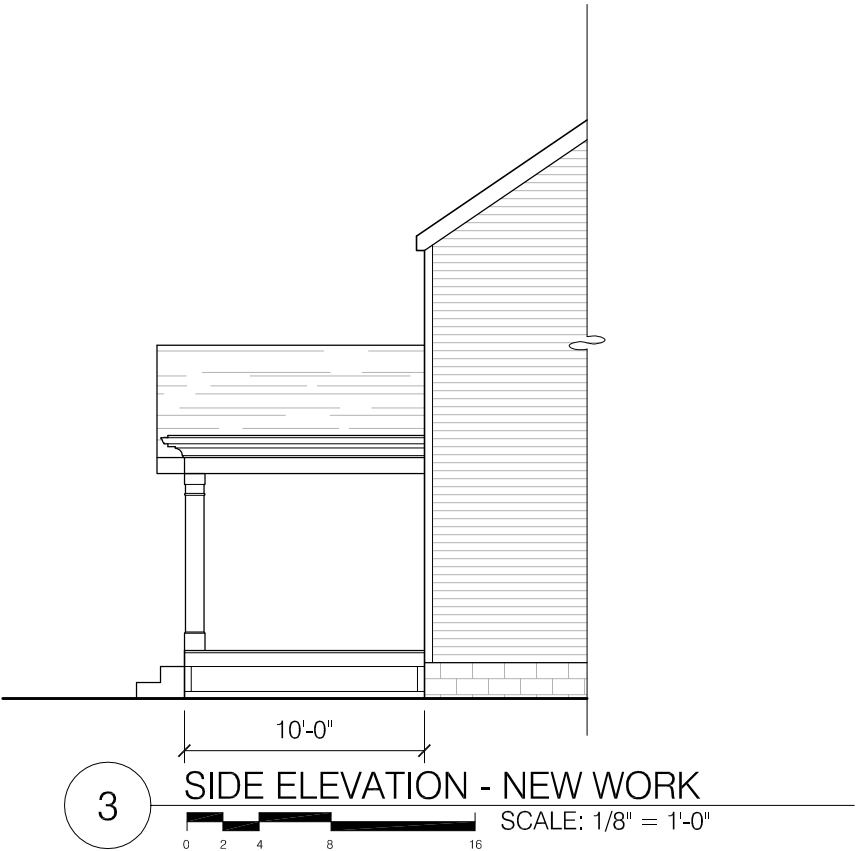
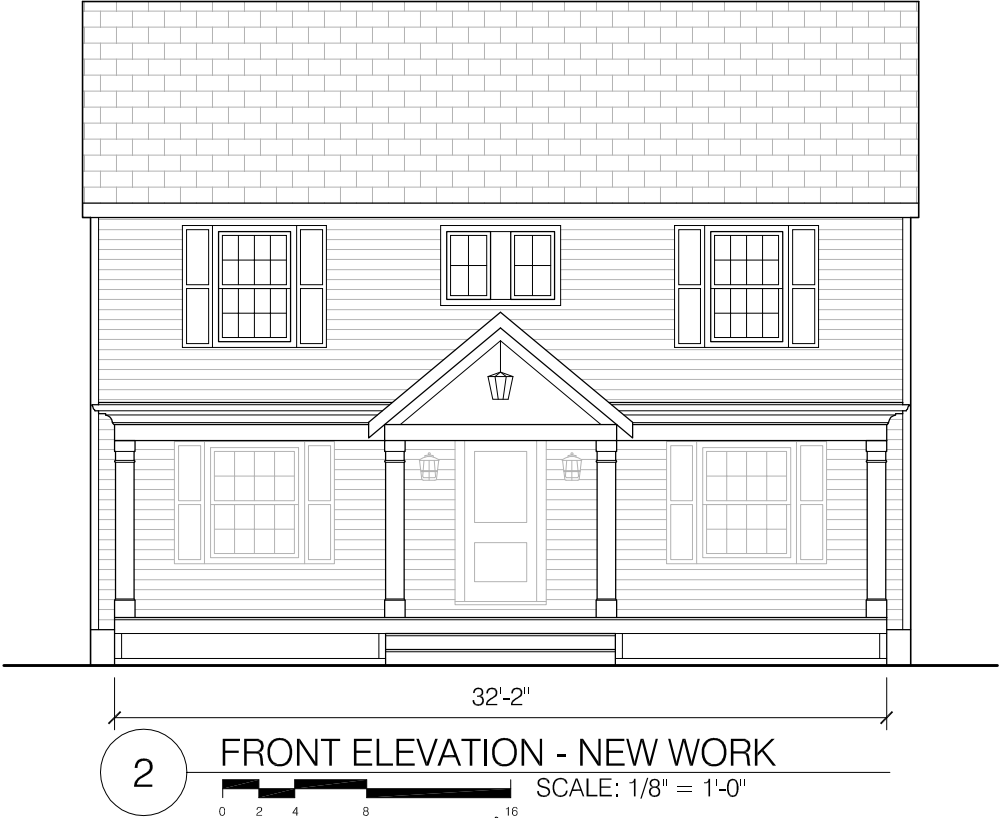


3 SIDE ELEVATION - DEMO
SCALE: 1/8" = 1'-0"



1 PARTIAL PLAN - DEMO
SCALE: 1/8" = 1'-0"





ARCHITECT
The Columbus Architectural Studio
405 N Front Street
Columbus, Ohio 43215

BRENDA PARKER
614-586-5514
brenda.parker@cbusarch.com



FOSTER FRONT PORCH
812 S REMINGTON ROAD
BEXLEY, OHIO 43209

Review Dwgs
SCALE:
As Noted
PROJECT NO.:

DATE:
July 12, 2025
SHEET NO.

A2.1

PLAN & ELEVATIONS - NEW WORK

THE EDISON SERIES

VINYL REPLACEMENT WINDOWS



4600
Double Hung

SIZE LIMITS

	Width	Height	UI*
Minimum	14"	24"	38
Maximum	52"	98"	132

MAXIMUM TRIPLE PANE SIZE 50" width x 80" height
*United Inches = Width + Height

PRODUCT FEATURES

- 3 1/4" Frame with beveled exterior
- Maintenance-free multi-chambered fusion welded vinyl
- IdeaSeal™ triple protection - integral interlock, sill compression seal and weatherstripping
- Dual function partitioned sloped sill
- Chisel bevel interior sash profiles
- Double weatherstripping on sashes
- Integral lift rails
- BioMaxx lead-free composite locks and keepers
- Flush mount tilt latches
- Double vent latches
- Concealed sash stop system
- Stainless steel constant force balances
- Metal drop in pivot cam
- Full balance covers
- Intelliglass high performance glass
- Dual (3/4") or triple (1-1/8") pane glass
- Tape glazed
- Intercept Spacer System
- Limited Lifetime Warranty

OPTIONAL FEATURES

- Sentry System hardware including dual-action tilt/lock & forced entry resistant night locks
- WOCD field applied "angel locks"
- 1-5/8" integral nailfin with 1" setback
- Super Spacer flexible warm-edge spacer system
- Tempered and STC rated glass
- Foam filled frame
- Heavy duty 1/2 Screen (White Only)
- Full FlexScreen™
- Woodgrain interior laminates
- Black or bronze exterior laminates on white
- Interior & exterior SDL packages

vinylmax
windows



2921 McBride Court
Hamilton, OH 45011
(800) 847-3736
vinylmax.com

WINDOW+DOOR
TOP 100
MANUFACTURERS



FGIA
Fenestration & Glazing
Industry Alliance



4600 05-24 Information accurate at time of printing. Product subject to change. ©2023 Vinylmax LLC



THE EDISON SERIES

PERFORMANCE DATA

No Grids

With Grids

4600 Double Hung	Intercept		Super Spacer		VLT	ENERGY STAR 7.0
	U Value	SHGC	U Value	SHGC		
IntelliGlass Low E / Argon	.29	.29	.28	.29	.54	
IntelliGlass X Low E / Argon	.28	.21	.27	.21	.49	SC S
IntelliGlass N Low E / Argon	.25	.46	.24	.46	.54	N
IntelliGlass C Low E / Argon	.24	.20	.23	.20	.45	NC SC S
IntelliGlass X3 Triple Pane Low E / Argon	.25	.20	.23	.20	.45	NC SC S
IntelliGlass Plus Triple Pane Low E / Argon	.20	.24	.18	.24	.42	N NC

4650/4653 Slider	Intercept		Super Spacer		VLT	ENERGY STAR 7.0
	U Value	SHGC	U Value	SHGC		
IntelliGlass Low E / Argon	.29	.29	.28	.29	.55	
IntelliGlass X Low E / Argon	.28	.21	.27	.21	.50	SC S
IntelliGlass N Low E / Argon	.25	.47	.24	.47	.56	N
IntelliGlass C Low E / Argon	.24	.20	.23	.20	.45	NC SC S
IntelliGlass X3 Triple Pane Low E / Argon	.25	.20	.23	.20	.46	NC SC S
IntelliGlass Plus Triple Pane Low E / Argon	.20	.25	.18	.25	.43	N NC

4670 Picture Window	Intercept		Super Spacer		VLT	ENERGY STAR 7.0
	U Value	SHGC	U Value	SHGC		
IntelliGlass Low E / Argon	.28	.31	.27	.31	.58	
IntelliGlass X Low E / Argon	.27	.23	.26	.23	.53	SC S
IntelliGlass N Low E / Argon	.24	.49	.23	.49	.58	N
IntelliGlass C Low E / Argon	.23	.21	.22	.21	.48	NC SC S
IntelliGlass X3 Triple Pane Low E / Argon	.23	.21	.22	.21	.48	NC SC S
IntelliGlass Plus Triple Pane Low E / Argon	.18	.26	.17	.26	.45	N NC

Product Rating	Up to this size window*	Structural Test Pressure PSF	Water Resistance PSF	Air Infiltration cfm/ft ²
Double Hung R-PG45	40" x 63" SS glass	45	7.5	0.12
Double Hung R-PG50	40" x 63" DS glass	50	7.5	0.09
Slider R-PG25	63" x 44" SS glass	25	4.5	0.13

The lower the **U-value**, the greater a window's resistance to heat flow and the better its insulating value.
The lower the **SHGC**, the more a product is blocking solar heat from coming through the window.
VLT - Visible Light Transmittance - lower values mean less light passing through the window.

* windows outside these size limits have not been structurally tested



Fenestration & Glazing Industry Alliance



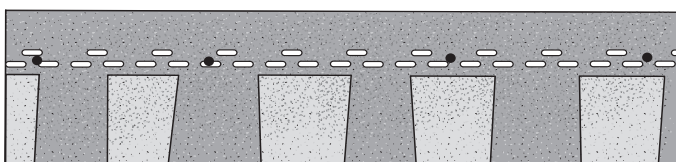
Information accurate at time of printing. Product subject to change. ©2023 Vinylmax LLC

Briarwood Pro™

Exceptional Design. Lasting Performance.



Stylish Performance. Elegant Protection. Briarwood Pro™ shingles combine style and high-definition color with superior protection against wind for elegance that protects.



Length: 42" / 1066.8 mm
Width: 14" / 355.6 mm

Exposure: 6" / 152.4 mm
Shingles Per Bundle: 18-20

FEATURES

Available In 5 Colors
130 mph Wind Limited Warranty*
Algae Resistant Shingle
Lifetime Limited Shingle Warranty*
Atlas Signature Select® Eligible¹

ASTM

D7158, Class H Wind Resistance,
Passed at 150 mph
D6381, Uplift Resistance
D3018, Type 1
D3161, Class F, Tested at 110 mph
D3462, As Manufactured
E108, Class A Fire Resistance

UL

790, Class A Fire Resistance

CODES AND COMPLIANCES

CAN/CSA-A123.5-M90



For maximum protection and warranty coverage, install an Atlas Signature Select® Roofing System with components designed and backed by an Atlas warranty.

SAFETY, STORAGE AND HANDLING

WARNING: Roofing application can be dangerous. Observe all precautions and safety guidelines in accordance with proper roofing trade practices. Minimize roof traffic. Perform regular roof maintenance in appropriate weather.

IMPORTANT PRECAUTIONS: Store on flat surface. Protect from weather during storage and on job site. Sealant protection tape is placed on back of each shingle and does not have to be removed before applying.

For additional safety, storage and handling instructions go to: AtlasRoofing.com/roof-shingles/sds

INSTALLATION AND SPECIFICATIONS

For warranty installation instructions go to: AtlasRoofing.com/roof-shingles/briarwood-pro-shingles

For detailed installation and complete 3-part specifications go to: AtlasRoofing.com/roof-shingles/specifications

Atlas Roofing Corporation (ATLAS) warrants to you, the original owner of its shingle products, that this product is free from any manufacturing defects that materially affect the performance of your shingle during the Premium Protection Period or that cause leaks for the balance of the applicable warranty period.

* Refer to the Atlas Roofing Limited Shingle Warranty for all coverage requirements.

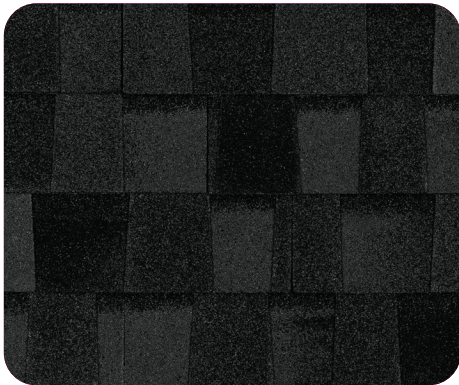
¹ Refer to the Atlas Signature Select® Limited Warranty for all system coverage requirements.



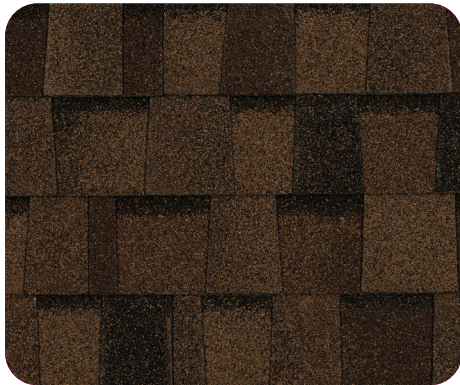
AtlasRoofing.com #AtlasProtects

© Copyright 2023, Atlas Roofing Corporation ATL-225975-01 5/23

Colors



Blackstone



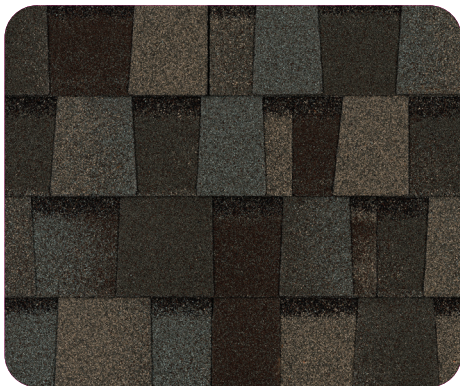
Chestnut



Copper Canyon



Granite



Majestic



Midnight Lake



Summer Storm



LIFETIME
limited warranty

Comprehensive warranty coverage for damage from high winds and manufacturer defects.



UP TO
130MPH
wind resistance

Beauty meets protection with the help of the Atlas 130 mph Wind Limited Warranty*.



ARS
algae resistance

Maintain the roof's appearance for years by resisting the ugly black streaks caused by algae.



HP42
technology

These bigger 42" shingles mean a faster install, quicker clean up and less waste - plus big savings on materials and labor.

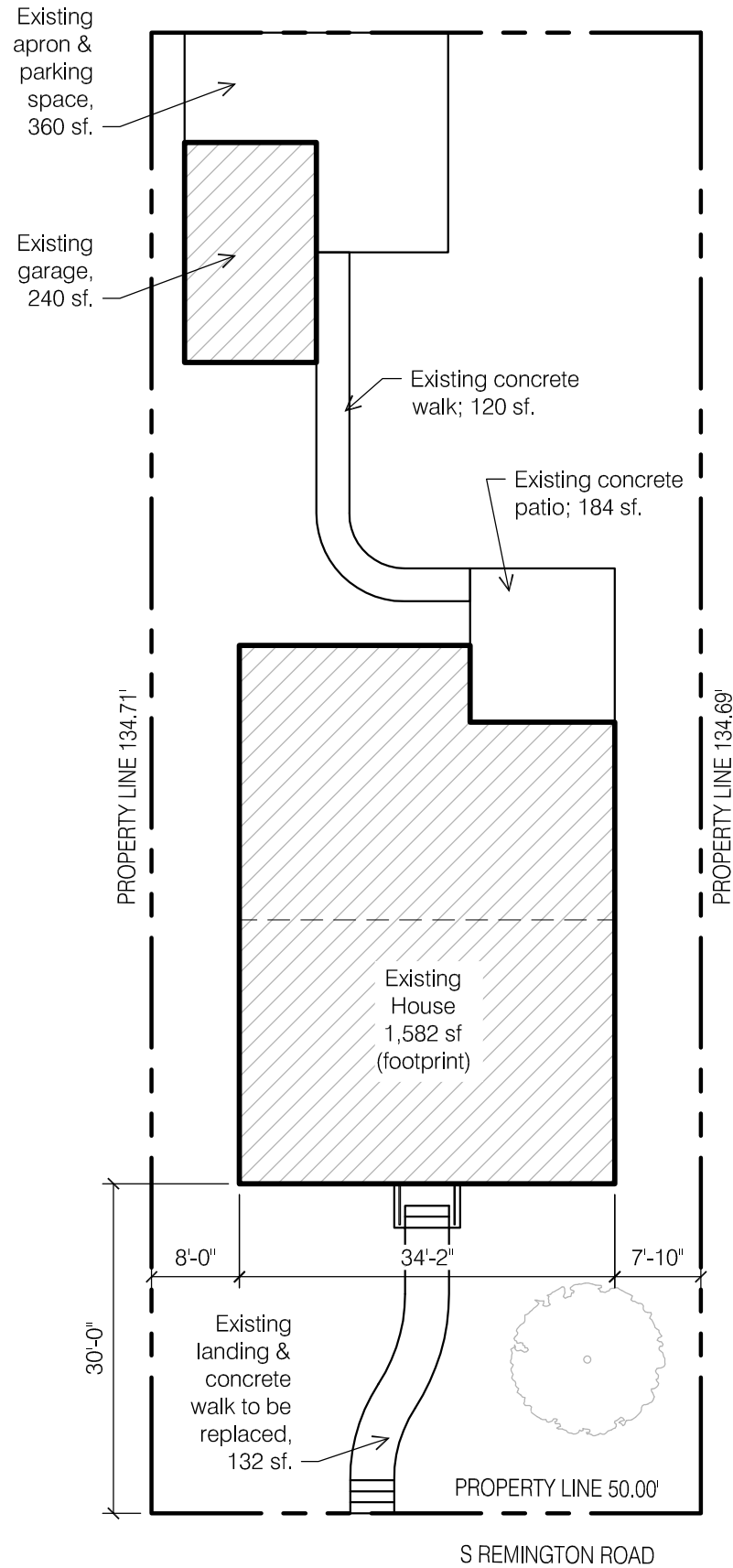


To provide homeowners the most accurate representation of color options, several photo scans and house shots were utilized in various lighting conditions. Variations in lighting illustrate the color gradients on asphalt shingle roofs.

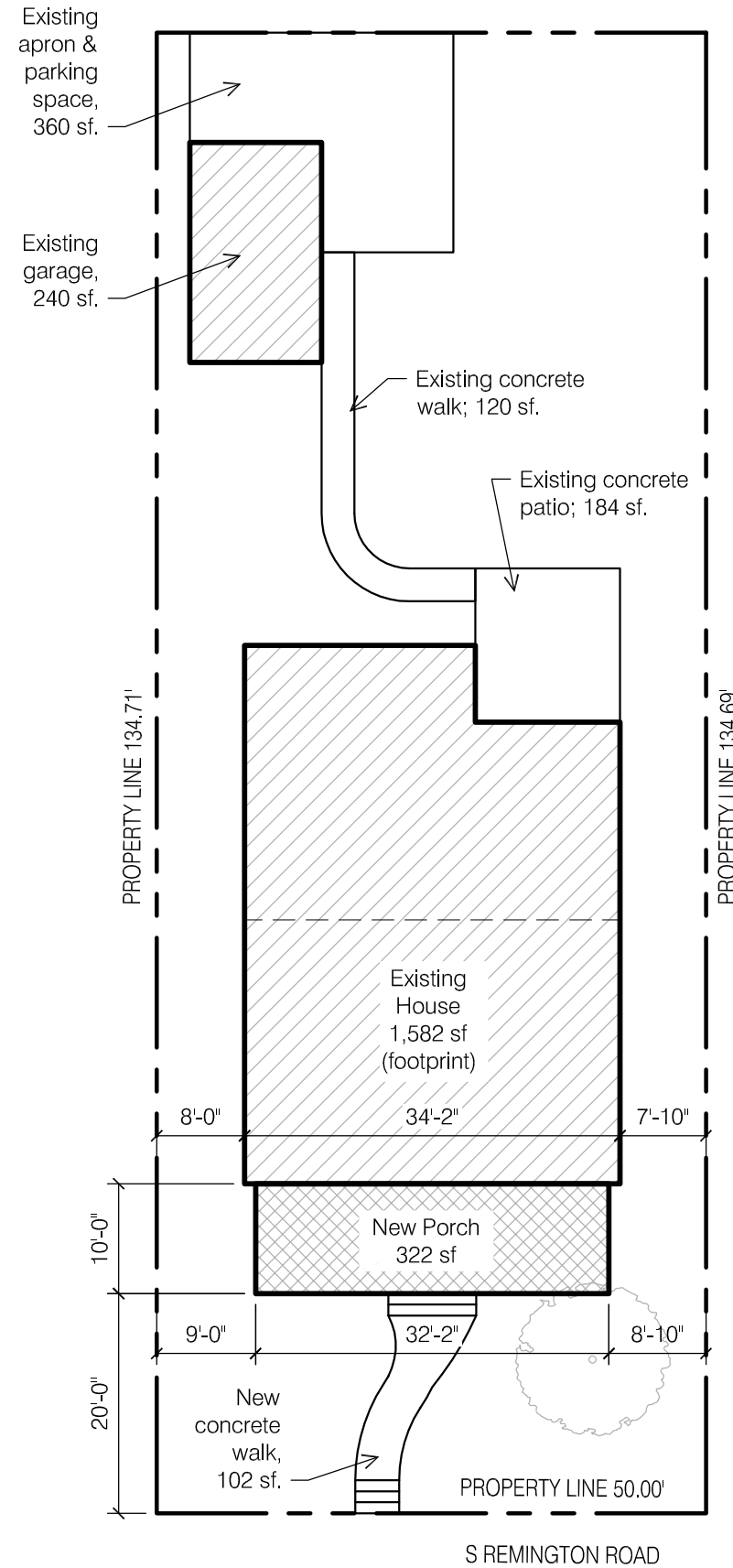
Color blends vary from shingle to shingle. Before installation, consult with your contractor and request to view the actual shingles being installed on your roof to ensure confidence in your final color selection.







1 SITE PLAN - DEMO
SCALE: 1/16" = 1'-0"



2 SITE PLAN - NEW WORK
SCALE: 1/16" = 1'-0"



GENERAL INFORMATION

Address: 812 S Remington Road
Bexley, Ohio 43209
Franklin County Parcel: 020-002289-00

Scope of Project:
The project consists of exterior improvements including the construction of a new front porch, front door replacement, window replacement, and new front walk.

Porch Area: 120 sf

Zoning: Bexley R-6

Lot Area & Lot Width	Actual	Zoning Req't
Lot Area:	6,737 sf	6,000 sf
Lot Width:	50'	50'
Lot Depth	134'	120'

Building Coverage		
Building Coverage	2,144 sf (32%)	2,358 sf (35%)

Total Lot Coverage		
Lot Coverage	2,940 sf (44%)	4,042 sf (60%)

Front Porch	Actual	Zoning Req't
Front Porch SF:	322 sf	
Front Setback:	20'-0"	20'-0"
Side Setback:	8'-10"	8'-0"

SHEET INDEX

- A1.0 Site Plan & General Info
- A2.0 Overall Plans & Elevations - Demo
- A2.1 Overall Plans & Elevations - New Work
- A2.2 Enlarged Porch Plans
- A2.3 Enlarged Porch Plans
- A3.0 Front Porch Elevations
- A3.1 Sections & Details
- A3.2 Sections & Details

DESIGN CRITERIA

2019 Residential Code of Ohio
Design Criteria:
Wind Speed = 115 mph
Seismic Category = A
Weathering = Severe
Frost Line Depth = 36"
Termite = Moderate to Heavy
Ice Barrier Underlayment = Yes.
Floor Live Load = 40 psf
Snow Load Roof = 20 psf
Foundation Concrete Compressive Strength = 2,500
Slab Concrete Compressive Strength = 3,000; air-entrained 5%-7%

ARCHITECT
The Columbus Architectural Studio
405 N Front Street
Columbus, Ohio 43215
BRENDA PARKER
614-586-5514
brenda.parker@cbusarch.com



FOSTER FRONT PORCH
812 S REMINGTON ROAD
BEXLEY, OHIO 43209

Review Dwgs

SCALE:
As Noted

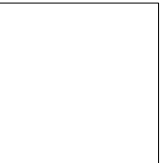
PROJECT NO.:

DATE:
July 12, 2025

SHEET NO.

A1.0

SITE PLAN & GENERAL INFO



FOSTER FRONT PORCH
812 S REMINGTON ROAD
BEXLEY, OHIO 43209

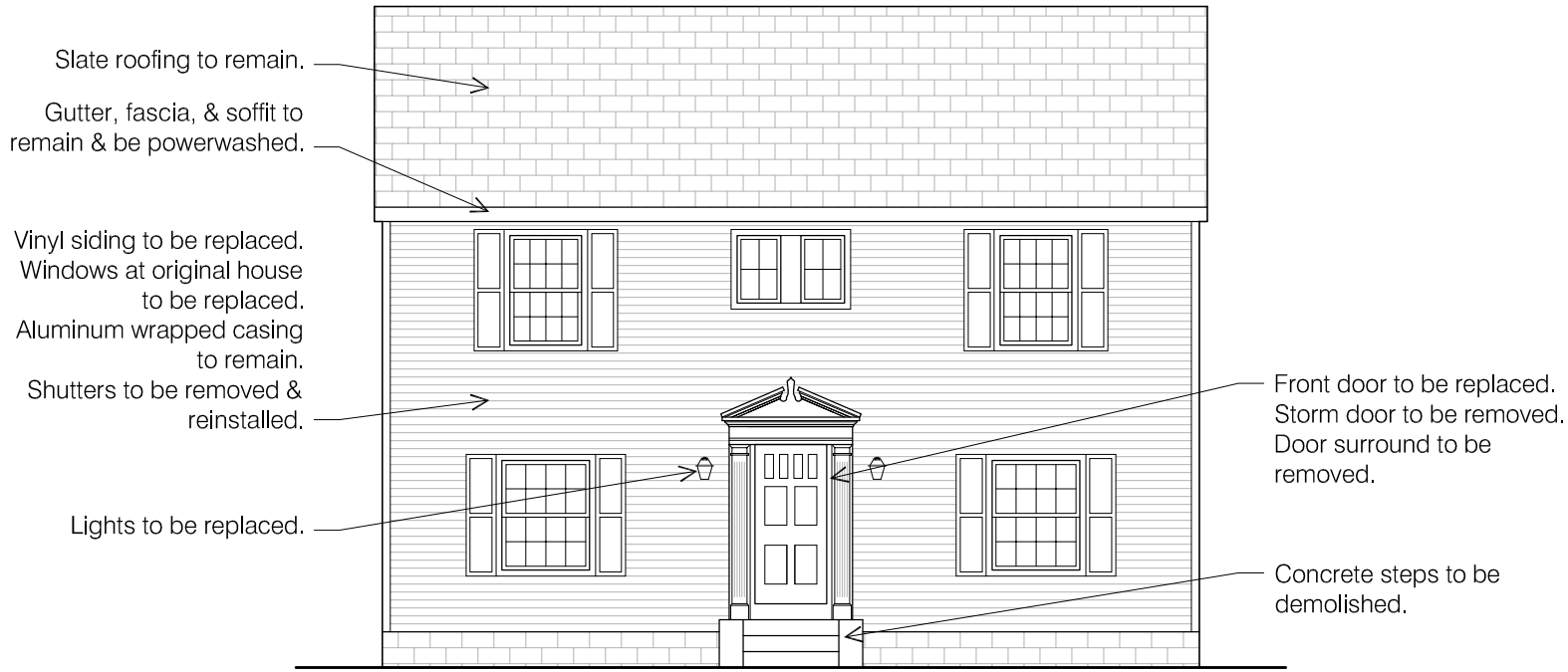
Review Dwgs

SCALE:
As Noted
PROJECT NO.:

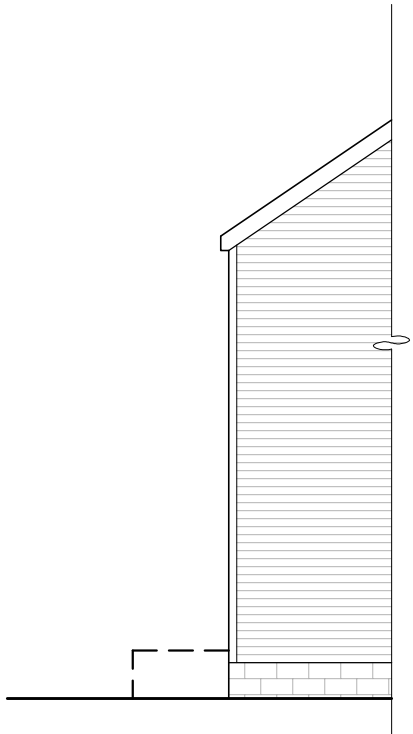
DATE:
July 12, 2025
SHEET NO.

A2.0

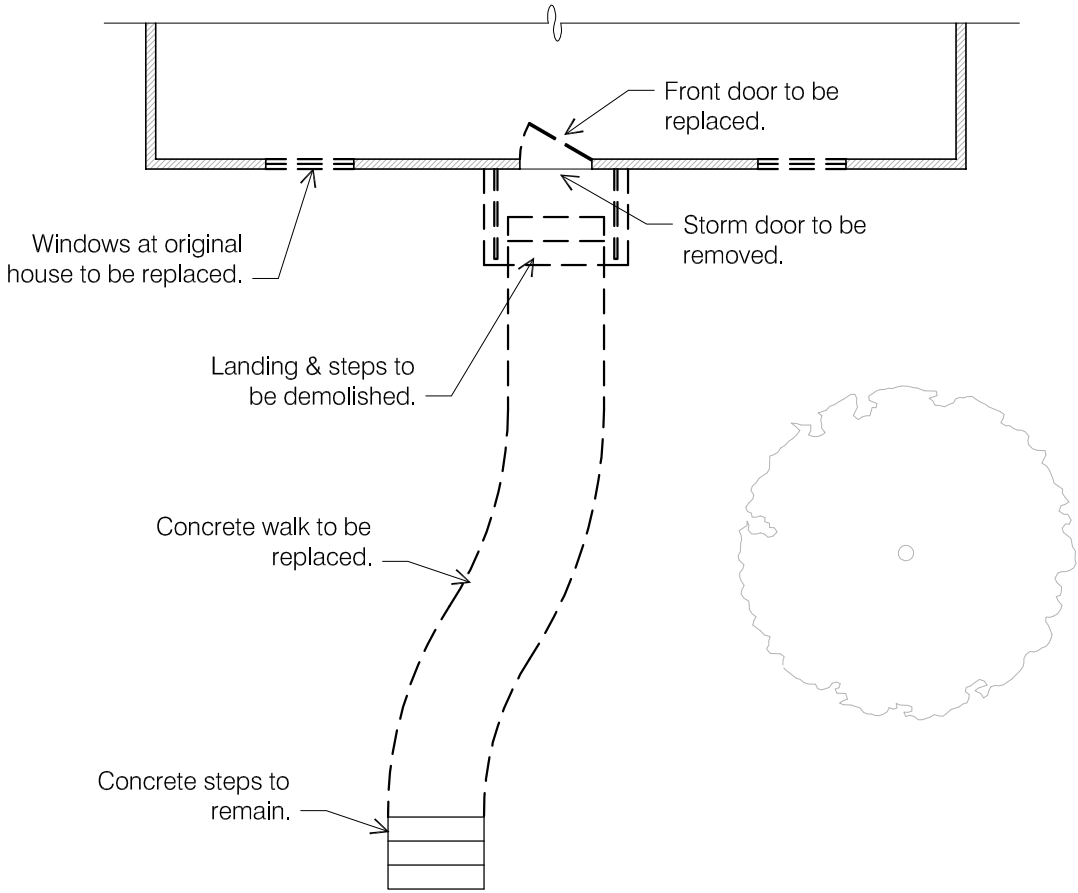
PLAN & ELEVATIONS - DEMO



2 FRONT ELEVATION - DEMO
SCALE: 1/8" = 1'-0"

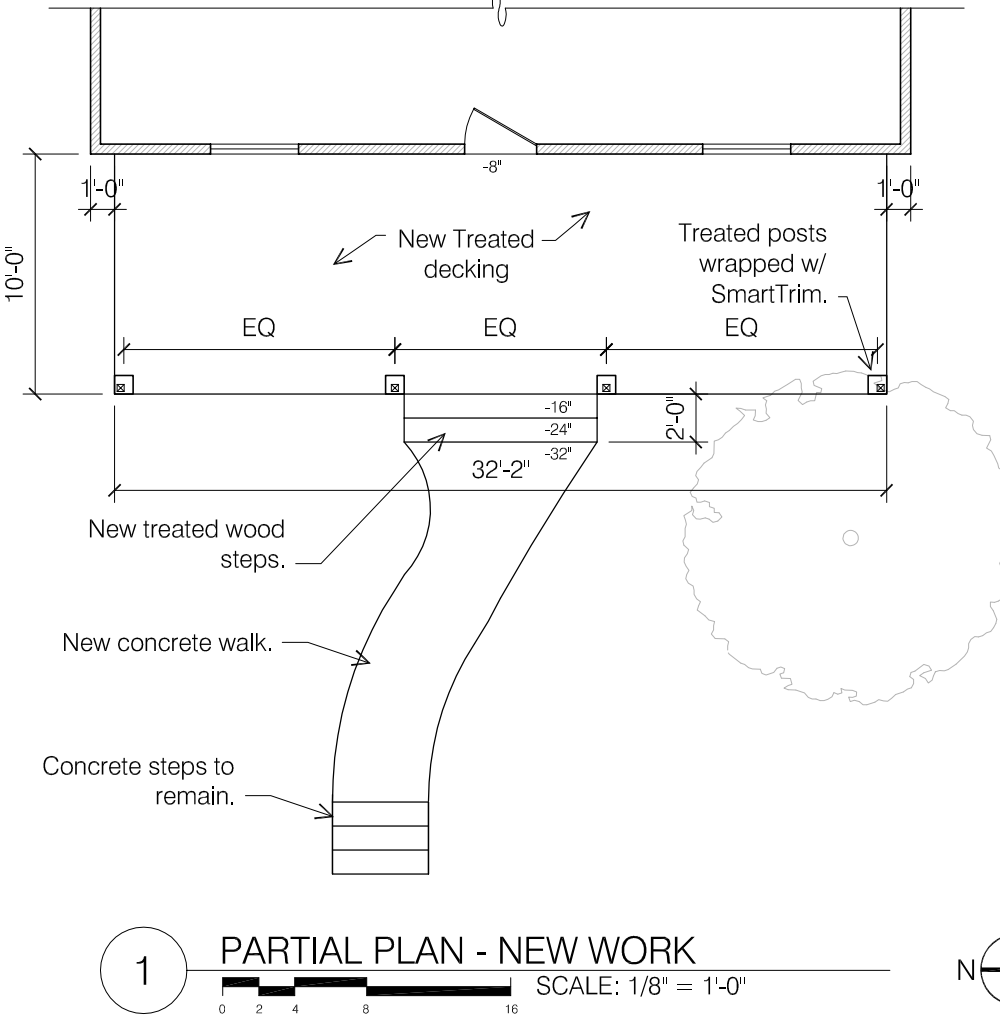
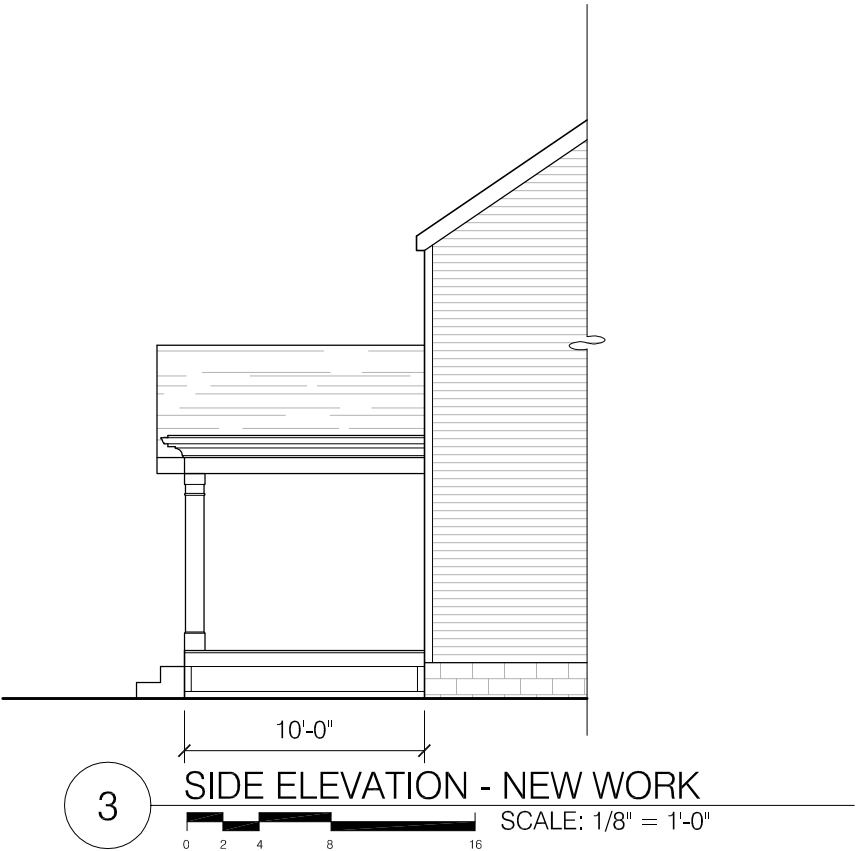
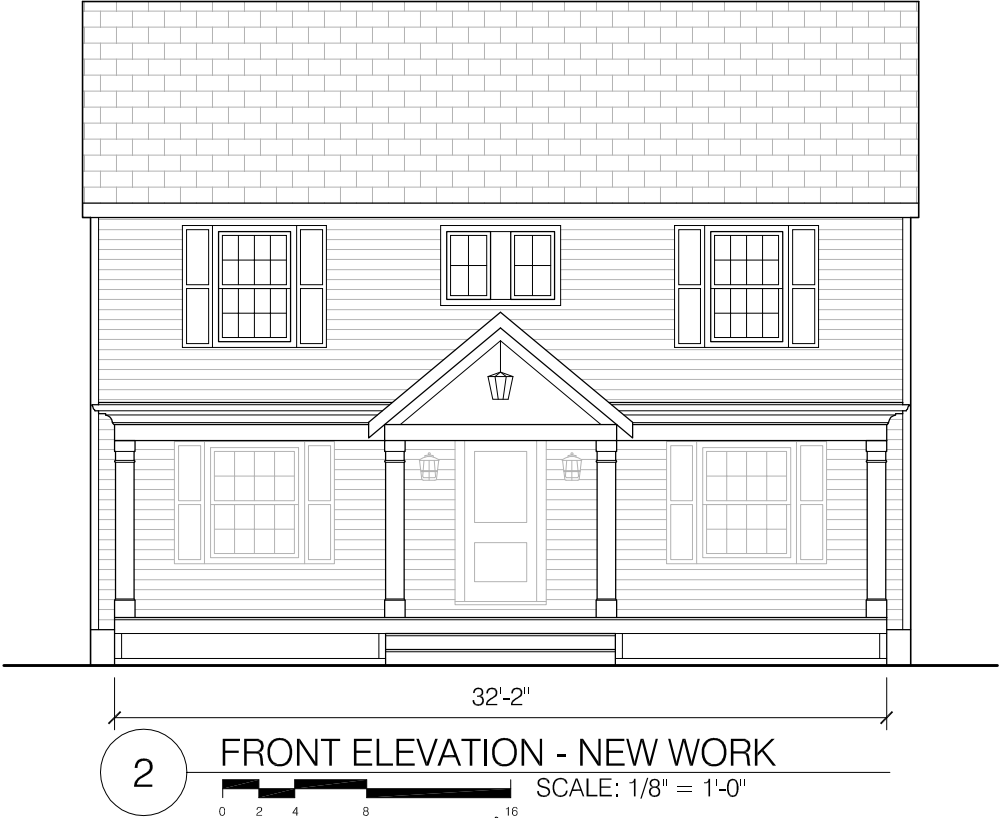


3 SIDE ELEVATION - DEMO
SCALE: 1/8" = 1'-0"



1 PARTIAL PLAN - DEMO
SCALE: 1/8" = 1'-0"





ARCHITECT
The Columbus Architectural Studio
405 N Front Street
Columbus, Ohio 43215

BRENDA PARKER
614-586-5514
brenda.parker@cbusarch.com



FOSTER FRONT PORCH
812 S REMINGTON ROAD
BEXLEY, OHIO 43209

Review Dwgs
SCALE:
As Noted
PROJECT NO.:

DATE:
July 12, 2025
SHEET NO.

A2.1

PLAN & ELEVATIONS - NEW WORK