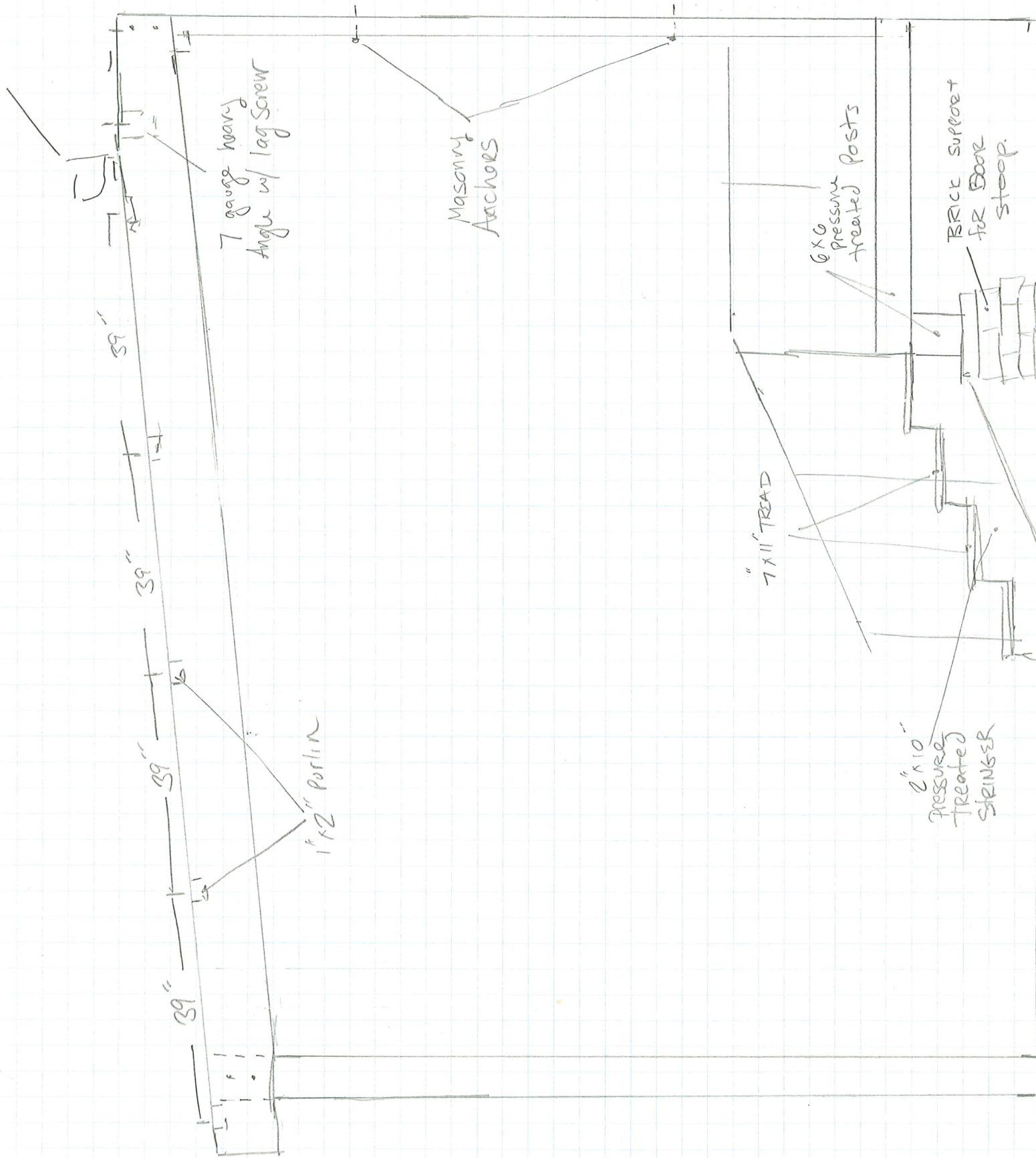
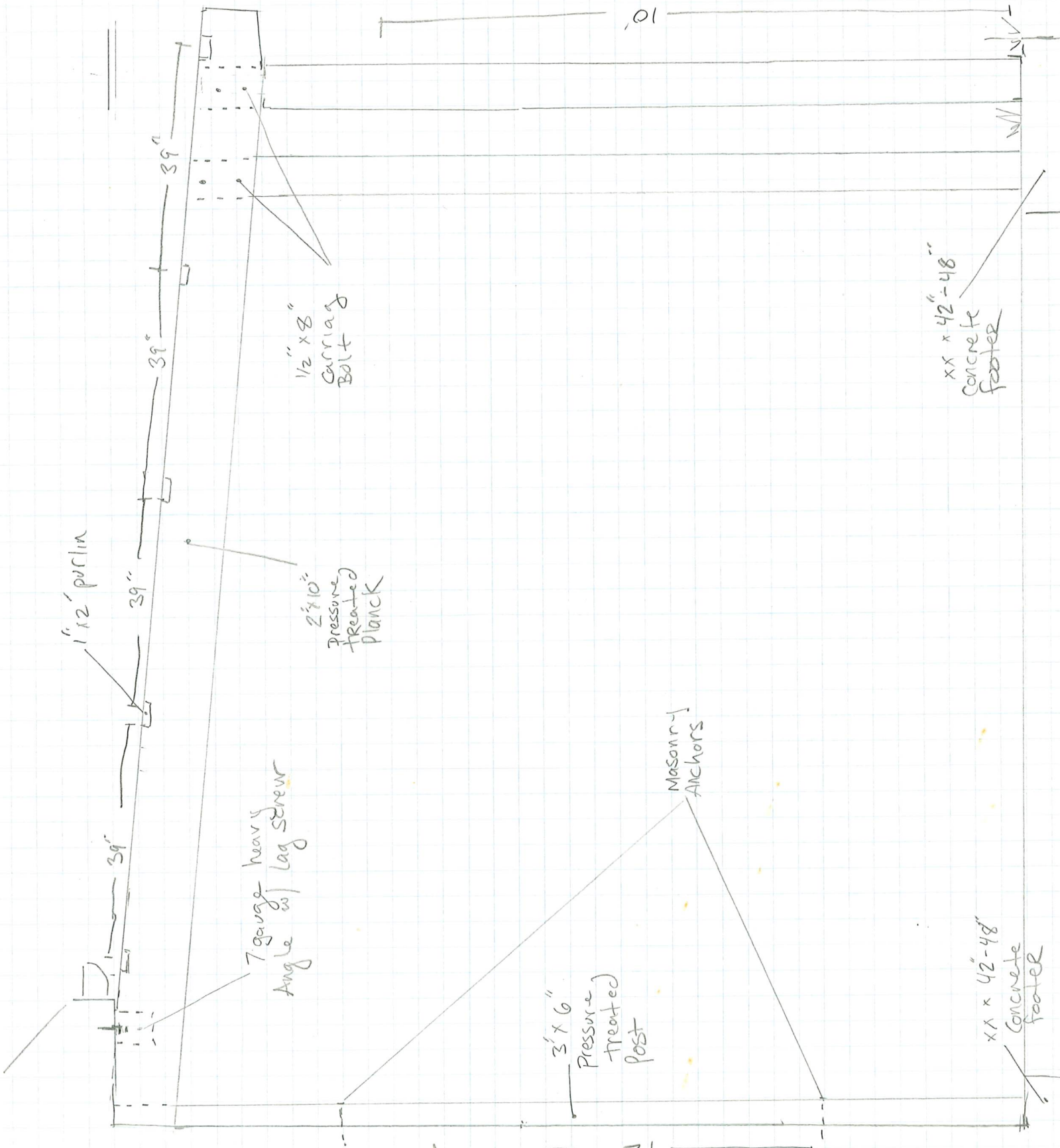


SOUTH
SIDE



NORTH
SIDE



xx x 42-48"
Concrete
footer

xx x 42-48"
Concrete
footer

3' x 6"
Pressure
treated
post

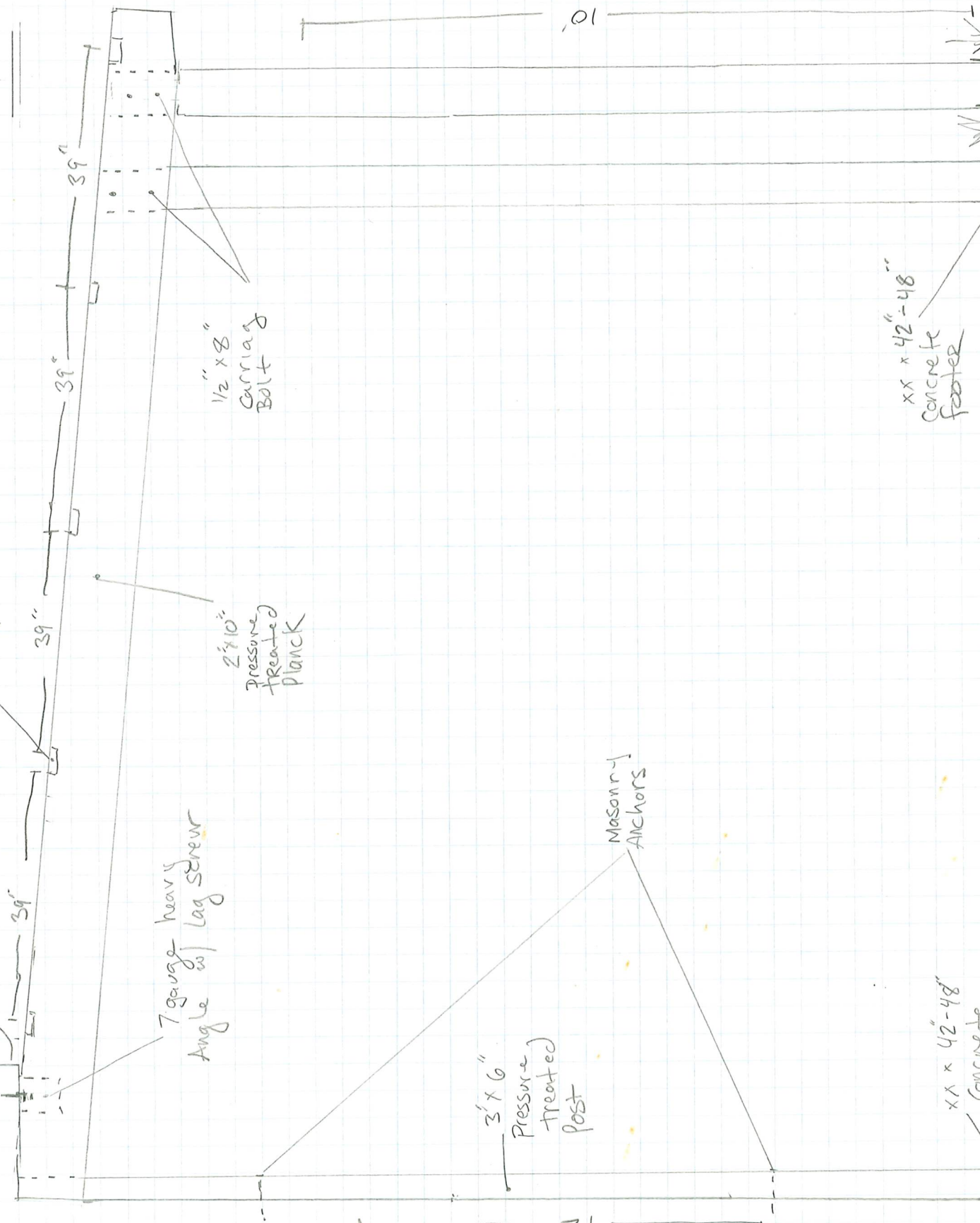
Masonry
Anchors

7 gauge heavy
Angle w/ lag screw

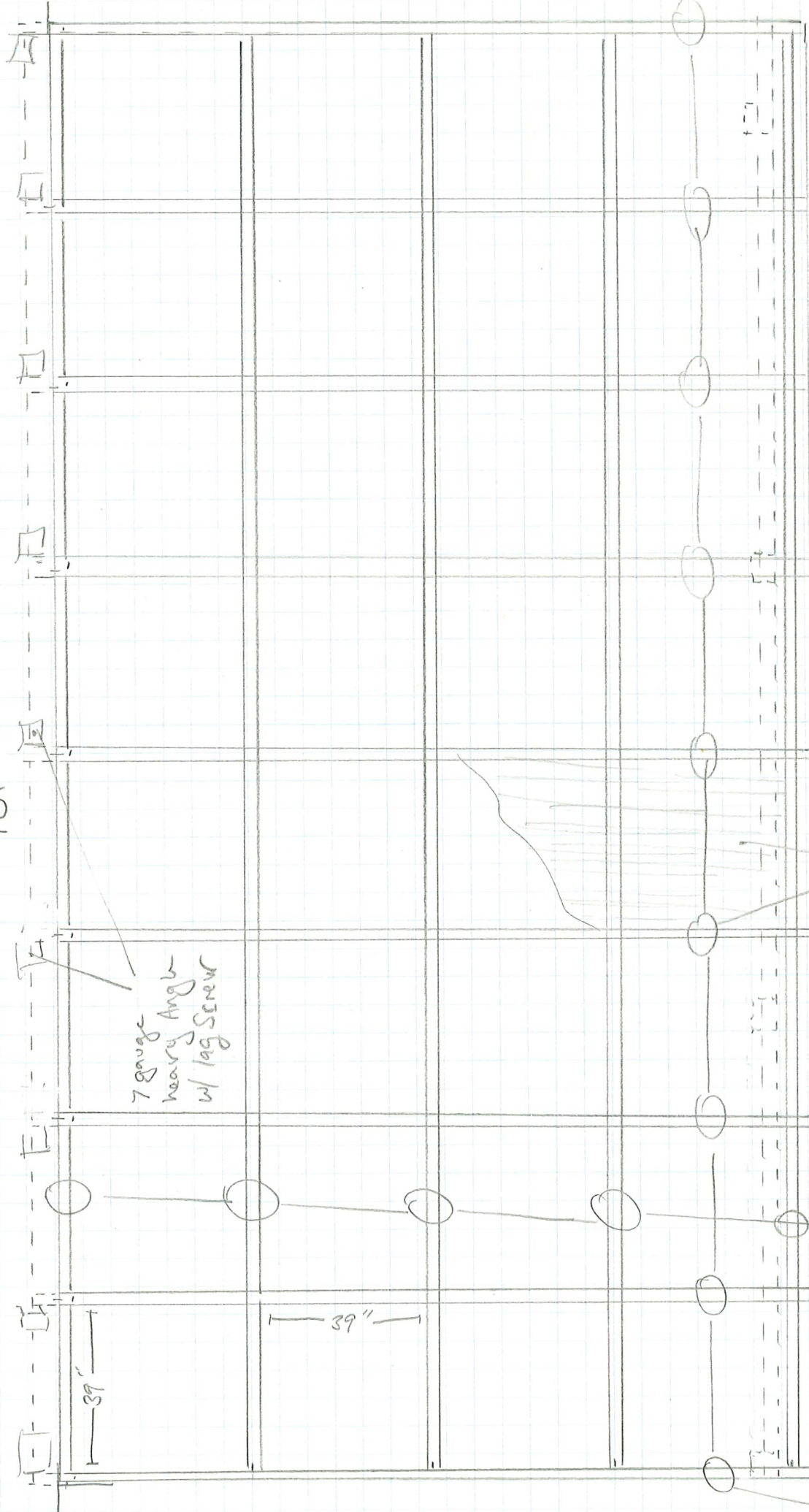
2' x 10"
Pressure
treated
plank

1 1/2" x 8"
Carrying
Bolt

1' x 2' purlin



TOP



7 gauge
heavy Angl
w/ lag screw

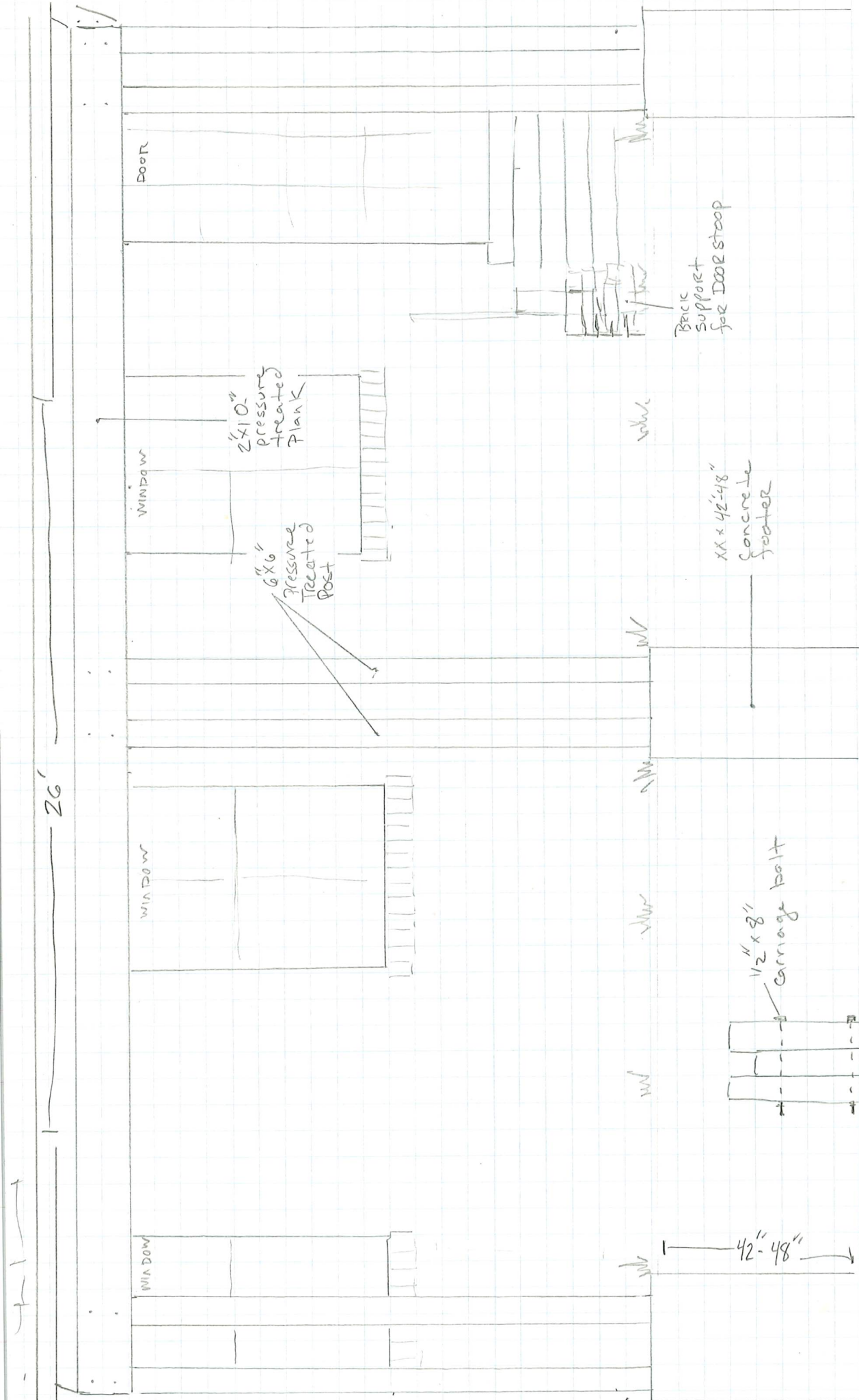
39"

Aluminum base connector w/ Polycarbonate Cap

10mm twin wall Polylgal Polycarbonate sheet 39" X 157"

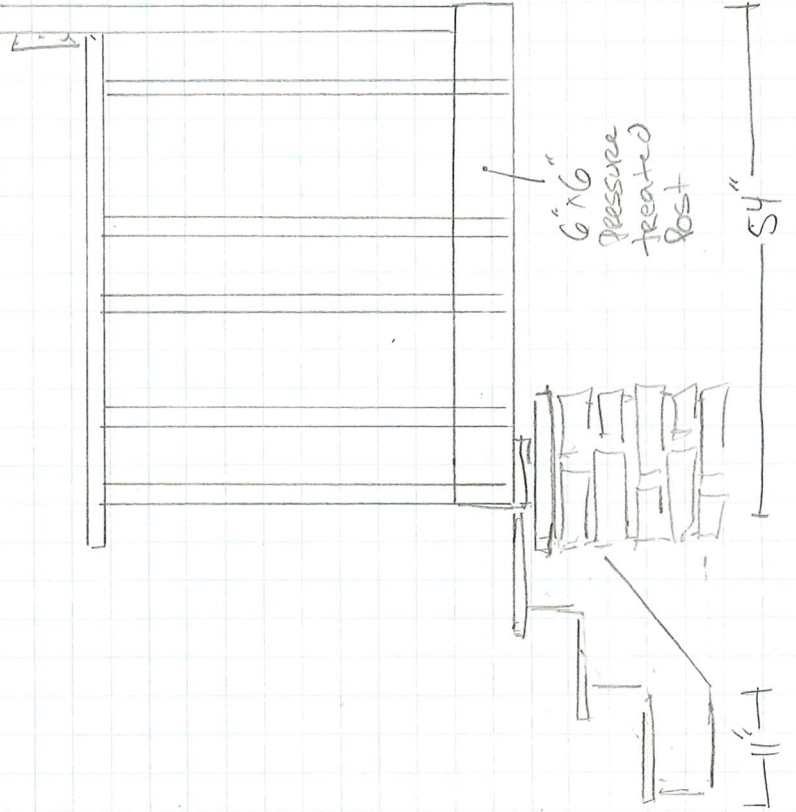
1"x2" purlin

2x10"
PRESSURE
treated
Plank



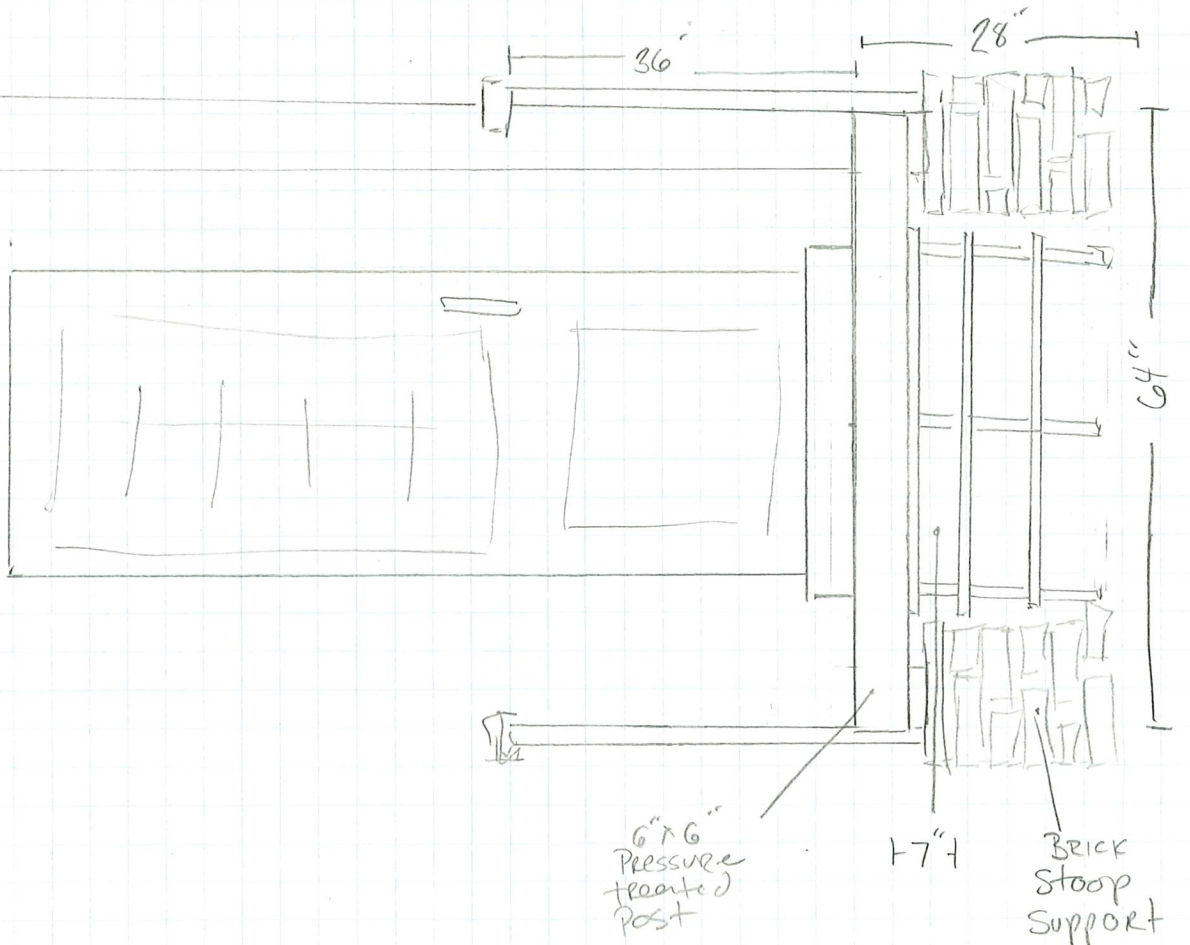
FRONT

BACK DOOR
SIDE



3" x 6"
POST
for
COVERED
PORCH

BACK DOOR
FRONT



6" x 6"
Pressure
treated
post

17"

BRICK
STOOP
SUPPORT

Aireal view: Porch will be approx. 4.5' from the north property line and approx. 12' from the south property line.

