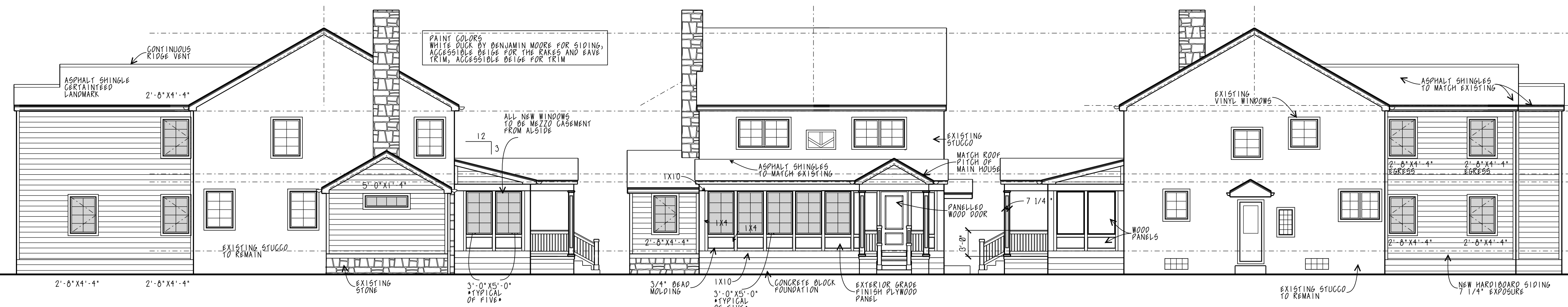


ASBUILT
WEST ELEVATION
SCALE: 1/8" = 1'-0"

ASBUILT
SOUTH ELEVATION
SCALE: 1/8" = 1'-0"

ASBUILT
EAST ELEVATION
SCALE: 1/8" = 1'-0"



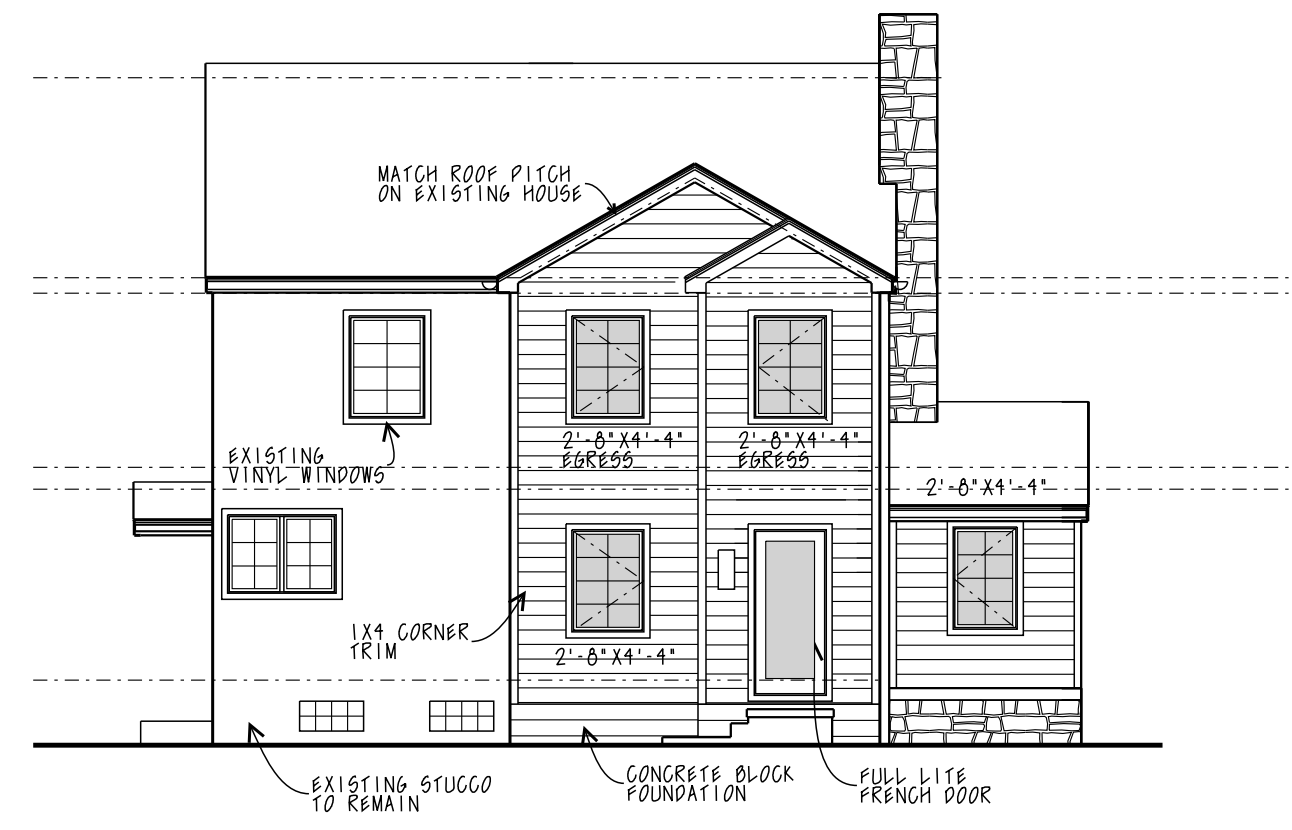
PROPOSED
WEST ELEVATION
SCALE: 1/8" = 1'-0"

PROPOSED
SOUTH ELEVATION
SCALE: 1/8" = 1'-0"

PROPOSED
EAST ELEVATION
SCALE: 1/8" = 1'-0"



ASBUILT
NORTH ELEVATION
SCALE: 1/8" = 1'-0"



PROPOSED
NORTH ELEVATION
SCALE: 1/8" = 1'-0"