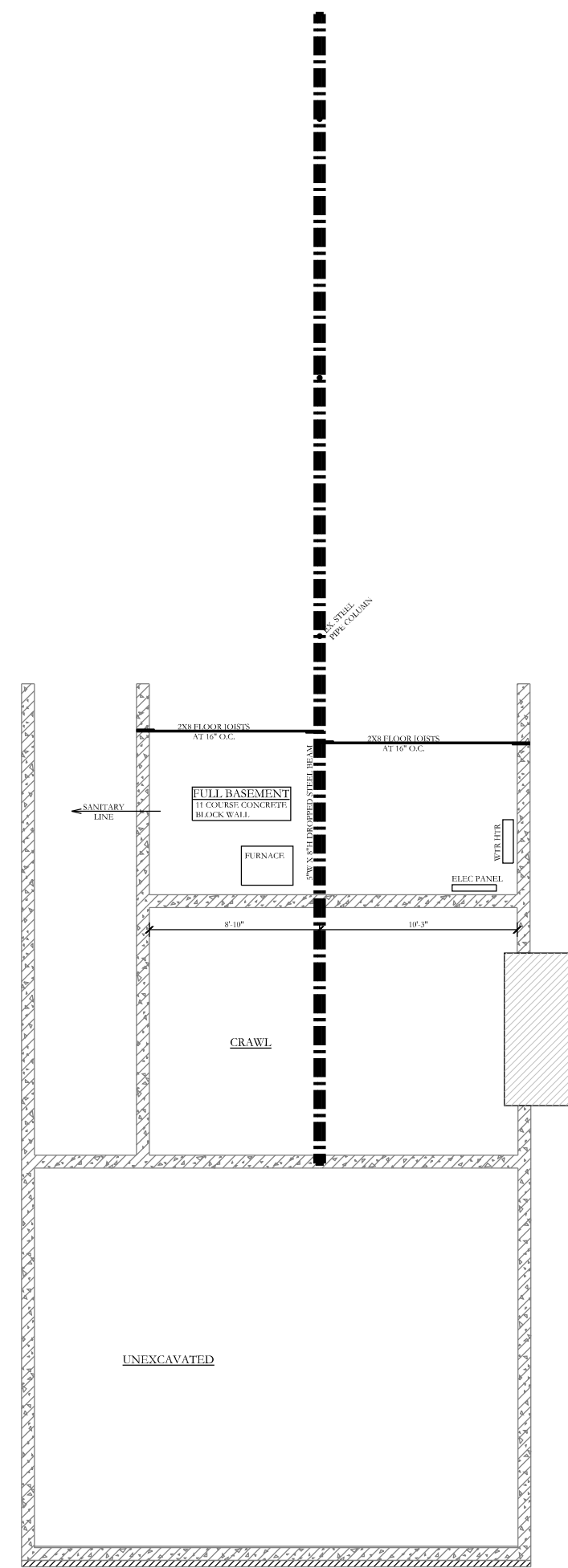


THE HERMANN-CORY
RESIDENCE
481 N. PARKVIEW AVE.
BEXLEY, OHIO 43209

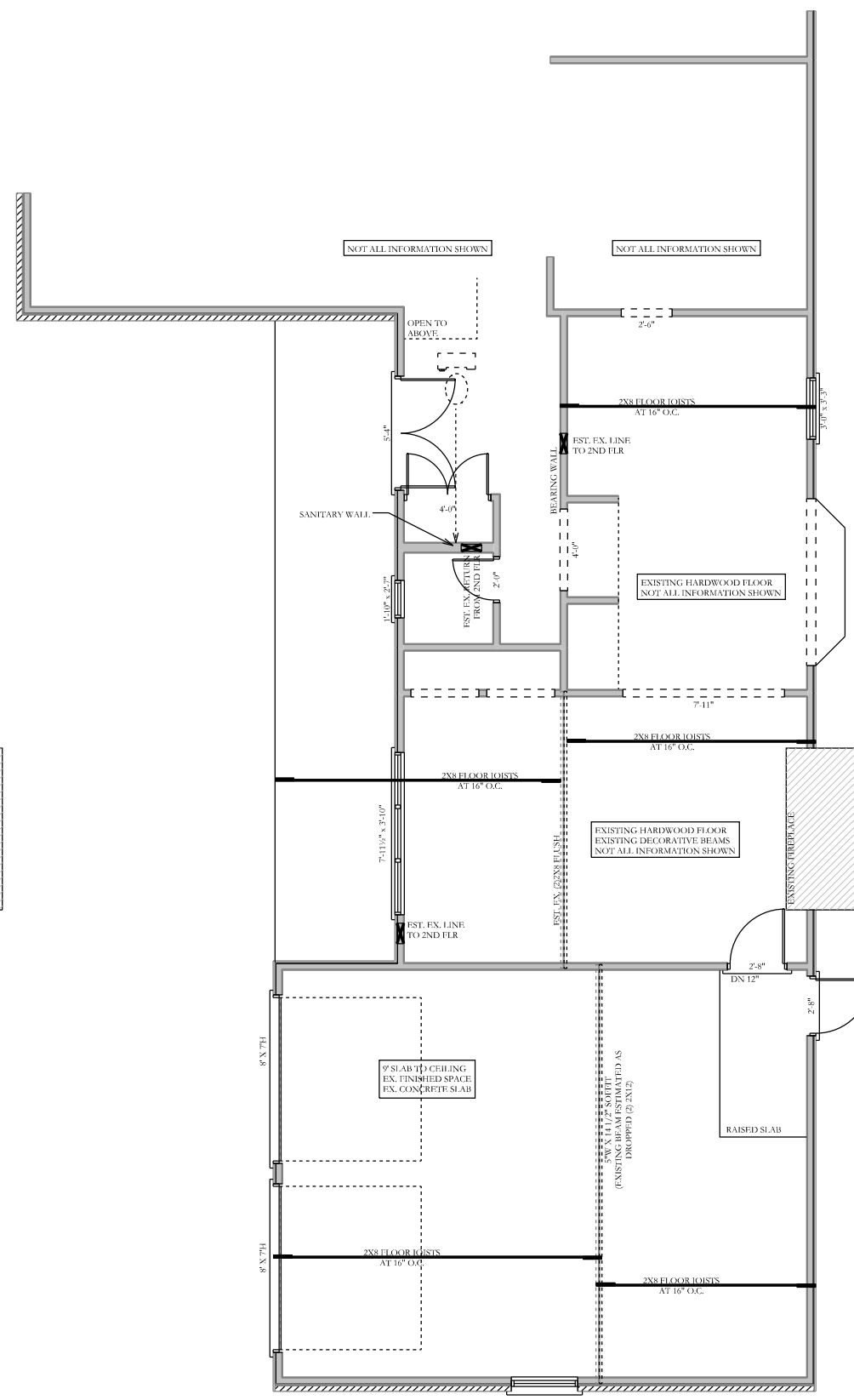
JOB NUMBER:
RA0123

JAMEE PARISH
Architecture & Design

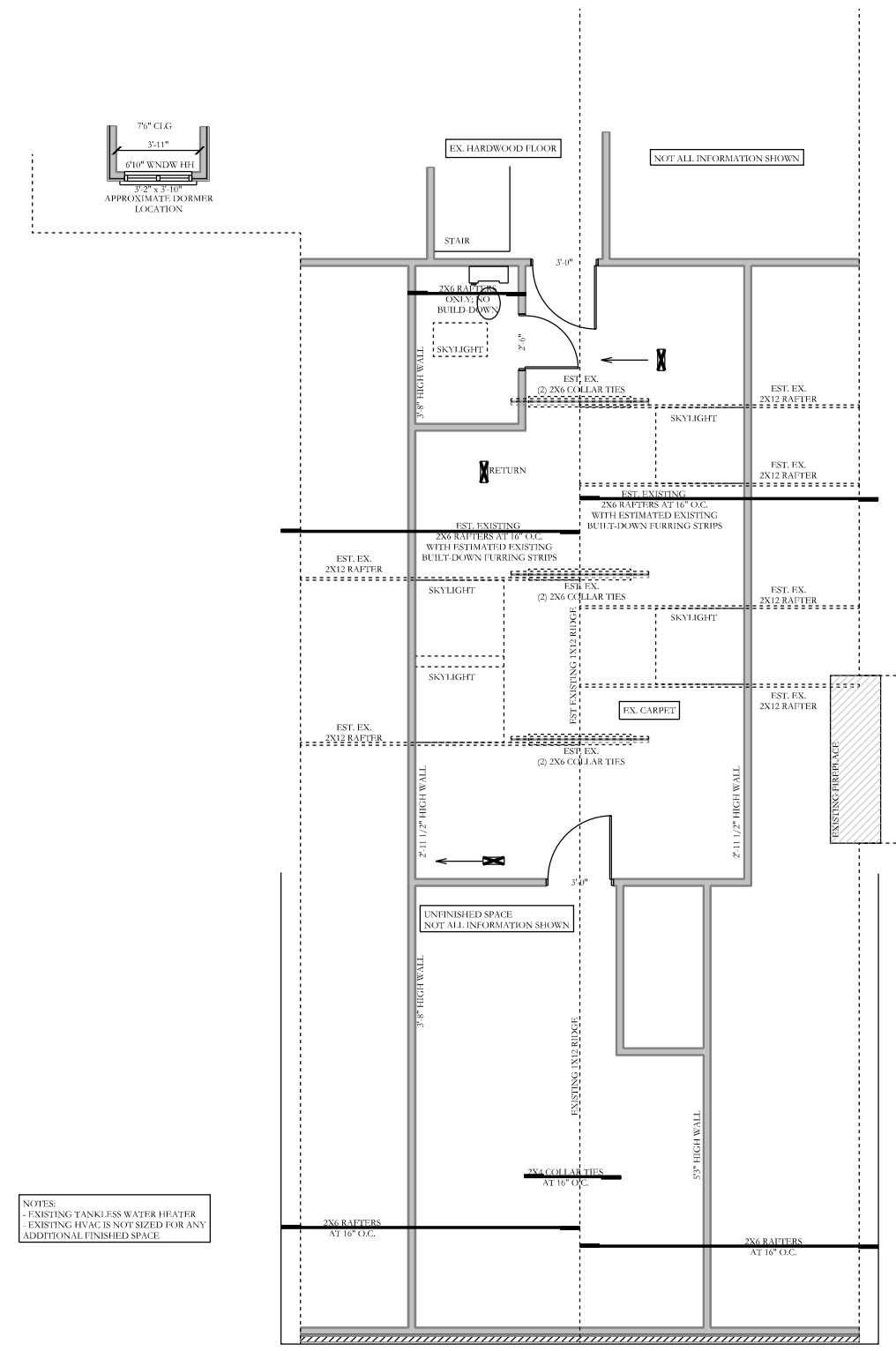
162 E. NORTH BROADWAY ST. COLUMBUS, OHIO 43214
614-404-7092 / JAMEE@JAMEEPARISH.COM
WWW.JAMEEPARISH.COM



EXISTING FOUNDATION PLAN
SCALE: 1/8"=1'-0"



EXISTING FIRST FLOOR PLAN
SCALE: 1/8"=1'-0"



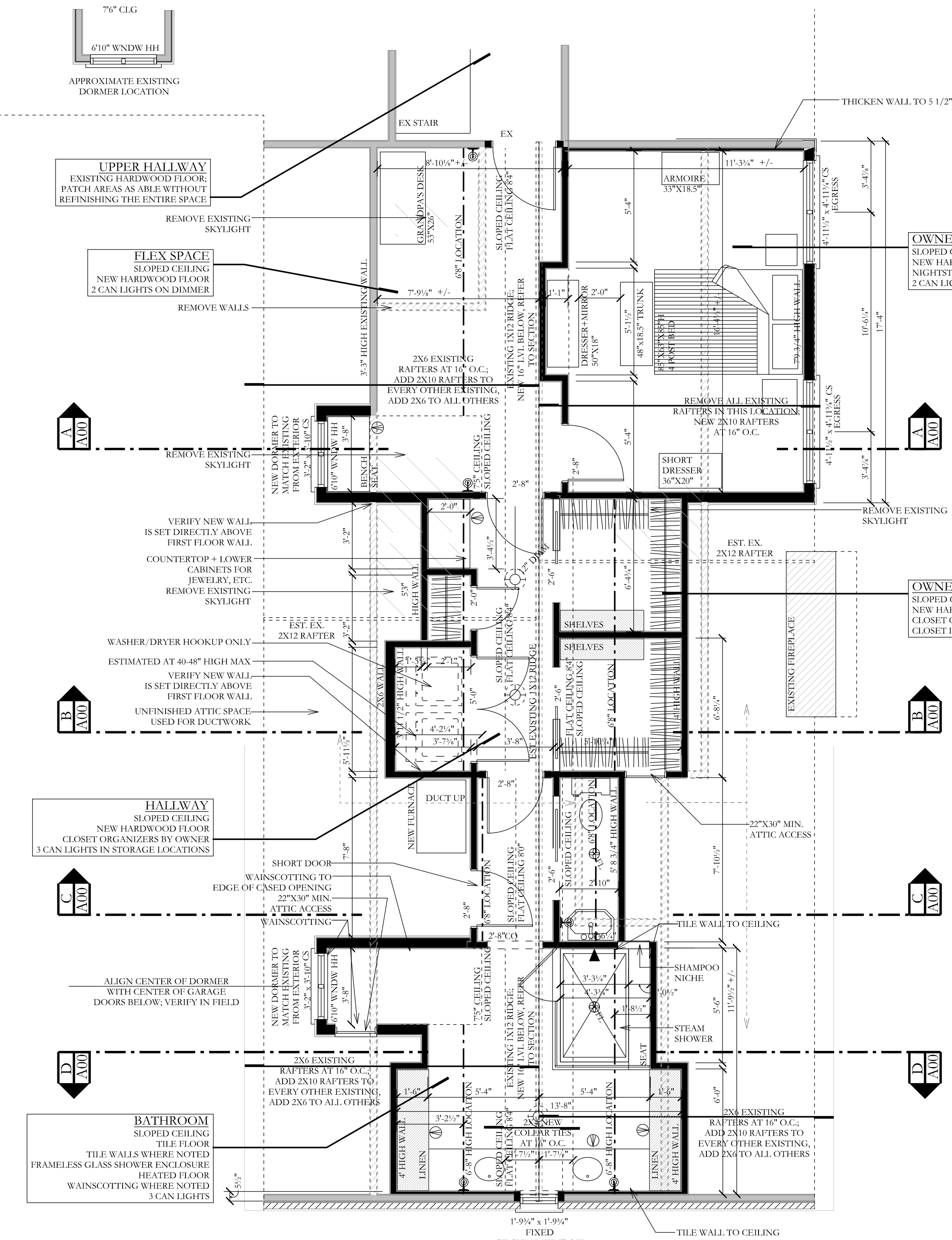
EXISTING SECOND FLOOR PLAN
SCALE: 1/8"=1'-0"

- Preliminary Designs
- Preliminary Construction Documents
- Bidding Documents
- Construction Documents
- Revisions

This Drawing And This Design Are
The Copyrighted Property Of
Jamee Parish Architects And
May Not Be Reproduced, Altered,
Or Otherwise Used In Any Manner
Without The Written Consent Of
Jamee Parish Architects, LLC

JAMEE M. PARISH, AIA, NCARB
LICENSE #: 0914884, EXP. 12.31.24

PRELIMINARY - NOT FOR CONSTRUCTION



NEW SECOND FLOOR PLAN

SCALE: 1/4"=1'-0"

PLAN NOTES:
 "EX" = EXISTING
 "EST" = ESTIMATED
 "CO" = CASSED OPENING
 [Symbol] = EXISTING WALL
 [Symbol] = REMOVED WALL
 [Symbol] = NEW WALL
 [Symbol] = OPERABLE CABINET DOOR

STRUCTURAL:
 - 7'6" EXISTING CEILING, MAIN HOUSE
 - REMOVE EXISTING COLLAR TIES; REPLACE WITH NEW AS NOTED
 - ADD ADDITIONAL RAFTER FRAMING AS NOTED

CARPENTRY:
 - 3 1/4" EXISTING CASING, NEW TO MATCH
 - 4" EXISTING BASEBOARD, NEW TO MATCH

FINISH:
 - REMOVE ALL EXISTING DRYWALL
 - REINSULATE
 - REMOVE ALL EXISTING CARPET

WINDOWS+DOORS:
 - VINYL WINDOWS
 - "CS" = CASEMENT
 - "DH" = DOUBLE HUNG
 - "AW" = AWNING
 - "OP" = OPERABLE PANEL
 - "X" = FIXED PANEL

MECHANICAL, ELECTRICAL, + PLUMBING:
 - REMOVE EXISTING REGISTERS IN THIS SPACE; NEW LINES FROM NEW EQUIPMENT ROOM TO SUPPLY ALL NEW FINISHED SPACE
 - EXISTING TANKLESS WATER HEATER

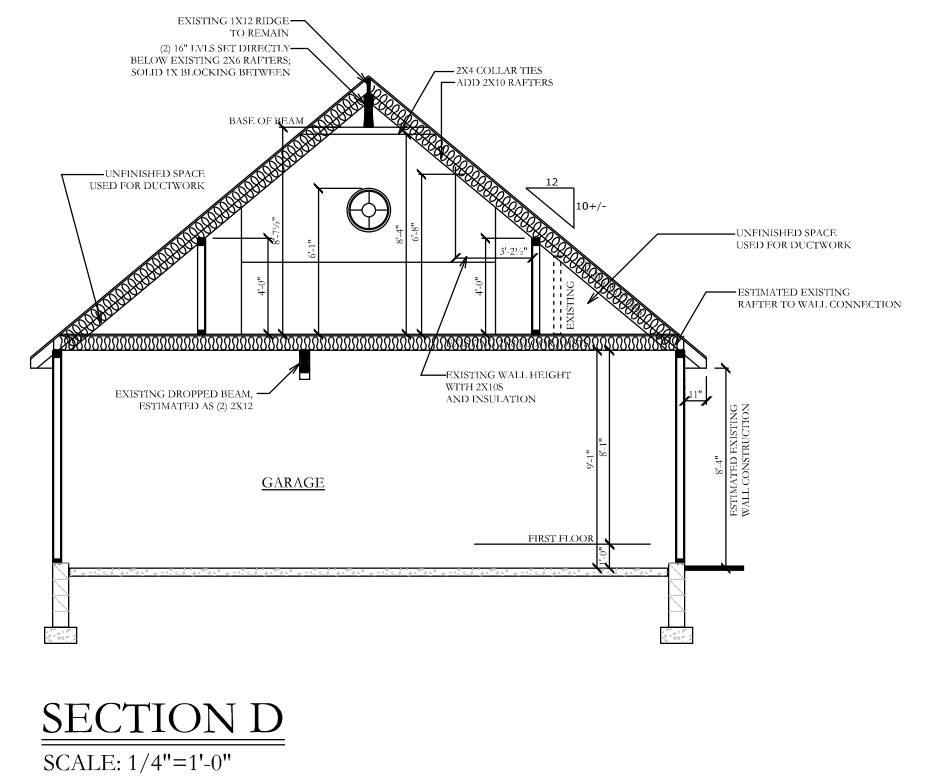
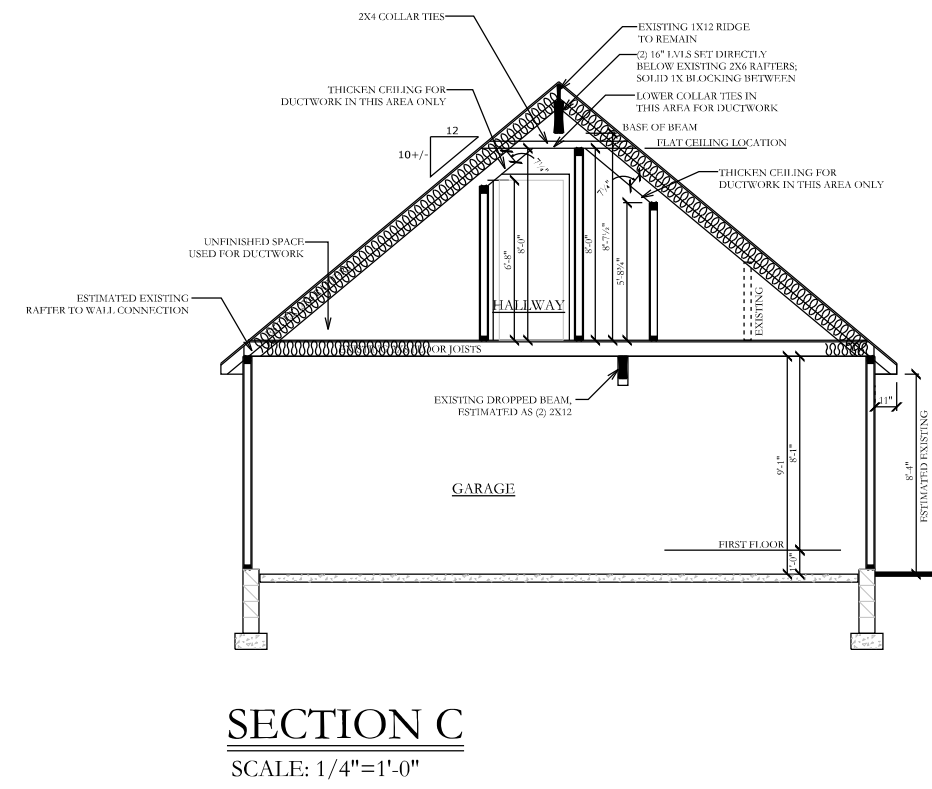
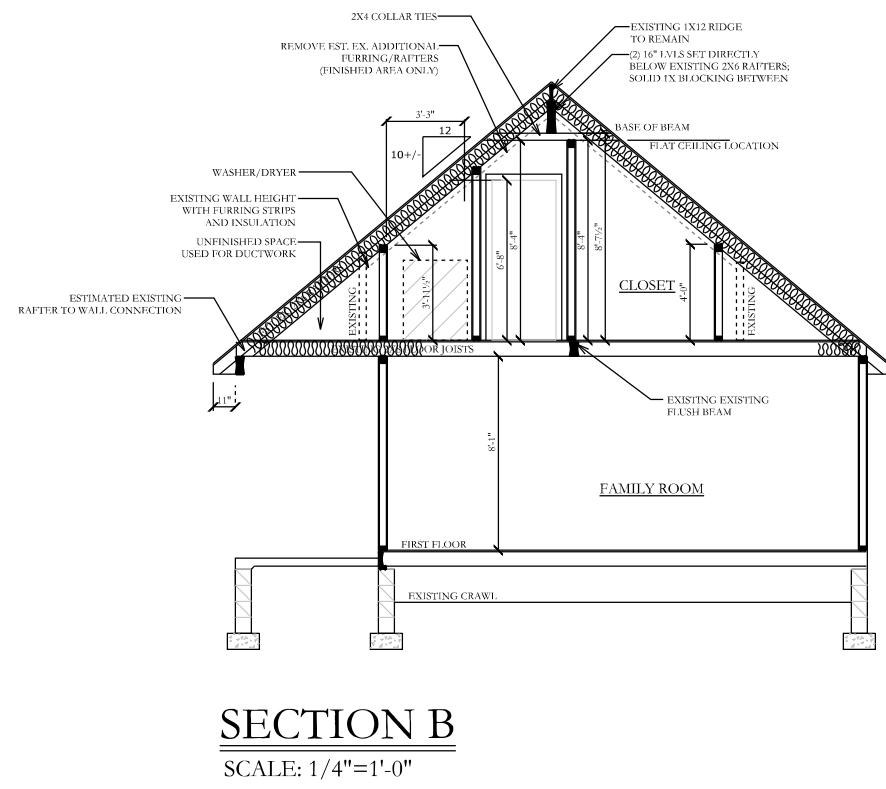
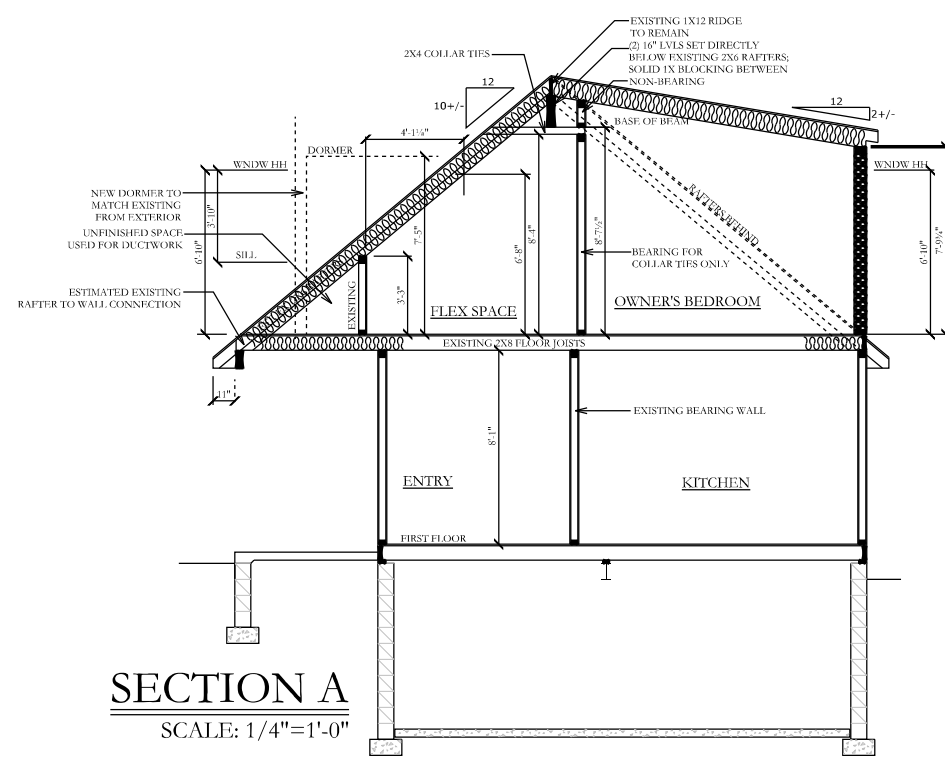
VERIFY ALL FIELD CONDITIONS AND NOTIFY ARCHITECT OF ANY DISCREPANCIES BETWEEN CONTRACT DOCUMENTS AND EXISTING CONDITIONS BEFORE PROCEEDING WITH WORK

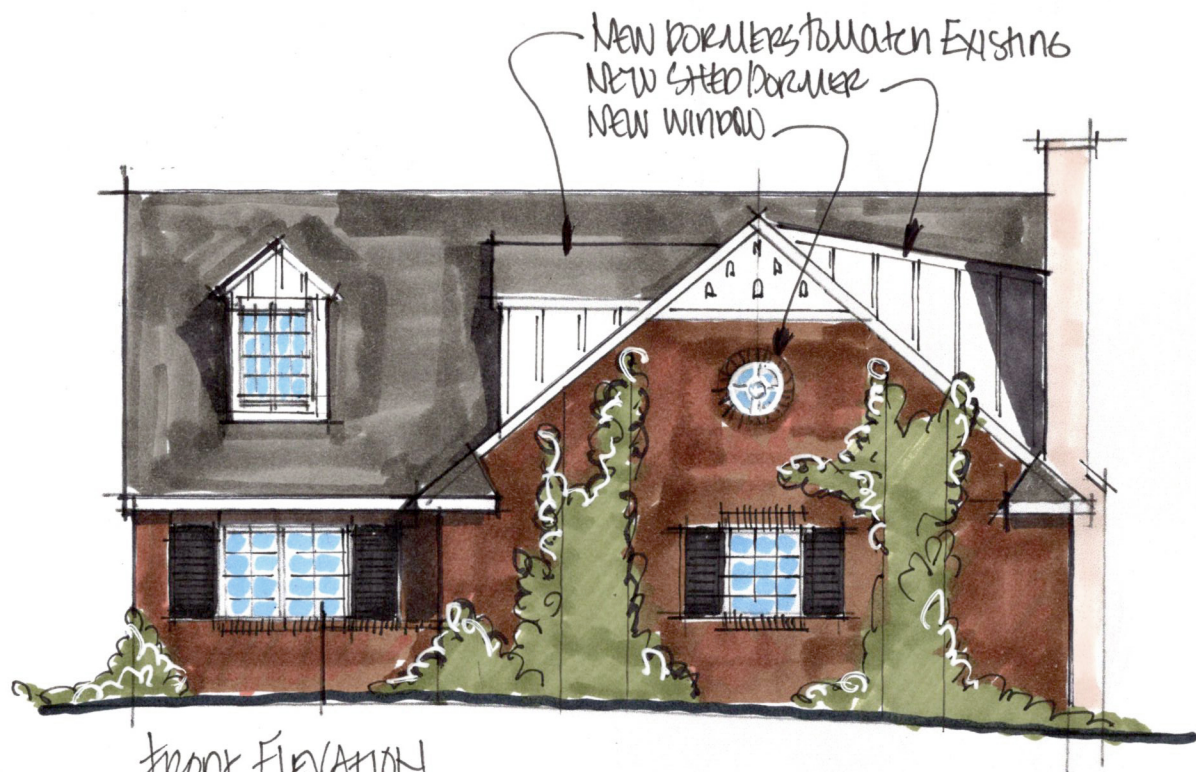
- 03.12.24 [Symbol] Preliminary Designs
- [Symbol] Preliminary Construction Documents
- [Symbol] Bidding Documents
- [Symbol] Construction Documents
- [Symbol] Revisions

This Drawing And This Design Are The Copyrighted Property Of Jamee Parish Architects And May Not Be Reproduced, Altered, Or Otherwise Used In Any Manner Without The Written Consent Of Jamee Parish Architects, LLC

JAMEE M. PARISH, AIA, NCARB
LICENSE #: 0914884, EXP. 12.31.24

PRELIMINARY - NOT FOR CONSTRUCTION





Front Elevation
1/8" = 1'-0"



Right Elevation
1/8" = 1'-0"



Left Elevation
1/8" = 1'-0"

JAMEE PARISH
Architecture & Design