

**Franklin County
Auditor's Office
Auditor
Michael Stinziano**

Map Produced February 15, 2024

Planimetric Legend

Source: 2021 Aerial Photography

- Edge of Pavement
- Roadway Centerlines
- Railroad Centerlines
- Building Footprints
- Building Under Construction
- Creeks, Streams, Ditches
- Rivers & Ponds

Topographic Legend

Source: OSIP - 2019 LiDAR Collection

- Spot Elevation
- Index Contour
- Intermediate Contour

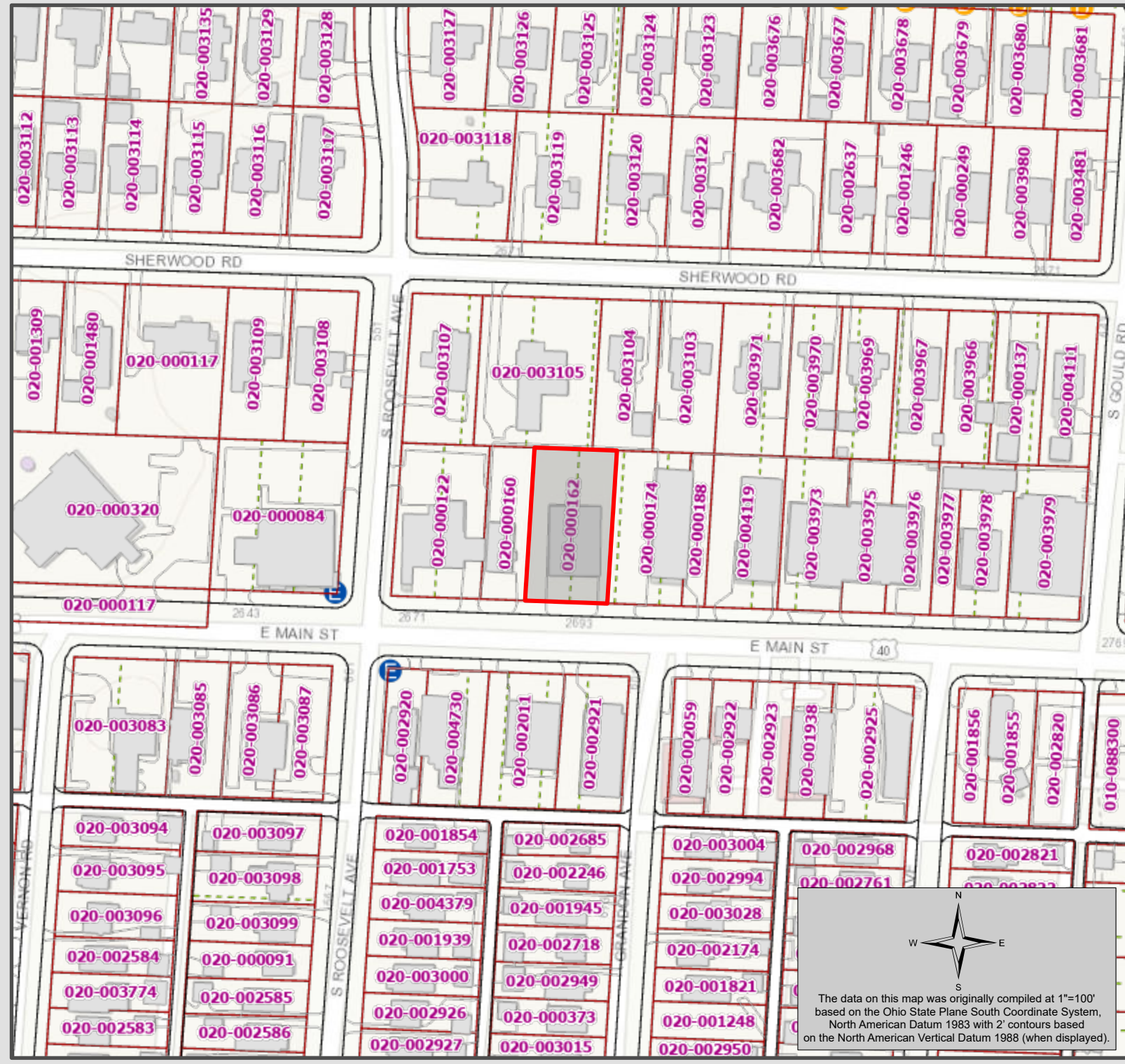
Appraisal Legend

Source: Franklin County Auditor & Engineer

- Parcel IDs
- Parcel Dimensions
- Lot Numbers
- Site Address
- Parcel Boundary
- Subdivision Boundary
- Condominium Boundary
- County Boundary
- City or Village Boundary
- Tax District Boundary
- School District Boundary
- Zip Code Boundary

The information on this web site is prepared from the real property inventory maintained by the Franklin County Auditor's Office. Users of this data are notified that the primary information source should be consulted for verification of the information contained on this site. The county and vendors assume no legal responsibilities for the information contained on this site. Please notify the Franklin County Auditor's Real Estate Division of any discrepancies.

For scaled maps, please visit the parcel viewer at <https://gis.franklincountyohio.gov/parcelviewer>



The data on this map was originally compiled at 1"=100' based on the Ohio State Plane South Coordinate System, North American Datum 1983 with 2' contours based on the North American Vertical Datum 1988 (when displayed).