



2200 E. MAIN STREET

City of Bexley - Architectural Review Board Meeting

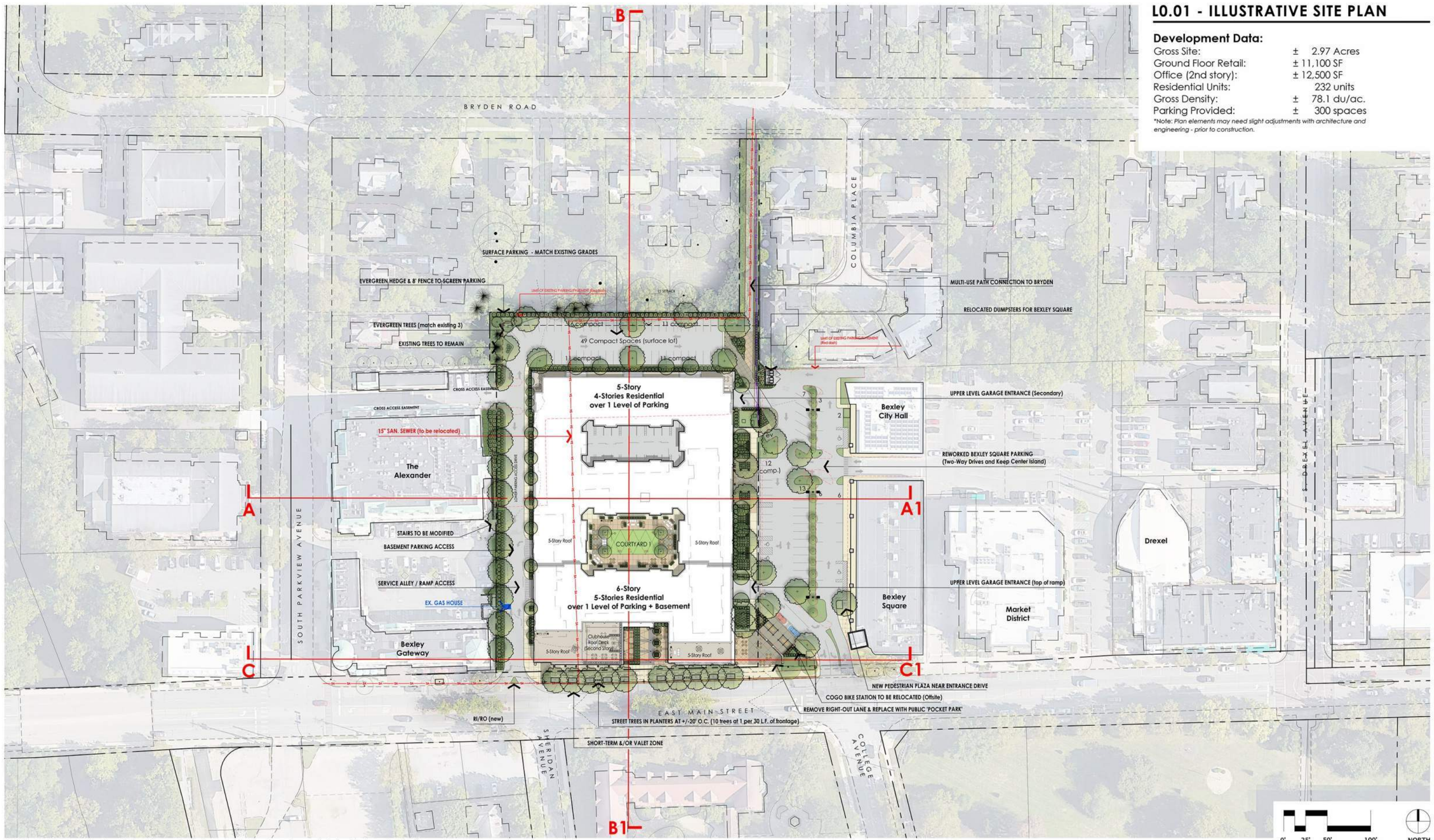
January 11, 2024

L0.01 - ILLUSTRATIVE SITE PLAN

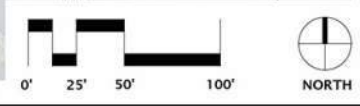
Development Data:

Gross Site:	± 2.97 Acres
Ground Floor Retail:	± 11,100 SF
Office (2nd story):	± 12,500 SF
Residential Units:	232 units
Gross Density:	± 78.1 du/ac.
Parking Provided:	± 300 spaces

*Note: Plan elements may need slight adjustments with architecture and engineering - prior to construction.



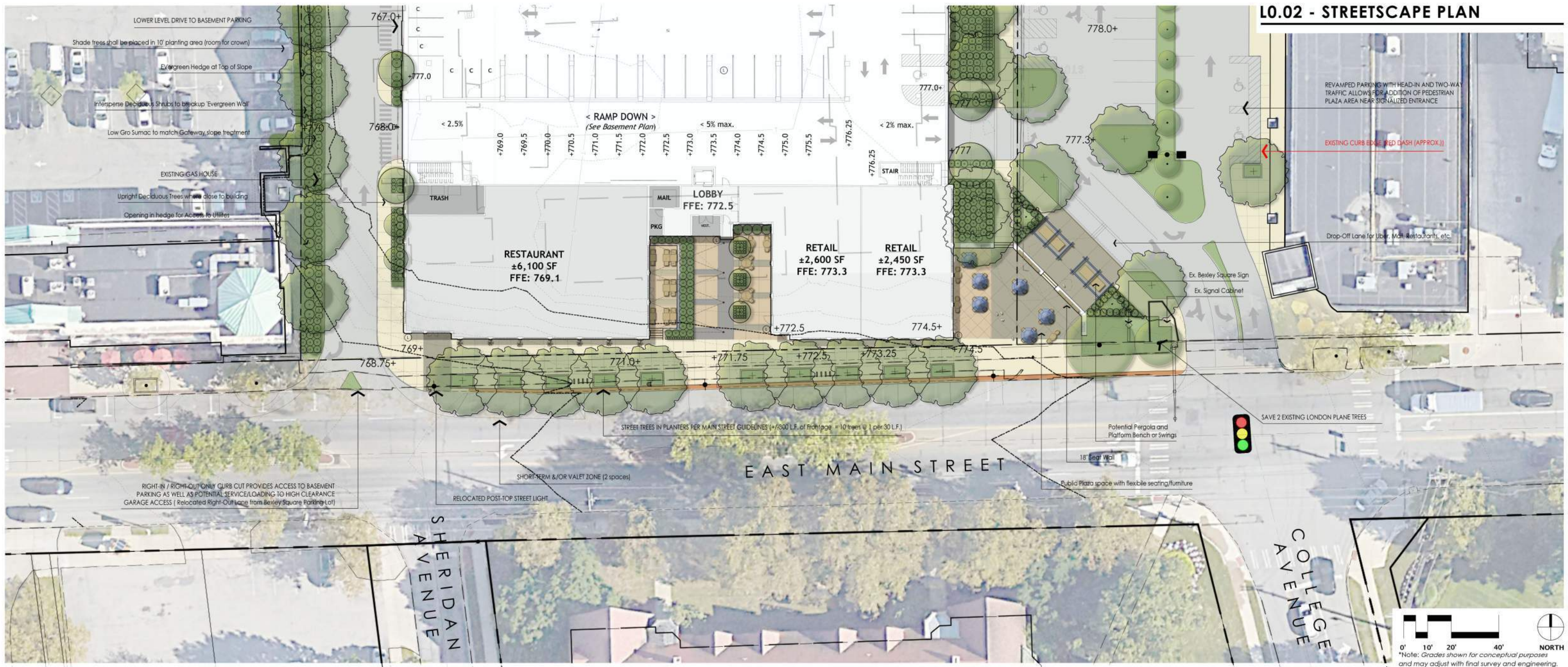
NOTE: This plan is Conceptual in nature. All dimensions and site layout are approximate and may change with final architecture and engineering.



SCHEMATIC DESIGN
2200 E. Main Street
 Bexley, OH
 July 13, 2023 (rev.: 8.10.23, 9.8.23, 10.6.23, 10.26.23 - ARB, 91.8.23, 11.22.23)



L0.02 - STREETScape PLAN



NOTE: This plan is Conceptual in nature. All dimensions and site layout are approximate and may change with final architecture and engineering.



NORTHEAST CORNER

01/04/2024



448 W Nationwide Blvd
Loft 100
Columbus, OH 43215

2200 E. MAIN STREET





NORTH ELEVATION

01/04/2024



448 W Nationwide Blvd
Loft 100
Columbus, OH 43215

2200 E. MAIN STREET





NORTH WEST CORNER

01/04/2024



448 W Nationwide Blvd
Loft 100
Columbus, OH 43215

2200 E. MAIN STREET





WEST ELEVATION

01/04/2024



448 W Nationwide Blvd
Loft 100
Columbus, OH 43215

2200 E. MAIN STREET





EAST ELEVATION

01/04/2024



448 W Nationwide Blvd
Loft 100
Columbus, OH 43215

2200 E. MAIN STREET





SOUTH ELEVATION

01/04/2024



448 W Nationwide Blvd
Loft 100
Columbus, OH 43215

2200 E. MAIN STREET





SOUTH ELEVATION

01/04/2024



448 W Nationwide Blvd
Loft 100
Columbus, OH 43215

2200 E. MAIN STREET





SOUTHWEST CORNER

01/04/2024



448 W Nationwide Blvd
Loft 100
Columbus, OH 43215

2200 E. MAIN STREET





448 W Nationwide Blvd
Loft 100
Columbus, OH 43215

2200 E. MAIN STREET





SOUTHEAST CORNER

01/04/2024



448 W Nationwide Blvd
Loft 100
Columbus, OH 43215

2200 E. MAIN STREET





448 W Nationwide Blvd
Loft 100
Columbus, OH 43215

2200 E. MAIN STREET





1 WEST ELEVATION

1" = 50'-0"



2 WEST ELEVATION

1" = 30'-0"



3 NORTH ELEVATION

1" = 30'-0"

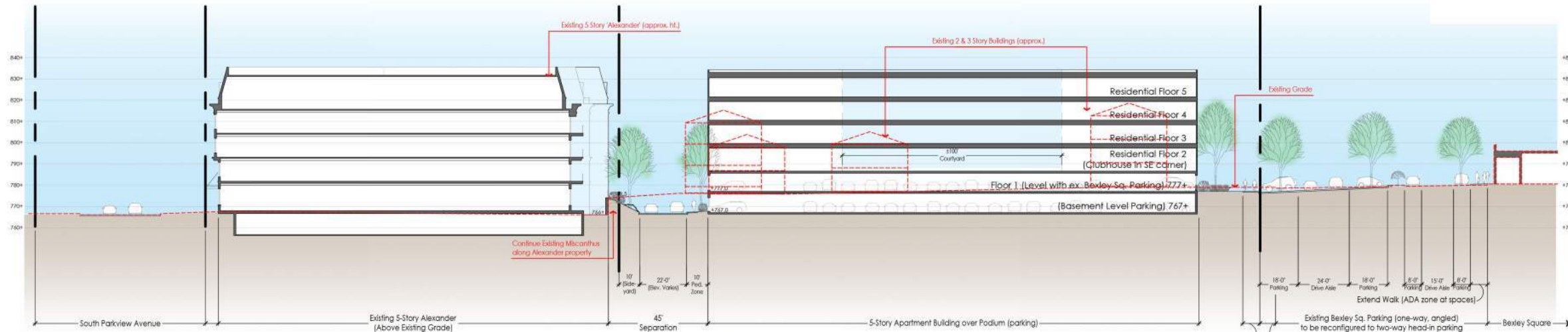


1 MAIN STREET ELEVATION
1" = 30'-0"

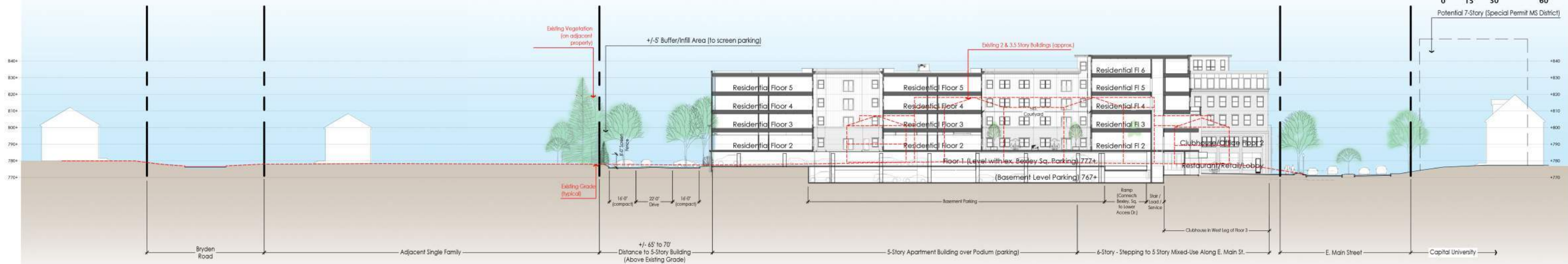


2 EAST ELEVATION
1" = 30'-0"

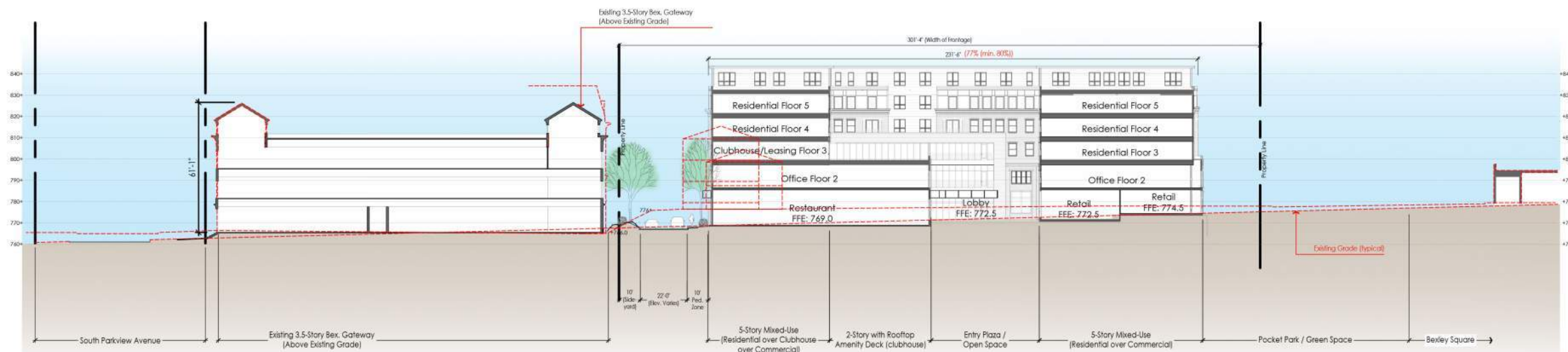




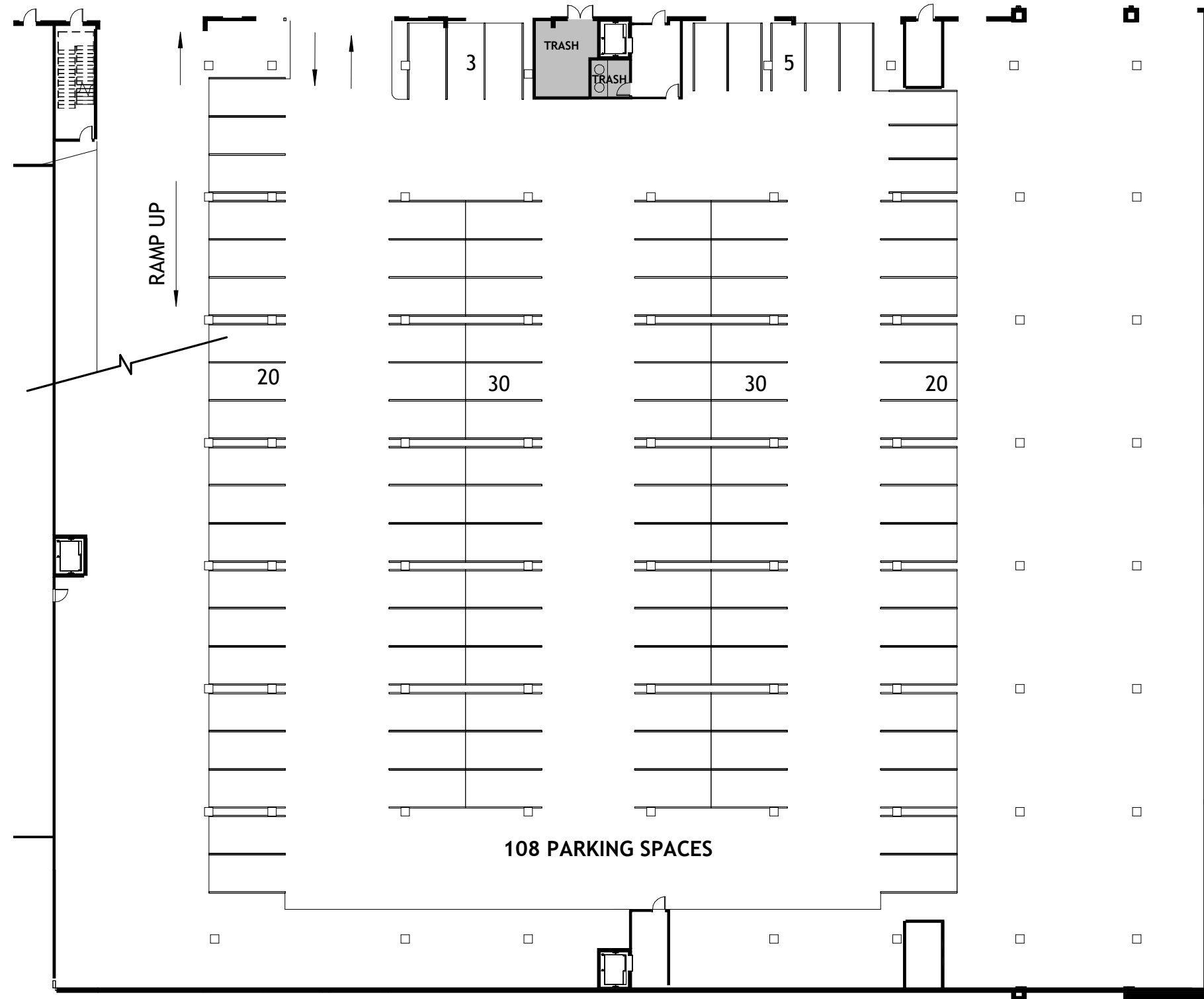
TYPICAL CROSS-SECTION A-A1 (Looking North Through Middle of the Site)



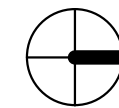
TYPICAL CROSS-SECTION B-B1 (Looking East Through Middle of the Site)



TYPICAL CROSS-SECTION C-C1 (Looking North Through East Main Street Frontage)



108 PARKING SPACES



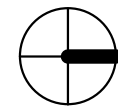
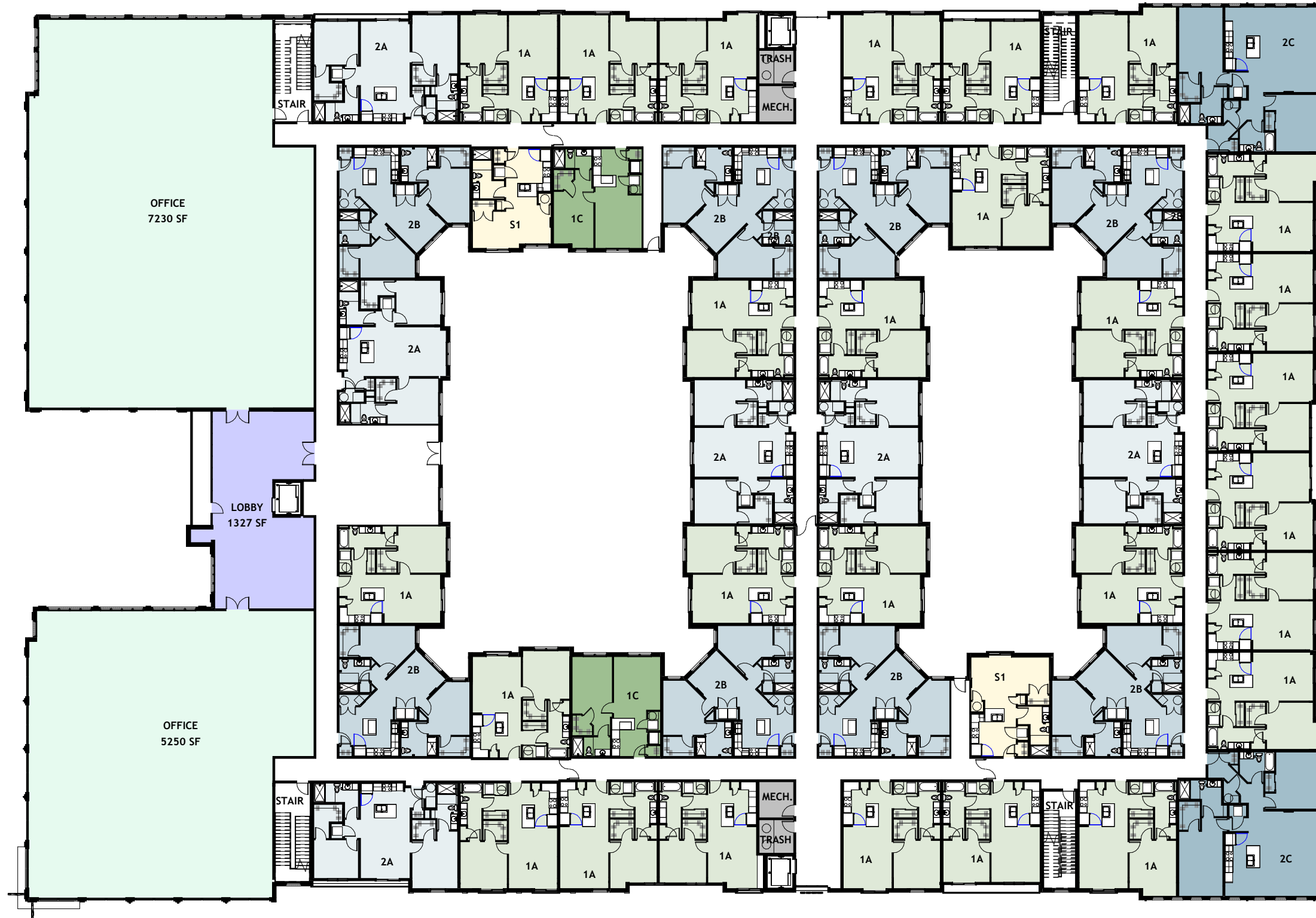
01/04/2024

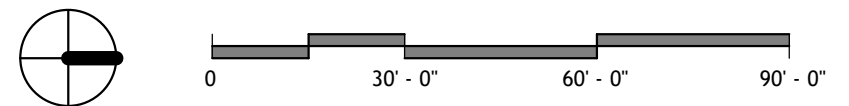
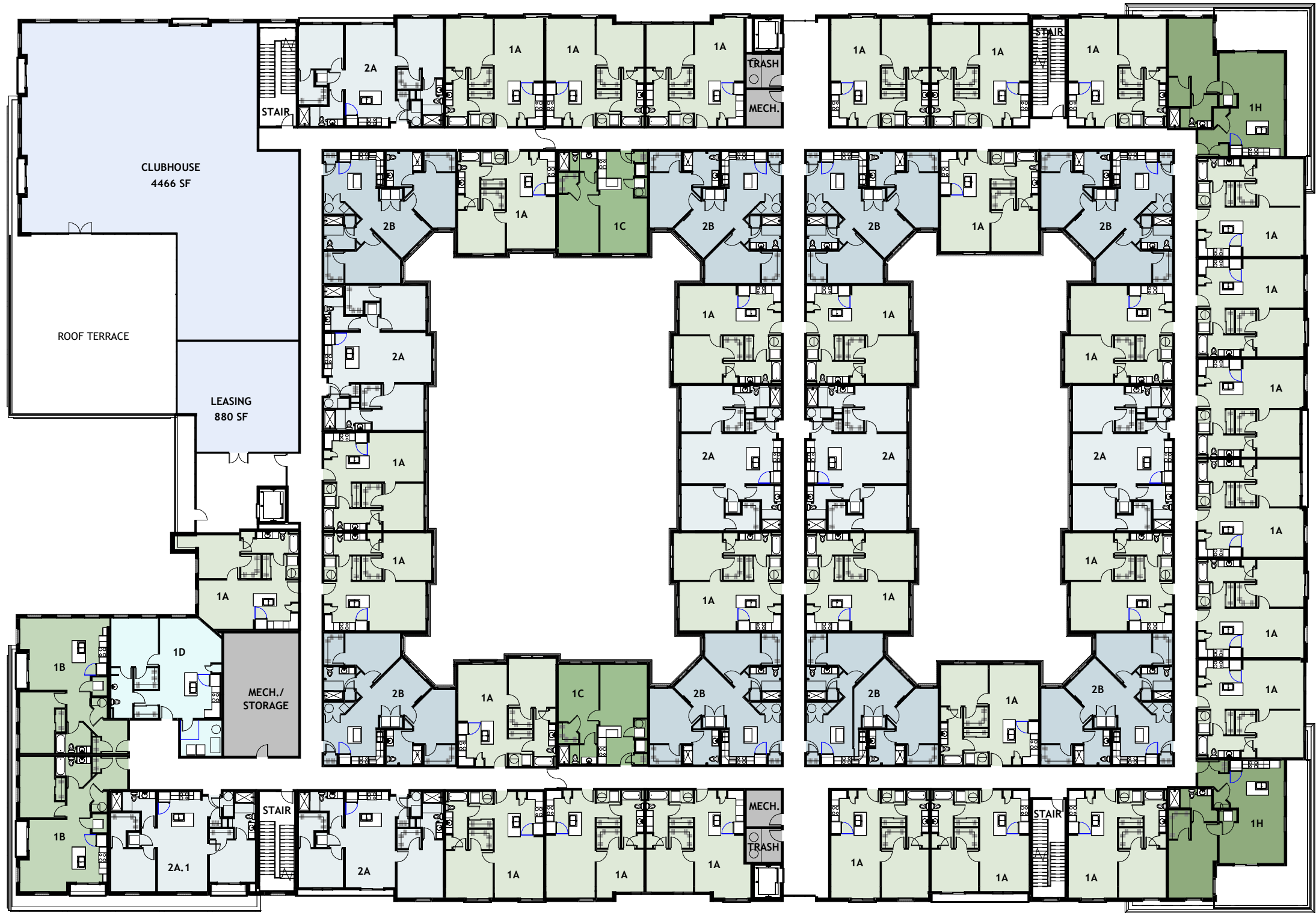


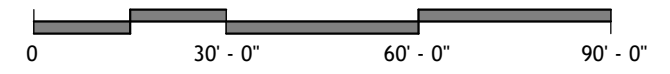
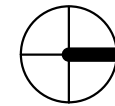
448 W Nationwide Blvd
Loft 100
Columbus, OH 43215

2200 E. MAIN STREET





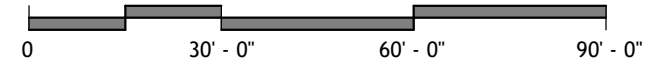
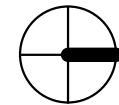




448 W Nationwide Blvd
Loft 100
Columbus, OH 43215

2200 E. MAIN STREET

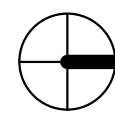
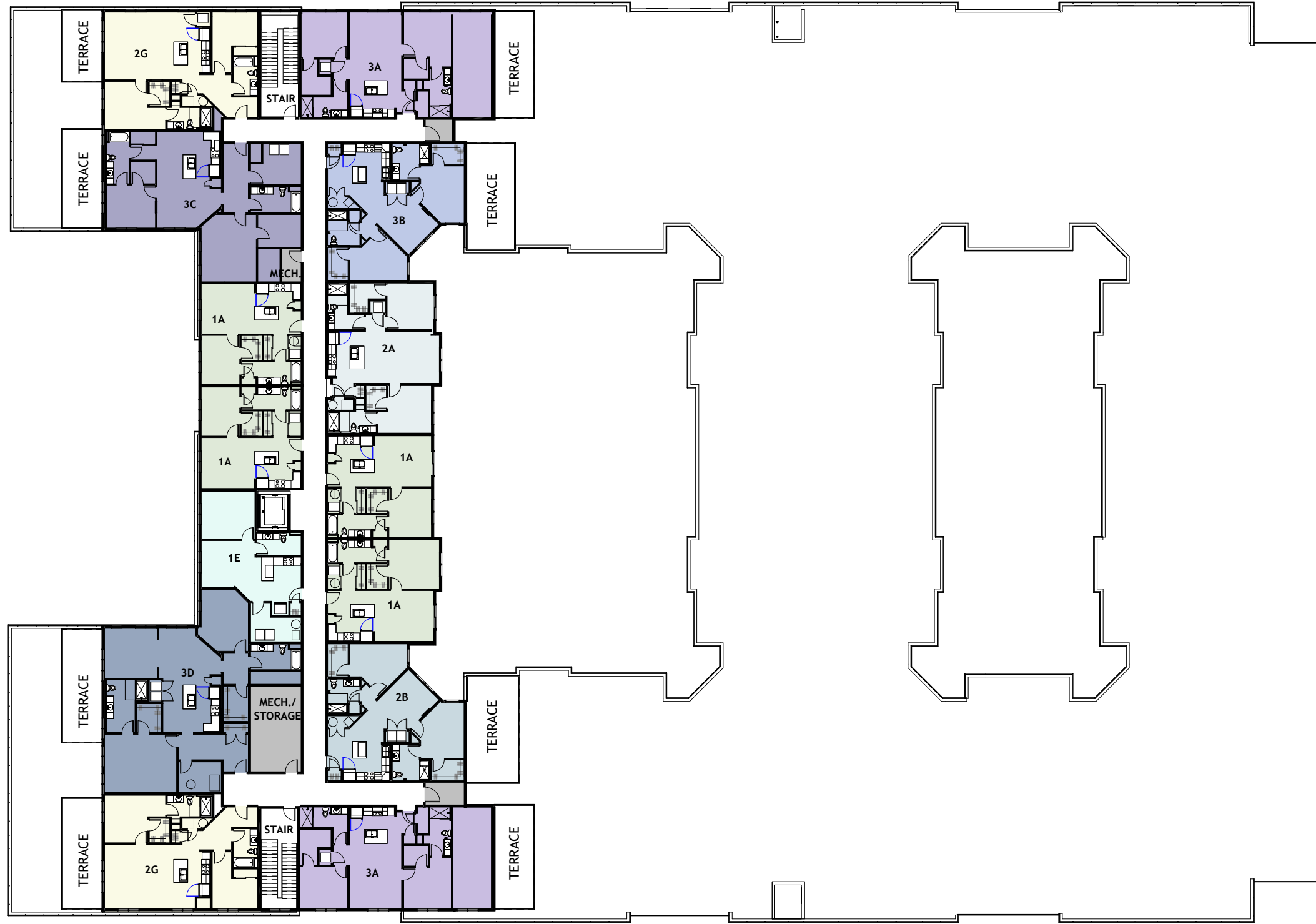




448 W Nationwide Blvd
Loft 100
Columbus, OH 43215

2200 E. MAIN STREET





448 W Nationwide Blvd
Loft 100
Columbus, OH 43215

2200 E. MAIN STREET

