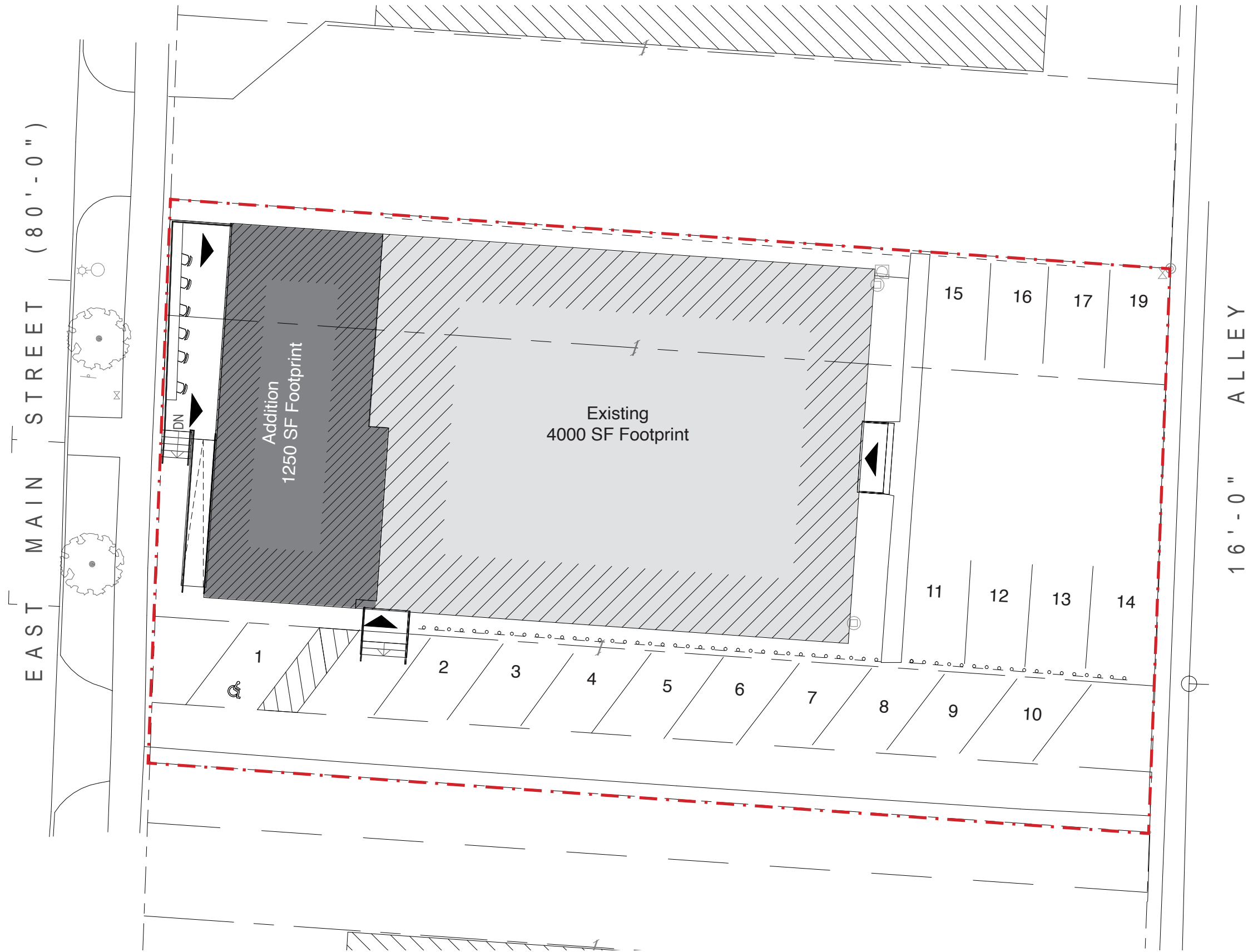


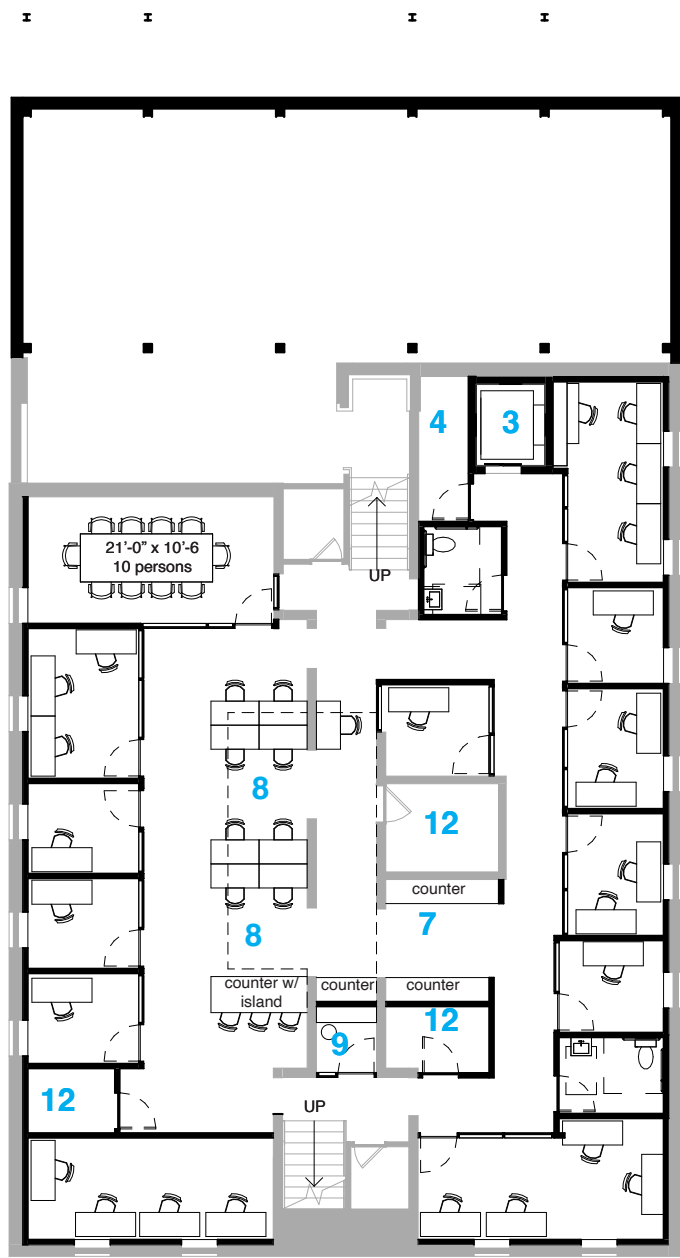
COHATCH BEXLEY
EXTERIOR DESIGN
04.13.2023
© Tim Lai ArchitecT



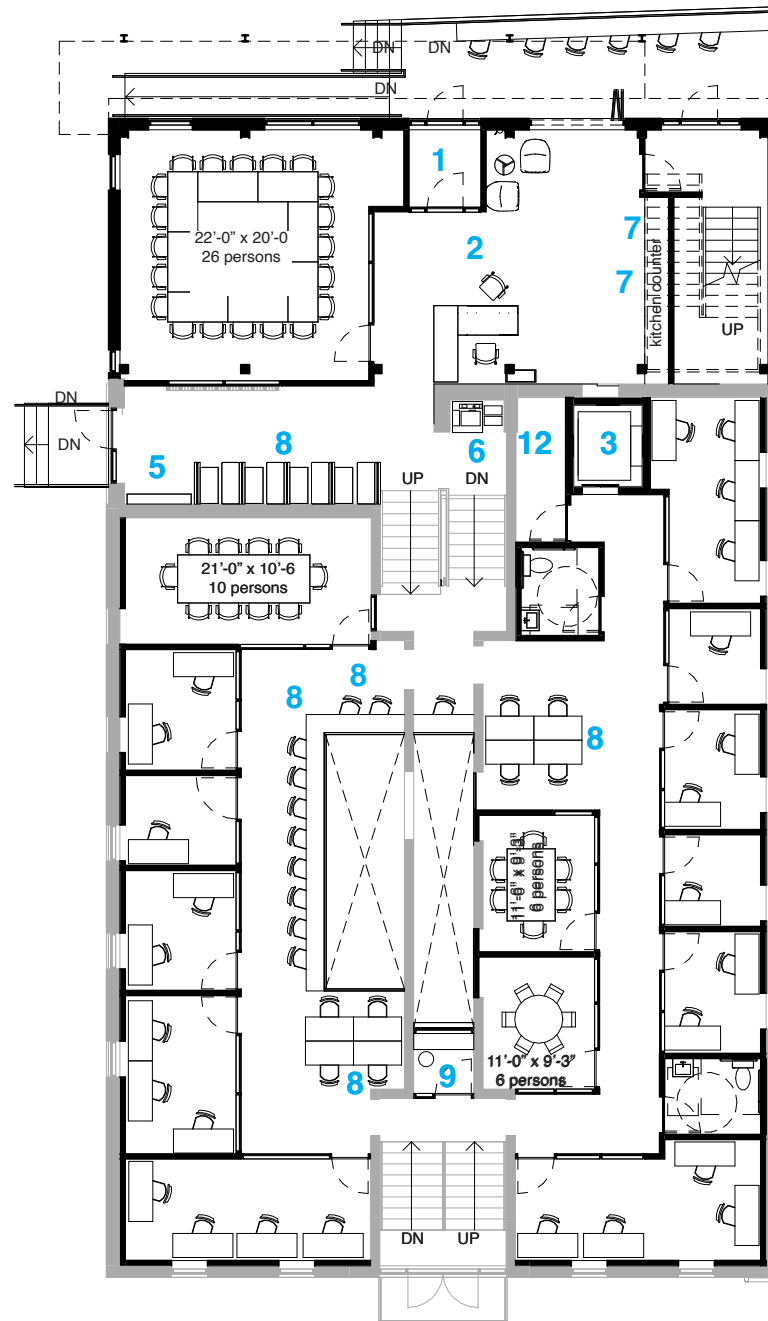
Site Plan

scale : 1/16" = 1'-0"

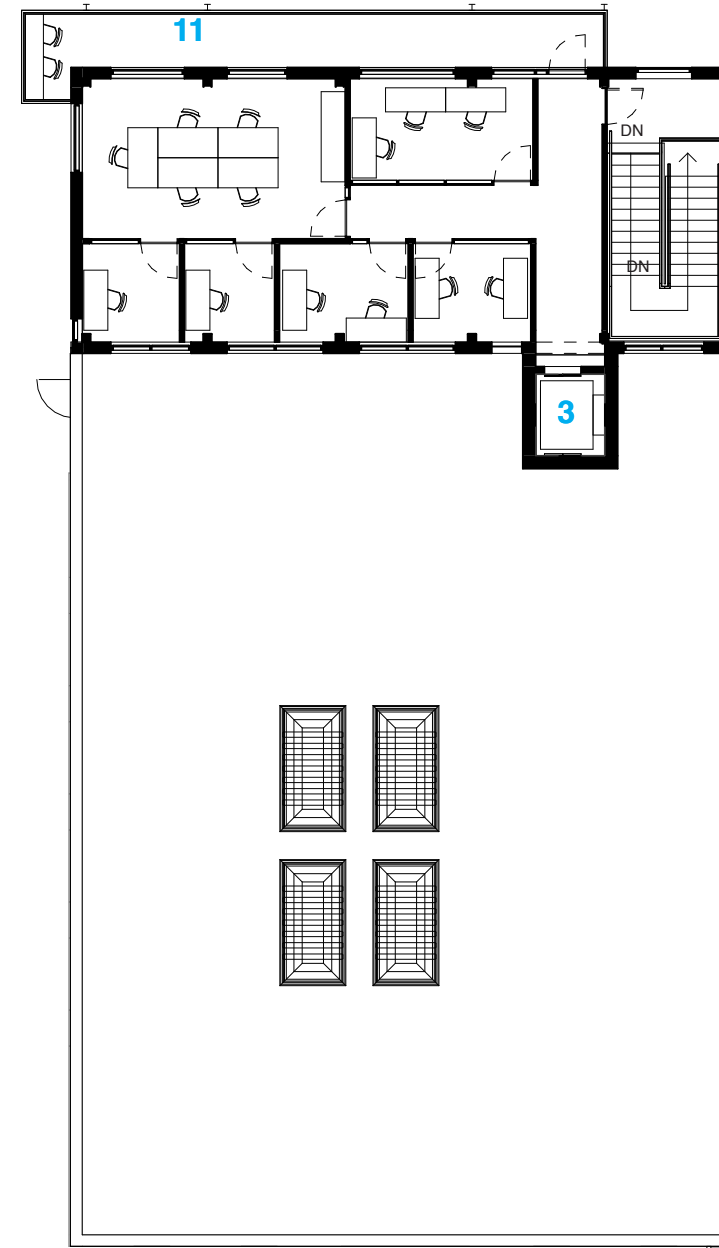




Basement 4000 SF



First Floor 5250 SF
Existing 4000 SF
Addition 1259 SF



Second Floor- 1300 SF

- Offices - Option 1**
- 10 Single
 - 8 2-person
 - 3 3-person
 - 6 4-person
 - 1 7-person Suite

- Key Plan**
- 1 Vestibule
 - 2 Lobby
 - 3 Elevator
 - 4 Elevator Machine Room
 - 5 Mail
 - 6 Print
 - 7 Kitchen
 - 8 Coworking
 - 9 Phone Booth
 - 10 Kitchen
 - 11 Balcony / Roof Deck
 - 12 Mech / Storage

Floor Plans

scale : 1/16" = 1'-0"





North Facade



West Facade



East Facade

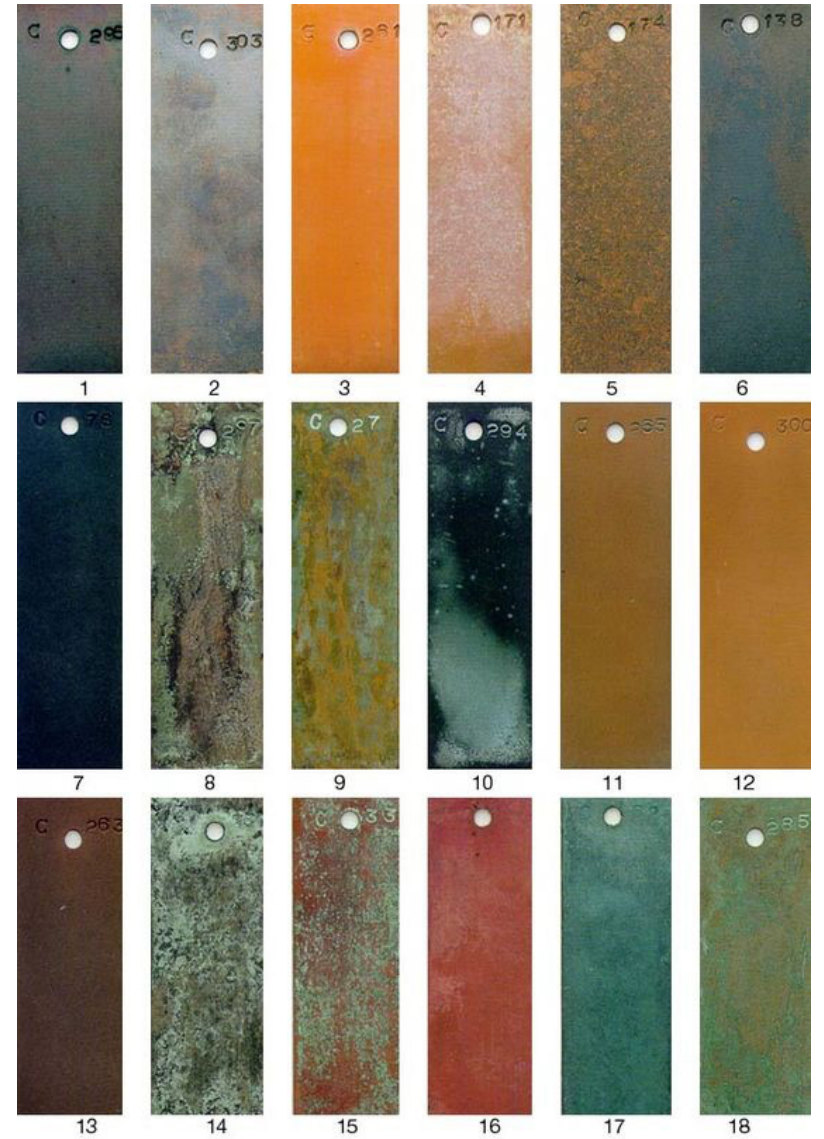
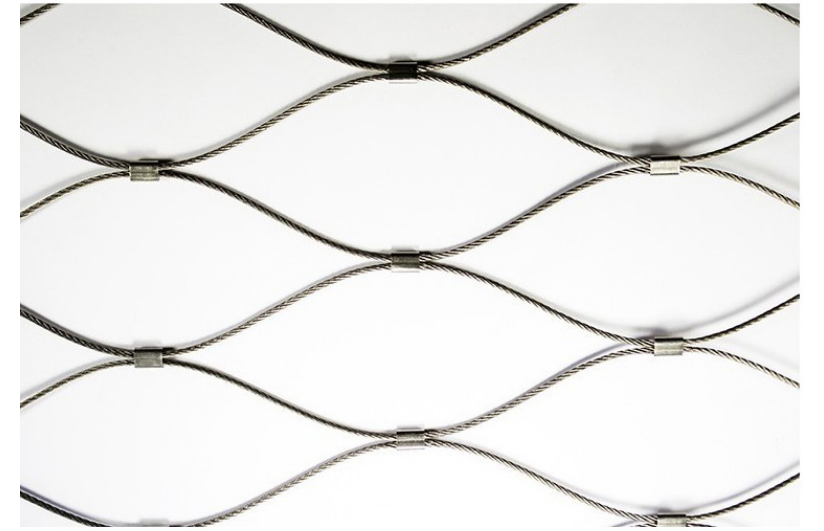
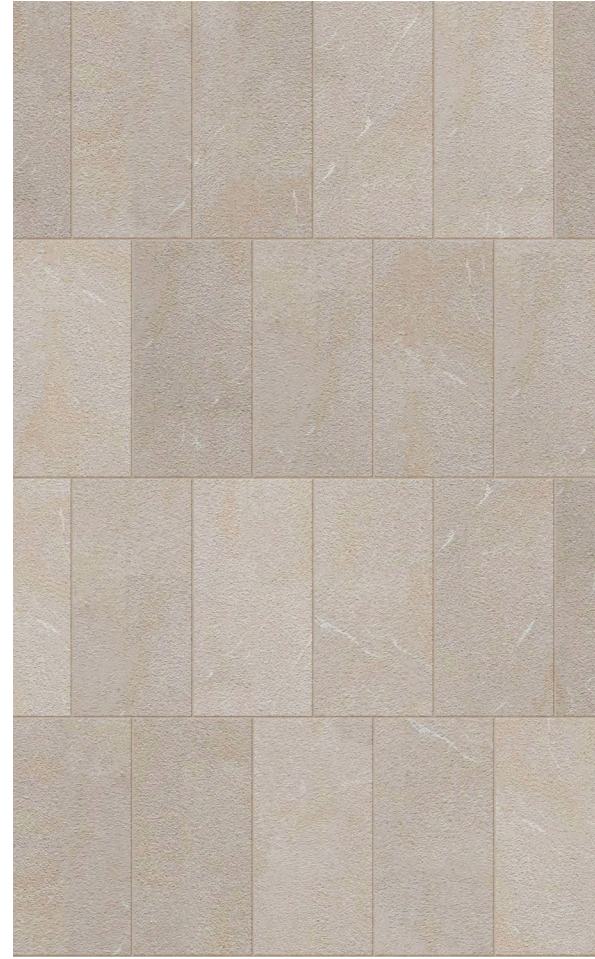


South Facade

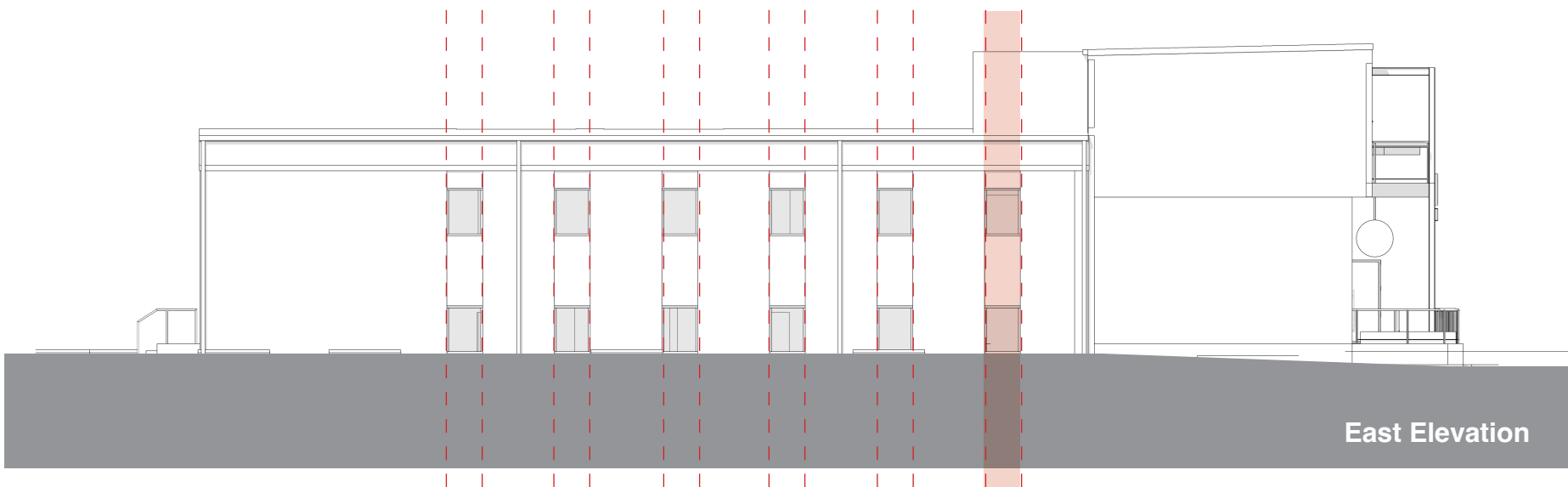
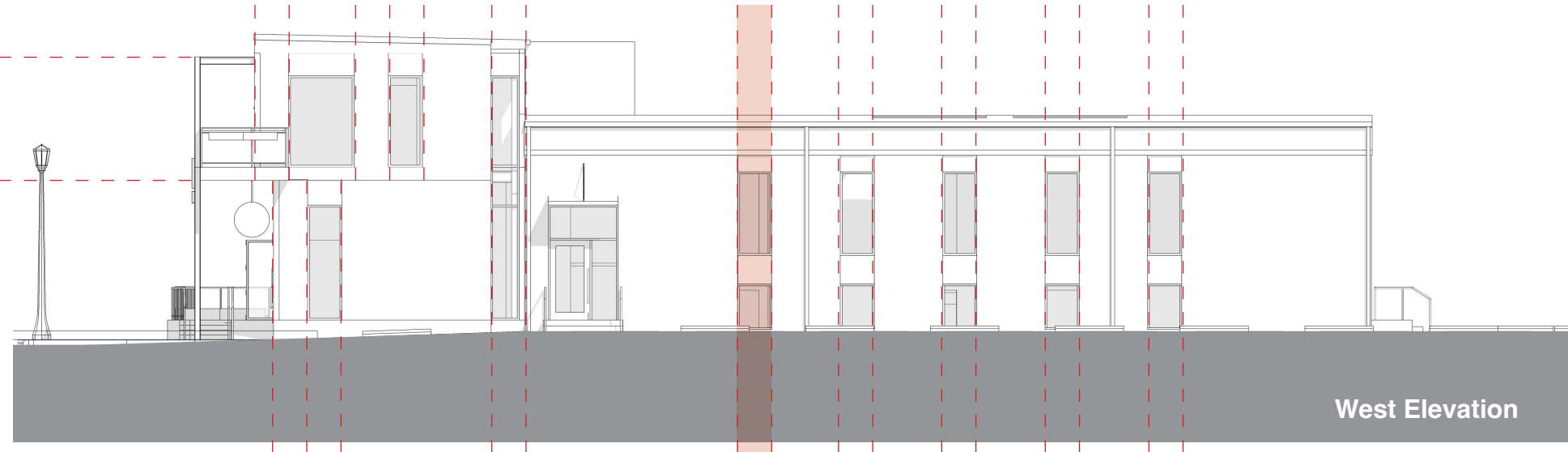
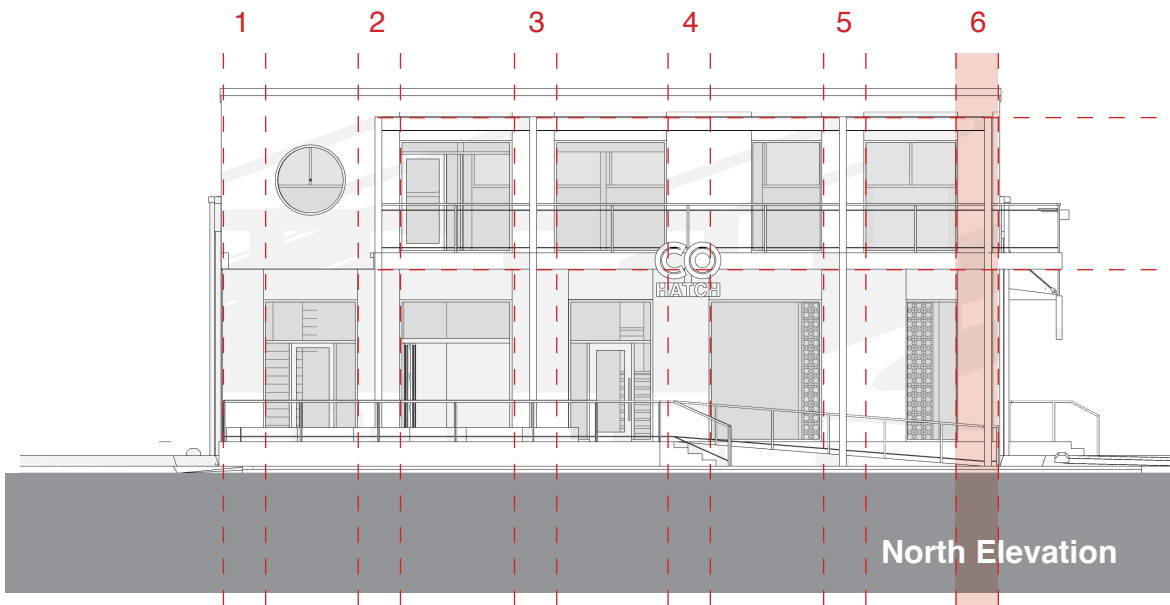
To create an addition structure that compliments the existing mid-century modern office building with a contemporary expression of limestone that embodies the coexistence of the past and present.

It improves the connection to the street by moving the front to the sidewalk. It activates it by a partially covered patio and a balcony that extends toward to downtown Bexley. It welcomes visitors to enter with a covered entrance ramp and steps.

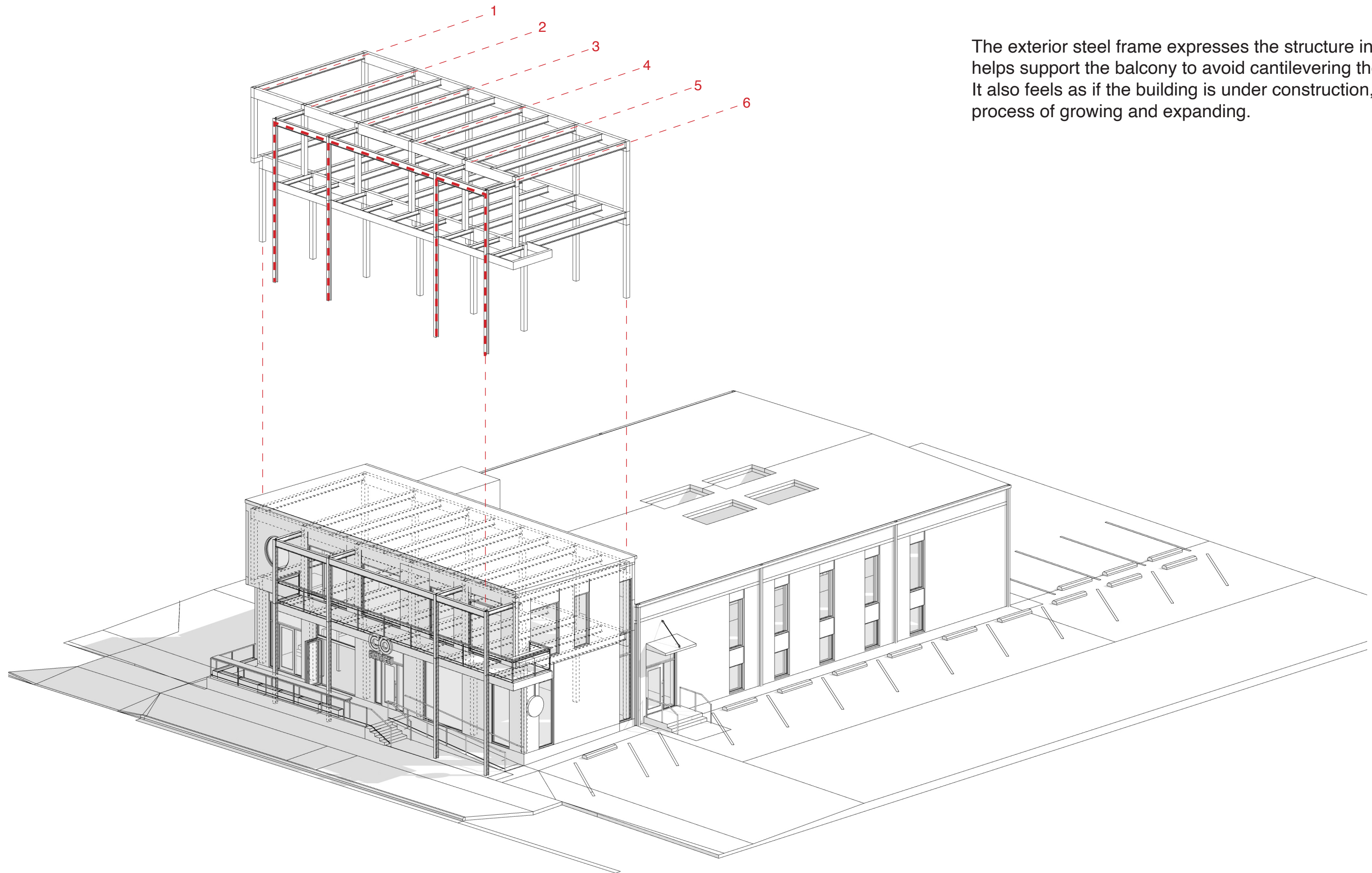




The front of the addition uses the same dimension of the old windows and create a new rhythm by turning the same width into the piers to create sizable storefront windows.



The exterior steel frame expresses the structure inside, and helps support the balcony to avoid cantilevering the structure. It also feels as if the building is under construction, in the process of growing and expanding.





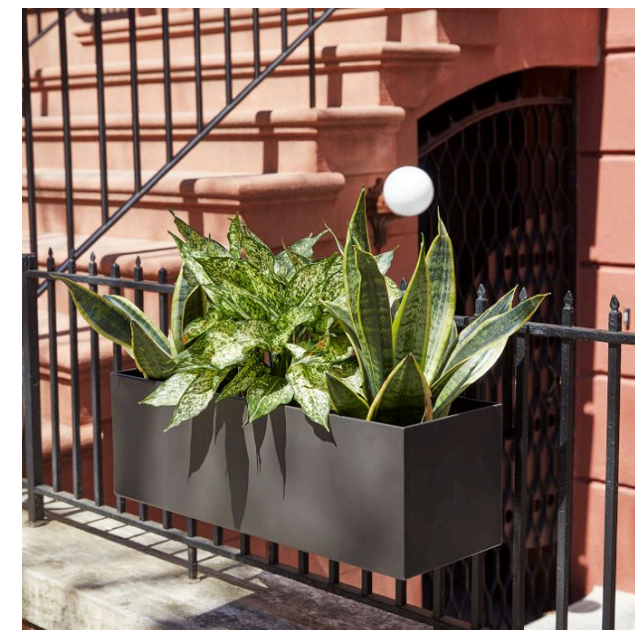
North View



North Detail



WIRE NET & RAILING
CONNECTION EXAMPLE



WEST ELM, STREAMLINE METAL
RAILING PLANTER, ANTIQUE
BRONZE



North-West View



North-West Detail





North-West View



West Details



South-West Detail



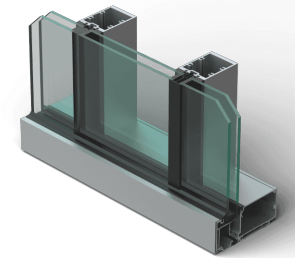
North-East Detail



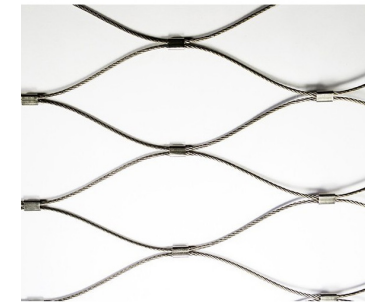
North-East View



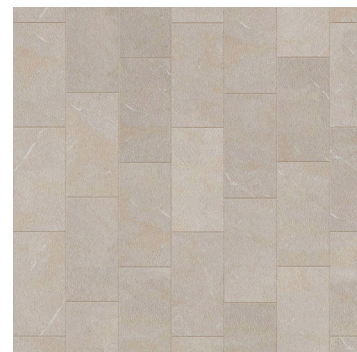
South-West View



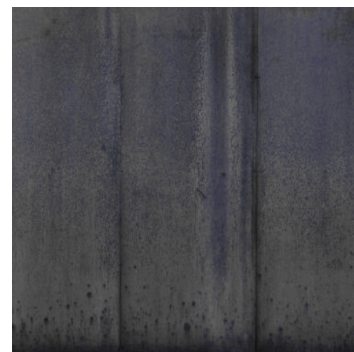
7. KAWNEER TRIFAB VERSAGLAZE FRAMING SYSTEM IN DARK BRONZE



8. LUNAAPRO EXPAND WEB NET STAINLESS STEEL



1. LIMESTONE VENEER



2. STEEL W/ CUSTOM TEXTURE FINISH



3. NEW TECH COMPOSITE DECK



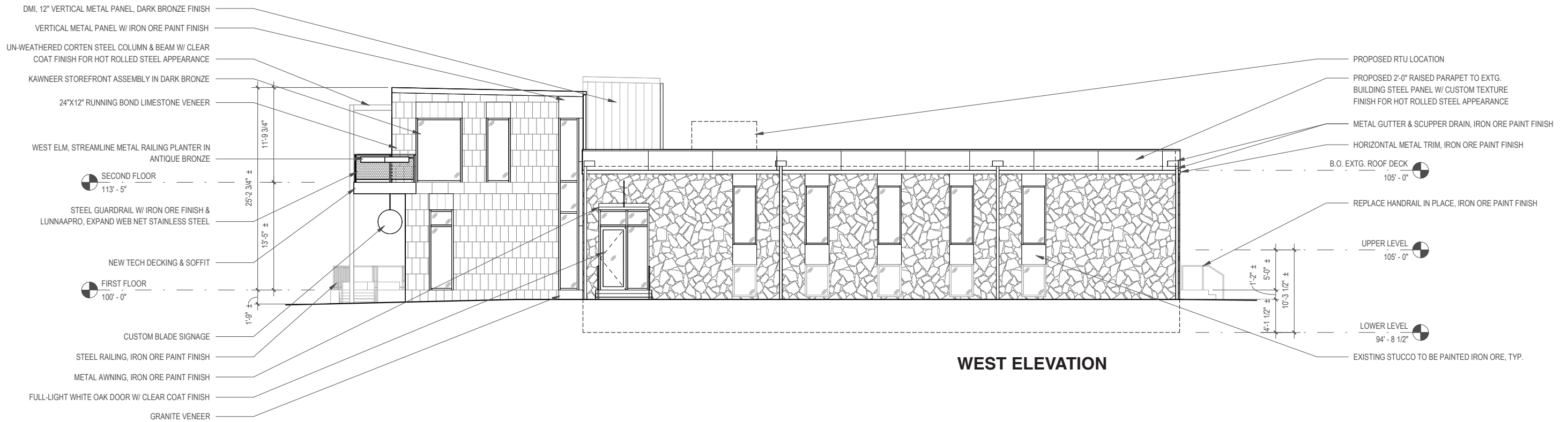
4. METAL PANELS DMI DARK BRONZE



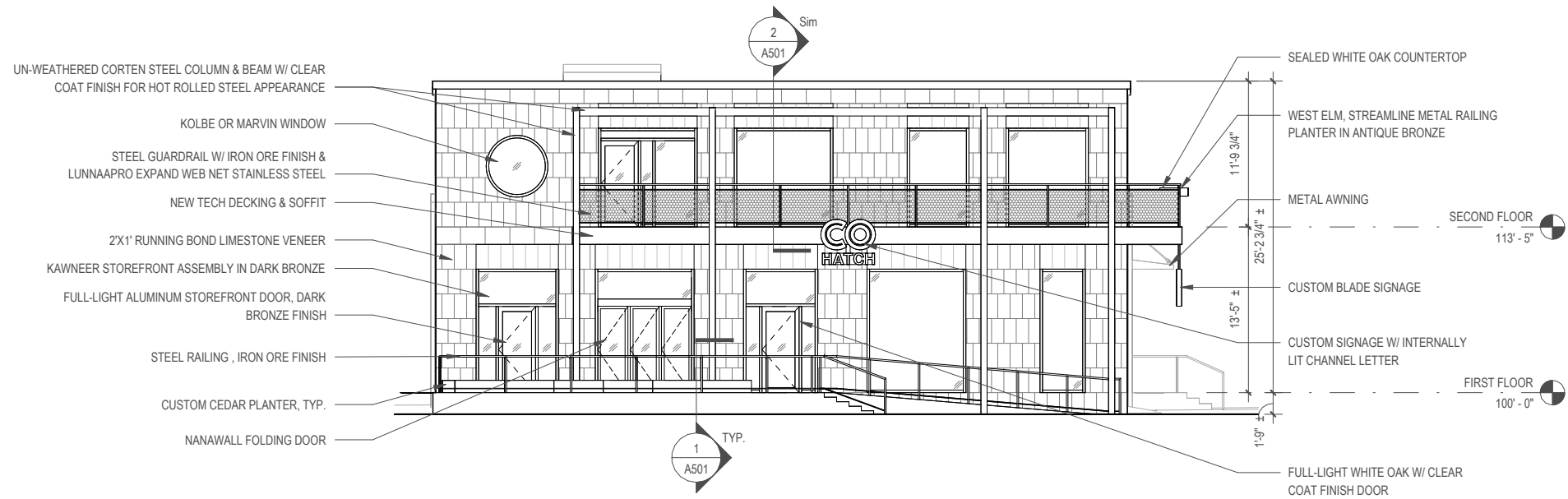
5. WHITE OAK FULL-LITE DOOR WITH CLEAR COAT FINISH



6. PAINTED STUCCO IRON ORE SW 7069

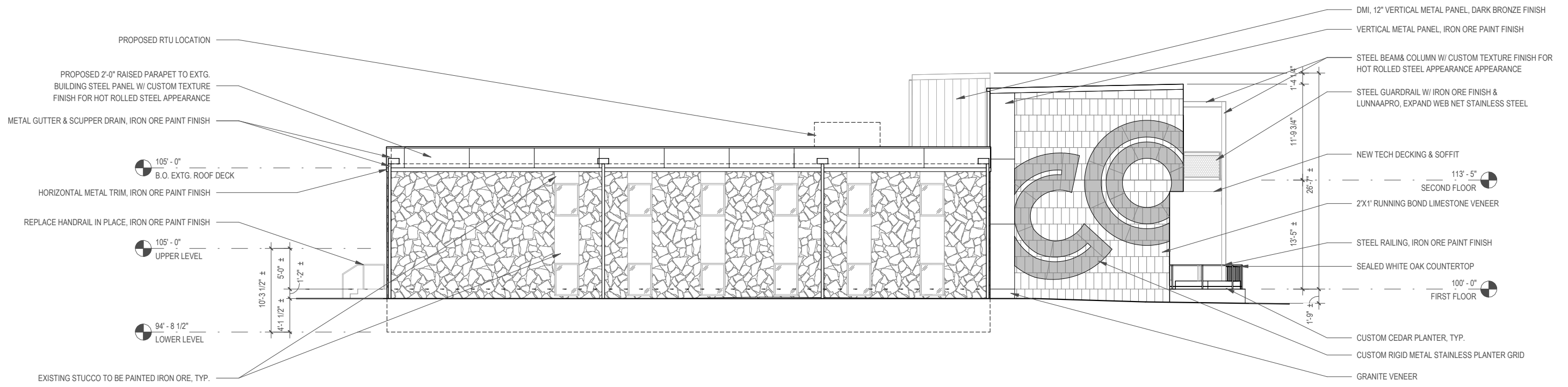


WEST ELEVATION



NORTH ELEVATION

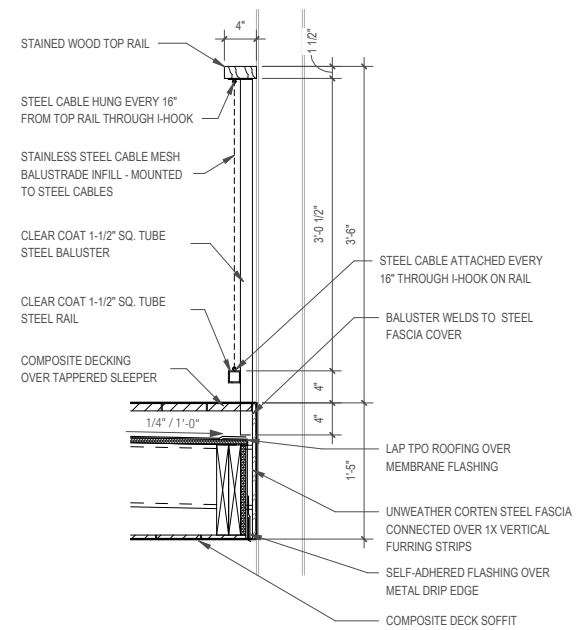




EAST ELEVATION

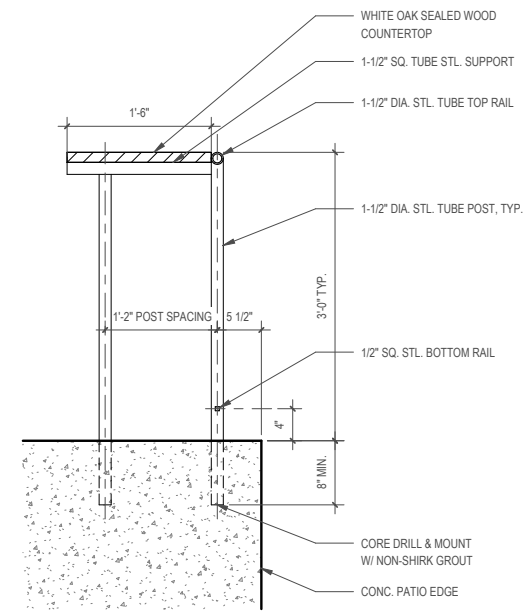


SOUTH ELEVATION



BALCONY RAILING SECTION

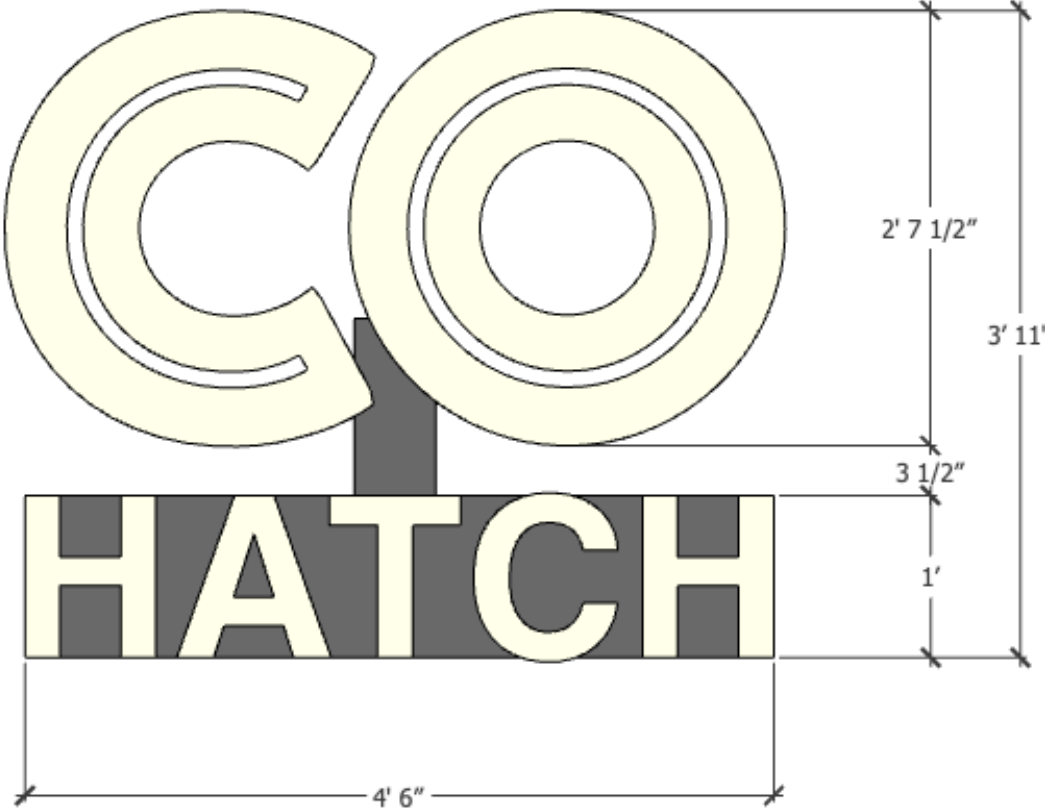
scale : 1" = 1'-0"



PATIO RAILING SECTION

scale : 1" = 1'-0"





Custom Internally Lit Chanel
Letter Signage



Custom Blade Signage